

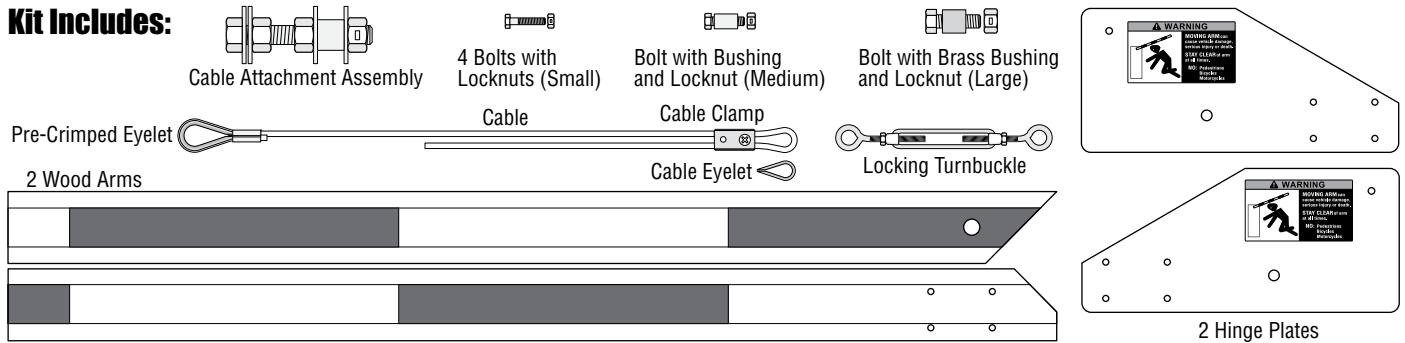
# WOOD FOLDING ARM KIT

DoorKing Part Number

**1601-384**

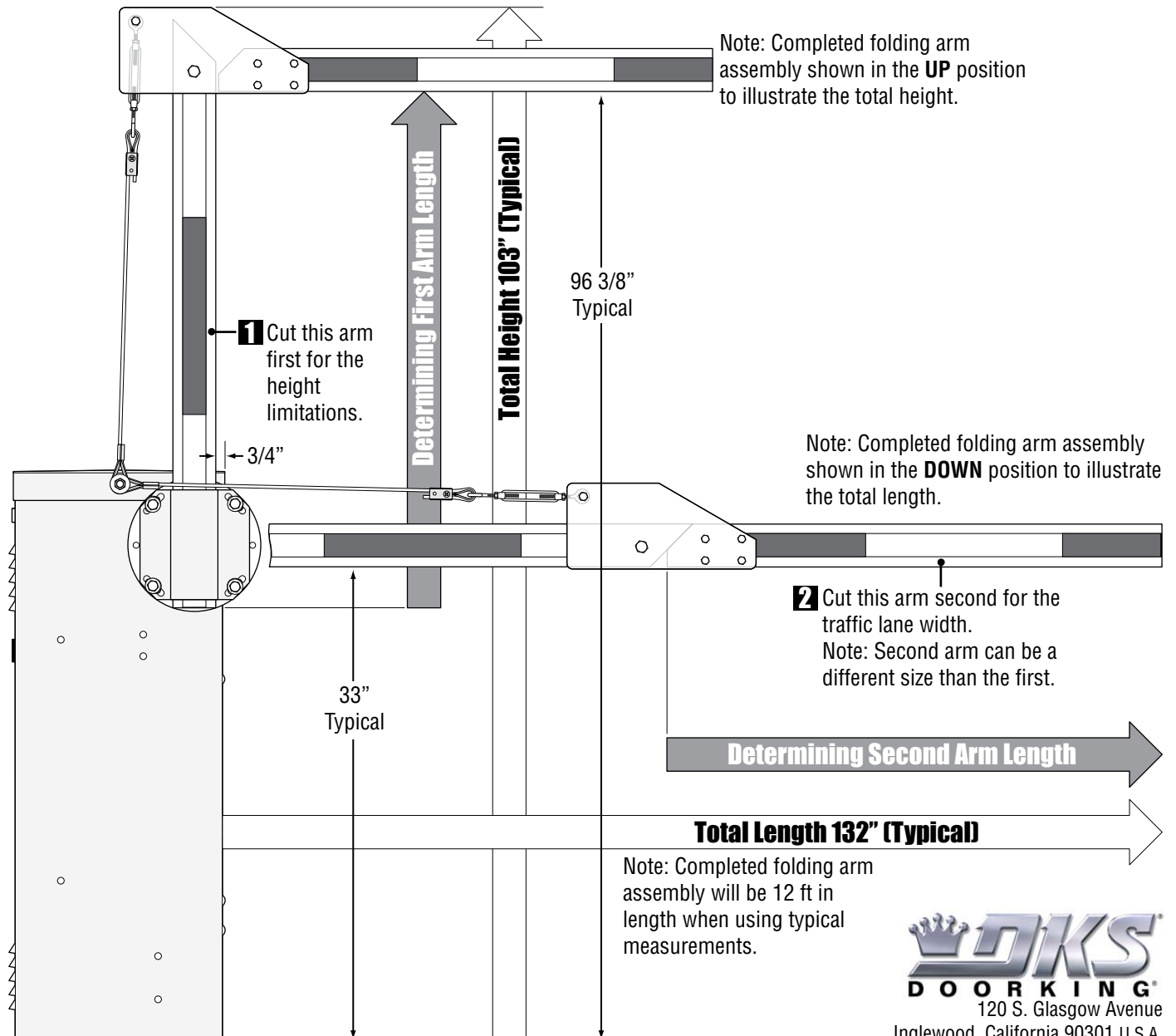
This kit is designed for the 1600 model barrier gate operators only. Recommended for low headroom applications.

## Kit Includes:



## Installation

### Cut Arms to Length

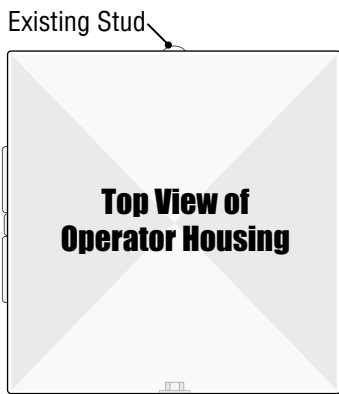
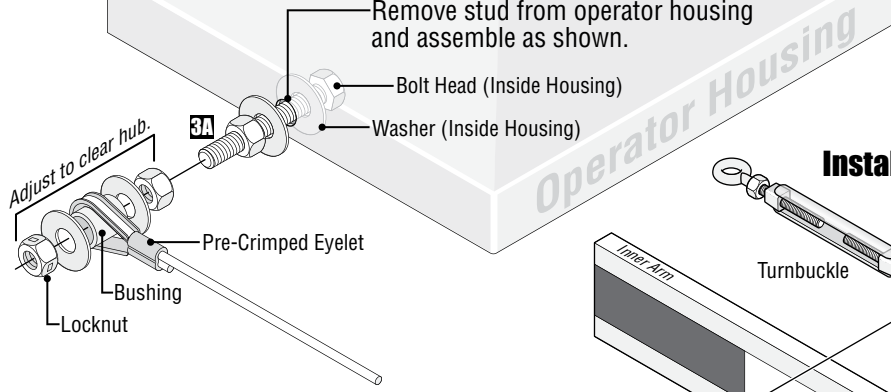


# Installing Arms

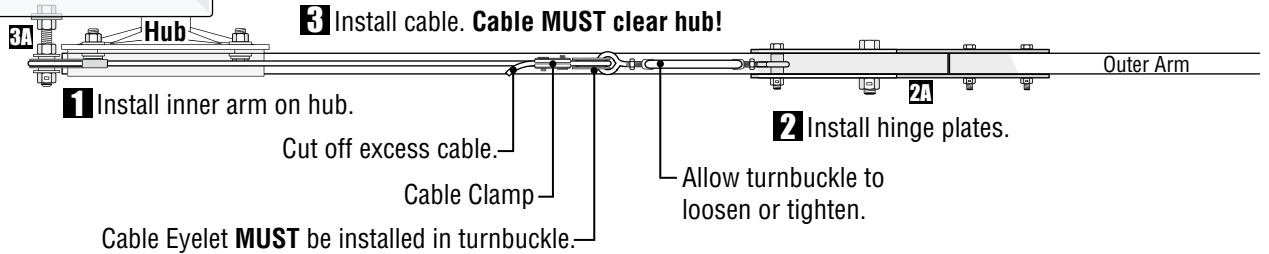
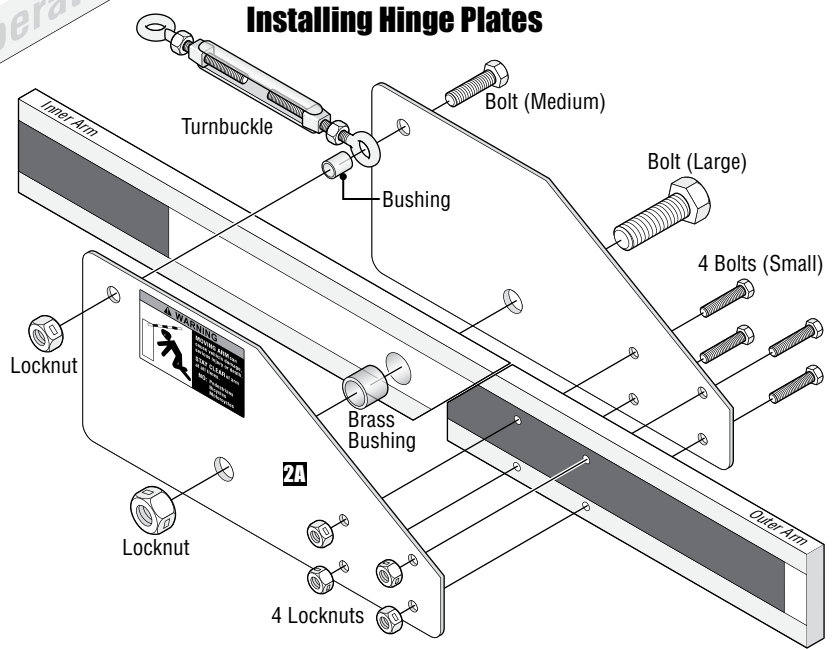
DoorKing Part Number

**1601-384**

## Installing Cable Attachment Assembly

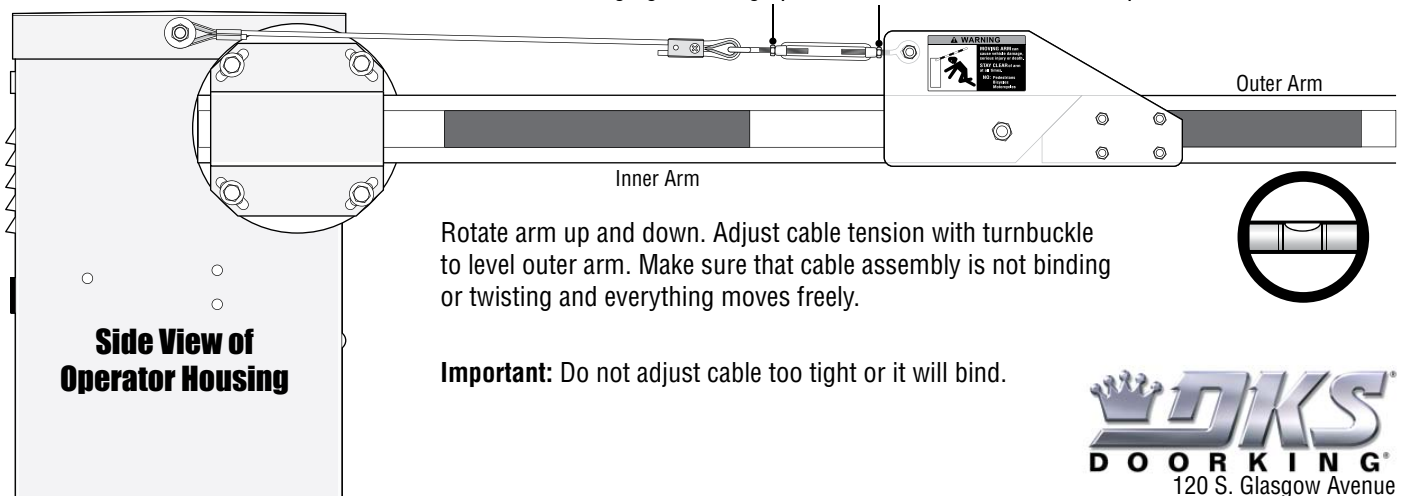


## Installing Hinge Plates



## Adjusting and Locking Cable Assembly

After adjusting cable tension, lock turnbuckle with nuts in position shown to prevent turnbuckle from rubbing against hinge plates when the arm is in the UP position.



Rotate arm up and down. Adjust cable tension with turnbuckle to level outer arm. Make sure that cable assembly is not binding or twisting and everything moves freely.

**Important:** Do not adjust cable too tight or it will bind.