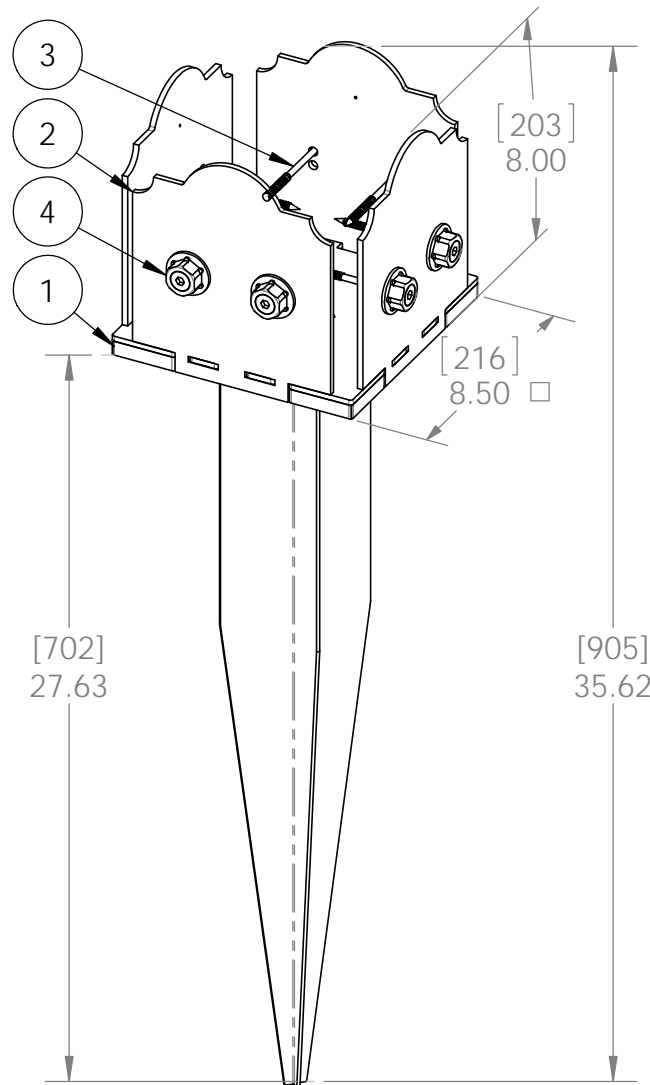
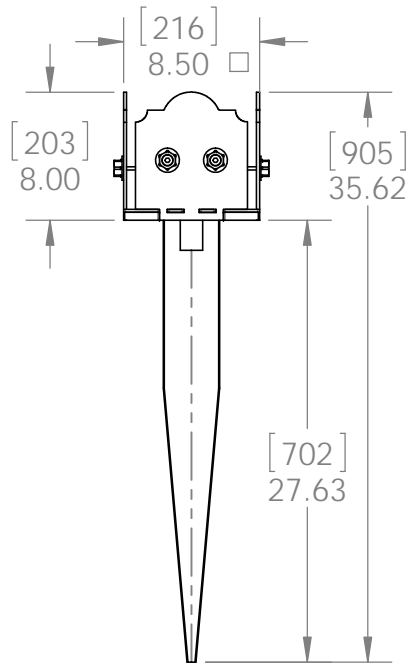


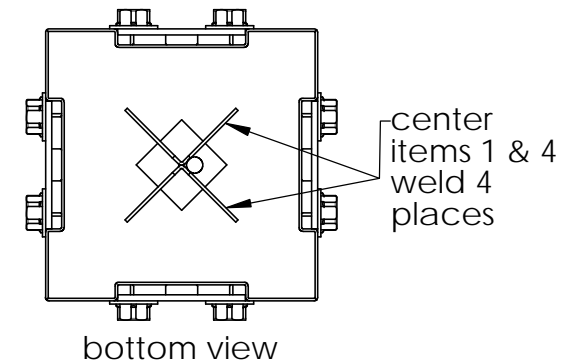
Product & Packaging Specs

8x8 Post Base

Item #: 56634



ITEM NO.	QTY.	PART NUMBER	DESCRIPTION
1	1	56634-11	Assy, 8x8 Post Anchor Base
2	4	56609-15	Plate, 8x8 Side Compression
3	8	56627	OWT Timber Screw 3-3/4"
4	8	56621	1 1/2" Hex Cap Nut



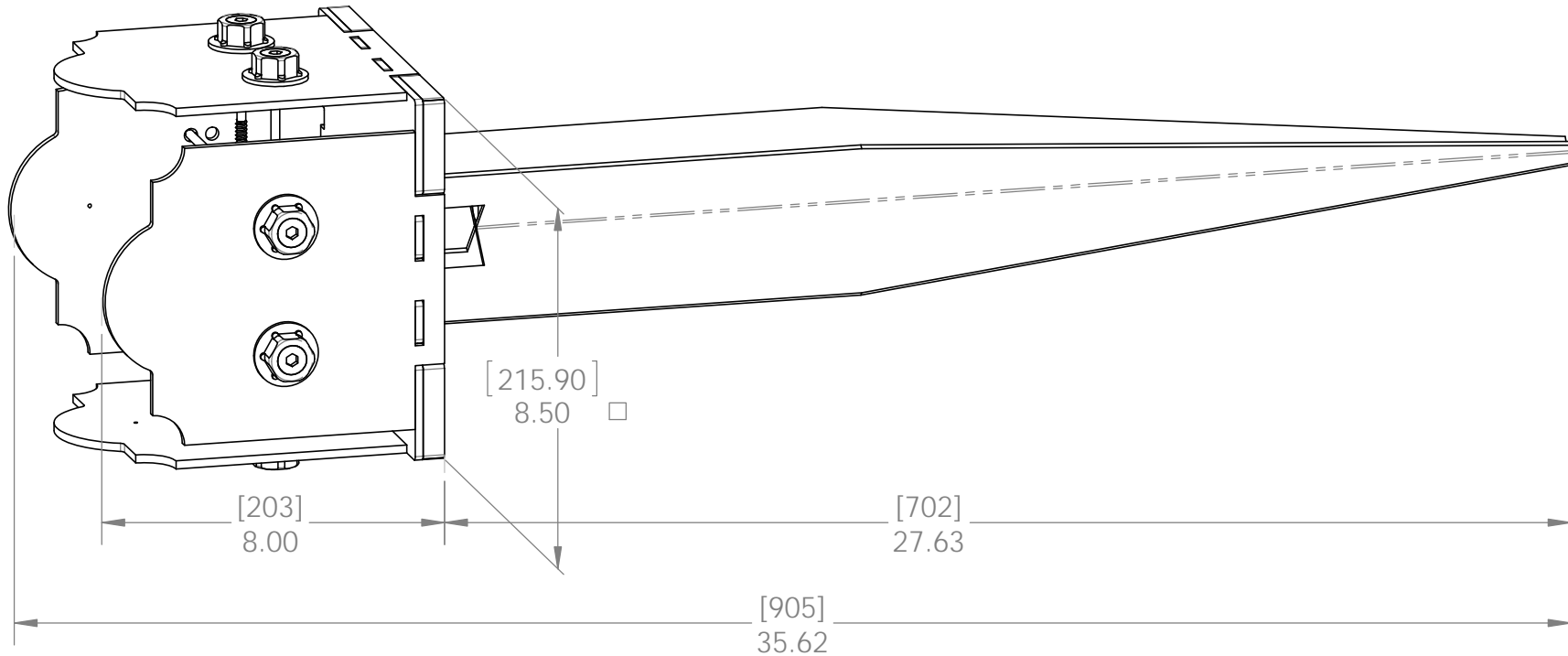
Weight: 20.03 LBS
Scale: 1:6
Last updated: 7/13/2015

56634-10

Product & Packaging Specs

8x8 Post Base

Item #: 56634



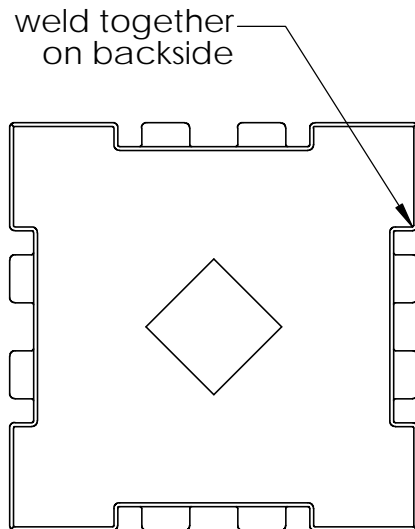
Weight: 20.03 LBS
Scale: 1:4
Last updated: 7/13/2015

56634-10

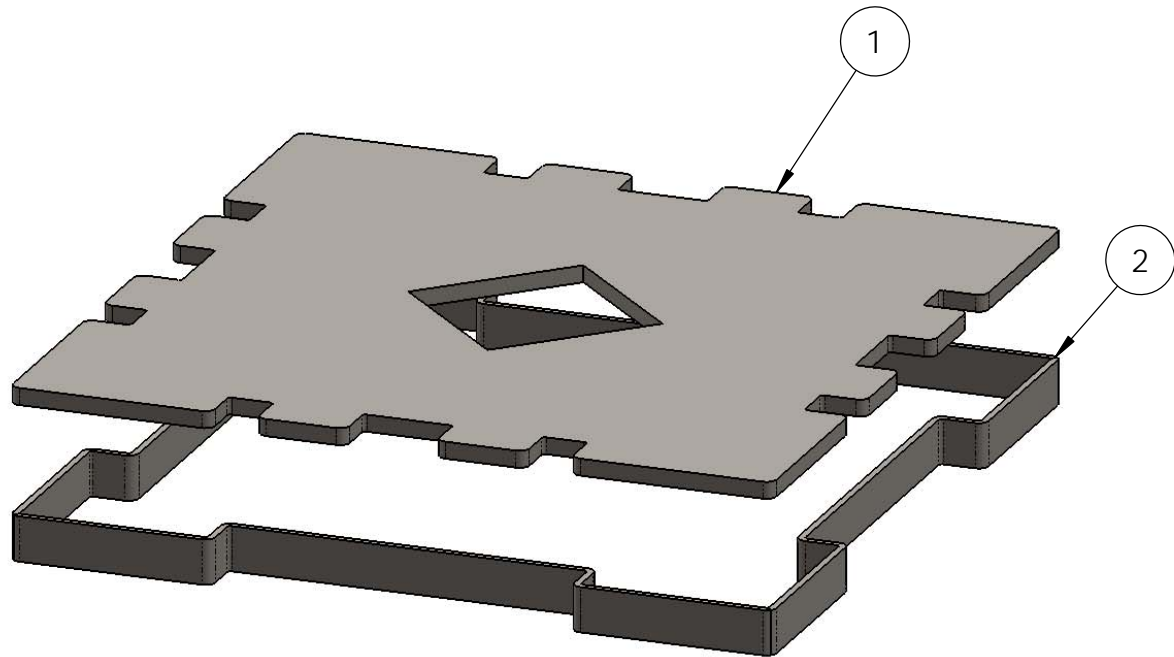
Product & Packaging Specs

Assy, 8x8 Post Anchor Base

Item #: 56634-11



ITEM NO.	QTY.	PART NUMBER	DESCRIPTION
1	1	56634-12	Adj Post Base Plate Sidewall
2	1	56609-13	Adj Base Side Stamping Assy



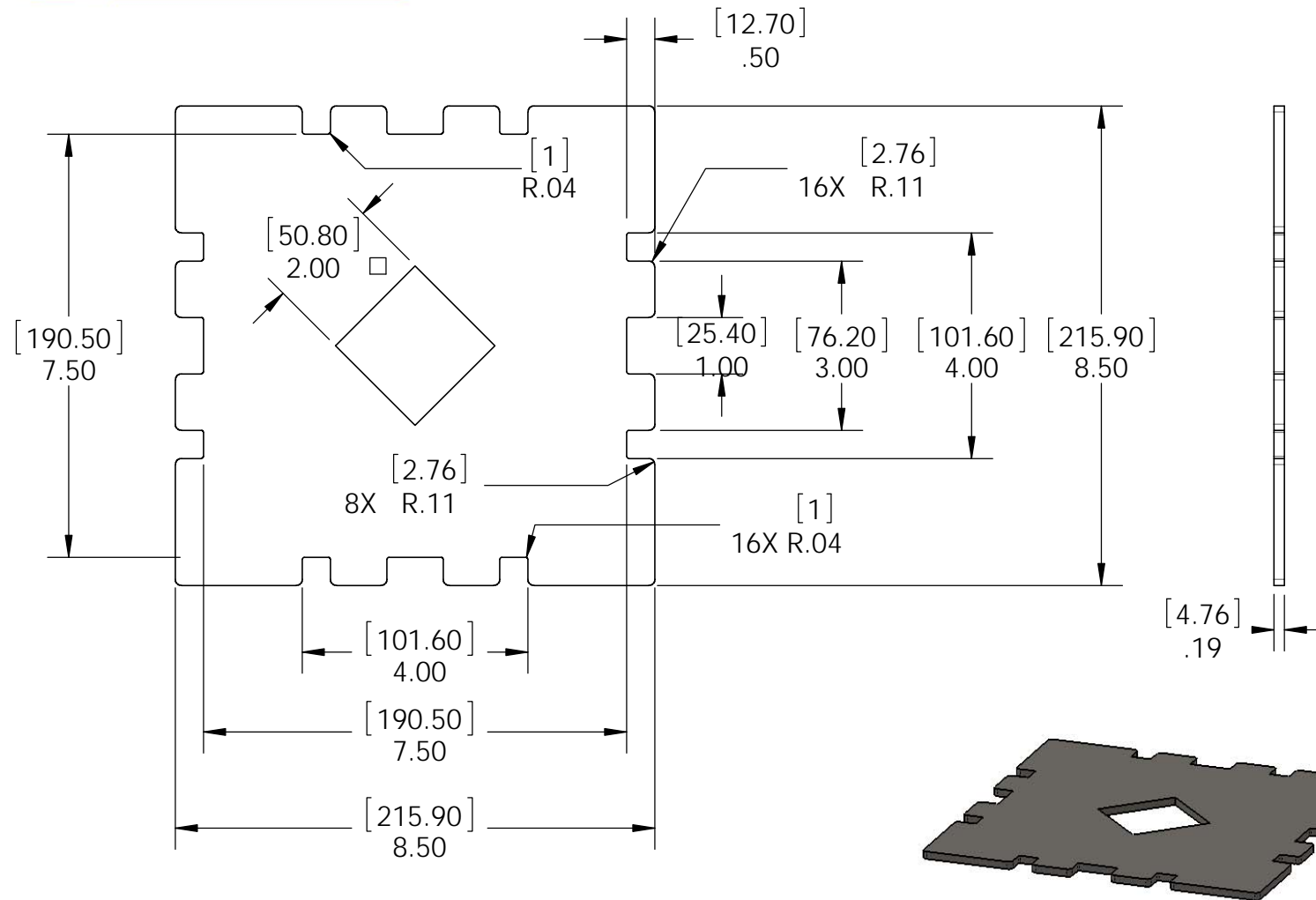
Weight: 3.83 LBS
Scale: 1:2
Last updated: 7/13/2015

56634-10

Product & Packaging Specs

Adj Post Base Plate Sidewall

Item #: 56634-12



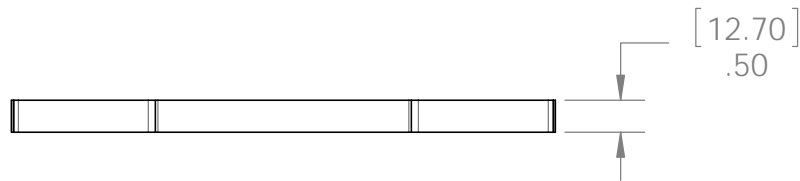
Material: ASTM A36 Steel
Finish: -
Weight: 3.41 LBS
Scale: 1:3
Last updated: 7/13/2015

56634-10

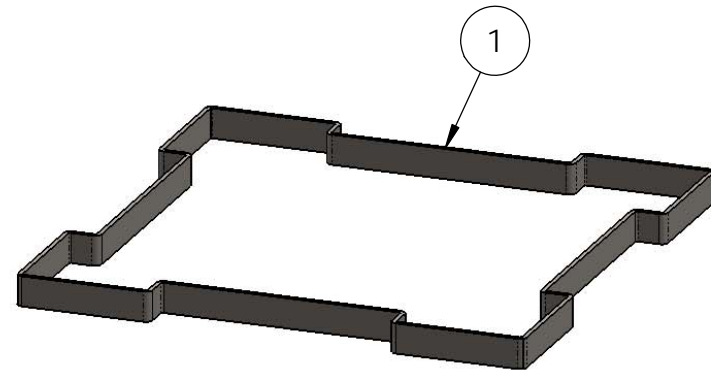
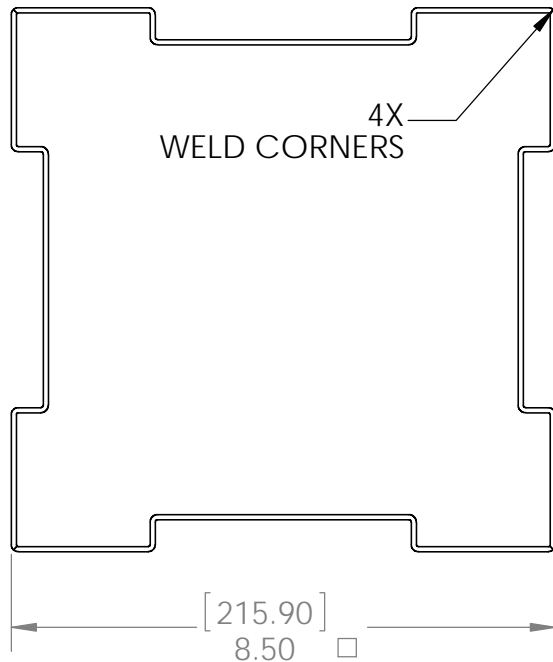
Product & Packaging Specs

Adj Base Side Stamping Assy

Item #: 56609-13



ITEM NO.	QTY.	PART NUMBER	DESCRIPTION
1	4	56609-14	Adj Base Plate Stamping



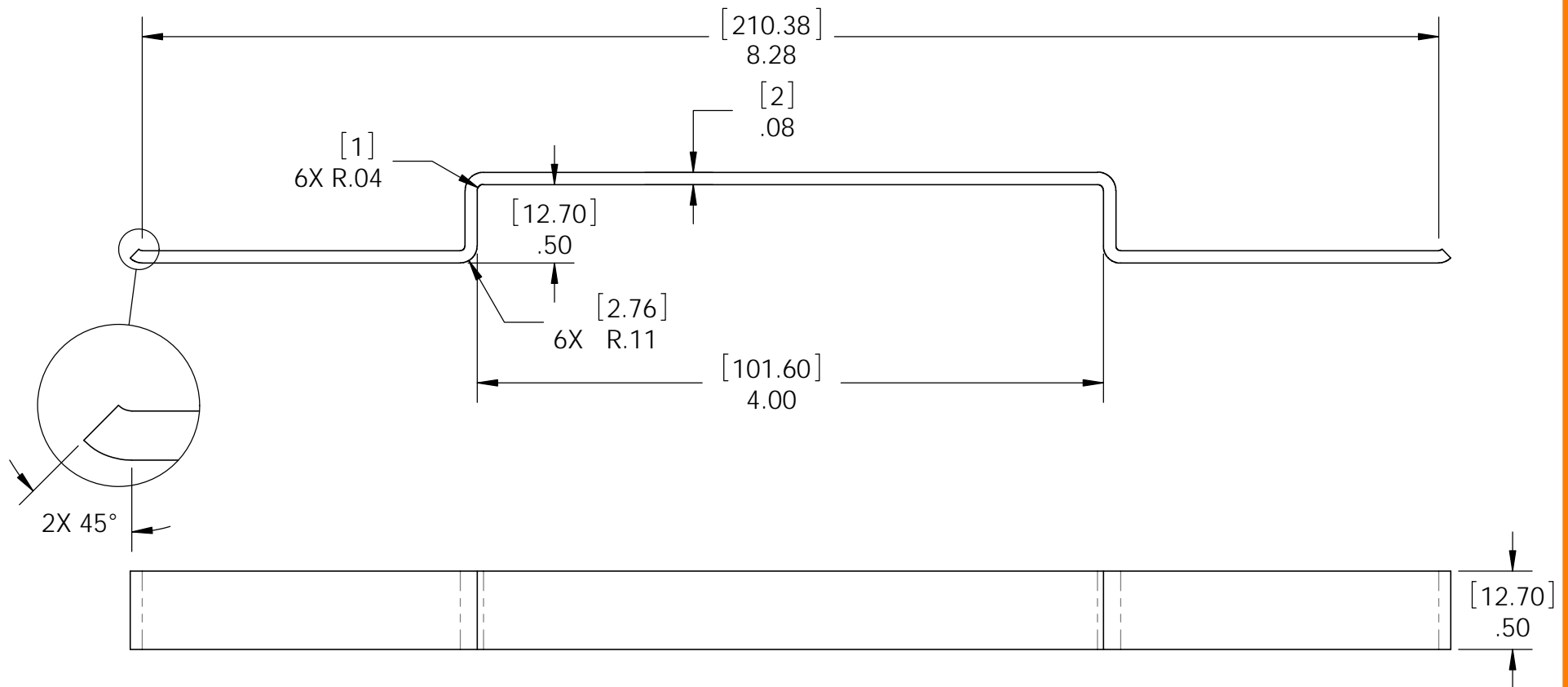
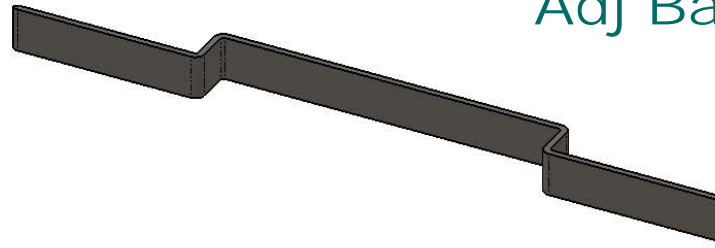
Weight: 0.41 LBS
Scale: 1:3
Last updated: 7/13/2015

56634-10

Product & Packaging Specs

Adj Base Plate Stamping

Item #: 56609-14



Material: ASTM A36 Steel

Finish: -

Weight: 0.10 LBS

Scale: 1:1

Last updated: 7/13/2015

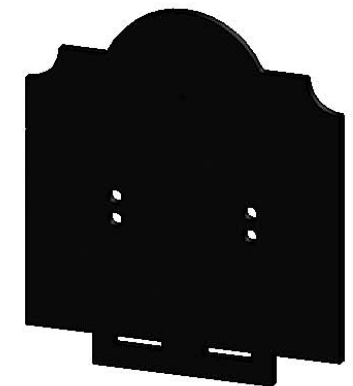
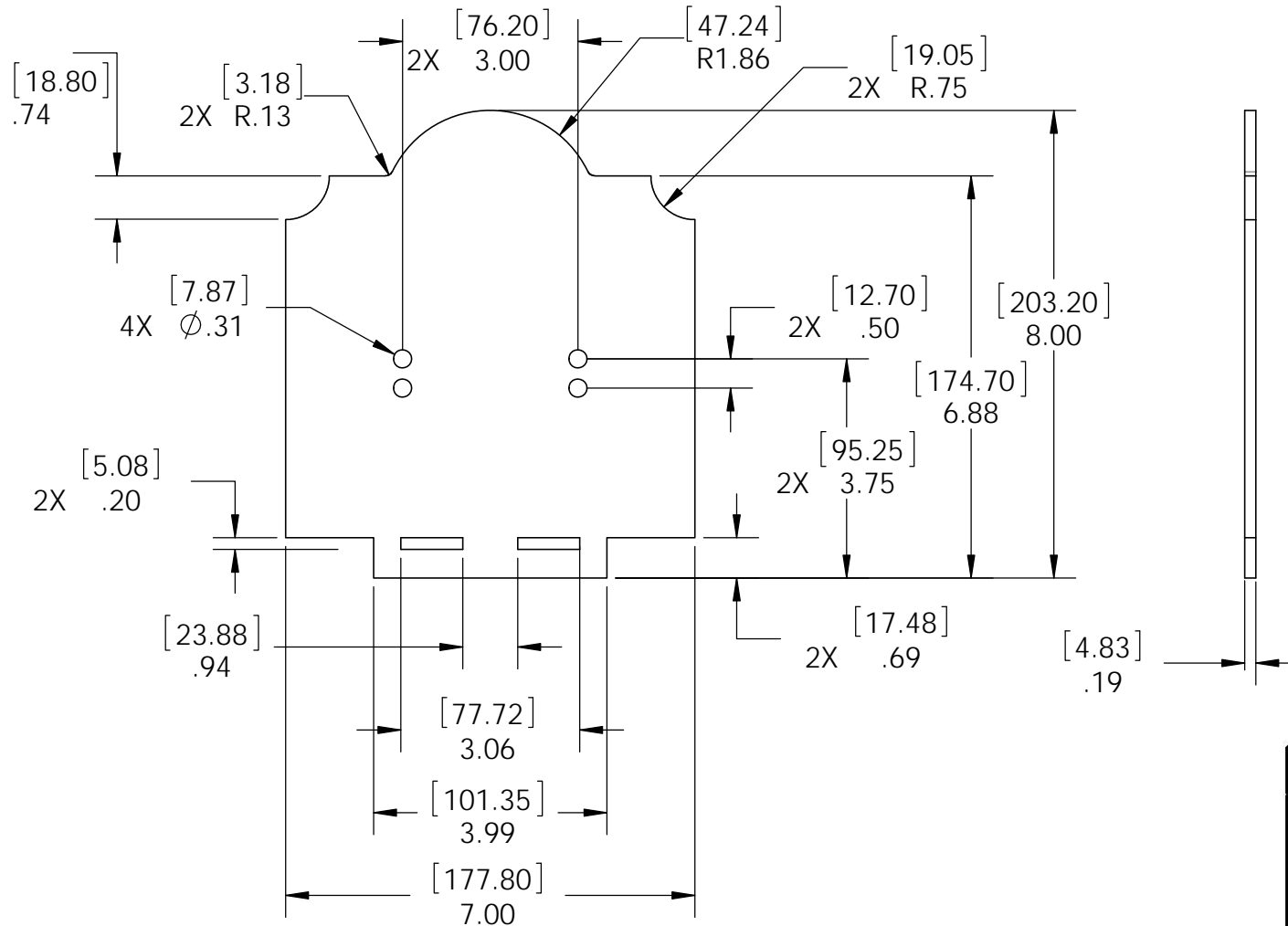
56634-10

V1.00 - Installation Instructions effective May 1, 2015 and reflects information that available as of April 10, 2014. This information is updated periodically and should not be relied upon after May 1, 2015. Please visit www.OZCOBP.com to get current information

Product & Packaging Specs

Plate, 8x8 Side Compression

Item #: 56609-15



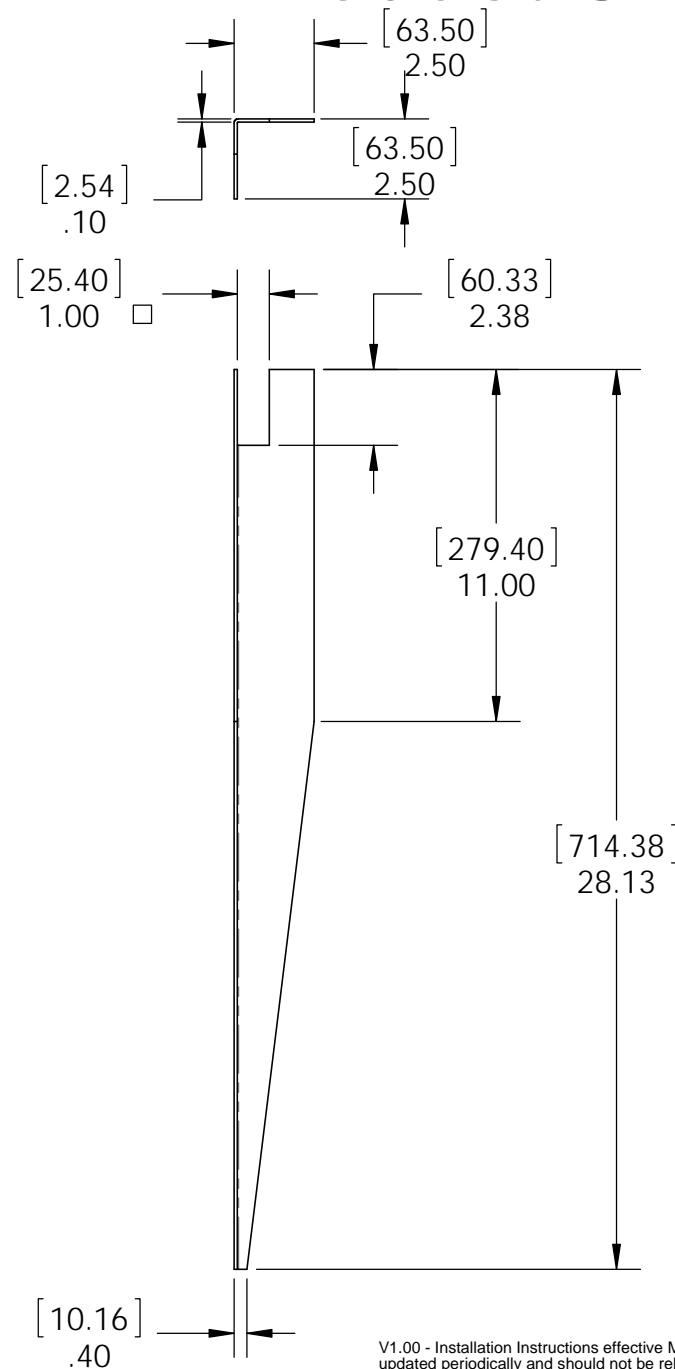
Material: ASTM A36 Steel
Finish: Black Powder Coat
Weight: 2.54 LBS
Scale: 1:3
Last updated: 7/13/2015

56634-10

Product & Packaging Specs

Plate, Base Anchor

Item #: 56632-13



Material: Galvanized Steel
Finish: -
Weight: 2.73 LBS
Scale: 1:6
Last updated: 7/13/2015

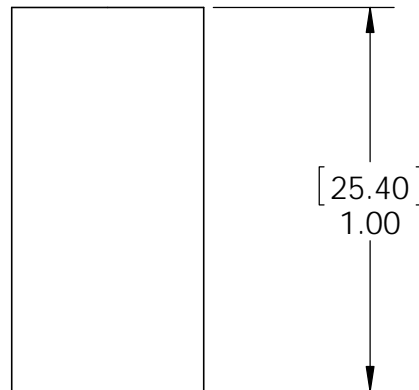
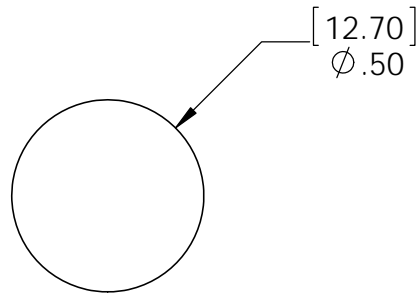
56634-10

V1.00 - Installation Instructions effective May 1, 2015 and reflects information that available as of April 10, 2014. This information is updated periodically and should not be relied upon after May 1, 2015. Please visit www.OZCOBP.com to get current information

Product & Packaging Specs

Cylinder, Base Anchor

Item #: 56632-14



Material: Galvanized Steel
Finish: -
Weight: 0.06 LBS
Scale: 2:1
Last updated: 7/13/2015

56634-10

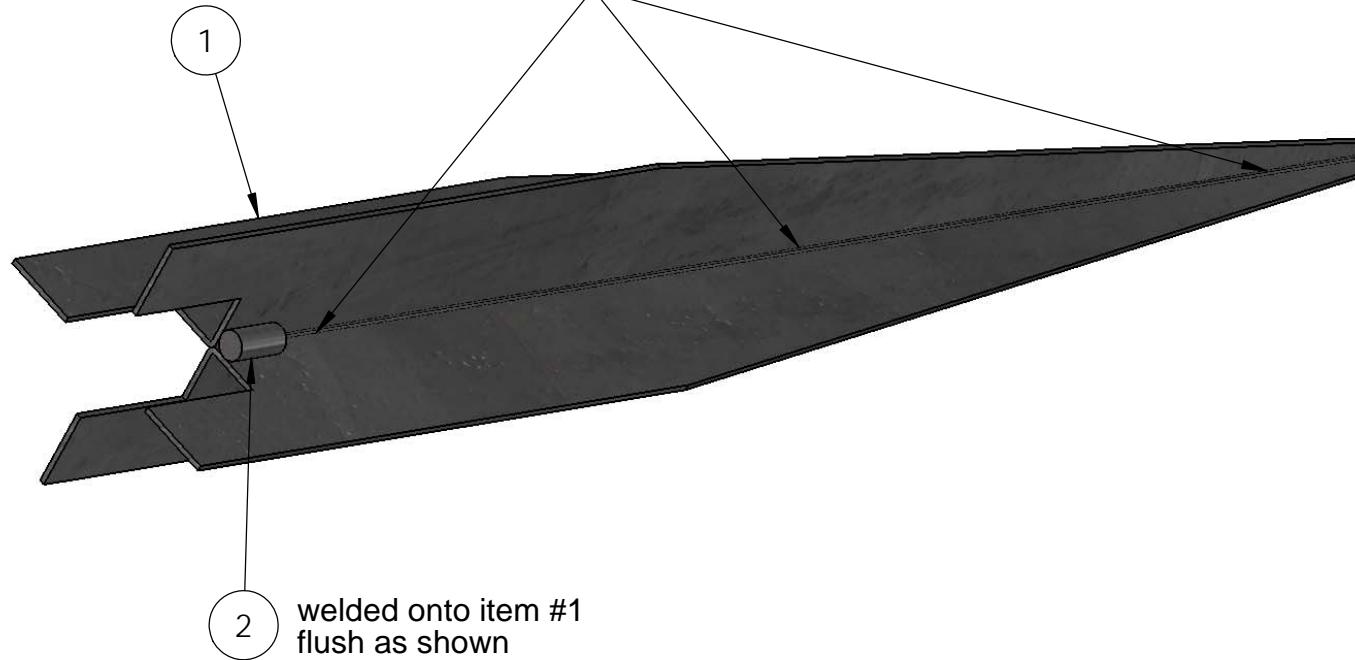
Product & Packaging Specs

Assembly, Base Anchor

Item #: 56632-15

ITEM NO.	QTY.	PART NUMBER	DESCRIPTION
1	2	56632-13	Plate, Base Anchor
2	1	56632-14	Cylinder, Base Anchor

Two pieces welded together at three points along length of anchor



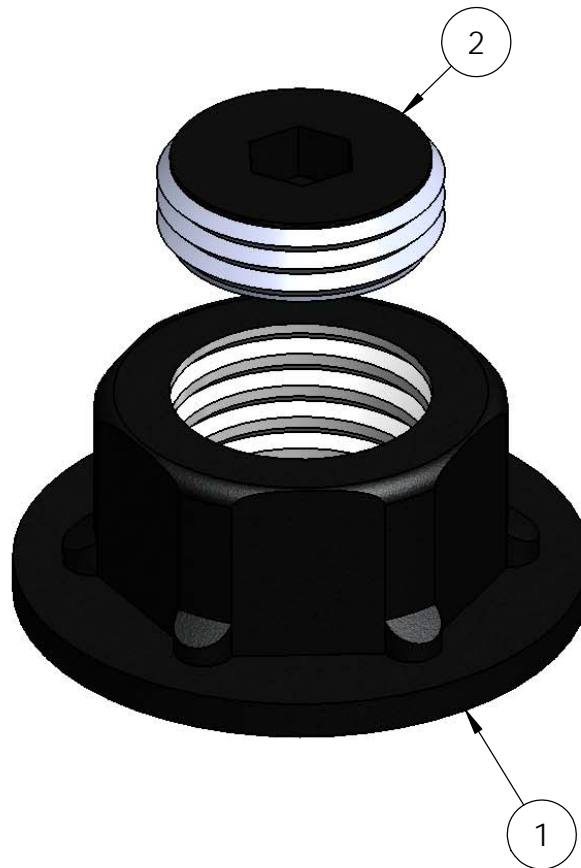
Weight: 5.51 LBS
Scale: 1:3
Last updated: 7/13/2015

56634-10

Product & Packaging Specs

1 1/2" Hex Cap Nut
Item #: 56621

ITEM NO.	QTY.	PART NUMBER	DESCRIPTION
1	1	56621-11	1 1/2" Hex Cap Nut
2	1	56621-12	1 1/2" Hex Cap Nut Plug



Weight: 0.04 LBS
Scale: 1:1
Last updated: 7/13/2015

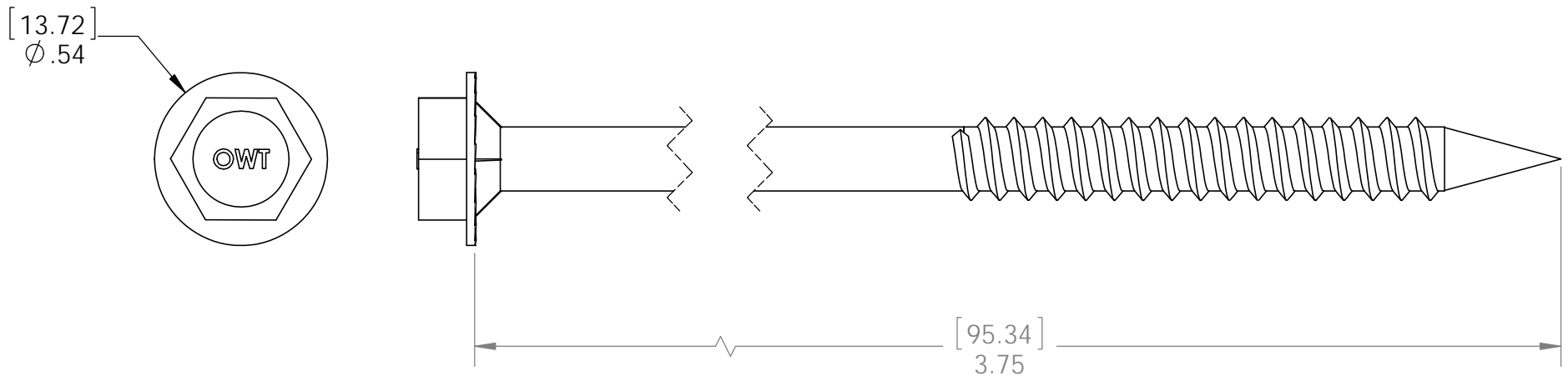
for additional details, see drawing 56621



Product & Packaging Specs

Screw, OWT 3-3/4" (95mm) Timber

Item #: 56627



Weight: 0.02 LBS
Scale: 2:1
Last updated: 7/13/2015

56634-10

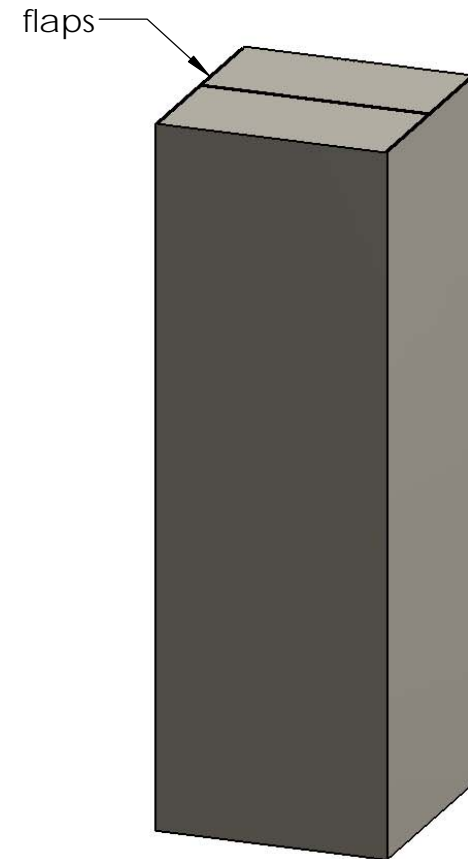
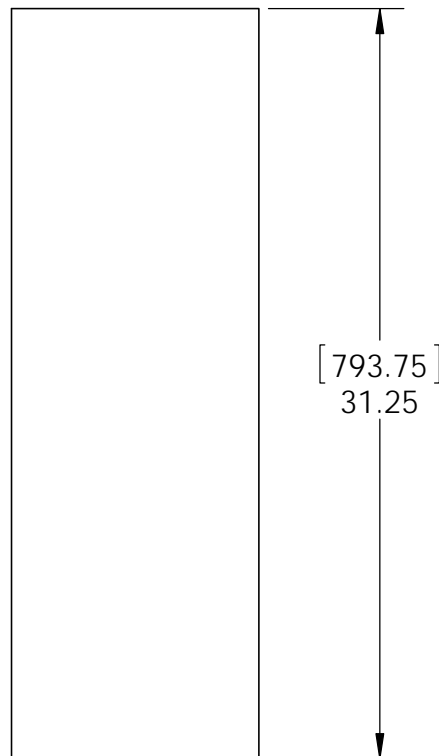
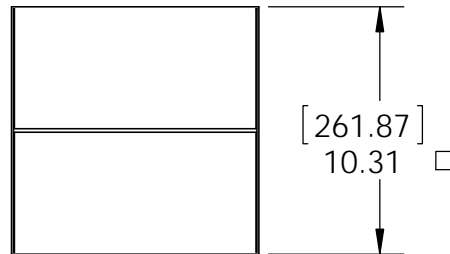
for additional details, see drawing OWT Timber Screw

V1.00 - Installation Instructions effective May 1, 2015 and reflects information that available as of April 10, 2014. This information is updated periodically and should not be relied upon after May 1, 2015. Please visit www.OZCOBP.com to get current information

Product & Packaging Specs

Box, 56634 packing

Item #: Box



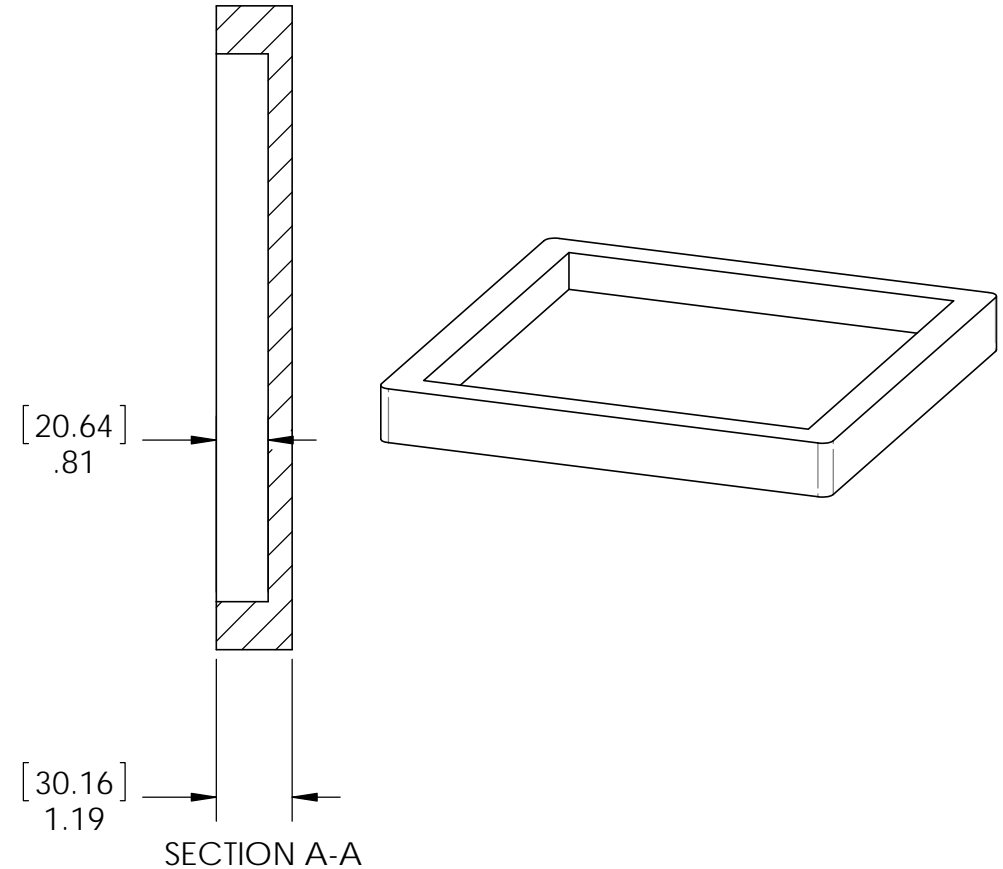
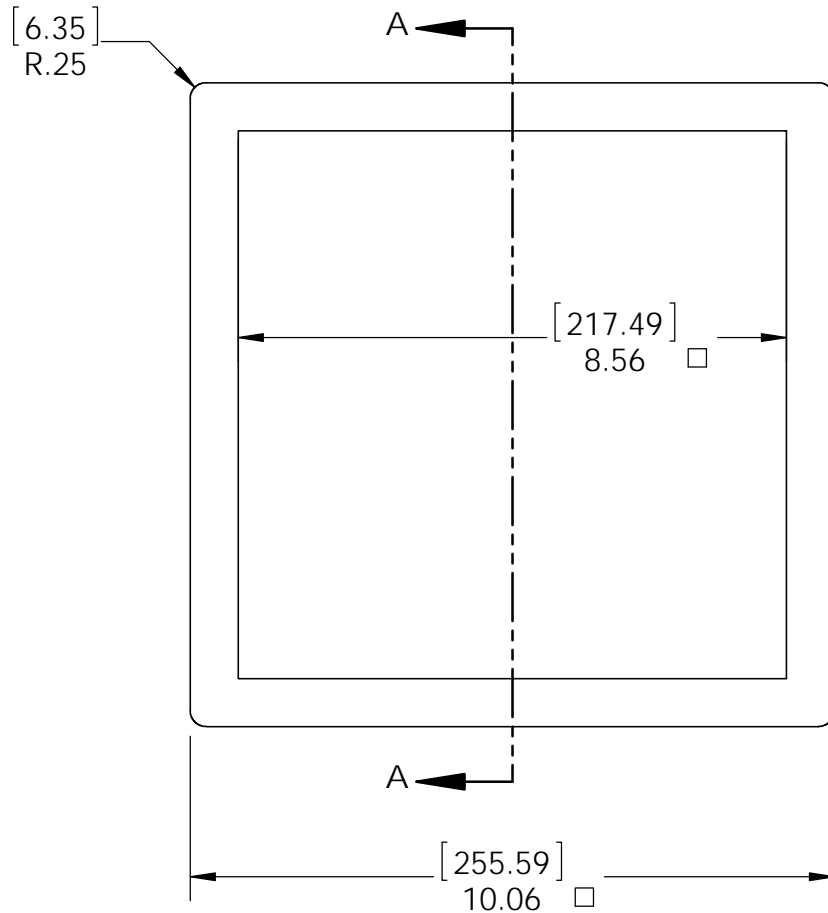
Material: Corrugated Paper
Finish: See Artwork
Weight: 0.67 LBS
Scale: 1:8
Last updated: 7/13/2015

56634-10

Product & Packaging Specs

8x8 Base Packing Insert

Item #: Base insert



Material: Polyurethane Foam Rigid
Finish: Natural
Weight: 0.35 LBS
Scale: 1:2
Last updated: 7/13/2015

56634-10

this packing is shared with 56609

V1.00 - Installation Instructions effective May 1, 2015 and reflects information that available as of April 10, 2014. This information is updated periodically and should not be relied upon after May 1, 2015. Please visit www.OZCOBP.com to get current information

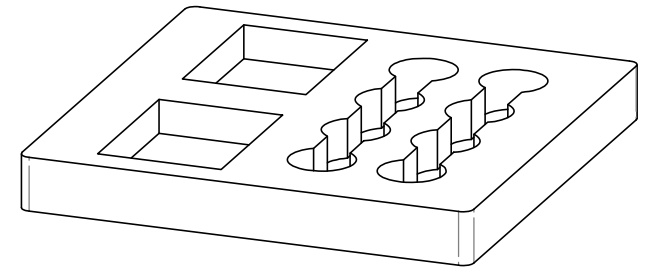
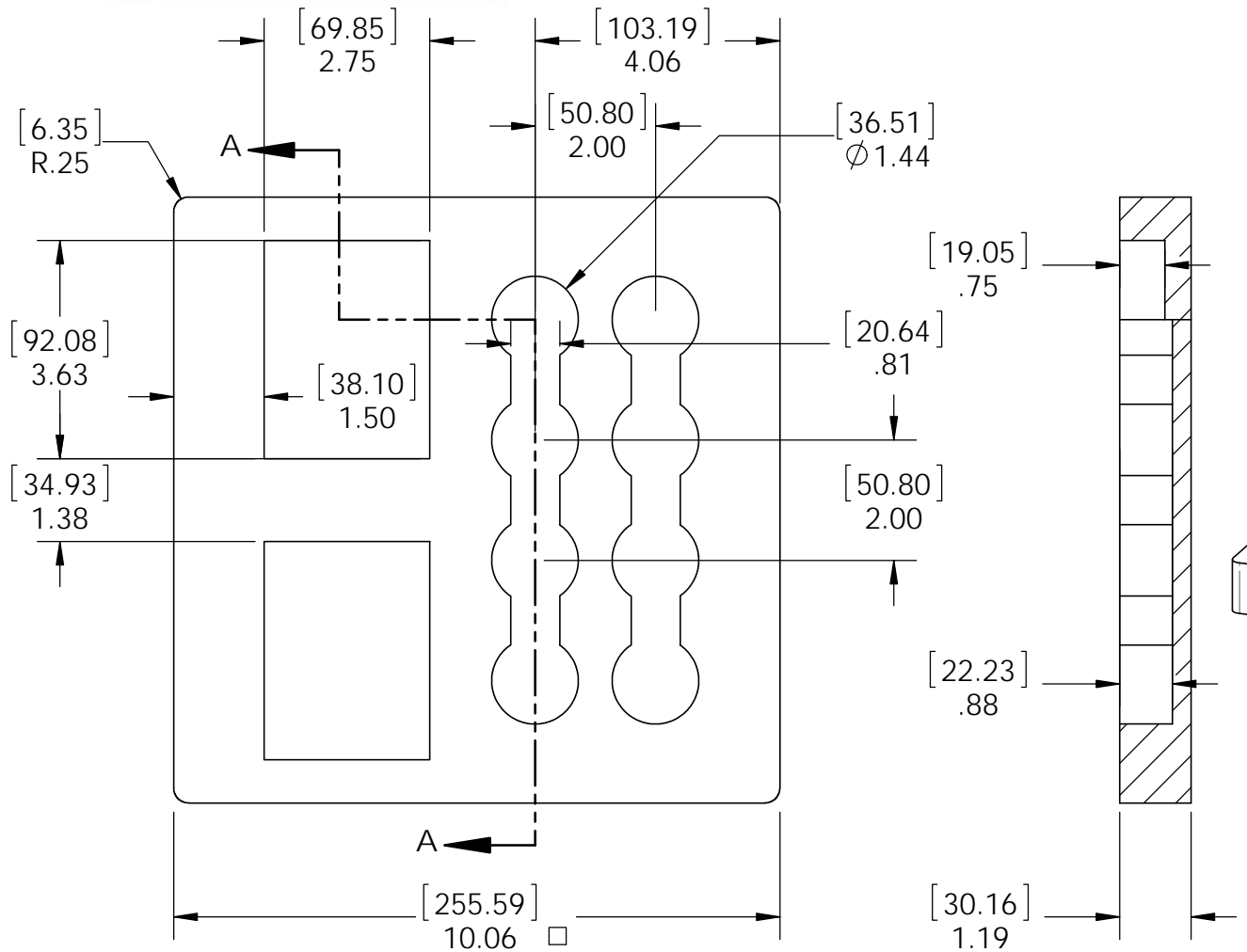


OZCO BUILDING PRODUCTS

Product & Packaging Specs

8x8 Fastener Packing Insert

Item #: Fastener Insert



Material: Polyurethane Foam Rigid
Finish: Natural
Weight: 0.53 LBS
Scale: 1:4
Last updated: 7/13/2015

56634-10

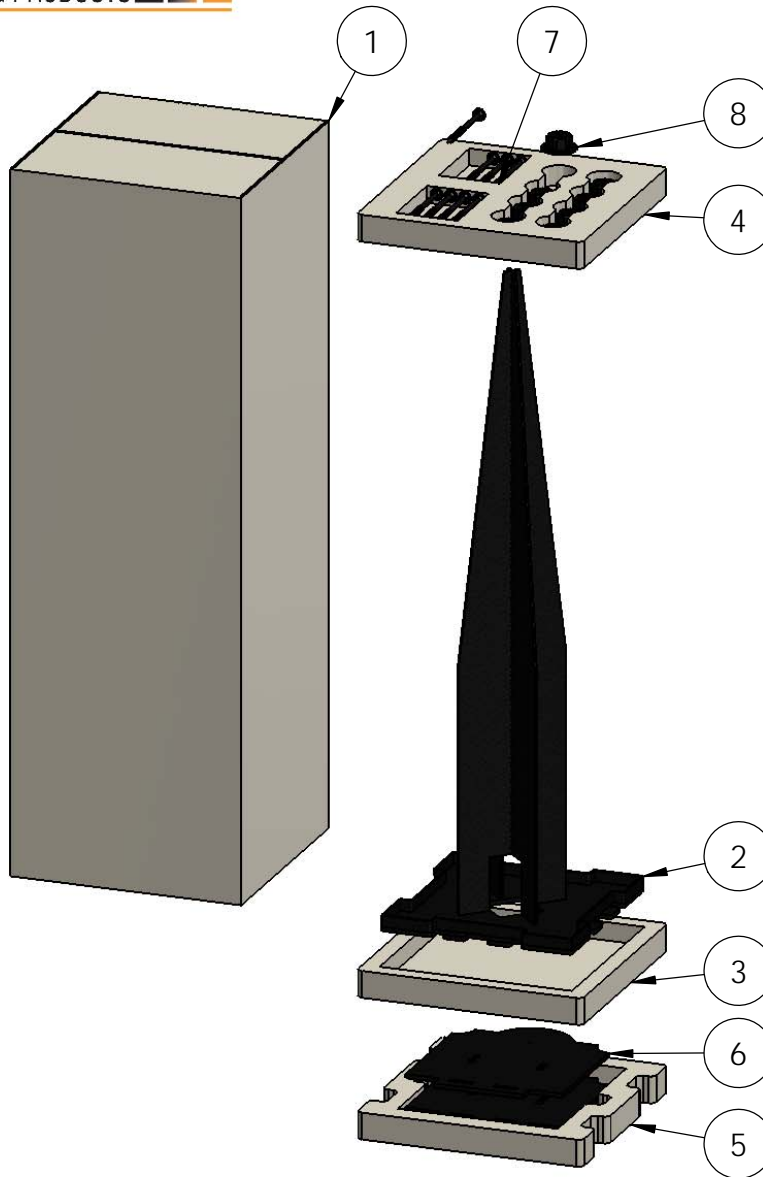
this packing is shared with 56609

V1.00 - Installation Instructions effective May 1, 2015 and reflects information that available as of April 10, 2014. This information is updated periodically and should not be relied upon after May 1, 2015. Please visit www.OZCOBP.com to get current information

Product & Packaging Specs

56634 Packing

Item #: Box packing



ITEM NO.	QTY.	PART NUMBER	DESCRIPTION
1	1	Box, 56634 packing	Box, 56634 packing
2	1	56634-10	8x8 Post Base
3	1	8x8 post base box insert packing	8x8 Base Packing Insert
4	1	8x8 post base box insert packing	8x8 Fastener Packing Insert
5	1	8x8 post base box insert packing	8x8 Plate Packing Insert
6	4	56609-15	Plate, 8x8 Side Compression
7	8	56627	OWT Timber Screw 3-3/4"
8	8	56621	1 1/2" Hex Cap Nut

items not shown:

- installation instructions
- plates wrapped in packing foam sheet

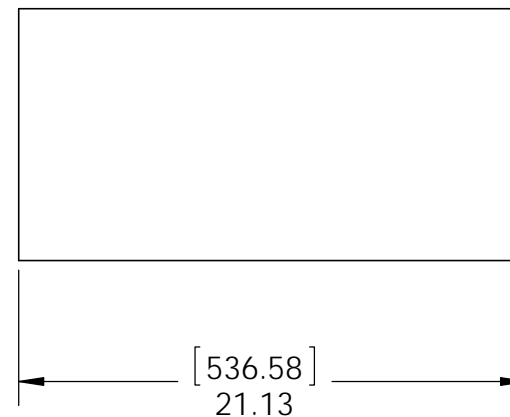
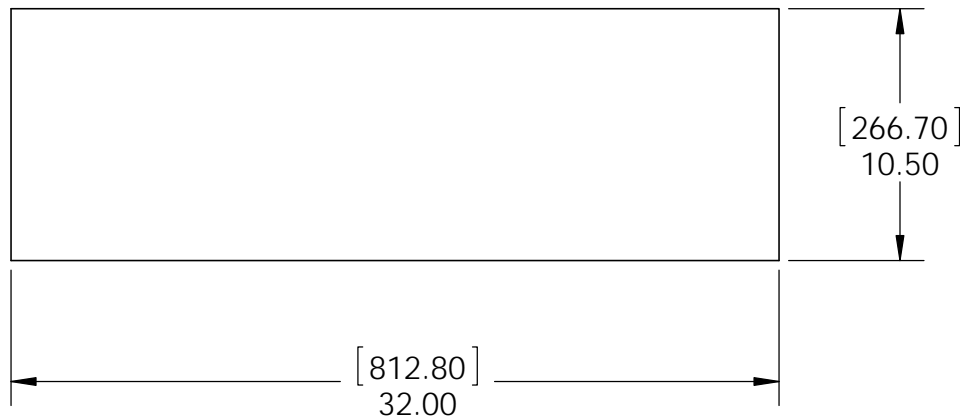
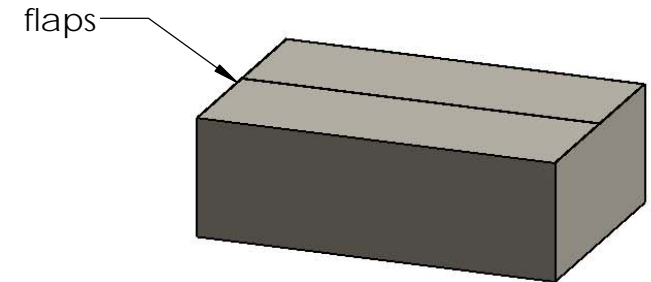
Weight: 21.97 LBS
Scale: 1:8
Last updated: 7/13/2015

56634-10

Product & Packaging Specs

Case, 56634

Item #: Case

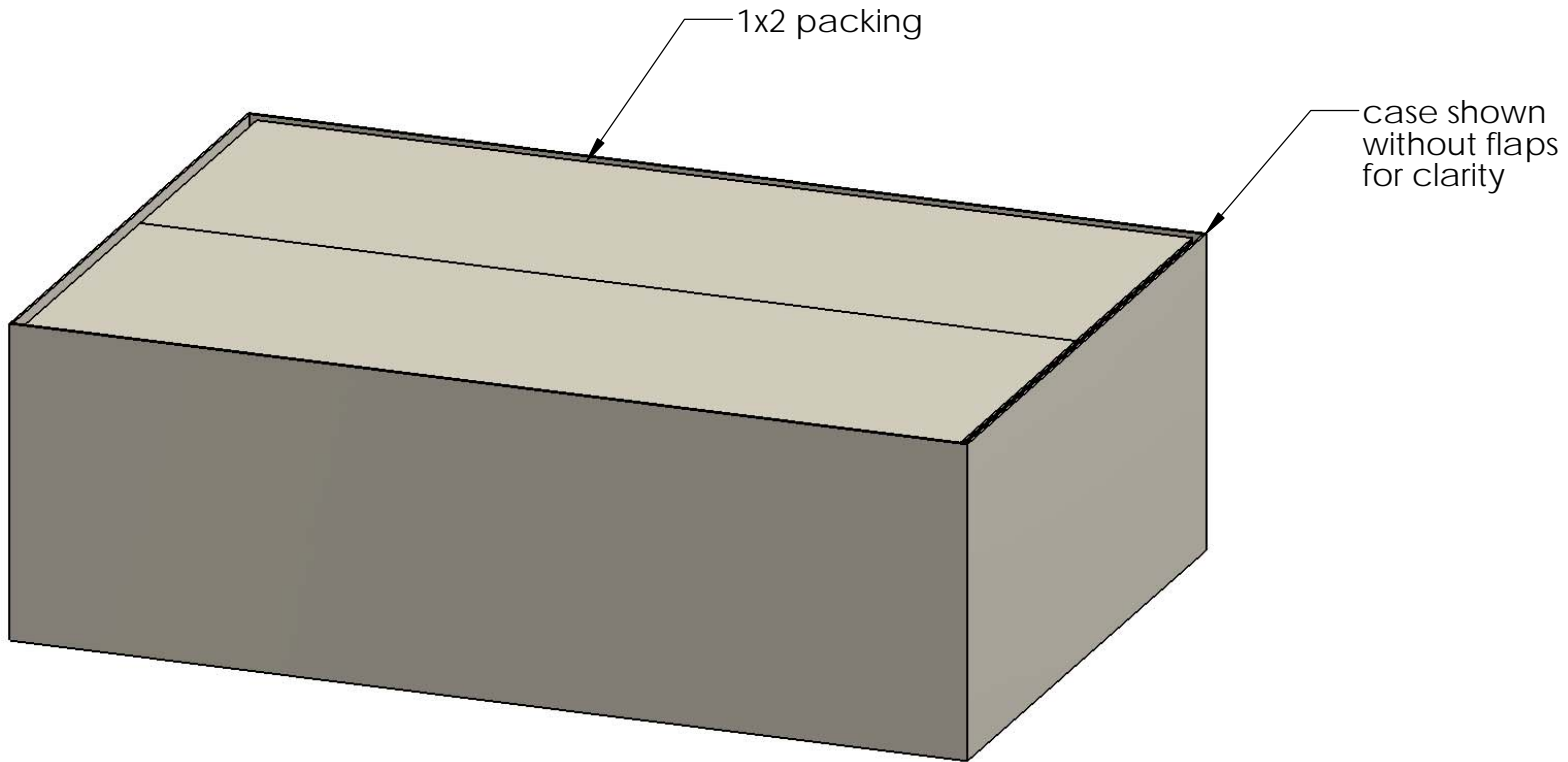


Material: Corrugated Paper
Finish: See Artwork
Weight: 1.10 LBS
Scale: 1:8
Last updated: 7/13/2015

56634-10

Product & Packaging Specs

56634 Packing
Item #: Case packing



Weight: 45.94 LBS
Scale: 1:6
Last updated: 7/13/2015

56634-10

V1.00 - Installation Instructions effective May 1, 2015 and reflects information that available as of April 10, 2014. This information is updated periodically and should not be relied upon after May 1, 2015. Please visit www.OZCOBP.com to get current information

Product & Packaging Specs

56634 Packing

Item #: Pallet packing

Item #: **56634** | **8x8-OPAK-LS**

8x8 Ornamental Post Anchor LS

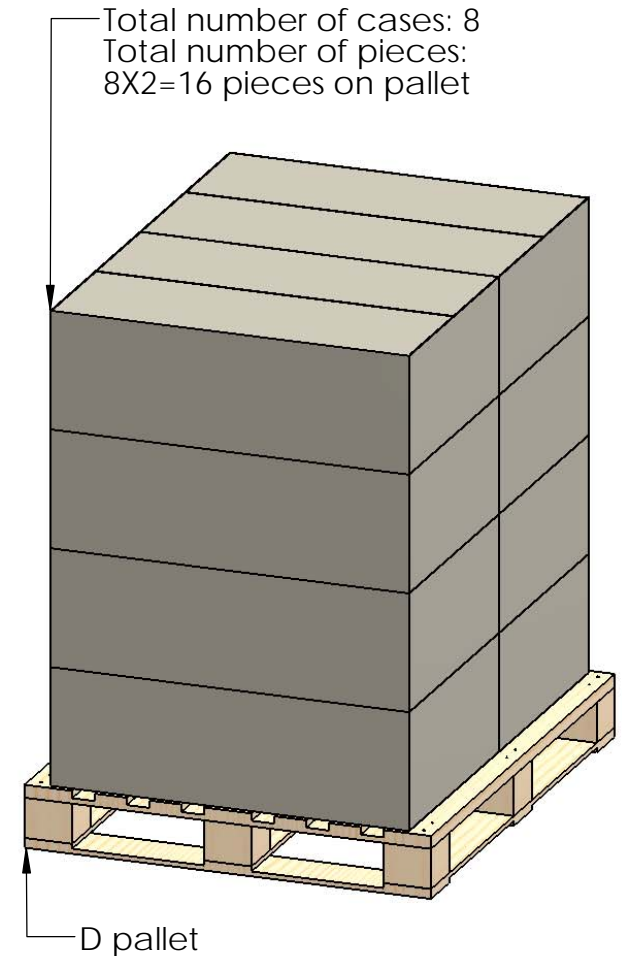
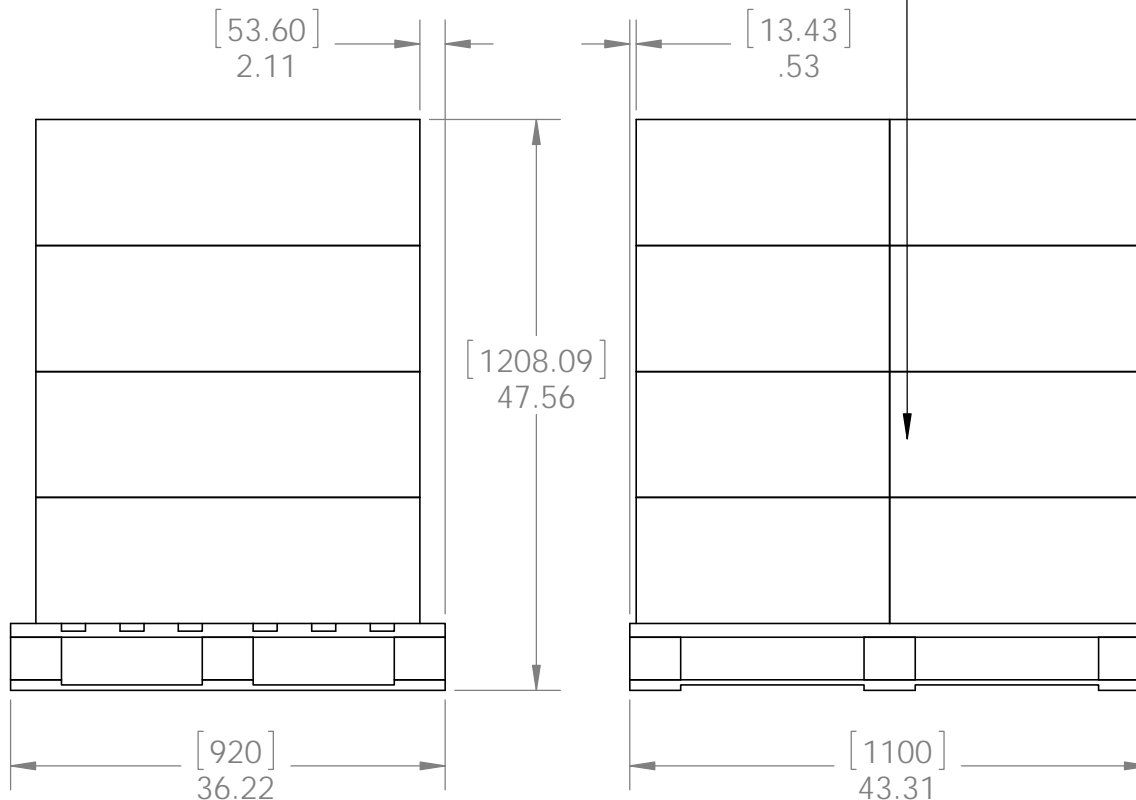
PALLET | **16 pcs**

SKU#: **56834**



Weight: 396 lbs

LOT# _____ Priority# _____



Weight: 396 LBS
Scale: 1:16
Last updated: 7/13/2015

56634-10



additional pallet packing instructions

- plywood on top layer
- strap to pallet
- clear wrap around boxes