

**DESIGN**

**PURCHASE**

**CONSTRUCT**

**ENJOY**

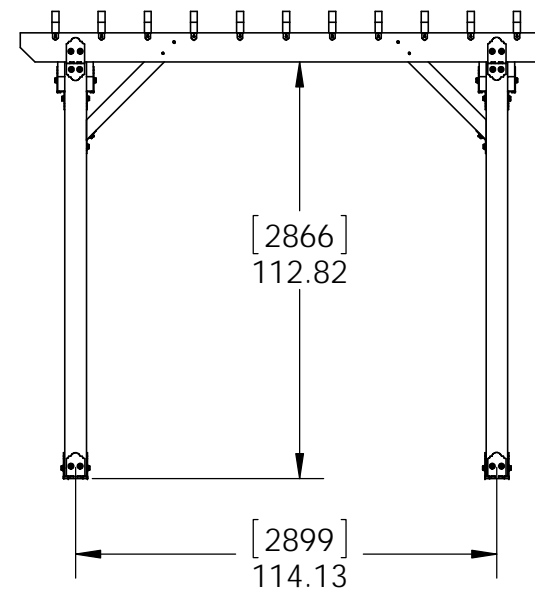
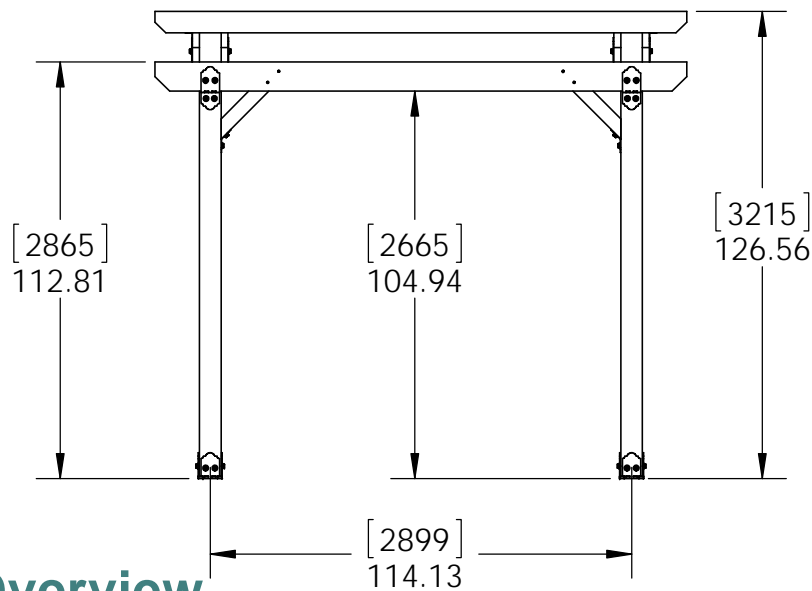
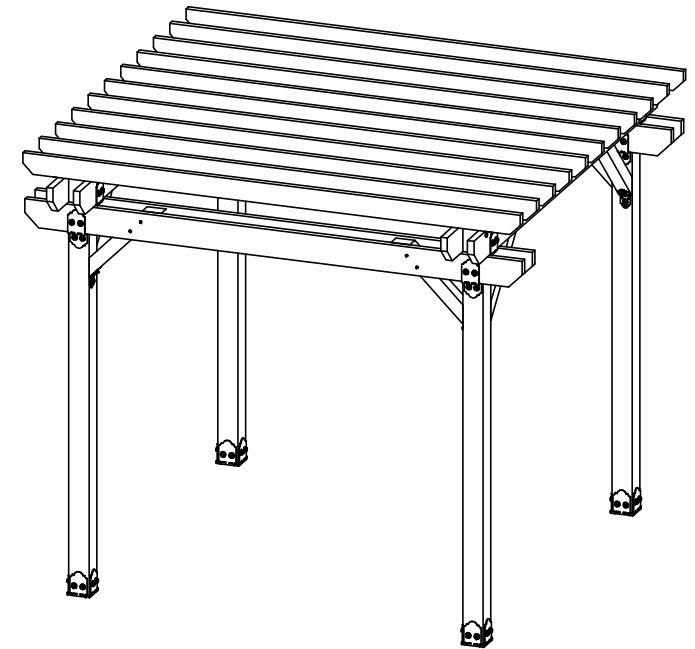
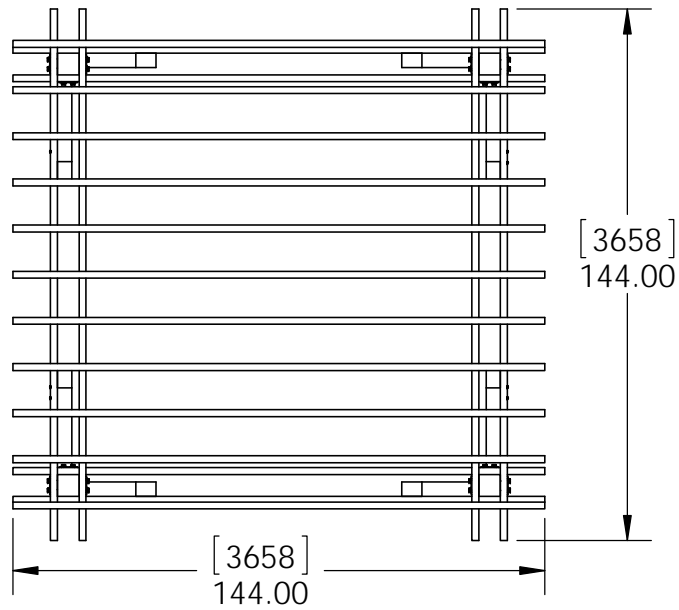
## Project 316 12x12 Pergola Double Beam



**OZCO** BUILDING PRODUCTS

Project 316 - 12x12 Pergola Double Beam

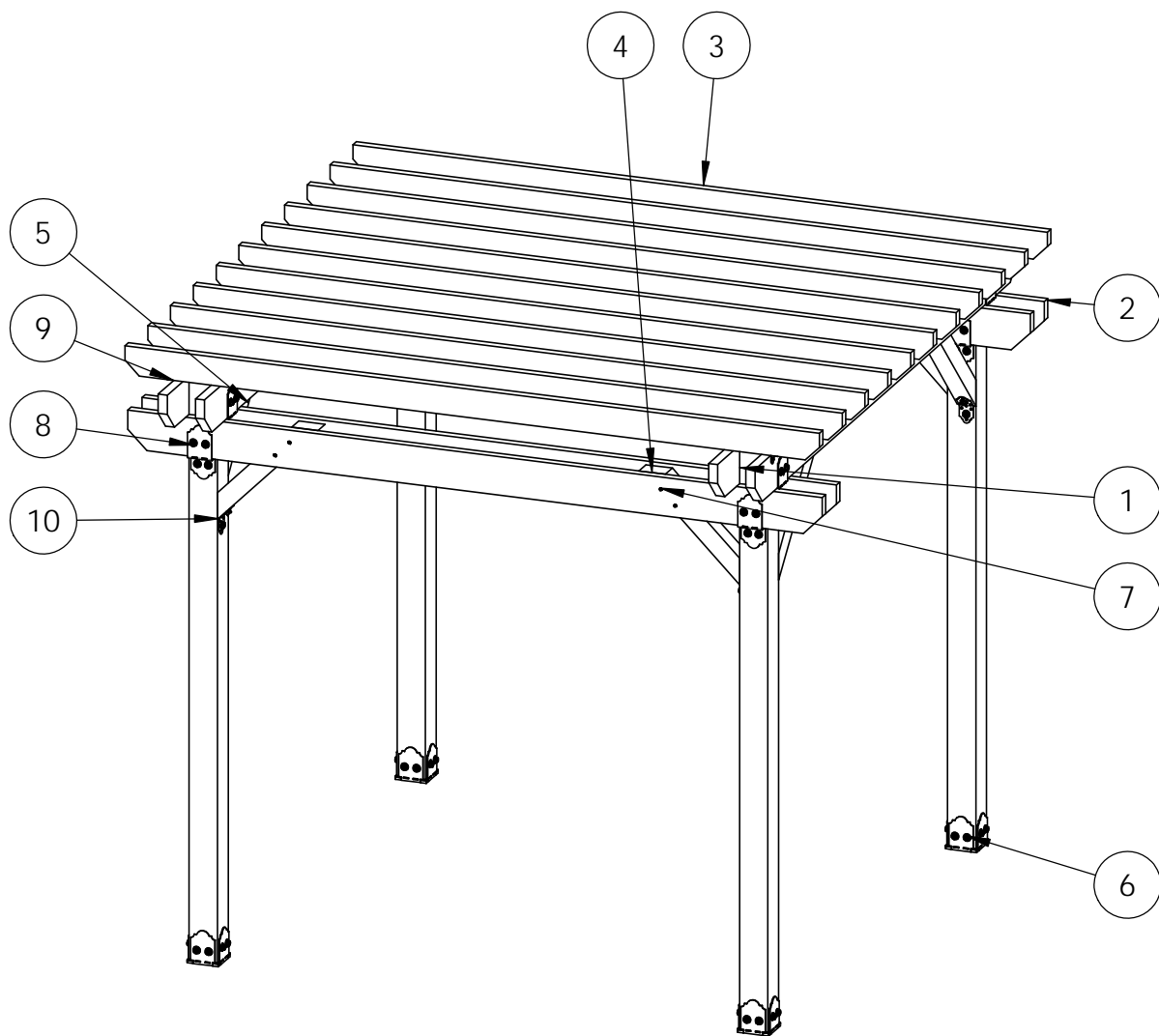
V1.00 - Installation Instructions effective May 1, 2015 and reflects information that available as of April 10, 2014. This information is updated periodically and should not be relied upon after May 1, 2015. Please visit [www.OZCOBP.com](http://www.OZCOBP.com) to get current information



## Overview

Project 316 - 12x12 Pergola Double Beam

V1.00 - Installation Instructions effective May 1, 2015 and reflects information that available as of April 10, 2014. This information is updated periodically and should not be relied upon after May 1, 2015. Please visit [www.OZCOBP.com](http://www.OZCOBP.com) to get current information

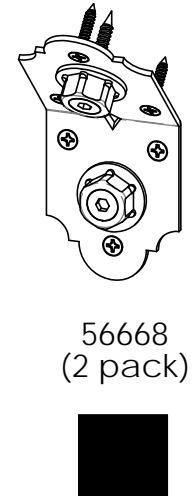
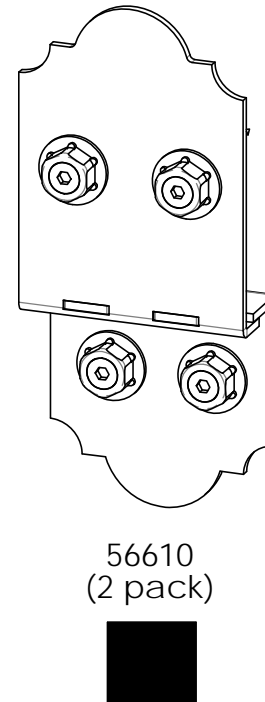
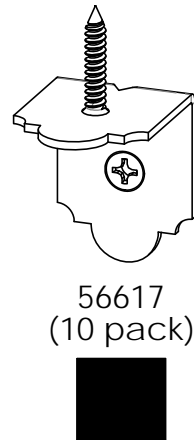
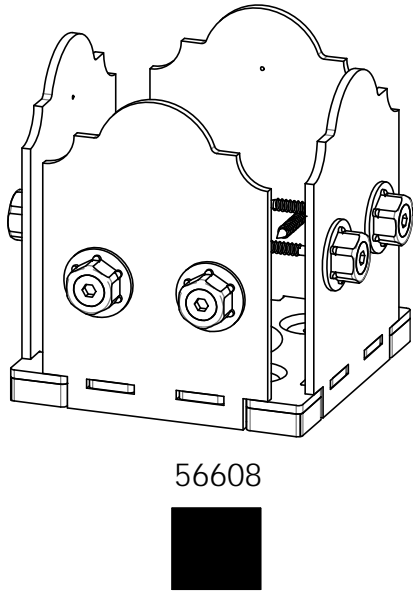


ITEM NO.	QTY.	PART NUMBER	DESCRIPTION
1	4	6x6 Cedar Post	6x6x120.00
2	8	2x8 Cedar Board	2x8x144.00
3	11	2x6 Cedar Board	2x6x144.00
4	4	4x4 Cedar Support	see Cutlist
5	4	4x4 Cedar Support	see Cutlist
6	4	56608	Assembly, 6x6 Post Base
7	1	56628	Screw, OWT 5-3/4" (145mm) Timber
8	8	56610	8" Post to Beam
9	3	56617	2" Standard Rafter Clip
10	2	56668	4" Flush Inside 45 (FI45-LS-4)

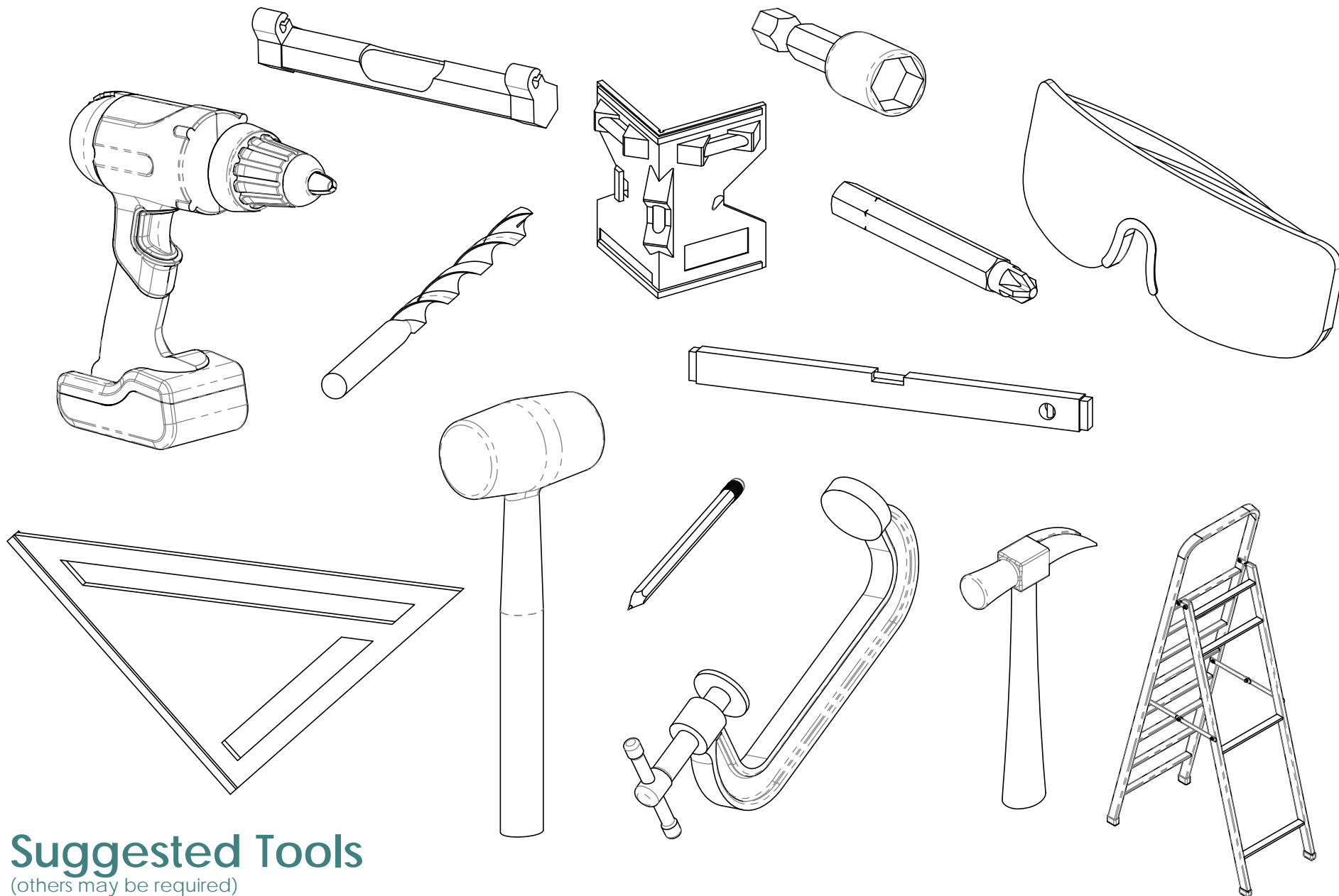
## Bill of Material

Project 316 - 12x12 Pergola Double Beam

V1.00 - Installation Instructions effective May 1, 2015 and reflects information that available as of April 10, 2014. This information is updated periodically and should not be relied upon after May 1, 2015. Please visit [www.OZCOBP.com](http://www.OZCOBP.com) to get current information



install Ozco product with  
instructions provided in packaging

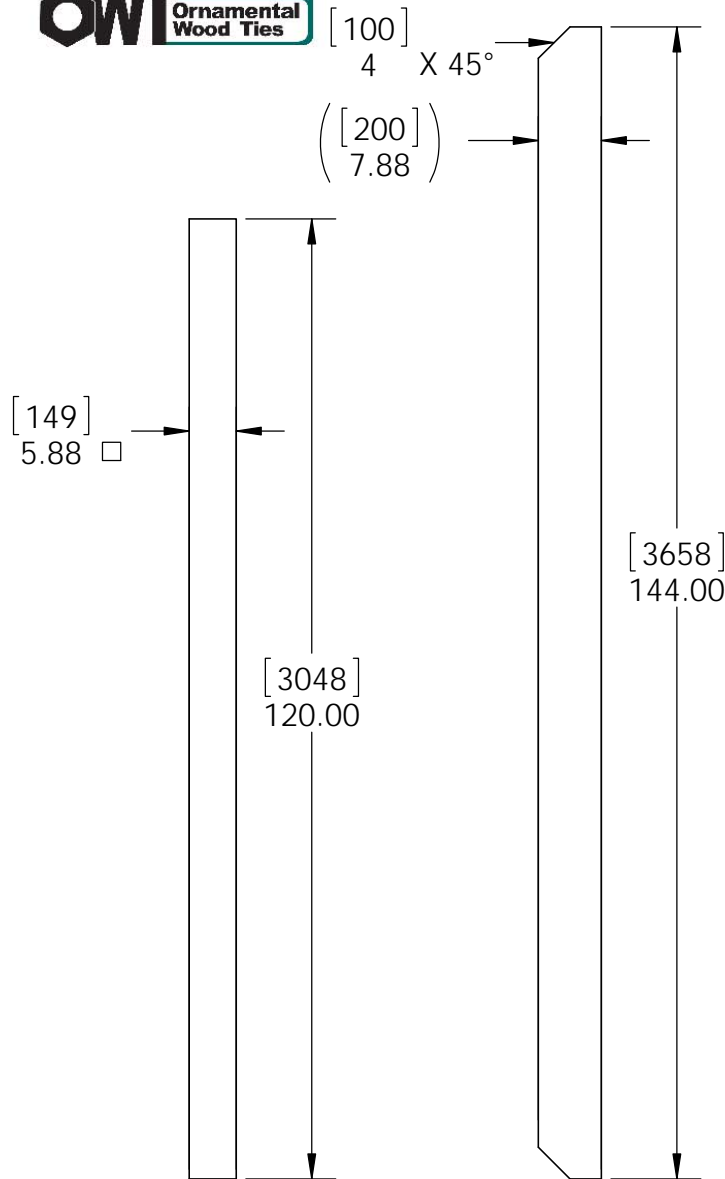


## Suggested Tools

(others may be required)

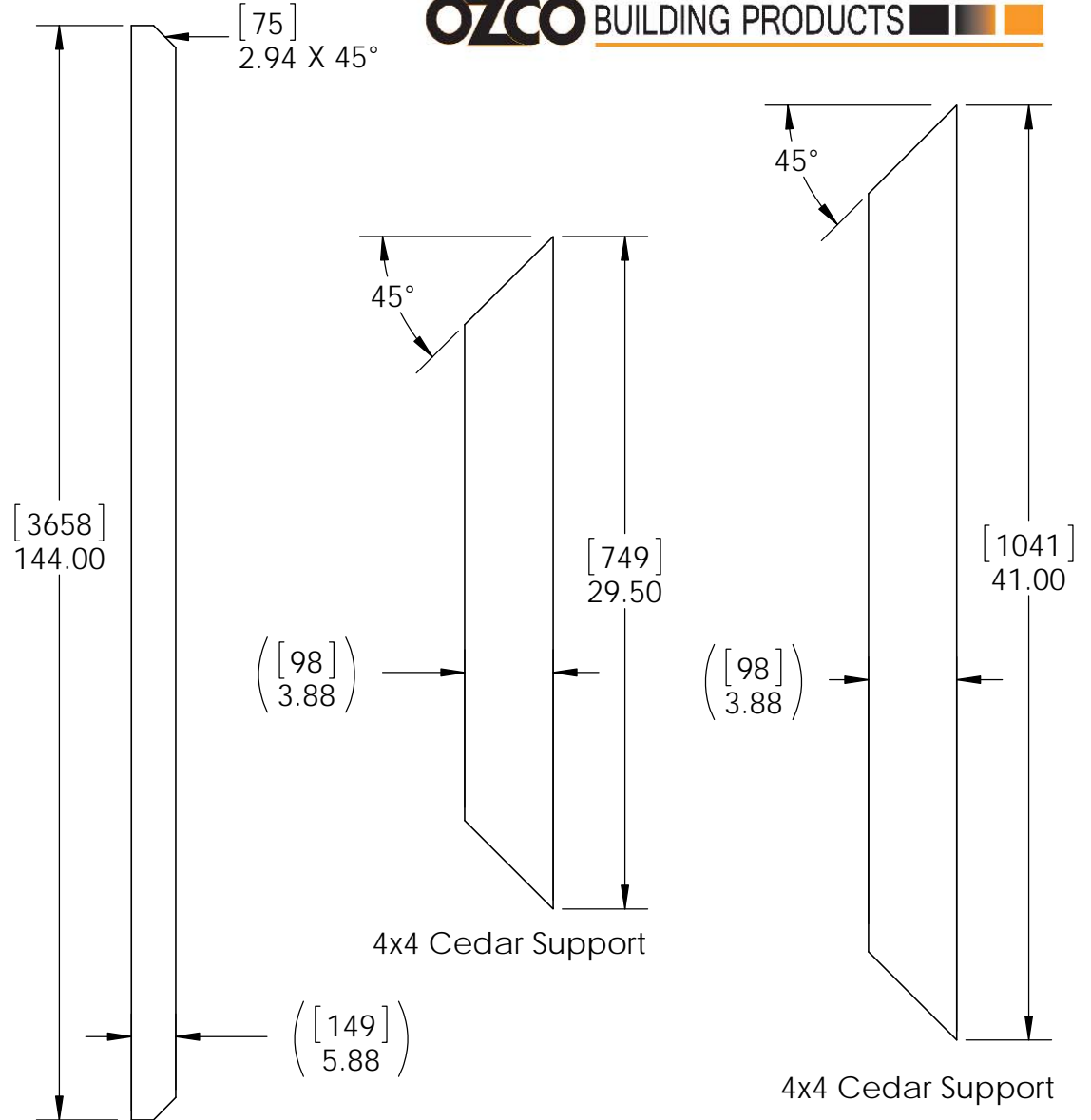
**Project 316 - 12x12 Pergola Double Beam**

V1.00 - Installation Instructions effective May 1, 2015 and reflects information that available as of April 10, 2014. This information is updated periodically and should not be relied upon after May 1, 2015. Please visit [www.OZCOBP.com](http://www.OZCOBP.com) to get current information



6x6 Cedar Post

2x8 Cedar Board

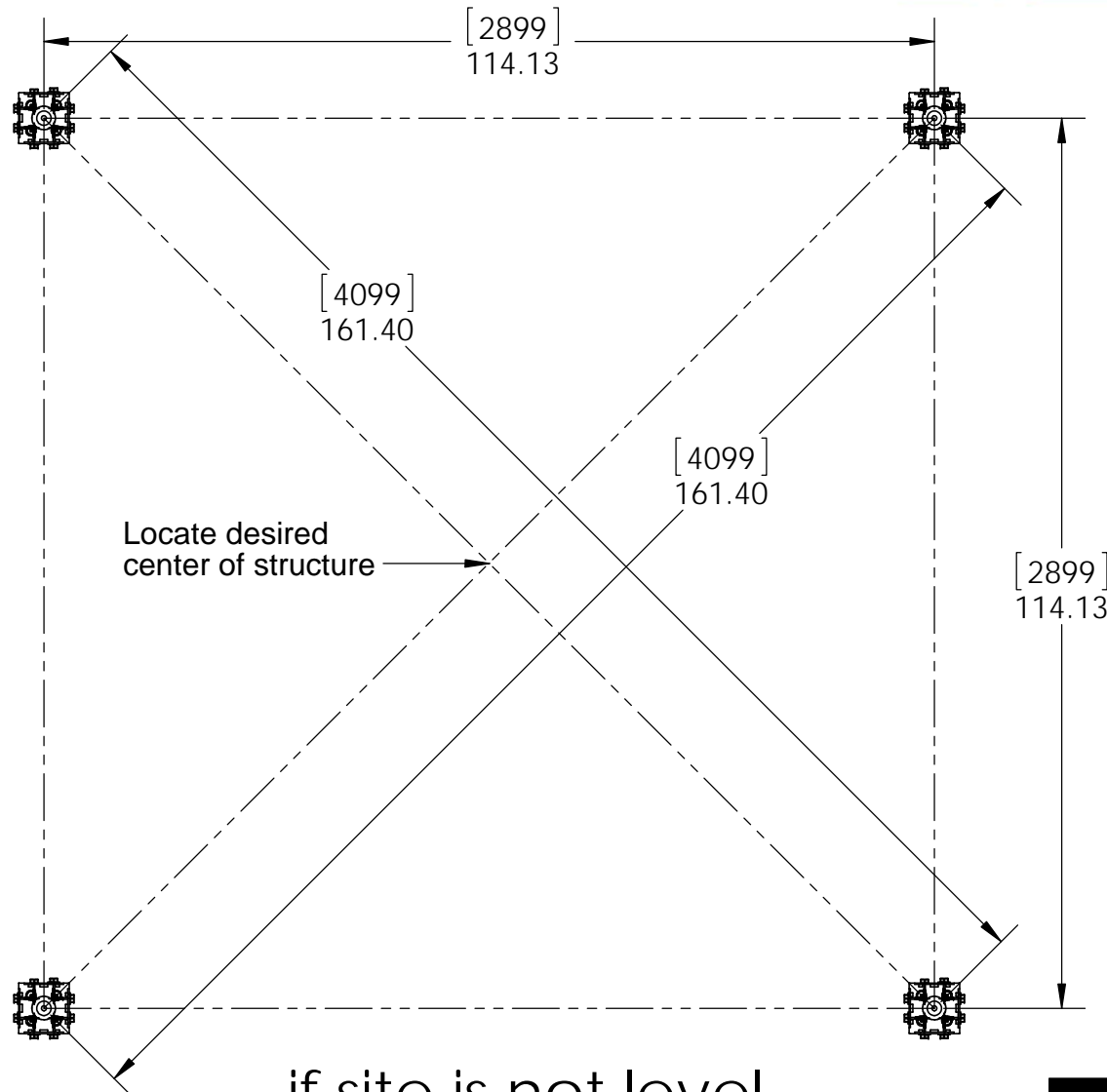


4x4 Cedar Support

4x4 Cedar Support

## Cutlist

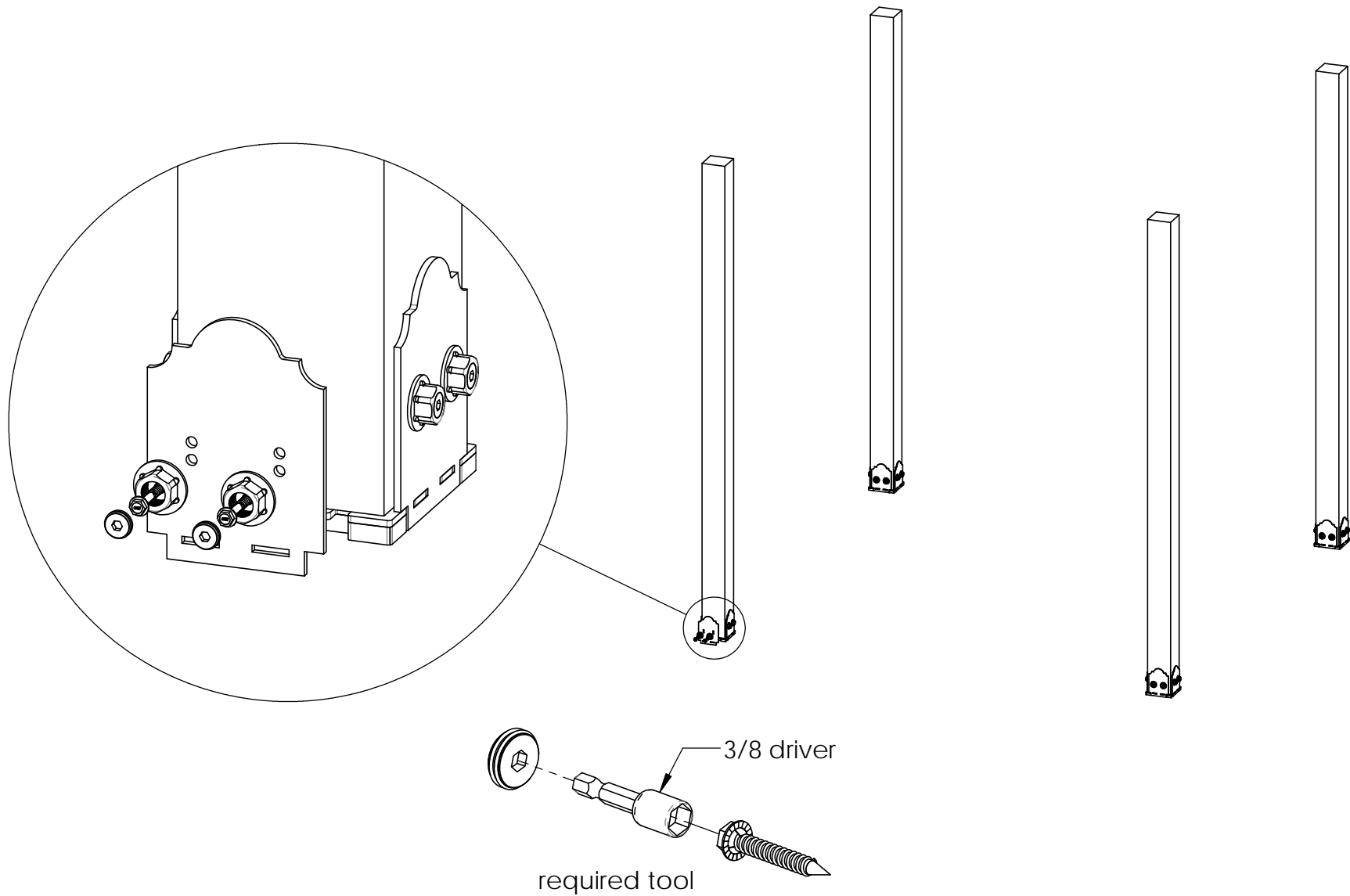
Project 316 - 12x12 Pergola Double Beam



if site is not level,  
see Ozco Site Leveling instruction

**site**

Project 316 - 12x12 Pergola Double Beam

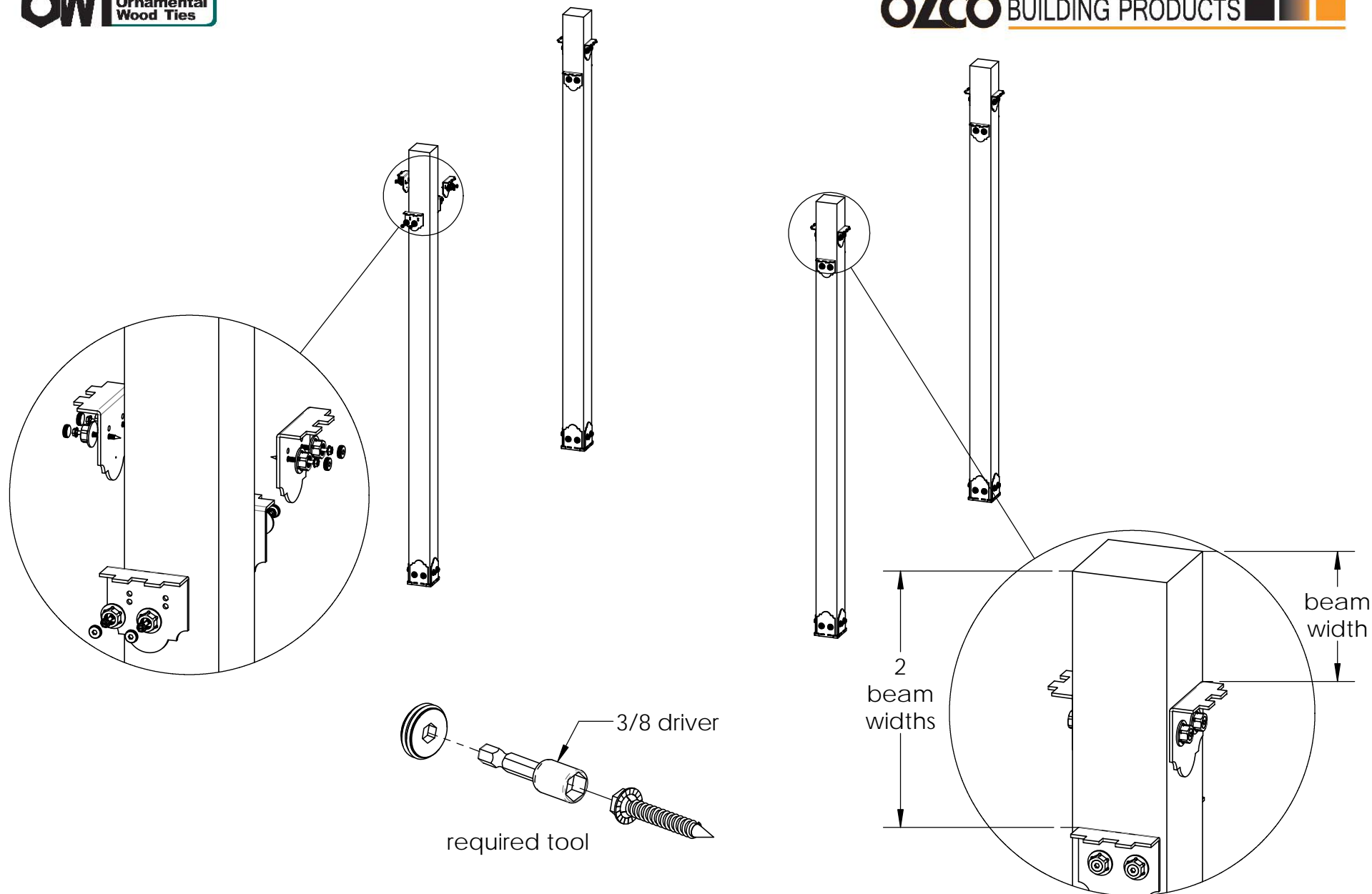


## step 1

Project 316 - 12x12 Pergola Double Beam

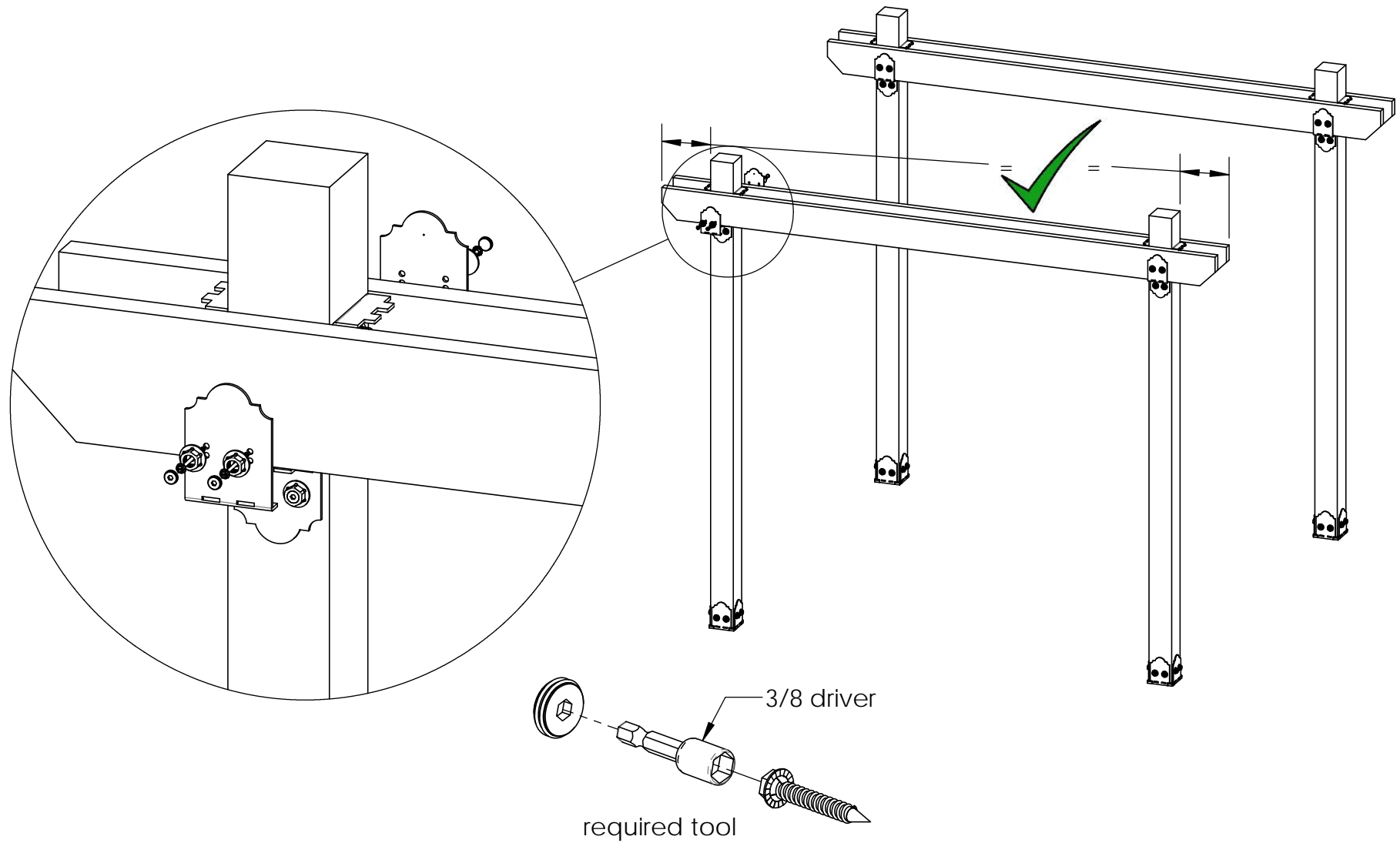
V1.00 - Installation Instructions effective May 1, 2015 and reflects information that available as of April 10, 2014. This information is updated periodically and should not be relied upon after May 1, 2015. Please visit [www.OZCOBP.com](http://www.OZCOBP.com) to get current information





## step 2

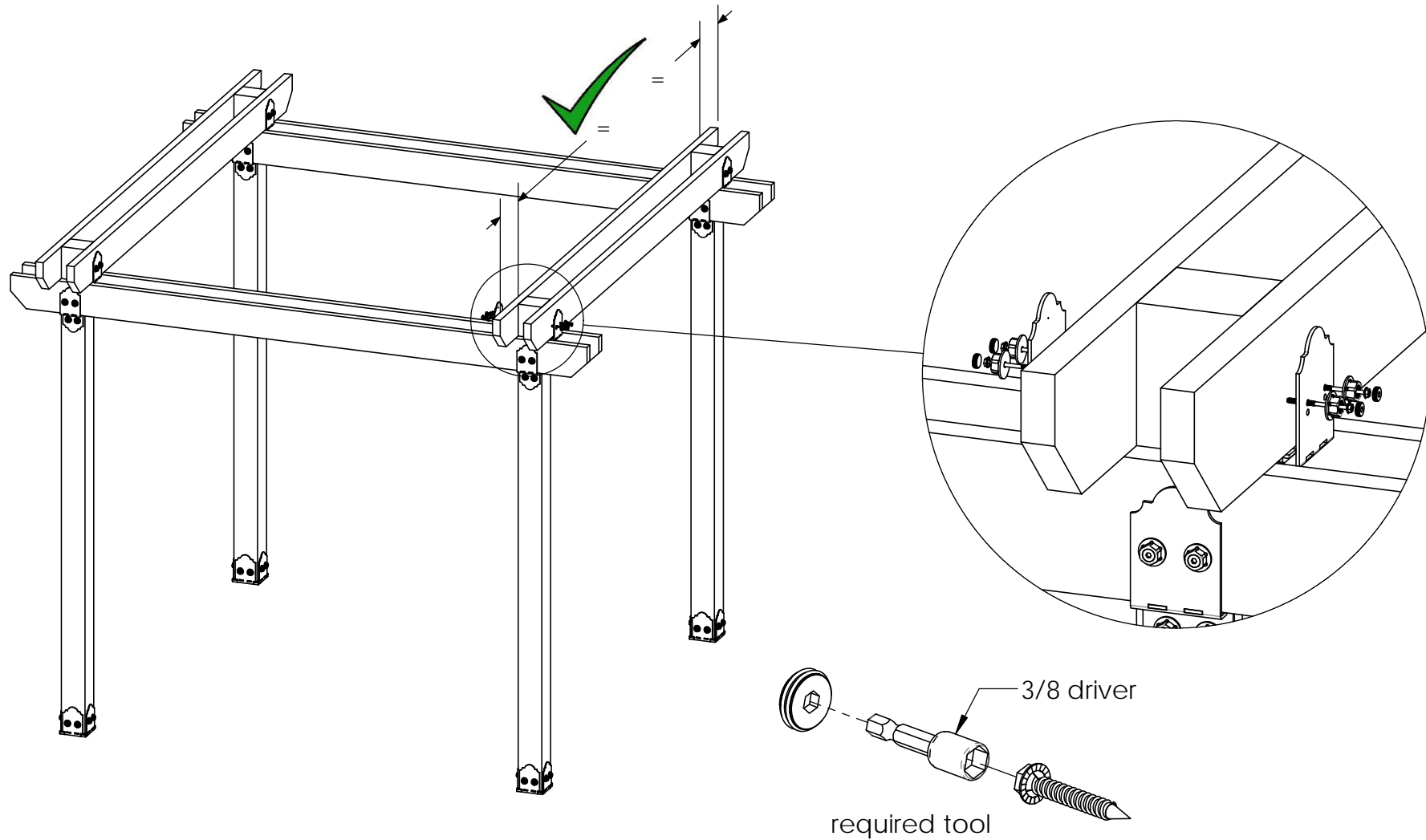
Project 316 - 12x12 Pergola Double Beam



## step 3

Project 316 - 12x12 Pergola Double Beam

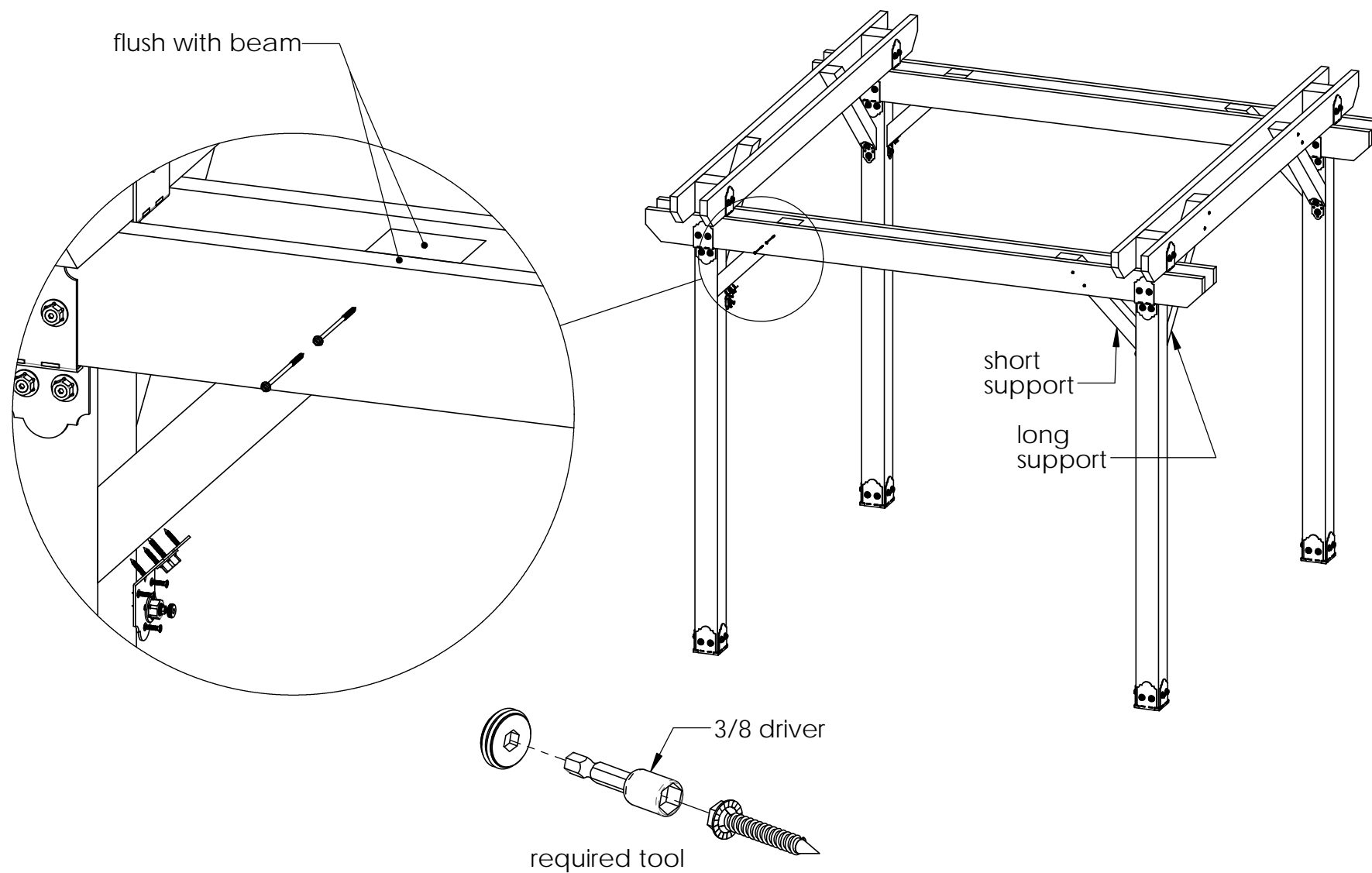
V1.00 - Installation Instructions effective May 1, 2015 and reflects information that available as of April 10, 2014. This information is updated periodically and should not be relied upon after May 1, 2015. Please visit [www.OZCOBP.com](http://www.OZCOBP.com) to get current information



## step 4

Project 316 - 12x12 Pergola Double Beam

V1.00 - Installation Instructions effective May 1, 2015 and reflects information that available as of April 10, 2014. This information is updated periodically and should not be relied upon after May 1, 2015. Please visit [www.OZCOBP.com](http://www.OZCOBP.com) to get current information

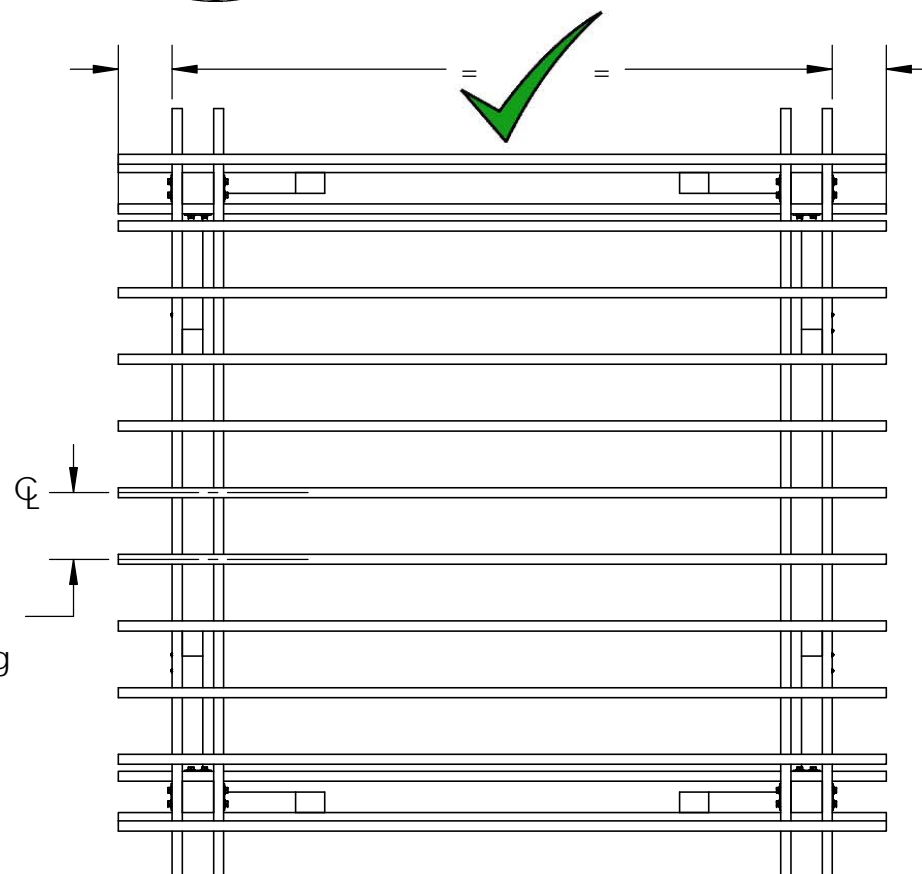
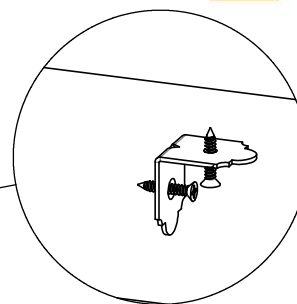
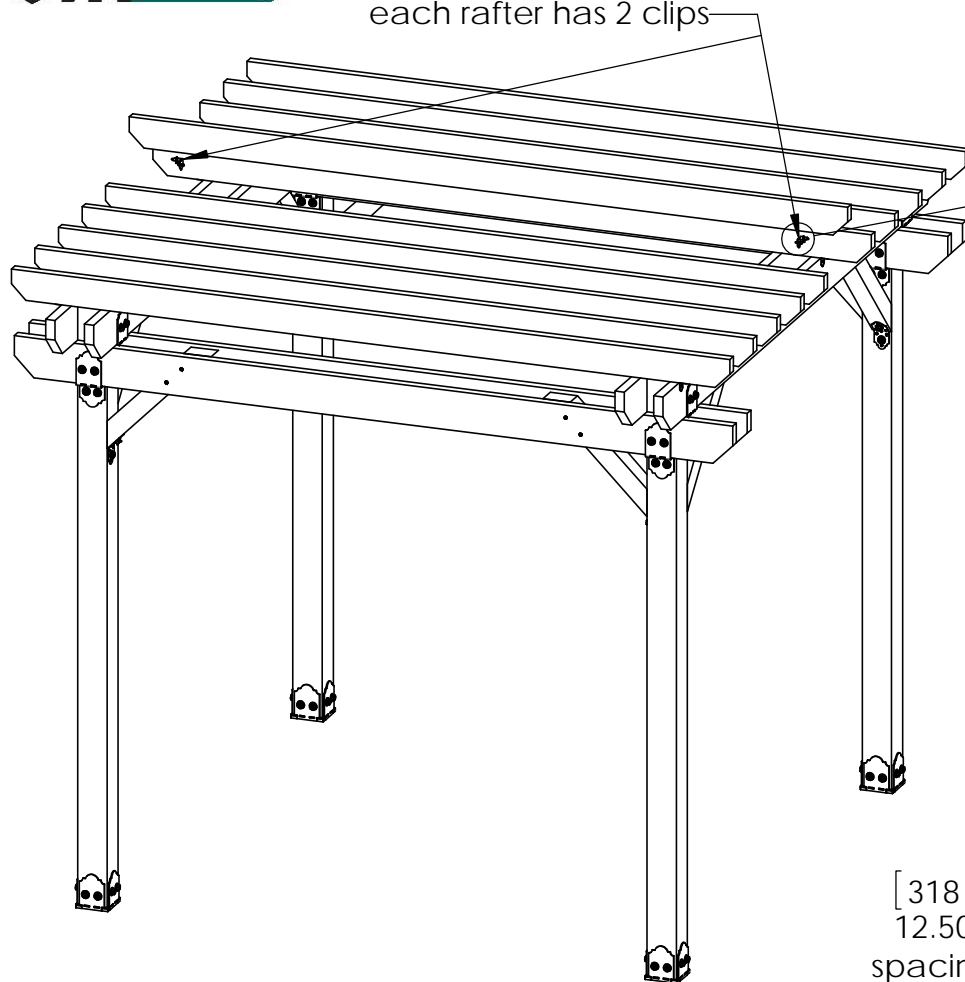


## step 5

Project 316 - 12x12 Pergola Double Beam

V1.00 - Installation Instructions effective May 1, 2015 and reflects information that available as of April 10, 2014. This information is updated periodically and should not be relied upon after May 1, 2015. Please visit [www.OZCOBP.com](http://www.OZCOBP.com) to get current information

install on both ends  
each rafter has 2 clips



## step 6

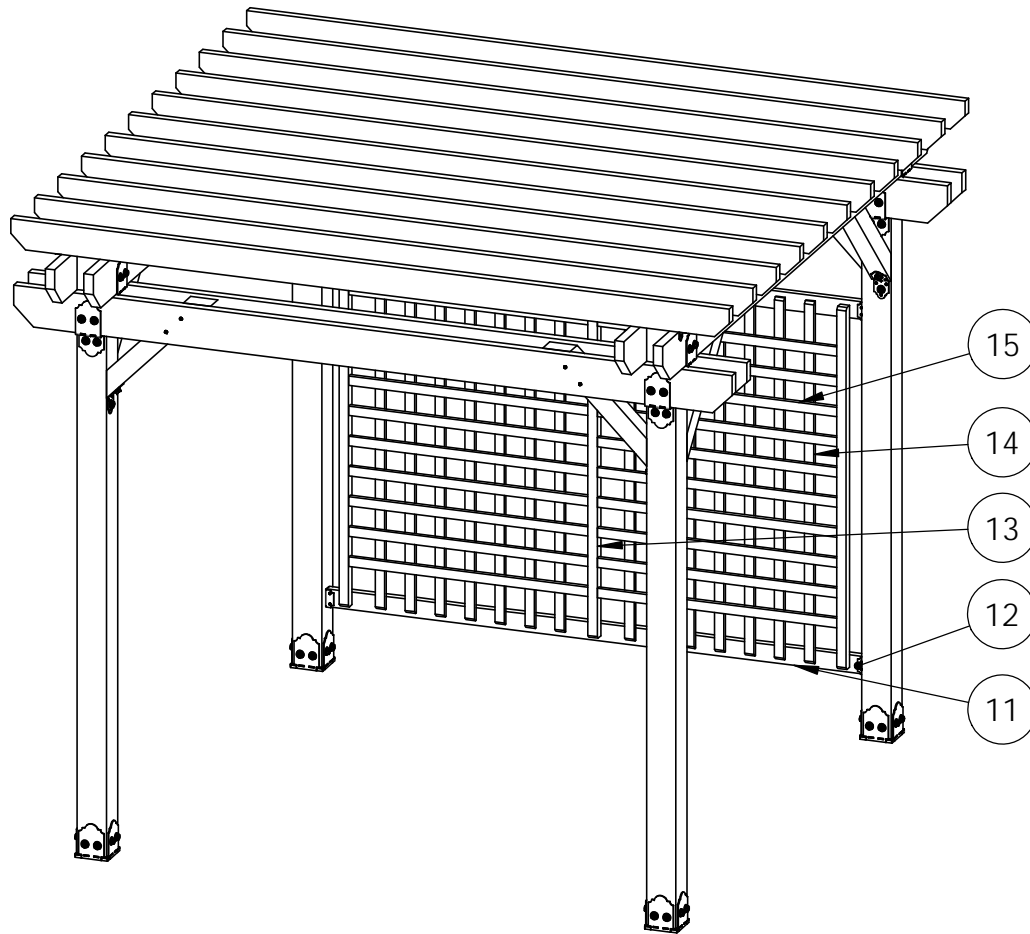
Project 316 - 12x12 Pergola Double Beam



## Lattice option

Project 316 - 12x12 Pergola Double Beam

V1.00 - Installation Instructions effective May 1, 2015 and reflects information that available as of April 10, 2014. This information is updated periodically and should not be relied upon after May 1, 2015. Please visit [www.OZCOBP.com](http://www.OZCOBP.com) to get current information

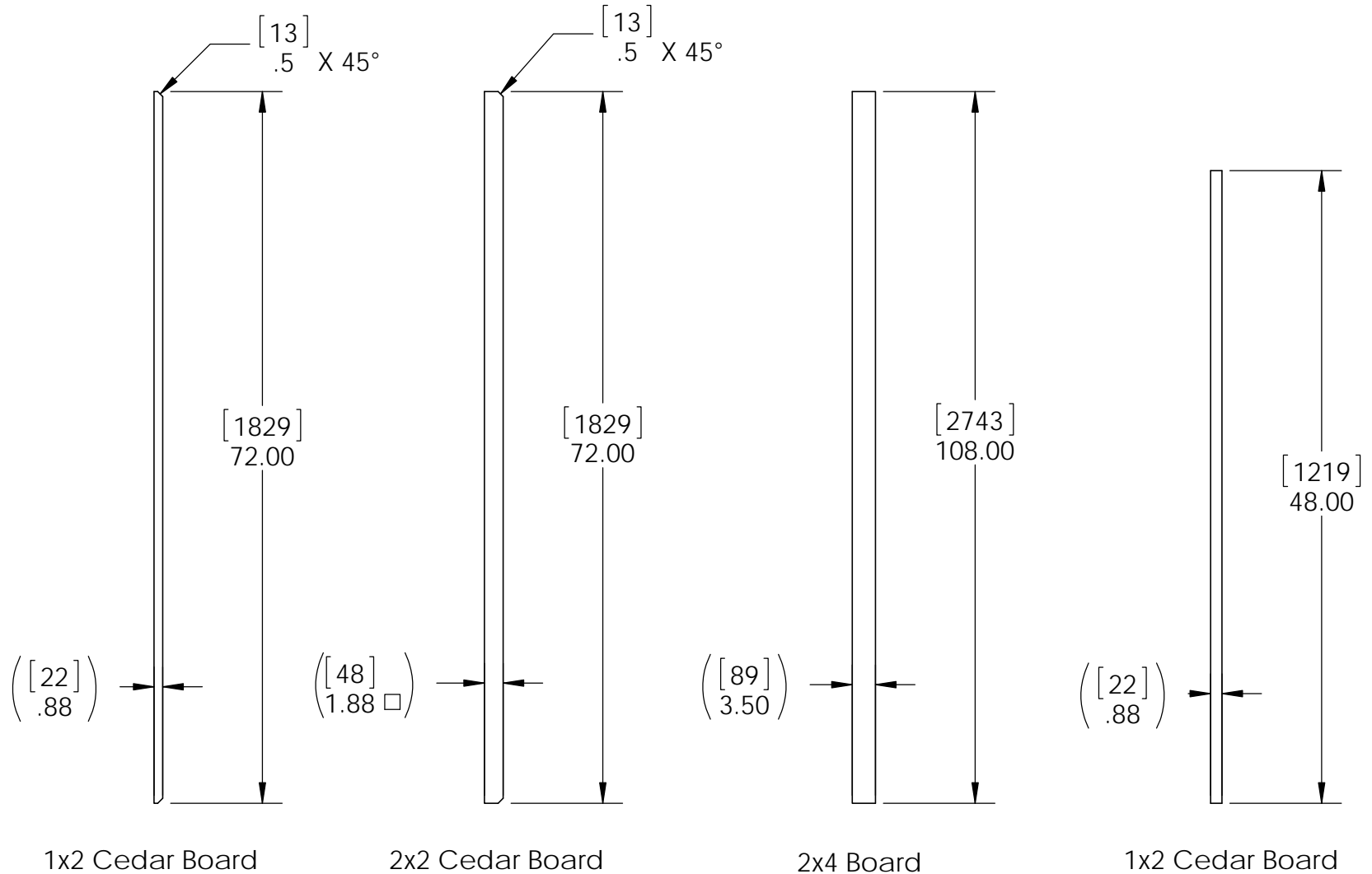


ITEM NO.	QTY.	PART NUMBER	DESCRIPTION
11	2	56641	2x4 Top Rail Saddle
12	2	2x4 Board	2x4x108.00
13	3	2x2 Cedar Board	2x2x72.00
14	14	1x2 Cedar Board	1x2x72.00
15	20	1x2 Cedar Board	1x2x48.00

## Bill of Material-Lattice option

Project 316 - 12x12 Pergola Double Beam

V1.00 - Installation Instructions effective May 1, 2015 and reflects information that available as of April 10, 2014. This information is updated periodically and should not be relied upon after May 1, 2015. Please visit [www.OZCOBP.com](http://www.OZCOBP.com) to get current information

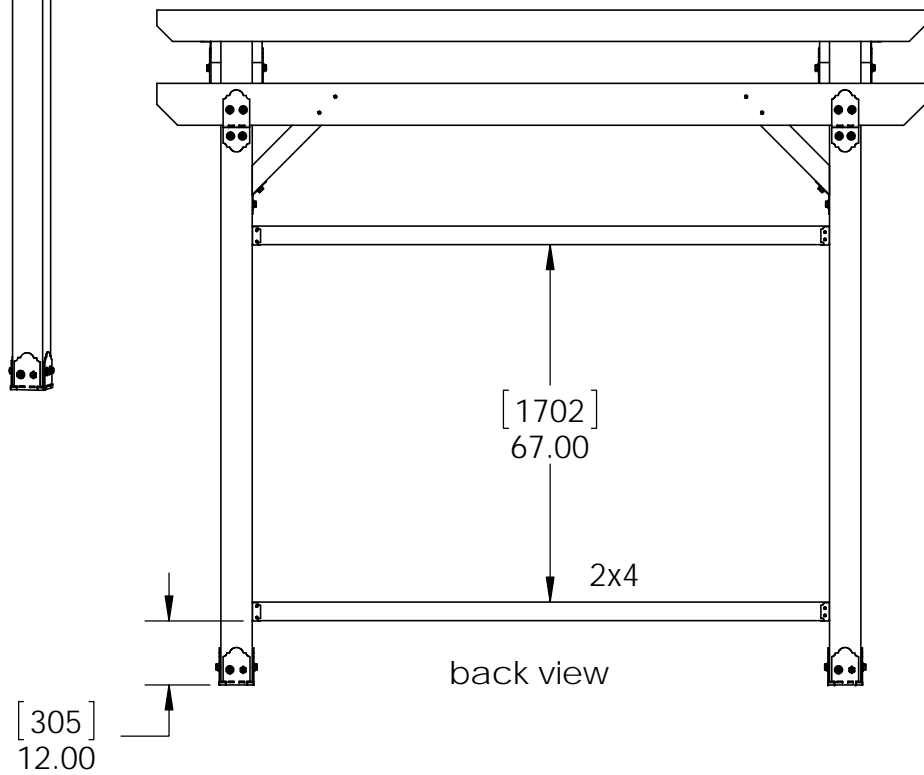
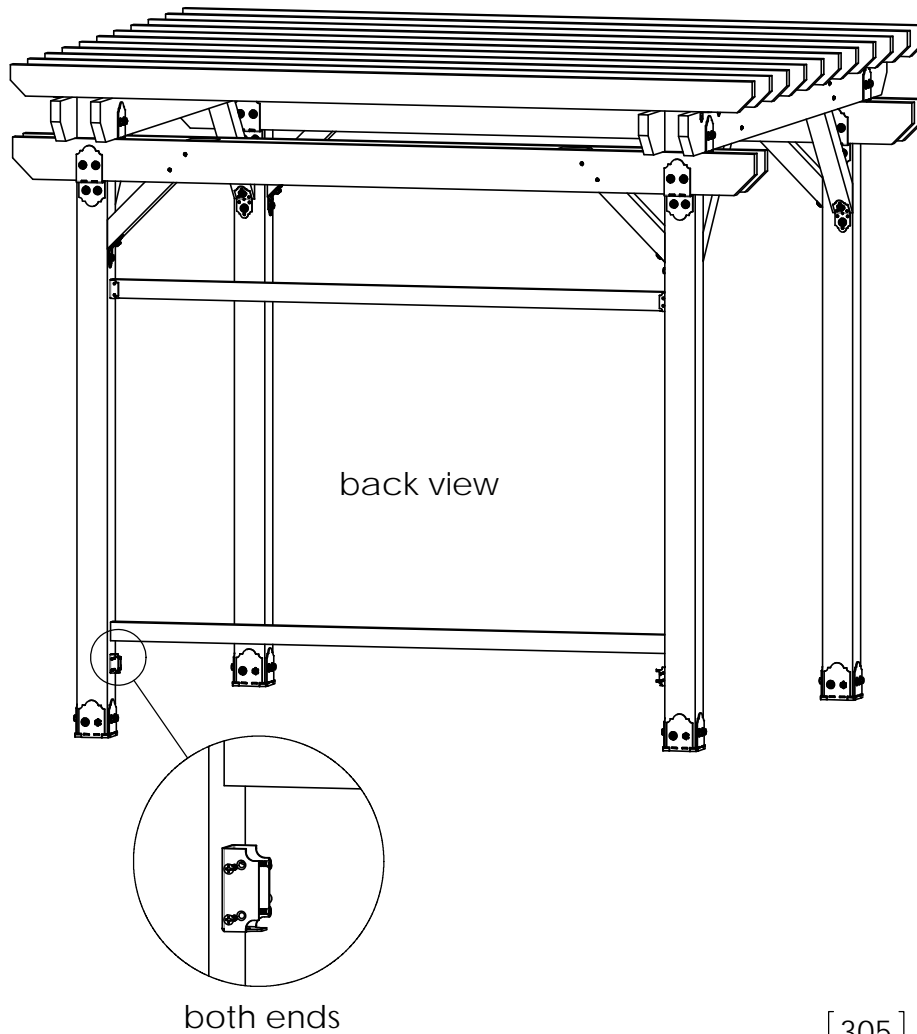


## Cutlist-Lattice option

Project 316 - 12x12 Pergola Double Beam

V1.00 - Installation Instructions effective May 1, 2015 and reflects information that available as of April 10, 2014. This information is updated periodically and should not be relied upon after May 1, 2015. Please visit [www.OZCOBP.com](http://www.OZCOBP.com) to get current information

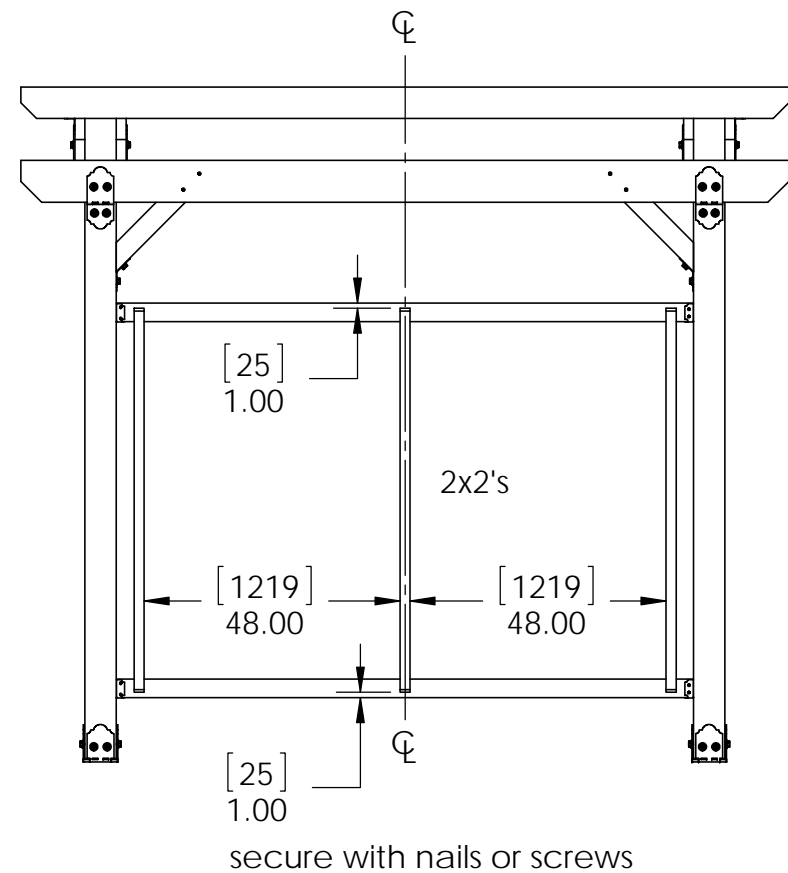
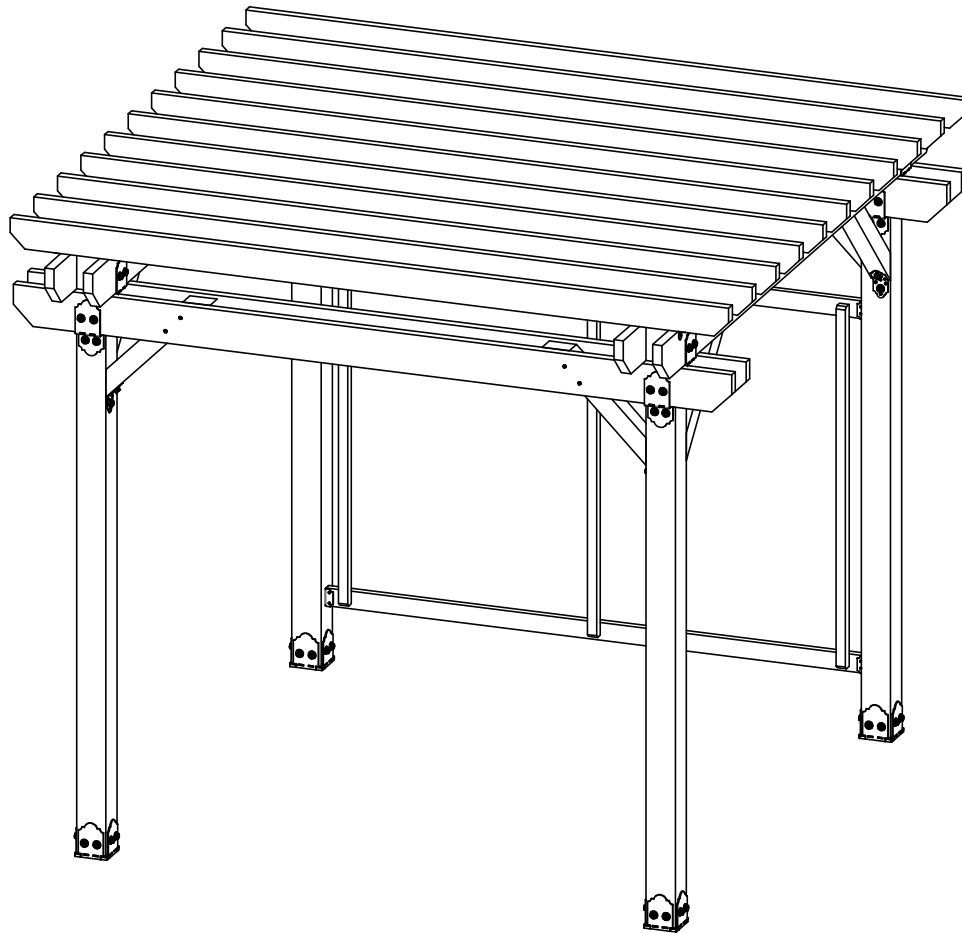




## Lattice step 1

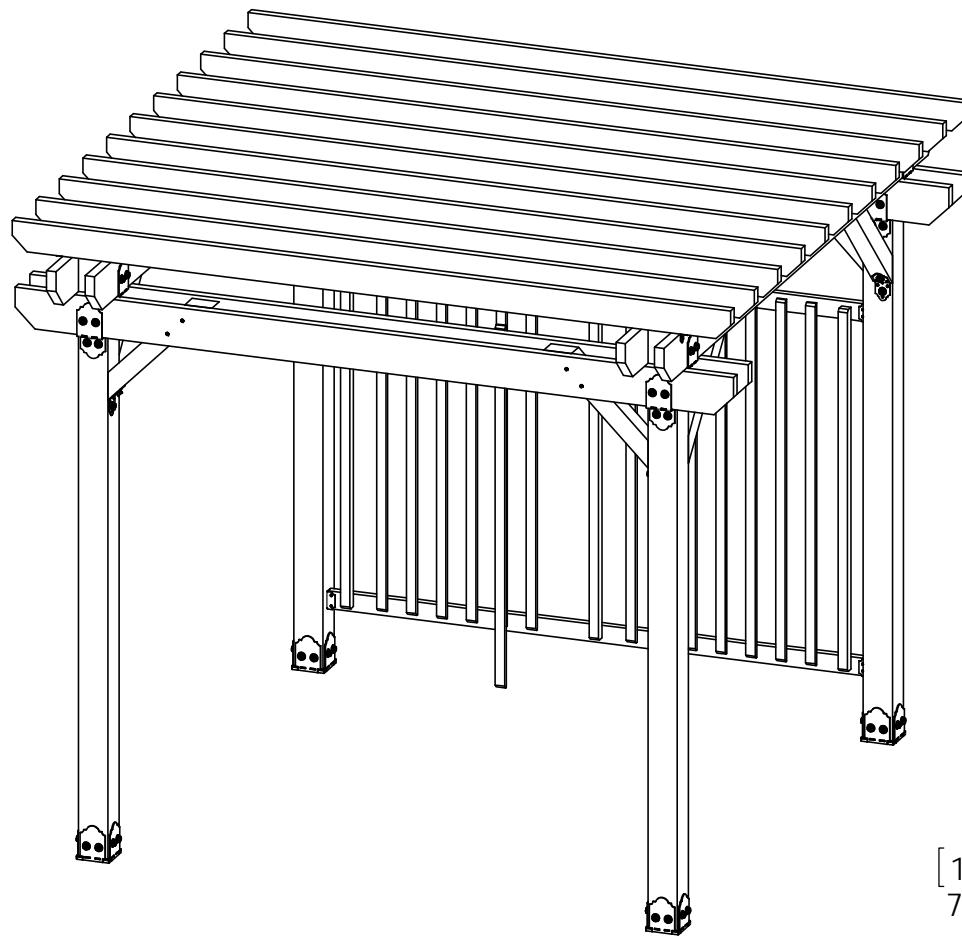
Project 316 - 12x12 Pergola Double Beam

V1.00 - Installation Instructions effective May 1, 2015 and reflects information that available as of April 10, 2014. This information is updated periodically and should not be relied upon after May 1, 2015. Please visit [www.OZCOBP.com](http://www.OZCOBP.com) to get current information

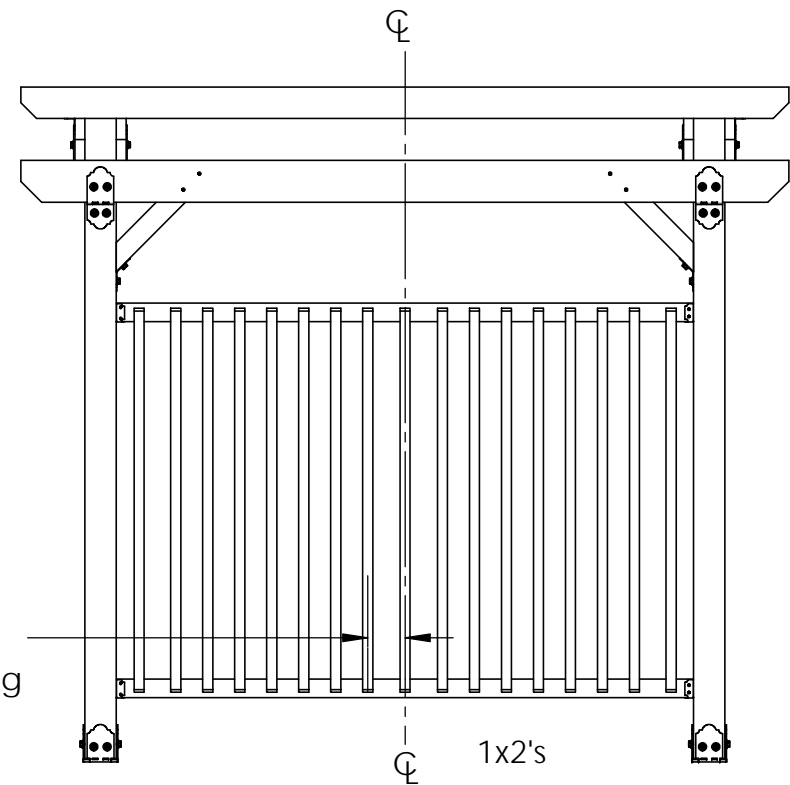


## Lattice step 2

Project 316 - 12x12 Pergola Double Beam



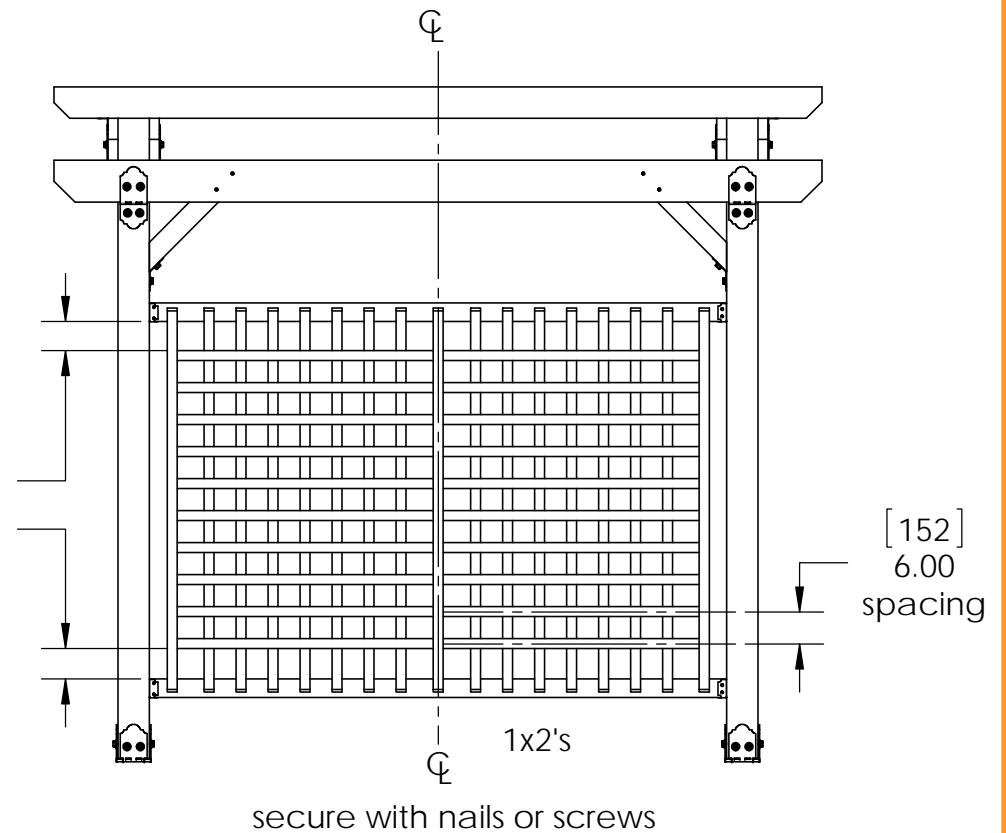
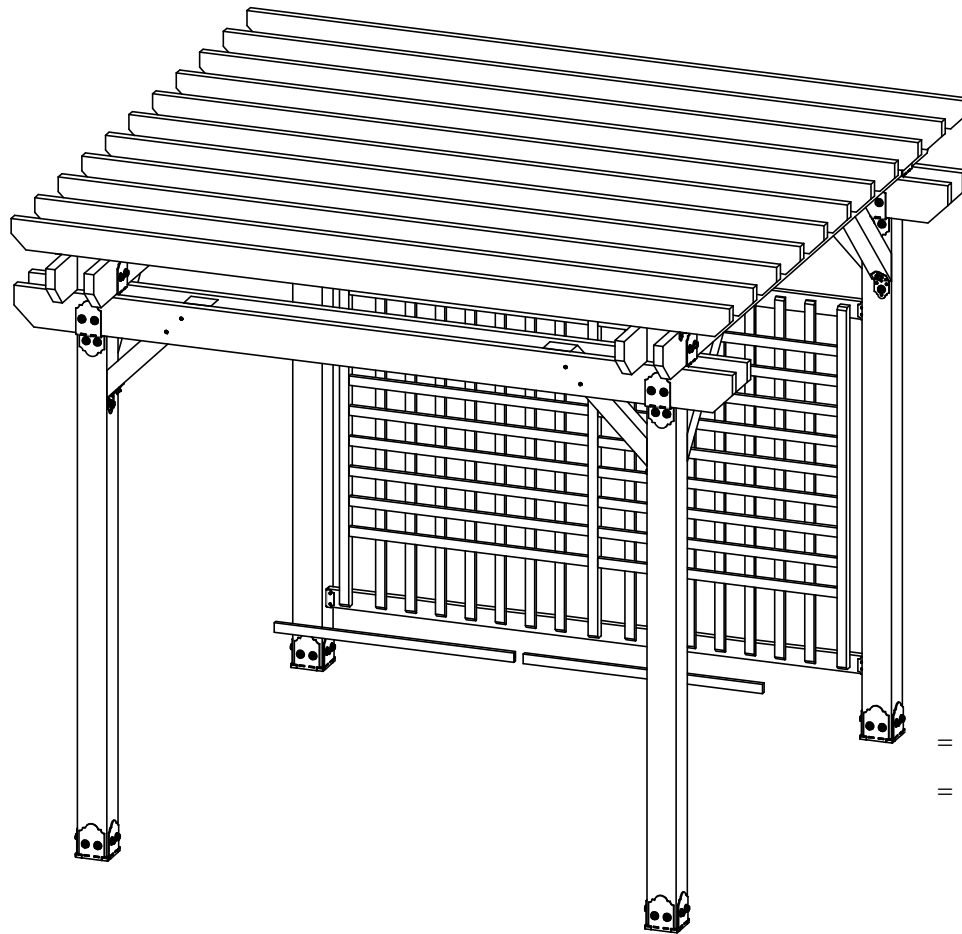
[ 178 ]  
7.00  
spacing



secure with nails or screws

## Lattice step 3

Project 316 - 12x12 Pergola Double Beam



## Lattice step 4

Project 316 - 12x12 Pergola Double Beam