

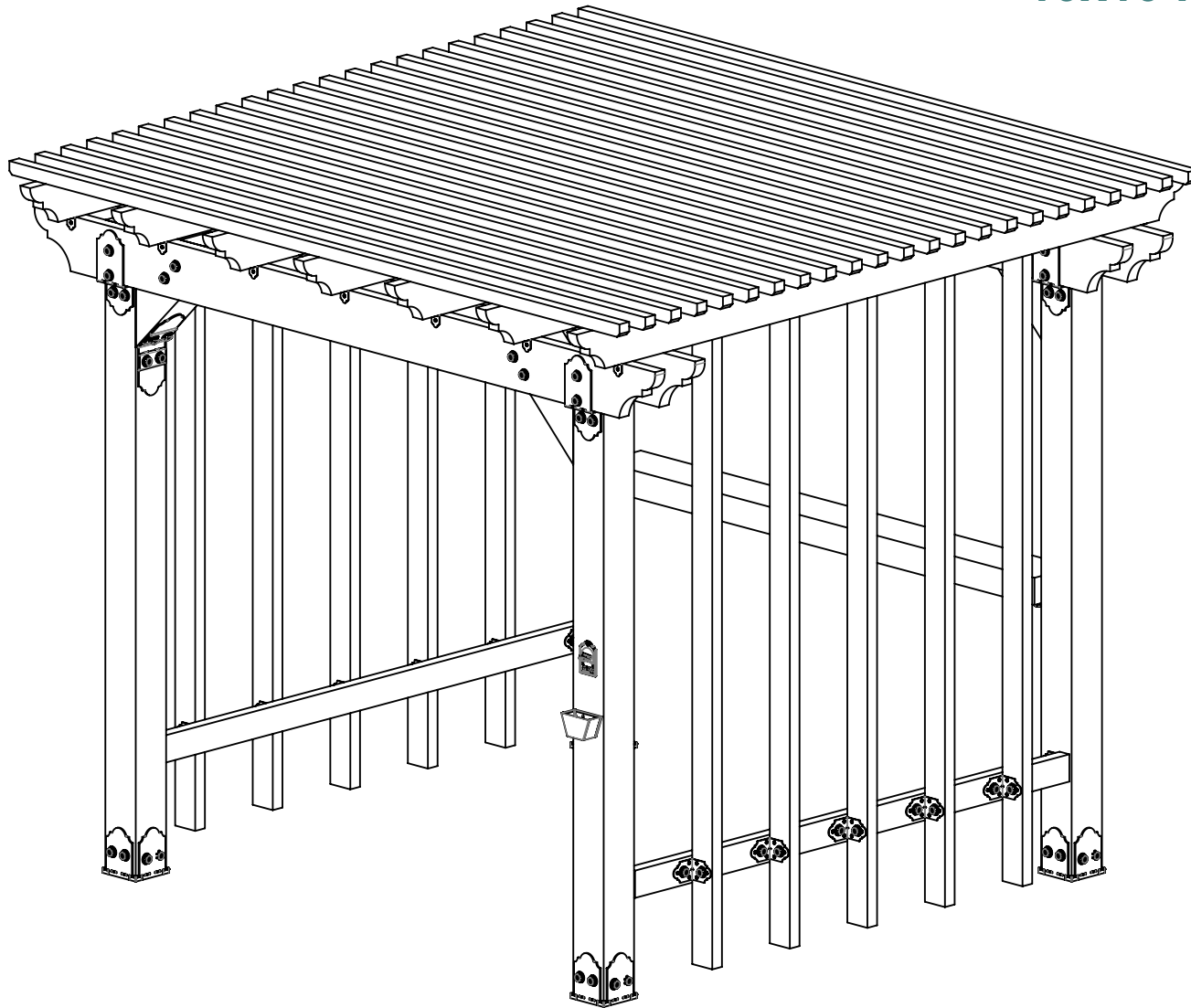
DESIGN

PURCHASE

CONSTRUCT

ENJOY

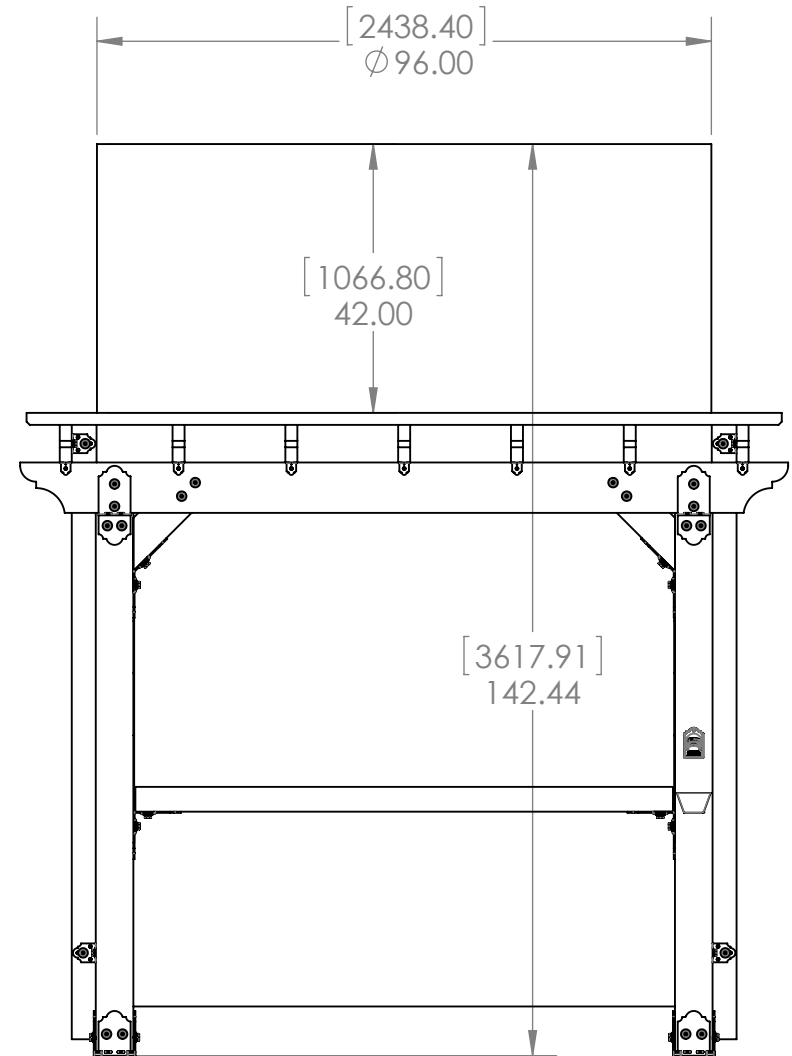
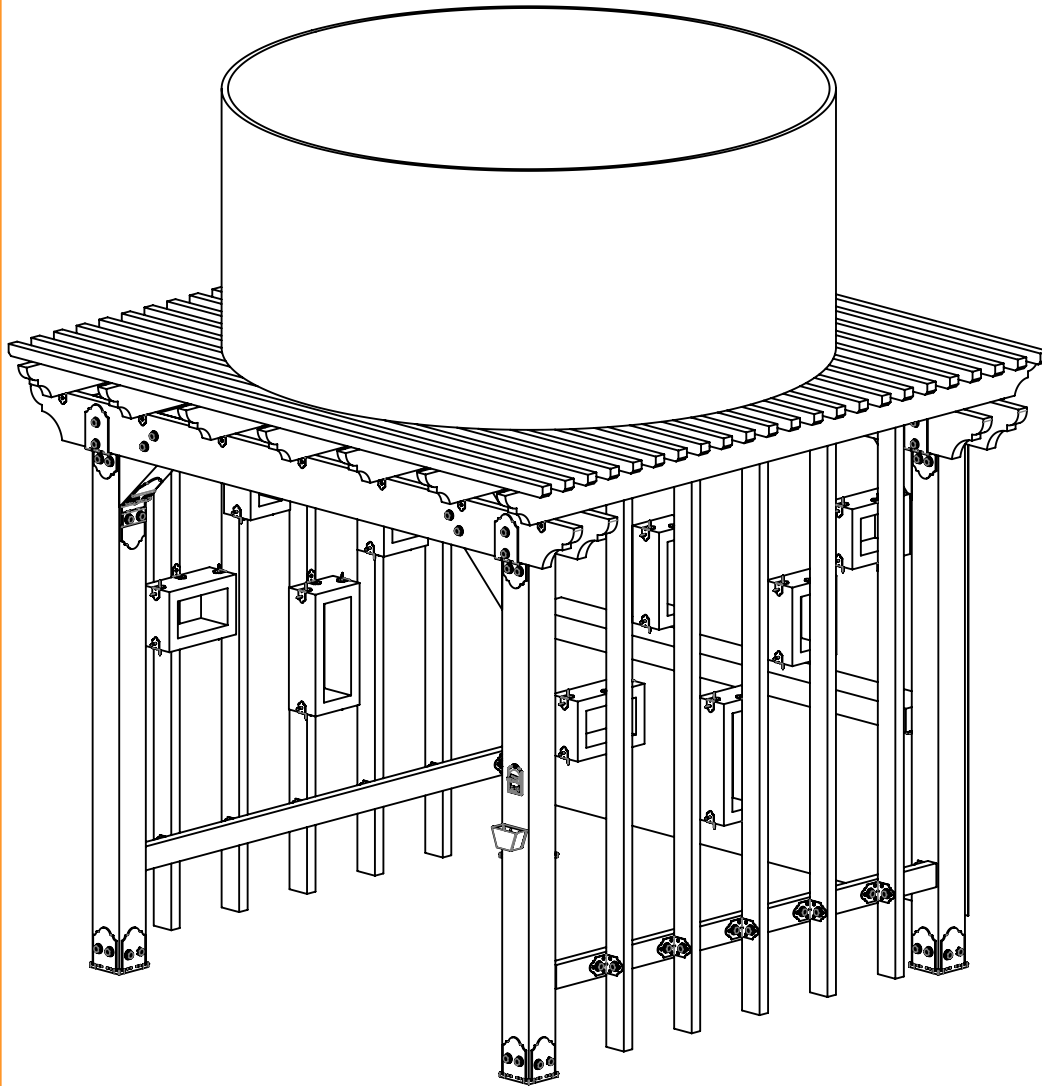
Project #331
10x10 Pergola with 6x6 Posts



Project 331 10x10 Pergola with 6x6 Posts



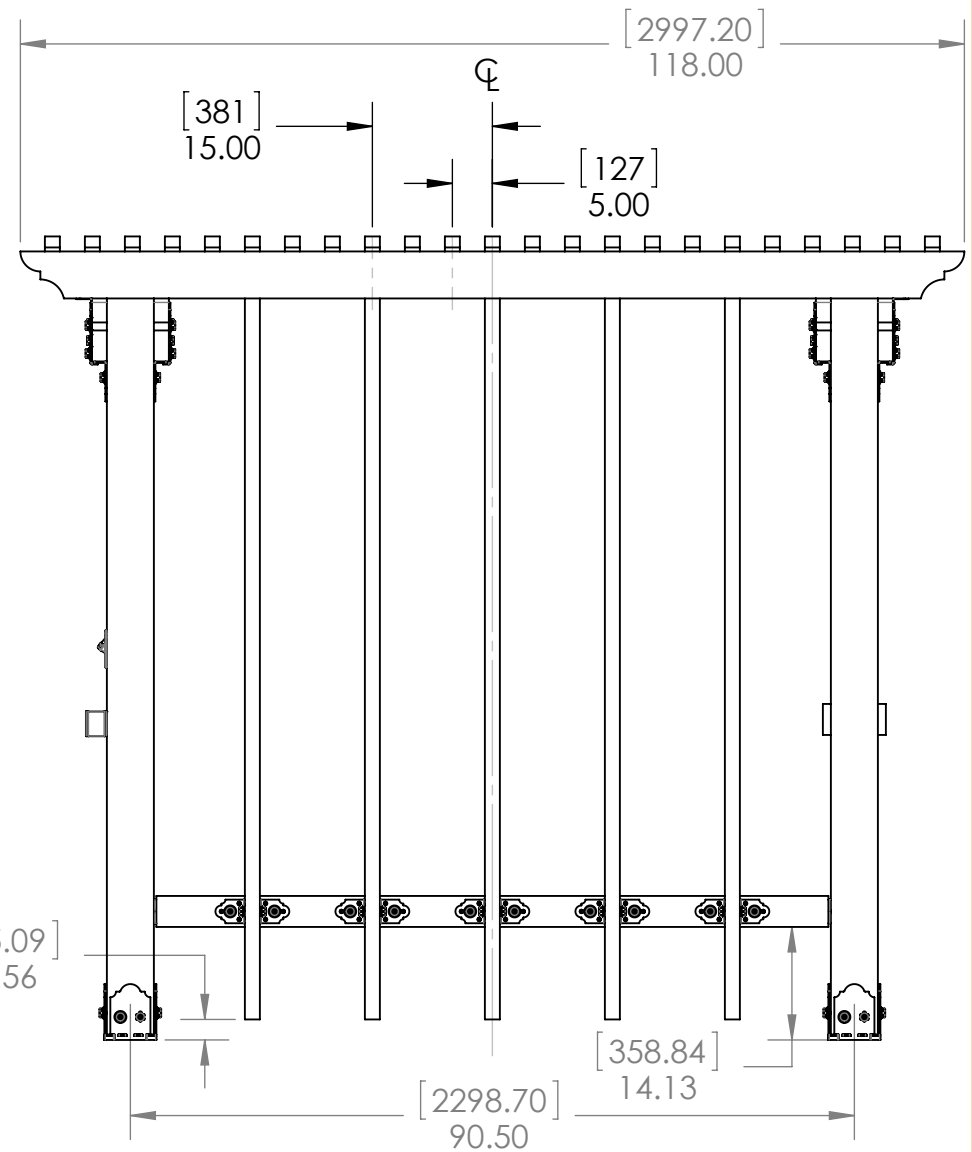
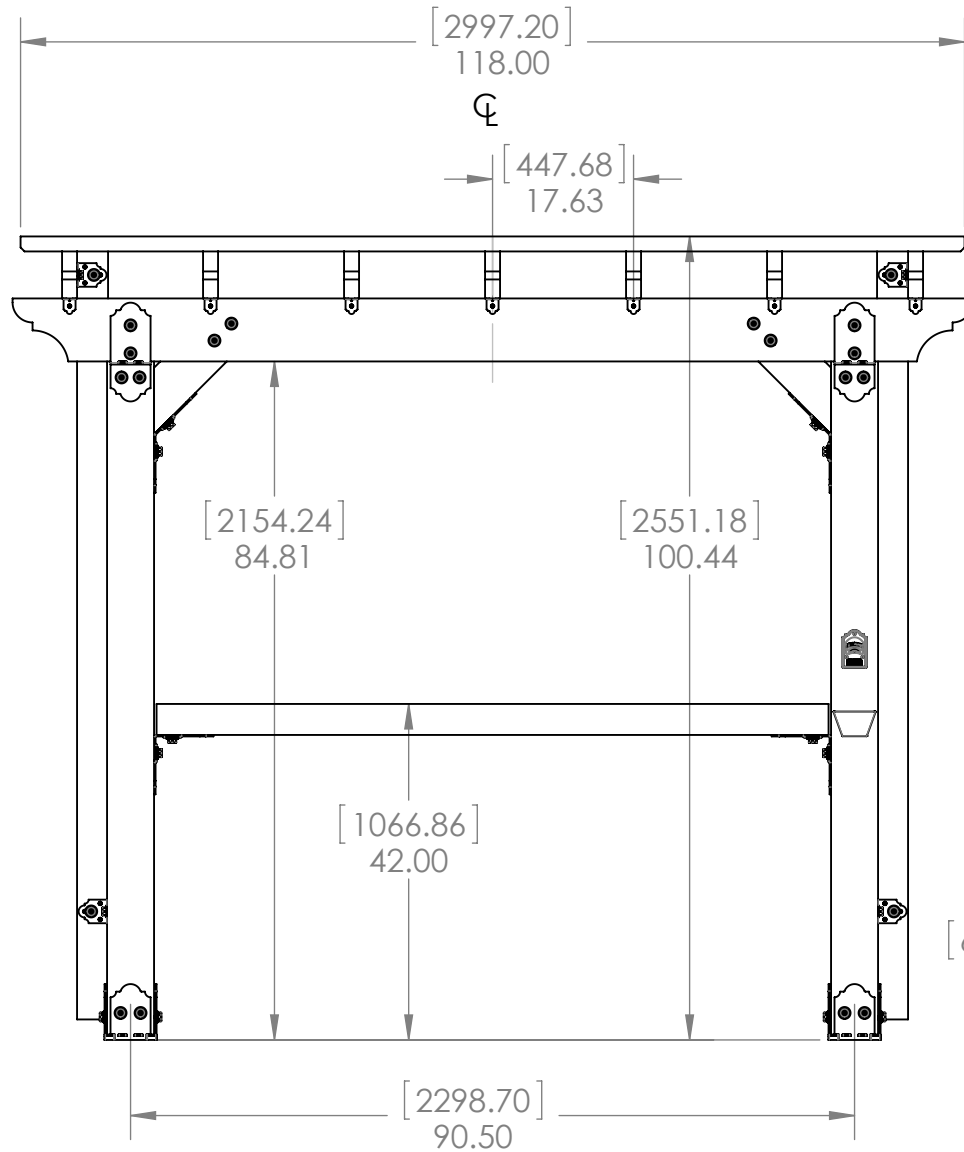
V1.00 - Installation Instructions effective May 1, 2015 and reflects information that available as of April 10, 2014. This information is updated periodically and should not be relied upon after May 1, 2015. Please visit www.OZCOBP.com to get current information



Overview

Project 331 10x10 Pergola with 6x6 Posts

V1.00 - Installation Instructions effective May 1, 2015 and reflects information that available as of April 10, 2014. This information is updated periodically and should not be relied upon after May 1, 2015. Please visit www.OZCOBP.com to get current information



Default

Project 331 10x10 Pergola with 6x6 Posts

V1.00 - Installation Instructions effective May 1, 2015 and reflects information that available as of April 10, 2014. This information is updated periodically and should not be relied upon after May 1, 2015. Please visit www.OZCOBP.com to get current information

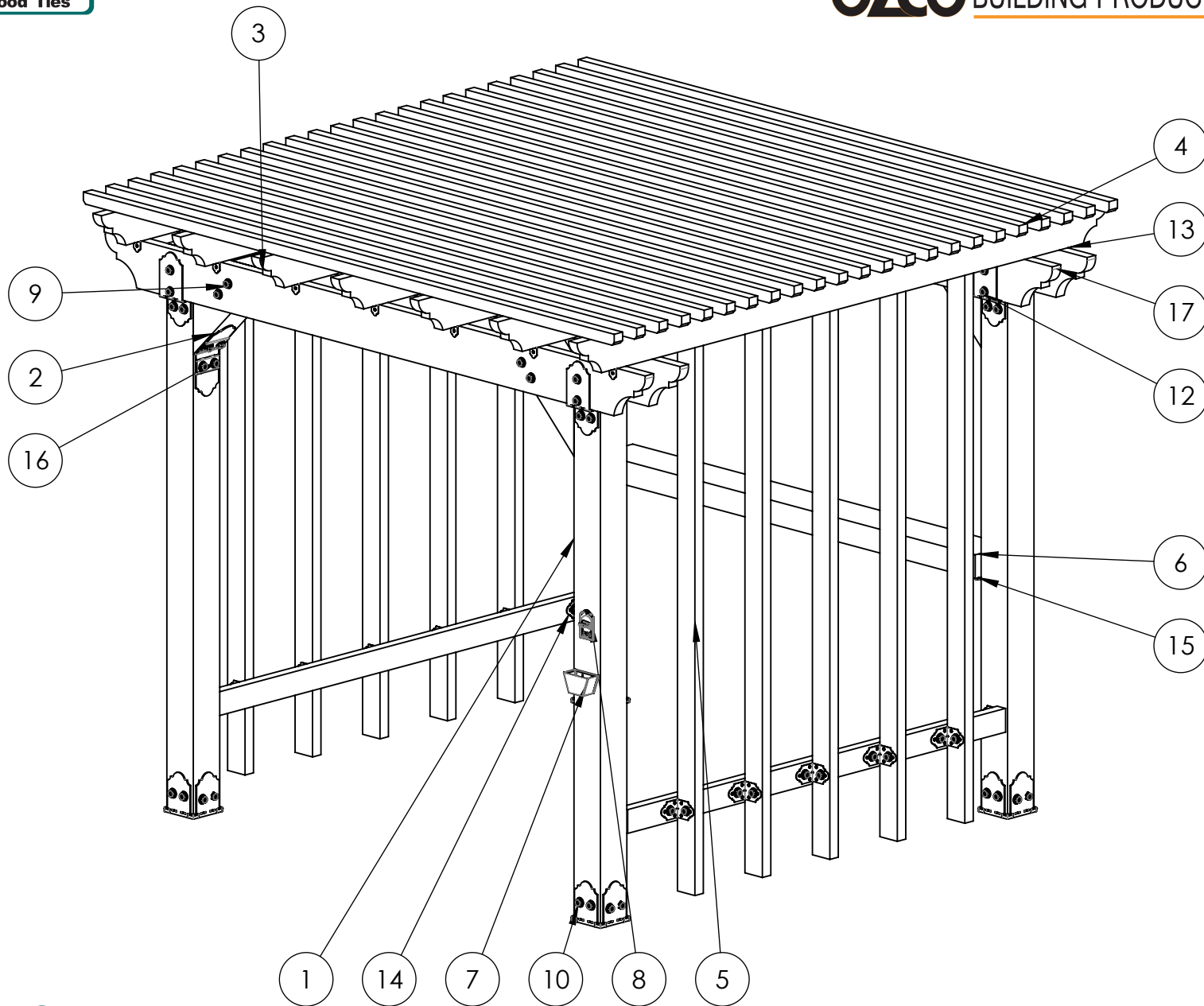
ITEM NO.	Default/default/QTY.	PART NUMBER	DESCRIPTION
1	4	6x6 Cedar Post	6x6x92.00
2	4	6x6 Cedar Post	6x6x24.00
3	7	2x6 Cedar Board	2x6x1 18.00
4	23	2x2 Cedar Board	2x2x1 18.00
5	12	2x4 Cedar Board	2x4x96.00
6	1	4x8 Cedar Board	4x6x84.00
7	1	Bottle Opener Can	Catcher, Bottle Opener
8	1	bottle opener VII	Bottle Opener
9	8	56651-10	Assembly, OWT Timber Bolt 8-10"
10	4	56608	Assembly, 6x6 Post Base
11	8	56637	Post to Beam Bolt Inline
12	8	56651	Assembly, OWT Timber Bolt 8-10"
13	14	56617	Assembly, 2" Rafter Clip
14	39	56618	4" Rafter Clip
15	2	56615	Flush Inside 90
16	4	56616	45 Flush Inside
17	4	2x8 Cedar Board	2x8x10

not shown on bill of materials
 #56621 Truss Accents
 #56622 Dome Cap Nuts
 OWT Timber Screws (for Truss Accents)

all OZCO product quantities are for each instance, not box

Bill of Material

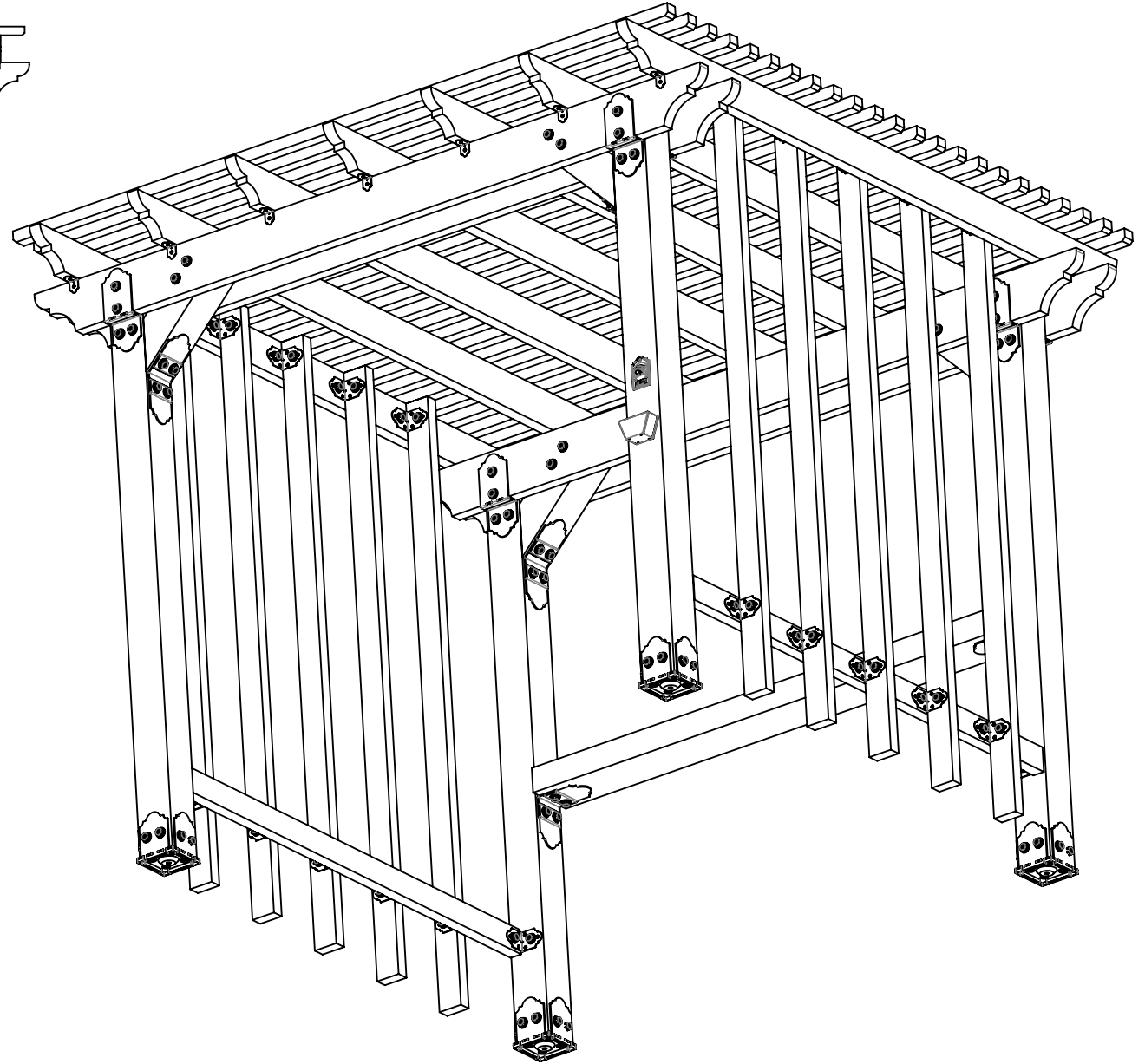
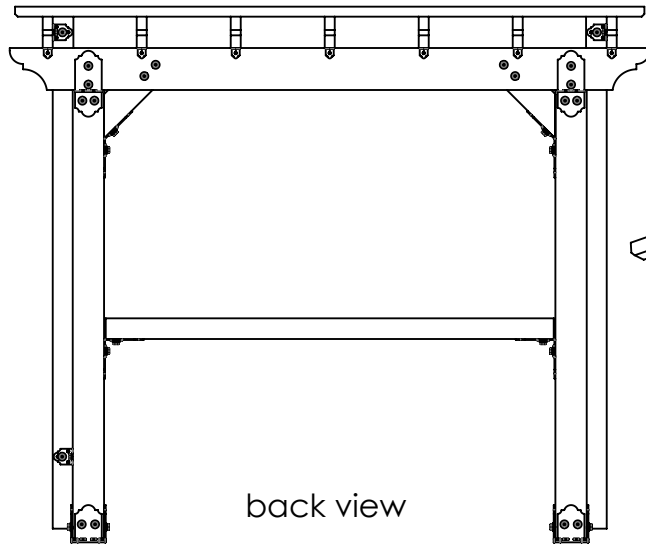
Project 331 10x10 Pergola with 6x6 Posts



Balloon Callout

Project 331 10x10 Pergola with 6x6 Posts

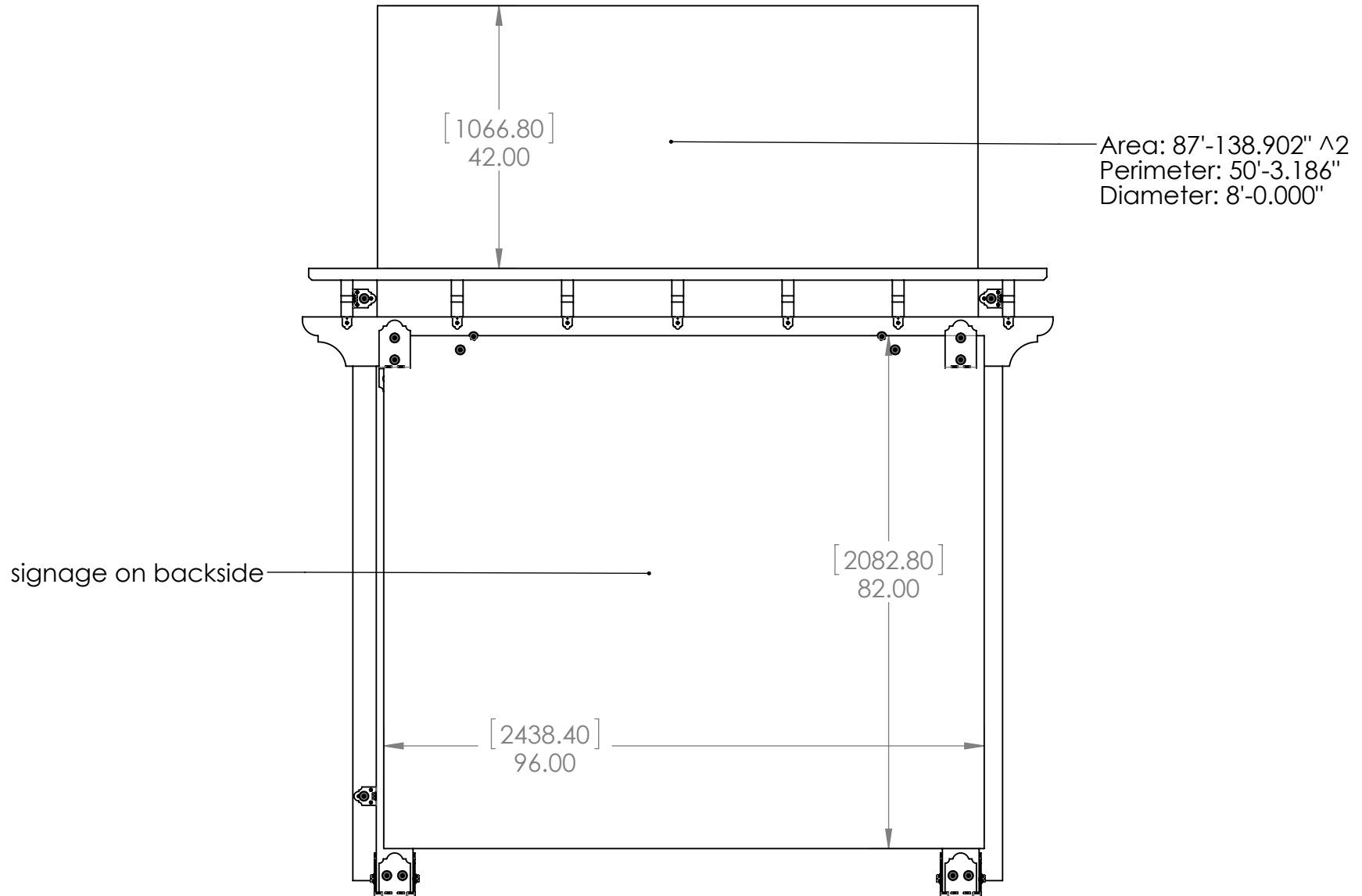
V1.00 - Installation Instructions effective May 1, 2015 and reflects information that available as of April 10, 2014. This information is updated periodically and should not be relied upon after May 1, 2015. Please visit www.OZCOBP.com to get current information



Overview

Project 331 10x10 Pergola with 6x6 Posts

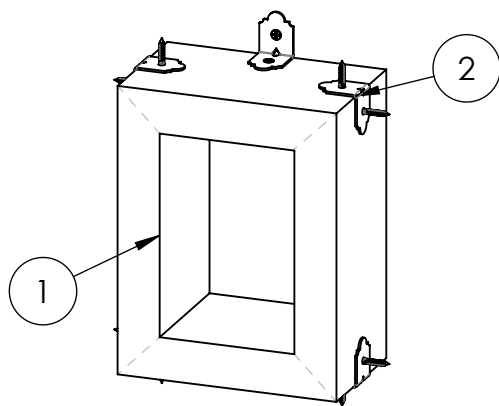
V1.00 - Installation Instructions effective May 1, 2015 and reflects information that available as of April 10, 2014. This information is updated periodically and should not be relied upon after May 1, 2015. Please visit www.OZCOBP.com to get current information



Merchandiser

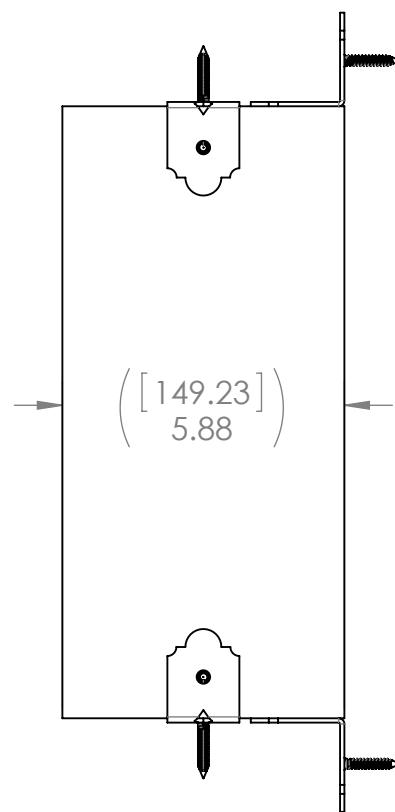
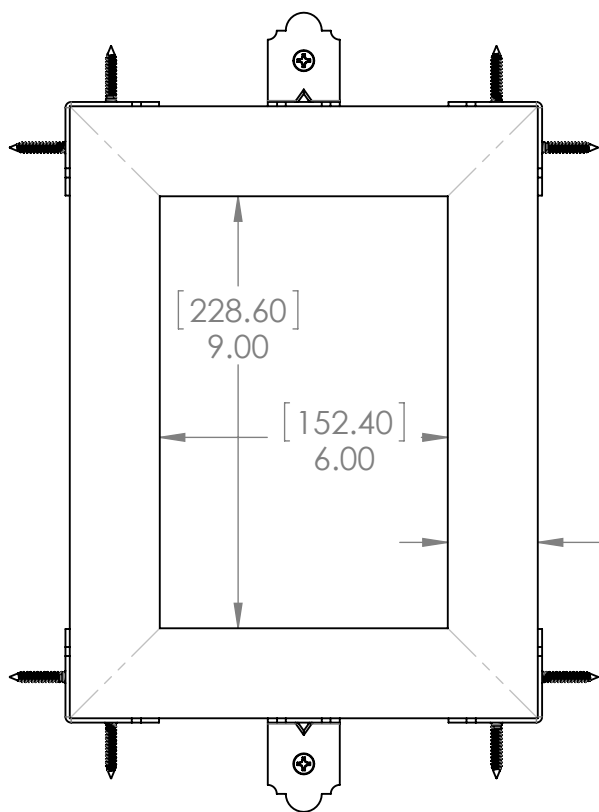
Project 331 10x10 Pergola with 6x6 Posts

V1.00 - Installation Instructions effective May 1, 2015 and reflects information that available as of April 10, 2014. This information is updated periodically and should not be relied upon after May 1, 2015. Please visit www.OZCOBP.com to get current information



ITEM NO.	6x9/QTY.	PART NUMBER	DESCRIPTION
1	1	Box, Product Display	xxx
2	6	56617	Assembly, 2" Rafter Clip

- typical shadow box utilizing 2x6 cedar
- mitered corners to utilize #56617 rafter clips
- inside dimensioned to fit boxed product



Shadow Box

Project 331 10x10 Pergola with 6x6 Posts