

THE SNUG COTTAGE DIFFERENCE!

OUR **B**LACK **P**OLYESTER **P**OWDER **C**OAT IS OVER HOT DIPPED **G**ALVANIZED (**BPPCG**). IT IS NOT OVER BARE METAL OR A FAR INFERIOR ELECTROPLATE FINISH.

DUE TO THE DIFFICULTY OF SUCCESSFULLY POWDER COATING OVER HOT DIPPED GALVANIZED PRODUCT WE USE A LOCAL MICHIGAN COMPANY FOR THIS PROCESS. WE APPLY THIS LABEL TO ALL OUR BPPCG PRODUCT.



TESTING FOR RUST RESISTANCE

Salt spray testing is the industry standard when it comes to determining a products surface coating stability and the ability to resist rusting over time. Prior to testing a deliberate scratch is made that penetrates the surface coating deep into the underlying metal substrate. Typically a sample of the product is put in a cabinet where it is sprayed with a salt water spray for many hours.

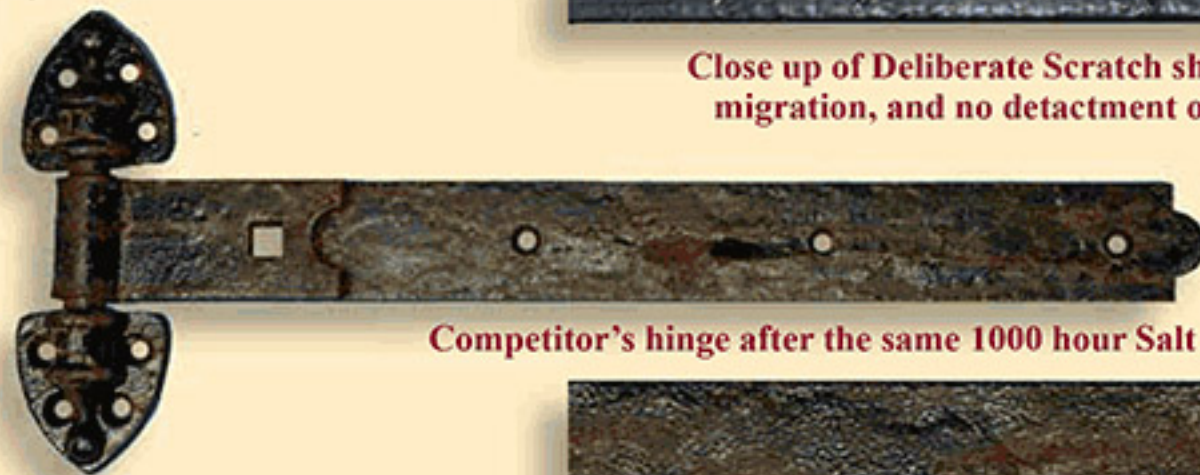
Snug Cottage Hardware routinely tests samples of our products for 1000 hours to ensure the finishes applied meet our high standard requirements. After removal from the salt spray cabinet product is examined to ensure the coatings do not flake and rust that formed at the deep scratch is confined to the scratch and does not migrate under the coatings. We will accept nothing less



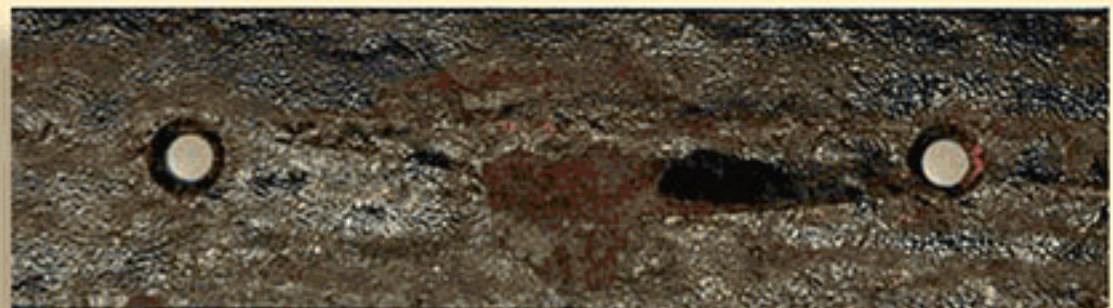
Snug Cottage Hardware hinge after 1000 hour Salt Spray Test



Close up of Deliberate Scratch shows little rust, no rust migration, and no detachment of the surface coating



Competitor's hinge after the same 1000 hour Salt Spray Test



Close up of Deliberate Scratch shows excessive rust, dramatic rust migration, and advanced detachment of the surface coating

"WHEN QUALITY COUNTS, COUNT ON SNUG COTTAGE HARDWARE"