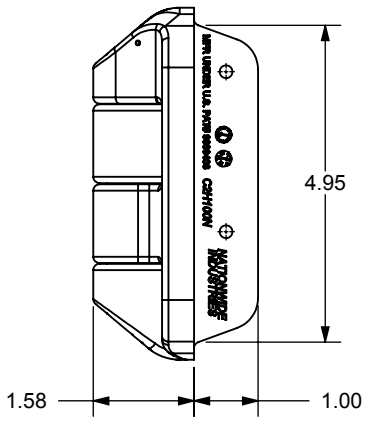
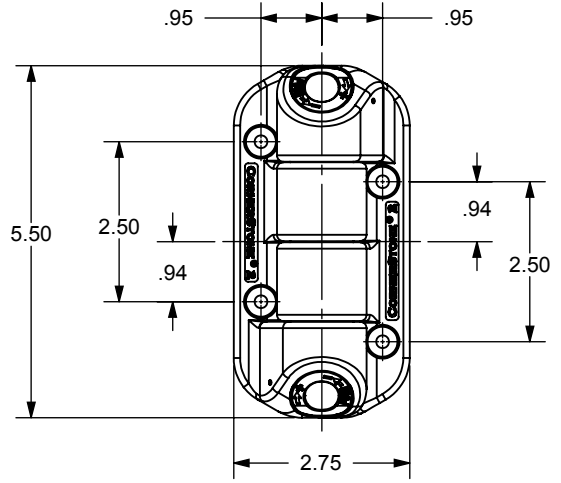
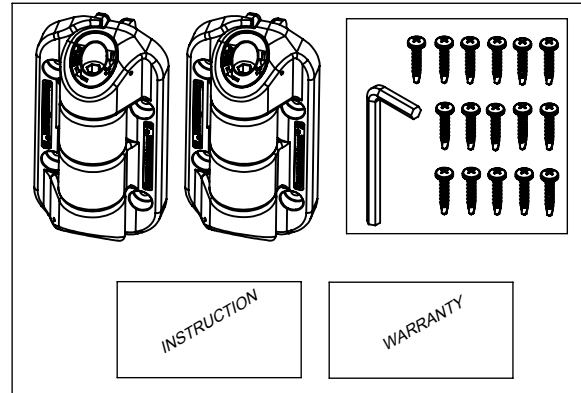
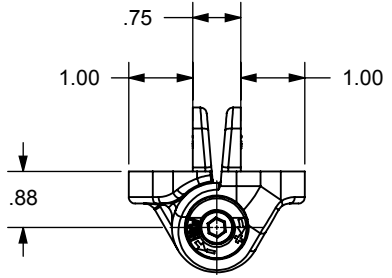
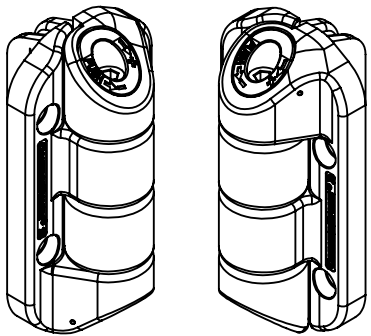
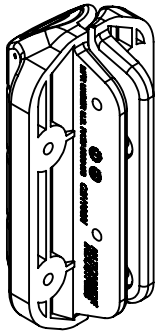


ECR/DCR		REV.	REVISIONS		DATE	APPD
			DESCRIPTION			
-	-	-	INITIAL RELEASE		8-29-16	-



PACKAGING:
 POLYBAGGED SET INCLUDES
 (2) HINGE ASSEMBLIES
 (1) POLYBAGGED SCREW PACK
 (16) #10 PAN HD SCREWS,
 SEE TABLE FOR LENGTH,
 MATERIAL AND TYPE
 (1) 1/4" HEX WRENCH
 (1) INSTRUCTION SHEET
 (1) WARRANTY SHEET

C2H100N-ZD-WH	WHITE	SELF DRILL -ZINC PLATE STEEL	1.00"
C2H100N-ZD-BK	BLACK	SELF DRILL -ZINC PLATE STEEL	1.00"
C2H100N-SD-WH	WHITE	SELF-DRILL - 18-8 SS	1.00"
C2H100N-SD-BK	BLACK	SELF-DRILL - 18-8 SS	1.00"
C2H100N-WH	WHITE	SHEET METAL - 18-8 SS	.75"
C2H100N-BK	BLACK	SHEET METAL - 18-8 SS	.75"
PART NO.	COLOR	SCREW TYPE	SCREW LENGTH

PROPRIETARY AND CONFIDENTIAL
 THE INFORMATION CONTAINED IN THIS DRAWING IS THE SOLE PROPERTY OF NATIONWIDE INDUSTRIES. ANY REPRODUCTION IN PART OR AS A WHOLE WITHOUT THE WRITTEN PERMISSION OF NATIONWIDE INDUSTRIES IS PROHIBITED.

DIMENSIONS ARE IN INCHES		NAME	DATE
TOLERANCES:		EET	8/29/16
FRACTIONAL: ±1/16"		CHECKED	
ANGULAR: MACH ±1° BEND ±1°		ENG APPR:	
TWO PLACE DECIMAL ±0.01		MFG APPR:	
THREE PLACE DECIMAL ±0.005		G.A.	
MATERIAL		COMMENTS:	
30% GF NYLON 6/6			
FINISH			
DO NOT SCALE DRAWING			

NATIONWIDE INDUSTRIES

**CORNERSTONE 2
1" HINGE**

SIZE: **A** DWG. NO. **CS--C2H100N** REV. **-**
 SCALE: 1:1 WEIGHT: SHEET 1 OF 1