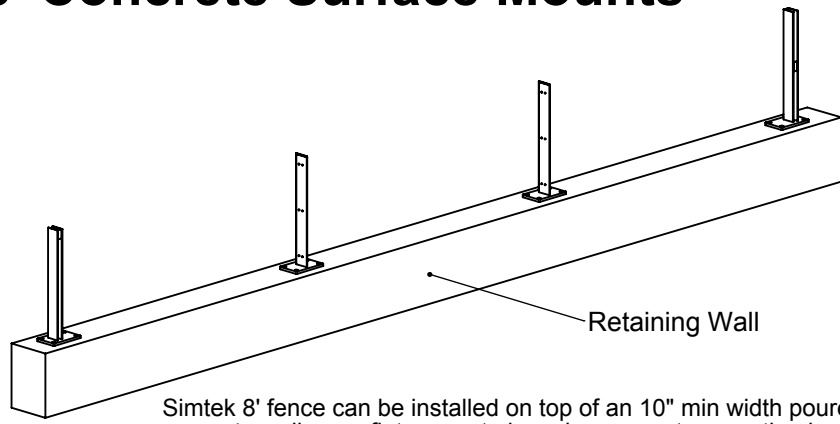
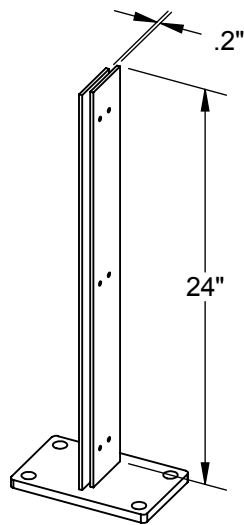
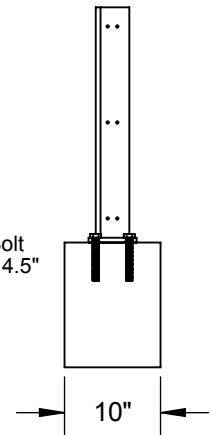


# 8' Concrete Surface Mounts

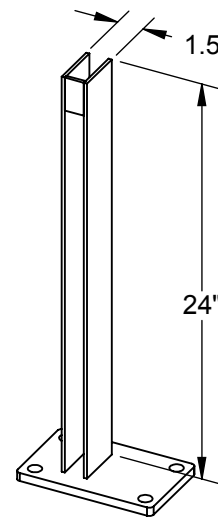


Simtek 8' fence can be installed on top of an 10" min width poured concrete wall or on flat concrete by using concrete mounting brackets.

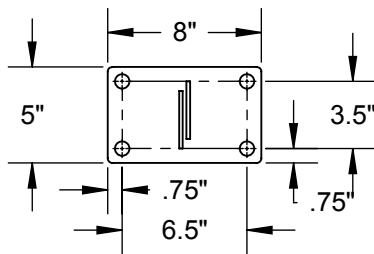
Minimum Bolt Size 1/2" x 4.5"



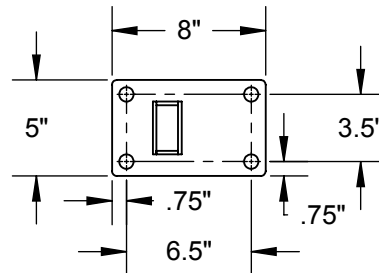
Line Mount



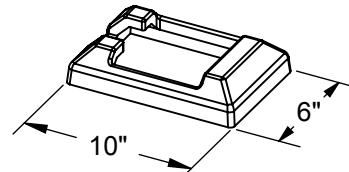
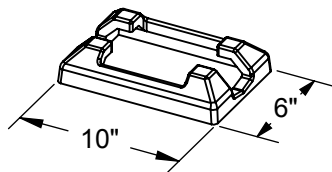
End Mount



Line Shoe Skirt



End Shoe Skirt



**Surface Mount Specs**

This drawing may not be altered or reproduced without the permission of SimTek® Fence

Date: Oct 15, 2013

Scale: not to scale

REV: D Barlocker

Sheet 1 of 1

U.S. Patents: 7,478,797 / 7,635,114 Foreign Patents Pending

