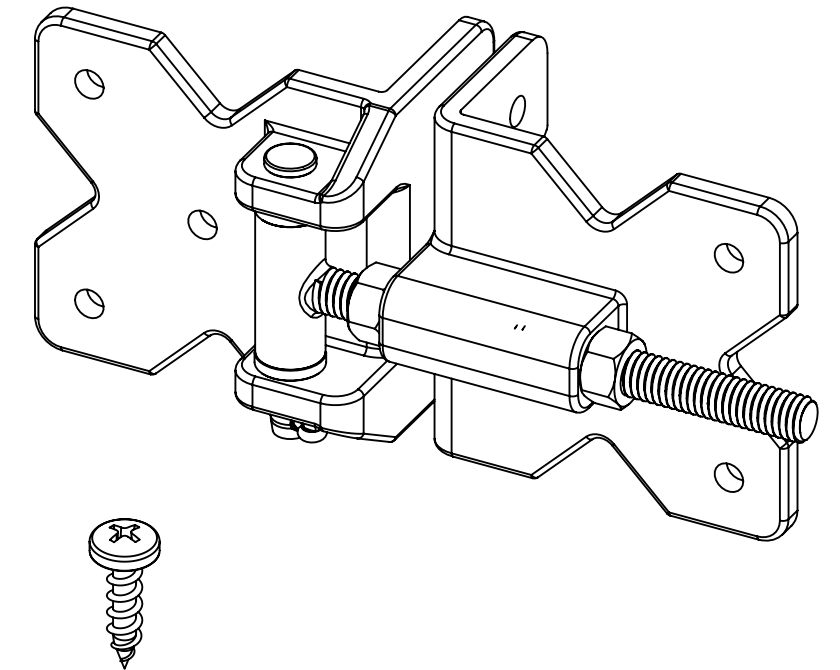
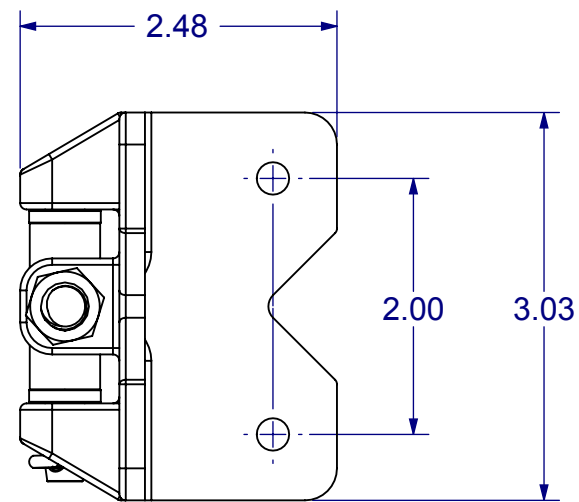
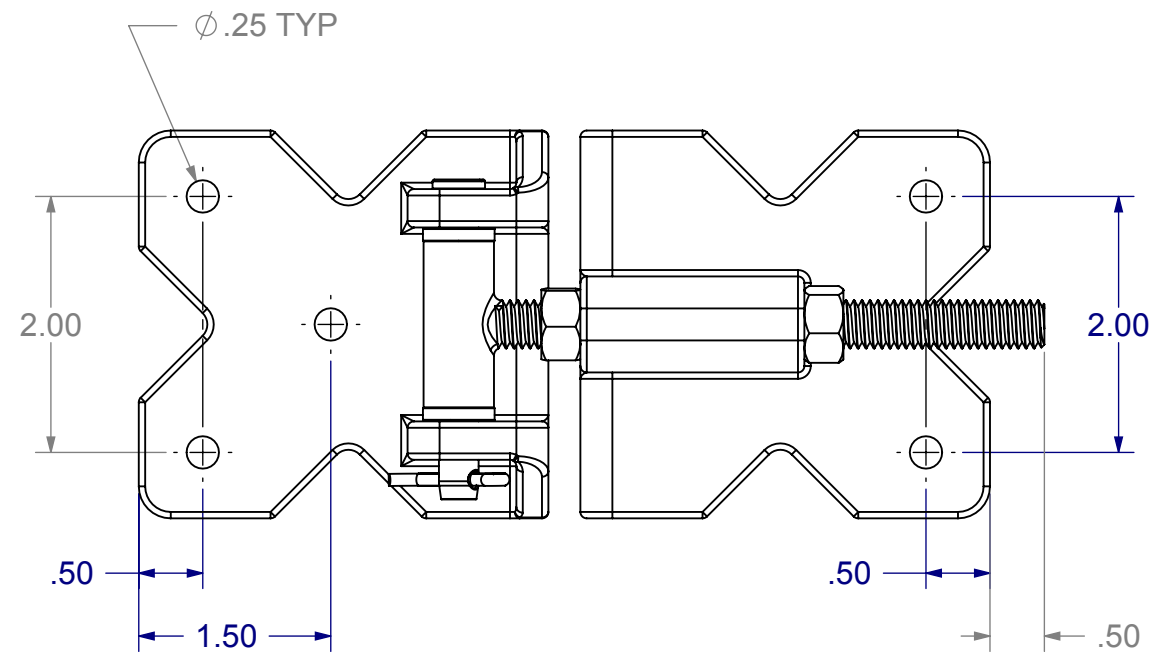
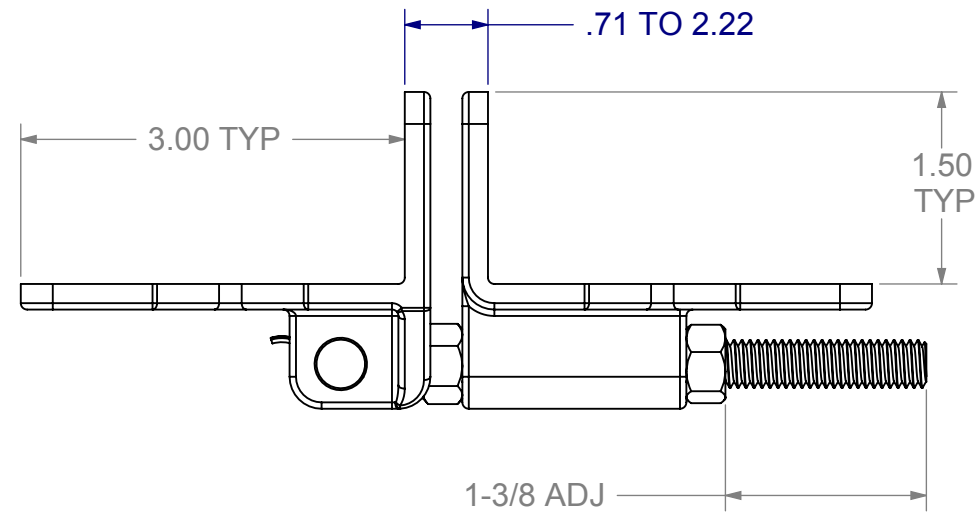


| PART NO. | COLOR | L* | a* | b* | G* |
|----------|-------|------|------|-----|----|
| HBH1-SSB | BLACK | 24 | 0 | 0 | 35 |
| HBH1-SSW | WHITE | 94.5 | -1.4 | 1.5 | 80 |

| ECR/DCR REV. | | REVISIONS DESCRIPTION | DATE | APPD |
|--------------|---|-----------------------|---------|------|
| - | - | INITIAL RELEASE | 5-23-13 | - |



PACKAGING INSTRUCTIONS

EACH SET TO CONTAIN:

- (2) HINGE ASSEMBLIES INDIVIDUALLY POLYBAGGED.
- HARDWARE POLYBAGGED:
(18) #14 x 3/4" LG. PHILLIPS PAN HEAD, 316 SS

NOTES:

- PART TO HAVE A NON-ABRASIVE FINISH.
- PART TO HAVE MIN. DRAFT ANGLE AS TOOLING REQUIRES.
- ANY AND ALL CHANGES TO MATERIAL OR FINISH MUST BE APPROVED BY NWI.
- ALL DIAMETERS TO BE CONCENTRIC WITHIN .005 UNLESS OTHERWISE SPECIFIED.
- ALL CORNERS TO BE .015 MAX R OR CHAMFER OR OTHERWISE NOTED.
- ALL DIMENSIONS ARE FINISHED PART DIMENSIONS.
- POWDERCOAT FINISH TO BE INTERPON 600 OR NWI APPROVED EQUIVALENT.

DIMENSIONS ARE IN INCHES
TOLERANCES:
FRACTIONAL ±1/16"
ANGULAR: MACH ±1° BEND ±1°
TWO PLACE DECIMAL ±0.01
THREE PLACE DECIMAL ±0.005

| | NAME | DATE |
|-----------|------|----------|
| DRAWN | EET | 05-23-13 |
| CHECKED | - | - |
| ENG APPR. | - | - |
| MFG APPR. | - | - |
| Q.A. | - | - |



HYBRID NON SELF CLOSING HINGE

PROPRIETARY AND CONFIDENTIAL
THE INFORMATION CONTAINED IN THIS DRAWING IS THE SOLE PROPERTY OF NATIONWIDE INDUSTRIES. ANY REPRODUCTION IN PART OR AS A WHOLE WITHOUT THE WRITTEN PERMISSION OF NATIONWIDE INDUSTRIES IS PROHIBITED.

| MATERIAL | FINISH | APPLICATION |
|--------------------------|-------------|----------------------|
| 30%GF NYLON 6/6 304SS | POWDER COAT | DO NOT SCALE DRAWING |

COMMENTS:
BASED ON DWG. QD-0246

| SIZE | DWG. NO. | REV. |
|------|----------|------|
| B | CS--HBH1 | - |