

Keystone® PanicLatch™

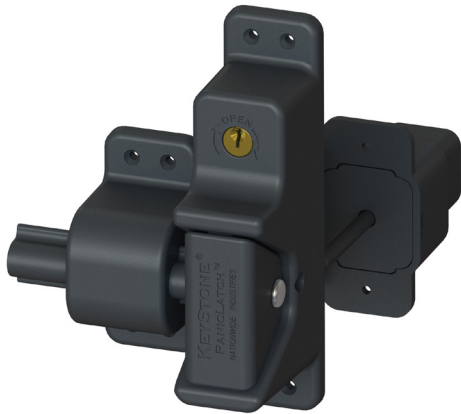
REPLACES PANIC BAR APPLICATIONS

Patented

Keystone® PanicLatch™
KPL-P2-BK

Keystone® PanicLatch™ Round Post Adaptor Only
KPL-RPA-BK

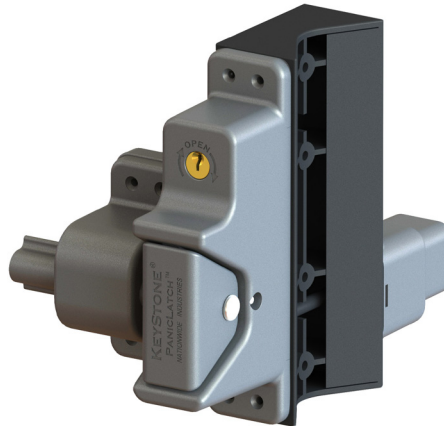
Front



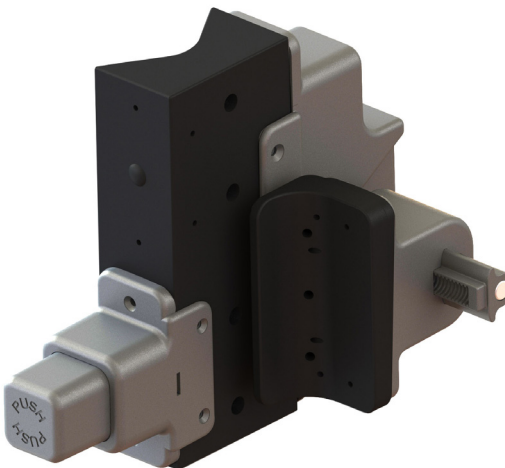
Back



Front



Back



Color difference applied to show
round post adaptor - part is black.

KEYSTONE® SELF-LOCKING PANICLATCH™ FEATURES



Heavy duty
commercial design



Anti-tamper
design



Secure Entry
with 6 pin key



Easy exit with
large button

KEYSTONE® SELF-LOCKING PANICLATCH™

Part Number	Color	Description	Box Count
KPL-P2-BK	Black	Keystone® Self-Locking Paniclatch™, Black	6(EA)
KPL-RPA-BK	Black	Designed to work on 2" to 6-5/8" on the latch side (post) and 1-3/8" to 2" on the keeper side (gate). Keystone® Self-Locking Paniclatch™ sold separately (<i>adapter only</i>).	6(EA)

White available through special order. Contact us for more information.

Meets Egress codes and specs | Check with your local codes to meet requirements