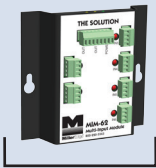


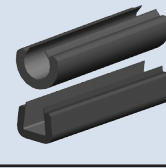
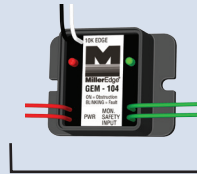
### 2016 GATE COLLECTION



**OPERATOR ACCESSORIES**



**REFLECTIVE & THRU-BEAM PHOTO EYES**



**EDGES & EDGE ACCESSORIES**



Featuring 2016 UL 325 approved components designed for use with gate operators manufactured after January 12, 2016, follow this simple guide to determine which devices are suggested for your next gate installation.

**Effective January 12, 2016, UL 325 compliance requires:**

- A minimum of **2 independent forms** of entrapment protection per entrapment zone
- External contact and non-contact sensor devices are **required to be monitored**

Please visit [www.dasma.org](http://www.dasma.org) for more information about the 2016 UL 325 safety standard.

### OPERATOR ACCESSORIES

Does the gate operator have inherent entrapment protection?

Yes

At least 1 external monitored device is required (possibly more) per entrapment zone

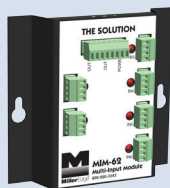
No

At least 2 external monitored devices are required (possibly more) per entrapment zone

Does the gate installation require more devices than the gate operator has inputs for?

Yes

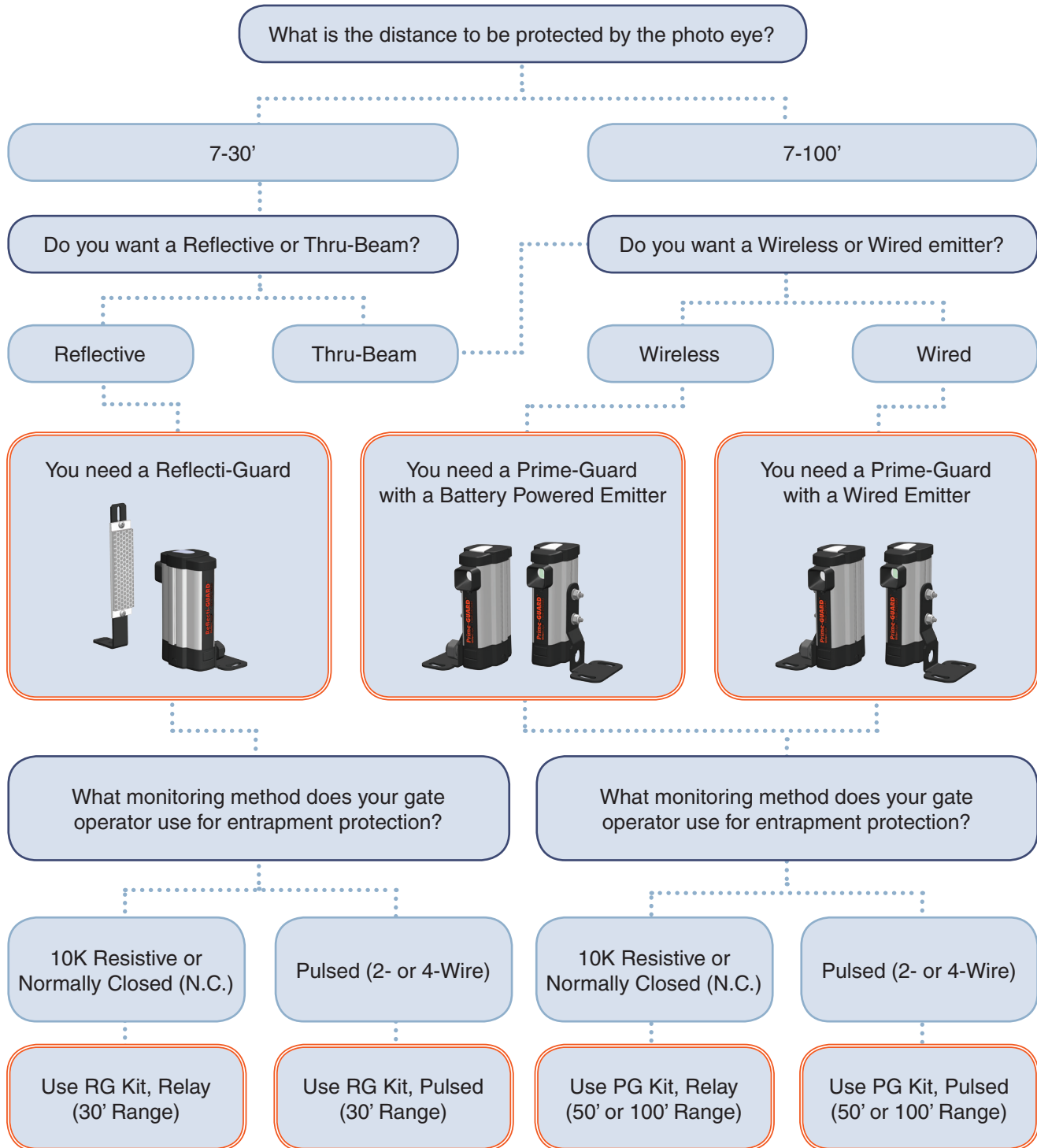
You need "The Solution" Multi-Input Module (MIM-62)



No

You are ready to install

### REFLECTIVE & THRU-BEAM PHOTO EYES

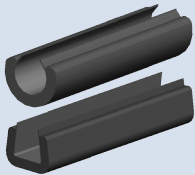


### SENSING EDGE ACCESSORIES

What monitoring method does your gate operator use for entrapment protection?

10K Resistive

You are ready to install 10K Resistive Sensing Edge(s) (T2)



2-Wire Pulsed

Use GEM-102 to convert 10K Resistive Sensing Edge signal



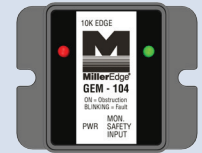
4-Wire Pulsed

Use GEM-103 to convert 10K Resistive Sensing Edge signal



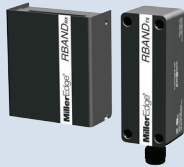
Normally Closed (N.C.)

Use GEM-104 to convert 10K Resistive Sensing Edge signal

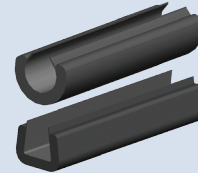


Does the Sensing Edge need to be wireless?

Yes  
You need RBand (RB-G-K10)

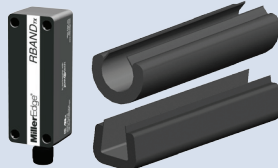


No  
You are ready to install your 10K Resistive Sensing Edge(s) (T2)

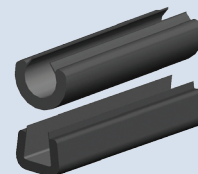


Do you have 2 Sensing Edges that could benefit from being wireless?  
(example: leading and trailing edges)

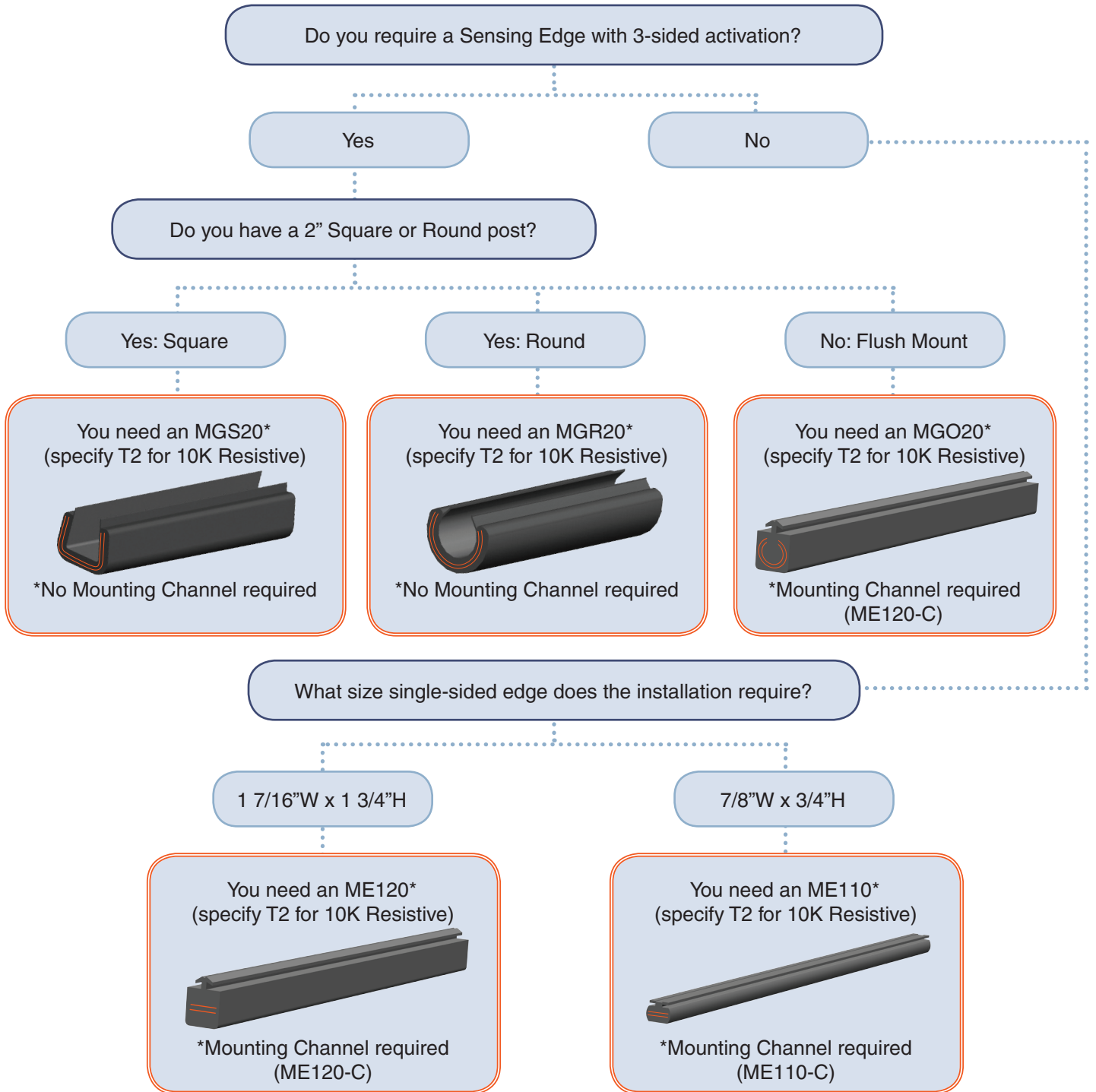
Yes  
You need an additional RBand Transmitter (RB-G-K10); You are now ready to install your 10K Resistive Sensing Edges (T2)



No  
You are ready to install your 10K Resistive Sensing Edge(s) (T2)



### SENSING EDGES\*



\* Basic Monitored Gate Sensing Edge selection shown. For a complete catalog of Sensing Edge and Mounting Channel models and ordering options, please visit [www.milleredge.com](http://www.milleredge.com).