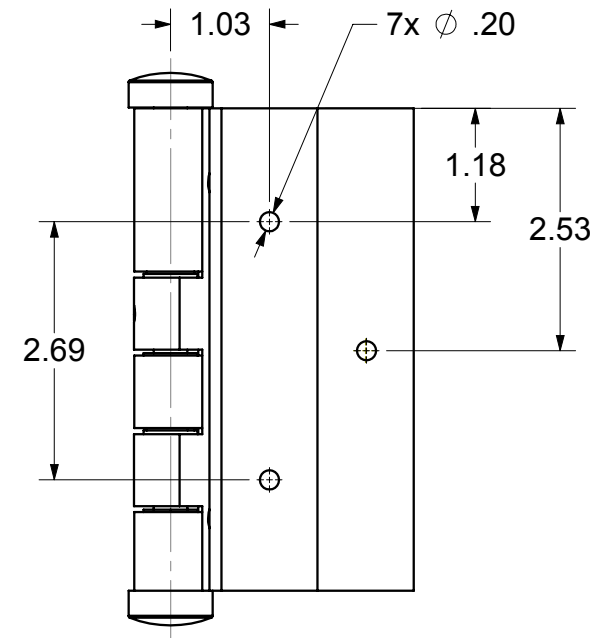
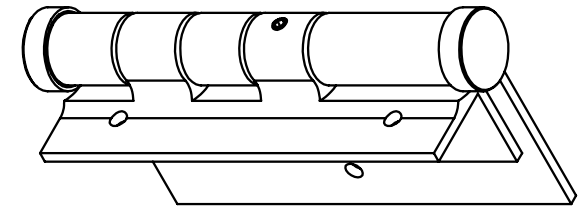
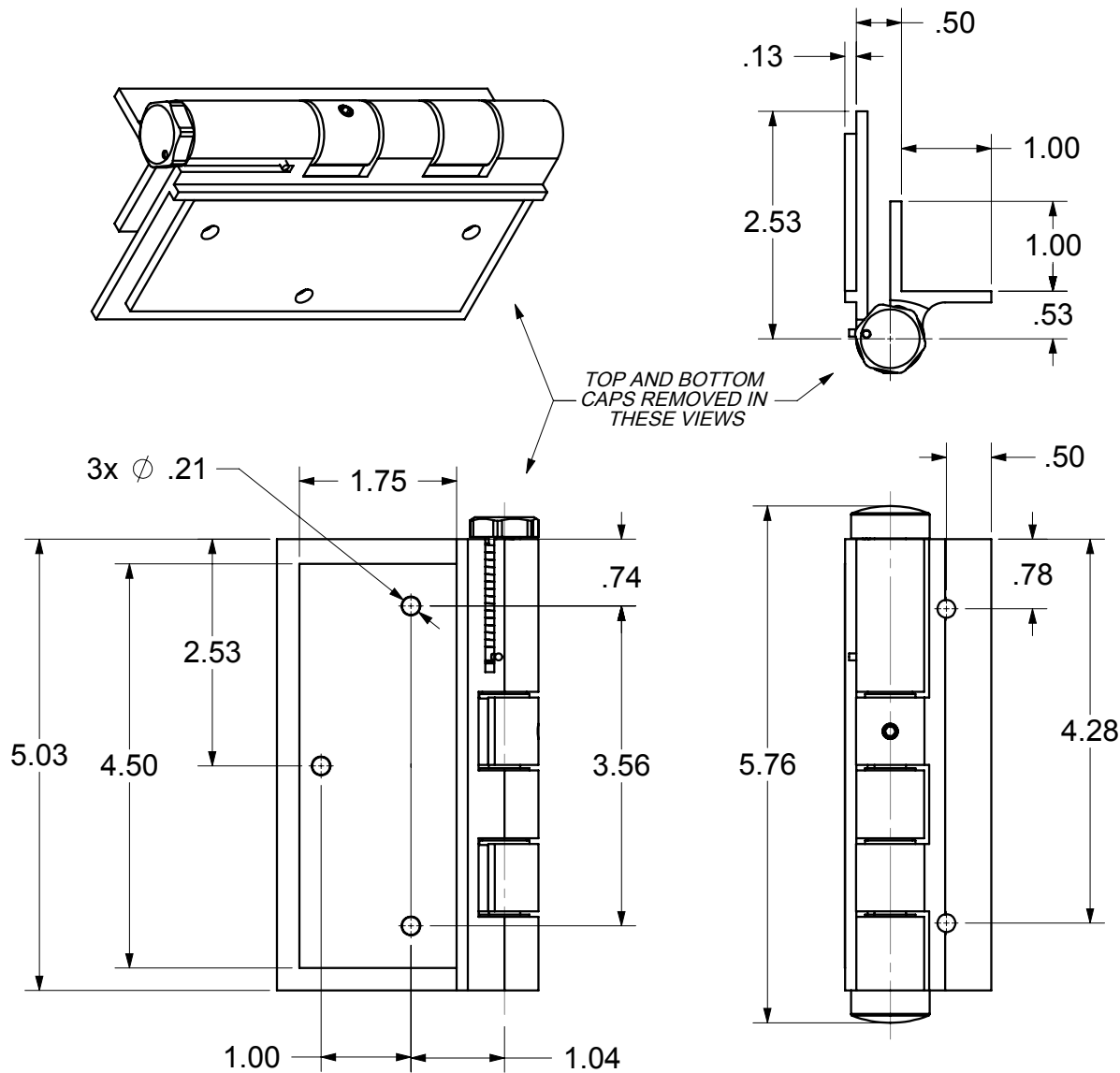


ECR/DCR	REV.	REVISIONS		DATE	APPD
		DESCRIPTION			
-	-	INITIAL RELEASE		01-21-10	-
-	1	CHANGED BOX QTY FROM 100 TO 50		09-22-10	CGS
ECR-0729	2	REVISED MTG HOLE LOCATIONS & SIZES PER CUSTOMER REQUEST		09-11-14	CGS



PACKAGING INSTRUCTIONS:

- 1) ACCESSORY KIT INCLUDES: 3/32 HEX KEY, TOP CAP, AND BOTTOM CAP, POLYBAGGED.
- 2) (1) POLYBAGGED SET INCLUDES: (1) HINGE, (1) SPACER, (1) ACCESSORY KIT, AND (1) FOLDED INSTRUCTION SHEET
- 3) PACK (50) SETS PER BOX



DIMENSIONS ARE IN INCHES
TOLERANCES:
FRACTIONAL $\pm 1/16$ "
ANGULAR: MACH $\pm 1^\circ$ BEND $\pm 1^\circ$
TWO PLACE DECIMAL ± 0.01
THREE PLACE DECIMAL ± 0.005

PROPRIETARY AND CONFIDENTIAL
THE INFORMATION CONTAINED IN THIS
DRAWING IS THE SOLE PROPERTY OF
NATIONWIDE INDUSTRIES. ANY
REPRODUCTION IN PART OR AS A WHOLE
WITHOUT THE WRITTEN PERMISSION OF
NATIONWIDE INDUSTRIES IS PROHIBITED.



5" SELF CLOSING HINGE

SIZE: A DWG. NO. CS-NW093J REV. 2
SCALE: 1:2 WEIGHT: SHEET 1 OF 1