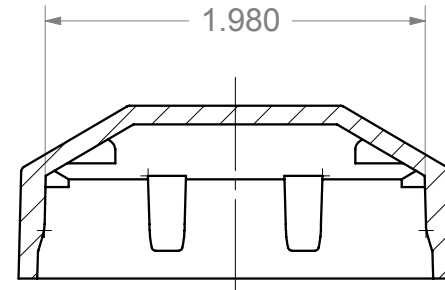
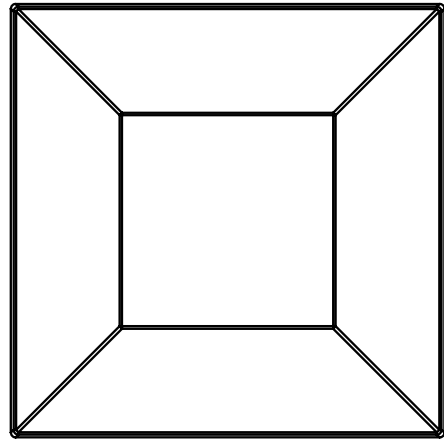
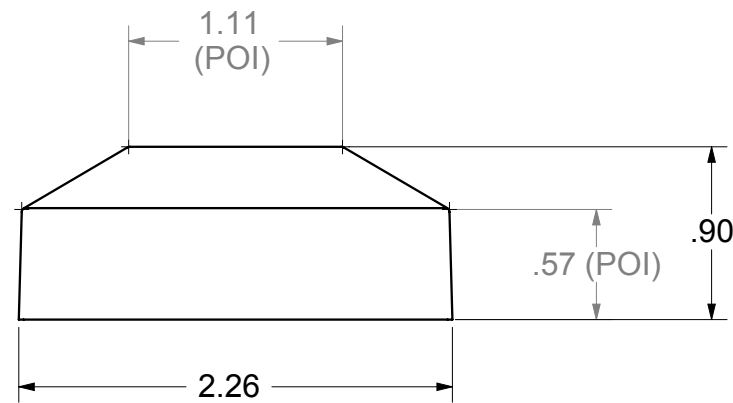
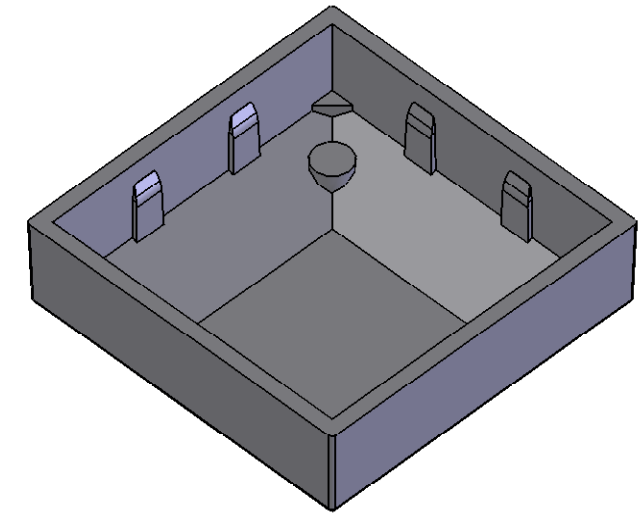


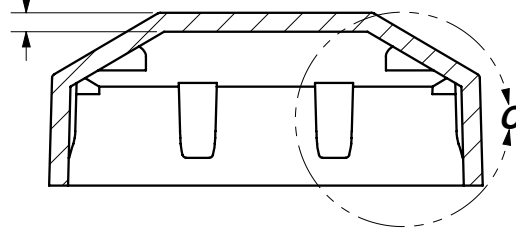
ECR/DCR REV.		REVISIONS DESCRIPTION	DATE	APPD
-	-	INITIAL RELEASE	02-02-09	-



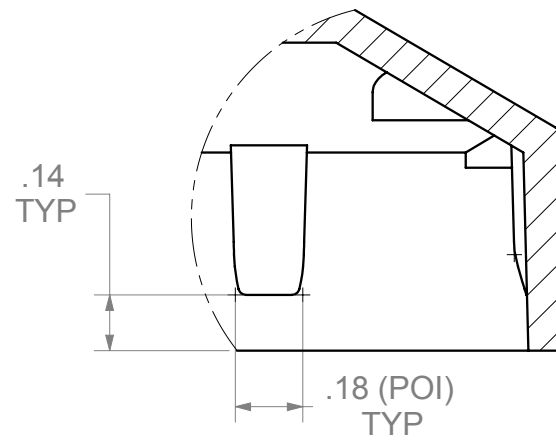
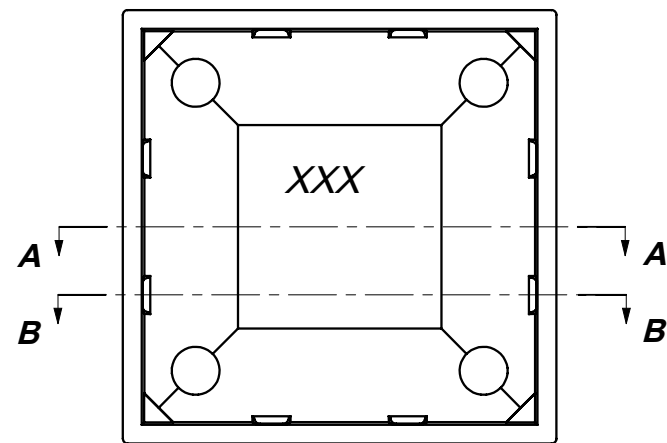
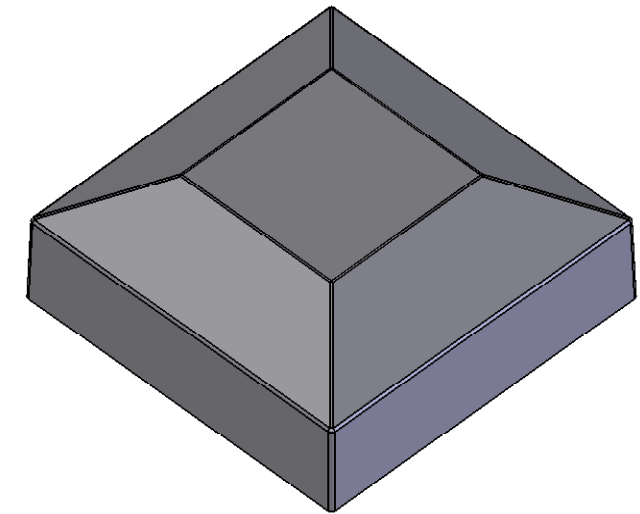
**SECTION B-B**



.098 TYP WALL THICKNESS



**SECTION A-A**



**DETAIL C**

NW230NL-56	WHITE	94.5	-1.4	1.5	80
NW230NL-36	BRONZE	34	.53	2.1	15
NW230NL-26	BLACK	24	0	0	35
NW230NL-SBL	MILL	na	na	na	na
<b>PART #</b>	<b>COLOR</b>	<b>L</b>	<b>a</b>	<b>b</b>	<b>G</b>

**NOTES:**

- PART TO HAVE A NON-ABRASIVE FINISH.
- PART TO HAVE MIN. DRAFT ANGLE AS TOOLING REQUIRES.
- MATERIAL: A360 CAST ALUMINUM
- ALL DIAMETERS TO BE CONCENTRIC WITHIN .005 UNLESS OTHERWISE SPECIFIED.
- ALL CORNERS TO BE .015 MAX R OR CHAMFER OR OTHERWISE NOTED.
- ALL DIMENSIONS ARE FINISHED PART DIMENSIONS.
- POWDERCOAT: INTERPON 600 OR NWI APPROVED EQUIVALENT

DIMENSIONS ARE IN INCHES  
TOLERANCES:  
FRACTIONAL ±1/16"  
ANGULAR: MACH ±1° BEND ±1°  
TWO PLACE DECIMAL ±0.01  
THREE PLACE DECIMAL ±0.005

**PROPRIETARY AND CONFIDENTIAL**  
THE INFORMATION CONTAINED IN THIS DRAWING IS THE SOLE PROPERTY OF NATIONWIDE INDUSTRIES. ANY REPRODUCTION IN PART OR AS A WHOLE WITHOUT THE WRITTEN PERMISSION OF NATIONWIDE INDUSTRIES IS PROHIBITED.



**2" PRESS-FIT POST CAP**

SIZE <b>B</b>	DWG. NO. <b>CS--NW230NL</b>	REV. <b>--</b>
SCALE:1:1	WEIGHT:	SHEET 1 OF 1

**DRAFT COPY**