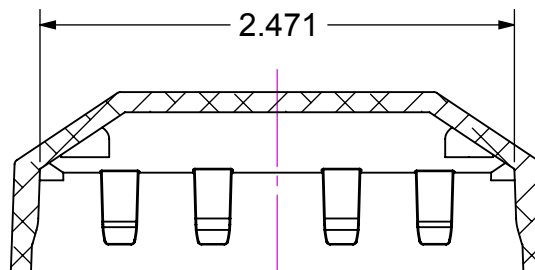
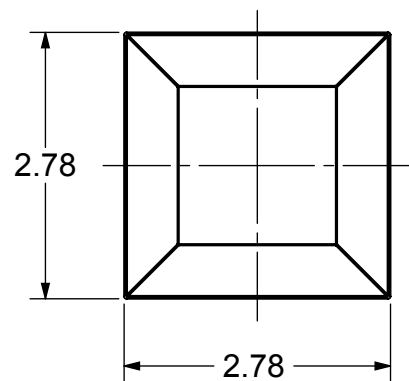
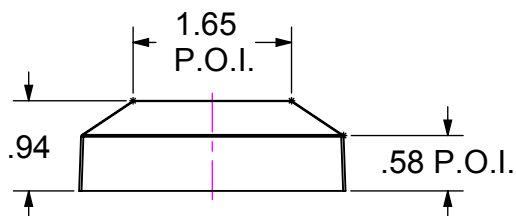
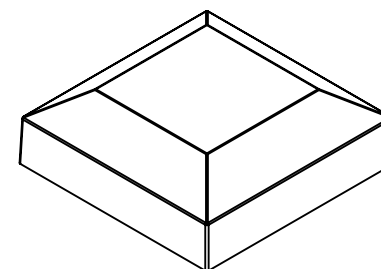


PART #	COLOR	L*	a*	b*	G*
NW240NL-SBL	MILL	-	-	-	-
NW240NL-26	BLACK	24	0	0	35
NW240NL-56	WHITE	95	-1.4	1.5	80
NW240NL-36	BRONZE	34	0.5	2.1	15
NW240NL-BZ2	BRONZE 2	36	0.7	3.5	58

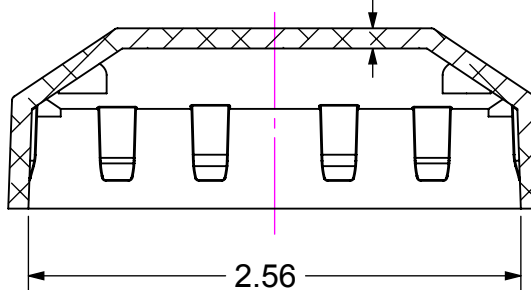
REVISIONS				
ECR/DCR	REV.	DESCRIPTION	DATE	APPD
-	-	INITIAL RELEASE	1/25/13	EET



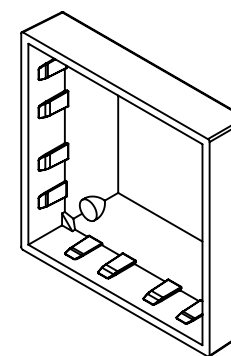
SECTION B-B
SCALE 1 : 1



.105 TYP WALL THICKNESS



SECTION A-A
SCALE 1 : 1



NOTES:

- PART TO HAVE A NON-ABRASIVE FINISH.
- PART TO HAVE MIN. DRAFT ANGLE AS TOOLING REQUIRES.
- MATERIAL: A360 CAST ALUMINUM
- ALL DIAMETERS TO BE CONCENTRIC WITHIN .005 UNLESS OTHERWISE SPECIFIED.
- ALL CORNERS TO BE .015 MAX R OR CHAMFER OR OTHERWISE NOTED.
- ALL DIMENSIONS ARE FINISHED PART DIMENSIONS.
- POWDERCOAT: INTERPON 600 OR NWI APPROVED EQUIVALENT

DIMENSIONS ARE IN INCHES
TOLERANCES:
FRACTIONAL $\pm 1/16"$
ANGULAR: MACH $\pm 1^\circ$ BEND $\pm 1^\circ$
TWO PLACE DECIMAL ± 0.01
THREE PLACE DECIMAL ± 0.005



**2.5" POST CAP
PRESS FIT**

PROPRIETARY AND CONFIDENTIAL
THE INFORMATION CONTAINED IN THIS DRAWING IS THE SOLE PROPERTY OF NATIONWIDE INDUSTRIES. ANY REPRODUCTION IN PART OR AS A WHOLE WITHOUT THE WRITTEN PERMISSION OF NATIONWIDE INDUSTRIES IS PROHIBITED.

SIZE A	DWG. NO. CS--NW240NL	REV. -
SCALE: 1:2	WEIGHT:	SHEET 1 OF 1