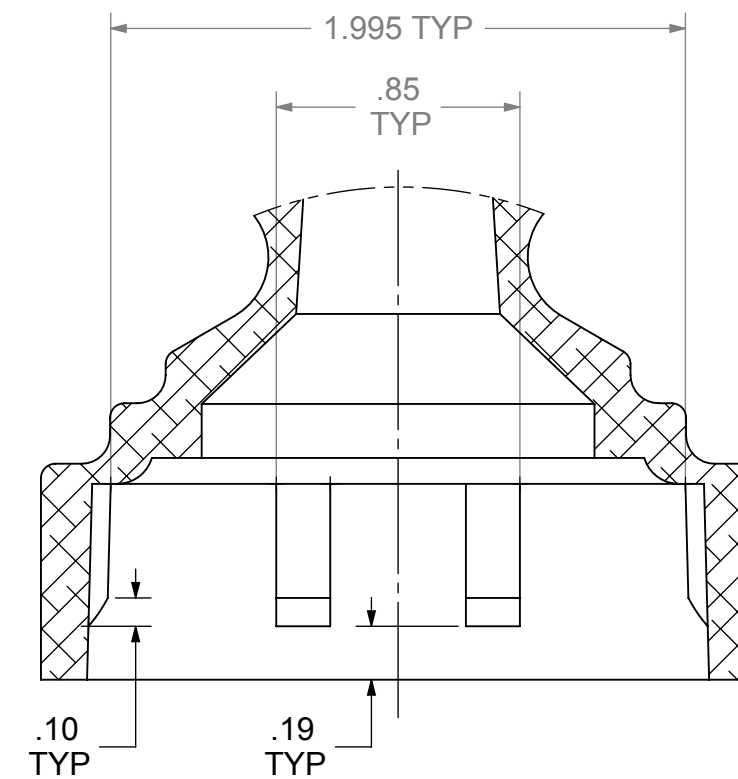
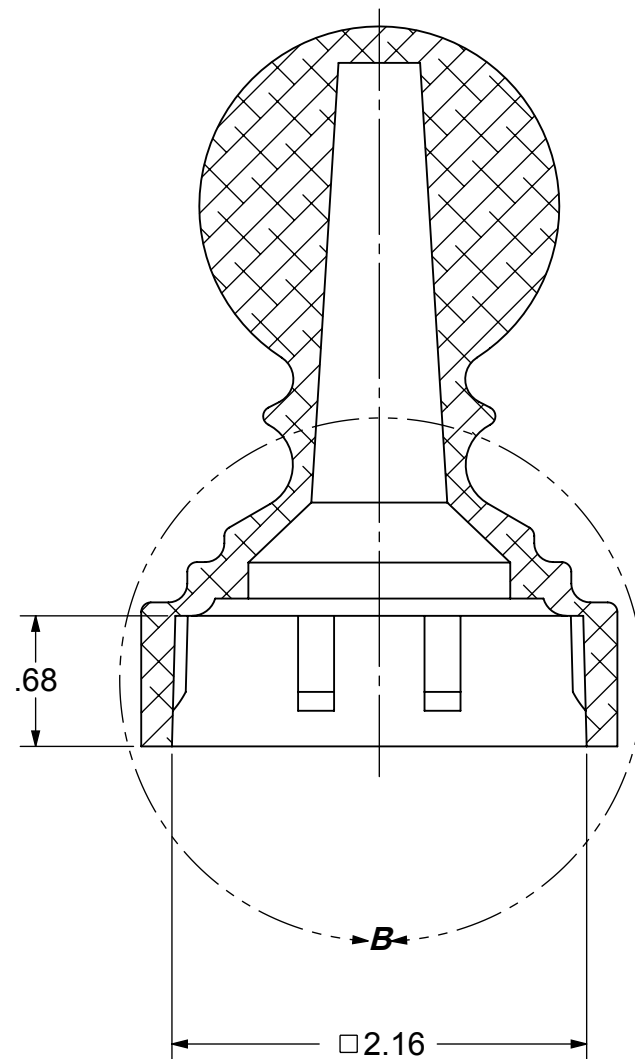
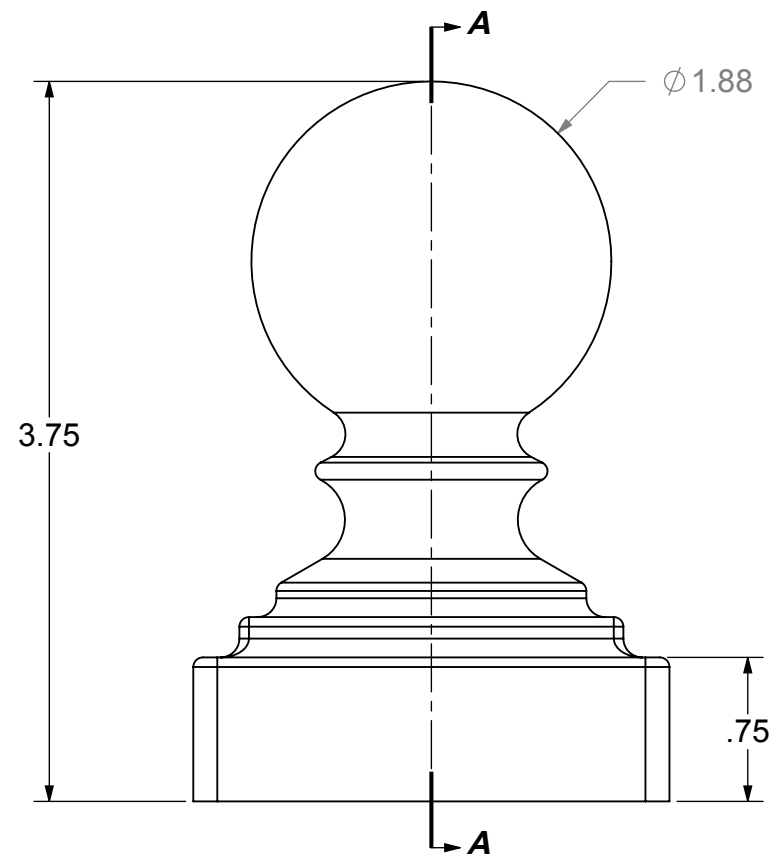
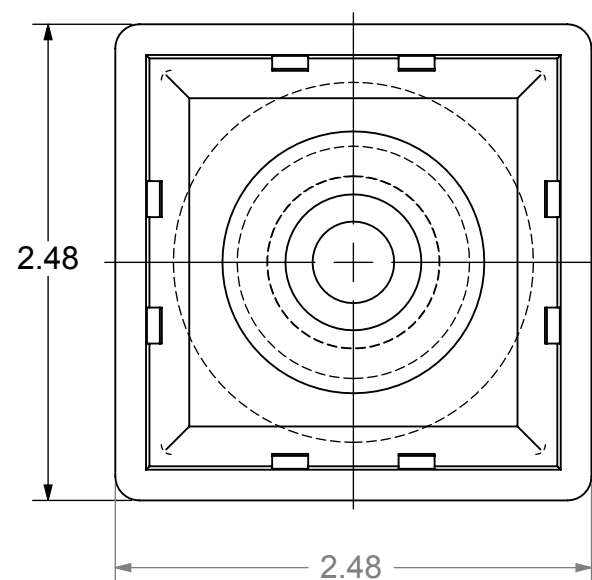


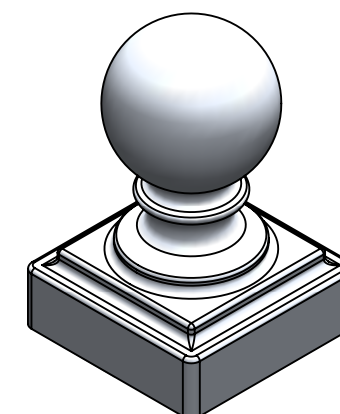
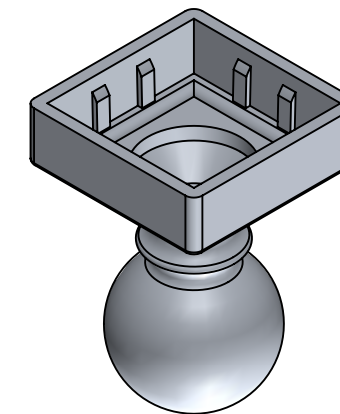
REVISIONS		DATE	APPD
ECR/DCR	REV.	DESCRIPTION	
-	-	-	-



DETAIL B



SECTION A-A



NOTES:

- PART TO HAVE A NON-ABRASIVE FINISH.
- PART TO HAVE MIN. DRAFT ANGLE AS TOOLING REQUIRES.
- ANY AND ALL CHANGES TO MATERIAL OR FINISH MUST BE APPROVED BY NWI.
- ALL DIAMETERS TO BE CONCENTRIC WITHIN .005 UNLESS OTHERWISE SPECIFIED.
- ALL CORNERS TO BE .015 MAX R OR CHAMFER OR OTHERWISE NOTED.
- ALL DIMENSIONS ARE FINISHED PART DIMENSIONS.
- PART VOLUME: 5.491 CU. IN.

PROPRIETARY AND CONFIDENTIAL
 THE INFORMATION CONTAINED IN THIS DRAWING IS THE SOLE PROPERTY OF NATIONWIDE INDUSTRIES. ANY REPRODUCTION IN PART OR AS A WHOLE WITHOUT THE WRITTEN PERMISSION OF NATIONWIDE INDUSTRIES IS PROHIBITED.

NAME	DATE
DRAWN: EET	9-26-12
CHECKED:	
ENG APPR.:	
MFG APPR.:	
G.A.:	
COMMENTS:	

DIMENSIONS ARE IN INCHES
 TOLERANCES:
 FRACTIONAL ±1/16"
 ANGULAR: MACH ±1° BEND ±1°
 TWO PLACE DECIMAL ±0.01
 THREE PLACE DECIMAL ±0.005

MATERIAL
A360 CAST ALUMINUM
 FINISH
 -
 APPLICATION
 DO NOT SCALE DRAWING



**BALL CAP 2in
 PRESS FIT**

SIZE	DWG. NO.	REV.
B	CS--NW242A	-
SCALE: 1:1.25	WEIGHT:	SHEET 1 OF 1