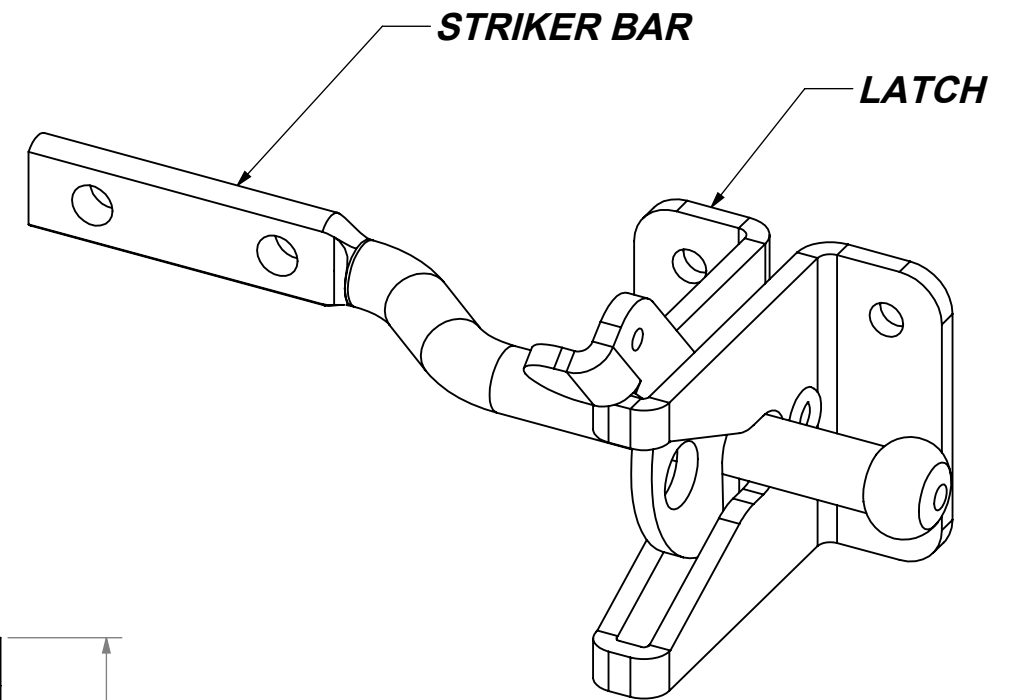
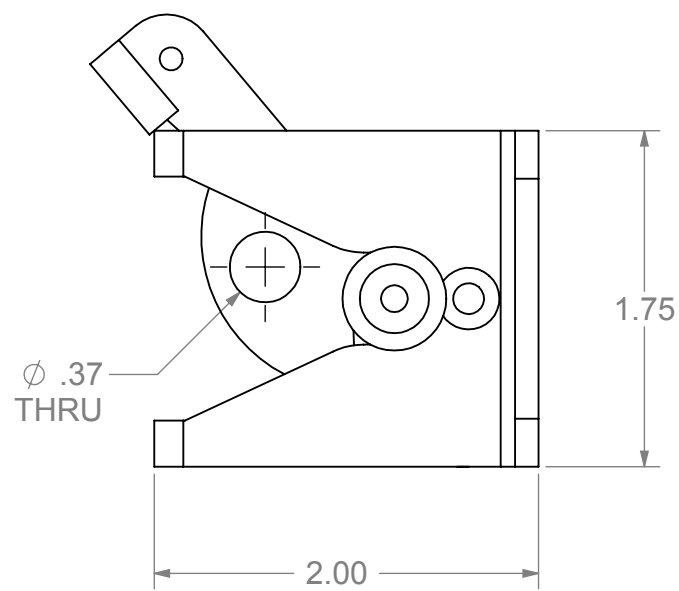
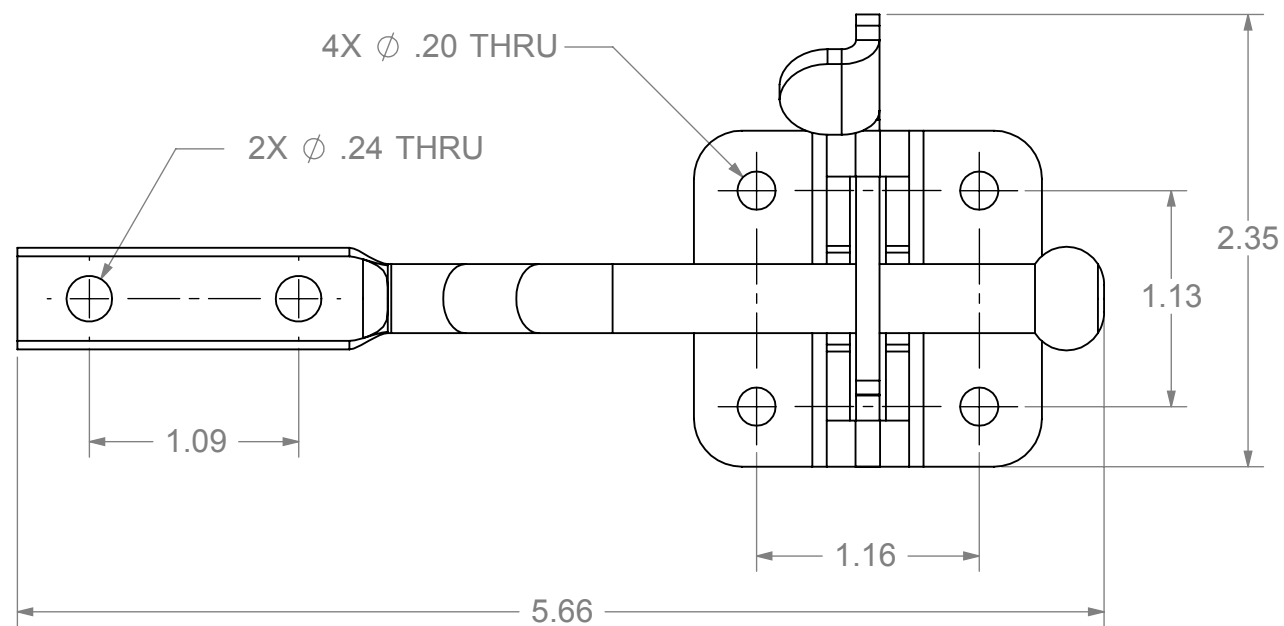
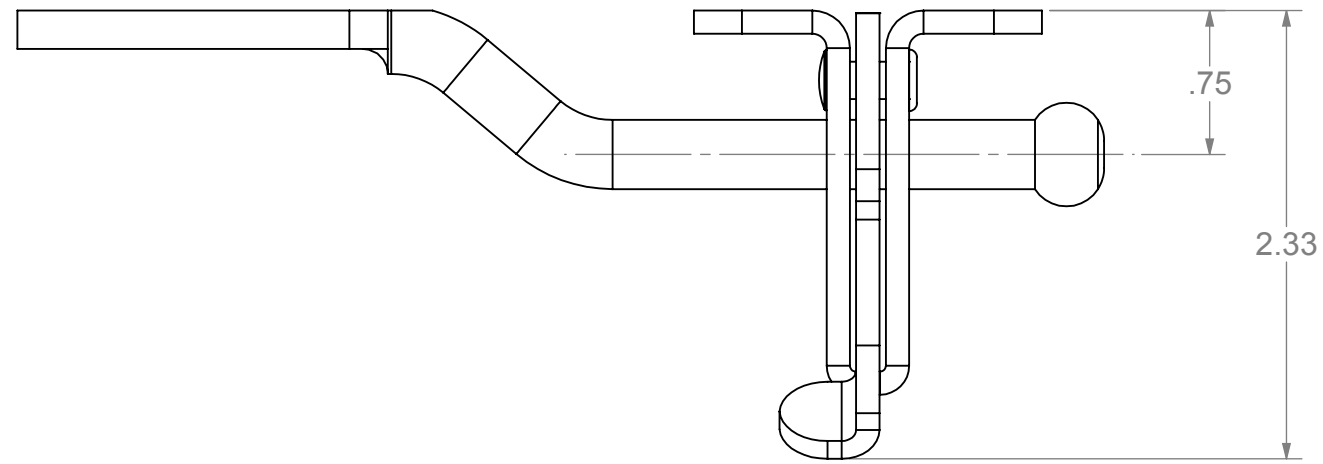


ECR/DCR REV.		REVISIONS DESCRIPTION	DATE	APPD
-	-	-	-	-



PACKAGING INSTRUCTIONS:

EACH SET MUST BE POLYBAGGED CONTAINING:

1. INDIVIDUALLY POLYBAGGGED (1) KEEPER BAR, AND (1) LATCH.
2. POLYBAGGED MOUNTING HARDWARE: (6) #12 x 1" LG. TRUSS HEAD PHILLIPS SCREWS, S/S, BLACK FINISH.

DRAFT COPY

PROPRIETARY AND CONFIDENTIAL

THE INFORMATION CONTAINED IN THIS DRAWING IS THE SOLE PROPERTY OF NATIONWIDE INDUSTRIES. ANY REPRODUCTION IN PART OR AS A WHOLE WITHOUT THE WRITTEN PERMISSION OF NATIONWIDE INDUSTRIES IS PROHIBITED.

DO NOT SCALE DRAWING



GRAVITY LATCH

SIZE	DWG. NO.	REV.
B	CS--NW38204-SSB	-
SCALE:1:1	WEIGHT: 0.47 LB.	SHEET 1 OF 1