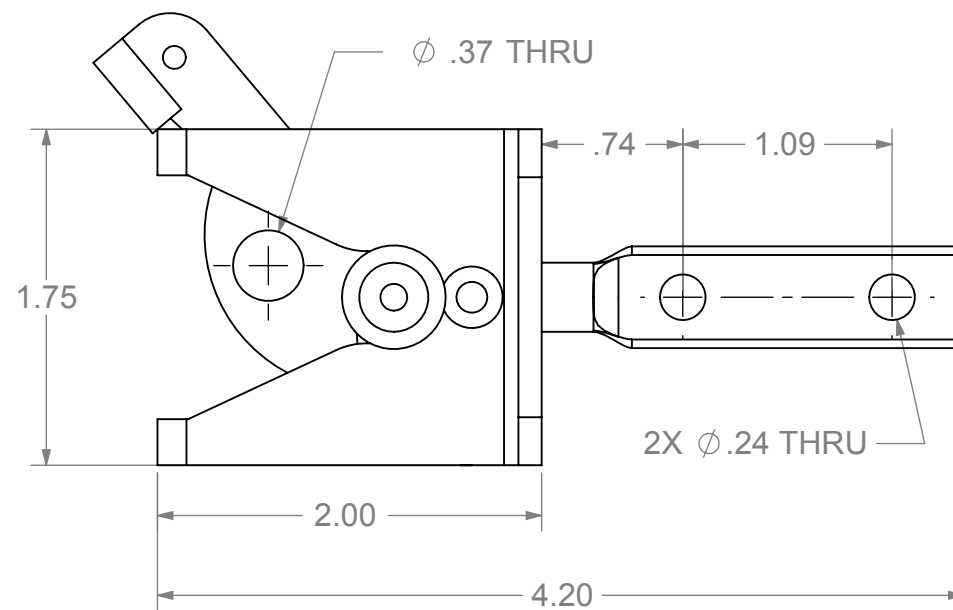
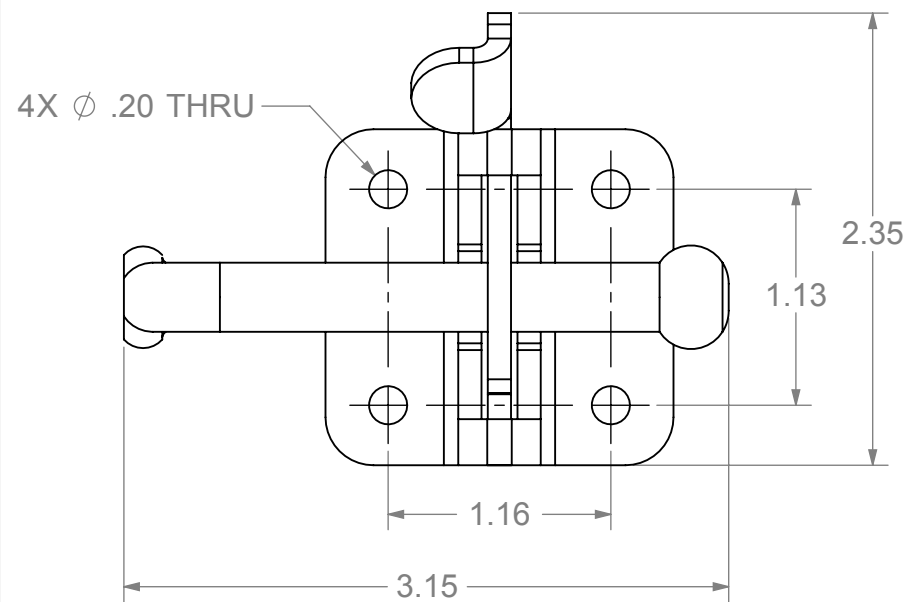
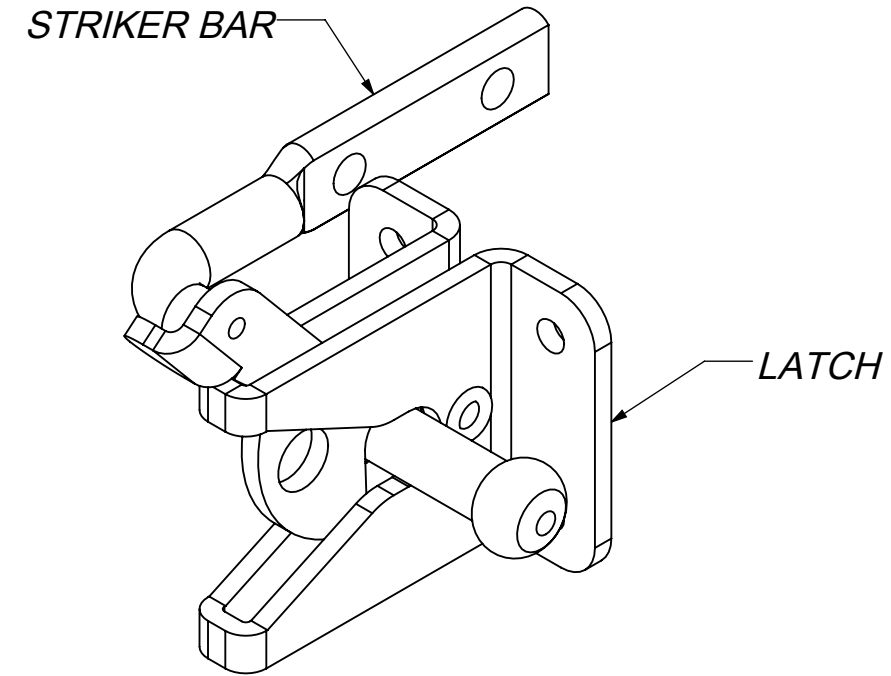
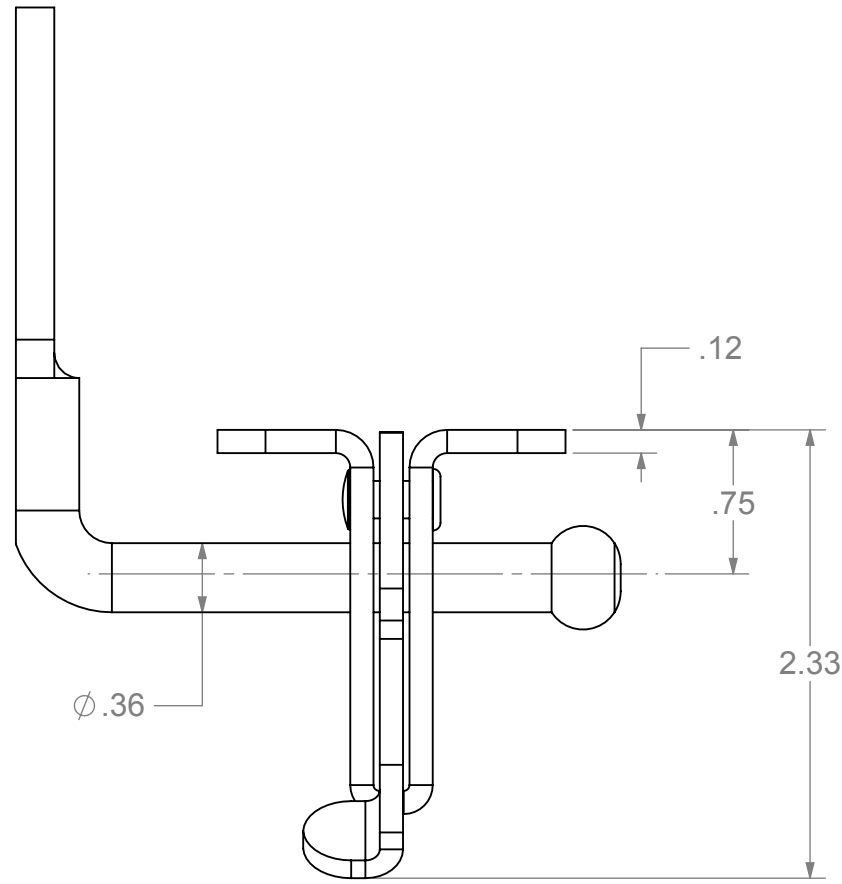


REVISIONS		DATE	APPD
ECR/DCR	REV.	DESCRIPTION	
-	-	NEW DRAWING	06-10-16



PACKAGING INSTRUCTIONS:

EACH SET MUST BE POLYBAGGED CONTAINING:

1. INDIVIDUALLY POLYBAGGED
(1) KEEPER BAR, AND (1) LATCH.
2. POLYBAGGED MOUNTING HARDWARE:
(6) #10 x 1-1/4" LG. PAN HEAD COMBINATION HEAD SHEET METAL SCREWS

DIMENSIONS ARE IN INCHES
TOLERANCES:
FRACTIONAL ±1/16"
ANGULAR: MACH ±1° BEND ±1°
TWO PLACE DECIMAL ±0.01
THREE PLACE DECIMAL ±0.005

	NAME	DATE
DRAWN	DDC	06-10-16
CHECKED	-	-
ENG APPR.	-	-
MFG APPR.	-	-
Q.A.	-	-



GRAVITY LATCH

PROPRIETARY AND CONFIDENTIAL
THE INFORMATION CONTAINED IN THIS DRAWING IS THE SOLE PROPERTY OF NATIONWIDE INDUSTRIES. ANY REPRODUCTION IN PART OR AS A WHOLE WITHOUT THE WRITTEN PERMISSION OF NATIONWIDE INDUSTRIES IS PROHIBITED.

NEXT ASSY	USED ON	APPLICATION
		DO NOT SCALE DRAWING

MATERIAL
ZINC PLATED STEEL
FINISH
POWDERCOAT

SIZE	DWG. NO.	REV.
B	CS--NW38204AQ	-

SCALE:1:1 WEIGHT: SHEET 1 OF 1