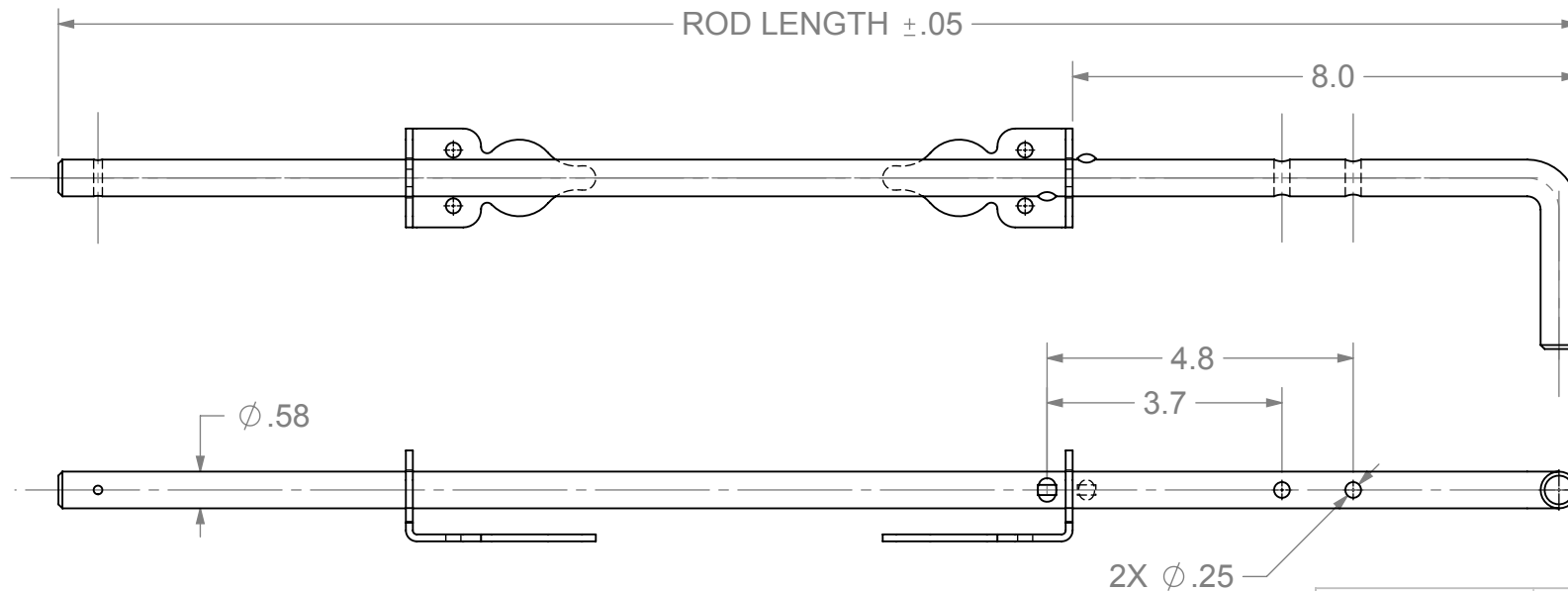
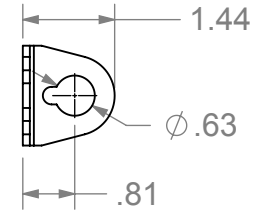
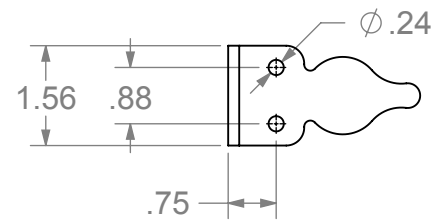
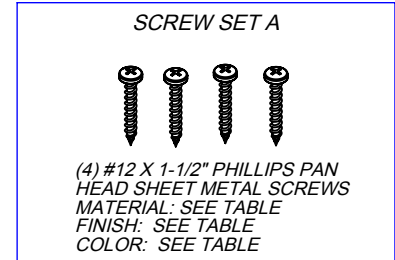
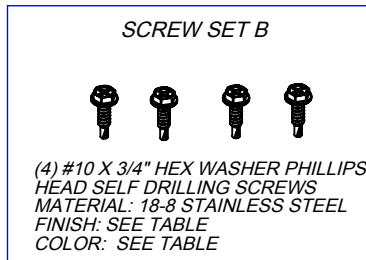


PART NUMBER	ROD LENGTH	MATERIAL	FINISH	COLOR	SCREW SET
NW38305-48SSW	48"	304 SS	POWDER COAT	WHITE	A
NW38305-48SSBZ	48"	304 SS	POWDER COAT	BRONZE	A
NW38305-48SSB	48"	304 SS	POWDER COAT	BLACK	A
NW38305-48SS	48"	304 SS	-	MILL	A
NW38305-48Q	48"	STEEL	POWDER COAT	BLACK	A
NW38305-36SSW	36"	304 SS	POWDER COAT	WHITE	A
NW38305-36SSBZ	36"	304 SS	POWDER COAT	BRONZE	A
NW38305-36SSB	36"	304 SS	POWDER COAT	BLACK	A
NW38305-36SS	36"	304 SS	-	MILL	A
NW38305-36Q	36"	STEEL	POWDER COAT	BLACK	A
NW38305-24SSW	24"	304 SS	POWDER COAT	WHITE	A
NW38305-24SSBZ	24"	304 SS	POWDER COAT	BRONZE	A
NW38305-24SSB	24"	304 SS	POWDER COAT	BLACK	A
NW38305-24SS	24"	304 SS	-	MILL	A
NW38305-24Q	24"	STEEL	POWDER COAT	BLACK	A
NW38305-24Q-HBZ	24"	STEEL	POWDER COAT	HBZ	A
NW38305/24-76Q	24"	STEEL	ZINC PLATE	-	A
NW38305-18SDBK	18"	STEEL	POWDER COAT	BLACK	B
NW38305-18Q	18"	STEEL	POWDER COAT	BLACK	A
NW38305-18/ZP	18"	STEEL	ZINC PLATE	-	A

ECR/DCR		REV.	REVISIONS	DESCRIPTION	DATE	APPD
-	-	-	INITIAL RELEASE		2/17/16	-



DIMENSIONS ARE IN INCHES
TOLERANCES:
FRACTIONAL $\pm 1/16"$
ANGULAR: MACH $\pm 1^\circ$ BEND $\pm 1^\circ$
TWO PLACE DECIMAL ± 0.01
THREE PLACE DECIMAL ± 0.005

PROPRIETARY AND CONFIDENTIAL
THE INFORMATION CONTAINED IN THIS DRAWING IS THE SOLE PROPERTY OF NATIONWIDE INDUSTRIES. ANY REPRODUCTION IN PART OR AS A WHOLE WITHOUT THE WRITTEN PERMISSION OF NATIONWIDE INDUSTRIES IS PROHIBITED.

NATIONWIDE INDUSTRIES

**18", 24", 36" & 48"
HEAVY DUTY DROP ROD
ASSEMBLY**

SIZE	DWG. NO.	REV.
A	CS--NW38305	-
SCALE: 1:3	MADE FROM REV 4	SHEET 1 OF 1