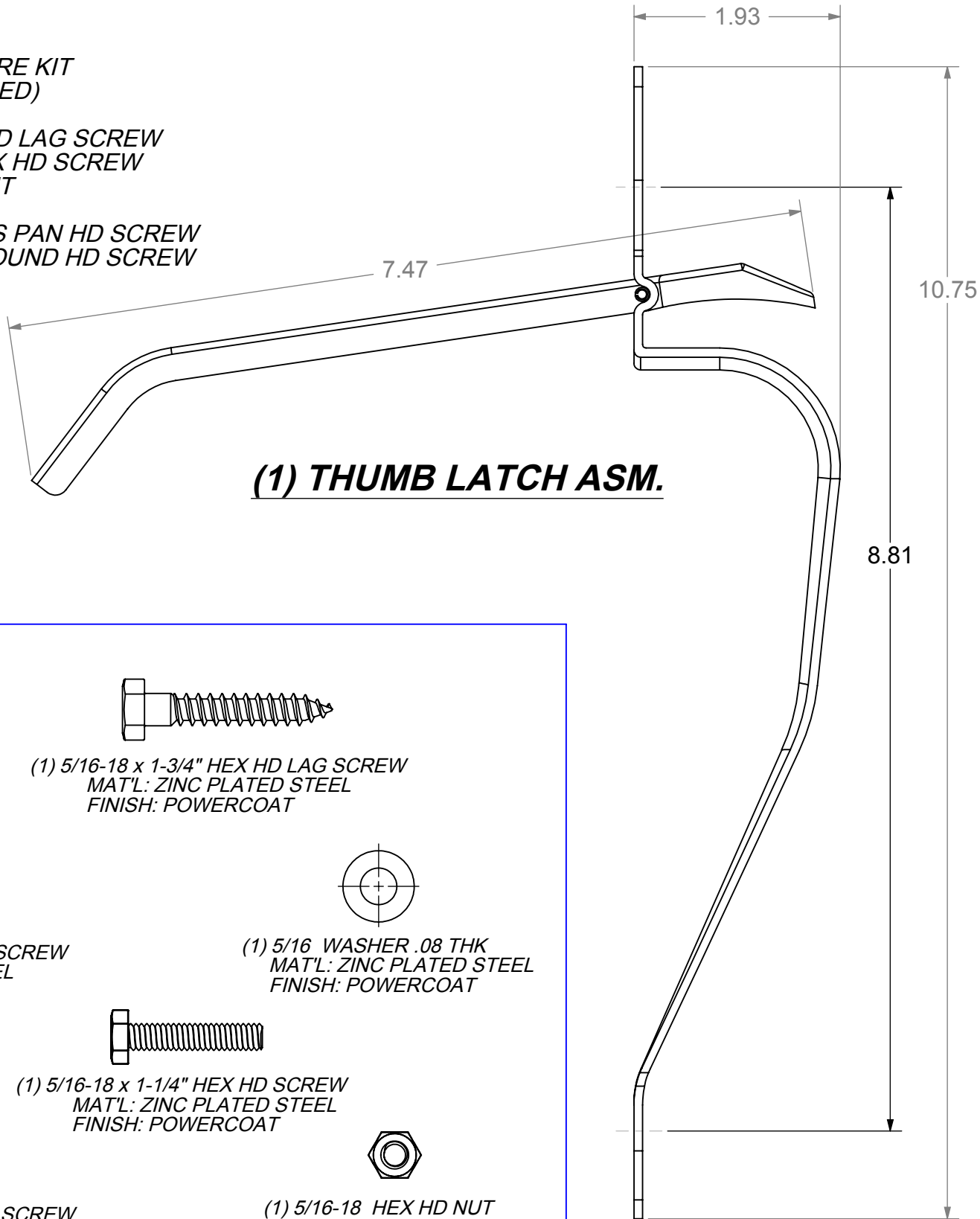
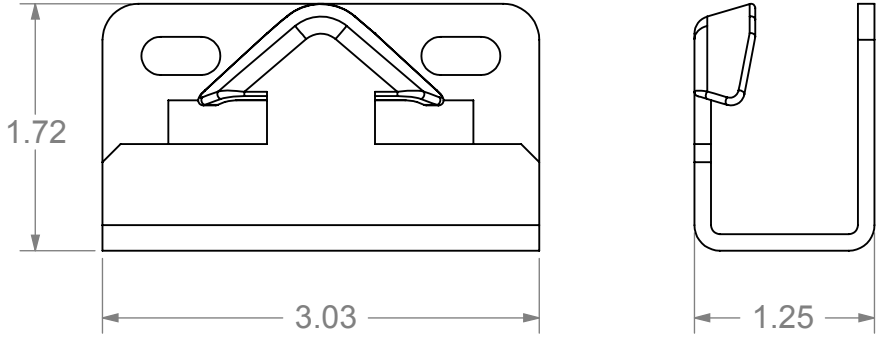
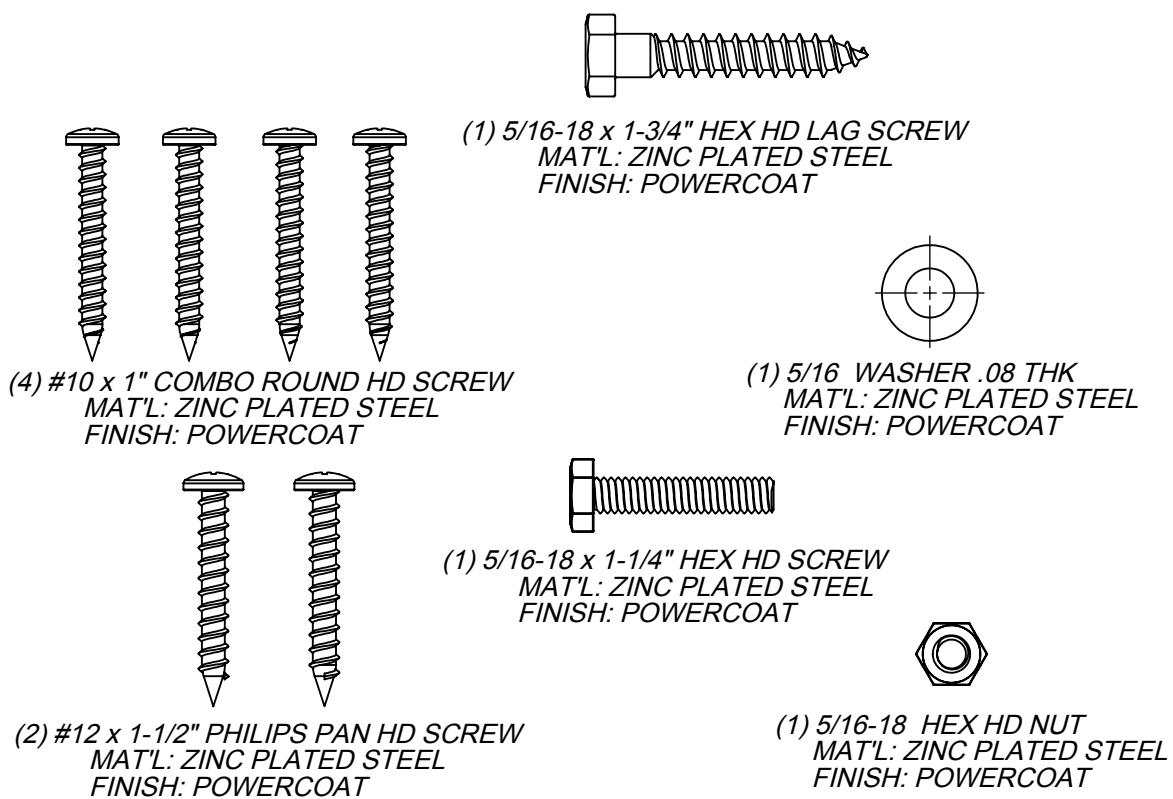


(1) UNIT TO CONSIST OF:

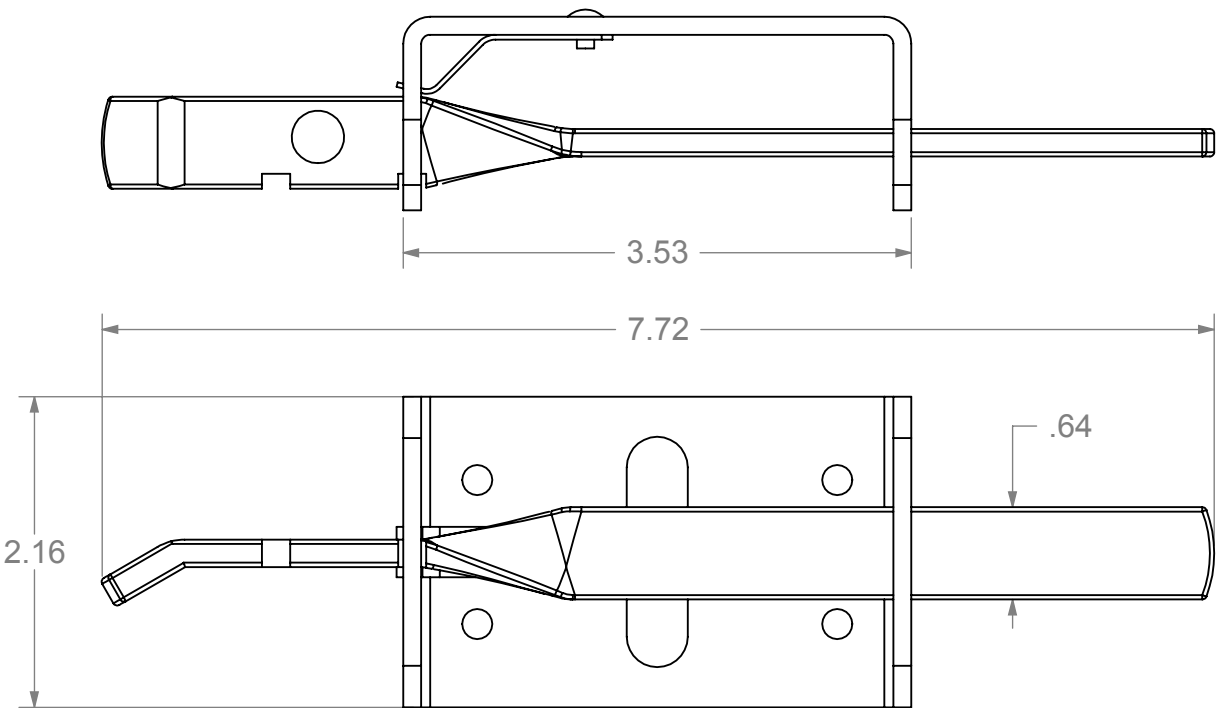
- (1) THUMB LATCH ASM
- (1) STRIKE BAR ASM.
- (1) KEEPER BASE
- (1) MOUNTING HARDWARE KIT (POLYBAGGED)
 - (1) 5/16 x 1-3/4" HEX HD LAG SCREW
 - (1) 5/16-18 x 1-1/4" HEX HD SCREW
 - (1) 5/16-18 HEX HD NUT
 - (1) 5/16 WASHER
 - (2) #12 x 1-1/2" PHILIPS PAN HD SCREW
 - (4) #10 x 1" COMBO ROUND HD SCREW



(1) THUMB LATCH ASM.



(1) KEEPER BRACKET



(1) STRIKE BAR ASM.

DIMENSIONS ARE IN INCHES TOLERANCES: FRACTIONAL $\pm 1/16"$ ANGULAR: MACH $\pm 1^\circ$ BEND $\pm 1^\circ$ TWO PLACE DECIMAL ± 0.01 THREE PLACE DECIMAL ± 0.005		NATIONWIDE INDUSTRIES
PROPRIETARY AND CONFIDENTIAL THE INFORMATION CONTAINED IN THIS DRAWING IS THE SOLE PROPERTY OF NATIONWIDE INDUSTRIES. ANY REPRODUCTION IN PART OR AS A WHOLE WITHOUT THE WRITTEN PERMISSION OF NATIONWIDE INDUSTRIES IS PROHIBITED.		
ORNAMENTAL 7" THUMB LATCH ASM. OUTLINE & DIMENSIONS		
SIZE B	DWG. NO. CS--NW38306A	REV. --
SCALE: 3/4	WEIGHT: LB.	SHEET 11 OF 1