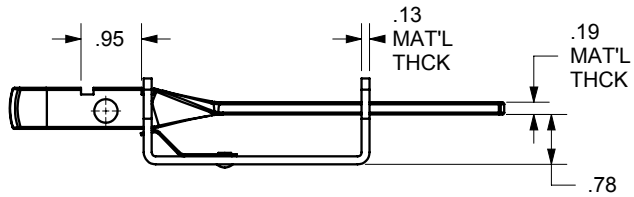
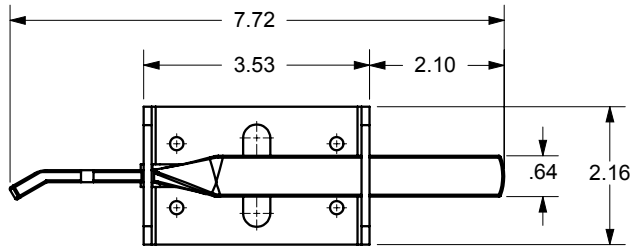
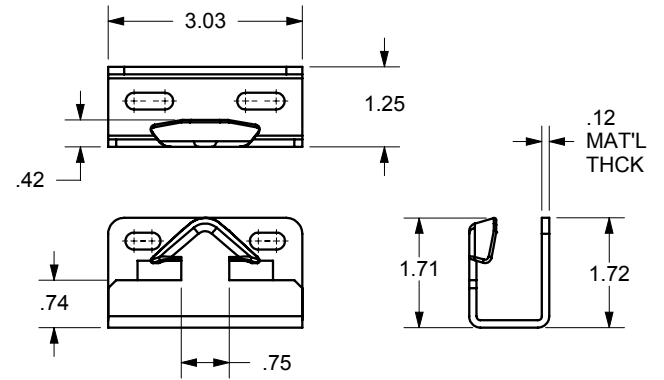
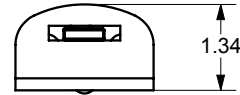


| ECR/DCR  |   | REV. | REVISIONS                                      | DATE     | APPD |
|----------|---|------|--|----------|------|
| -        | - | -    | INITIAL RELEASE                                | 01-08-10 | -    |
| DCR-0195 | 1 |      | ADD 1 ADDITIONAL 5/16 BOLT, WASHER, NUT, SHT 1 | 11-16-10 | CGS  |

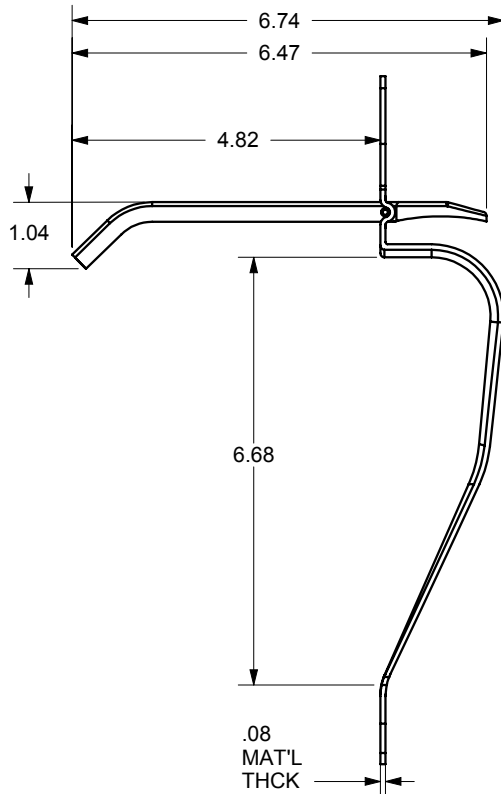


**STRIKE BAR ASSEMBLY**

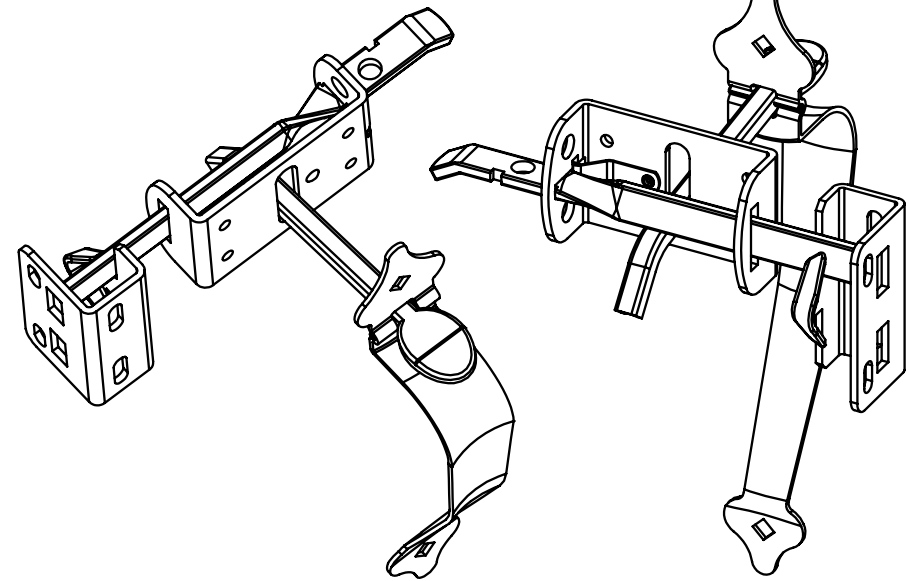
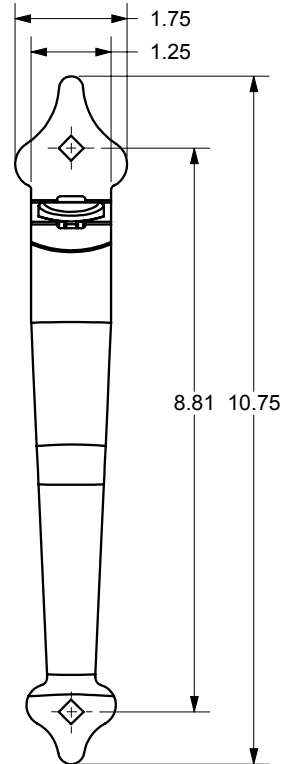
**MATERIAL: STEEL**  
**FINISH: BLACK, INTERPON 600 POWDERCOAT**  
**OR NWI APPROVED EQUIVALENT**



**KEEPER**



**THUMB LATCH ASSEMBLY**



- PACKAGING INSTRUCTIONS**
- (1) UNIT TO CONSIST OF:
    - (1) THUMB LATCH ASM
    - (1) STRIKE BAR ASM.
    - (1) KEEPER
  - (1) HARDWARE KIT (POLYBAGGED)
    - (1) 5/16 x 1-3/4" HEX HD LAG SCREW
    - (2) 5/16-18 x 1-1/4" HEX HD SCREW
    - (2) 5/16-18 HEX HD NUT
    - (2) 5/16 WASHER
    - (2) #12 x 1-1/2" PHILIPS PAN HD SCREW
    - (4) #10 x 5/8" COMBO ROUND HD SCREW
    - (4) #10 x 1-1/2" COMBO ROUND HD SCREW

**DRAFT COPY**



**ORNAMENTAL THUMB LATCH ASM. SPEC. SHEET**

DIMENSIONS ARE IN INCHES  
 TOLERANCES:  
 FRACTIONAL ± 1/16"  
 ANGULAR: MACH ± 1° BEND ± 1°  
 TWO PLACE DECIMAL ± 0.01  
 THREE PLACE DECIMAL ± 0.005

**PROPRIETARY AND CONFIDENTIAL**  
 THE INFORMATION CONTAINED IN THIS DRAWING IS THE SOLE PROPERTY OF NATIONWIDE INDUSTRIES. ANY REPRODUCTION IN PART OR AS A WHOLE WITHOUT THE WRITTEN PERMISSION OF NATIONWIDE INDUSTRIES IS PROHIBITED.

|            |             |              |
|------------|-------------|--------------|
| SIZE       | DWG. NO.    | REV.         |
| A          | CS--NW38307 | 1            |
| SCALE: 1:3 | WEIGHT: LB. | SHEET 1 OF 1 |