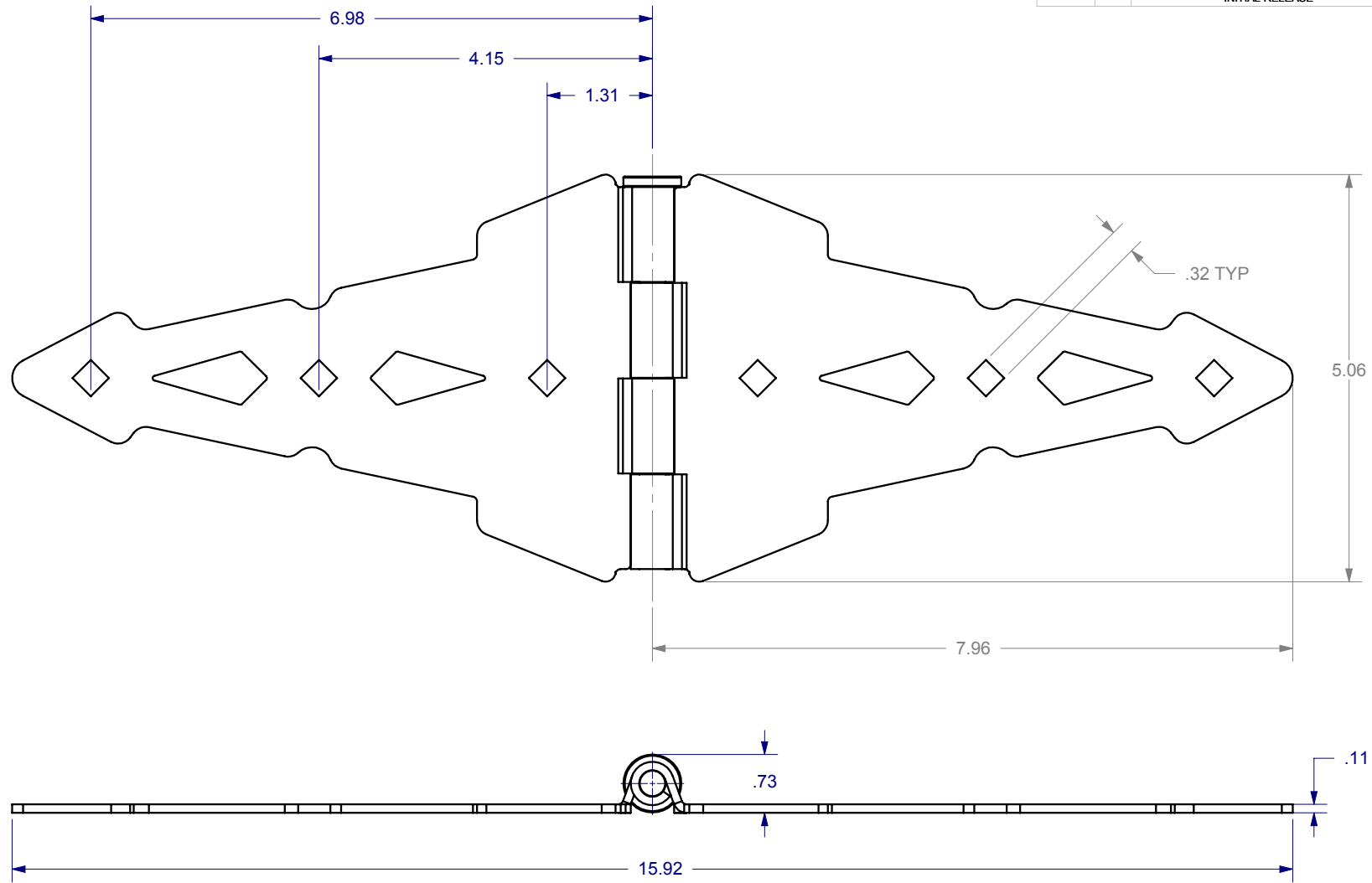


ECR/DCR		REV.		REVISIONS		DATE	APPD
				DESCRIPTION			
-	-	-	-	INITIAL RELEASE		08-15-08	EET

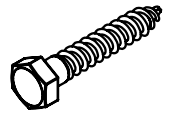


PACKAGING INSTRUCTIONS

- EACH SET TO CONTAIN:
- (2) HINGE ASSEMBLY INDIVIDUALLY POLYBAGGED.
 - (12) 5/16 x 1-3/4 LG. LAG SCREW INDIVIDUALLY POLYBAGGED.

NOTES:

1. PART TO HAVE A NON-ABRASIVE FINISH.
2. PART TO HAVE MIN. DRAFT ANGLE AS TOOLING REQUIRES.
3. ANY AND ALL CHANGES TO MATERIAL OR FINISH MUST BE APPROVED BY NWI.
4. ALL DIAMETERS TO BE CONCENTRIC WITHIN .005 UNLESS OTHERWISE SPECIFIED.
5. ALL CORNERS TO BE .015 MAX R OR CHAMFER OR OTHERWISE NOTED.
6. ALL DIMENSIONS ARE FINISHED PART DIMENSIONS.
7. POWDERCOAT FINISH TO BE INTERPON 600 OR NWI APPROVED EQUIVALENT.



5/16 x 1-3/4 LG. LAG SCREW

DRAFT COPY



PROPRIETARY AND CONFIDENTIAL
 THE INFORMATION CONTAINED IN THIS DRAWING IS THE SOLE PROPERTY OF NATIONWIDE INDUSTRIES. ANY REPRODUCTION IN PART OR AS A WHOLE WITHOUT THE WRITTEN PERMISSION OF NATIONWIDE INDUSTRIES IS PROHIBITED.

8" CONTEMPORARY DOUBLE STRAP HINGE

SIZE	DWG. NO.	REV.
A	CS-NW38944	-
SCALE:1:2	WEIGHT:	SHEET 1 OF 1