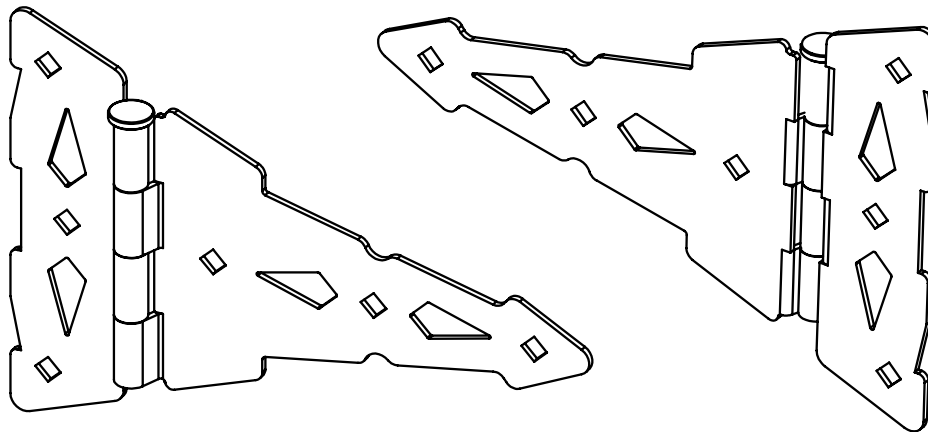


ECR/DCR		REV.	REVISIONS		DATE	APPD
			DESCRIPTION			
-	-	-	INITIAL RELEASE		01-08-10	-



PACKAGING INSTRUCTIONS

NW38945Q

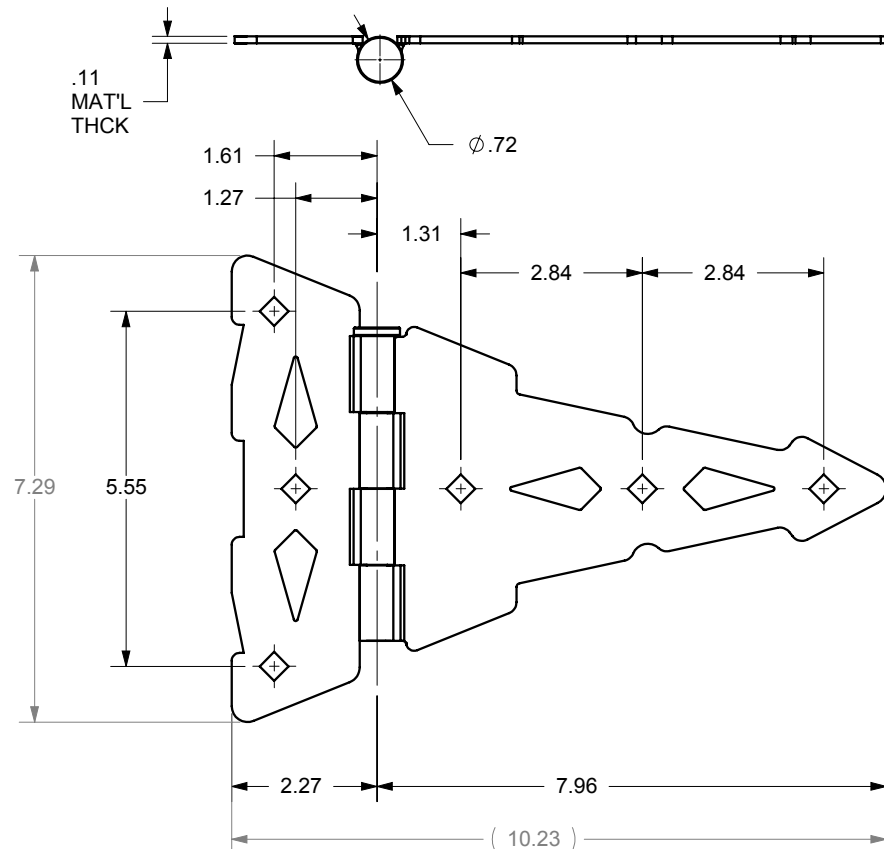
- (1) SET TO CONSIST OF:
 (2) HINGE ASSEMBLY INDIVIDUALLY POLYBAGGED.
 (1) HARDWARE KIT (POLYBAGGED):
 (12) 5/16 x 1-3/4 LG, BLACK, HDG STL LAG SCREW

NW38945SS

- (1) SET TO CONSIST OF:
 (2) HINGE ASSEMBLY INDIVIDUALLY POLYBAGGED.
 (1) HARDWARE KIT (POLYBAGGED):
 (12) 5/16 x 1-3/4 LG, MILL, 18-8 SS LAG SCREW


NW38945MDQ

- (1) SET TO CONSIST OF:
 (2) HINGE ASSEMBLY INDIVIDUALLY POLYBAGGED.
 (1) HARDWARE KIT (POLYBAGGED):
 (6) 5/16 x 3.00 LG, BLACK, HDG STL LAG SCREW
 (6) 5/16-18 x 3.00 LG, BLACK, ZINC PLATED STL CARRIAGE BOLT
 (6) 5/16 FLAT WASHER, BLACK, ZINC PLATED STL
 (6) 5/16-18 NUT, BLACK, ZINC PLATED STL



PART #	MATERIAL	FINISH
NW38945Q	ZINC PLATE STEEL	BLACK, INTERPON 600 POWDERCOAT OR NWI APPROVED EQUIVALENT
NW38945SS	304 STAINLESS STEEL	MILL
NW38945MDQ	ZINC PLATE STEEL	BLACK, INTERPON 600 POWDERCOAT OR NWI APPROVED EQUIVALENT

DRAFT COPY

DIMENSIONS ARE IN INCHES TOLERANCES: FRACTIONAL $\pm 1/16$ " ANGULAR: MACH $\pm 1^\circ$ BEND $\pm 1^\circ$ TWO PLACE DECIMAL ± 0.01 THREE PLACE DECIMAL ± 0.005		 NATIONWIDE INDUSTRIES	
PROPRIETARY AND CONFIDENTIAL THE INFORMATION CONTAINED IN THIS DRAWING IS THE SOLE PROPERTY OF NATIONWIDE INDUSTRIES. ANY REPRODUCTION IN PART OR AS A WHOLE WITHOUT THE WRITTEN PERMISSION OF NATIONWIDE INDUSTRIES IS PROHIBITED.		8" CONTEMPORARY "T" HINGE SPEC. SHEET	
SIZE A DWG. NO. CS--NW38945	SCALE: 1:3 WEIGHT: 1.188 LB.	REV. - SHEET 1 OF 1	