



ECR/DCR REV.		REVISIONS DESCRIPTION	DATE	APPD
-	-	INITIAL RELEASE	4-5-11	-



**SELF DRILLING SCREW**  
(32) #14 X 1" HEX WASHER HEAD, 18-8 SS

**OR\*\***



**SHEET METAL SCREW**  
(32) #14 X 3/4" PAN HEAD PHILIPS, 18-8 SS

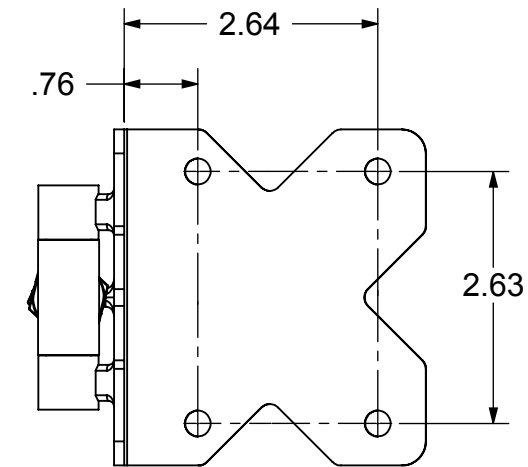
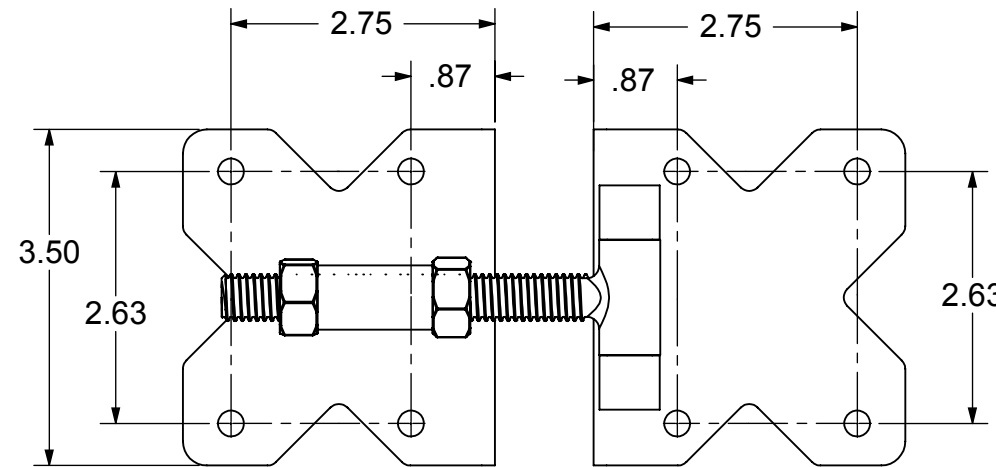
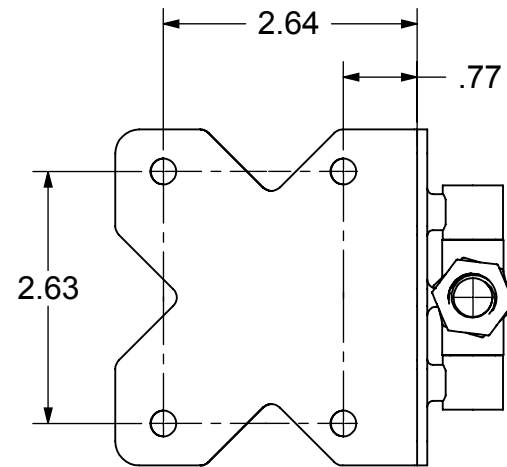
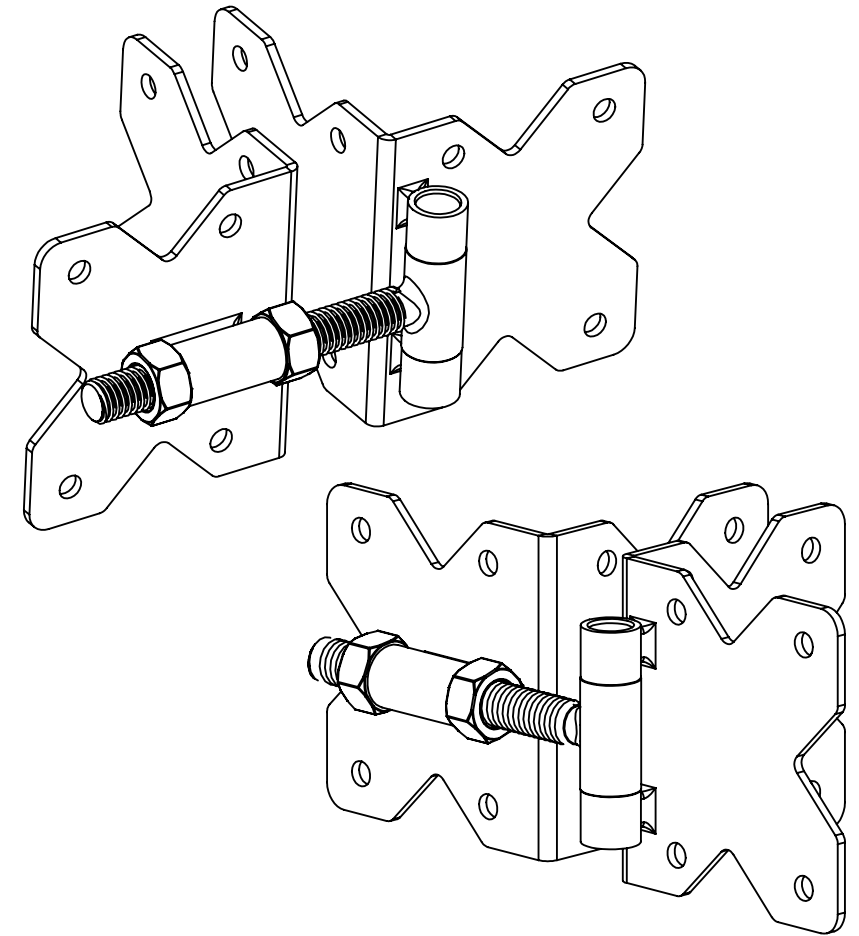
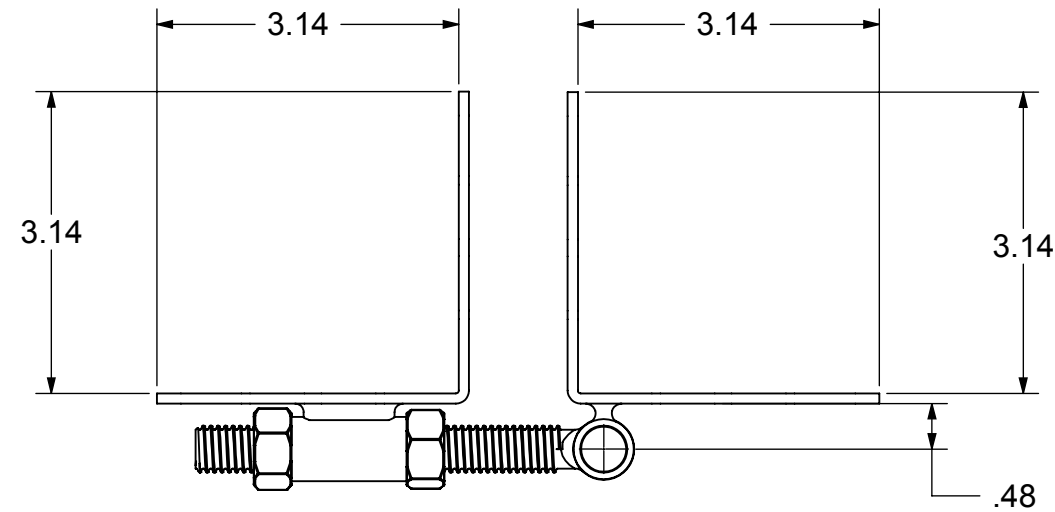
\*\* SEE CHART FOR SCREW SELECTION

**NOTES:**

1. PART TO HAVE A NON-ABRASIVE FINISH.
2. PART TO HAVE MIN. DRAFT ANGLE AS TOOLING REQUIRES.
3. ANY AND ALL CHANGES TO MATERIAL OR FINISH MUST BE APPROVED BY NWI.
4. ALL DIAMETERS TO BE CONCENTRIC WITHIN .005 UNLESS OTHERWISE SPECIFIED.
5. ALL CORNERS TO BE .015 MAX R OR CHAMFER OR OTHERWISE NOTED.
6. ALL DIMENSIONS ARE FINISHED PART DIMENSIONS.

**PACKAGING INSTRUCTIONS**

- 1) #14 MOUNTING SCREWS TO BE POLYBAGGED (32) PER PACKAGE
- 2) POLYBAGGED HINGE SET TO CONTAIN: 2 HINGE ASSEMBLIES, 1 PACKAGE OF #14 MOUNTING SCREWS.
- 3) BOX TO CONTAIN 12 HINGE SETS.



**DRAFT COPY**

PART NO.	COLOR	L*	a*	b*	G*	SCREW
NW38950NSSB	BLACK	24	0	0	35	SHEET METAL
NW38950NSSW	WHITE	94.5	-1.4	1.5	80	SELF DRILLING
NW38950NSSBD	BLACK	24	0	0	35	SHEET METAL
NW38950NSSWD	WHITE	94.5	-1.4	1.5	80	SELF DRILLING

**MATERIAL: 304 SS**  
**FINISH: INTERPON 600 POWDER COAT**

DIMENSIONS ARE IN INCHES  
TOLERANCES:  
FRACTIONAL ±1/16"  
ANGULAR: MACH ±1° BEND ±1°  
TWO PLACE DECIMAL ±0.01  
THREE PLACE DECIMAL ±0.005

**PROPRIETARY AND CONFIDENTIAL**  
THE INFORMATION CONTAINED IN THIS DRAWING IS THE SOLE PROPERTY OF NATIONWIDE INDUSTRIES. ANY REPRODUCTION IN PART OR AS A WHOLE WITHOUT THE WRITTEN PERMISSION OF NATIONWIDE INDUSTRIES IS PROHIBITED.



**STANDARD TO STANDARD  
NON SELF CLOSING  
ADJUSTABLE SS HINGE**

SIZE <b>B</b>	DWG. NO. <b>CS-NW38950</b>	REV. -
SCALE: 1:2	WEIGHT:	SHEET 1 OF 1