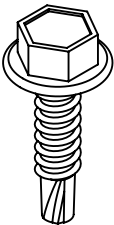
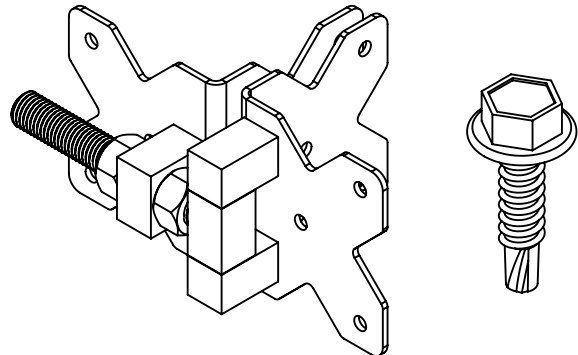
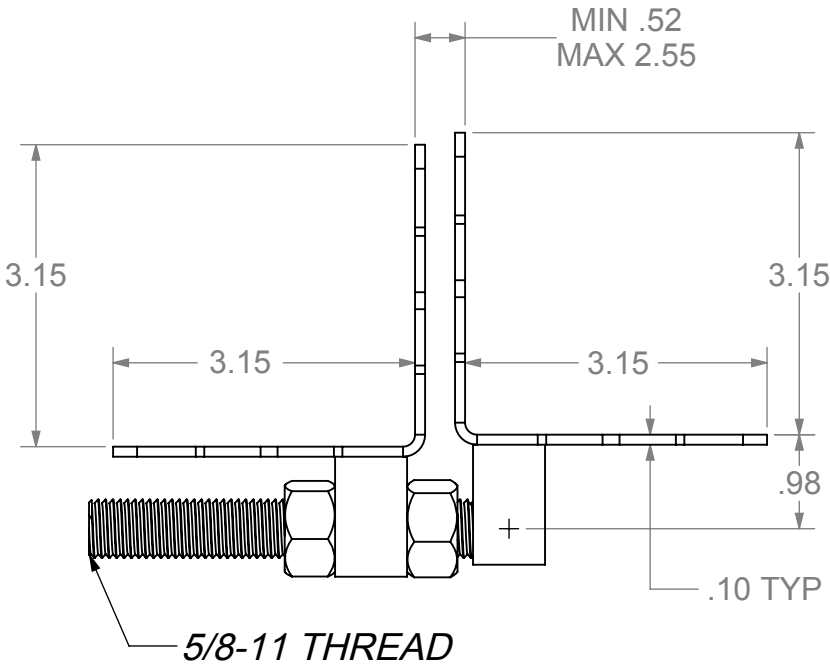
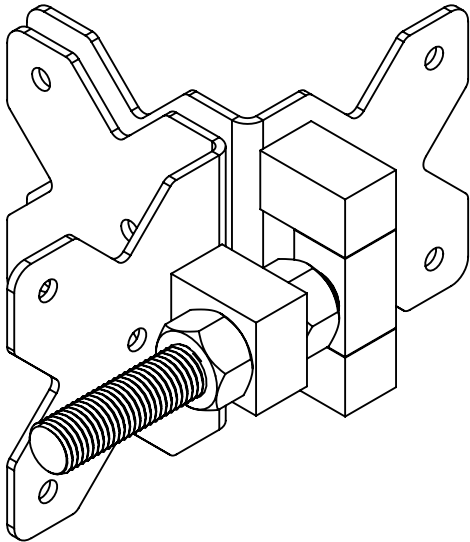
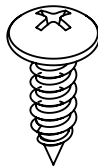
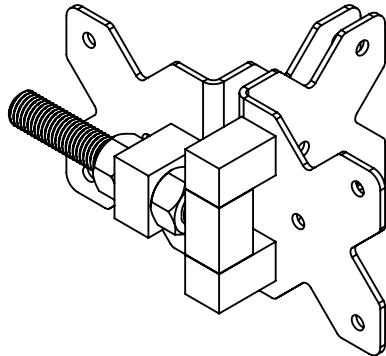


PART #	COLOR	SCREW
NW38954-SSBD	BLACK	SELF DRILLING
NW38954-SSB	BLACK	SHEET METAL
NW38954-SSW	WHITE	SHEET METAL



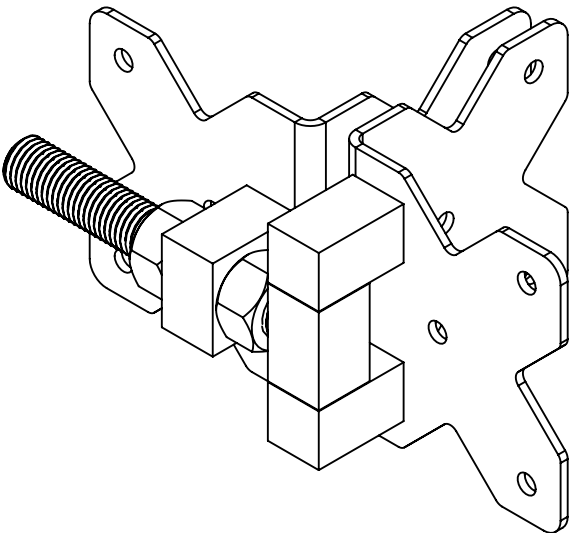
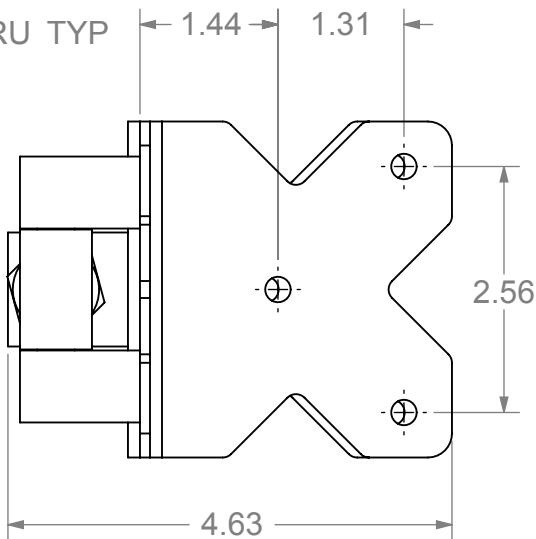
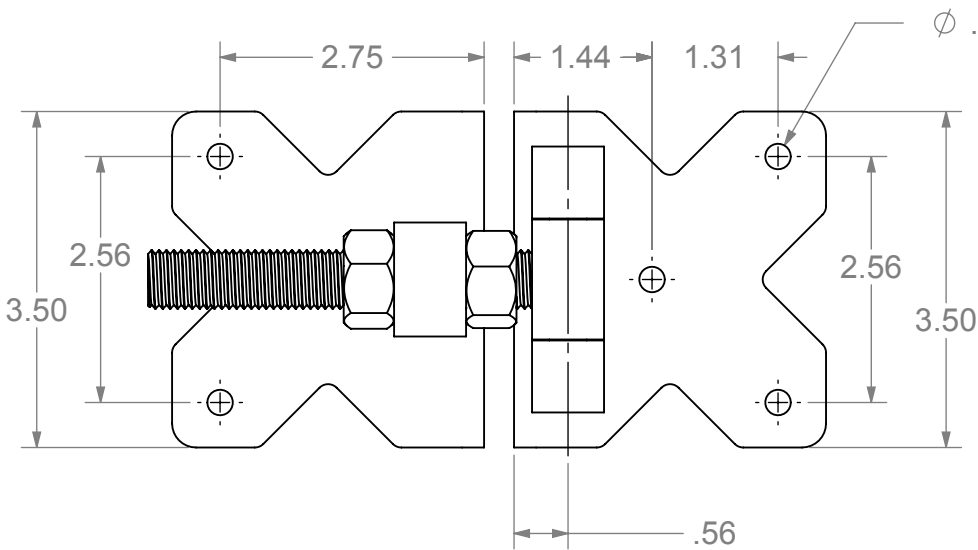
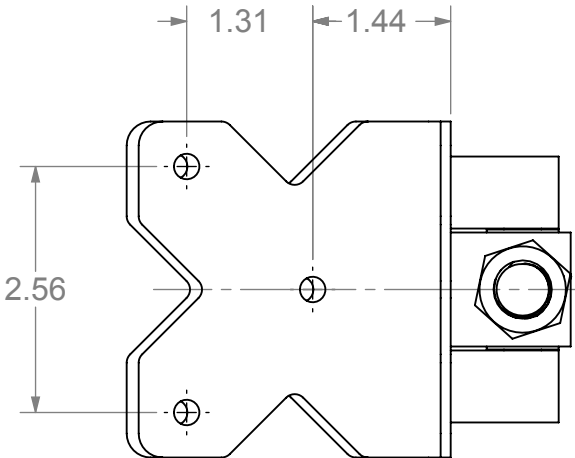
SELF DRILLING
HINGE MOUNTING SCREW
(24) #14 x 1.0" SS SELF DRILLING
HEX WASHER HEAD SCREW

OR



SHEET METAL
HINGE MOUNTING SCREW
(24) #14 X 3/4" 316 SS PHILIPS
PAN HEAD SCREWS

(2) HINGE ASSEMBLIES



- NOTES:
- PART TO HAVE A NON-ABRASIVE FINISH.
 - PART TO HAVE MIN. DRAFT ANGLE AS TOOLING REQUIRES.
 - ANY AND ALL CHANGES TO MATERIAL OR FINISH MUST BE APPROVED BY NWI.
 - ALL DIAMETERS TO BE CONCENTRIC WITHIN .005 UNLESS OTHERWISE SPECIFIED.
 - ALL CORNERS TO BE .015 MAX R OR CHAMFER OR OTHERWISE NOTED.
 - ALL DIMENSIONS ARE FINISHED PART DIMENSIONS.
 - POWDERCOAT FINISH TO BE INTERPON 600 OR NWI APPROVED EQUIVALENT.

PROPRIETARY AND CONFIDENTIAL

THE INFORMATION CONTAINED IN THIS DRAWING IS THE SOLE PROPERTY OF NATIONWIDE INDUSTRIES. ANY REPRODUCTION IN PART OR AS A WHOLE WITHOUT THE WRITTEN PERMISSION OF NATIONWIDE INDUSTRIES IS PROHIBITED.

NEXT ASSY	USED ON
APPLICATION	

DIMENSIONS ARE IN INCHES
TOLERANCES:
FRACTIONAL $\pm 1/16"$
ANGULAR: MACH $\pm 1^\circ$ BEND $\pm 1^\circ$
TWO PLACE DECIMAL ± 0.01
THREE PLACE DECIMAL ± 0.005

MATERIAL
12 GA. 304 SS
FINISH
POWDER COAT

DO NOT SCALE DRAWING

	NAME	DATE
DRAWN	AM	8/20/15
CHECKED	-	-
ENG APPR.	-	-
MFG APPR.	-	-
Q.A.	-	-

COMMENTS:



HEAVY DUTY ADJ.
HINGE, SS

SIZE	DWG. NO.	REV.
B	CS--NW38954	-
SCALE:1:2	WEIGHT:	SHEET 1 OF 1