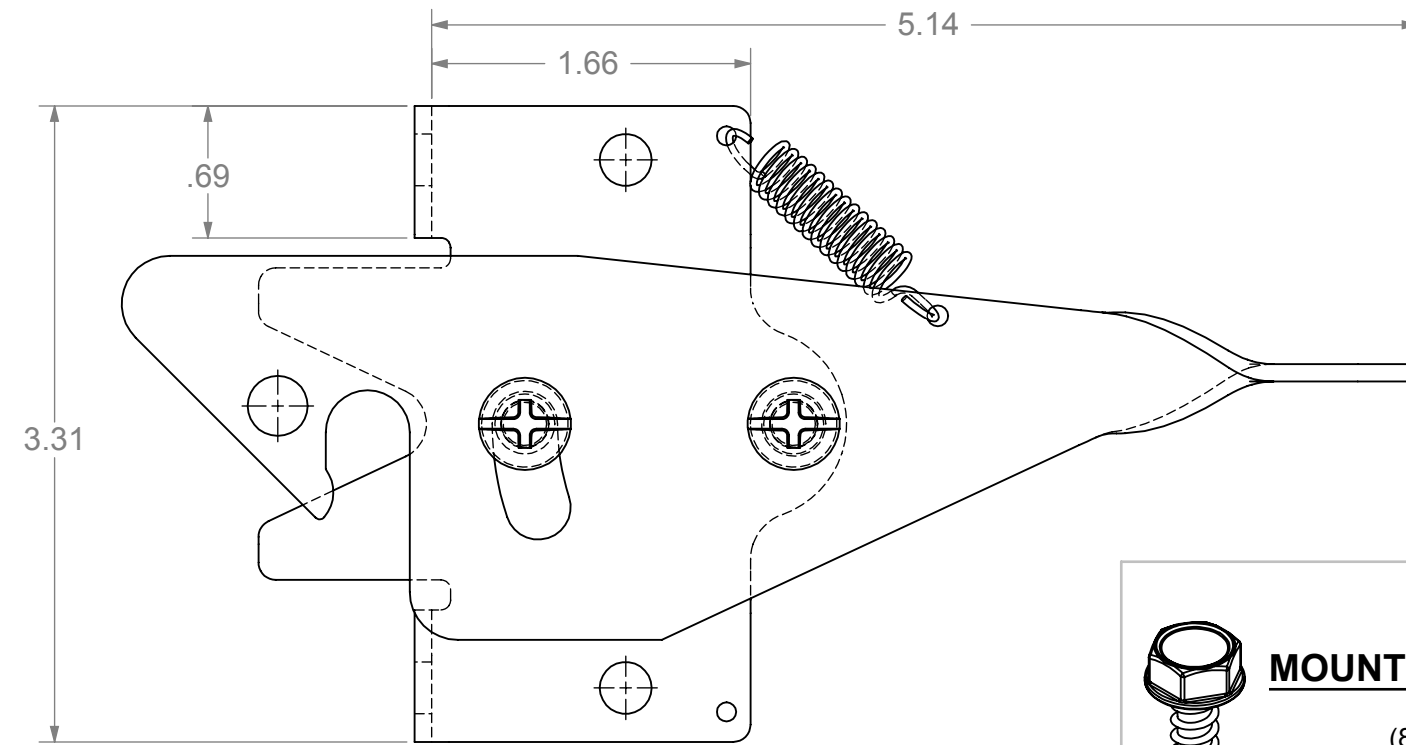
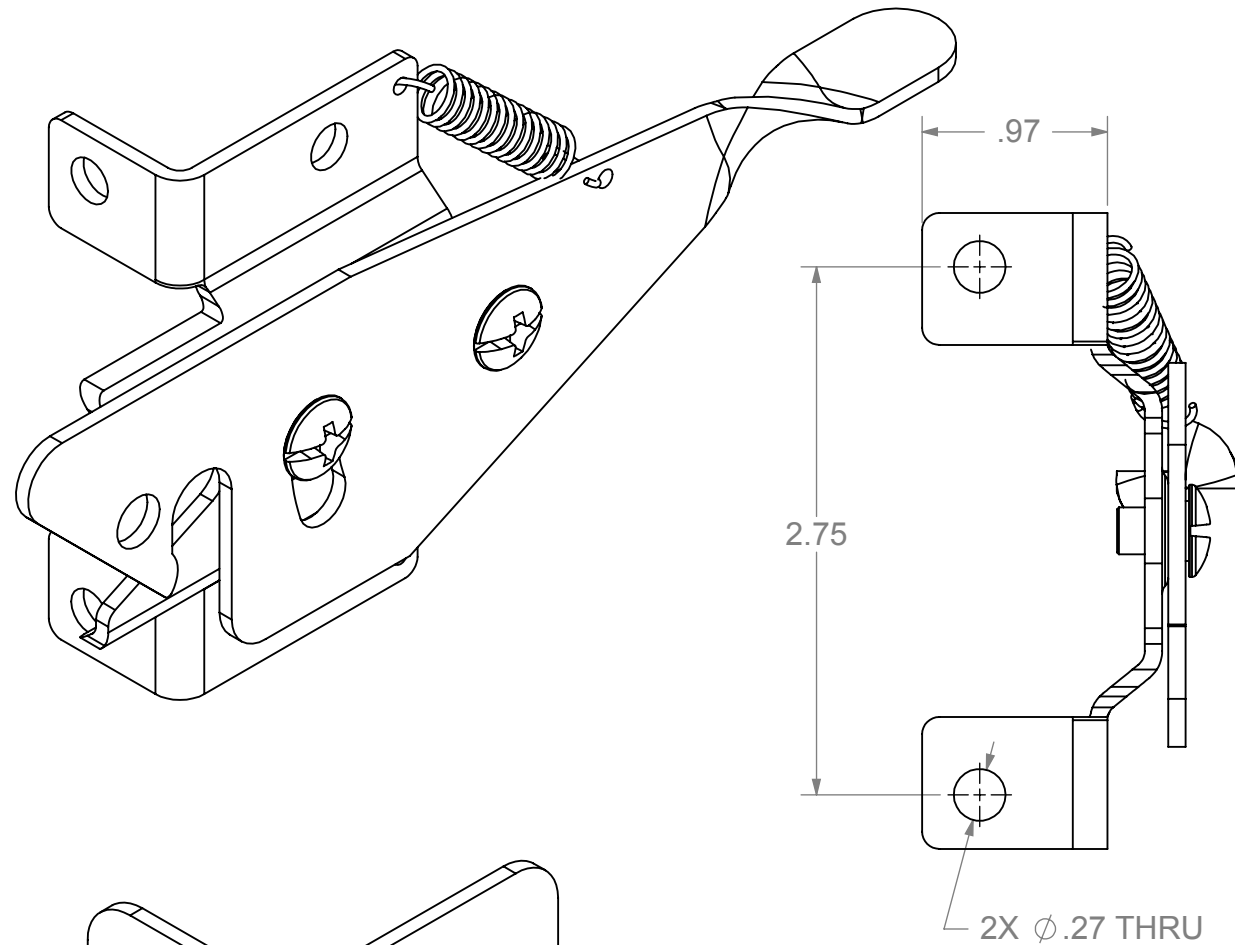
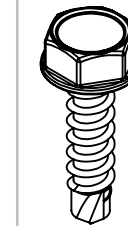


ECR / DCR		REV.	REVISIONS DESCRIPTION	DATE	APP'D
-	-	-	-	-	-

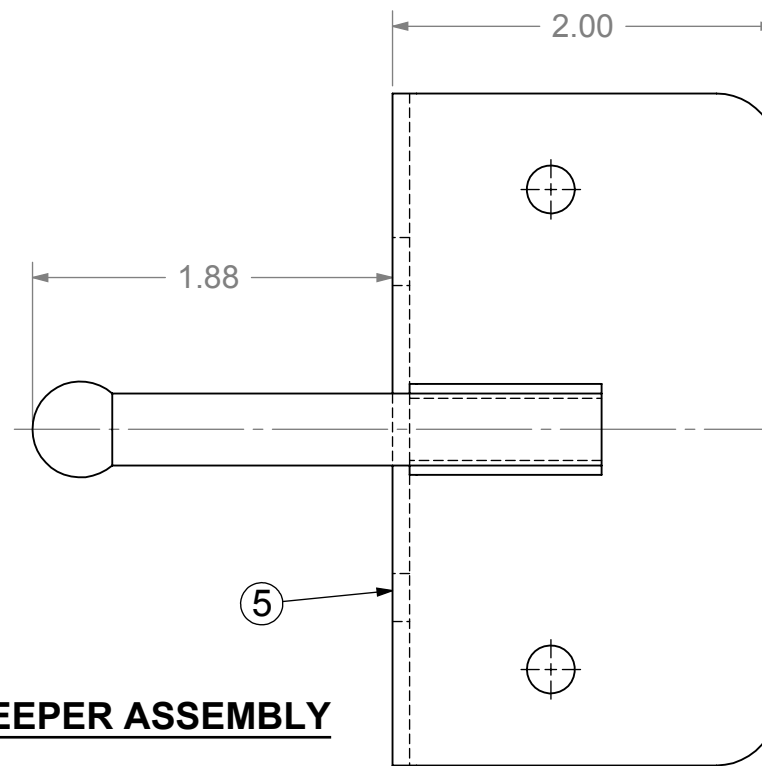
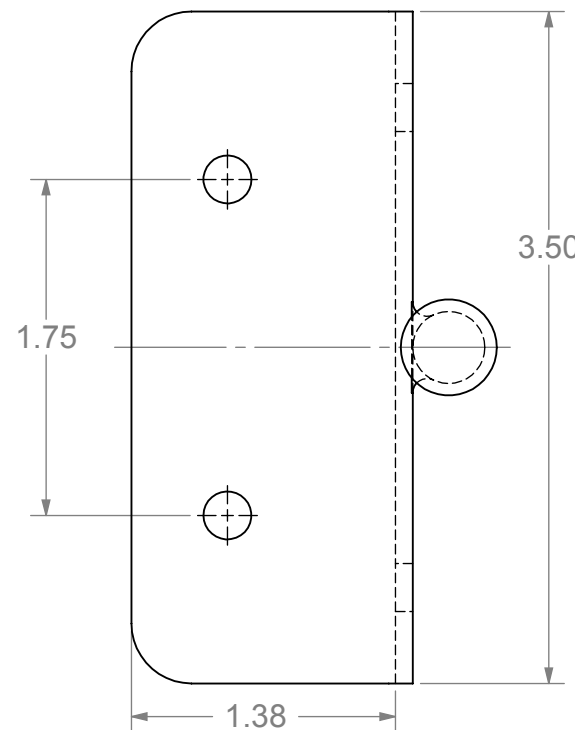
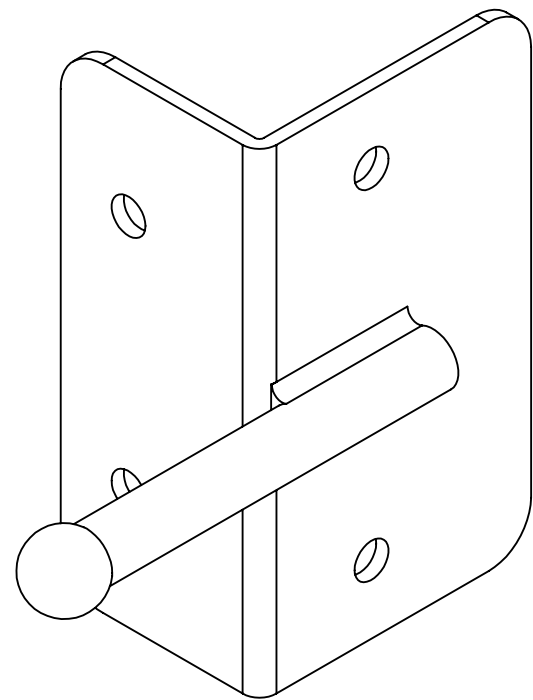


LATCH ASSEMBLY



MOUNTING SCREWS

(8) #14 x 1"
SELF DRILLING SCREW
18-8 HEX FLANGE HEAD



KEEPER ASSEMBLY

PACKAGING INSTRUCTIONS

- 1) POLYBAG (8) MOUNTING SCREWS
- 2) POLYBAG (1) LATCH ASSEMBLY
- 3) POLYBAG (1) KEEPER ASSEMBLY
- 4) POLYBAG (1) LATCH ASSEMBLY, (1) KEEPER ASSEMBLY AND (1) MOUNTING SCREW PACK
- 5) PACK (40) UNITS PER CARTON

NOTES:

1. PART TO HAVE A NON-ABRASIVE FINISH.
2. PART TO HAVE MIN. DRAFT ANGLE AS TOOLING REQUIRES.
3. ANY AND ALL CHANGES TO MATERIAL OR FINISH MUST BE APPROVED BY NWI.
4. ALL DIAMETERS TO BE CONCENTRIC WITHIN .005 UNLESS OTHERWISE SPECIFIED.
5. ALL CORNERS TO BE .015 MAX R OR CHAMFER OR OTHERWISE NOTED.
6. ALL DIMENSIONS ARE FINISHED PART DIMENSIONS.
7. POWDERCOAT FINISH TO BE INTERPON 600 OR NWI APPROVED EQUIVALENT.

PROPRIETARY AND CONFIDENTIAL

THE INFORMATION CONTAINED IN THIS DRAWING IS THE SOLE PROPERTY OF NATIONWIDE INDUSTRIES. ANY REPRODUCTION IN PART OR AS A WHOLE WITHOUT THE WRITTEN PERMISSION OF NATIONWIDE INDUSTRIES IS PROHIBITED.

NEXT ASSY	USED ON
APPLICATION	

DIMENSIONS ARE IN INCHES
TOLERANCES:
FRACTIONAL $\pm 1/16"$
ANGULAR: MACH $\pm 1^\circ$ BEND $\pm 1^\circ$
TWO PLACE DECIMAL ± 0.01
THREE PLACE DECIMAL ± 0.005

MATERIAL
304 STAINLESS STEEL

FINISH
POWDERCOAT

DO NOT SCALE DRAWING

	NAME	DATE
DRAWN	LA	08-23-07
CHECKED		
ENG APPR.	EET	08-23-07
MFG APPR.		
Q.A.		
COMMENTS:		



**TWO-WAY LATCH ASSEMBLY
NW6068AL**

SIZE B	DWG. NO. CS-NW6068AL -	REV. -
SCALE: 1:1	WEIGHT: .83 LB	SHEET 1 OF 1