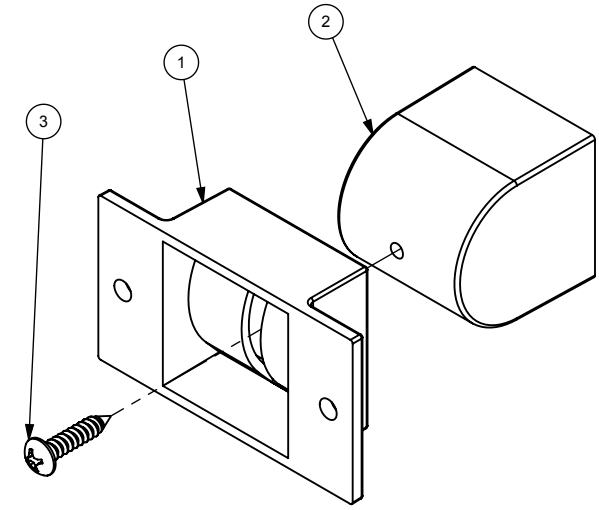
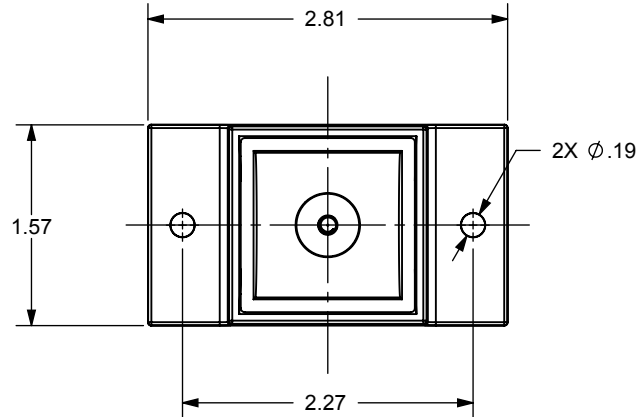
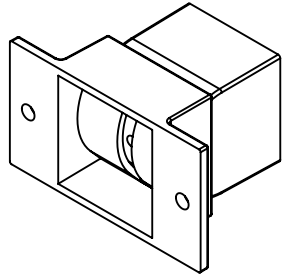


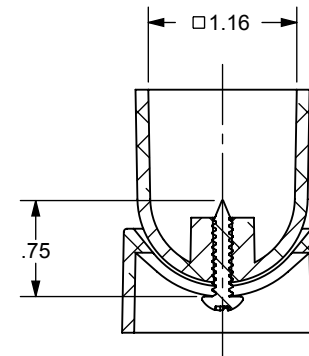
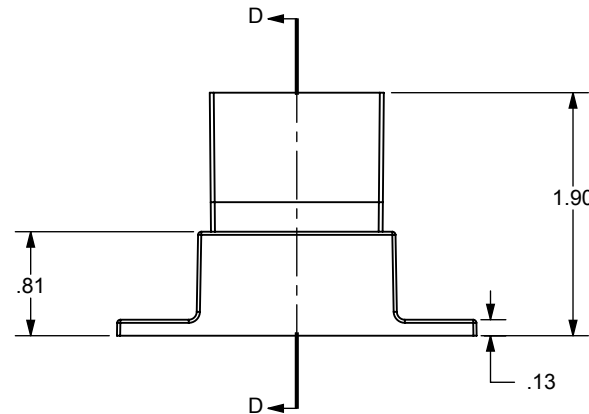
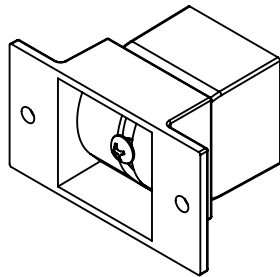
PART #	ASSEMBLED WITH SCREW	FINISH	COLOR	L*	a*	b*	G*
NW6075-SBL	NO	SANDBLASTED	-	-	-	-	-
NW6075-BK	YES	POWDER COAT	BLACK	24	0	0	35
NW6075-WH	YES	POWDER COAT	WHITE	95	-1.4	1.5	80
NW6075-BZ	YES	POWDER COAT	BRONZE	34	0.5	2.1	15
NW6075-BZ2	YES	POWDER COAT	BRONZE 2	36	0.7	3.5	58

REVISIONS				
ECR/DCR	REV.	DESCRIPTION	DATE	APPD.
-	-	INITIAL RELEASE	10/18/12	-

NW6075-SBL



OR



SECTION D-D
SCALE 1 : 1.5

3	SEE TABLE	#8 X .75" SS PHILLIPS PAN HEAD SHEET METAL SCREW
2	1	SWIVEL CUP
1	1	WALL MOUNT SWIVEL BRACKET
ITEM NO.	QTY. REQ'D	DESCRIPTION

NOTES:

- PART TO HAVE A NON-ABRASIVE FINISH.
- PART TO HAVE MIN. DRAFT ANGLE AS TOOLING REQUIRES.
- ANY AND ALL CHANGES TO MATERIAL OR FINISH MUST BE APPROVED BY NWI.
- ALL DIAMETERS TO BE CONCENTRIC WITHIN .005 UNLESS OTHERWISE SPECIFIED.
- ALL CORNERS TO BE .015 MAX R OR CHAMFER OR OTHERWISE NOTED.
- ALL DIMENSIONS ARE FINISHED PART DIMENSIONS.
- POWDERCOAT FINISH TO BE INTERPON 600 OR NWI APPROVED EQUIVALENT.

PROPRIETARY AND CONFIDENTIAL

THE INFORMATION CONTAINED IN THIS DRAWING IS THE SOLE PROPERTY OF NATIONWIDE INDUSTRIES. ANY REPRODUCTION IN PART OR AS A WHOLE WITHOUT THE WRITTEN PERMISSION OF NATIONWIDE INDUSTRIES IS PROHIBITED.

DIMENSIONS ARE IN INCHES
TOLERANCES:
FRACTIONAL: ±1/16"
ANGULAR: MACH ±1° BEND ±1°
TWO PLACE DECIMAL ±0.01
THREE PLACE DECIMAL ±0.005

MATERIAL
A360 CAST ALUM.
FINISH
SEE TABLE

DO NOT SCALE DRAWING

	NAME	DATE
DRAWN	AMM	10/18/12
CHECKED		
ENG APPR.		
MEG APPR.		
Q.A.		

COMMENTS:



**ADJ DUAL FLANGE
WALL MOUNT BRACKET**

SIZE A	DWG. NO. CS--NW6075	REV. --
SCALE: 2:3		WEIGHT: 0.166 LB.
		SHEET 1 OF 1