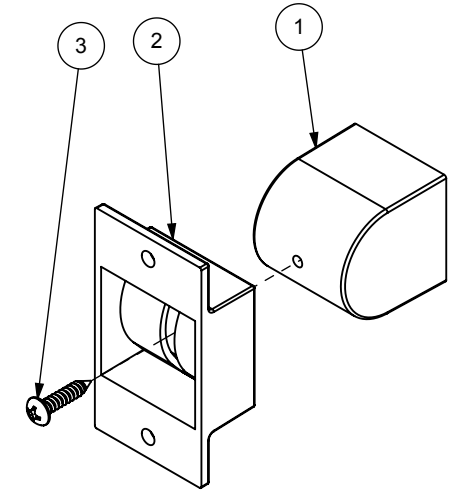
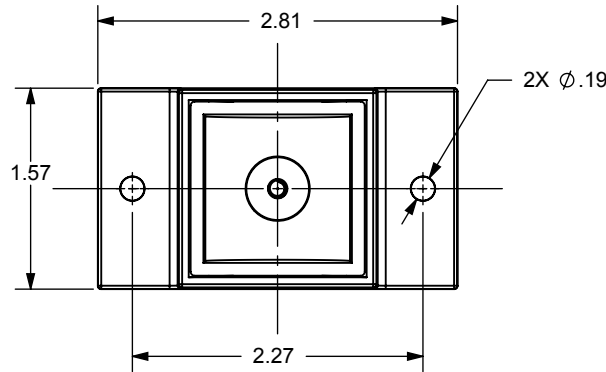
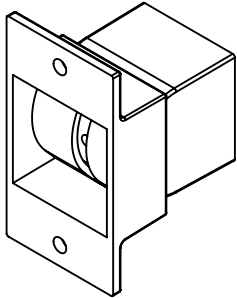


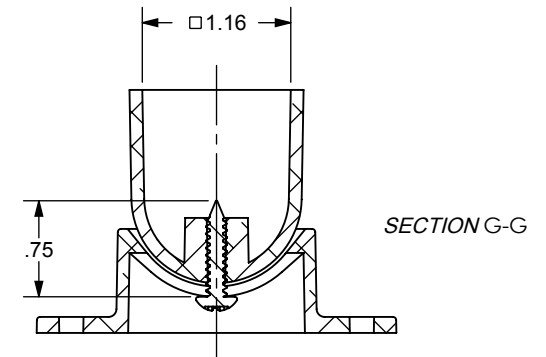
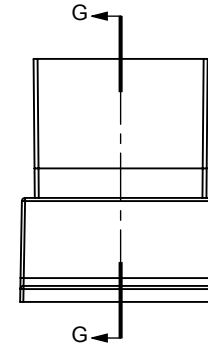
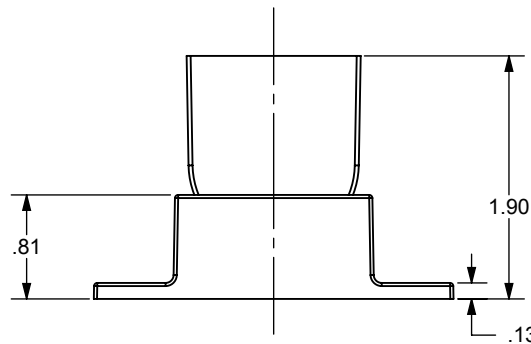
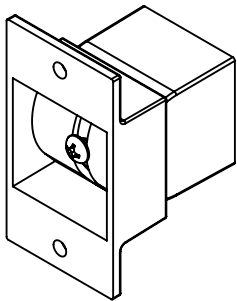
PART #	ASSEMBLED WITH SCREW	FINISH	COLOR	L*	a*	b*	G*
NW6075V-SBL	NO	SANDBLASTED	-	-	-	-	-
NW6075V-BK	YES	POWDER COAT	BLACK	24	0	0	35
NW6075V-WH	YES	POWDER COAT	WHITE	95	-1.4	1.5	80
NW6075V-BZ	YES	POWDER COAT	BRONZE	34	0.5	2.1	15
NW6075V-BZ2	YES	POWDER COAT	BRONZE 2	36	0.7	3.5	58

REVISIONS				
ECR/DCR	REV.	DESCRIPTION	DATE	APPD.
-	-	INITIAL RELEASE	10/18/12	-

NW6075V-SBL



OR



- NOTES:
- PART TO HAVE A NON-ABRASIVE FINISH.
 - PART TO HAVE MIN. DRAFT ANGLE AS TOOLING REQUIRES.
 - ANY AND ALL CHANGES TO MATERIAL OR FINISH MUST BE APPROVED BY NWI.
 - ALL DIAMETERS TO BE CONCENTRIC WITHIN .005 UNLESS OTHERWISE SPECIFIED.
 - ALL CORNERS TO BE .015 MAX R OR CHAMFER OR OTHERWISE NOTED.
 - ALL DIMENSIONS ARE FINISHED PART DIMENSIONS.
 - POWDERCOAT FINISH TO BE INTERPON 600 OR NWI APPROVED EQUIVALENT.

3	SEE TABLE	#8 X .75" SS PHILLIPS PAN HEAD SHEET METAL SCREW
2	1	WALL MOUNT HOR. ADJ. BRACKET
1	1	SWIVEL CUP
ITEM NO.	QTY. REQ'D	DESCRIPTION

DIMENSIONS ARE IN INCHES TOLERANCES: FRACTIONAL: ±1/16" ANGULAR: MACH ±1° BEND ±1° TWO PLACE DECIMAL ±0.01 THREE PLACE DECIMAL ±0.005		NAME AMM	DATE 10/18/12	
MATERIAL A360 CAST ALUM.		Q.A.	COMMENTS: SUPERSEDES NW6075H	
FINISH SEE TABLE		SCALE: 2:3		ADJ DUAL FLANGE WALL MOUNT BRACKET SIZE DWG. NO. CS--NW6075V REV. - WEIGHT: 0.166 LB. SHEET 1 OF 1

PROPRIETARY AND CONFIDENTIAL
 THE INFORMATION CONTAINED IN THIS DRAWING IS THE SOLE PROPERTY OF NATIONWIDE INDUSTRIES. ANY REPRODUCTION IN PART OR AS A WHOLE WITHOUT THE WRITTEN PERMISSION OF NATIONWIDE INDUSTRIES IS PROHIBITED.

DO NOT SCALE DRAWING