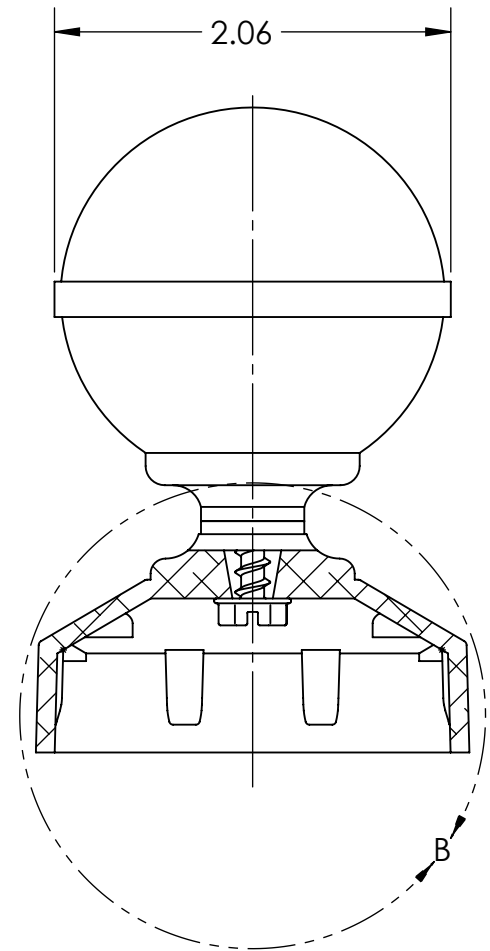
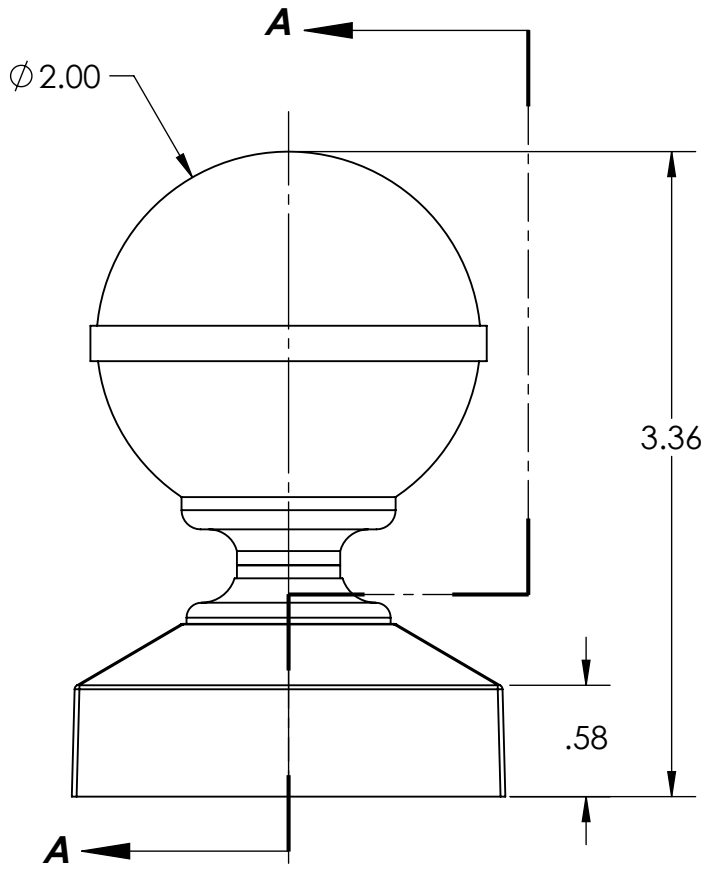
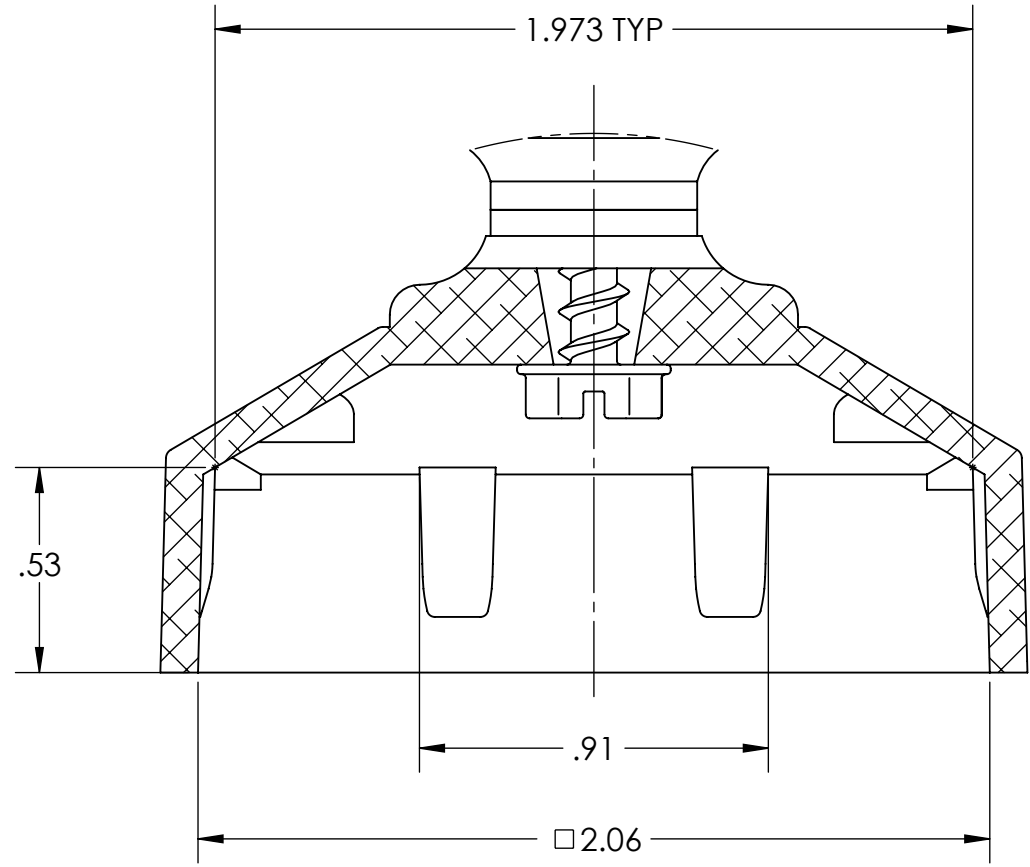


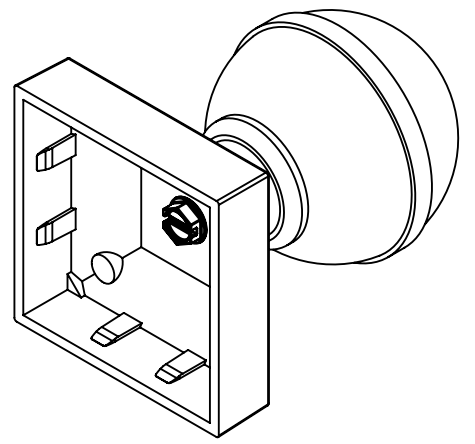
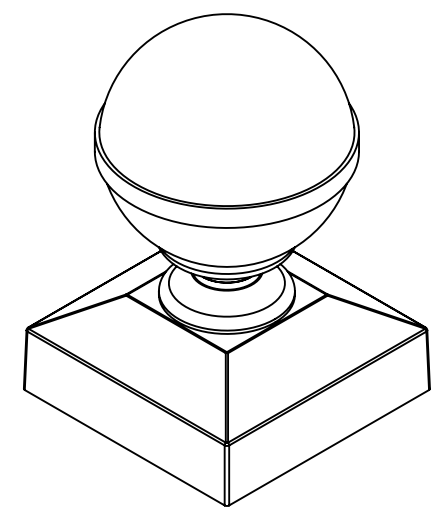
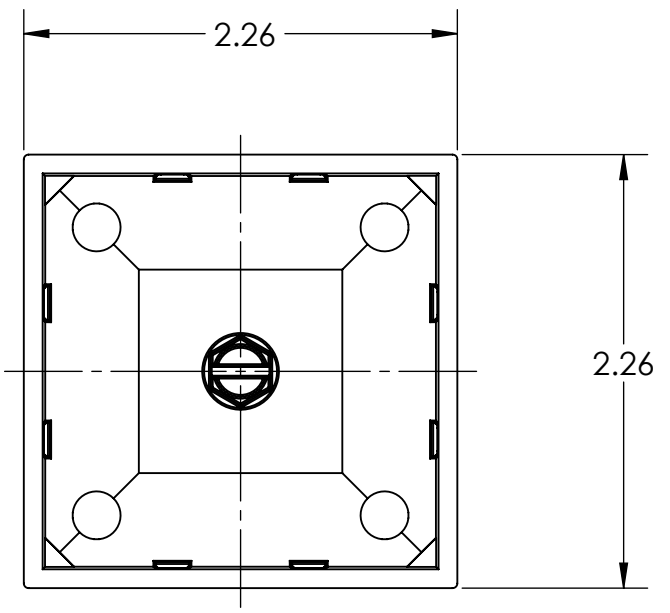
REVISIONS				
ECR/DCR	REV.	DESCRIPTION	DATE	APPD.
-	-	INITIAL RELEASE	5/23/13	-



SECTION A-A



**DETAIL B
SCALE 2 : 1**



PROPRIETARY AND CONFIDENTIAL
 THE INFORMATION CONTAINED IN THIS DRAWING IS THE SOLE PROPERTY OF NATIONWIDE INDUSTRIES. ANY REPRODUCTION IN PART OR AS A WHOLE WITHOUT THE WRITTEN PERMISSION OF NATIONWIDE INDUSTRIES IS PROHIBITED.

DIMENSIONS ARE IN INCHES
 TOLERANCES:
 FRACTIONAL ±1/16"
 ANGULAR: MACH ±1° BEND ±1°
 TWO PLACE DECIMAL ±0.01
 THREE PLACE DECIMAL ±0.005

MATERIAL	A360 CAST ALUM	
FINISH	MILL / POWDERCOAT	
DO NOT SCALE DRAWING		

	NAME	DATE
DRAWN	AMM	5/23/13
CHECKED	-	-
ENG APPR.		
MFG APPR.		
Q.A.		



**2" LIGHT WEIGHT
BALL CAP**

SIZE	DWG. NO.	REV.
B	CS--NW6166	-
SCALE:1:1	WEIGHT: LB.	SHEET 1 OF 1