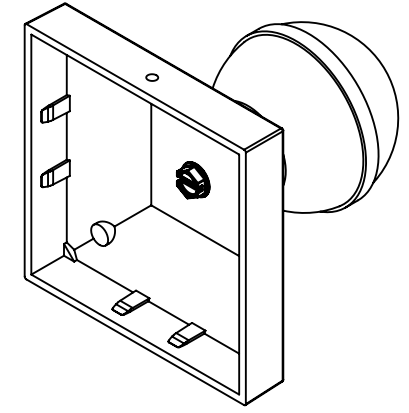
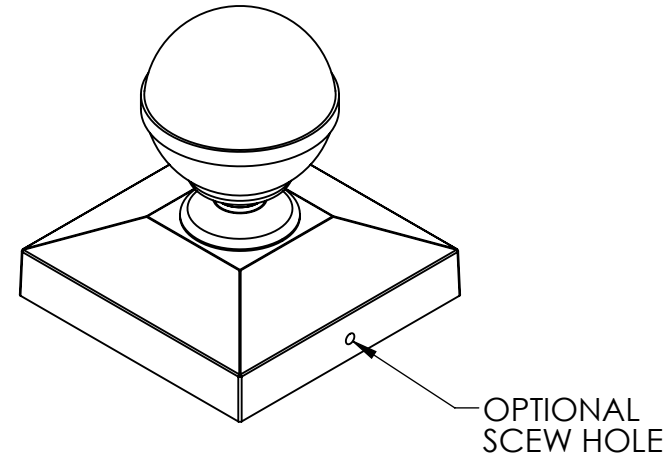
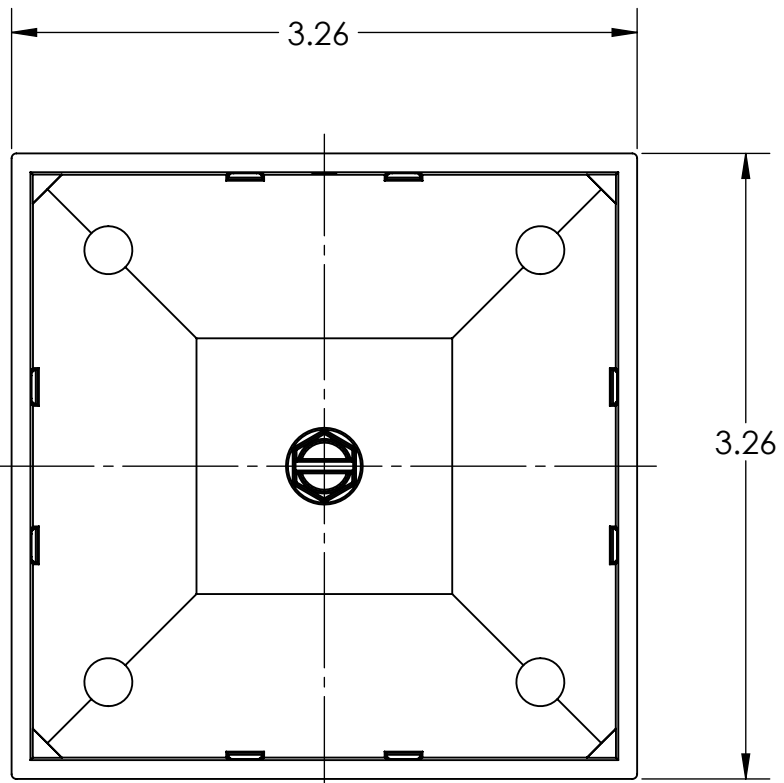
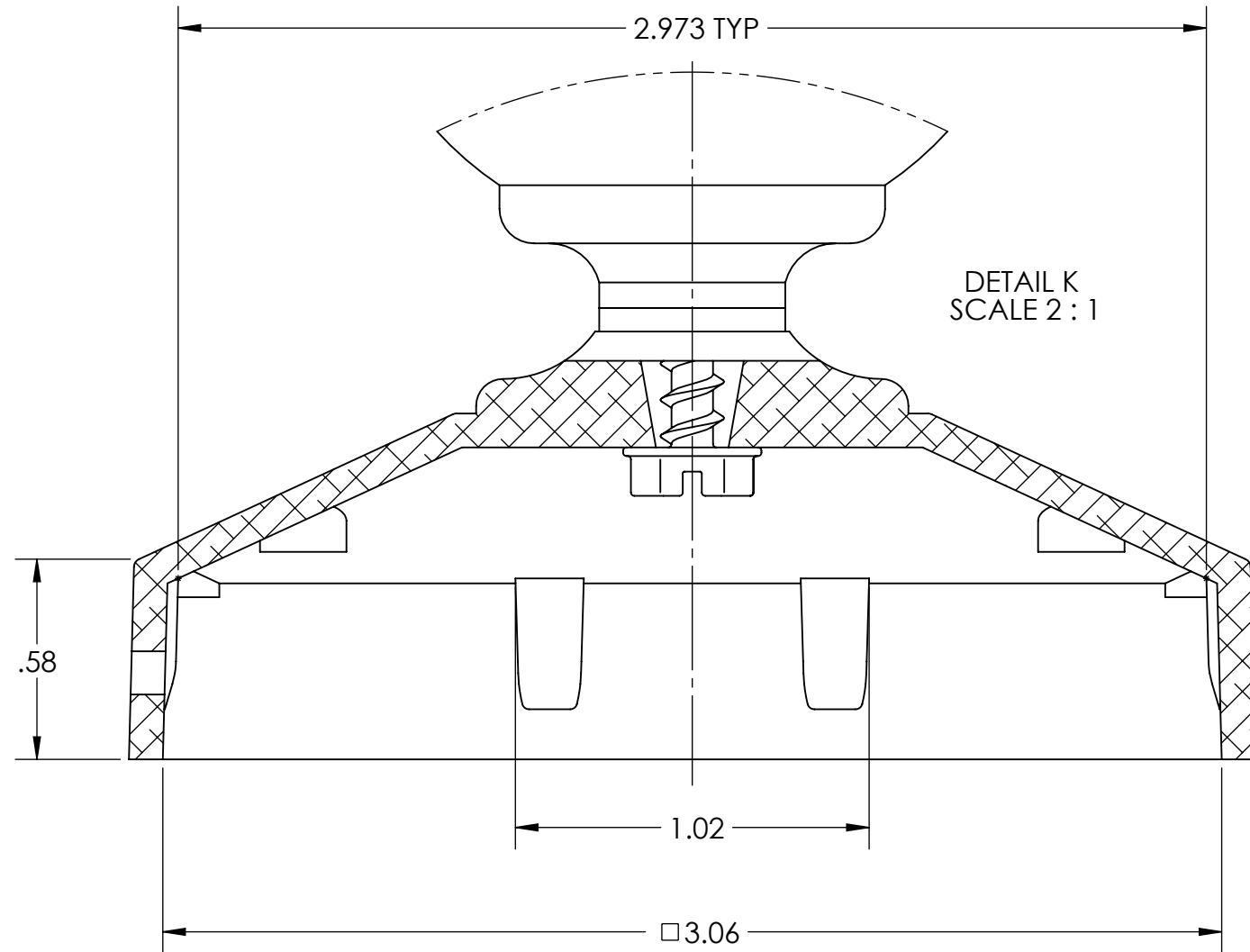
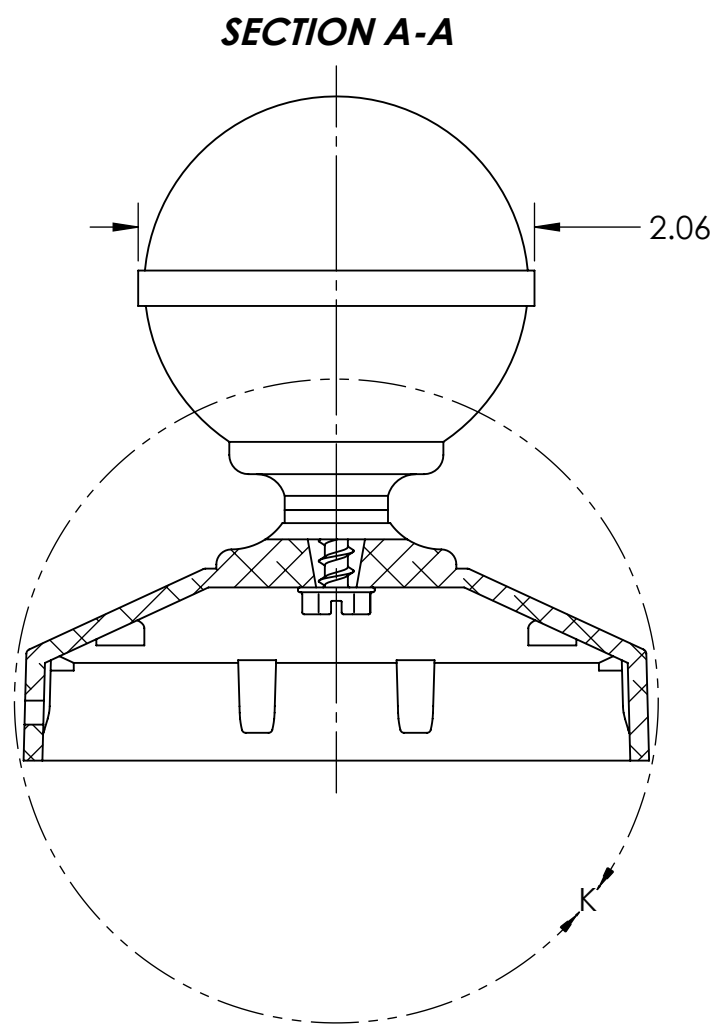
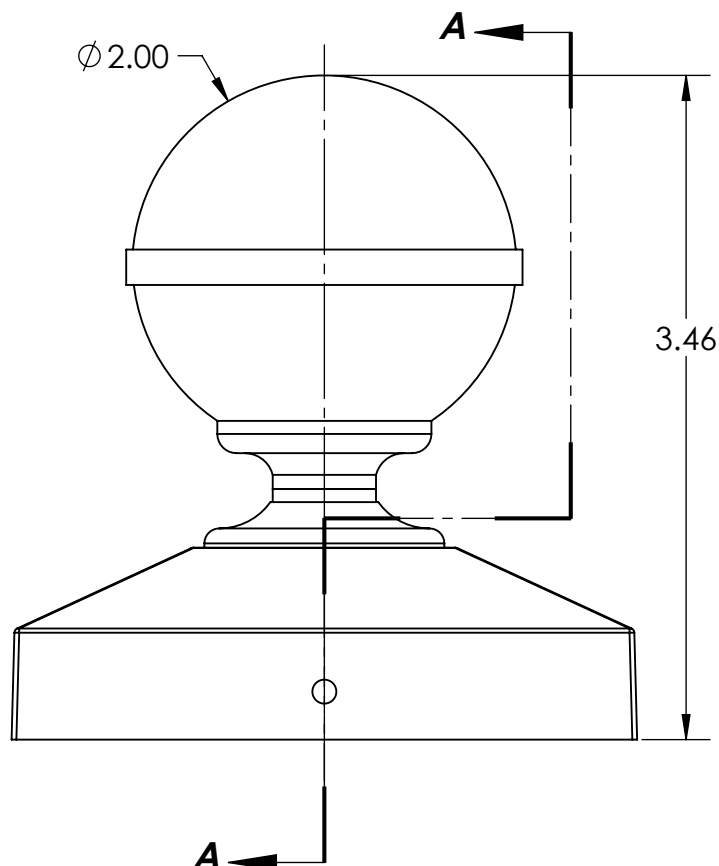


REVISIONS				
ECR/DCR	REV.	DESCRIPTION	DATE	APPD.
-	-	INITIAL RELEASE	5/23/13	-



PROPRIETARY AND CONFIDENTIAL
 THE INFORMATION CONTAINED IN THIS DRAWING IS THE SOLE PROPERTY OF NATIONWIDE INDUSTRIES. ANY REPRODUCTION IN PART OR AS A WHOLE WITHOUT THE WRITTEN PERMISSION OF NATIONWIDE INDUSTRIES IS PROHIBITED.

DIMENSIONS ARE IN INCHES		NAME	DATE
TOLERANCES:		DRAWN	5/23/13
FRACTIONAL ±1/16"		CHECKED	
ANGULAR: MACH ±1° BEND ±1°		ENG. APPR.	
TWO PLACE DECIMAL ±0.01		MFG APPR.	
THREE PLACE DECIMAL ±0.005		Q.A.	
MATERIAL		COMMENTS:	
A360 CAST ALUM			
FINISH			
MILL / POWDERCOAT			
DO NOT SCALE DRAWING			



3" LIGHT WEIGHT BALL CAP		
SIZE	DWG. NO.	REV.
B	CS--NW6191	-
SCALE: 1:1	WEIGHT: LB.	SHEET 1 OF 1