

PART #	HOLE	TABS	FINISH	COLOR	FIG #
NW6231-SBL	NO	NO	SANDBLASTED	MILL	1
NW6231-BK	NO	NO	POWDER COAT	BLACK	1
NW6231-WH	NO	NO	POWDER COAT	WHITE	1
NW6231-BZ	NO	NO	POWDER COAT	BRONZE	1
NW6231-BZ2	NO	NO	POWDER COAT	BRONZE 2	1
NW6231H-SBL	YES	NO	SANDBLASTED	MILL	2
NW6231H-BK	YES	NO	POWDER COAT	BLACK	2
NW6231H-WH	YES	NO	POWDER COAT	WHITE	2
NW6231H-BZ	YES	NO	POWDER COAT	BRONZE	2
NW6231H-BZ2	YES	NO	POWDER COAT	BRONZE 2	2
NW6231PFTS-SBL	NO	YES	SANDBLASTED	MILL	3
NW6231PFTS-BK	NO	YES	POWDER COAT	BLACK	3
NW6231PFTS-WH	NO	YES	POWDER COAT	WHITE	3
NW6231PFTS-BZ	NO	YES	POWDER COAT	BRONZE	3
NW6231PFTS-BZ2	NO	YES	POWDER COAT	BRONZE 2	3

ECR/DCR		REV.	REVISIONS		DATE	APPD
-	-	-	DESCRIPTION	INITIAL RELEASE	5/11/15	-

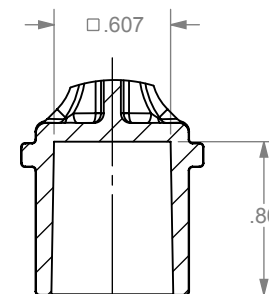
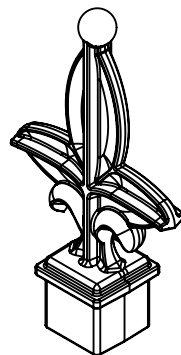


FIG #1

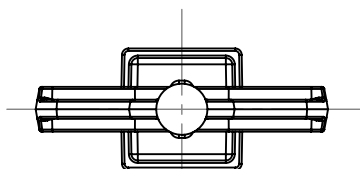


FIG #2

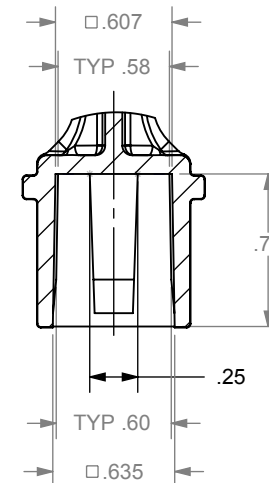
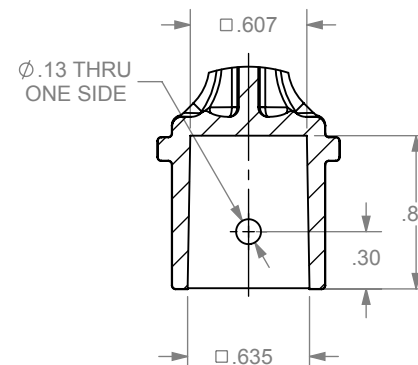
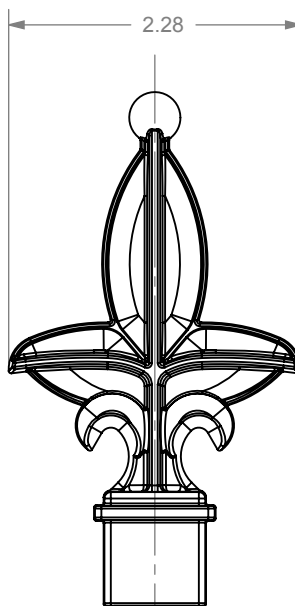
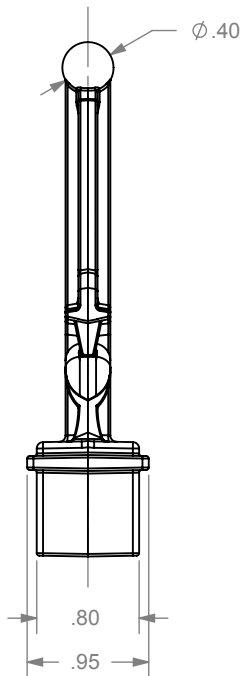
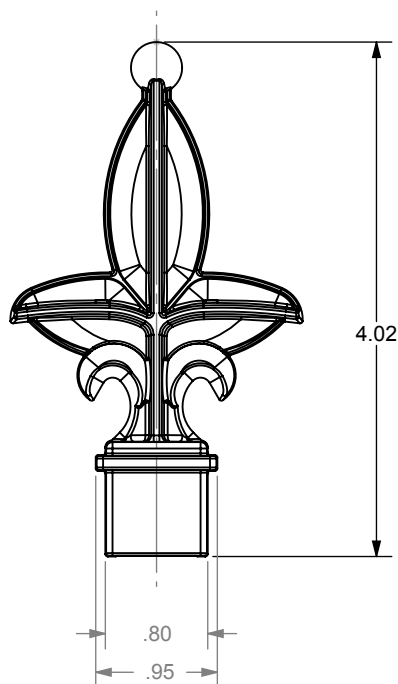


FIG #3



DIMENSIONS ARE IN INCHES
TOLERANCES:
FRACTIONAL: ±1/16"
ANGULAR: ±MACH ±1° BEND ±1°
TWO PLACE DECIMAL ±0.01
THREE PLACE DECIMAL ±0.005

MATERIAL
A360 ALUMINUM
FINISH
SEE TABLE

DO NOT SCALE DRAWING

PROPRIETARY AND CONFIDENTIAL
THE INFORMATION CONTAINED IN THIS DRAWING IS THE SOLE PROPERTY OF NATIONWIDE INDUSTRIES. ANY REPRODUCTION IN PART OR AS A WHOLE WITHOUT THE WRITTEN PERMISSION OF NATIONWIDE INDUSTRIES IS PROHIBITED.

NAME	DATE
DRAWN EET	5-11-15
CHECKED	
ENG APPR.	
MFG APPR.	

COMMENTS:
P/L: 11-116



FLEUR DE LIS
5/8"
FINIAL

SIZE	DWG. NO.	REV.
A	CS--NW6231	-

SCALE: 2:3 WEIGHT: SHEET 1 OF 1