

PART #	COLOR
NWSS-HD-SC-BK	BLACK
NWSS-HD-SC-WH	WHITE

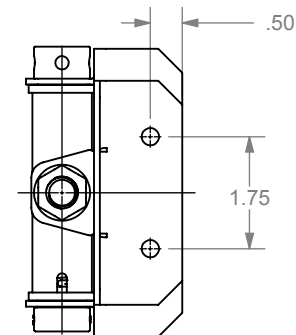
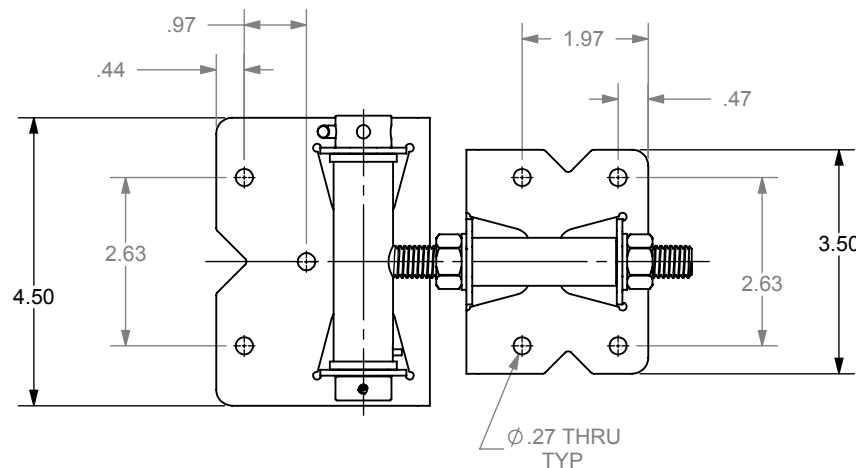
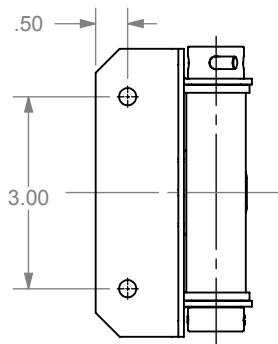
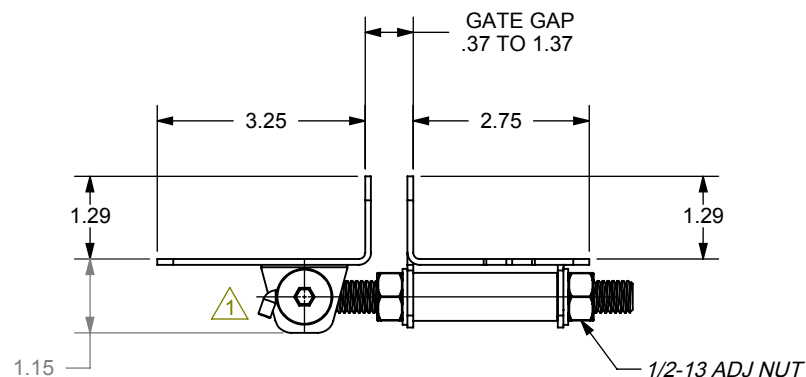
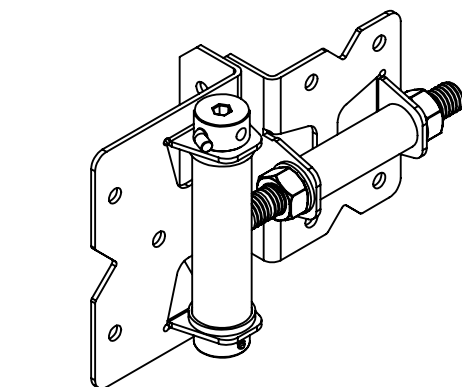
ECR/DCR	REV.	REVISIONS		DATE	APPD
		DESCRIPTION			
-	-	INITIAL RELEASE		--	-
ECR-0599	1	REPLACE ADJ PIN WITH NEW VERSION AND ADD INSTRUCTION CARD		9/23/11	CGS

### PACKAGING INSTRUCTIONS

#### EACH SET TO BE POLYBAGGED CONTAINING:

- (2) HINGE ASSEMBLIES (WITHOUT ADJUSTMENT PIN)  
INDIVIDUALLY POLYBAGGED
- HARDWARE KIT POLYBAGGED CONTAINING:  
(22) #14 x 3/4" LG. PAN HD PH SCREW  
(1) 1/4" HEX ALLEN WRENCH  
(2) ADJUSTMENT PIN  
(1) INSTRUCTION CARD

EACH POLYBAG TO BE LABELED WITH THE PART NUMBER



#### NOTES:

- PART TO HAVE A NON-ABRASIVE FINISH.
- PART TO HAVE MIN. DRAFT ANGLE AS TOOLING REQUIRES.
- ANY AND ALL CHANGES TO MATERIAL OR FINISH MUST BE APPROVED BY NWT.
- ALL DIAMETERS TO BE CONCENTRIC WITHIN .005 UNLESS OTHERWISE SPECIFIED.
- ALL CORNERS TO BE .015 MAX R OR CHAMFER OR OTHERWISE NOTED.
- ALL DIMENSIONS ARE FINISHED PART DIMENSIONS.
- POWDERCOAT FINISH TO BE INTERPON 600 OR NWT APPROVED EQUIVALENT.
- NO FLASH ALLOWED.
- REMOVE ALL BURRS, BREAK CORNERS, AND SHARP EDGES.

DIMENSIONS ARE IN INCHES  
TOLERANCES:  
FRACTIONAL  $\pm 1/16"$   
ANGULAR: MACH  $\pm 1^\circ$  BEND  $\pm 1^\circ$   
TWO PLACE DECIMAL  $\pm 0.01$   
THREE PLACE DECIMAL  $\pm 0.005$

PROPRIETARY AND CONFIDENTIAL  
THE INFORMATION CONTAINED IN THIS  
DRAWING IS THE SOLE PROPERTY OF  
NATIONWIDE INDUSTRIES. ANY  
REPRODUCTION IN PART OR AS A WHOLE  
WITHOUT THE WRITTEN PERMISSION OF  
NATIONWIDE INDUSTRIES IS PROHIBITED.



### HEAVY DUTY SS ADJUSTABLE SELF CLOSING HINGE

SIZE	DWG. NO.	REV.
A	CS--NWSS-HD-SC	1
SCALE: 1:3	WEIGHT: LB.	SHEET 1 OF 1