

ZND

- ▶ TEMPORARY FENCING
- ▶ GATES
- ▶ BARRIERS
- ▶ STORAGE AND TRANSPORT
- ▶ STABILIZER SYSTEMS
- ▶ ACCESSORIES

www.znd.com



**Stronger
Safer
Smarter**

**2024
CATALOG**

ZND

CONTENTS	2
Meeting the Toughest Demands	3
TEMPORARY FENCING	4
Choosing the Right Panel for You	5
ST612	6
ST812	7
RT612	8
RT812	9
GATES	10
Pedestrian	10
Vehicle	10
Single Sliding	11
Double Sliding	11
BARRIERS	12
Choose the Barrier Style	13
Fixed Leg Barrier Lightweight	14
Fixed Leg Barrier Heavy Duty	15
Bar Barrier Lightweight	16
Bar Barrier Heavy Duty	17
STORAGE AND TRANSPORT	18
Stillage	18
STABILIZER SYSTEMS	20
ACCESSORIES	22

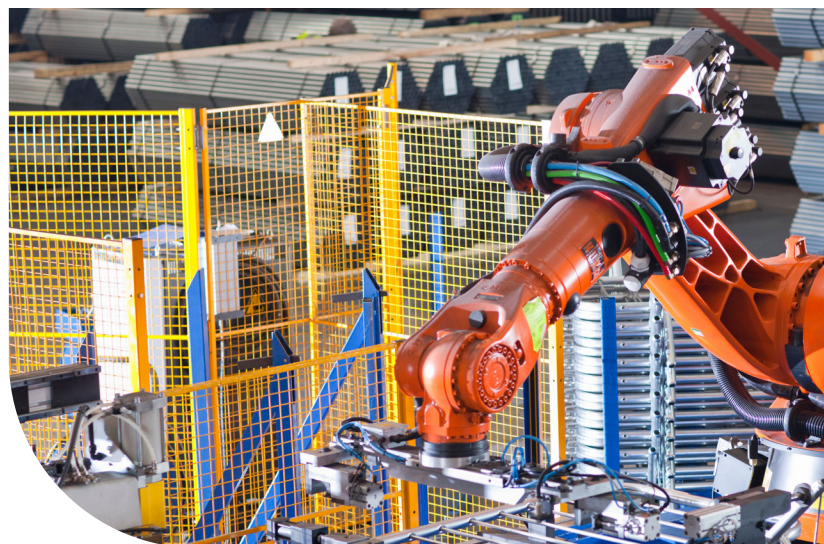


Please note, all dimensions and weights are correct at the time of print, however they are subject to change. Please refer to the customer portal for the latest information.



The ZND Difference

- Innovative designs are longer lasting and more durable than other products on the market.
- The automated manufacturing process ensures a consistent, high-quality product you can rely on.
- Our temporary fencing solutions are safer for installers and the crowds they protect because they resist rust, are simple to install, and are in one piece without obstructions.
- We can customize labels, privacy, and wind screens that extend the branding experience for our customers.
- With two geographically ideal manufacturing facilities, we can produce and ship products quickly to the market.





Meeting the Toughest Demands

ZND is the global market leader in the manufacturing and supply of high-quality temporary fencing, pedestrian barriers, and accessories.

Established in 1965 as a wire drawing business, ZND has since pioneered many manufacturing practices related to fencing and barrier solutions — making us one of the fastest growing temporary fence manufacturers in the world.

Our designs have direct and immediate benefits for our customers. ZND is unique through superior design, engineering, automation, and world-class service. Our products have been engineered to be compatible with current products available in the US and to be easily integrated into a company's current fleet and without disruption.

Temporary fencing is a necessity for our customers in the construction and event management industries. Our solution-based systems are stronger, safer, and smarter. Through superior design, engineering, and automation, ZND's welded wire mesh — using our SmartWeld process — means customers have a superior alternative to chain link.

Temporary Fencing

Wide variety of specification options:

- Frame styles
- Mesh types
- Wire diameters
- Corporate identity labels

Extensive range of accessories:

- Couplers & Spanners
- Stands & Weights
- Stabilizing Systems
- Pedestrian & Vehicle Gates
- Panel Extensions



SmartWeld[®]

Temporary fencing has proven to be extremely popular with our customers in the construction and event management industries for use to direct the public away from construction hazards and towards secure areas.



COMPREHENSIVE RANGE OF PANELS, DESIGNED AND MANUFACTURED TO THE HIGHEST STANDARDS



WE HAVE THE INSTALLED CAPACITY TO PRODUCE A PANEL EVERY 10 SECONDS IN THE U.S.



ALL OUR TEMPORARY FENCES CAN BE POWDER COATED IN A COLOR OF YOUR CHOICE



MADE TO ORDER AND DELIVERED DIRECTLY TO YOUR SITE MEETING ALL SITE REQUIREMENTS



SCAN QR CODE FOR MORE PRODUCT INFORMATION

Choosing the right panel for you

Our latest panels are available in all varieties.
Find the right panel to suit your requirements in **5 simple steps**.

1 Choose the Frame Style



Square Top
Horizontal Tube Diameter: 1.375"
Vertical Tube Diameter: 1.375"



Round Top
Horizontal Tube Diameter: 1.375"
Vertical Tube Diameter: 1.375"

2 Choose the Height

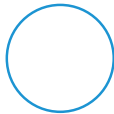


6 Foot
12' x 6'



8 Foot
12' x 8'

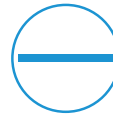
3 Choose the Support Tube Style



None



Vertical
Support Tube
Diameter: 1.375"



Horizontal
Support Tube
Diameter: 1.375"



Vertical & Horizontal
Support Tube
Diameter: 1.375"

4 Choose the Weight



Lightweight
Horizontal Wire Gauge: 3.2mm dia (8ga)
Vertical Wire Gauge: 2.2mm dia (11ga)
Tube Gauge: 20ga



Heavy Duty
Horizontal Wire Gauge: 3.2mm dia (8ga)
Vertical Wire Gauge: 3.2mm dia (8ga)
Tube Gauge: 17ga

5 Choose the Mesh Style



Anti-Climb
Vertical Pitch: 2.03"
Horizontal Pitch: 7.66" (6ft) 8.44" (8ft)



Easy Carry
Vertical Pitch: 4.0"
Horizontal Pitch: 7.66" (6ft)



TEMPORARY FENCING

TEMPORARY FENCING ST612 PANELS

ST612

Our ST612 panel has vertical and/or horizontal tube diameters of 1-3/8" (1.375") and is available with Standard Anti-Climb or Easy Carry mesh. Corner plates are standard on all panels.



Illustration shows ST612VH Heavy Duty panels

Panel Name	Stock Code	Dimension (Feet and inches)	Weight (Lbs)	Finish
ST612.LW - Easy Carry	07071205	12' x 6'	27.8	Pre-Galvanized
ST612V.LW - Easy Carry	07071220	12' x 6'	30.4	Pre-Galvanized
ST612V.LW - Anti-Climb	07071225	12' x 6'	35	Pre-Galvanized
ST612VH.LW - Easy Carry	07071250	12' x 6'	41	Pre-Galvanized
ST612VH.LW - Anti-Climb	07071255	12' x 6'	36.4	Pre-Galvanized
ST612 - Easy Carry	07071230	12' x 6'	40.5	Pre-Galvanized
ST612V - Easy Carry	07071235	12' x 6'	44.5	Pre-Galvanized
ST612V - Anti-Climb	07072215	12' x 6'	50.7	Pre-Galvanized
ST612H - Anti-Climb	07072225	12' x 6'	55.3	Pre-Galvanized
ST612VH - Easy Carry	07071245	12' x 6'	53.1	Pre-Galvanized
ST612VH - Anti-Climb	07072235	12' x 6'	59.3	Pre-Galvanized



SCAN QR CODE
FOR MORE PRODUCT INFORMATION



Call our sales team today 704-981-8660 Email sales@znd.com

ST812

Our ST812 panel has vertical and/or horizontal tube diameters of 1-3/8" (1.375") and is available with Standard Anti-Climb mesh. Corner plates are standard on all panels.



Illustration shows ST812VH Heavy Duty panels

Panel Name	Stock Code	Dimension (Feet and inches)	Weight (Lbs)	Finish
ST812 - Anti-Climb	07072405	12' x 8'	56.4	Pre-Galvanized
ST812V.LW - Anti-Climb	07071415	12' x 8'	39.7	Pre-Galvanized
ST812V - Anti-Climb	07072415	12' x 8'	61.9	Pre-Galvanized
ST812H - Anti-Climb	07072425	12' x 8'	65	Pre-Galvanized
ST812VH - Anti-Climb	07072435	12' x 8'	70	Pre-Galvanized



**SCAN QR CODE
FOR MORE PRODUCT INFORMATION**



TEMPORARY FENCING

TEMPORARY FENCING RT612 PANELS

RT612

Our RT612 panel has vertical and/or horizontal tube diameters of 1-3/8" (1.375") and is available with Standard Anti-Climb mesh. Corner plates are standard on all panels.



Illustration shows RT612VH Heavy Duty panels

Panel Name	Stock Code	Dimension (Feet and inches)	Weight (Lbs)	Finish
RT612 - Anti-Climb	07073205	12' x 6'	45.8	Pre-Galvanized
RT612V - Anti-Climb	07073215	12' x 6'	49.8	Pre-Galvanized
RT612H - Anti-Climb	07073225	12' x 6'	54.4	Pre-Galvanized
RT612VH - Anti-Climb	07073235	12' x 6'	58.4	Pre-Galvanized



SCAN QR CODE
FOR MORE PRODUCT INFORMATION



Call our sales team today 704-981-8660 Email sales@znd.com

RT812

Our RT812 panel has vertical and/or horizontal tube diameters of 1-3/8" (1.375") and is available with Standard Anti-Climb mesh. Corner plates are standard on all panels.

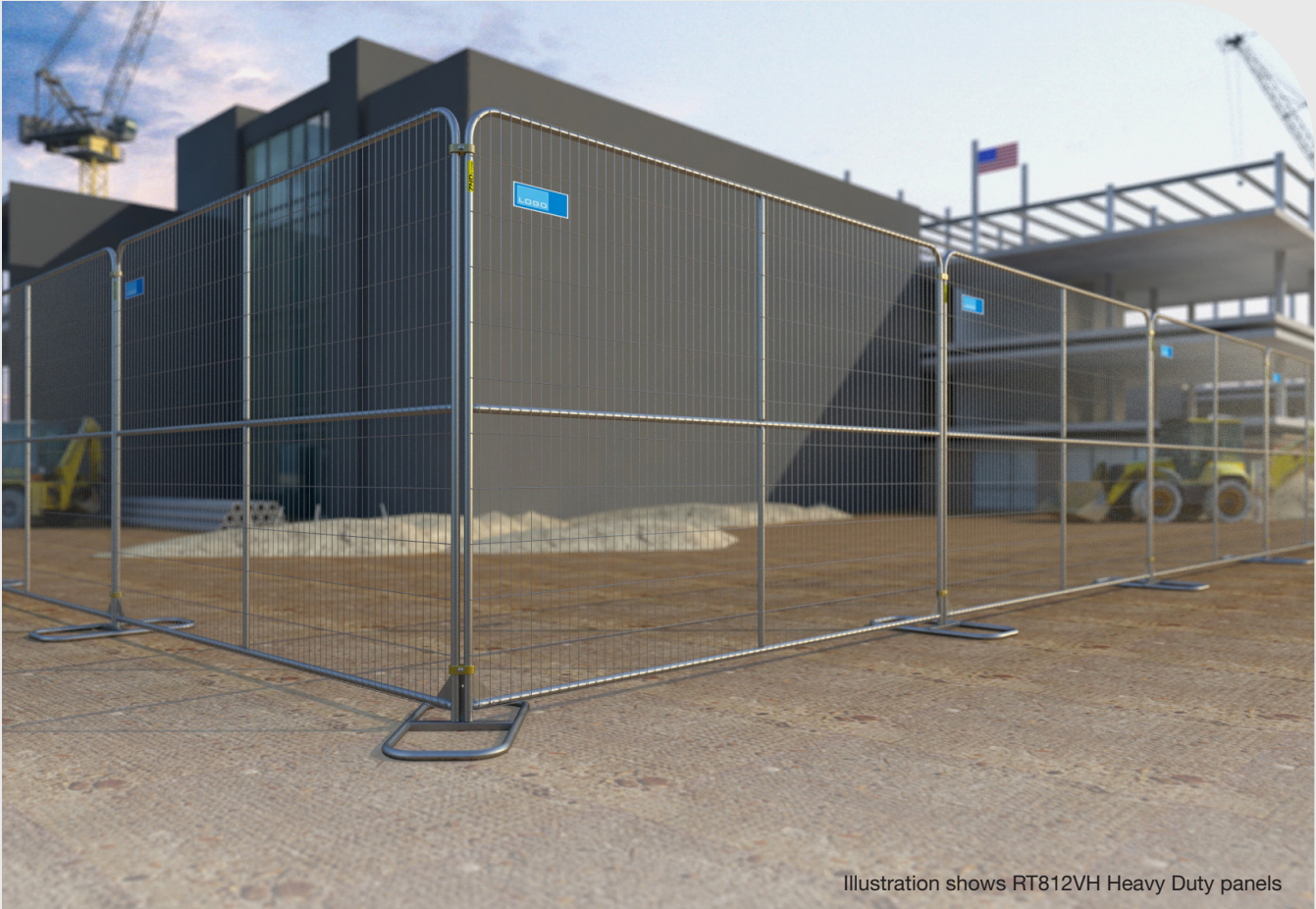


Illustration shows RT812VH Heavy Duty panels

Panel Name	Stock Code	Dimension (Feet and inches)	Weight (Lbs)	Finish
RT812 - Anti-Climb	07073405	12' x 8'	55.1	Pre-Galvanized
RT812V - Anti-Climb	07073415	12' x 8'	60.6	Pre-Galvanized
RT812H - Anti-Climb	07073425	12' x 8'	63.7	Pre-Galvanized
RT812VH - Anti-Climb	07073435	12' x 8'	69.2	Pre-Galvanized



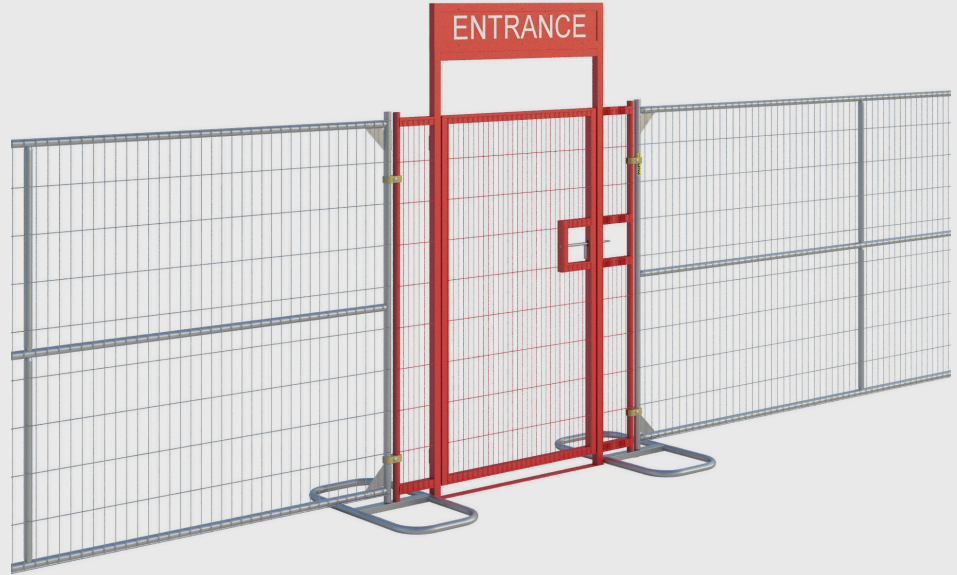
**SCAN QR CODE
FOR MORE PRODUCT INFORMATION**

PRODUCT CODE 07551610

Pedestrian Gate 6ft Anti-Climb

This sturdy gate holds up to constant traffic entering and exiting a site. Its powder coated red, allowing the entrance/exit to be easily seen from a distance, and can be padlocked for extra security.

- **Dimension:** 5'-1" x 7'-9.5"
- **Weight:** 108 lbs
- **Finish:** Pre-Galvanized, Powder Coated



PRODUCT CODE 08052055

Vehicle Gate Conversion Kit

This kit contains everything you need to convert panels into a double swinging vehicle gate. Works with both 6ft and 8ft panels.

- **Weight:** 21.8 lbs
- **Finish:** Galvanized

Accessory needed for conversion

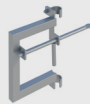
- Gate Wheel Assembly (2 per kit)
- Gate Latch Male Side (1 per kit)
- Gate Latch Female Side (1 per kit)
- Gate Hinge Coupler (4 per kit)



Any panel from ZNDUS can be converted into a set of vehicle gates.



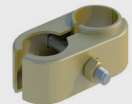
PRODUCT CODE:
09053010
Gate Wheel Assembly



PRODUCT CODE:
09053035
Gate Latch Male Side



PRODUCT CODE:
09053045
Gate Latch Female Side



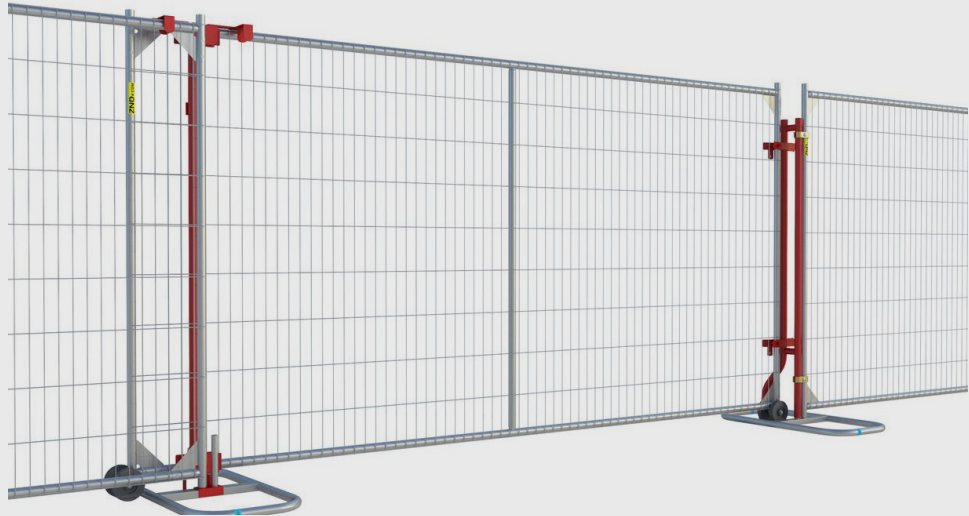
PRODUCT CODE:
09054090
Gate Hinge Coupler

PRODUCT CODE 08051541

Single Sliding Gate Kit

This kit contains everything you need to convert a panel into a sliding gate. Works with both 6ft and 8ft panels.

- **Weight:** 29.5 lbs
- **Finish:** Pre-Galvanized, Powder Coated

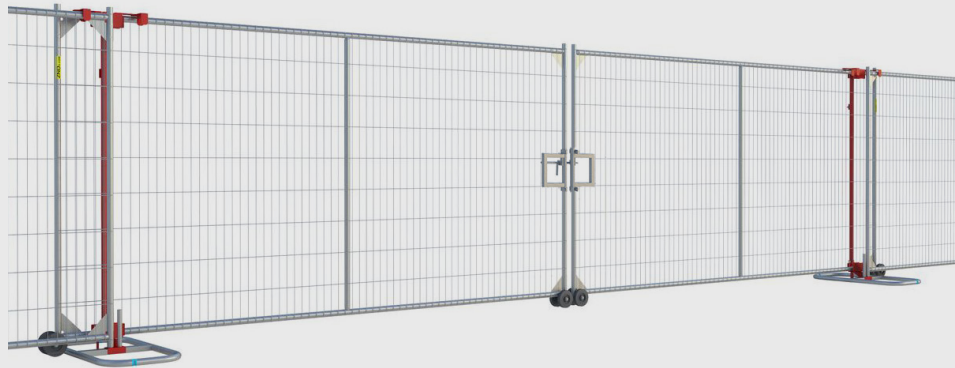


PRODUCT CODE 08051561

Double Sliding Gate Kit

This kit contains everything you need to convert two panels into a double sliding vehicle gate. Works with both 6ft and 8ft panels.

- **Weight:** 34 lbs
- **Finish:** Pre-Galvanized, Powder Coated



SCAN QR CODE
FOR MORE PRODUCT INFORMATION



Pedestrian Barriers



Fixed Leg Barriers

Barriers

Our pedestrian barriers are available in a range of different options, all designed to provide an effective boundary solution. With robust tubular steel frames and safety features to give you the quality and reliability you need.

SmartWeld®

With fixed leg or detachable feet, and a high-quality galvanized appearance that can be colored to match your image, we offer plenty of options to ensure you're getting the right barrier for the job.

Our barriers have a strong tubular frame with vertical infill tubes.

Metal Inert Gas (MIG) welding is used for extra strength and durability and a better long-term appearance.

Our fixed leg option welds the legs to the frame in an offset position and are re-enforced with a support brace. This makes the barriers ideal for stacking and triangulates the front and rear footing adding strength and protection. A plastic insert is fitted into each leg to improve leg strength and protection.

All our barriers can be enhanced with a range of accessories such as company labels and advertising covers.



**SCAN QR CODE
FOR MORE PRODUCT INFORMATION**



Call our sales team today 704-981-8660 [Email sales@znd.com](mailto:sales@znd.com)

Choosing the right barrier for you

Find the right barrier to suit your requirements in **3 simple steps**.

Choose the Barrier Style

Fixed Leg Barrier



Fixed Leg with non-scratch replaceable feet

Bar Barrier

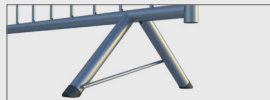


Flatfoot with removeable flat bar feet

Features



Hook and Eye



Leg Strengthening Bar



Name Plate For Company Logo



Swaged End Safety Foot

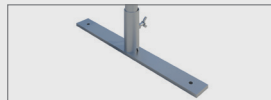
Features



Hook and Eye



Name Plate for Company Logo



Single Flat Foot

Choose Lightweight or Heavy Duty

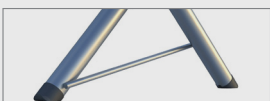
Lightweight

- Lightweight
- Pre-galvanized
- Machine Welded (SmartWeld™)
- Round Design

Heavy Duty

- Sturdy
- Hand-welded
- Hot Dipped Galvanized

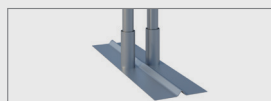
Available Barrier Accessories



Heavy Duty Barrier Fixed Leg Insert



Name Plate For Company Logo



Double Flat Foot



Name Plate for Company Logo



BARRIERS FIXED LEG BARRIER LIGHTWEIGHT

PEDESTRIAN BARRIERS FIXED LEG BARRIER LIGHTWEIGHT

Fixed Leg Barrier Lightweight

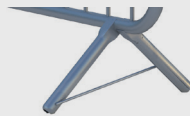


Illustration shows Fixed Leg Barrier Lightweight

Barrier Name	Stock Code	Dimension (Feet and Inches)	Frame Ø (Inch)	Infill (Inch)	Weight (Lbs)	Finish
Fixed Leg Barrier Lightweight	01063012	7'-5" x 3'-7.3"	1.5"	0.47" Diameter 4.4" Aperture	22	Pre-Galvanized



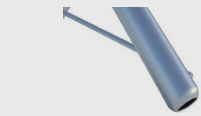
Hook and Eye



Leg Strengthening Bar



Name Plate for Company Logo



Swaged End Safety Foot



SCAN QR CODE FOR MORE PRODUCT INFORMATION

Fixed Leg Barrier Heavy Duty

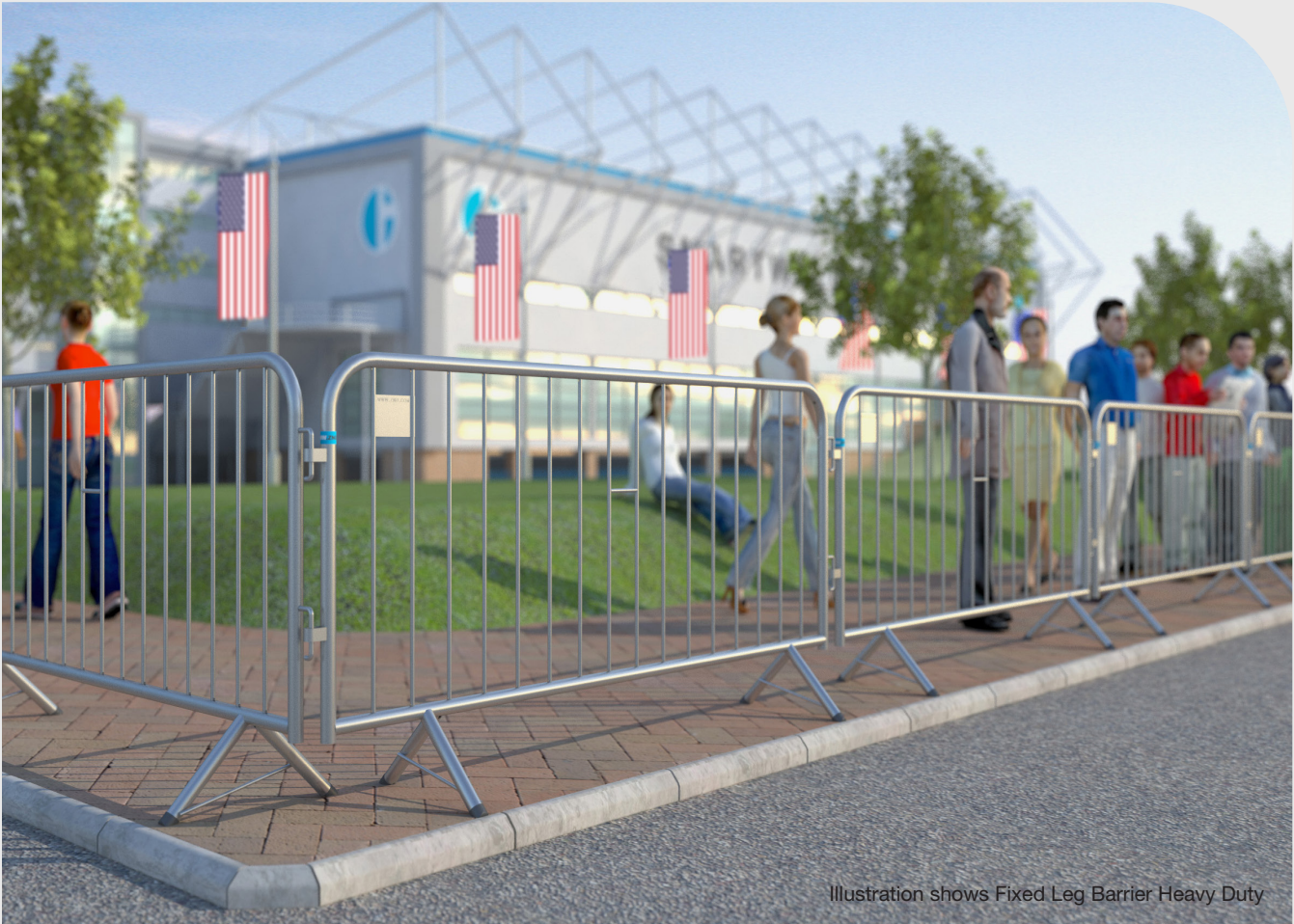


Illustration shows Fixed Leg Barrier Heavy Duty

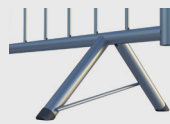
Barrier Name	Stock Code	Dimension (Feet and Inches)	Frame Ø (Inch)	Infill (Inch)	Weight (Lbs)	Finish
Fixed Leg Barrier Heavy Duty	01063201	7'-5.4" x 3'-7.3"	1.5" & 1.5"	0.47" Diameter 4.4" Aperture	34	Hot Dipped Galvanized



Hook and Eye



Name Plate for Company Logo



Heavy Duty Bar Barrier Fixed Leg Insert



Carry Handle



SCAN QR CODE
FOR MORE PRODUCT INFORMATION



BARRIERS BAR BARRIER LIGHTWEIGHT

PEDESTRIAN BARRIERS BAR BARRIER LIGHTWEIGHT

Bar Barrier Lightweight



Illustration shows Bar Barrier Lightweight

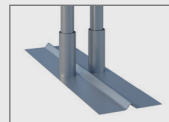
Barrier Name	Stock Code	Dimension (Feet and Inches)	Frame Ø (Inch)	Infill (Inch)	Weight (Lbs)	Finish
Bar Barrier Lightweight	01062012	7'-5" x 3'-7.3"	1.5"	0.47" Diameter 4.4" Aperture	19.2	Pre-Galvanized



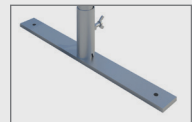
Hook and Eye



Name Plate for Company Logo



Double Flat Foot



Single Flat Foot



SCAN QR CODE FOR MORE PRODUCT INFORMATION

Bar Barrier Heavy Duty



Illustration shows Bar Barrier Heavy Duty

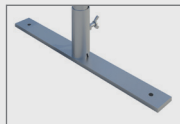
Barrier Name	Stock Code	Dimension (Feet and Inches)	Frame Ø (Inch)	Infill (Inch)	Weight (Lbs)	Finish
Bar Barrier Heavy Duty	01062201	7'-5.4" x 3'-7.3"	1.5" & 1.5"	0.47" Diameter 4.4" Aperture	38.6	Hot Dipped Galvanized



Hook and Eye



Name Plate for Company Logo



Single Flat Foot



Carry Handle



**SCAN QR CODE
FOR MORE PRODUCT INFORMATION**



Storage and Transport

Stillages revolutionize the storage and transportation of stock, maximizing utility of space while also protecting inventory.

Unlike traditional chain link, welded wire mesh panels do not become entangled when stored which, along with the robust frame, allows for ZND panels to be stored safely in dedicated stillages.



SmartWeld®

PRODUCT CODE 09055501

Universal Fence Panel Stillage

This fence panel stillage helps prevent the fence panels from getting damaged when not in use or when being transported, increasing the life of the panel.

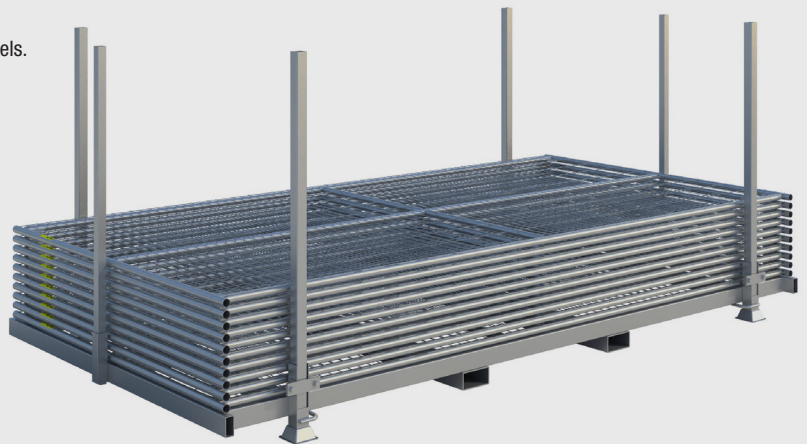
Stillages can be stacked on top of one another, reducing the amount of storage space needed.

The riser posts are removable and can be stored within the stillage frame.

This stillage can be used to carry both square top and round top fences panels.

Holds 35 panels.

- **Dimension:** 12'-4.4" x 6'-4.6" x 5'-1"
- **Weight:** 540 lbs
- **Finish:** Hot Dipped Galvanized



SCAN QR CODE
FOR MORE PRODUCT INFORMATION



Call our sales team today 704-981-8660 Email sales@znd.com

PRODUCT CODE 09055455

Barrier Stillage 25 HDG

This barrier stillage helps prevent fixed leg or bar barriers from getting damaged when not in use or when being transported, increasing the life of the barriers.

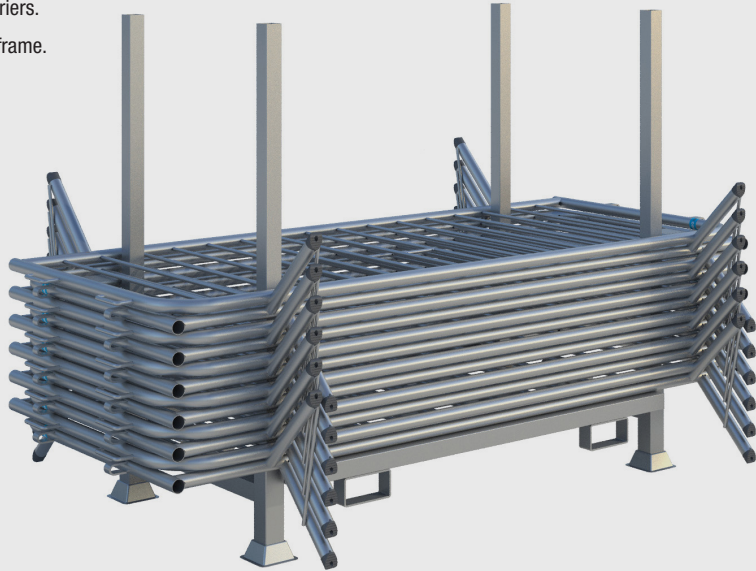
Stillages can be stacked on top of one another, reducing the amount of storage space needed.

This stillage can be used to carry both bar barriers and fixed leg barriers.

The riser posts are removable and can be stored within the stillage frame.

Holds 25 barriers.

- **Dimension:** 5'-2" x 3' x 4'-9"
- **Weight:** 159 lbs
- **Finish:** Hot Dipped Galvanized



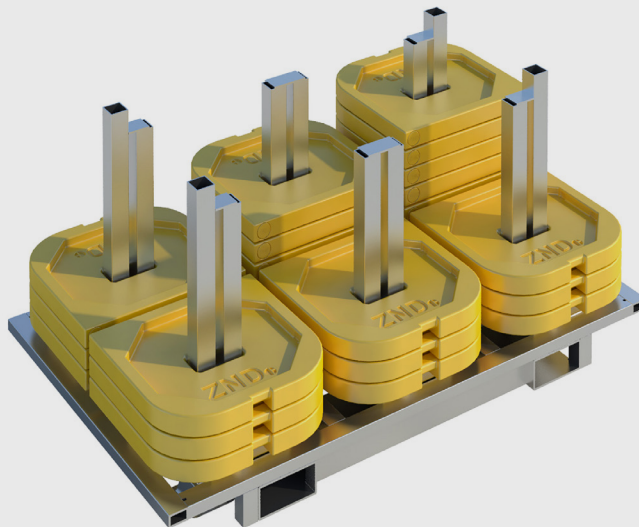
PRODUCT CODE 09057001

Z Block Stillage

This stillage comes with 60 Z Blocks for transport and storage.

*Not sold separately

- **Dimension:** 4'-9" x 2'-10.25" x 2'-6"
- **Weight:** 283 lbs
- **Finish:** Hot Dipped Galvanized



SCAN QR CODE
FOR MORE PRODUCT INFORMATION



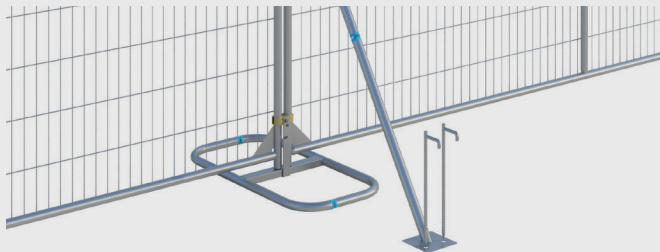
Stabilizer Systems

Thanks to our wide array of stabilizing systems, assembling a run of fence panels is now easy and straight forward.

Designed and developed for use in a range of environmental conditions, sites, surfaces and locations, our Stabilizers help you maintain the highest standards of health and safety. To ensure you get the correct stabilizing system for your fence, we maintain a Customer Portal for our customers to access our assembly guides as well as detailed information as to the wind resistance of our stabilizing systems. We can also provide site specific advice and guidance.



SmartWeld

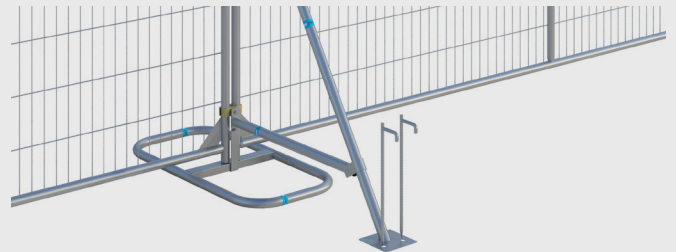


Kit Weight: 8.5

Fence Stabilizer Assembly

Fence Stabilizer - 1 per kit	09551530
Anti-Lift Bracket - 1 per kit	09051040
Fence Coupler HD (Gripper) - 1 per kit	08551320
Stabilizer Pin HD - 2 per kit	09552230
Tube Stand - Order stands as needed	13001001

Code: 09551520



Kit Weight: 10.7

Fence Stabilizer with Brace Assembly

Fence Stabilizer with Brace - 1 per kit	09551538
Anti-Lift Bracket - 1 per kit	09051040
Fence Coupler HD (Gripper) - 1 per kit	08551320
Stabilizer Pin HD - 2 per kit	09552230
Tube Stand - Order stands as needed	13001001

Code: 09551536

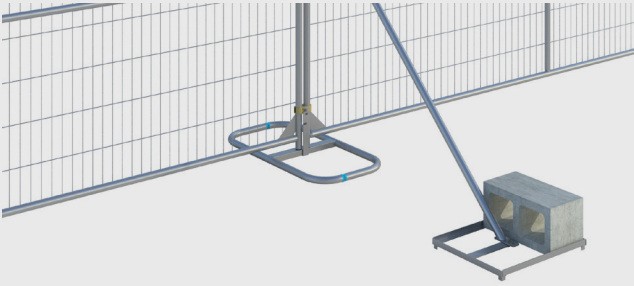


SCAN QR CODE FOR MORE PRODUCT INFORMATION



Call our sales team today 704-981-8660 Email sales@znd.com

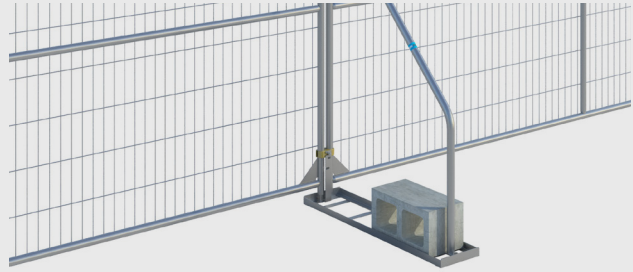
Crowd Management and Temporary Fencing Solutions



Kit Weight: 12.2

Windbreaker Standard Stabilizer Assembly Code: 16554300

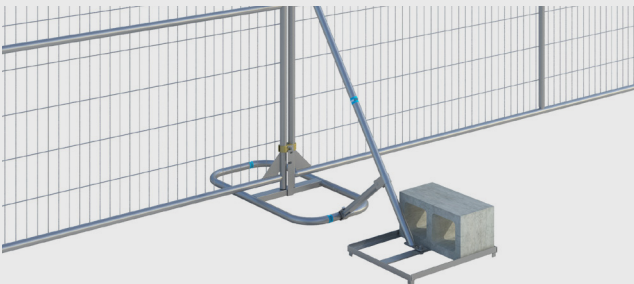
Windbreaker Stabilizer - 1 per kit	16553115
Cinder Block Tray - 1 per kit	16554101
Anti-Lift Bracket - 1 per kit	09051040
Fence Coupler HD (Gripper) - 1 per kit	08551320
Tube Stand - Order stands as needed	13001001



Kit Weight: 17.1

Windbreaker Zero-Trip Stabilizer Assembly Code: 16554200

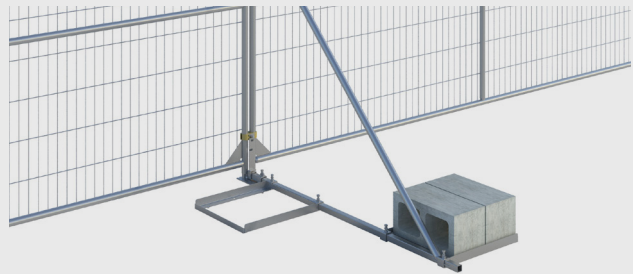
Windbreaker Zero-Trip Stabilizer - 1 per kit	16554205
Windbreaker Zero-Trip Stabilizer Base - 1 per kit	16554201
Anti-Lift Bracket - 1 per kit	09051040
Fence Coupler HD (Gripper) - 1 per kit	08551320



Kit Weight: 12.9

Windbreaker Plus Stabilizer Assembly Code: 16554150

Windbreaker Plus Stabilizer - 1 per kit	16554151
Cinder Block Tray - 1 per kit	16554101
Anti-Lift Bracket - 1 per kit	09051040
Fence Coupler HD (Gripper) - 1 per kit	08551320
Tube Stand - Order stands as needed	13001001



Kit Weight: 21.5

Windbreaker Elite Stabilizer Assembly Code: 16553100

Windbreaker Stabilizer - 1 per kit	16553115
Windbreaker Zero - Trip Foot - 1 per kit	16553101
Windbreaker Bottom Tube- 1 per kit	16553105
Windbreaker Cinder Block Tray - 1 per kit	16553125
Anti-Lift Bracket - 1 per kit	09051040
Fence Coupler HD (Gripper) - 1 per kit	08551320

Cinder Blocks not included.



**SCAN QR CODE
FOR MORE PRODUCT INFORMATION**

Accessories

Our accessories are designed and rigorously tested to work in harmony with our fence and barrier products, including:

- Tube Stands
- Couplers
- Privacy Screen

Our accessories are also designed to enhance our fence and barriers to make sure that they are safe but also secure.

We can also create customized accessories for all your needs. Please contact us for more information.

Key to product categories

- F** Fence
- B** Barrier
- S** Stabilizer



SmartWeld

Improving Site Security

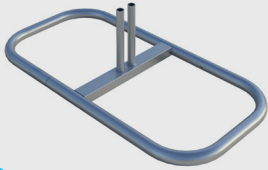
A range of dedicated accessories provide work sites with more effective security than traditional temporary fence solutions.

Welded wire mesh is a great security improvement over the traditional chain link mesh. In addition to the smaller gap which makes it harder to get a foot hold, the mesh is welded at every point of contact and at 144 points along the frame ensuring that broken wires do not compromise the integrity of the panel.



**SCAN QR CODE
FOR MORE PRODUCT INFORMATION**

Crowd Management and Temporary Fencing Solutions



S

PRODUCT CODE 13001001
Tube Stand

- **Dimensions:** 3'-0" x 9.375"
- **Weight:** 9.7 Lbs
- **Finish:** Pre-Galvanized



S

PRODUCT CODE 09051040
Anti-Lift Bracket

- **Dimensions:** 1.97" x 9.8"
- **Weight:** 0.5 Lbs
- **Finish:** Pre-Galvanized



S

PRODUCT CODE 09551530
Fence Stabilizer

- **Dimensions:** 3'-2.9" x 4'-10.5"
- **Weight:** 5.5 Lbs
- **Finish:** Pre-Galvanized



S

PRODUCT CODE 09551538
Fence Stabilizer with Brace

- **Dimensions:** 3'-2.9" x 4'-10.5"
- **Weight:** 7.7 Lbs
- **Finish:** Pre-Galvanized



S

PRODUCT CODE 16554201
Zero-Trip Stabilizer Base

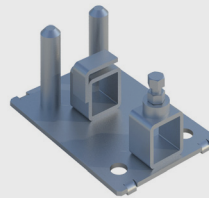
- **Dimensions:** 3'-4.4" x 2.8"
- **Weight:** 10.8 Lbs
- **Finish:** Electro-Galvanized



S

PRODUCT CODE 16554205
Zero-Trip Stabilizer

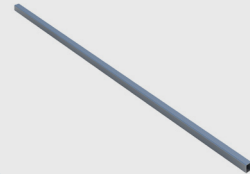
- **Dimensions:** 3'-1.9" x 5'-2.1"
- **Weight:** 5.3 Lbs
- **Finish:** Pre-Galvanized



S

PRODUCT CODE 16553101
Windbreaker Zero-Trip Foot

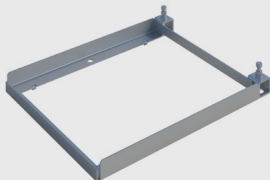
- **Dimensions:** 4.7" x 3.2"
- **Weight:** 3 Lbs
- **Finish:** Electro-Galvanized



S

PRODUCT CODE 16553105
Windbreaker Bottom Tube

- **Dimensions:** 5'-3" x 1.18"
- **Weight:** 6 Lbs
- **Finish:** Pre-Galvanized



S

PRODUCT CODE 16553125
Windbreaker Cinder Block Tray

- **Dimensions:** 1'-7.7" x 3.1"
- **Weight:** 6 Lbs
- **Finish:** Electro-Galvanized



S

PRODUCT CODE 16553115
Windbreaker Stabilizer

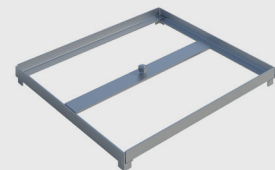
- **Dimensions:** 5'-0" x 5'-0"
- **Weight:** 5.5 Lbs
- **Finish:** Pre-Galvanized



S

PRODUCT CODE 16554151
Windbreaker Plus Stabilizer

- **Dimensions:** 3'-3.4" x 4'-4"
- **Weight:** 6.2 Lbs
- **Finish:** Pre-Galvanized



S

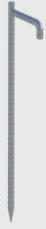
PRODUCT CODE 16554101
Cinder Block Tray

- **Dimensions:** 1'-8.1" x 1.8"
- **Weight:** 5.7 Lbs
- **Finish:** Electro-Galvanized



ACCESSORIES

ACCESSORIES



S

PRODUCT CODE 09552230
Stabilizer Pin HD

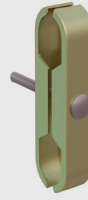
- **Dimensions:** 3.5" x 1'-5.2"
- **Weight:** 1Lbs
- **Finish:** Electro Galvanized



S

PRODUCT CODE 09552250
Earth Anchor

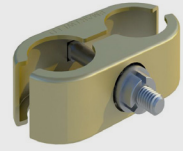
- **Dimensions:** 2.6" x 1'-5.5"
- **Weight:** 1.2 Lbs
- **Finish:** Electro Galvanized



F

PRODUCT CODE 08551340
Extension Panel Coupler HD (Gripper)

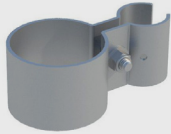
- **Dimensions:** 6.3" x 1.25" x 4.25"
- **Weight:** 0.82 Lbs
- **Finish:** Electro Galvanized



F

PRODUCT CODE 08551420
Fence Coupler HD (Griplock)

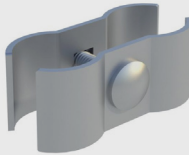
- **Dimensions:** 3.86" x 1.25" x 2.75"
- **Weight:** 0.54 Lbs
- **Finish:** Electro Galvanized



F

PRODUCT CODE 08551520
Ring Coupler

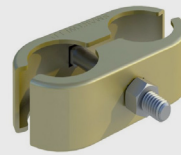
- **Dimensions:** 5.16" x 2" x 2.87"
- **Weight:** 0.84 Lbs
- **Finish:** Electro Galvanized



F

PRODUCT CODE 08551201
Fence Coupler Standard

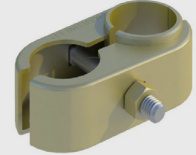
- **Dimensions:** 3.4" x 1.375" x 2.4"
- **Weight:** 0.37 Lbs
- **Finish:** Carbon Steel Pre-Galvanized



F

PRODUCT CODE 08551320
Fence Coupler HD (Gripper)

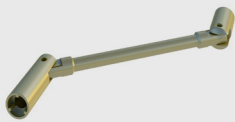
- **Dimensions:** 3.85" x 1.25" x 2.75"
- **Weight:** 0.5 Lbs
- **Finish:** Carbon Steel Grade S275



F

PRODUCT CODE 09054090
Gate Hinge Coupler

- **Dimensions:** 3.85" x 1.57" x 2.95"
- **Weight:** 0.73 Lbs
- **Finish:** Carbon Steel Grade S275



F

PRODUCT CODE 08551448
Coupler Spanner

- **Dimensions:** Ø 0.95" x 11.5"
- **Weight:** 0.84 Lbs
- **Finish:** Hard Chrome Gold



F

PRODUCT CODE 08551470
Lockable Coupler Socket

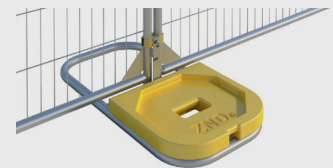
- **Dimensions:** Ø 0.88" x 2.5"
- **Weight:** 0.3 Lbs
- **Finish:** Hard Chrome Gold



F

PRODUCT CODE 12551115
Z-Weight (Pallet of 72)

- **Dimensions:** 1'-11.6" x 1'-7.5" x 3.07"
- **Weight:** 30 Lbs
- **Finish:** Self Colored



F

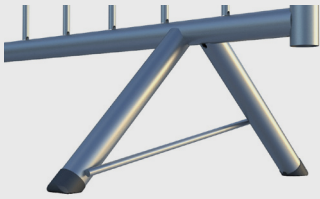
PRODUCT CODE 12551121
Z-Block (Stillage of 60)

- **Dimensions:** 1'-6" x 1'-4.9" x 3.15"
- **Weight:** 27 Lbs.
- **Finish:** Self Colored



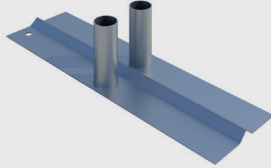
SCAN QR CODE
FOR MORE PRODUCT INFORMATION

Crowd Management and Temporary Fencing Solutions



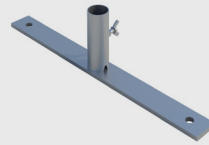
F
PRODUCT CODE 01063201-2
Leg Insert for Fixed Leg Barrier

- **Dimensions:** 1.58" x .98"
- **Weight:** N/A
- **Finish:** Self Colored



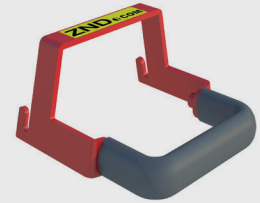
B
PRODUCT CODE 13052530
Double Flat Metal Foot Female

- **Dimensions:** 1'-11.4" x 4.8"
- **Weight:** 4 Lbs
- **Finish:** Pre-Galvanized



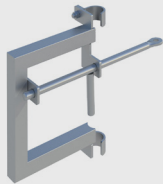
B
PRODUCT CODE 01062201-2
Flat Foot

- **Dimensions:** 1'-9" x 5.1"
- **Weight:** 5 Lbs
- **Finish:** Hot Dipped Galvanized



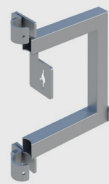
F
PRODUCT CODE 09052290
Panel Lifting Handle

- **Dimensions:** 6.1" x 3.45"
- **Weight:** 1.3 Lbs
- **Finish:** Powder Coated



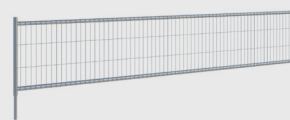
F
PRODUCT CODE 09053035
Gate Latch Male Side

- **Dimensions:** 9" x 11.4"
- **Weight:** 4.6 Lbs
- **Finish:** Pre-Galvanized



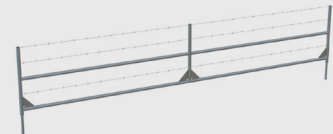
F
PRODUCT CODE 09053045
Gate Latch Female Side

- **Dimensions:** 9" x 11.4"
- **Weight:** 3.3 Lbs
- **Finish:** Pre-Galvanized



F
PRODUCT CODE 09251540
Fence Extension Panel

- **Dimensions:** 12'-0" x 2'-10.4"
- **Weight:** 29.5 Lbs
- **Finish:** Pre-Galvanized



F
PRODUCT CODE 09251640
Barbed Wire Extension Panel

- **Dimensions:** 12' x 2'-2.2"
- **Weight:** 28.2 Lbs
- **Finish:** Pre-Galvanized



F
PRODUCT CODE 09053010
Gate Wheel Assembly

- **Dimensions:** 1'-2.1" x 9.9"
- **Weight:** 5.5 Lbs
- **Finish:** Electro Galvanized



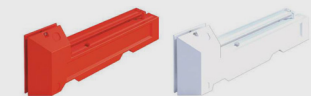
F
PRODUCT CODE 02252005
Reflective Fence Panel Strip Red & White

- **Dimensions:** 12'-0" x 6"
- **Weight:** 1.1 Lbs
- **Finish:** UV Printed PVC



F
PRODUCT CODE 02252001
Reflective Fence Panel Strip Orange & White

- **Dimensions:** 12'-0" x 6"
- **Weight:** 1.1 Lbs
- **Finish:** UV Printed PVC



F
PRODUCT CODE
 Red 12551571
 White 12551572
Slot Block

- **Dimensions:** 11'-11.3" x 1'-3.2" x 1'-11.6"
- **Weight:** 34.41 Lbs
- **Finish:** Self Colored

*2 Slot Blocks required for each panel, sold separately 855 Lbs (filled with water)



SCAN QR CODE FOR MORE PRODUCT INFORMATION



ACCESSORIES

ACCESSORIES



F

PRODUCT CODE 09052232
Barbed Wire Extension

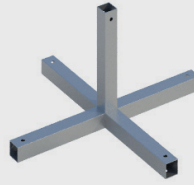
- **Dimensions:** 3.85" x 1'8.9"
- **Weight:** 3.3 Lbs
- **Finish:** Electro Galvanized



F

PRODUCT CODE 09052237
Barbed Wire Extension Y Shape

- **Dimensions:** 1'-8" x 1'-8.4
- **Weight:** 2.6 Lbs
- **Finish:** Electro Galvanized



F

PRODUCT CODE 09052260
Cable Containment J Hook Foot

- **Dimensions:** 1'-8.3" x 10.6"
- **Weight:** 4.2 Lbs
- **Finish:** Pre-Galvanized



F

PRODUCT CODE 09052255
Cable Containment J Hook

- **Dimensions:** 1.2" x 5'-9.9"
- **Weight:** 6.3 Lbs
- **Finish:** Pre-Galvanized

Load Data Guide

Standard Load - Fixed Leg Barriers: 600 per load, Packs of 25

Standard Load - Flat Foot Barriers: 816 per load, Packs of 68

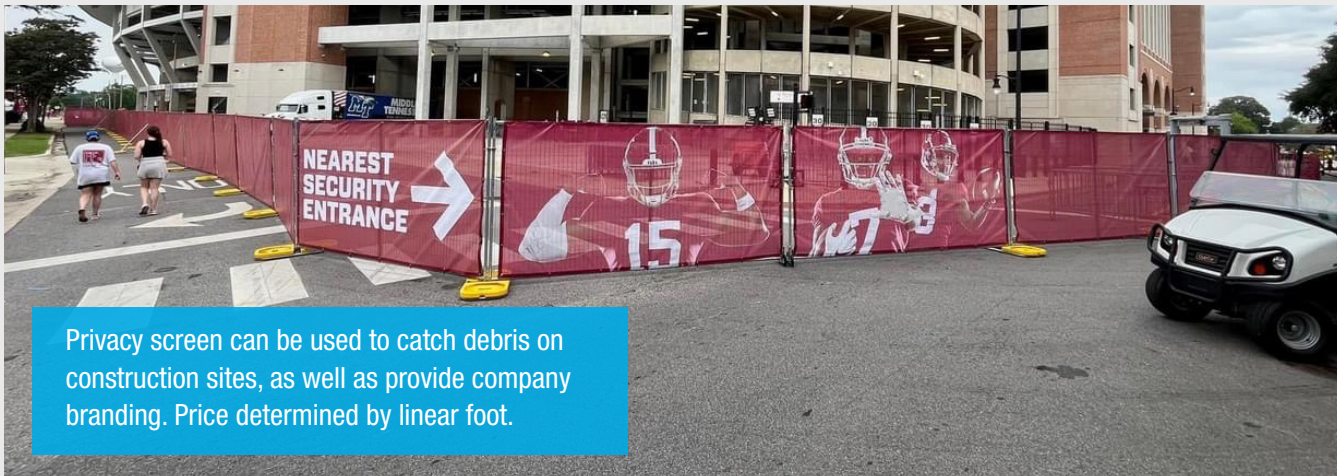
Type	Products	Quantity	Bundles
6' Panels	Panels/Stands/Couplers	280	8 bundles of 32, 2 bundles of 12
	Panels	304	8 bundles of 32, 4 bundles of 12
8' Panels	Panels/Stands/Couplers	192	6 bundles of 32
	Panels	256	8 bundles of 32
Barriers	Bar Barrier, Lightweight	500	20 bundles of 25, 1000 feet
	Bar Barrier, Heavy Duty	816	12 bundles of 68
	Fixed Leg, Lightweight	600	24 bundles of 25
	Fixed Leg, Heavy Duty	600	24 bundles of 25



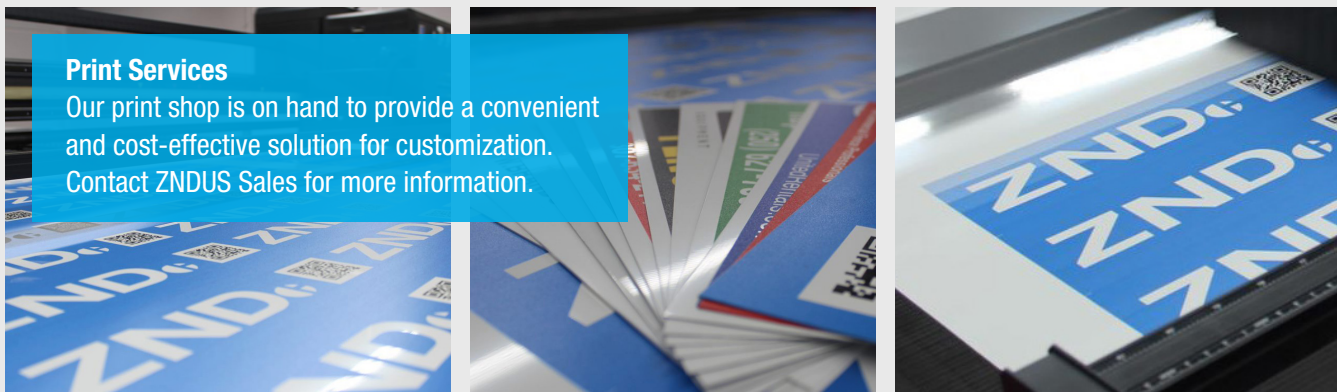
SCAN QR CODE
FOR MORE PRODUCT INFORMATION

Privacy Screen/Fence Cover

Fence Cover Name	Stock Code	Dimension (Feet and inches)	Weight (Lbs)
Fence Cover Green 6'	0957001	5'-8" x 50'	7.8
Fence Cover Black 6'	0957005	5'-8" x 50'	7.8
Fence Cover Blue 6'	0957011	5'-8" x 50'	7.8
Fence Cover Custom Printed	0957015	As requested by linear foot	N/A
Fence Cover Green 8'	0957051	7'-8" x 50'	10.6
Fence Cover Black 8'	0957055	7'-8" x 50'	10.6
Fence Cover Blue 8'	0957057	7'-8" x 50'	10.6
Fence Cover 8' Custom Printed	0957059	As requested by linear foot	N/A



Privacy screen can be used to catch debris on construction sites, as well as provide company branding. Price determined by linear foot.



Print Services
Our print shop is on hand to provide a convenient and cost-effective solution for customization. Contact ZNDUS Sales for more information.



SCAN QR CODE FOR MORE PRODUCT INFORMATION



**Stronger
Safer
Smarter**



ZND has a global reputation as the market leader in the manufacturing and supply of high-quality temporary fencing, pedestrian barriers, and accessories in the UK, Germany, France, Holland, Poland and most recently the United States.

We are at the forefront of innovation in manufacturing with continued investment in our machinery and processes to make our products the market leaders that our customers expect.

Please do not hesitate to contact us if you have any questions about our service or products.

**US Corporate Office
and US East Factory:**

**214 James Farm Rd
Statesville, NC 28625**

Tel: 704-981-8660
Email: sales@znd.com

US West Factory

**2121 W Almond Ave
Madera, CA 93637**

Tel: 559-613-1173
Email: sales@znd.com