

CELEBRATING 30 YEARS

SNUG COTTAGE
Est. 1995
HARDWARE

OF EXCEPTIONAL QUALITY



SNUG COTTAGE HARDWARE

Exterior Hardware

2025 - 2026

COLLECTIONS & USER GUIDE

Phone (800) 637-5427 • Fax (519) 474-3337 • info@snugcottagehardware.com

SIGNATURE HARDWARE

HINGES

Old-Fashioned Heavy Duty Hinges 6 - 7

12", 16" & 24" Stainless Steel Old-Fashioned Hinges8

12" Curved Old-Fashioned Hinges 9

Cranked Bands with Pins10 - 11

Curved Cranked Bands with Pins12

12" Adjustable Cranked Band Hinges, Faux Hinge Fronts & 12" Straps with Pins to Screw13

LATCHES

Twisted Ring Latches14 - 15

Hampton Thumb Latches16 - 17

Wooden Gate Latches18

Cape Cod Latch, Twisted Ring Pull & Hampton Faux Handle19

Cane Bolts20

CLOSERS & ACCESSORIES

Cannonball Gate Closer21

Brutus Torsion Gate Spring22

Gate Stop & Padlock Eyes23

Cabin Hooks & Gate Holdbacks 24

CONTEMPORARY HARDWARE

HINGES

Contemporary Cranked Band Hinges 26 - 27

LATCHES

Contemporary Ring Latches28 - 29

Contemporary Suffolk Latch **NEW PRODUCT**30 - 31

Contemporary Cane Bolts32

ACCESSORIES

Contemporary Ring Pull & Faux Contemporary Suffolk Latch Handle33

Contemporary Butt Hinges, Contemporary Cabin Hook & Cleat Handle34

HEAVY DUTY & AGRICULTURAL HARDWARE

HINGES

Double Strap with Central Eye Hinges & Hardware Sets36 - 37

Double Strap with Rear Eye Hinges & Hardware Sets38 - 39

Flat Strap Hinges, Cranked Strap Hinges & Optional Back Plates40

Cranked Strap Hinge Hardware Sets & Associated Fastener Packs41

3/4" Dia. Pins, Pintels & Gate Eyes 42 - 45

SS Greased Ball Bearing Hinges **NEW PRODUCT** 46 - 47

HEAVY DUTY & AGRICULTURAL HARDWARE (Continued)

LATCHES & ACCESSORIES

Lockable 'Mammoth' Cane Bolt & Lockable Cane Bolt48 - 49

Slide Bolt Latch + Cabin Hook & Gate Holdback50

Irish Gate Latch & Escutcheon Plate + 'T' Hasp & Staple51

Throw Over Gate Loop & Heavy Duty Gate Wheel52

Mounted Gate Secure Chain, Spring Gate Latch & Quick Catch Latch53

Black Stainless Steel Wood Screws & Carriage Bolts54

Black TEK Screws, Lag Screws & Black Touch-Up Paint55

Fastener Packs for SCH Gate Builds 56

LANDSCAPE POSTS & CHAIN

POSTS & CHAIN

Boston Garden Style & Central Park Style Post and Caps, Post & Chain Starter Kit + Accessory Packs **NEW PRODUCT**58 - 59

Landscape Chain60

Victorian Spiked Chain61

ACCESSORIES

Chain Fittings & Accessories62 -63

PVC & CONVENTIONAL HARDWARE

STAINLESS STEEL HARDWARE FOR PVC & VINYL GATES

Adjustable Old-Fashioned Hinge66 - 67

Twisted Ring Gate Latch68

Hampton Thumb Latch69

Adjustable Self-Closing Hinges and Latches70 - 71

Cane Bolt with Separate Retainer, Gate Stop, Brutus Torsion Gate Spring & SS Handle72 - 73

STAINLESS STEEL HARDWARE FOR ORNAMENTAL ALUMINUM GATES

Adjustable Self-Closing Hinge and Latch74

Cane Bolt75

STAINLESS STEEL HARDWARE FOR WOOD GATES

Self-Closing Wrap Around Hinges + Threaded Hooks & Eyes76

Heavy Duty Gravity Catches & Stainless Steel Handle77

DISTRIBUTED HARDWARE

POST HOLE DIGGERS

Boston Post Hole Digger & Replacement Parts80

LOCKS & LATCHES

D&D Technologies Hardware81

Borg Locks Combination Controlled Access **NEW PRODUCT**82 - 87

PRODUCT SELECTION INFORMATION

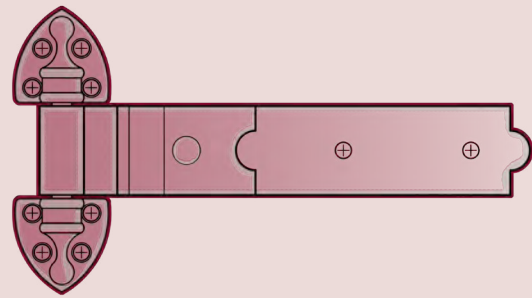
Gate Terminology88 - 89

Superior Metals & Finishing Information 90 - 91



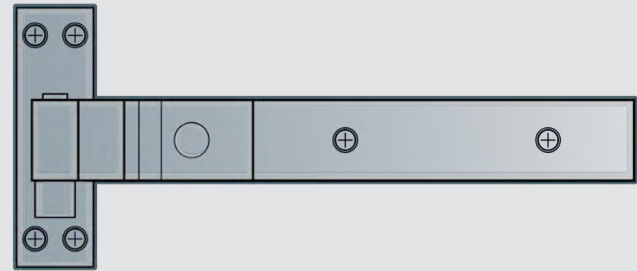
SNUG COTTAGE *Signature* HARDWARE

Traditional-styled hardware that combines stunning design with exceptional quality.

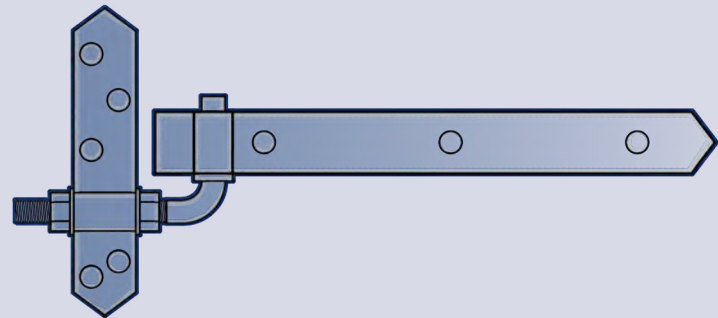


The CONTEMPORARY Collection by Snug Cottage Hardware

Our most popular traditional-styled hardware re-imaged to create a modern design esthetic.



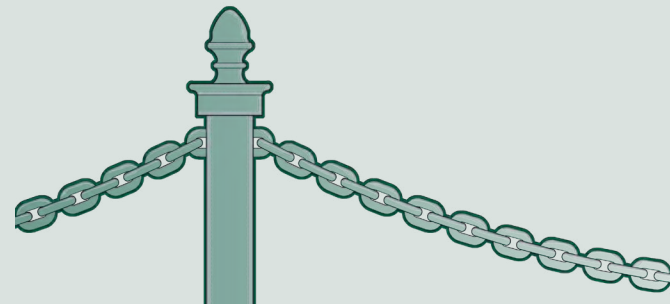
Durable, robust & adjustable hardware that will help you succeed with your heavier gate projects.



LANDSCAPE POST & CHAIN

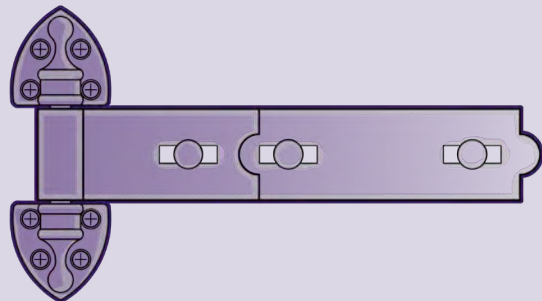


Whether directing people through a landscape, restricting public access or edging a planting bed, our post and chain is an attractive and unique solution.



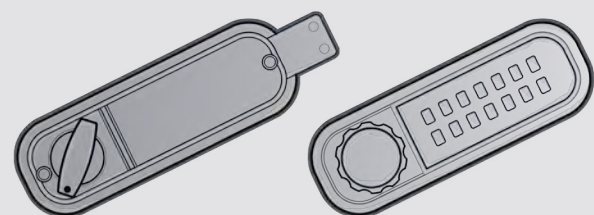
PVC + CONVENTIONAL HARDWARE

Superior-quality hardware intended for use on vinyl-pvc, wood and aluminum gates, that is designed for easy installation and adjustment as well as produced from materials that won't rust.



DISTRIBUTED HARDWARE

Related products from partners that prioritize quality as much as we do.



Our Hardware Collections group together products with a similar design esthetic and that are intended for use on the same materials (e.g. wood, PVC & Vinyl, etc.). Using our Collections will assist you in selecting complimentary hardware to enhance your projects.

HARDWARE COLLECTIONS



SNUG COTTAGE *Signature* HARDWARE

Our flagship collection of traditional-styled hardware combines stunning design with exceptional quality.

OLD-FASHIONED HEAVY DUTY HINGES



Our **Old-Fashioned Heavy Duty Hinges** are our best-selling hinges! These hinges utilize a traditional design originating back in the 1800's, are incredibly strong and are available in a wide range of sizes.

KEY FEATURE

- A traditional design combined with exceptional strength.
- Intended for wood applications including gates, barns, garages, garden sheds, outdoor showers and carriage houses.
- Available in 7", 12", 16", 18", 20", 24", 30" and 36" lengths.
- Sold in pairs.
- Forged steel heavy duty straps with cast iron cups.
- Available in both Hot Dipped Galvanized or Black (BPPCG) finishes.★
- Color matched stainless steel wood screws (2" x #12) included.
- A carriage bolt is required for each hinge. Hinge sizes 7" to 16" require 3/8" dia. bolts and 18" to 36" require 1/2" dia. bolts. These are not included with the hinge pairs because the length of bolt needed will vary with each installation. Order bolts 1" longer than the overall thickness of your gate or door. Color matched bolts are available on page 54.



INSTALLATION SPECS

- Flush mounting is the most common method of installation. The hinge is mounted directly onto the face of the gate and post. We recommend a minimum 1/4" space be maintained between the gate and post to allow for expansion of the wood in changing seasons.
- Jamb mounting requires the cast iron cups be mounted on the side of the post. The recommended spacing between the gate and post varies depending on the hinge length utilized and how it is applied to the gate. Please refer to our Installation Details for more information.

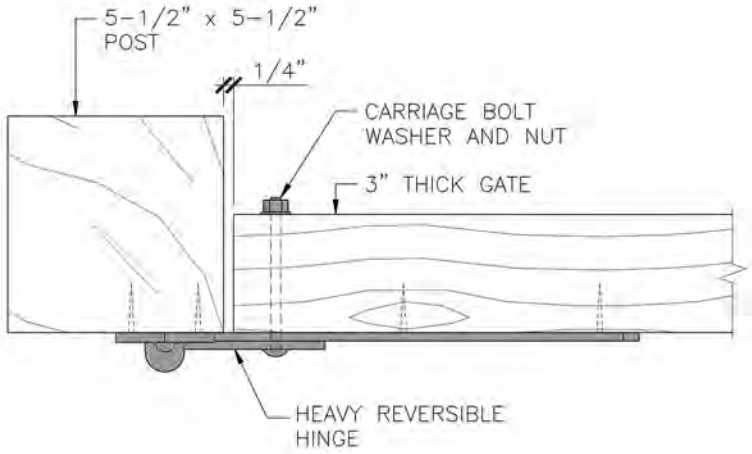
★ **What Size Hinge to Use?**

The general rule is that a hinge strap should be about 1/4 to 1/3 the width of the gate or door. If the gate or door is over 6' tall, then a third hinge should be utilized (typically one hinge for every 3' of height).

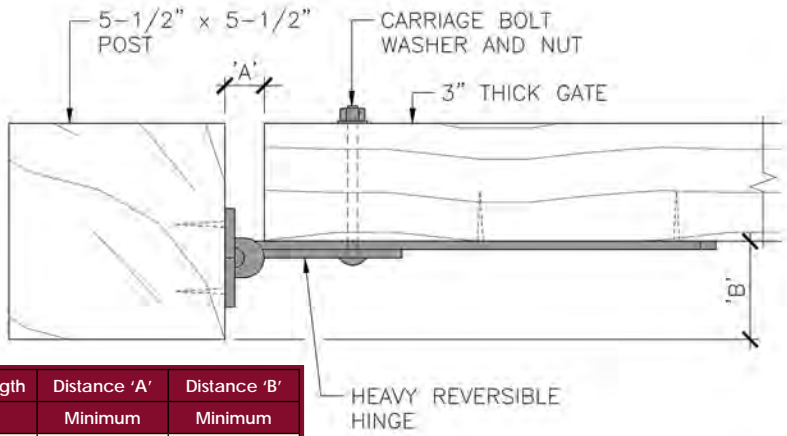
ORDERING INFORMATION

Length of Band	Pin. Dia.	Product Code	
Inches	Inches	Black (BPPCG)	Hot Dip Galv.
7	1/2	8292-07SP	8292-072
12	1/2	8292-12SP	8292-122
16	1/2	8292-16SP	8292-162
18	5/8	8292-18SP	8292-182
20	5/8	8292-20SP	8292-202
24	5/8	8292-24SP	8292-242
30	3/4	8292-30SP	8292-302
36	3/4	8292-36SP	8292-362
1.5" x #12 Black Phillips Drive Stainless Steel Wood Screws (Qty. of 10)		FP-1.5SM10-B	FP-1.5SM10-SS
3" Long #12 Stainless Steel Wood Screws (Qty. of 24)		FP-3XL24-B	FP-3XL24-SS

INSTALLATION DETAIL (FLUSH MOUNT)



INSTALLATION DETAIL (SETBACK MOUNT)



Hinge Length	Distance 'A'	Distance 'B'
Inches	Minimum	Minimum
7" to 16"	1"	1-5/8"
18" to 24"	1-1/8"	1-7/8"
30" to 36"	1-1/4"	2"



12", 16" & 24" STAINLESS STEEL OLD-FASHIONED HINGES



The *Stainless Steel Old-Fashioned Hinge* is our top-of-the-line hinge! The bands and investment cast cups are manufactured using 304 stainless steel. This hinge can withstand even the harshest environments!

KEY FEATURES

- Ideal for use in oceanside environments.
- Intended for wood applications including gates, barns, garages, garden sheds, outdoor showers and carriage houses.
- Available in 12", 16" and 24" lengths.
- Sold in pairs.
- Manufactured from 304 stainless steel.
- Available in Black Polyester Powder Coat finish.
- Color matched stainless steel wood screws (2" x #12) included.
- A carriage bolt is required for each hinge. Hinge sizes 7" to 16" require 3/8" dia. bolts and 18" to 36" require 1/2" dia. bolts. These are not included with the hinge pairs because the length of bolt needed will vary with each installation. Order bolts 1" longer than the overall thickness of your gate or door. Color matched bolts are available on page 54.

INSTALLATION SPECS

- Flush mounting is the most common method of installation. The hinge is mounted directly onto the face of the gate and post. We recommend a minimum 1/4" space be maintained between the gate and post to allow for expansion of the wood in changing seasons.
- Jamb mounting requires the cast iron cups be mounted on the side of the post. The recommended spacing between the gate and post varies depending on the hinge length utilized and how it is applied to the gate.

ORDERING INFORMATION

Description	Product Code
12" Black Stainless Steel Old-Fashioned Hinges (Pair)	8292-12SS
16" Black Stainless Steel Old-Fashioned Hinges (Pair)	8292-16SS
24" Black Stainless Steel Old-Fashioned Hinges (Pair)	8292-24SS



12" CURVED OLD-FASHIONED HINGES

Our 12" *Fixed Curve* and 12" *Adjustable Curve* Old-Fashioned Hinges have been developed for use with curved-top gate designs (gates that either curve upward or bow downward). These hinges allow for a greater range of gate designs that can be used to create a truly beautiful fence project.

KEY FEATURES

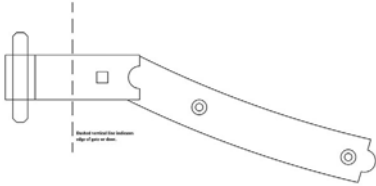
- Unique designs allow for a high degree of gate or door design flexibility.
- Intended for wood gates or doors with a curved-top design.
- Available in 12" length only.
- Fixed Curve Hinges have a 36" o/c radius.
- Adjustable Curve Hinges have a 54" o/c radius.
- Sold in pairs with a straight 12" Old-Fashioned Hinge.
- Forged steel heavy duty straps with cast iron cups.
- Available in Hot Dipped Galvanized or Black (BPPCG) finishes.★
- Color matched stainless steel wood screws (2" x #12) included.
- A 3/8" dia. carriage bolt is required for each hinge. These are not included with the hinge pairs because the length of bolt needed will vary with each installation. Order bolts 1" longer than the overall thickness of your gate or door. Color matched bolts are available on page 54.

INSTALLATION SPECS

- Multiple mounting options give you the flexibility for the hinge to curve down for scalloped applications or curve up for arched applications.
- Fixed left hand hinges bow to the left and can be mounted on the left side of a gate/door and curve downward or be flipped onto the right side of a gate/door and curve upward.
- Fixed right hand hinges bow to the right and can be mounted on the right side of a gate/door and curve downward or be flipped onto the left side of a gate/door and curve upward.
- Our Adjustable Curve Hinge can be mounted on either the left or right hand side of a gate/door and curve either upward or downward on either side. The curved portion of the strap also articulates allowing it to easily match up to varying gate/door designs.

ORDERING INFORMATION

Description	Product Code	
	Black (BPPCG)	Hot Dip Galv.
12" Fixed Curve Old-Fashioned Hinges (Left-Hand)	8292-12LP	8292-12L2
12" Fixed Curve Old-Fashioned Hinges (Right-Hand)	8292-12RP	8292-12R2
12" Adjustable Curve Old-Fashioned Hinges (Left or Right Hand)	8292-12ACP	8292-12AC2



DOWNLOAD AND PRINT
A PDF TEMPLATE AT
www.snugcottagehardware.com



ADJUSTABLE CURVE
HINGE SET



★BPPCG = Black Polyester Powder Coat over Galvanize.
Please see pages 90-91 for more information.

CRANKED BANDS WITH PINS



FLUSH MOUNT
PIN UP



JAMB MOUNT
PIN DOWN



JAMB MOUNT
PIN UP



Our **Cranked Bands with Pins** combine a traditional design with exceptional strength and installation versatility. They can be mounted flush with the front of the post or are ideal when a gates needs to be setback from the front of the post but still maintain a tight fit.

KEY FEATURES

- Intended for wood applications including gates, barns, garages, garden sheds, outdoor showers and carriage houses.
- Available in 7", 12", 18", 24", and 36" lengths.
- Sold in pairs.
- Forged steel heavy duty straps and pins.
- Available in Hot Dipped Galvanized or Black (BPPCG) finishes.★
- Color matched stainless steel wood screws (2" x #12) included.
- A carriage bolt is required for each hinge. Hinge sizes 7" to 16" require 3/8" dia. bolts and 18" to 36" require 1/2" dia. bolts. These are not included with the hinge pairs because the length of bolt needed will vary with each installation. Order bolts 1" longer than the overall thickness of your gate or door. Color matched bolts are available on page 54.

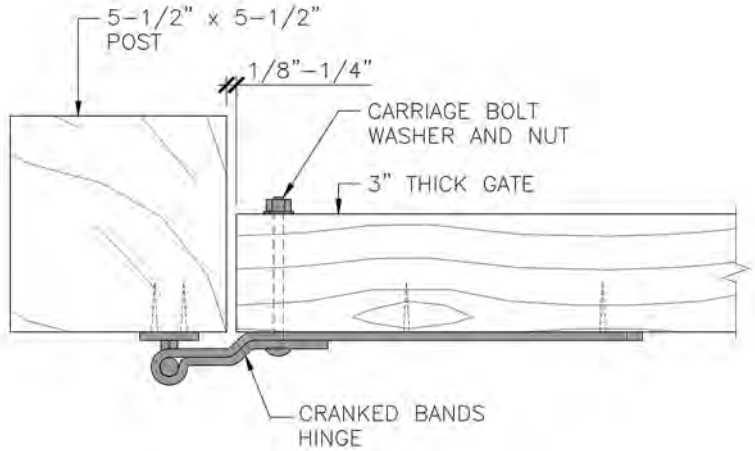
INSTALLATION SPECS

- Flush mounting is the most common method of installation. The hinge is mounted directly onto the face of the gate and post. We recommend a minimum 1/4" space be maintained between the gate and post to allow for expansion of the wood in changing seasons.
- Jamb mounting requires the pins be mounted on the side of the post. We recommend a minimum 1/8" space be maintained between the gate and post to allow for expansion of the wood in changing seasons.
- This style of hinge has a loose fit on the pin. This slackness will not be evident when both hinges are installed.
- If both hinges are installed with the pins pointing up, the gate can be easily removed. Installing one hinge with the pin pointing down prevents removal of the gate.

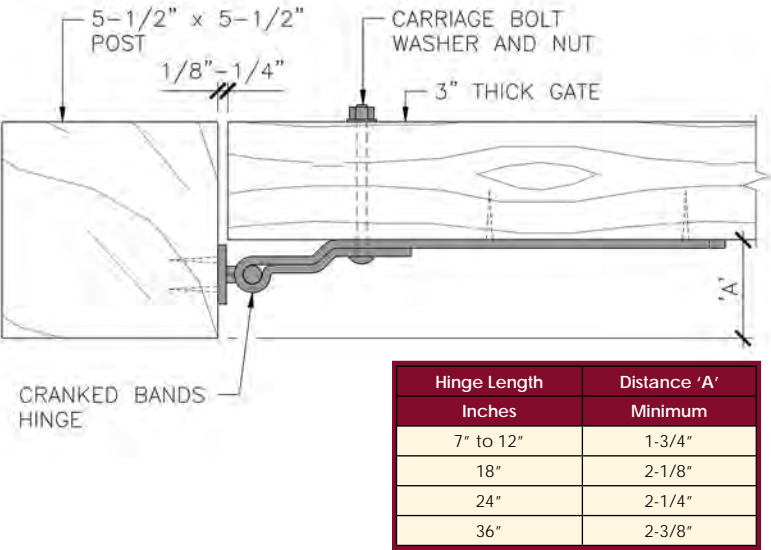
ORDERING INFORMATION

Length of Band	Pin. Dia.	Product Code	
Inches	Inches	Black (BPPCG)	Hot Dip Galv.
7	1/2	8295-07SP	8295-072
12	1/2	8295-12SP	8295-122
18	5/8	8295-18SP	8295-182
24	5/8	8295-24SP	8295-242
36	3/4	8295-36SP	8295-362
1.5" x #12 Black Phillips Drive Stainless Steel Wood Screws (Qty. of 10)		FP-1.5SM10-B	FP-1.5SM10-SS
3" Long #12 Stainless Steel Wood Screws (Qty. of 24)		FP-3XL24-B	FP-3XL24-SS

INSTALLATION DETAIL (FLUSH MOUNT)



INSTALLATION DETAIL (SETBACK MOUNT)



Hinge Length	Distance 'A'
Inches	Minimum
7" to 12"	1-3/4"
18"	2-1/8"
24"	2-1/4"
36"	2-3/8"



CURVED CRANKED BANDS WITH PINS



Our **Curved Cranked Bands with Pins** have the same attributes as our straight Cranked Bands with Pins. They are a robust hinge option with a more contemporary styling than many of our other Snug Cottage Signature Hardware products. These hinges are primarily used with curved-top gates or doors (designs that either curve up or bow downward).

KEY FEATURES

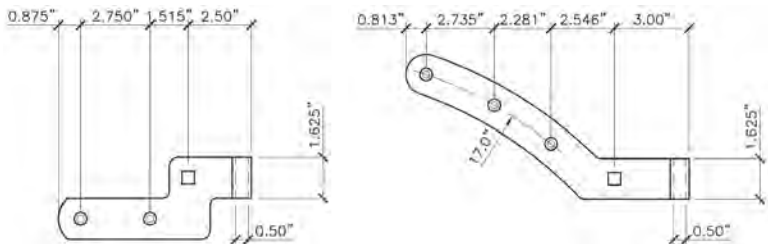
- A traditional design combined with exceptional strength.
- Intended for wood gates or doors with a curved-top design.
- The pin plate is 1.5" wide x 5-3/8" high.
- Curve has 17" o/c radius.
- From the center of the pin to the end of the bottom strap is 7".
- From the center of the pin to the end of the top strap is 11".
- Sold in sets (top and bottom hinge).
- Forged steel heavy duty straps and pins.
- Available in Hot Dipped Galvanized or Black (BPPCG) finishes.★
- Color matched stainless steel wood screws (2" x #12) included.
- A carriage bolt is required for each hinge. Hinge sizes 7" to 16" require 3/8" dia. bolts and 18" to 36" require 1/2" dia. bolts. These are not included with the hinge pairs because the length of bolt needed will vary with each installation. Order bolts 1" longer than the overall thickness of your gate or door. Color matched bolts are available on page 54.

INSTALLATION SPECS

- Curved Cranked Band with Pins can be flush mounted or jamb mounted (setback mounted).
- Flush mounting is the most common method of installation. The hinge is mounted directly onto the face of the gate and post. We recommend a minimum 1/4" space be maintained between the gate and post to allow for expansion of the wood in changing seasons.
- Jamb mounting requires the pins be mounted on the side of the post. We recommend a minimum 1/8" space be maintained between the gate and post to allow for expansion of the wood in changing seasons.

ORDERING INFORMATION

Description	Product Code	
	Black (BPPCG)	Hot Dip Galv.
Left Mount Cranked Band - Curved Down (Set)	8295-12LDP	8295-12LD2
Left Mount Cranked Band - Curved Up (Set)	8295-12LUP	8295-12LU2
Right Mount Cranked Band - Curved Down (Set)	8295-12RDP	8295-12RD2
Right Mount Cranked Band - Curved Up (Set)	8295-12RUP	8295-12RU2



DOWNLOAD AND PRINT PDF TEMPLATES AT
www.snugcottagehardware.com

★BPPCG = Black Polyester Powder Coat over Galvanize.
Please see pages 90-91 for more information.

12" ADJUSTABLE CRANKED BAND HINGES

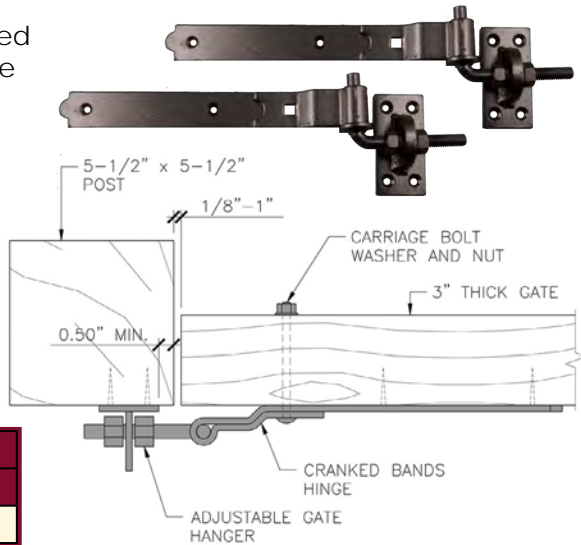
Our **Adjustable Cranked Band Hinges** are a variation of our Cranked Bands with Pins (8295) that allow for easy lateral adjustment in case the post or gate shifts/moves.

KEY FEATURES

- Intended for use on flush mounted, wood gates and doors.
- Sold in pairs.
- Forged steel heavy duty straps and pins.
- Available in Hot Dipped Galvanized or our Black (BPPCG) finishes.★
- Color matched stainless steel wood screws (2" x #12) included.
- A carriage bolt is required for each hinge (not included). Color matched bolts are available on page 54.

ORDERING INFORMATION

Description	Product Code	
	Black (BPPCG)	Hot Dip Galv.
12" Adjustable Cranked Band Hinges (Pair)	8295-12ASP	8295-12A2



FAUX HINGE FRONTS

Faux Hinge Fronts are non-functioning straps that match our Old-Fashioned HD Hinges (8292) & Cranked Bands with Pins (8295).

KEY FEATURES

- Intended for esthetic purposes only. Also can be used as a decorative strap/back plate behind our 8292 and 8295 hinges.
- Sold in pairs.
- Manufactured from 3/16" thick steel.
- Available in Hot Dipped Galvanized or our Black (BPPCG) finishes.★
- Color matched black stainless steel fasteners included.

ORDERING INFORMATION

Description	Product Code	
	Black (BPPCG)	Hot Dip Galv.
12" Faux Hinge Fronts (Pair)	8293-12SP	8293-122
18" Faux Hinge Fronts (Pair)	8293-18SP	8293-182
24" Faux Hinge Fronts (Pair)	8293-24SP	8293-242



12" STRAPS WITH PINS TO SCREW

Our **12" Straps with Pins to Screw** combine a traditional design with exceptional strength and installation versatility. They are ideally used with the pin lagged into round wood posts or epoxied into masonry or granite posts.

KEY FEATURES

- Pin is 1/2" dia. x 4" long.
- Forged steel heavy duty straps and lag-type pins.
- Available in Hot Dipped Galvanized or Black (BPPCG) finishes.★
- Color matched stainless steel wood screws (2" x #12) included.
- A carriage bolt is required for each hinge (not included). Color matched bolts are available on page 54.

ORDERING INFORMATION

Description	Product Code	
	Black (BPPCG)	Hot Dip Galv.
12" Straps with Pins to Screw (Pair)	8294-12SP	8294-122



TWISTED RING LATCH - FLUSH MOUNT



The Twisted Ring Latch - Flush Mount is a design that endures! It has a long history of use in England and has been a top-selling latch for Snug Cottage Hardware since our inception.

KEY FEATURES

- Attractive!
- Intended for use on wood single or double door configurations of gates, barn doors, garage doors, garden sheds, outdoor showers and carriage houses.
- Rosette measure 2-1/4" dia.
- Ring measures 3" across and is 1/2" diameter.
- Latching bar is 6" long.
- Sold individually.
- Manufactured from a combination of stainless steel (bar, retainer and catch) and zinc/aluminum alloy (ring and rosette).
- Available in Hot Dipped Galvanized or Black Polyester Powder Coat finishes.
- Color matched stainless steel fasteners included.
- Can be combined with Padlock Eyes if locking is required (padlock not included).

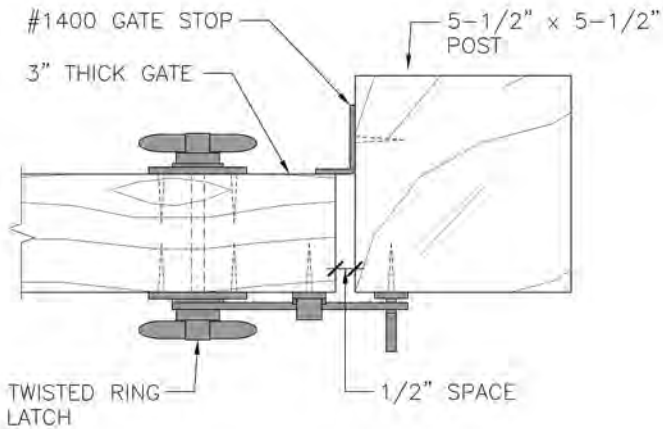
INSTALLATION SPECS

- Operates from both sides, just like a door knob.
- Allows for either a left or right handed installation.
- Minimum mounting surface required is 3-1/2" wide x 4" tall.
- Easy to install, requiring only a single 3/4" round hole.
- Intended for use on gates up to 5" thick (with standard key stock provided).

ORDERING INFORMATION

Description	Product Code	
	Black Powder Coat	Hot Dip Galv.
Twisted Ring Latch - Flush Mount	4149-L6SP	4149-062
Twisted Ring Latch - Flush Mount c/w Padlock Eyes & Gate Stop - Deluxe Version	4149-LDSP	N/A
12" Keystock (for gates over 5" thick)	4149-K12	

INSTALLATION DETAIL (FLUSH MOUNT)



TWISTED RING GATE LATCH - SETBACK MOUNT

The Twisted Ring Gate Latch - Setback Mount has the same qualities as our original Twisted Ring Latch. However, this version has been specifically designed for use when a gate is setback from the face of the posts. It has been designed with an adjustable strike catch and shorter latch bar to allow for greater installation versatility.

KEY FEATURES

- Attractive!
- Intended for use on wood single, jamb mounted (setback mounted) gates.
- Rosette measure 2-1/4" dia.
- Ring measures 3" across and is 1/2" diameter.
- Latching bar is 4" long.
- Sold individually c/w our XL Gate Stop (1400).
- Manufactured from a combination of stainless steel (bar, retainer and catch) and zinc/aluminum alloy (ring and rosette).
- Available in Black Polyester Powder Coat finish.
- Color matched black stainless steel fasteners included.

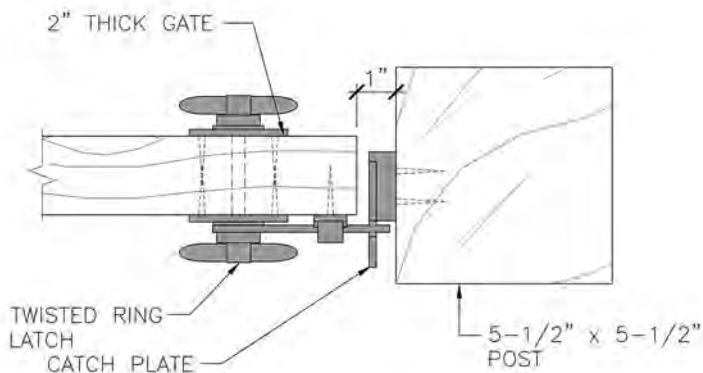
INSTALLATION SPECS

- Setback mounting requires a 1" space between the gate and post.
- Minimum mounting surface required is 4-1/2" wide x 4" tall.
- Operates from both sides, just like a door knob.
- Allows for either a left or right handed installation.
- Easy to install, requiring only a single 3/4" round hole.
- Intended for use on gates up to 5" thick (with standard key stock provided).

ORDERING INFORMATION

Description	Product Code
Black Twisted Ring Gate Latch - Setback Mount c/w XL Gate Stop	4152-L6SP
12" Keystock (for gates over 5" thick)	4149-K12

INSTALLATION DETAIL (SETBACK MOUNT)



ADJUSTABLE CATCH

HAMPTON THUMB LATCH - FLUSH MOUNT (YARD SWING)



The Hampton Thumb Latch - Flush Mount is a reproduction of a historic Pennsylvania design. This timeliness and classic latch can be utilized in a multitude of applications including yard-swing gates and in-swinging doors.

KEY FEATURES

- Ornate design.
- Intended for use on wood gates or doors.
- 7" tall handle.
- 5-1/2" long bar.
- Sold individually.
- Manufactured from a combination of stainless steel and zinc/aluminum alloy.
- Available in Black Polyester Powder Coat finish.
- Color matched black stainless steel fasteners included.
- Will not rust.
- Includes an ornate, flip-over cam locking mechanism.
- Can be combined with Padlock Eyes if a more secure lock is required (padlock not included).

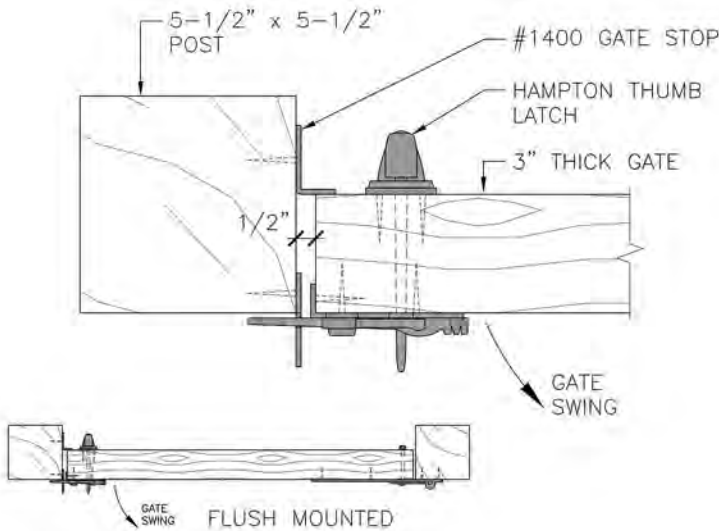
INSTALLATION SPECS

- Ideally used on yard-swing gates and in-swinging doors.
- Allows for either a left or right handed installation.
- Easy to install, requiring only a single 3/4" round hole.
- Maximum 1" gap between a gate and post.
- Supplied with a short thumb bar for gates up to 3" thick and a long thumb bar for gates 3-1/4" to 5" thick.

ORDERING INFORMATION

Description	Product Code
Black Hampton Thumb Latch - Flush Mount	4300-WSP
Black Hampton Thumb Latch - Flush Mount c/w Padlock Eyes & Gate Stop - Deluxe Version	4300-WDSP

INSTALLATION DETAIL (FLUSH MOUNT)



HAMPTON THUMB LATCH - SETBACK MOUNT (STREET SWING)

Our Hampton Thumb Latch - Setback Mount has all the attributes of our original Hampton Thumb Latch, but can be used on a gate that is jamb mounted (setback mount) from the front face of the post.

KEY FEATURES

- Ornate design.
- Intended for use on wood gates or doors.
- 7" tall handle.
- 5-1/2" long bar.
- Sold individually c/w our XL Gate Stop (1400).
- Manufactured from a combination of stainless steel and zinc/aluminum alloy.
- Available in Black Polyester Powder Coat finish.
- Color matched black stainless steel fasteners included.
- Will not rust.

INSTALLATION SPECS

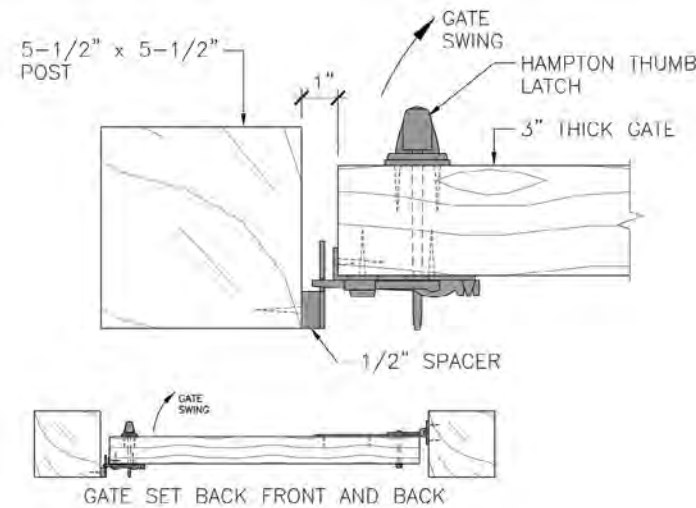
- Ideal for use on street-swing gates both flush and jamb mounted (setback mounted).
- Allows for either a left or right handed installation.
- Easy to install, requiring only a single 3/4" round hole.
- Requires a 1" minimum gap between a gate and post.
- Supplied with both a short thumb bar for gates up to 3" thick and a long thumb bar for gates 3-1/4" to 5" thick.

ORDERING INFORMATION

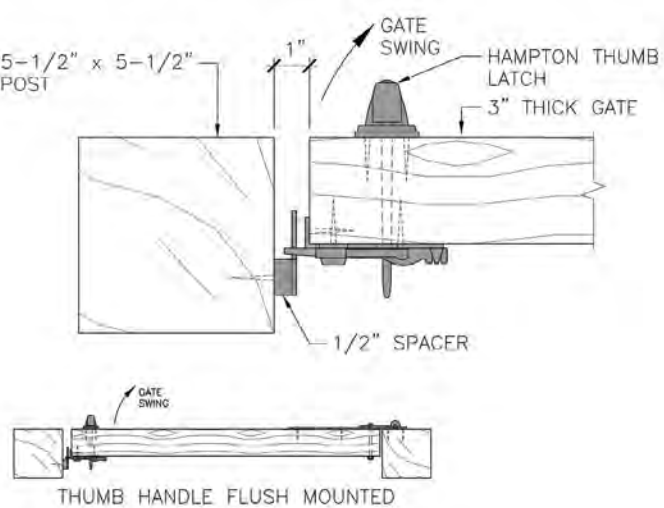
Description	Product Code
Black Hampton Thumb Latch c/w XL Gate Stop - Setback Mount	4500-WSP



INSTALLATION DETAIL (SETBACK MOUNT-CENTER)



INSTALLATION DETAIL (SETBACK MOUNT-FLUSH ONE SIDE)



OXFORD WOOD LATCH



Our **Oxford Wood Latch** is a timeless design manufactured using treated thermal ash timber. This latch is the perfect complement to unique projects where ordinary just won't do!

KEY FEATURES

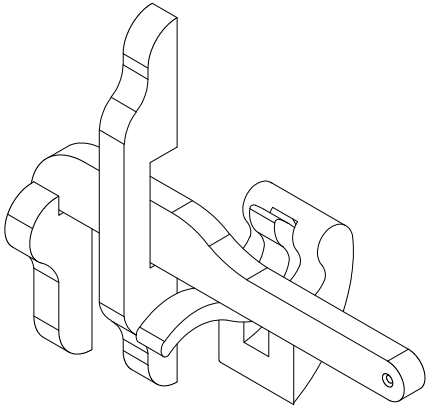
- Intended for use on wood single or double door configurations of gates, barn doors, garage doors, garden sheds, outdoor showers and carriage houses.
- Latching bar is 11-1/4" long.
- Bar retainer is 9-1/2" tall.
- Sold individually.
- Manufactured from thermal ash timber.
- Supplied in natural state. Applying an appropriate surface coating is recommended.
- Stainless steel fasteners are included.

INSTALLATION SPECS

- The Oxford Wood Latch is a through latch. The latching bar and bar retainer are mounted on the front of the gate or door, while the pull handle with lever is attached to the other side of the gate or door so the latch can be opened from both sides.
- The lever operates through a 1-1/2" diameter hole in the door.
- Intended for use on gates and/or doors up to 2-1/4" thick.

ORDERING INFORMATION

Description	Product Code
Oxford Wood Latch	4701-110



CAMBRIDGE WOOD LATCH



Our **Cambridge Wood Latch** is a timeless design manufactured using treated thermal ash timber. This latch is the perfect complement to unique projects where ordinary just won't do!

KEY FEATURES

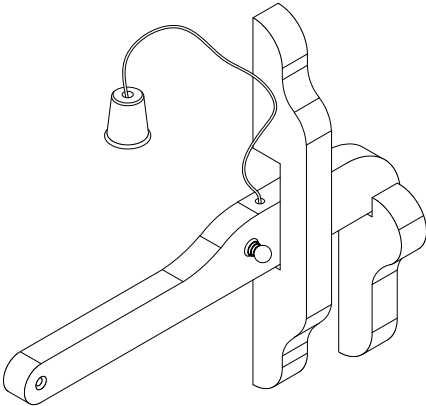
- Intended for use on wood single or double door configurations of gates, barn doors, garage doors, garden sheds, outdoor showers and carriage houses.
- Latching bar is 11-1/4" long.
- Bar retainer is 9-1/2" tall.
- Sold individually.
- Manufactured from thermal ash timber.
- Supplied in natural state. Applying an appropriate surface coating is recommended.

INSTALLATION SPECS

- The Cambridge Wood Latch is mounted on the front of a gate or door. A leather lace is attached to the bar so the latch can be opened from the other side.
- The wood pull for other side of door and stainless steel fasteners are included.
- Intended for use on gates and/or doors up to 5" thick.

ORDERING INFORMATION

Description	Product Code
Cambridge Wood Latch	4700-110



CAPE COD LATCH

Our **Cape Cod Gate Latch** is 2 latches in one...it is supplied with both a simple leg post catch (ideal for round posts) and a heavy duty lockable post catch (when a more secure installation is required). This latch is simple, rustic and operates easily from both sides of the gate.

KEY FEATURES

- Intended for use on wood gates or doors up to 5" thick.
- Latching bar is 8" long - Handle is 4" tall.
- Forged steel latching components with cast iron handle.
- Available in Hot Dipped Galvanized finish.
- Heavy plastic-coated stainless steel pull cord and fasteners included.
- Can be padlocked if locking is required. Padlock is not included.

ORDERING INFORMATION

Description	Product Code
HDG Cape Cod Latch	4900-002



TWISTED RING PULL

For decorative purposes, we offer the **Twisted Ring Pull** as a standalone product. These pulls are available in a variety of finishes and are ideal for use on gates, buildings and garage doors.

KEY FEATURES

- Rosette measure 2-1/4" dia.
- Ring measures 3" across and is 1/2" diameter.
- Manufactured from zinc/aluminum alloy.
- Available in Hot Dipped Galvanized or Black Polyester Powder Coat finishes.
- Color matched stainless steel fasteners included.

ORDERING INFORMATION

Description	Product Code	
	Black Powder Coat	Hot Dip Galv.
Twisted Ring Pull	4149-RING	4149-GALRING



FAUX HAMPTON LATCH HANDLE

For decorative purposes, we offer the **Faux Hampton Latch Handle** as a standalone product.

KEY FEATURES

- Ornate design.
- Intended for use on wood gates, buildings and garage doors.
- 7" tall.
- Sold individually.
- Manufactured from zinc/aluminum alloy.
- Available in Black Polyester Powder Coat finish.
- Color matched black stainless steel fasteners included.

ORDERING INFORMATION

Description	Product Code
Black Faux Hampton Latch Handle	4300-HANDLE



CANE BOLT



Our traditional-styled **Cane Bolts** are made with 5/8" dia. rod and available in 3 different lengths. They feature a multi-piece design so you can easily adjust and set the amount of drop you require and they come with a separate retainer to hold the bolt in the up-position making it easy to use. Cane Bolts are also supplied with a padlock-able bracket so you can lock your gates, if desired.

KEY FEATURES

- Intended to secure wood double gate or door applications.
- Bolts are 5/8" dia. rod.
- Available in 304 stainless steel with a Black Polyester Powder Coat finish or 316 stainless steel with a Natural Satin finish.
- Sold individually.
- Color matched stainless steel fasteners included.
- Supplied with separate padlock-able bracket which can be installed, if desired (padlock is not included).

INSTALLATION SPECS

- Easy left or right hand installation.
- Amount of drop is easily adjusted.
- Separate bar retainer makes it user-friendly.
- Have a tall door? Try our 36" cane bolt in an 'upside-down' position to secure and fix the doors in place.



ORDERING INFORMATION

Description	Product Code	
	Black Powder Coat	Natural Satin
18" Cane Bolt	4096-18SS	4096-18316
24" Cane Bolt	4096-24SS	4096-24316
36" Cane Bolt	4096-36SS	4096-36316



TRADITIONAL
GUIDE
BRACKET



CANNONBALL GATE CLOSER

We are pleased to offer this unique and attractive gate closer from America's Colonial past. The **Cannonball Gate Closer** is an effective means of ensuring your gate always closes.

KEY FEATURES

- Unique and attractive!
- Intended for use on wood single gate applications.
- 3-1/2" ball dia.
- Sold individually.
- We package the optional accessories separately so you can get exactly what you need for your specific installation or we have created a "Deluxe" version which includes the cannonball closer, chain, upgraded mounting hardware and a gate stop for a complete and polished installation from one stock number.
- Manufactured from a combination of cast iron (ball) and steel (chain).
- Available in Black (BPPCG) finish.★
- Mounting Kit is supplied with matching black stainless steel fasteners.
- Supplied with 3/16" dia. chain.
- We recommend the use of a Gate Stop to assist in absorbing the force of the gate closing.

INSTALLATION SPECS

- The Cannonball Gate Closer requires that an additional post be installed behind the hinge post. The chain is then attached between this extra post and the gate with a six-pound solid cast iron ball suspended on the chain. Gravity does the rest!

ORDERING INFORMATION

Description	Product Code
Cannonball Gate Closer - Ball & Chain	CBP
Cannonball Gate Closer - Mounting Kit	CBP-MK
Cannonball Gate Closer Deluxe Version - Ball & Chain, Mounting Kit & Gate Stop Included	CBP-DELUXE



★BPPCG = Black Polyester Powder Coat over Galvanize.
Please see pages 90-91 for more information.

BRUTUS TORSION GATE SPRING



The **Brutus Torsion Gate Spring** is designed to apply a ‘torsion’ force to your gate and close it. It is meant to be twisted to apply force and not stretched. This means, that when installed correctly, the act of opening the gate will further wind and/or twist the spring and when you let go of the gate the spring will want to return to its resting position.

KEY FEATURES

- Unique and effective self-closing gate mechanism.
- Intended for use on wood flush mounted gate and door applications.
- 13-1/2" overall length.
- Spring measures 1-1/8" dia. x 10-1/2" long.
- Sold individually.
- Manufactured from 304 stainless steel.
- Available in Black Polyester Powder Coat or Natural Satin finishes.
- Color matched stainless steel fasteners included.

INSTALLATION SPECS

- The tensioning nut can be tensioned with either the supplied tool or a standard 1/4" socket wrench.
- Large stop pin and adjustment tool provided to make installation easier.

ORDERING INFORMATION

Description	Product Code	
	Black Powder Coat	Natural Satin
Brutus Torsion Gate Spring	4612-HSS	4612-HSC



GATE STOP

Using a **Gate Stop** will ensure your gate stops in the correct position every time. Gate Stops are used to prevent damage from forceful closing (slamming and windblown) of both the latch and hinges in a gate installation. No different than any of the doors in your home, which have the stops built into their trim work, gates also need a stop for the same reasons. The proper use of our Gate Stop will reduce the likelihood of damage to your gate and improve its closing function, giving you worry free operation for years to come.

KEY FEATURES

- Simple and effective!
- Intended for use on wood single and double gate applications.
- 1" or 1-1/2" stopping surface.
- 3-3/4" x 1-1/2" mounting surface.
- Sold individually.
- Manufactured from 1/8" thick 304 and 316 stainless steel.
- Supplied with 1-1/2" color matched stainless steel fasteners.

ORDERING INFORMATION

Description	Product Code	
	Black Powder Coat	Natural Satin
Gate Stop	1400-BSS	1400-316
XL Gate Stop c/w 1.5" Stop Surface	1400-015SP	1400-015316



PADLOCK EYES

If the installation calls for a gate or door that has to be lockable... our **Padlock Eyes** are the solution!

KEY FEATURES

- A simple means of making gates and doors lockable.
- Intended for use on wood applications.
- 2-1/8" tall x 3/4" deep mortise mounting area and 1-7/8" deep overall.
- Sold in pairs.
- Manufactured from 304 or 316 stainless steel.
- Available in Black Polyester Powder Coat or Natural Satin finish.
- For wood applications, padlock eyes are supplied with stainless steel fasteners (1-1/4" long).
- For PVC applications, padlock eyes are supplied with 1" long stainless steel TEK fasteners.
- Padlock not included.

ORDERING INFORMATION

Description	Product Code	
	Black Powder Coat	Natural Satin
Padlock Eyes (Pair)	1300-00SP	1300-316
Padlock Eyes for PVC c/w TEK Fasteners (Pair)	1300-PVCB	N/A



CABIN HOOK & GATE HOLDBACK



4" & 6" CABIN HOOK
(CAST IRON)



Cabin Hooks and Gate Holdbacks are perfect for holding gates and doors in an open position or as a privacy lock for an outdoor shower.

KEY FEATURES

- Intended for use on wood applications.
- 4" and 6" lengths are manufactured from cast iron.
- 12" and 24" lengths are manufactured from 1/2" dia. forged steel.
- Sold individually.
- Available in both Hot Dipped Galvanized or Black (BPPCG) finishes.★
- Color matched stainless steel wood screws included.

ORDERING INFORMATION

Description	Product Code	
	Black (BPPCG)	Hot Dip Galv.
4" Cabin Hook - Cast Iron	4270-04SP	4270-042
6" Cabin Hook - Cast Iron	4270-06SP	4270-062
12" Cabin Hook and Gate Holdback (Forged Steel)	4270-12SP	4270-122
24" Cabin Hook and Gate Holdback (Forged Steel)	4270-24SP	4270-242



12" & 24" CABIN HOOK & GATE HOLDBACK
(FORGED STEEL)



★ BPPCG = Black Polyester Powder Coat over Galvanize.
Please see pages 90-91 for more information.



The
CONTEMPORARY
Collection
by Snug Cottage Hardware

A collection of our most popular traditional-styled hardware
re-imaged to create a modern design esthetic.

CONTEMPORARY CRANKED BAND HINGES



Our Contemporary Cranked Band Hinges combine a clean, contemporary design esthetic with the high quality, heavy use hardware our reputation is based on. Intended for outdoor use and able to withstand even the harshest environments.

KEY FEATURES

- A contemporary design utilizing simple, clean lines combined with exceptional quality and strength.
- Intended for use on wood gates, barns, garages, garden sheds, outdoor showers and carriage houses.
- Available in 7", 12", 16" and 24" lengths.
- Sold in pairs.
- Manufactured from 316 stainless steel.
- Available in Black Polyester Powder Coat or Natural Satin finishes.
- Color matched stainless steel wood screws included (2" x #12).
- A carriage bolt is required for each hinge. Hinge sizes 7" to 16" require 3/8" dia. bolts and 18" to 36" require 1/2" dia. bolts. These are not included with the hinge pairs because the length of bolt needed will vary with each installation. Order bolts 1" longer than the overall thickness of your gate or door. Color matched bolts are available on page 54.



INSTALLATION SPECS

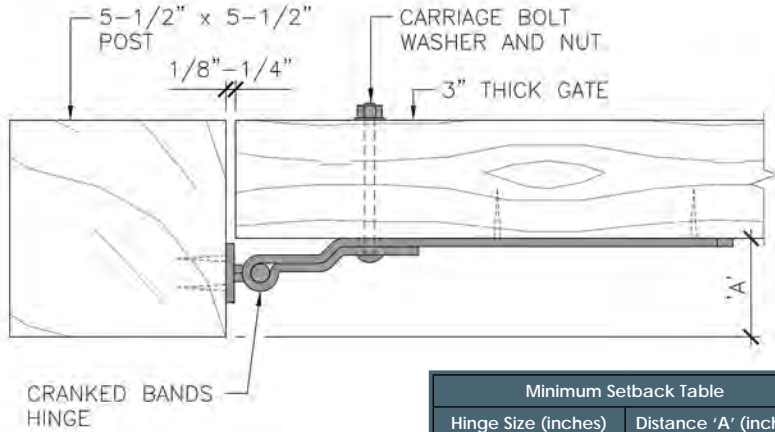
- Contemporary Cranked Band Hinges can be flush mounted or jamb mounted (setback mounted).
- Flush mounting hardware is the most common method of installation. The hinge is mounted directly onto the gate and post. We recommend a minimum 1/8" space be maintained between the gate and post.
- Jamb mounting hardware requires the pin on plate be mounted on the side of the post. We recommend a minimum 1/8" space be maintained between the gate and post.
- If both hinges are installed with the pins facing up, the gate can be easily removed. Installing one hinge with the pin facing down prevents removal of the gate.

ORDERING INFORMATION

Length of Band	Width of Band	Pin. Dia.	Plate Size	Product Code	
				Black Powder Coat	Natural Satin
7	1.6	1/2	1.6W x 5.25H	6295-07SP	6295-07316
12	1.6	1/2	1.6W x 5.25H	6295-12SP	6295-12316
16	1.6	1/2	1.6W x 5.25H	6295-16SP	6295-16316
24	2	5/8	2.0W x 6.5H	6295-24SP	6295-24316
1.5" x #12 Black Phillips Drive Stainless Steel Wood Screws (Qty. of 10)				FP-1.5SM10-B	FP-1.5SM10-SS
3" Long #12 Stainless Steel Wood Screws (Qty. of 24)				FP-3XL24-B	FP-3XL24-SS

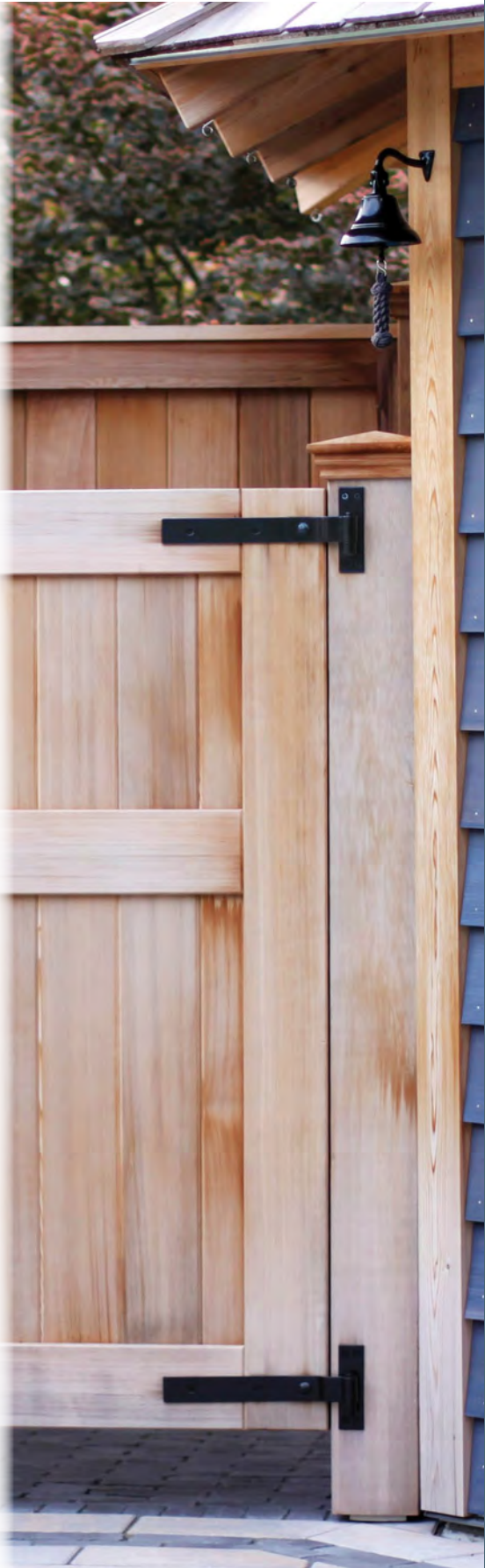
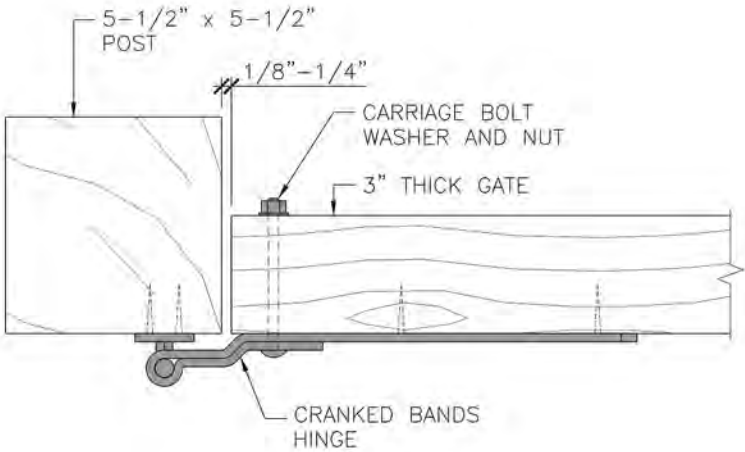


INSTALLATION DETAIL (SETBACK MOUNT)



Minimum Setback Table	
Hinge Size (inches)	Distance 'A' (inches)
7"	1-3/4" (1.75)
12"	1-3/4" (1.75)
16"	1-3/4" (1.75)
24"	2-1/4" (2.25)

INSTALLATION DETAIL (FLUSH MOUNT)



CONTEMPORARY RING LATCH - FLUSH MOUNT



Our Contemporary Ring Latch - Flush Mount was designed to be attractive and easy-to-use. It's simple, clean lines and hefty weight make it a stunning addition to any project!

KEY FEATURES

- Intended for use on wood single or double door configurations of gates, barn doors, garage doors, garden sheds, outdoor showers and carriage houses.
- Base plate measure 2-1/2" wide x 4" tall.
- Ring measures 3" across and is 1/2" diameter.
- Sold individually.
- Available in Black Polyester Powder Coat or Natural Satin finishes.
- Black Powder Coat Ring Latch is manufactured from a combination of stainless steel (bar, retainer and catch) and zinc/aluminum alloy (ring and base plate).
- Natural Satin Ring Latch is manufactured from 316 stainless steel.
- Color matched stainless steel fasteners and key stock included.
- Can be combined with Padlock Eyes, if locking is required (padlock not included).
- Operates from both sides. like a door knob.

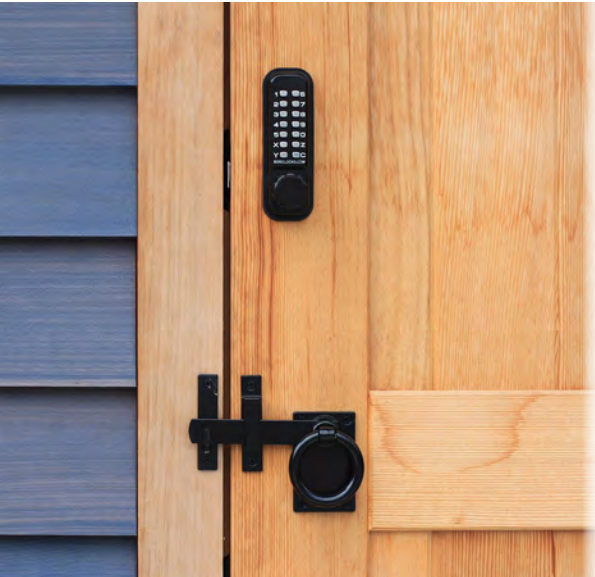
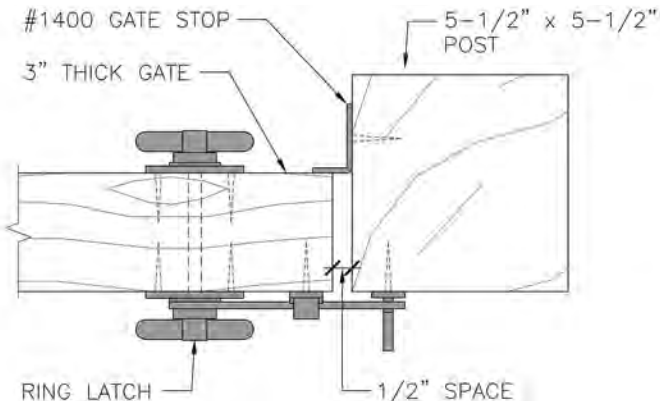
INSTALLATION SPECS

- Flush mounting hardware is the most common method of installation. We recommend a 1/4" to 1" space be maintained between the gate and post.
- Easy to install, requiring only a single 3/4" round hole.
- Suitable for gates up to 5" thick (using the standard key stock provided).
- Can be installed either left or right handed simply by flipping it over.

ORDERING INFORMATION

Description	Product Code	
	Black Powder Coat	Natural Satin
Contemporary Ring Latch - Flush Mount	6149-L6SP	N/A
Contemporary Ring Latch - Flush Mount c/w Padlock Eyes & Gate Stop - Deluxe Version	6149-LDSP	6149-LD316
12" Keystock (for gates over 5" thick)	4149-K12	

INSTALLATION DETAIL (FLUSH MOUNT)



CONTEMPORARY RING GATE LATCH - SETBACK MOUNT

Our Contemporary Ring Gate Latch - Setback Mount has all of the qualities of our standard Contemporary Styled Ring Latch (6149). However, this latch can be used when the gate is setback from the front face of the posts. It has been designed with an adjustable strike catch and shorter latch bar to allow for greater installation versatility.

KEY FEATURES

- Intended for use on wood single, jamb mounted (setback mounted) gates.
- Base plate measure 2-1/2" wide x 4" tall.
- Ring measures 3" across and is 1/2" diameter.
- Latching bar is 4" long.
- Sold individually c/w our XL Gate Stop (1400).
- Manufactured from a combination of stainless steel (bar, retainer and catch) and zinc/aluminum alloy (ring and base plate).
- Available in a Black Polyester Powder Coat finish.
- Color matched stainless steel fasteners and key stock included.
- Operates from both sides. like a door knob.

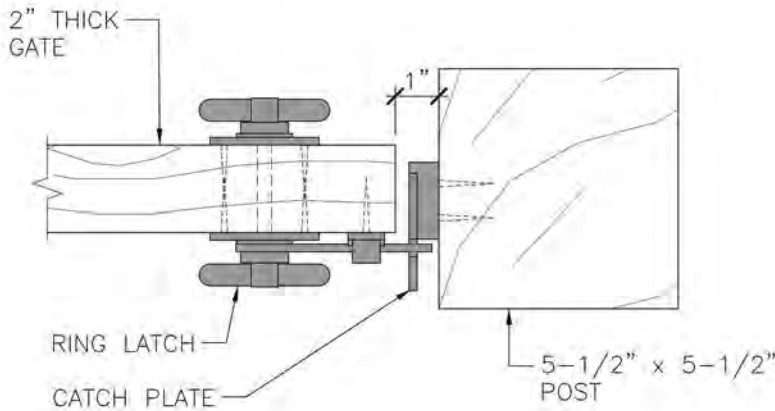
INSTALLATION SPECS

- Setback mounting requires a 1" space between the gate and post.
- Easy to install, requiring only a single 3/4" round hole.
- Suitable for gates up to 5" thick (using the standard key stock provided).
- Can be installed either left or right handed simply by flipping it over.
- Use of the supplied XL Gate Stop is recommended.

ORDERING INFORMATION

Description	Product Code
Contemporary Ring Gate Latch - Setback Mount c/w XL Gate Stop	6152-L6SP
12" Keystock (for gates over 5" thick)	4149-K12

INSTALLATION DETAIL (SETBACK MOUNT)



CONTEMPORARY SUFFOLK LATCH - FLUSH MOUNT (YARD SWING)



Our Contemporary Suffolk Latch - Flush Mount incorporates an attractive handle on one side with heavy latching components on the other side to create a beautiful, contemporary-styled gate latch like no other! It's primarily used for wooden yard-swing, privacy gates and in-swinging doors.

KEY FEATURES

- Handle back plate measures 2" wide x 8-1/2" tall.
- Latching bar measures 7/8" wide x 8" long.
- Sold individually.
- Manufactured from 316 stainless steel.
- Available in Black Polyester Powder Coat or Natural Satin finishes.
- Supplied with standard, color matched Gate Stop and Padlock Eyes.
- Color matched stainless steel fasteners included.

INSTALLATION SPECS

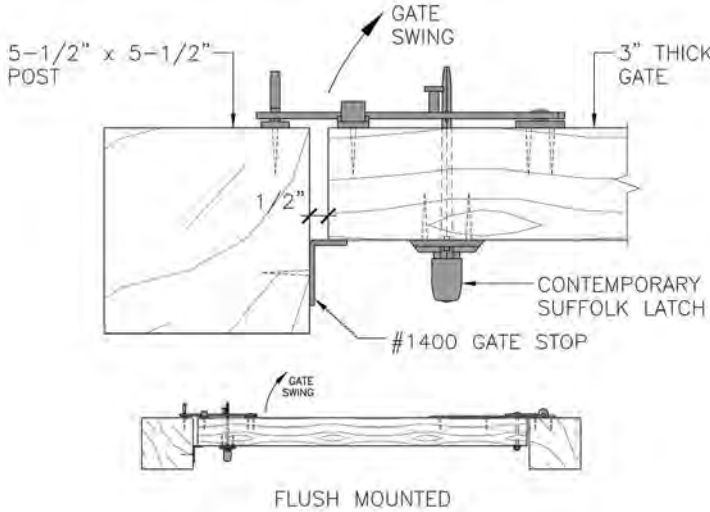
- Ideally used on yard-swing gates and in-swinging doors.
- Suitable for gates or doors up to 4" thick.

ORDERING INFORMATION

Description	Product Code	
	Black Powder Coat	Natural Satin
Contemporary Suffolk Latch - Flush Mount c/w Padlock Eyes & Gate Stop	6300-B316	6300-S316



INSTALLATION DETAIL



CONTEMPORARY SUFFOLK LATCH - SETBACK MOUNT (STREET SWING)

NEW PRODUCT



Our Contemporary Suffolk Latch - Setback Mount has all of the attractive qualities of the original yard swing model. However, this latch can be used when the gate is setback from the front face of the posts and when you want the gate to swing out toward the street while still having the handle visible from the outside. It has been designed with a shorter latch bar and an adjustable strike catch to allow for greater installation versatility.

KEY FEATURES

- Intended for use on wood and other solid gates.
- Handle back plate measures 2" wide x 8-1/2" tall.
- Latching bar measures 7/8" wide x 6" long.
- Sold individually c/w our XL Gate Stop (1400).
- Manufactured from 304 stainless steel.
- Available only in a Black Polyester Powder Coat.
- Color matched stainless steel fasteners and XL Gate Stop included.
- Operates from both sides.

INSTALLATION SPECS

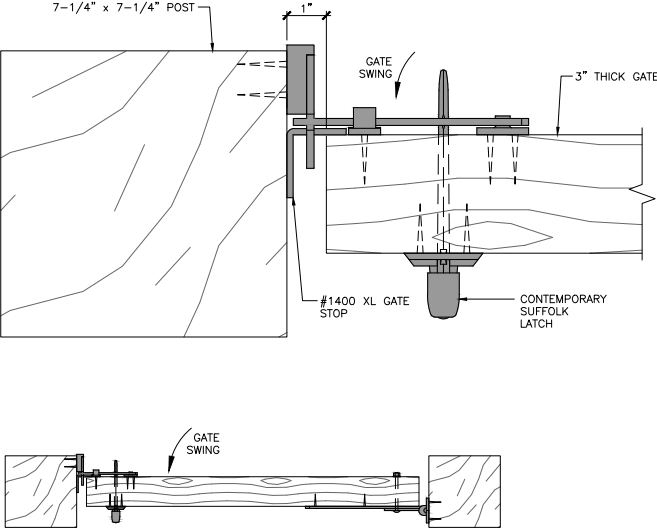
- Ideally used on street-swing gates.
- Suitable for gates or doors up to 4" thick.
- Use of the supplied XL Gate Stop is recommended.

ORDERING INFORMATION

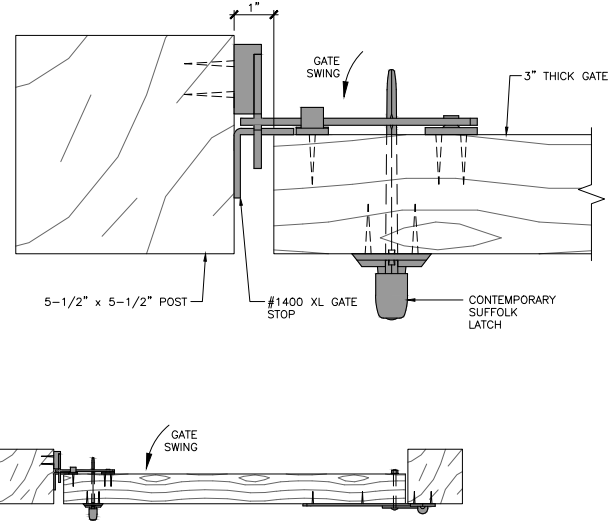
Description	Product Code
Contemporary Suffolk Latch - Setback Mount c/w XL Gate Stop	6500-B316



INSTALLATION DETAIL (SETBACK MOUNT-CENTER)



INSTALLATION DETAIL (SETBACK MOUNT-FLUSH AT BACK)





Our **Contemporary Cane Bolts** are made with 5/8" dia. rod and available in 3 different lengths. They feature a multi-piece design so you can easily adjust and set the amount of drop you require and they come with a separate retainer to hold the bolt in the up position making it easier to use. Cane Bolts are also supplied with a padlock-able bracket so you can lock your gates, if desired.

KEY FEATURES

- Intended to secure wood double gates or doors.
- Bolts are 5/8" dia. rod.
- Available in 304 stainless steel with a Black Polyester Powder Coat finish or 316 stainless steel with a Natural Satin finish.
- Sold individually.
- Color matched stainless steel fasteners included.
- Supplied with separate padlock-able bracket which can be installed, if desired (padlock is not included).

INSTALLATION SPECS

- Easy left or right hand installation.
- Amount of drop is easily adjusted.
- Separate bar retainer makes it user-friendly.
- Have a tall door? Try our 36" cane bolt in an 'upside-down' position to secure and fix the doors in place.

ORDERING INFORMATION

Description	Product Code	
	Black Powder Coat	Natural Satin
18" Contemporary Cane Bolt	6096-18SS	6096-18316
24" Contemporary Cane Bolt	6096-24SS	6096-24316
36" Contemporary Cane Bolt	6096-36SS	6096-36316



For decorative purposes, we offer the **Contemporary Ring Pull** as a standalone product. These pulls are ideal for use on wood gates, buildings and garage doors.

KEY FEATURES

- Base plate measure 2-1/2" wide x 4" tall.
- Ring measures 3" across and is 1/2" diameter.
- Sold individually.
- Manufactured from zinc/aluminum alloy (black) or 316 stainless steel (natural).
- Available in Black Polyester Powder Coat or Natural Satin finishes.
- Color matched stainless steel fasteners included.

ORDERING INFORMATION

Description	Product Code	
	Black Powder Coat	Natural Satin
Contemporary Ring Pull	6149-RING	6149-316RING



FAUX CONTEMPORARY SUFFOLK LATCH HANDLE

For decorative purposes, we offer the **Faux Contemporary Suffolk Latch Handle** as a standalone product.

KEY FEATURES

- Intended for use on wood gates, buildings and garage doors.
- Handle back plate measures 2" wide x 8-1/2" tall.
- Sold individually.
- Manufactured from 316 stainless steel.
- Available in Black Polyester Powder Coat or Natural Satin finishes.
- Color matched stainless steel fasteners included.

ORDERING INFORMATION

Description	Product Code	
	Black Powder Coat	Natural Satin
Faux Suffolk Latch Handle	6159-HANDLE	6159-HANDLE316



Our hardware can withstand even the harshest environments!
For more information please see pages 90 - 91.

CONTEMPORARY BUTT HINGES



Our **Contemporary Butt Hinges** were designed for use with gates and will withstand the harshest environments!

KEY FEATURES

- Easy swinging ball bearing function!
- Intended for use on wood gates or doors over 1-3/4" thick.
- Each wing measures 4-1/2" high x 1-5/8" wide x 1/8" thick (4" W x 4-1/2" H when open and laid flat).
- Sold in pairs.
- Manufactured from 316 stainless steel.
- Available in Black Polyester Powder Coat or Natural Satin finishes.
- Color matched stainless steel wood screws (2" x #12) included.

ORDERING INFORMATION

Description	Product Code	
	Black Powder Coat	Natural Satin
Contemporary Butt Hinges (Pair)	6100-B454	6100-S454

CONTEMPORARY CABIN HOOK



Our 6" **Contemporary Cabin Hook** is perfect as a gate holdback or outdoor shower/change room privacy lock. Manufactured from 316 stainless steel; it will last a lifetime and never rust!

KEY FEATURES

- Intended for use on wood applications.
- Available in 6" length only.
- Sold individually.
- Manufactured from 316 stainless steel.
- Available in Black Polyester Powder Coat or Shiny Natural finishes.
- Color matched stainless steel wood screws (1.5" x #8) included.

ORDERING INFORMATION

Description	Product Code	
	Black Powder Coat	Shiny Natural
Contemporary Cabin Hook	6270-06SP	6270-06316

CLEAT HANDLE



Our 10" contemporary styled **Cleat Handle** is ideal as a gate or door pull. They are also perfect for an outdoor shower when combined with a Cabin Hook on the door interior or even as towel hooks. Manufactured from 316 stainless steel; they will last a lifetime and never rust!

KEY FEATURES

- Intended for use on wood applications.
- 2-1/8" wide x 10" tall.
- Sold individually.
- Manufactured from 316 stainless steel.
- Color matched stainless steel fasteners (1.5" x #12) included.

ORDERING INFORMATION

Description	Product Code	
	Black Powder Coat	Shiny Natural
Cleat Handle	6200-BSS	6200-SSS



This collection of durable, robust and adjustable hardware will help you succeed with your heavier gate and door projects.

DOUBLE STRAPS WITH CENTRAL EYE (3" GAP)



Our **Double Strap Hinges with Central Eye** are incredibly robust and durable! They combine heavy duty construction and strength with easy adjustment. They are ideal for use on heavy gates such as rail gates, driveway entrance gates, dumpster enclosure gates, agricultural gates and the traditional English 'Five Bar Gate'.

KEY FEATURES

- Extremely heavy duty!
- Intended for use on large, heavy gates constructed using wood or cellular PVC.
- Available in 5", 12", 18" and 24" lengths.
- Straps are 2" wide x 1/4" thick.
- 3" space between straps.
- 3/4" eye to fit our 3/4" pin selection.
- Sold individually or in sets.
- Manufactured from forged steel.
- Available in Hot Dipped Galvanized or Black (BPPCG) finishes.★
- Color matched carriage bolts included.



INSTALLATION SPECS

- Double straps not only hang the gate, they strengthen and support the gate.
- A 4-1/2" to 5" space is required between the gate and post.
- A typical installation uses a Double Strap on the top and bottom of a gate. Alternatively, consider using a Double Strap at top of a gate and an adjustable gate hanger at bottom.

★ These hinges can be used in varying ways with our selection of 3/4" Pins on pages 42 - 45.

ORDERING INFORMATION

Description	Product Code	
	Black (BPPCG)	Hot Dip Galv.
5" Double Straps with Central Eye (3" Gap)	8312-65SP	8312-652
12" Double Straps with Central Eye (3" Gap)	8312-42SP	8312-422
18" Double Straps with Central Eye (3" Gap)	8312-48SP	8312-482
24" Double Straps with Central Eye (3" Gap)	8312-54SP	8312-542



★ BPPCG = Black Polyester Powder Coat over Galvanize. Please see pages 90-91 for more information.

DOUBLE STRAPS WITH CENTRAL EYE HARDWARE SETS (3" GAP)

Our **Double Strap Hinges with Central Eye Hardware Sets** come complete with all the hardware required for either a central mount or behind the post mount application. These sets provides for heavy duty construction and maximum strength with easy adjustment. Double straps and pins are our best hardware combination for larger field gates, rail gates and entrance gates.

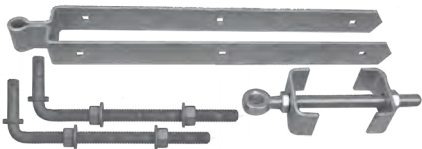
KEY FEATURES

- Each set includes one 12", 18", or 24" Double Strap with Central Eye (top of gate), one adjustable bottom gate fitting (bottom of gate) and two pins (either 8801-12" pins or 8317-13" pins).
- Double strap hinges sandwich the gate between the straps, virtually locking the corner square at 90 degrees. This helps to prevent the gate from sagging.

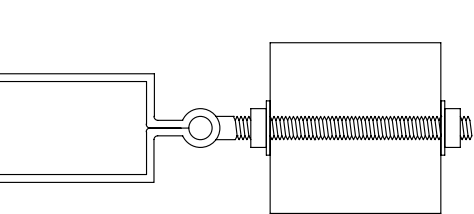
Between Post Installation

8312-S ORDERING INFORMATION

Description	Product Code	
	Black (BPPCG)	Hot Dip Galv.
Sets with 8801 - 12" Pins (Typically Used for Installations Between Posts)		
12" Double Straps with Central Eye Hardware Set	8312-S12P	8312-S122
18" Double Straps with Central Eye Hardware Set	8312-S18P	8312-S182
24" Double Straps with Central Eye Hardware Set	8312-S24P	8312-S242



INSTALLATION DETAIL & INSTALLED PHOTO (BETWEEN POST)



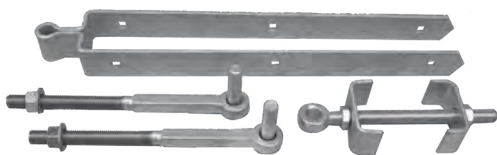
The "S" sets include our 8801 - 12" fully threaded adjustable pins which are typically used for installations centered between 2 posts. A 4-1/2" to 5" space is required between the gate and post.



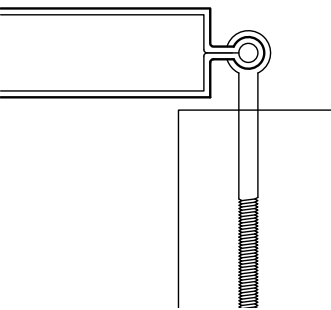
Behind Post Installation

8312-E ORDERING INFORMATION

Description	Product Code	
	Black (BPPCG)	Hot Dip Galv.
Sets with 8317 - 13" Pins (Typically Used for Installations Behind Posts)		
12" Double Straps with Central Eye Hardware Set	8312-E12P	8312-E122
18" Double Straps with Central Eye Hardware Set	8312-E18P	8312-E182
24" Double Straps with Central Eye Hardware Set	8312-E24P	8312-E242



INSTALLATION DETAIL & INSTALLED PHOTO (BEHIND POST)



The "E" sets include our 8317 - 13" square shouldered pins which are typically used for installations set behind the posts (overlapping the posts by 1/2" to 1"). This installation method enables the gate to open 180 degrees. Also, because the gate overlaps the posts it prevents accidental opening when large animals lean against the gates.



★ BPPCG = Black Polyester Powder Coat over Galvanize. Please see pages 90-91 for more information.

DOUBLE STRAPS WITH REAR EYE (3"OR 3.5" GAP)



Our **Rear Eye Double Strap Hinges** are incredibly robust and durable! They combine heavy duty construction and strength with easy adjustment while reducing the space required between the gate and post to as little as 1/2". They are ideal for use on heavy gates such as rail gates, driveway entrance gates, dumpster enclosure gates, agricultural gates and the traditional English 'Five Bar Gate'.

KEY FEATURES

- Extremely heavy duty!
- Intended for use on large, heavy gates constructed using wood or Cellular PVC.
- Available in 5", 12", 18" or 24" lengths.
- Straps are 2" wide x 1/4" thick.
- 3" or 3.5" space between straps.
- 3/4" eye to fit our 3/4" pin selection.
- Sold individually or in sets (8324-S and 8325-S on page 39).
- Manufactured from forged steel.
- Available in Hot Dipped Galvanized or Black (BPPCG) finishes.★
- Color matched carriage bolts included.

INSTALLATION SPECS

- Ideally used for heavy gates, such as rail gates, driveway entrance gates, dumpster enclosure gates, agricultural gates and the traditional English 'Five Bar Gate'.
- As little as a 1/2" space is required between the gate and post.
- Double strap hinges sandwich the gate between the straps, virtually locking the corner square at 90 degrees. This helps to prevent the gate from sagging.

★ These hinges can be used in varying ways with our selection of 3/4" Pins on pages 42 - 45.



ORDERING INFORMATION

Description	Product Code	
	Black (BPPCG)	Hot Dip Galv.
8324 Double Straps with Rear Eye (3" Between Straps)		
5" Double Straps with Rear Eye	8324-05SP	8324-052
12" Double Straps with Rear Eye	8324-12SP	8324-122
18" Double Straps with Rear Eye	8324-18SP	8324-182
24" Double Straps with Rear Eye	8324-24SP	8324-242
8325 Double Straps with Rear Eye (3.5" Between Straps)		
5" Double Straps with Rear Eye	8325-05SP	8325-052
12" Double Straps with Rear Eye	8325-12SP	8325-122
18" Double Straps with Rear Eye	8325-18SP	8325-182
24" Double Straps with Rear Eye	8325-24SP	8325-242

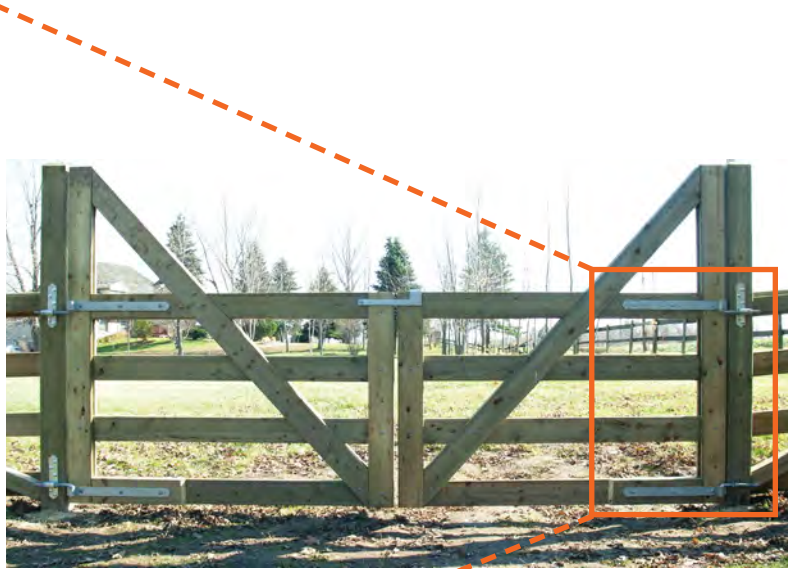


★ BPPCG = Black Polyester Powder Coat over Galvanize. Please see pages 90-91 for more information.

DOUBLE STRAPS WITH REAR EYE
HARDWARE SETS (3" OR 3.5" GAP)

Our **Double Straps with Rear Eye Sets** packages together 2 of our Rear Eye Double Straps (top and bottom hinges with 3" or 3-1/2" space between straps) and 2 matching plates with adjustable pins. They provide for a strong installation, full lateral adjustment and as little as a 1/2" between the gate and the post.

		3" Gap Between Straps		3.5" Gap Between Straps	
COMPLETE SET		INSTALLATION DETAIL		INSTALLATION DETAIL	
Strap Length (Inches)	For Gates Up To	Sets with 8324 Strap Hinges		Sets with 8325 Strap Hinges	
		Black (BPPCG)	Hot Dip Galv.	Black (BPPCG)	Hot Dip Galv.
12"	4' wide	8324-S12P	8324-S122	8325-S12P	8325-S122
18"	7' wide	8324-S18P	8324-S182	8325-S18P	8325-S182
24"	10' wide	8324-S24P	8324-S242	8325-S24P	8325-S242



★ BPPCG = Black Polyester Powder Coat over Galvanize. Please see pages 90-91 for more information.

HEAVY DUTY STRAIGHT FLAT STRAP HINGES WITH 3/4" EYE



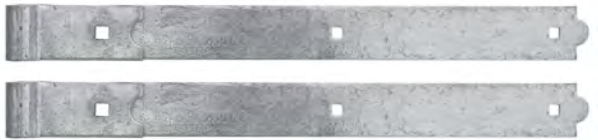
Our **Heavy Duty Straight Flat Strap Hinges** are an excellent option for your heavier wood or cellular PVC gates. They are sold in pairs and can be used with any of our 3/4" pin selections for a versatile way to hang almost any gate.

- KEY FEATURES
- Straps are 2-1/4" wide x 3/16" thick.
 - 3/4" eye to fit our 3/4" pins.

- Manufactured from forged steel.
 - Fasteners not included.
- ★ These hinges can be used in varying ways with our selection of 3/4" Pins on pages 42 - 45.

ORDERING INFORMATION

Description	Product Code	
	Black (BPPCG)	Hot Dip Galv.
12" Straight Flat Strap Hinges with 3/4" Eye (Pair)	8307-12P	8307-122
18" Straight Flat Strap Hinges with 3/4" Eye (Pair)	8307-18P	8307-182
24" Straight Flat Strap Hinges with 3/4" Eye (Pair)	8307-24P	8307-242
36" Straight Flat Strap Hinges with 3/4" Eye (Pair)	8307-36P	8307-362

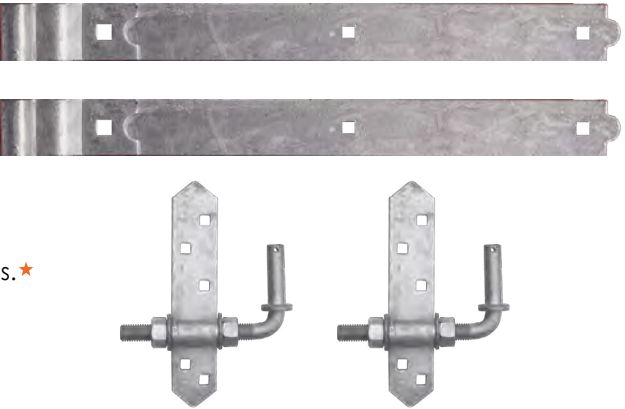


HEAVY DUTY CRANKED STRAP HINGE HARDWARE SETS

Our **Heavy Duty Cranked Strap Hinge Hardware Sets** package together 1 pair of Heavy Duty Cranked Strap Hinges with our Adjustable Hinge Mounts and 6" Pins creating a versatile, flush mount hinge system that can be used on almost any gate. This hinge setup requires minimum space between the gate and post and provides for lateral adjustment of the gate later in case the need arises.

- KEY FEATURES
- Extremely heavy duty!
 - Intended for use on wood and cellular PVC applications.
 - Available in 12", 18", 24" or 36" lengths.
 - Straps are 2-1/4" wide x 3/16" thick.
 - Optional back plates available for both the hinge straps and mounting plates.
 - Manufactured from forged steel.
 - Available in Hot Dipped Galvanized or Black (BPPCG) finishes.★
 - Fasteners not included.

COMPLETE HINGE SET



INSTALLATION SPECS

- Ideally used for heavier wood and cellular PVC gates.
- The bend or 'crank' in the strap is equal to the offset on the hinge mount providing a flush mount installation. This allows for minimum space between your gate and post once it is installed.
- The optional back plates for both the strap hinges and the mounting plates provide both additional strength (acting as large washers) and a polished look by adding the hardware esthetic to the opposite side of the gate.

ORDERING INFORMATION

Description	Product Code	
	Black (BPPCG)	Hot Dip Galv.
12" Cranked Strap Hinge Hardware Set	8305-S12P	8305-S122
18" Cranked Strap Hinge Hardware Set	8305-S18P	8305-S182
24" Cranked Strap Hinge Hardware Set	8305-S24P	8305-S242
36" Cranked Strap Hinge Hardware Set	8305-S36P	8305-S362
8305/8307 Fastener Pack for gates up to 2" thick	FP8305-20B	FP8305-20G
8305/8307 Fastener Pack for gates 2.5" thick	FP8305-25B	FP8305-25G
8305/8307 Fastener Pack for gates 3" thick	FP8305-30B	FP8305-30G
8305/8307 Fastener Pack for gates 3.5" thick	FP8305-35B	FP8305-35G
8305/8307 Fastener Pack for gates 4" thick	FP8305-40B	FP8305-40G
8305/8307 Fastener Pack for gates 4.5" thick	FP8305-45B	FP8305-45G
Carriage Bolt Fastener Pack for 6"x6" Post	FP-CB8256-B	FP-CB8256-G
Lag Screw Fastener Pack for Other Post Sizes	FP-LS8256-B	FP-LS8256-G

Our **Heavy Duty Cranked Strap Hinges** are an excellent option for your heavier wood or cellular PVC gates. They are sold in pairs and can be used with any of our 3/4" pin selections for a versatile way to hang almost any gate. The bend or 'crank' in the strap offsets the eye from the gate allowing for less space between the gate and the post when installed.

- KEY FEATURES
- Straps are 2-1/4" wide x 3/16" thick.
 - 3/4" eye to fit our 3/4" pins.
 - Manufactured from forged steel.

- Optional back plates available for added strength and a polished look.
 - Fasteners not included.
- ★ These hinges can be used in varying ways with our selection of 3/4" Pins on pages 42 - 45.

ORDERING INFORMATION

Description	Product Code	
	Black (BPPCG)	Hot Dip Galv.
12" Cranked Strap Hinges with 3/4" Eye (Pair)	8305-12P	8305-122
18" Cranked Strap Hinges with 3/4" Eye (Pair)	8305-18P	8305-182
24" Cranked Strap Hinges with 3/4" Eye (Pair)	8305-24P	8305-242
36" Cranked Strap Hinges with 3/4" Eye (Pair)	8305-36P	8305-362



OPTIONAL BACK PLATES FOR HEAVY DUTY STRAP HINGES

Our **Optional Back Plates** provide a hinge strap esthetic to the back side of your gate while boosting their strength by acting as a large washer on the back side, enabling you to sandwich the gate and bolt the system together tightly. They are a perfect match to the hole pattern and size of our 8305 and 8307 Strap Hinges.

ORDERING INFORMATION

Description	Product Code	
	Black (BPPCG)	Hot Dip Galv.
12" Opt. Back Plates for HD Cranked Straps (Pair)	8305-BP12P	8305-BP122
18" Opt. Back Plates for HD Cranked Straps (Pair)	8305-BP18P	8305-BP182
24" Opt. Back Plates for HD Cranked Straps (Pair)	8305-BP24P	8305-BP242
36" Opt. Back Plates for HD Cranked Straps (Pair)	8305-BP36P	8305-BP362

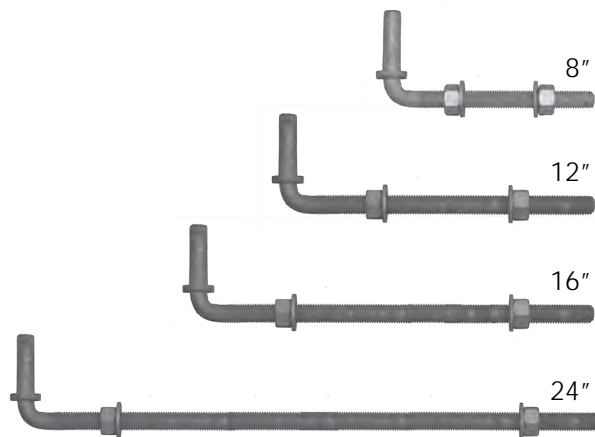


★BPPCG = Black Polyester Powder Coat over Galvanize. Please see pages 90-91 for more information.

3/4" DIA. PINS, PIN TELS AND GATE EYES

Our selection of 3/4" pins fit with our Double Strap Hinges, Straight Flat & Cranked Strap Hinges and Gate Eyes for a wide variety of mounting applications.

THREADED ADJUSTABLE PIN



Our fully **Threaded Adjustable Pins** allow you to bolt right through most post sizes and provide easy lateral-adjustment.

KEY FEATURES

- Fully threaded design provides for easy adjustment of gate position.
- Intended for all through-bolt applications of gate posts.
- Standard 3/4-10 threads.
- 3/4" dia. pin.
- Sold individually.
- Manufactured from forged steel.

ORDERING INFORMATION

Description	Product Code	
	Black (BPPCG)	Hot Dip Galv.
8" Threaded Adjustable Pin	8801-08P	8801-082
12" Threaded Adjustable Pin	8801-12P	8801-122
16" Threaded Adjustable Pin	8801-16P	8801-162
24" Threaded Adjustable Pin	8801-24P	8801-242

13" SQUARE SHOULDERED GATE PIN



13" Square Shouldered Gate Pins are used to prevent your pin from rotating within the post in a "behind the post" type installation. In this type of installation, the gate is constantly pulling to the side of the pin and the square shoulder of this pin prevents it from rotating in the hole which would cause your gate to sag.

KEY FEATURES

- Intended for use on wood applications.
- Used to prevent pin rotation in a gate post.
- 3/4" dia. pin.
- Sold individually.
- Manufactured from forged steel.

ORDERING INFORMATION

Description	Product Code	
	Black (BPPCG)	Hot Dip Galv.
13" HDG Square Shouldered Gate Pin	8317-00P	8317-002

GATE HANGER ON 4" SQUARE PLATE



The **Gate Hanger on 4" Square Plate** can be used for various wood applications where a pin that is lag screwed to the post is needed. It is often used in conjunction with our Heavy Duty Double Strap (8312 / 8324 / 8325) and Straight Flat Strap Hinges (8307) on driveway posts that cannot be through-bolted due to their size or configuration. Its solid welded construction also prevents the pin from rotating in a "behind the post" type installation.

KEY FEATURES

- Back plate is 4" x 4" square.
- 3/4" dia. pin.
- Sold individually.
- Manufactured from forged steel.
- Color matched lag bolts (3-1/2" x 3/8") included.

ORDERING INFORMATION

Description	Product Code	
	Black (BPPCG)	Hot Dip Galv.
Gate Hanger on 4" Square Plate	8254-34P	8254-342

★BPPCG = Black Polyester Powder Coat over Galvanize. Please see pages 90-91 for more information.

ADJUSTABLE GATE HANGER ON 4" SQUARE PLATE

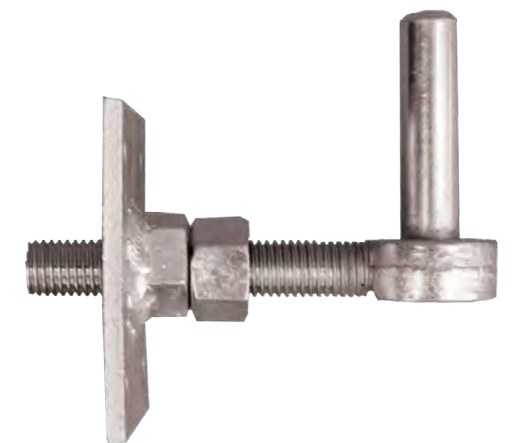
The **Adjustable Gate Hanger on 4" Square Plate** can be used for various wood applications where a pin that is lag screwed to the post is needed. It is often used in conjunction with our Heavy Duty Double Strap (8312/8324/8325) and Straight Flat Strap Hinges (8307) on driveway posts that cannot be through-bolted due to their size or configuration. Its threaded design allows for adjustment in and out, if required.

KEY FEATURES

- Back plate is 4" x 4" square.
- 3/4" dia. pin.
- Sold individually.
- Adjustable pin depth.
- Manufactured from forged steel.
- Color matched lag bolts (3-1/2" x 3/8") included.

ORDERING INFORMATION

Description	Product Code	
	Black (BPPCG)	Hot Dip Galv.
Adjustable Gate Hanger on 4" Square Plate	8255-34P	8255-342



GATE HANGER FOR MASONRY OR STONE

Our **Gate Hanger for Masonry or Stone** applications is intended to be built into new construction masonry. It is typically used for block construction but the arms can be bent if needed to conform to other materials.

KEY FEATURES

- Intended for use in combination with our Double Strap Hinges, Straight Flat & Cranked Strap Hinges and Gate Eyes.
- Arms are 12" long from center of pin.
- 3/4" dia. pin.
- Sold individually.
- Manufactured from forged steel.
- Available in Hot Dipped Galvanized finish.

ORDERING INFORMATION

Description	Product Code
HDG Gate Hanger for Masonry/Stone	8257-342



PIN TO SCREW

Our **Pin to Screw** is an alternative to using pins that bolt completely through a post. Its 'lag' type function makes it very versatile, but it is not as strong as using a through-bolt type pin.

KEY FEATURES

- Intended for use on wood applications.
- 9" overall length.
- 7" long - 3/4" dia. threaded shaft.
- 3/4" dia. pin.
- Sold individually.
- Manufactured from forged steel.

ORDERING INFORMATION

Description	Product Code	
	Black (BPPCG)	Hot Dip Galv.
Pin to Screw	8308-07P	8308-072

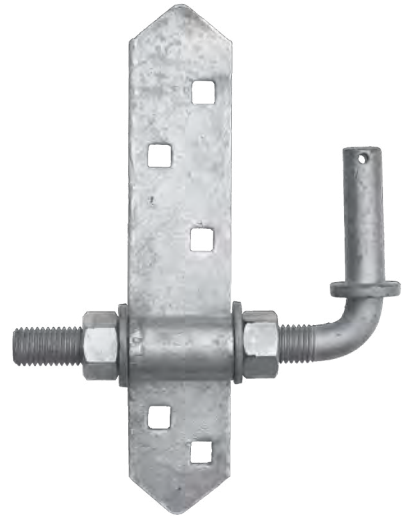


★BPPCG = Black Polyester Powder Coat over Galvanize. Please see pages 90-91 for more information.

3/4" DIA. PINS, PIN TELS AND GATE EYES

Our selection of 3/4" pins fit with our Double Strap Hinges, Straight Flat & Cranked Strap Hinges and Gate Eyes for a wide variety of mounting applications.

ADJUSTABLE HINGE MOUNT WITH 6" THREADED PIN



Our **Adjustable Hinge Mount with 6" Threaded Pin** allows for easy lateral adjustment. If paired with our Rear Eye Double Strap Hinges (8324/8325) or our Heavy Duty Cranked Strap Hinges (8305) the gate will end up flush with the face of the post.

KEY FEATURES

- Intended for use on wood, cellular PVC or steel applications.
- Hinge mount is 2" wide - 10" tall.
- 3/4" dia. pin.
- Manufactured from forged steel.
- No fasteners included.
- Optional back plates available for added strength and a polished look.

ORDERING INFORMATION

Description	Product Code	
	Black (BPPCG)	Hot Dip Galv.
Adj. Hinge Mount with 6" Threaded Pin	8256-34P	8256-342
Carriage Bolt Fastener Pack for 6"x6" Post	FP-CB8256-B	FP-CB8256-G
Lag Screw Fastener Pack for Other Post Sizes	FP-LS8256-B	FP-LS8256-G

OPTIONAL BACK PLATES FOR 8256 (ABOVE)



Our **Optional Back Plates** are a perfect match to the hole pattern and size of our Adjustable Hinge Mounts with 6" Threaded Pin (8256). They provide a matching esthetic on the back side of your gate installation while increasing their holding power by acting as a large washer when you through-bolt.

KEY FEATURES

- Intended for use on wood and cellular PVC applications.
- Back plate is 2" wide 10" tall.
- Sold individually.
- Manufactured from stamped steel.
- Fasteners not included.

ORDERING INFORMATION

Description	Product Code	
	Black (BPPCG)	Hot Dip Galv.
Optional Back Plates for Adjustable Hinge Mount with 6" Threaded Pin	8256-BP02P	8256-BP022

EYE TO SCREW



Our **Eye to Screw** works in combination with all of our 3/4" pin selections. It's a simple solution for attaching to a heavy wooden gate. It's great for use with split rail gates or round post gates. Pair it with our Pin to Screw (8308) for a heavy-duty hook and eye combination.

KEY FEATURES

- Intended for use on wood applications.
- 3/4" eye
- 4-1/2" long - 3/4" dia. threaded shaft.
- Sold individually.
- Manufactured from forged steel.

ORDERING INFORMATION

Description	Product Code	
	Black (BPPCG)	Hot Dip Galv.
Eye to Screw	8309-05P	8309-052

★BPPCG = Black Polyester Powder Coat over Galvanize. Please see pages 90-91 for more information.

ADJUSTABLE BOTTOM FITTING

Our **Adjustable Bottom Fitting** allows for the easy up or down adjustment of the latch-end of a gate. It is used as the bottom hinge in our Double Straps with Central Eye Hinge sets (8312-S and 8312-E), but we also offer it separately in case you need to break the sets apart for any reason.

KEY FEATURES

- Intended for use on wood applications.
- 10" long gate eye paired with "U" brackets to fit a 3" thick gate.
- Sold individually.
- Manufactured from forged steel.

ORDERING INFORMATION

Description	Product Code	
	Black (BPPCG)	Hot Dip Galv.
Adjustable Bottom Fitting	8250-00P	8250-002



ADJUSTABLE GATE EYE

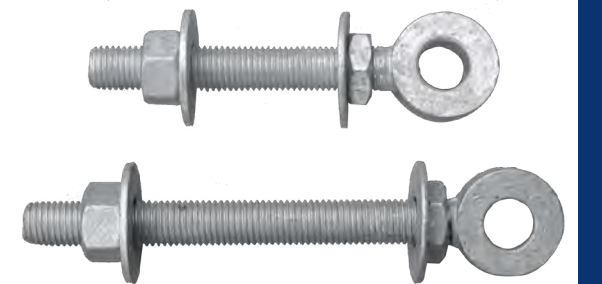
Adjustable Gate Eyes are simply a heavy duty, adjustable 3/4" eye to pair with any of our 3/4" pin selections.

KEY FEATURES

- Intended for use on any gate but most commonly used on ornamental aluminum gates.
- Length is measured from the center of the eye to the end of the shaft.
- 3/4" threaded shaft with 2 nuts and 2 washers.
- 3/4" eye fits our 3/4" pins.
- Manufactured from forged steel.

ORDERING INFORMATION

Description	Product Code
4" HDG Adjustable Gate Eye	8251-042
6" HDG Adjustable Gate Eye	8251-062
8" HDG Adjustable Gate Eye	8251-082
10" HDG Adjustable Gate Eye	8251-102



Looking for design ideas?



Follow us on

Instagram

@snugcottagehardware

★BPPCG = Black Polyester Powder Coat over Galvanize. Please see pages 90-91 for more information.



Phone (800) 637-5427

Fax (519) 474-3337

www.snugcottagehardware.com



NEW PRODUCT

STAINLESS STEEL GREASED BALL BEARING HINGES



Our **Stainless Steel Greased Ball Bearing Hinges** are crafted of polished 304 stainless steel. They can be used in a variety of welded applications and will provide reliable and very smooth operation. They are easy to use for ornamental iron gates but will also be useful for steel framed gates that are clad in wood or cellular PVC.

KEY FEATURES

- Intended for use on wood or cellular PVC clad and metal applications.
- J-Bolt is 8-1/2" overall (will fit 5-1/2" through – max.)
- Barrel Bolt is 6" tall
- 3/4" dia. pin.
- Sold in pairs.
- Manufactured from 304 stainless steel.
- Available in polished stainless steel only.

INSTALLATION SPECS

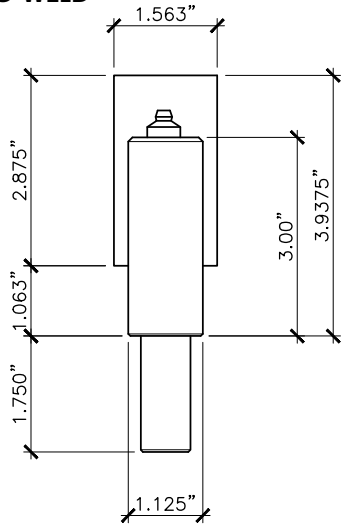
- Ideally used for welded applications of ornamental or clad gates with steel frames.
- Versatile installation – can be used in a variety of ways.
- Barrel type minimum 1-7/8" between the gate and the post.
- J-Bolt type minimum 3-1/4" between the gate and the post.

ORDERING INFORMATION

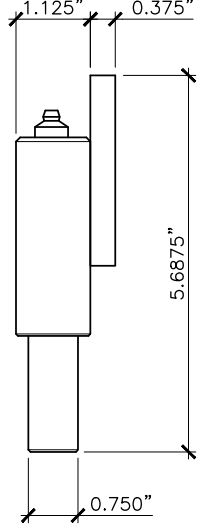
Description	Product Code
Stainless Steel Greased Ball Bearing Hinges - Weld to Weld (Pair)	9100-BHSS
Stainless Steel Greased Ball Bearing Hinges - J Bolt to Weld (Pair)	9100-JBSS



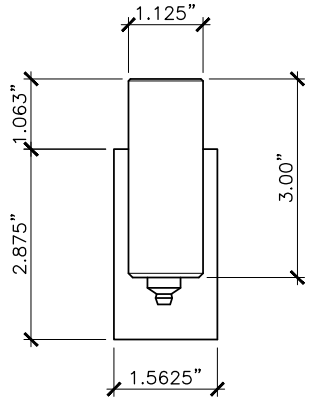
WELD TO WELD



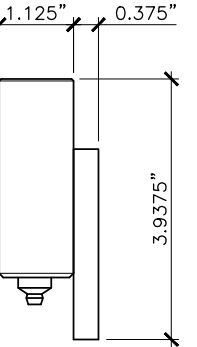
FRONT



SIDE



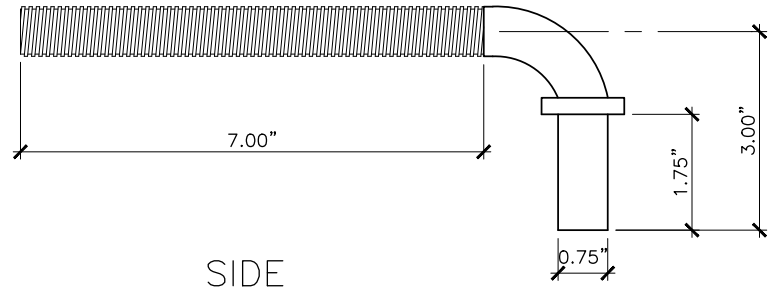
FRONT



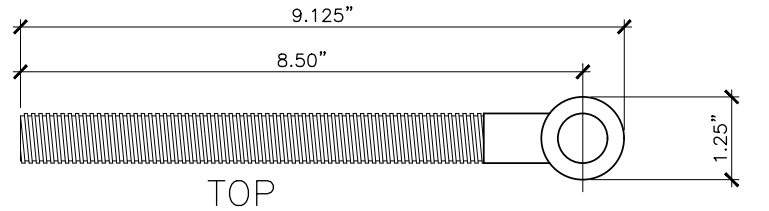
SIDE



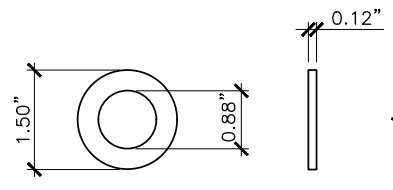
J BOLT TO WELD



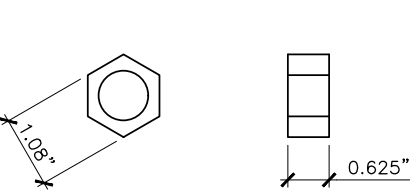
SIDE



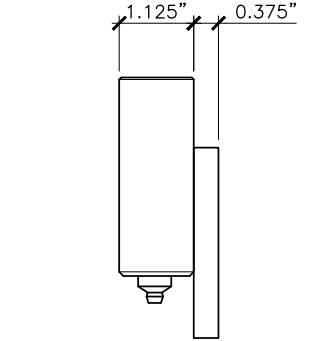
TOP



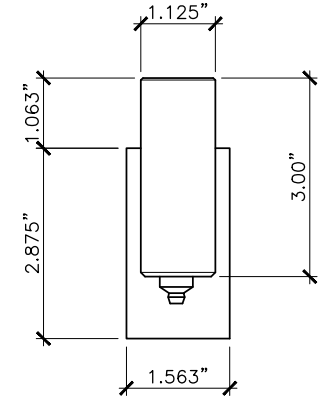
WASHER X2



NUT X2



SIDE



FRONT

LOCKABLE ‘MAMMOTH’ CANE BOLT



Our ‘Mammoth’ Cane Bolt is an incredibly heavy duty, 36” drop bolt that allows for a maximum 16” drop and is lockable.

KEY FEATURES

- Intended to secure wood double gate or door applications.
- Bolt is 7/8” dia. rod.
- Available in 36” length only.
- Sold individually.
- Manufactured from steel.
- Available in Hot Dipped Galvanized or Black (BPPCG) finishes.★
- Color matched lag bolts (2” x 5/16”) included.
- Can be locked with addition of a padlock (not included).

INSTALLATION SPECS

- Easy left or right hand installation.
- Amount of drop is easily adjusted by simply positioning the locking retainer.
- Includes a separate locking retainer which can be mounted left or right.
- Use it horizontally with our Latch Keeper (5000-01) for an ultimate slide bolt latch for double gates or dumpster enclosures.

ORDERING INFORMATION

Description	Product Code	
	Black (BPPCG)	Hot Dip Galv.
Lockable ‘Mammoth’ Cane Bolt	5000-36SP	5000-362
Lockable ‘Mammoth’ Cane Bolt Keeper	5000-01SP	5000-012



★BPPCG = Black Polyester Powder Coat over Galvanize. Please see pages 90-91 for more information.

LOCKABLE CANE BOLT

Our heavy duty Lockable Cane Bolt is made with 5/8” dia. rod and available in 3 different lengths. Its single-piece, slide bolt design makes it an excellent option for heavier gate installations as it can be easily through-bolted for greater durability. Cane Bolts are also supplied with a padlock-able bracket so you can lock your gates, if desired.

KEY FEATURES

- Intended to secure double gate and door applications.
- Bolts are 5/8” dia. rod.
- Available in 12” , 15” and 24” lengths.
- Sold individually.
- Manufactured from steel.
- Available in Hot Dipped Galvanized or Black (BPPCG) finishes.★
- Color matched fasteners included.
- Can be locked with the addition of a padlock (not included).
- Separate locking retainer included to allow for right or left handed application.

INSTALLATION SPECS

- 12” model has a 4” drop, 15” model has a 6” drop and the 24” model has a 10” drop.
- Includes a separate locking retainer which allows for easy left or right handed installation.
- Optional escutcheon plate available for horizontal latch use or door jamb applications.
- Optional Latch Keeper available if you would like to use this as a horizontal latch.

ORDERING INFORMATION

Description	Product Code	
	Black (BPPCG)	Hot Dip Galv.
12” Lockable Cane Bolt	5000-12SP	5000-122
15” Lockable Cane Bolt	5000-15SP	5000-152
24” Lockable Cane Bolt	5000-24SP	5000-242
Lockable Cane Bolt Keeper	5000-00SP	5000-002
Lockable Cane Bolt Escutcheon Plate	5000-02SP	5000-022



★BPPCG = Black Polyester Powder Coat over Galvanize. Please see pages 90-91 for more information.



SLIDE BOLT LATCH

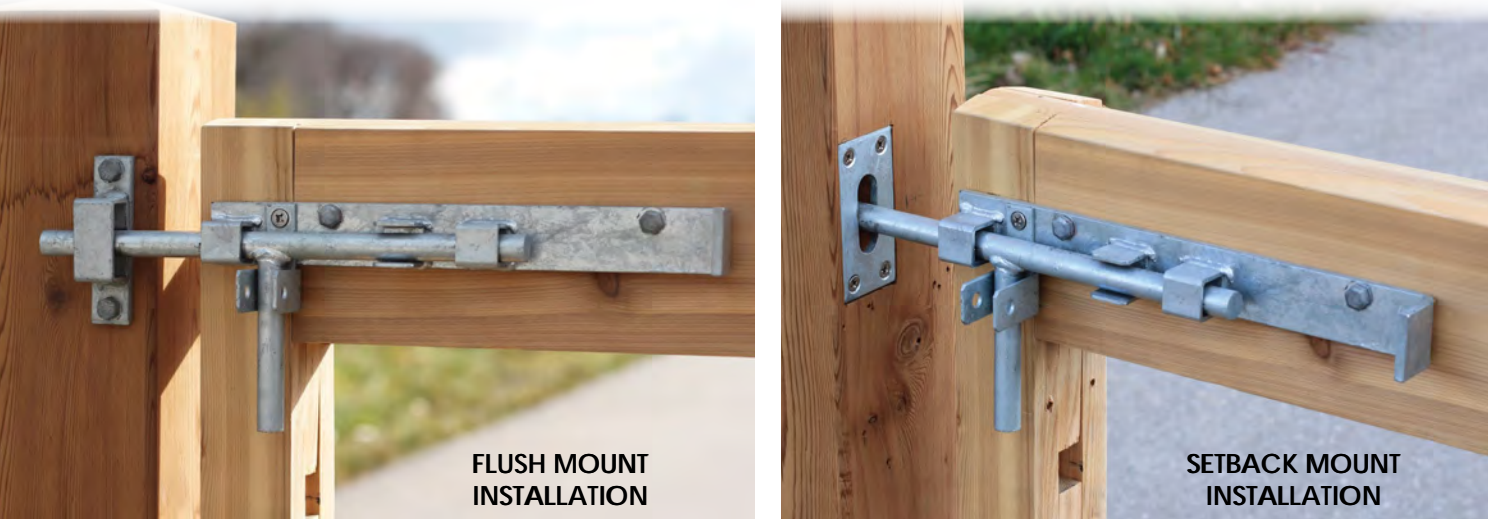
Our **Slide Bolt Latch** combines our 12" and 15" Lockable Cane Bolts with both a Cane Bolt Keeper and a Cane Bolt Escutcheon Plate to create an incredibly versatile and durable latch. The Slide Bolt Latch is ideal for use on large single gates, double gates and/or dumpster enclosures.

- KEY FEATURES
- Intended for use on wood applications.
 - Base plates are 1-1/2" wide by specified length.
 - Bolts are 5/8" dia. rod.
 - Sold individually.
 - Manufactured from steel.
 - Available in Hot Dipped Galvanized or Black (BPPCG) finishes.★
 - Color matched fasteners included.
 - Designed to be padlock ready (padlock not included).

ORDERING INFORMATION

Description	Product Code	
	Black (BPPCG)	Hot Dip Galv.
12" Slide Bolt Latch	5002-L12SP	5002-L122
15" Slide Bolt Latch	5002-L15SP	5002-L152

- INSTALLATION SPECS
- Ideally used anywhere a heavy duty, simple slide bolt is needed.
 - It is supplied with fasteners for wood gates but can easily be adapted for other uses by changing the fasteners.
 - Easily mounts left or right handed.
 - Can be flush mounted or setback mounted (complete with hardware required for both installations).



CABIN HOOK & GATE HOLDBACK



- Cabin Hooks and Gate Holdbacks are perfect for holding gates and doors in an open position.
- KEY FEATURES
- Intended for use on wood applications.
 - Available in 12" and 24" lengths.
 - Sold individually.
 - Manufactured from 1/2" dia. forged steel.
 - Available in both Hot Dipped Galvanized or Black (BPPCG) finishes.★
 - Color matched stainless steel wood screws included.

ORDERING INFORMATION

Description	Product Code	
	Black (BPPCG)	Hot Dip Galv.
12" Cabin Hook and Gate Holdback	4270-12SP	4270-122
24" Cabin Hook and Gate Holdback	4270-24SP	4270-242

★BPPCG = Black Polyester Powder Coat over Galvanize. Please see pages 90-91 for more information.

IRISH GATE LATCH & ESCUTCHEON PLATE

Our **Irish Gate Latch** is modeled after latches commonly used throughout Ireland's countryside. Its operation is simple but very effective. We designed our version to work effectively with the European-style Five Bar Gates, as well as our own Rail Gate Plans (see page 56).

- KEY FEATURES
- Intended for use on wood and vinyl gate applications.
 - Made from 5/8" rod.
 - 16" overall length with a maximum throw/draw of 4-1/2".
 - Sold individually.
 - Manufactured from forged steel.
 - Available in Hot Dipped Galvanized or Black (BPPCG) finishes.★
 - Color matched stainless steel fasteners included.
 - Can be locked in the closed position with the supplied simple cotter pin or you can use a padlock for greater security (padlock not included).

ORDERING INFORMATION

Description	Product Code	
	Black (BPPCG)	Hot Dip Galv.
Irish Gate Latch c/w Escutcheon Plate	8328-00SP	8328-002

- INSTALLATION SPECS
- Ideally used for any open rail gate that will latch to a post.
 - It installs on the inside of gate stile and accommodates varying stile thickness as well as varying gaps between the gate and the post. The rod can be cut down in size if needs be for narrow stile installations.
 - Supplied with our elongated Escutcheon Plate for use as a receiver on the post which will allow for some gate or post movement. It is easily installed by drilling a few holes or routing a slot in the post to receive the bar. The Escutcheon Plate can also be mortised into the post for an ultimate, clean finish.



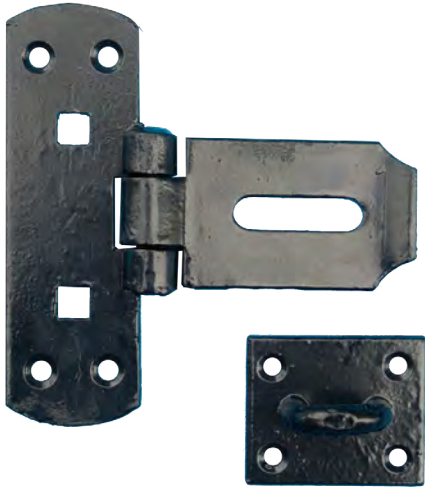
'T' HASP & STAPLE

Simply a heavy duty **'T' Hasp and Staple** latch. The addition of carriage bolts to the square holes of the 'T' Hasp will prevent it being defeated by a screwdriver from the outside as the screws on the staple are covered by the hasp in the locked position.

- KEY FEATURES
- Intended for use on wood applications.
 - 6" x 6" overall size.
 - 2" wide hasp.
 - Sold individually.
 - Manufactured from 3/16" steel.
 - Color matched stainless steel screws included.
 - Padlock not included.

ORDERING INFORMATION

Description	Product Code	
	Black (BPPCG)	Hot Dip Galv.
'T' Hasp and Staple	4000-00SP	4000-002



THROW OVER GATE LOOP



Our **Throw Over Gate Loop** is a simple and effective way to latch two gates together. Primarily used on double rail gates or driveway gate installations, paired with our Double Strap Hinges (8312/8324/8325). This latch operates by flipping over to the secondary gate and bracing it to the first gate.

KEY FEATURES

- Intended for use on wood/vinyl and cellular PVC applications.
- Sold individually.
- Manufactured from forged steel.
- Available in Hot Dipped Galvanized or Black (BPPCG) finishes.★
- Color matched stainless steel fasteners included.
- Can be easily locked with a padlock or clip (not included).

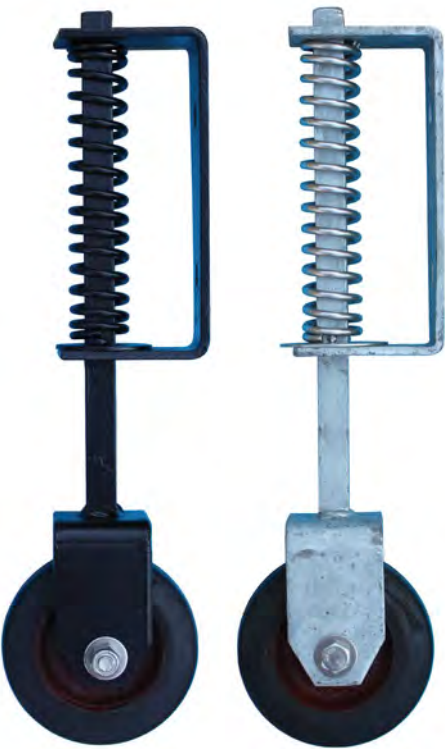
INSTALLATION SPECS

- Ideally used in conjunction with a cane bolt for latching double gate sets in the middle.
- Available in 2 different sizes depending on the thickness of your gate:
 - 3" size fits gates 2-3/4" to 3-1/8" thick
 - 3-1/2" size fits gates 3-1/4" to 3-5/8" thick.

ORDERING INFORMATION

Description	Product Code	
	Black (BPPCG)	Hot Dip Galv.
3" Throw Over Gate Loop	4200-03SP	4200-032
3.5" Throw Over Gate Loop	4200-035SP	4200-0352

HEAVY DUTY GATE WHEEL



Our **Heavy Duty Gate Wheel** facilitates smooth opening/closing movement of a gate and provides some support for heavier gates. It's been designed with care and manufactured with high-quality materials to ensure its durability.

KEY FEATURES

- Intended for use on all gates.
- Overall length is 15" with a 4" dia. wheel.
- Back plate measures 6-1/2" x 2".
- Sold individually.
- Manufactured from steel with a 304 stainless steel spring.
- Available in Hot Dipped Galvanized or Black (BPPCG) finishes.★
- Color matched carriage bolts (2 HDG 3/8" x 4") included (appropriate for gates up to 3" thick).

INSTALLATION SPECS

- For installation, the cotter pin in the 5/8" thick square shaft has to be removed to separate the components and allow for carriage bolts to be installed through the gate.
- Vertical movement of the wheel can be adjusted up to 2" by varying the location of the cotter pin in the spring.

ORDERING INFORMATION

Description	Product Code	
	Black (BPPCG)	Hot Dip Galv.
Gate Wheel	5110-00SP	5110-002

MOUNTED GATE SECURE CHAIN

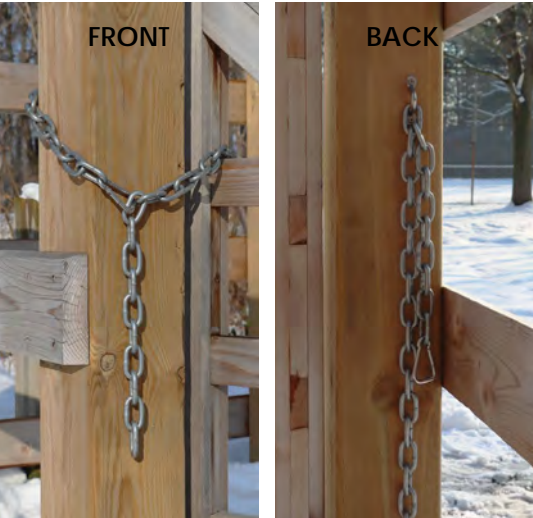
Our **Mounted Gate Secure Chain** is a simple and effective way to secure your gate closed.

KEY FEATURES

- Intended for use on wood rail gates.
- Sold individually.
- 4' of 1/4" Grade 30 HDG chain with stainless steel components.
- Available in both Hot Dipped Galvanized or Black (BPPCG) finishes.
- Color matched stainless steel wood screws (1-1/2" x #8) included.
- Supplied with a separate chain mount to keep the chain off the ground and a stainless steel spring clip to secure the gate.
- Lockable with a padlock (not included).

ORDERING INFORMATION

Description	Product Code	
	Black (BPPCG)	Hot Dip Galv.
Mounted Gate Secure Chain	8329-00SP	8329-002



SPRING GATE LATCH

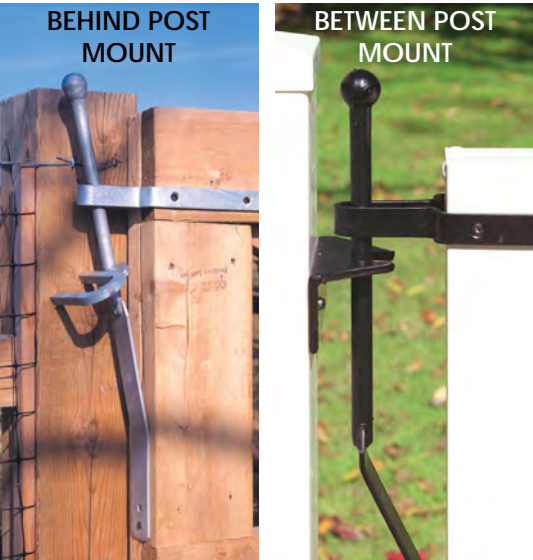
Our **Spring Gate Latch** is an attractive and secure latching mechanism ideal for residential and hobby farm applications.

KEY FEATURES

- Intended for use on wood applications.
- Sold individually.
- Manufactured from forged and spring steel.
- Available in Hot Dipped Galvanized or Black (BPPCG) finishes.★
- Color matched fasteners included.
- 'Behind Post Mount' allows the gate to swing open a full 180° with a clear path (all hardware is out of the way).
- 'Between Post Mount' requires a 4" space between the post and gate.

ORDERING INFORMATION

Description	Product Code	
	Black (BPPCG)	Hot Dip Galv.
Spring Gate Latch – Behind Post Mount	8326-00P	8326-002
Spring Gate Latch – Between Post Mount	8327-00P	8327-002



QUICK CATCH LATCH

Snug Cottage Hardware is thrilled to distribute the **Quick Catch Latch** from GateCatch.com located in the United Kingdom.

KEY FEATURES

- Intended for use on wood, vinyl or cellular PVC gates.
- Sold individually.
- Manufactured from 304 stainless steel.
- Color matched fasteners included.
- Lockable with a padlock from either side (padlock not included).

ORDERING INFORMATION

Description	Product Code	
	Black Powder Coat	Natural Satin
3" Quick Catch Latch	4100-3BSS	4100-3SS
3.5" Quick Catch Latch	4100-35BSS	4100-35SS



★BPPCG = Black Polyester Powder Coat over Galvanize. Please see pages 90-91 for more information.

★BPPCG = Black Polyester Powder Coat over Galvanize. Please see pages 90-91 for more information.

BLACK STAINLESS STEEL WOOD SCREWS



1" x #8 Phillips Drive



1.5" x #8 Phillips Drive



1.5" x #12 Phillips Drive



2" x #12 Phillips Drive



2" x #12 Hex Drive

We offer a selection of **Black Stainless Steel Wood Screws** that are most often used for installation of our hardware.

KEY FEATURES

- Intended for use on wood and cellular PVC applications.
- Manufactured from 18/8 stainless steel.
- Available in Black Polyester Powder Coat finish on the heads.

ORDERING INFORMATION

Description	Product Code	
	100 Qty.	1000 Qty.
1" x #8 Phillips Drive	FP-BSS-8-1C	FP-BSS-8-1M
1.5" x #8 Phillips Drive	FP-BSS-8-15C	FP-BSS-8-15M
1.5" x #12 Phillips Drive	FP-BSS-12-15C	FP-BSS-12-15M
2" x #12 Phillips Drive	FP-BSS-12-20C	FP-BSS-12-20M
2" x #12 Hex Drive	FP-BSSHex-20C	FP-BSSHex-20M

CARRIAGE BOLTS

We offer a selection of **Carriage Bolts** that partner well with our hardware.

KEY FEATURES

- Carriage Bolts:
 - 3/8" dia. carriage bolts.
 - 1/2" dia. carriage bolts.
- 2 nuts, 2 bolts, and 2 washers per package.
- Manufactured from steel.
- Available in Hot Dipped Galvanized, Stainless Steel or Black (BPPCG) finishes. ★

INSTALLATION SPECS

- 3/8" dia. carriage bolts for use with 7" to 16" Old-Fashioned HD Hinges (8292) and Cranked Bands with Pins (8295).
- 1/2" dia. carriage bolts for use with 18" to 36" Old-Fashioned HD Hinges (8292) and Cranked Bands with Pins (8295).
- Use bolts 1" longer than thickness of gate or door.

ORDERING INFORMATION

Length of Bolt	Dia.	Product Code		
		Inches	Inches	Inches
		Black (BPPCG)	Hot Dip Galv.	Stainless Steel
3/8" dia. Carriage Bolts				
2.5	3/8	FP-CB325-B	FP-CB325-G	FP-CB325-SS
3	3/8	FP-CB330-B	FP-CB330-G	FP-CB330-SS
3.5	3/8	FP-CB335-B	FP-CB335-G	FP-CB335-SS
4	3/8	FP-CB340-B	FP-CB340-G	FP-CB340-SS
4.5	3/8	FP-CB345-B	FP-CB345-G	FP-CB345-SS
5	3/8	FP-CB350-B	FP-CB350-G	FP-CB350-SS
5.5	3/8	FP-CB355-B	FP-CB355-G	FP-CB355-SS
6	3/8	FP-CB360-B	FP-CB360-G	FP-CB360-SS
12	3/8	FP-CB3120-B	FP-CB3120-G	FP-CB3120-SS
1/2" dia. Carriage Bolts				
2.5	1/2	FP-CB525-B	FP-CB525-G	FP-CB525-SS
3	1/2	FP-CB530-B	FP-CB530-G	FP-CB530-SS
3.5	1/2	FP-CB535-B	FP-CB535-G	FP-CB535-SS
4	1/2	FP-CB540-B	FP-CB540-G	FP-CB540-SS
4.5	1/2	FP-CB545-B	FP-CB545-G	FP-CB545-SS
5	1/2	FP-CB550-B	FP-CB550-G	FP-CB550-SS
5.5	1/2	FP-CB555-B	FP-CB555-G	FP-CB555-SS
6	1/2	FP-CB560-B	FP-CB560-G	FP-CB560-SS
12	1/2	FP-CB5120-B	FP-CB5120-G	FP-CB5120-SS



BLACK (BPPCG)



HOT DIP GALV.



STAINLESS STEEL

★BPPCG = Black Polyester Powder Coat over Galvanize. Please see pages 90-91 for more information.

BLACK STAINLESS STEEL TEK SCREWS

We offer **Hex Head, Black Stainless Steel TEK Screws** that are most often used for installation of our hardware in PVC and ornamental aluminum applications.

KEY FEATURES

- Hex Head Black Stainless Steel TEK Screws:
 - 1.25" x #12 in quantities of 100 or 1000.
 - 1" x #14 in quantities of 100 or 1000.
- Intended for use on PVC or ornamental aluminum applications.
- Manufactured from stainless steel.

ORDERING INFORMATION

Description	Product Code	
	100 Qty.	1000 Qty.
1.25" x #12 Black SS TEK Screws	FP-TSB-12-1.25HexC	FP-TSB-12-1.25HexM
1" x #14 Black SS TEK Screws	FP-TSB-14-1HexC	FP-TSB-14-1HexM



LAG SCREWS

We offer **Lag Screws** that partner well with some of our hardware.

KEY FEATURES

- Lag Screws:
 - 2" x 5/16" in quantities of 100.
 - 3.5" x 3/8" in quantities of 100.
- Intended for use on wood applications.
- Hot Dipped Galvanized Lag Screws manufactured from steel.
- Black Powder Coated Lag Screws manufactured from stainless steel.

ORDERING INFORMATION

Description	Product Code	
	Black Powder Coat	Hot Dip Galv.
100 Lag Screws (2" x 5/16")	FP-LSB-5/16-2C	FP-LSG-5/16-2C
100 Lag Screws (3.5" x 3/8")	FP-LSB-3/8-3.5C	FP-LSG-3/8-3.5C



BLACK TOUCH-UP PAINT

Our **Black Touch-Up Paint** has been specifically formulated to color match our black powder coat perfectly!

KEY FEATURES

- 0.6 oz. (nail polish sized) bottle c/w applicator brush.
- Sold individually.
- Black acrylic paint color matched to our Black Polyester Powder Coat finish.

INSTALLATION SPECS

Ideally used for carriage bolt and screw heads marred by the rigors of installation. Also great for touching up our hardware if it were to become marred in any way.

ORDERING INFORMATION

Description	Product Code
Black Touch-Up Paint (0.6oz. Bottle)	1200-10B



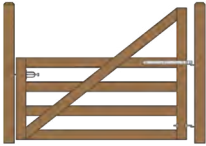
FASTENER PACKS FOR SCH GATE BUILDS

Our **Fastener Packs** include all the Carriage Bolts, Nuts, Washers and stainless steel Wood Screws that you will need to construct the Gate Plans found on our website. Order them with your other hardware so you will conveniently have everything you need in one box when it arrives.

CAPE COD GATE FASTENER PACK



- FASTENER PACK INCLUDES...**
- 18 - 3.5" x 3/8" Carriage Bolts.
 - 18 - 3/8" Washers.
 - 18 - 3/8" Nuts.
 - 50 - 1.75" x #8 stainless steel Wood Screws.



ORDERING INFORMATION

Description	Black (BPPCG)	Hot Dip Galv.
Cape Cod Gate Fastener Pack	FP-CAPECOD-B	FP-CAPECOD-G

DOUBLE V GATE FASTENER PACK



- FASTENER PACK INCLUDES...**
- 14 - 3.5" x 3/8" Carriage Bolts.
 - 15 - 2.5" x 3/8" Carriage Bolts.
 - 29 - 3/8" Washers.
 - 29 - 3/8" Nuts.
 - 50 - 1.75" x #8 stainless steel Wood Screws.



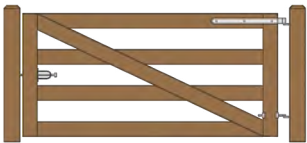
ORDERING INFORMATION

Description	Black (BPPCG)	Hot Dip Galv.
Double V Gate Fastener Pack	FP-DOUBLEV-B	FP-DOUBLEV-G

MAINE GATE FASTENER PACK



- FASTENER PACK INCLUDES...**
- 14 - 3.5" x 3/8" Carriage Bolts.
 - 14 - 3/8" Washers.
 - 14 - 3/8" Nuts.
 - 50 - 1.75" x #8 stainless steel Wood Screws.



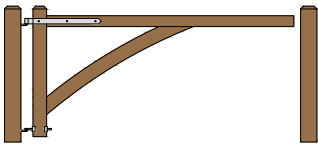
ORDERING INFORMATION

Description	Black (BPPCG)	Hot Dip Galv.
Maine Gate Fastener Pack	FP-MAINE-B	FP-MAINE-G

WELDON BARRIER GATE FASTENER PACK



- FASTENER PACK INCLUDES...**
- 9 - 3.5" x 3/8" Carriage Bolts.
 - 9 - 3/8" Washers.
 - 9 - 3/8" Nuts.
 - 40 - 1.75" x #8 SS Wood Screws.
 - 2 - 3/8" x 4" Dowel Rods.



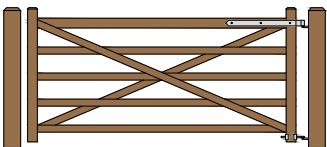
ORDERING INFORMATION

Description	Black (BPPCG)	Hot Dip Galv.
Weldon Barrier Gate Fastener Pack	FP-WELDONBARR-B	FP-WELDONBARR-G

X RAIL GATE FASTENER PACK



- FASTENER PACK INCLUDES...**
- 16 - 3.5" x 3/8" Carriage Bolts.
 - 6 - 2.5" x 3/8" Carriage Bolts.
 - 22 - 3/8" Washers.
 - 22 - 3/8" Nuts.
 - 50 - 1.75" x #8 SS Wood Screws.



ORDERING INFORMATION

Description	Black (BPPCG)	Hot Dip Galv.
X Rail Gate Fastener Pack	FP-XRAIL-B	FP-XRAIL-G

★BPPCG = Black Polyester Powder Coat over Galvanize.
Please see pages 90-91 for more information.



LANDSCAPE POST & CHAIN



Whether directing people through a landscape, defining an area with restricted public access or edging a planting bed, our post and chain is an attractive and unique solution.

BOSTON GARDEN STYLE AND CENTRAL PARK STYLE POST & CAPS



BOSTON GARDEN STYLE

Our **Boston Garden Post** is a full-size reproduction of the handsome posts and caps that line the walkways of America’s oldest park, the Boston Botanical Garden.

Our **Central Park Post** is fashioned after our very popular Boston Garden Post but the cap has been re-designed to provide a more simple, clean esthetic.

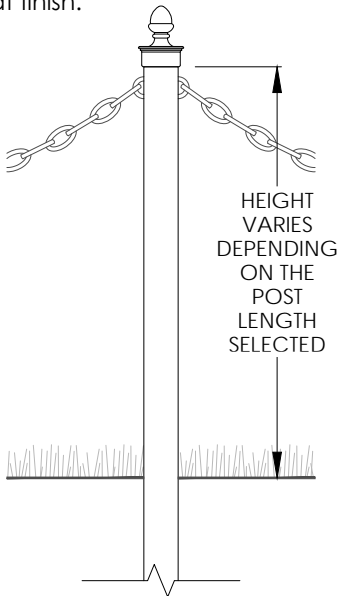
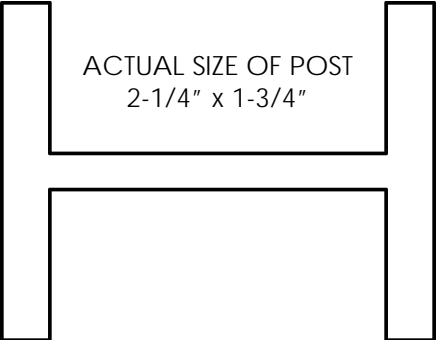
Both posts are aluminum, ensuring that it will never rust and beautify your property for years to come.

KEY FEATURES

- Posts are available in 44" and 60" lengths.
- Posts are sold in combination with a cap.
- Caps are also sold individually.
- Posts are a heavy aluminum extruded 'I' beam.
- Caps are manufactured from cast aluminum.
- Available in Black Polyester Powder Coat finish.

INSTALLATION SPECS

- Ideally used as a physical and esthetic barrier for landscaping purposes.
- Posts are notched to accept the chain making installation of the chain easy once the posts are set.



INSTALLATION SPECS (continued)

- Compatible with 1/4", 5/16", 3/8" Landscape Chain and Victorian Spiked Chain.
- Caps are secured to the post with 2 set screws (included).
- 44" long posts are typically installed with 24" to 26" above ground.
- 60" long posts are typically installed with 36" to 42" above ground.
- For commercial installations, we recommend that each post be set in concrete to a depth that will prevent frost heave.
- We recommend a 6' on center post spacing for commercial installations.

ORDERING INFORMATION

Description	Product Code
Boston Garden Style	
44" Black Boston Garden Style Post and Cap	5200-44P
60" Black Boston Garden Style Post and Cap	5200-60P
Boston Garden Style Cap Only (Black)	5200-00P
Central Park Style	
44" Black Central Park Style Post and Cap	5200-44A
60" Black Central Park Style Post and Cap	5200-60A
Central Park Style Cap Only (Black)	5200-00A



BOSTON GARDEN STYLE



CENTRAL PARK STYLE

POST & CHAIN STARTER KIT



Our **Post and Chain Starter Kit** provides all of the accessories needed to install a single-run of chain (posts and post caps + chain sold separately).

KEY FEATURES

- Starter Kit includes:
 - 2 D Shackles to start and stop the chain.
 - 1 Quick Link to join lengths of chain (if necessary).
 - 1-1/8" Allen Wrench to tighten the post cap set screws (wrench fits a standard multi-head screwdriver).
- Sold individually.
- D Shackles manufactured from forged steel.
- Quick Links are manufactured from 316 stainless steel.

ORDERING INFORMATION

Description	Product Code
Post and Chain Starter Kit (Black)	5200-STARTERKIT

ACCESSORY PACKS

Our **Post and Chain Accessory Pack for Double Chain** allows for a second string of chain to be added creating a truly unique and distinctive garden or walkway edging. Accessory Kit includes 2 Links to Screw, 2 Bolts, Nuts and Lock Washers.

NEW PRODUCT

Our **Post and Chain Accessory Pack for 90° Corners** allows for our Boston or Central Park Posts to turn a 90° or right-angle corner. This accessory fastens to the outside corner of a standard "line" post allowing you to turn your post installation 90°. Accessory Kit includes 1 Link to Screw, 2 Bolts, Nuts and Lock Washers.

ORDERING INFORMATION

Description	Product Code
Post and Chain Accessory Pack for Double Chain (Black)	5200-2CBSS
Post and Chain Accessory Pack for 90° Corners (Black)	5200-90Corner



LANDSCAPE CHAIN

Our **Landscape Chain** is black polyester powder coated over hot dipped galvanized which produces a rich looking final product that will not rust. When used as part of a post and chain barrier system or landscape feature, it provides a quality looking finish that will endure for years to come.

KEY FEATURES

- Available in 3/16", 1/4", 5/16" and 3/8" wire dia.
- 1/4", 5/16" and 3/8" chain is suitable for use with our Boston Garden Posts and Central Park Posts.
- 3/16" chain can be used for lighter residential applications.
- Sold by linear foot.
- Manufactured from forged steel.
- Available in Black (BPPCG) finish.★

ORDERING INFORMATION

Description	Product Code
3/16" x 1" Landscape Chain	3429-18P
1/4" x 1.25" Landscape Chain	3429-21P
5/16" x 1.279" Landscape Chain	3429-23P
3/8" x 1.375" Landscape Chain	3429-24P

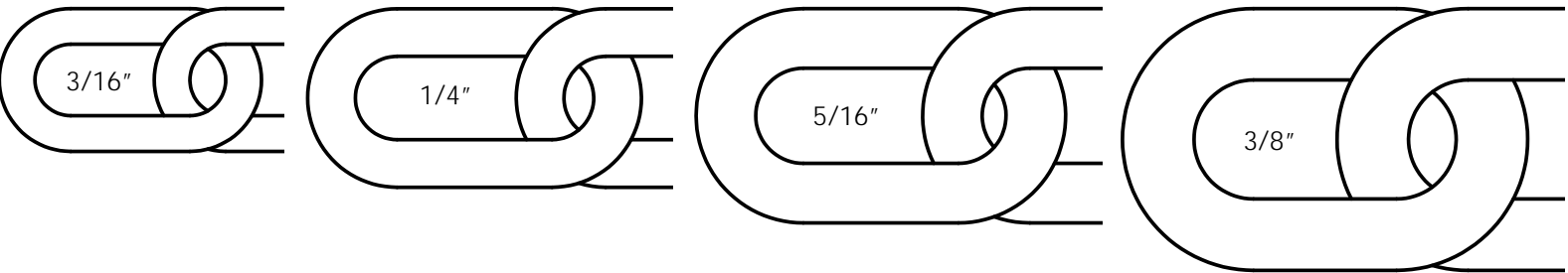
THERE ARE NO RETURNS OR REFUNDS ON CHAIN ONCE IT HAS BEEN CUT.

INSTALLATION SPECS

- 3/16" chain is only recommended for light duty applications, such as residential installations.
- 1/4" chain is the minimum size recommended for commercial applications, with a maximum post spacing of 6'.
- When installing chain between posts as a landscape edging add 10% extra chain length to the linear footage measured to allow for a swag or droop of the chain between the posts.
- 3/16" – maximum UPS Length is 125', and maximum available single length is 1000'
- 1/4" – maximum UPS Length is 75', and maximum available single length is 800'
- 5/16" – maximum UPS Length is 55', and maximum available single length is 550'
- 3/8" – maximum UPS Length is 35', and maximum available single length is 400'
- UPS length limits to 50 pounds per box.
- Maximum available chain lengths must be sent motor freight (extra charges may apply).

CHAIN SIZES

Outlines below show actual size. Size refers to the diameter of the wire used to fabricate the chain.



VICTORIAN SPIKED CHAIN

In Victorian England, spikes were welded into chain to discourage loiterers. Today, **Victorian Spiked Chain** is typically used for esthetic purposes and is commonly seen throughout the U.K. adorning estates, parks and monuments. Similar to our regular chain selection, the Victorian Spiked Chain is also black polyester powder coated over hot dipped galvanized which produces a rich finish that will not rust.

KEY FEATURES

- Available in 1/4" wire dia. only with spikes welded into every-other link.
- Is suitable for use with our Boston Garden Posts and Central Park Posts.
- Sold by linear foot.
- Manufactured from forged steel.
- Available in Black (BPPCG) finish.★

ORDERING INFORMATION

Description	Product Code
Victorian Spiked Chain (Black)	3827-06P

THERE ARE NO RETURNS OR REFUNDS ON CHAIN ONCE IT HAS BEEN CUT.



CHAIN FITTINGS & ACCESSORIES

Chain Fitting & Accessories		D Shackle		Staple on 2" Square Plate		Hook on 2" Square Plate		Heavy Duty Link to Screw		Light Duty Link to Screw		Quick Link		Swivel Eye Snap Link		Forged Screw Eye	
Product Images c/w Dimensions																	
Finishes		Black (BPPCG)		Hot Dip Galv.		Black (BPPCG)		Hot Dip Galv.		Black Powder Coating over 316 Stainless Steel		Black Powder Coating over 316 Stainless Steel		Black Powder Coating over 316 Stainless Steel		Black Powder Coating over 304 Stainless Steel	
Chain Types	3429-18P (3/16")	3214-21P	3214-212	3487-00SP	3487-002	3486-00SP	3486-002	N/A	N/A	3484-B316	3036-21P	3037-23P	3037-23P	3037-23P	3037-23P	3488-00P	3488-00P
	3429-21P (1/4")	3214-21P	3214-212	3487-00SP	3487-002	3486-00SP	3486-002	N/A	N/A	3484-B316	3036-21P	3037-23P	3037-23P	3037-23P	3037-23P	3488-00P	3488-00P
	3429-23P (5/16")	3214-23P	3214-232	3487-37SP	3487-372	3486-00SP	3486-002	3485-00SP	3485-002	3484-B316	3036-23P	3037-23P	3037-23P	3037-23P	3037-23P	3488-00P	3488-00P
	3429-24P (3/8")	3214-24P	3214-242	3487-37SP	3487-372	N/A	N/A	3485-00SP	3485-002	N/A	3036-24P	3037-23P	3037-23P	3037-23P	3037-23P	3488-00P	3488-00P
	Victorian (1/4")	3214-21P	3214-212	3487-00SP	3487-002	3486-00SP	3486-002	3485-00SP	3485-002	3484-B316	3036-21P	3037-23P	3037-23P	3037-23P	3037-23P	3488-00P	3488-00P
Installed Photos																	

HITCHING POST RING ON RECTANGULAR PLATE



Historically, horses were tethered to hitching posts to prevent them from wandering away. In current times, our **Hitching Post Ring on Rectangular Plate** is often used as a decorative accent or to tie rope or Landscape Chain to posts or buildings. They are great way to create an old-world look.

KEY FEATURES

- Intended for use on wood applications.
- 3-1/2" OD ring made from 3/8" stock mounted on a 2" x 4-1/4" rectangular plate.
- Manufactured from forged steel.
- Color matched lag screws included.

ORDERING INFORMATION

Description	Product Code	
	Black (BPPCG)	Hot Dip Galv.
Hitching Post Ring on Rectangular Plate	3900-00SP	3900-002

★BPPCG = Black Polyester Powder Coat over Galvanize. Please see pages 90-91 for more information.

HITCHING POST RING ON SCREW

Our **Hitching Post Ring on Screw** is often used as a decorative accent or to tie rope or Landscape Chain to posts or buildings. They are great way to create an old-world look.

KEY FEATURES

- Can be used on wooden posts or installed in granite posts using epoxy.
- 3-1/2" OD ring made from 3/8" wire attached to 3/8" x 4-1/2" lag screw eye with 3" of thread.
- Manufactured from forged steel.

ORDERING INFORMATION

Description	Product Code	
	Black (BPPCG)	Hot Dip Galv.
Hitching Post Ring on Screw	3901-00P	3901-002

★BPPCG = Black Polyester Powder Coat over Galvanize. Please see pages 90-91 for more information.



Customer Projects



We love to see our Customer's projects!
Please share photos with us when your project is complete.



Photo courtesy of Pelletieri Associates, Inc.

PVC + CONVENTIONAL HARDWARE

A collection of superior-quality hardware intended for use on vinyl-pvc, wood and aluminum gates, that is designed for easy installation and adjustment as well as produced from materials that won't rust.

STAINLESS STEEL HARDWARE FOR PVC & VINYL GATES

ADJUSTABLE OLD-FASHIONED HINGE

Our Adjustable Old-Fashioned Hinges feature a traditional design style that compliments and enhances the beautiful New England fence designs that are so popular within the fencing industry.

KEY FEATURES

- Esthetically pleasing traditional hardware designed for superior performance on PVC and vinyl.
- Available in 9" and 12" lengths.
- Sold in pairs.
- Manufactured from 304 stainless steel.
- Available in Black Polyester Powder Coat finish.
- Stainless steel TEK fasteners included.
- Also supplied with 5" x 1/4" black stainless steel carriage bolts, acorn nuts, and washers for use on gates up to 4" thick.

INSTALLATION SPECS

- The supplied 1/4" x 5" carriage bolts will accommodate a gate up to 4" thick. Bolts will need to be cut if you have a narrower gate.
- Slotted strap for easy adjustment (adjusts 1/2" either way of a 1" gap between gate and post).
- Easy to install: gate sandwiched between straps offers strength and support (gate post and gate stile insert recommended).
- Filler blocks are required if rails are thinner than stiles (the use of solid cellular material such as Azek is recommended).

ORDERING INFORMATION

Description	Product Code
9" Black Adjustable Old-Fashioned Hinge (Pair)	8292-09PSS
12" Black Adjustable Old-Fashioned Hinge (Pair)	8292-12PSS

INSTALLATION INSTRUCTIONS

1.

PLACE FIRST STRAP BACK PLATE SO BEND HOOKS AROUND EDGE OF POST AND IS CENTERED ON RAILS. ATTACH BACK PLATE AND BLOCK USING SCREWS.

2.

USING A 5/16" BIT, DRILL THREE PERPENDICULAR HOLES AT LEAST HALF WAY THROUGH THE THICKNESS OF THE GATE.

3.

FLIP GATE OVER. ATTACH SECOND BACK PLATE ON BACKSIDE AT THE SAME LEVEL AS THE FIRST BACK PLATE. DRILL HOLES AS IN STEPS #1 AND 2.

4.

ATTACH THE STRAP WITH PINS TO FRONT OF GATE USING CARRIAGE BOLTS. PASS BOLTS THROUGH STRAP, BOTH BACK PLATES AND SECURE WITH WASHERS + NUTS.

TWISTED RING GATE LATCH

Our **Twisted Ring Latch** is a design that endures! This version has been developed specifically for use on PVC and vinyl applications with wrap-around components for secure fastening.

KEY FEATURES

- Esthetically pleasing traditional hardware designed for superior performance on PVC and vinyl.
- Rosette measure 2-1/4" dia.
- Ring measures 3" across and is 1/2" diameter.
- Latching bar is 6" long.
- Sold individually.
- Manufactured from a combination of stainless steel (bar, retainer and catch) and zinc/aluminum alloy (ring and rosette).
- Available in Black Polyester Powder Coat finish.
- Stainless steel TEK fasteners included.
- Can be combined with Padlock Eyes if locking is required.

INSTALLATION SPECS

- Operates from both sides, like a door knob.
- Allows for either a left or right handed installation.
- Easy to install, requiring only a single 3/4" round hole.
- Intended for use on gates up to 5" thick (with standard key stock provided).

ORDERING INFORMATION

Description	Product Code
Black Twisted Ring Gate Latch	4149-P6SP
Black Twisted Ring Gate Latch c/w Padlock Eyes & Screws	4149-PESP



HAMPTON THUMB LATCH

Our **Hampton Thumb Latch** is fashioned on an old Pennsylvania design that dates back to the late 1800's. It is simple to operate, made of high quality materials and comes with a unique cam lock to easily lock people out of your back yard. It's built for yard-swing gates and ideal for privacy fences.

KEY FEATURES

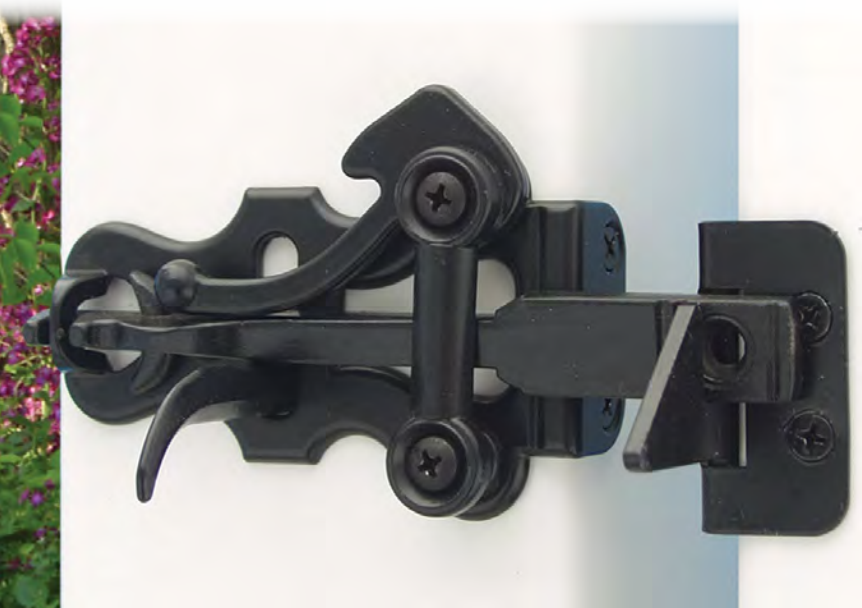
- Esthetically pleasing traditional hardware designed for superior performance on PVC and vinyl.
- 7" tall ornate handle.
- 5-1/2" cast stainless steel bar.
- Ornate, flip-over mechanical locking mechanism.
- Sold individually.
- Manufactured from stainless steel and zinc aluminum alloy.
- Available in Black Polyester Powder Coat finish.
- Stainless steel TEK fasteners included.
- Product will not rust.
- Can be combined with Padlock Eyes if locking is required.

INSTALLATION SPECS

- Ideally used for privacy style fences that swing into your back yard (yard-swing).
- Operates from both sides.
- Allows for either a left or right handed installation.
- Latch design functions with a 1" maximum gap between gate and post.
- Easy to install, requiring only a single 3/4" round hole.
- Short thumb bar included for gates up to 3" thick.
- Long thumb bar included for gates 3-1/4" to 5" thick.

ORDERING INFORMATION

Description	Product Code
Black Hampton Thumb Latch	4300-PSP
Black Hampton Thumb Latch c/w Padlock Eyes & Screws	4300-PSEP



ADJUSTABLE SELF-CLOSING HINGE
FOR SQUARE POSTS OR WELDED GATES

Our **Adjustable Self-Closing Hinges for Square Posts or Welded Gates** are designed for residential use, feature a wrap-around post and gate mount design and are self-closing with adjustable tension.

- KEY FEATURES**
- Intended for use on PVC or vinyl gates up to 48" wide x 72" tall.
 - 3-1/4" wide x 3-1/2" high.
 - Sold in pairs.
 - Manufactured from 304 stainless steel.
 - Available in Black or White Polyester Powder Coat finishes.
 - Hex Drive stainless steel TEK fasteners included.

ORDERING INFORMATION

Description	Product Code	
	Black Powder Coat	White Powder Coat
Adjustable Self-Closing Standard Hinge (Pair)	8100-BPSS	8100-WPSS



- INSTALLATION SPECS**
- Ideally used for hollow core vinyl or PVC gates that are up to 48" wide and 72" tall.
 - Easy left or right hand installation.
 - Set the amount of closing tension on your gate by adjusting the spring.
 - Always apply the tension evenly over all the hinges on a gate for long lasting results.
 - Spring may be left with no tension if self-closing is not required.

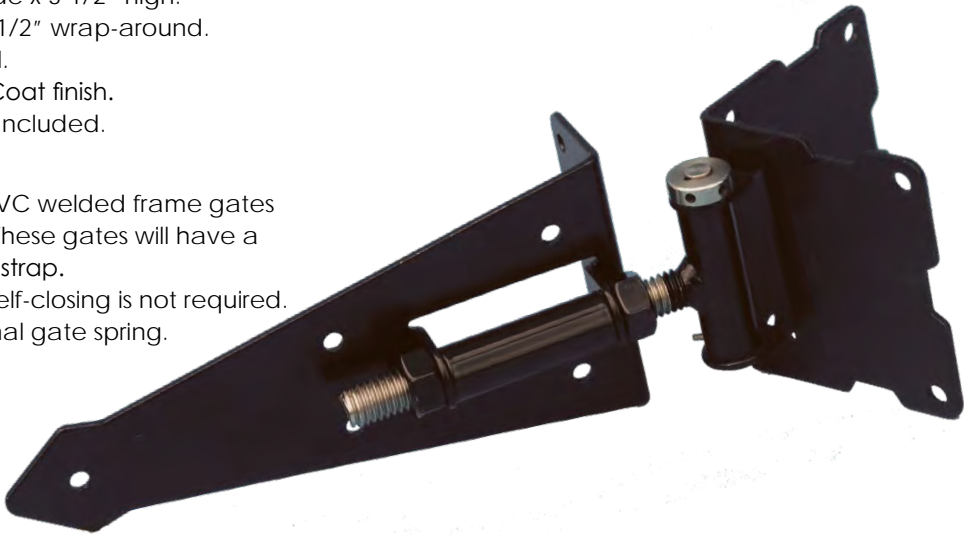
ADJUSTABLE SELF-CLOSING WRAP-AROUND HINGE
FOR WELDED GATES

Our **Adjustable Self-Closing Wrap-Around Hinges for Welded Gates** are designed for residential use, feature a wrap-around post design and are self-closing with adjustable tension.

- KEY FEATURES**
- Intended for use on PVC or vinyl gates up to 48" wide x 72" tall.
 - Sold in pairs.
 - Wrap-around post mount is 3-1/4" wide x 3-1/2" high.
 - Strap is 8" long x 3-1/2" high with a 1-1/2" wrap-around.
 - Manufactured from 304 stainless steel.
 - Available in Black Polyester Powder Coat finish.
 - Hex Drive stainless steel TEK fasteners included.

ORDERING INFORMATION

Description	Product Code
Black Adjustable Self-Closing Wrap Around Hinge (Pair)	7400-BPSS



- INSTALLATION SPECS**
- Ideally used for hollow core vinyl or PVC welded frame gates that are up to 48" wide and 72" tall. These gates will have a sufficient mounting surface for the 8" strap.
 - Spring may be left with no tension if self-closing is not required.
 - Heavy gates may require an additional gate spring.

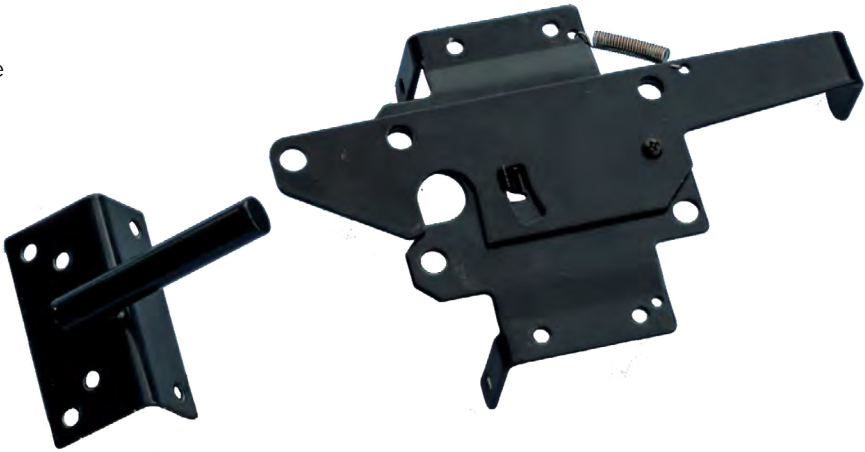
AUTO-CLOSING STANDARD LATCH

Our **Auto-Closing Standard Latch** is similar to other products you may have seen elsewhere in the fencing industry but manufactured from 304 stainless steel to ensure it won't rust. Its spring loaded to ensure it catches and lockable from the front side.

- KEY FEATURES**
- Intended for use on PVC or vinyl gates.
 - 5-1/2" tall and 9" long overall.
 - Sold individually.
 - Manufactured from 304 stainless steel.
 - Available in Black or White Polyester Powder Coat finishes.
 - Hex Drive stainless steel TEK fasteners included.

ORDERING INFORMATION

Description	Product Code	
	Black Powder Coat	White Powder Coat
Auto-Closing Standard Latch	8200-BPSS	8200-WPSS



- INSTALLATION SPECS**
- Ideally used for latching single or double gate installations of hollow core vinyl or PVC.

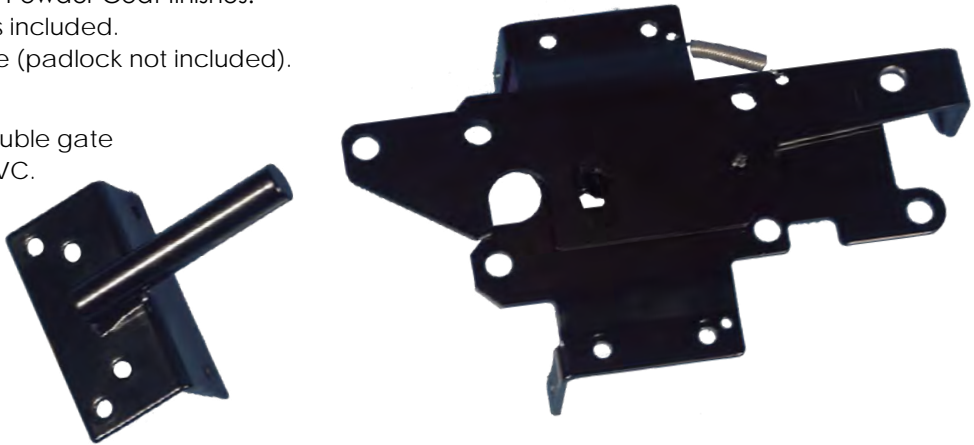
AUTO-CLOSING EXTENDED LATCH

Our **Auto-Closing Extended Latch** is similar to other like products you may have seen but manufactured from 304 stainless steel to ensure it won't rust. It's spring loaded to ensure it catches and is lockable from both sides of the gate on up to a 5" post.

- KEY FEATURES**
- Intended for use on PVC or vinyl gates in combination with up to a 5" post.
 - 5-1/2" tall and 9" long overall.
 - Sold individually.
 - Manufactured from 304 stainless steel.
 - Available in Black or White Polyester Powder Coat finishes.
 - Hex Drive stainless steel TEK fasteners included.
 - Lockable from both sides of the gate (padlock not included).

ORDERING INFORMATION

Description	Product Code	
	Black Powder Coat	White Powder Coat
Auto-Closing Extended Latch	8300-BPSS	8300-WPSS



- INSTALLATION SPECS**
- Ideally used for latching single or double gate installations of hollow core vinyl or PVC.

CANE BOLT WITH SEPARATE RETAINER



Our wrap-around **Cane Bolt with Separate Retainer** for use on PVC and vinyl gates is made with 5/8" dia. rod and available in 3 different lengths. It features a multi-piece design so you can easily adjust and set the amount of drop you require. It comes with a separate retainer to hold the bolt in the up position making it easier to use. Cane Bolts are also supplied with a padlock-able bracket so you can lock your gates, if desired.

KEY FEATURES

- Intended to secure PVC or vinyl double gate or door applications.
- Bolts are 5/8" dia. rod.
- 24" and 36" lengths available in 304 stainless steel with a Black or White Polyester Powder Coat finish.
- 42" length available in 304 stainless steel with a black polyester powder coat finish.
- Sold individually.
- Hex Drive stainless steel TEK fasteners included.
- Supplied with separate padlock-able bracket which can be installed, if desired (padlock is not included).

INSTALLATION SPECS

- Easy left or right hand installation.
- Amount of drop is easily adjusted.
- Separate bar retainer makes it user-friendly.

ORDERING INFORMATION

Description	Product Code	
	Black Powder Coat	White Powder Coat
24" Cane Bolt for PVC and Vinyl Gates	4096-BP24	4096-WP24
36" Cane Bolt for PVC and Vinyl Gates	4096-BP36	4096-WP36
42" Cane Bolt for PVC and Vinyl Gates	4096-BP42	N/A



GATE STOP

Using a **Gate Stop** will ensure your gate stops in the correct position every time. They are used to prevent damage from forceful closing (slamming and windblown) of both the latch and hinges in a gate installation.

KEY FEATURES

- Intended for use on PVC or wood single and double gate applications.
- "T" profile with each wing being 1-1/2" wide.
- Sold individually.
- Manufactured from 1/8" thick 304 stainless steel.
- Available in Black Polyester Powder Coat finish.
- Phillips Drive stainless steel TEK fasteners included.

ORDERING INFORMATION

Description	Product Code
Black Gate Stop for PVC Gates	1400-PSS



BRUTUS TORSION GATE SPRING

The **Brutus Torsion Gate Spring** is designed to apply a "torsion" force to your gate and close it. When installed correctly, the act of opening the gate will wind and/or twist the spring, and when you let go of the gate, the spring will return to its resting position.

KEY FEATURES

- Unique and effective self-closing gate mechanism.
- Intended for use on PVC flush mounted gate and door applications.
- Welded at both ends so that it will not fail.
- 15-1/2" overall length (spring measures 1-1/8" dia. x 10-1/2" long).
- Sold individually.
- Manufactured from 304 stainless steel.
- Hex Drive stainless steel TEK fasteners included.

ORDERING INFORMATION

Description	Product Code
Black Brutus Torsion Gate Spring for PVC Gates	4612-BPSS



STAINLESS STEEL HANDLE

Our rugged **Stainless Steel Handle** is 10" long with a black polyester powder coat finish. This Handle is ideal for use with either of our Heavy Duty Gravity Catches (4120) for wood applications or standard latches for PVC applications.

KEY FEATURES

- Intended for use with our Heavy Duty Gravity Catches for wood applications or any of our standard latches for PVC.
- 10" tall handle intended for both wood and PVC gates or doors.
- Sold individually.
- Manufactured from 304 stainless steel.
- Available in Black Polyester Powder Coat finish.
- Color matched black stainless steel fasteners for wood and PVC incl.

ORDERING INFORMATION

Description	Product Code
Black Stainless Steel Handle for PVC Gates	4130-BSS



STAINLESS STEEL HARDWARE FOR ORNAMENTAL ALUMINUM GATES

ADJUSTABLE SELF-CLOSING HINGE

Our **Adjustable Self-Closing Hinges** are designed for residential use, feature a wrap-around post design and are self-closing with adjustable tension.

KEY FEATURES

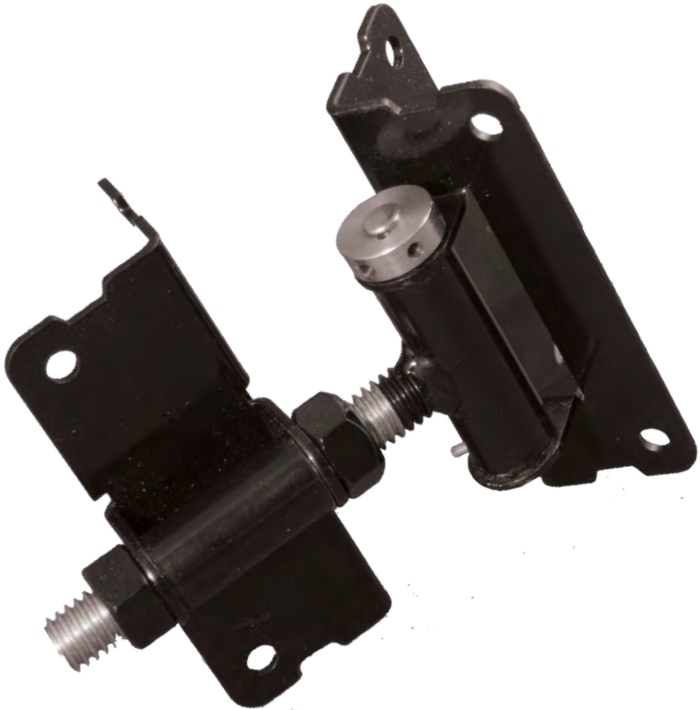
- Intended for use on ornamental aluminum gates up to 48" wide x 72" tall.
- Each wing is 1-1/2" wide x 4" high.
- Sold in pairs.
- Manufactured from 304 stainless steel.
- Available in Black Polyester Powder Coat finish.
- Hex Drive stainless steel TEK fasteners included.

INSTALLATION SPECS

- Suitable for use on ornamental aluminum walkway sized gates.
- Can be used on posts as narrow as 1-1/2" thick.

ORDERING INFORMATION

Description	Product Code
Black Adjustable Self-Closing Hinge for Aluminum Gates (Pair)	3100-BPSS



AUTO-CLOSING LATCH

Our **Auto-Closing Latch** for ornamental aluminum gates is similar to other like products you may have seen but manufactured from 304 stainless steel to ensure it won't rust. Its spring loaded to ensure it catches and lockable from the front side.

KEY FEATURES

- Intended for use on ornamental aluminum gates up to 48" wide x 72" tall.
- 6-1/4" long x 4" high.
- 2-1/2" bar length.
- Suited for 1-1/2" to 2-1/2" posts.
- Sold individually.
- Manufactured from 304 stainless steel.
- Available in Black Polyester Powder Coat finish.
- Hex Drive stainless steel TEK fasteners included.
- Lockable with a padlock from the front side (padlock not included).

INSTALLATION SPECS

- Suitable for use on ornamental aluminum walkway sized gates.
- Can be used on posts as narrow as 1-1/2" thick.

ORDERING INFORMATION

Description	Product Code
Black Auto-Closing Latch for Aluminum Gates	3200-BPSS



CANE BOLT

Our **Cane Bolt** for use on ornamental aluminum gates is made with 5/8" dia. rod and is available in 2 different lengths. The design incorporates 2 wrap-around guide brackets for strength that can easily be switched for left or right hand installations. It features a multi-piece design so you can easily adjust and set the amount of drop you require. It comes with a separate retainer to hold the bolt in the up position making it easier to use. Cane Bolts are also supplied with a padlock-able bracket so you can lock your gates, if desired.

KEY FEATURES

- Intended to secure ornamental aluminum double gate or door applications.
- Bolts are 5/8" dia. rod.
- 24" and 36" lengths available in 304 stainless steel with a Black Polyester Powder Coat finish.
- Sold individually.
- Hex Drive stainless steel TEK fasteners included.

INSTALLATION SPECS

- Easy left or right hand installation.
- Amount of drop is easily adjusted.
- Separate bar retainer makes it user-friendly.
- Fits a 1-1/2" or larger gate stile.

ORDERING INFORMATION

Description	Product Code
24" Black Cane Bolt for Ornamental Aluminum Gates	3096-24SS
36" Black Cane Bolt for Ornamental Aluminum Gates	3096-36SS



STAINLESS STEEL HARD WARE FOR WOOD GATES

SELF-CLOSING 'T' HINGES WITH WRAP-AROUND STRAP



It's all in the name...a stainless steel, **Self-Closing 'T' Hinge with Wrap-Around Strap** intended for use with wood gates and fence projects.

KEY FEATURES

- Self-closing hinge with adjustable tension, intended for residential use.
- Intended for use on wood gates up to 48" wide x 72" high.
- 10" wide by 7-1/2" high (8" long x 3-1/2" wide strap on gate with 1-1/2" wrap-around at edge of gate).
- Sold in pairs.
- Manufactured from 304 stainless steel.
- Available in Black Polyester Powder Coat finish.
- Color matched stainless steel wood screws (2" x #12) included.

ORDERING INFORMATION

Description	Product Code
Black Self-Closing 'T' Hinges with Wrap-Around Strap (Pair)	7100-BPSS

HEAVY DUTY FLOATING GRAVITY CATCH

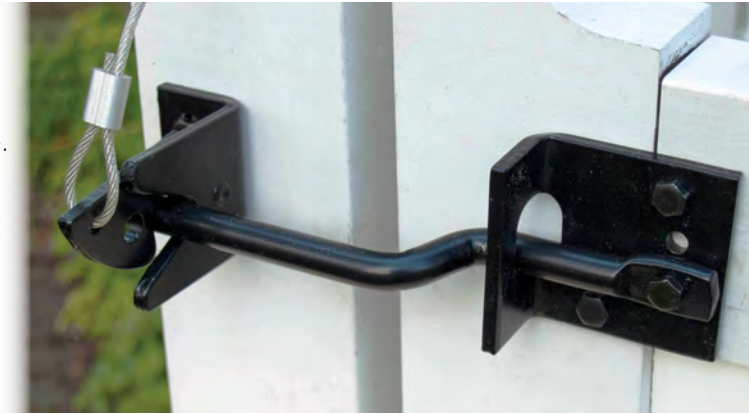
We drew inspiration from the conventional **Heavy Duty Floating Gravity Catch** that can be purchased at most hardware retailers, but manufactured our version using 5.5mm (almost 1/4") thick stainless steel to provide an exceptional quality product intended for heavy-duty use.

KEY FEATURES

- Intended for use on wood single, flush mounted gates.
- 1/2" dia. x 8" long bar.
- Manufactured from 304 and 316 stainless steel.
- Heavy plastic-coated stainless steel pull cord and fasteners included.

ORDERING INFORMATION

Description	Product Code	
	Black Powder Coat	Natural Satin
Heavy Duty Floating Gravity Catch	4120-HFSS	4120-HF316



SELF-CLOSING WRAP-AROUND STRAP HINGES



A stainless steel, **Self-Closing Wrap-Around Strap Hinge** intended for use with wood gate and fence projects.

KEY FEATURES

- Self-closing hinge with adjustable tension, intended for residential use.
- Intended for use on wood gates up to 48" wide x 72" high.
- The strap is 8" long x 3-1/2" high with a 1-1/2" wrap-around.
- The wrap-around post mount is 3-1/4" wide x 3-1/2" high.
- Sold in pairs.
- Manufactured from 304 stainless steel.
- Available in Black Polyester Powder Coat finish.
- Color matched stainless steel wood screws (2" x #12) included.

ORDERING INFORMATION

Description	Product Code
Black Self-Closing Wrap-Around Strap Hinge (Pair)	7400-BWSS

HEAVY DUTY FIXED GRAVITY CATCH

We drew inspiration from the conventional **Heavy Duty Fixed Gravity Catch** that can be purchased at most hardware retailers, but manufactured our version using 5.5mm (almost 1/4") thick stainless steel to provide an exceptional quality product intended for heavy-duty use.

KEY FEATURES

- Intended for use on wood single, flush mounted gates.
- 1/2" dia. x 7" long bar.
- Manufactured from 304 and 316 stainless steel.
- Heavy plastic-coated stainless steel pull cord and fasteners included.

ORDERING INFORMATION

Description	Product Code	
	Black Powder Coat	Natural Satin
Heavy Duty Fixed Gravity Catch	4120-HDSS	4120-HD316



THREADED HOOKS & EYES



The **Threaded Hook and Eye** is our most basic hinge. A similar design to those readily available at most hardware retailers, but manufactured using stainless steel to provide an exceptional quality product intended for simple applications.

KEY FEATURES

- Intended for use on residential, wood walkway gates.
- Hook and pin are both 1/2" dia. x 4" long.
- Sold in pairs (2 hooks and 2 eyes).
- Manufactured from 304 stainless steel.
- Available in Black Polyester Powder Coat or Natural Satin finish.

ORDERING INFORMATION

Description	Product Code	
	Black Powder Coat	Natural Satin
Threaded Hooks and Eyes (Pair)	8310-4BSS	8310-4SC

STAINLESS STEEL HANDLE

Our rugged **Stainless Steel Handle** is 10" long with a black polyester powder coat finish. This Handle is ideal for use with either of our Heavy Duty Gravity Catches (4120) for wood applications or standard latches for PVC applications.

KEY FEATURES

- Intended for use with our Heavy Duty Gravity Catches for wood applications or any of our standard latches for PVC.
- 10" tall handle intended for both wood and PVC gates or doors.
- Sold individually.
- Manufactured from 304 stainless steel.
- Available in Black Polyester Powder Coat finish.
- Color matched black stainless steel fasteners for wood and PVC incl.

ORDERING INFORMATION

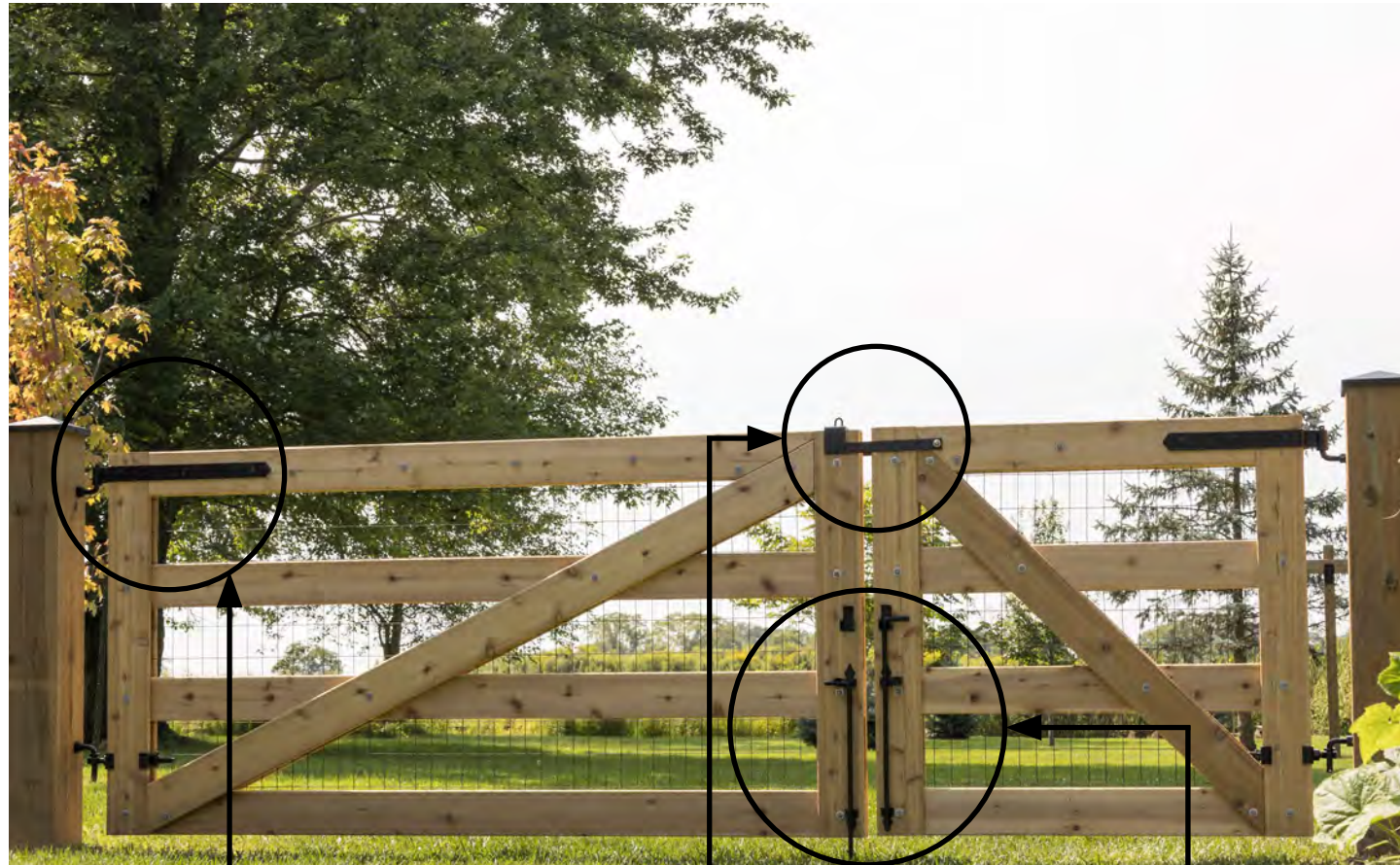
Description	Product Code
Black Stainless Steel Handle for PVC Gates	4130-BSS



What's your style?

Our Hardware Collections group together products with a similar design esthetic and that are intended for use on the same materials (e.g. wood, PVC & vinyl, etc.). Do you prefer historic details, clean lines or simply purpose-driven hardware? We have carefully curated our hardware collections to offer a complete line of hardware to outfit any gate in any style. You're also welcome to mix and match, creating endless possibilities.

Visit snugcottagehardware.com to check out our extensive hardware collections.



HINGES

HEAVY DUTY COLLECTION
(AS SHOWN)
Double Straps with Central Eye (8312)

OR

SIGNATURE COLLECTION
Old-Fashioned Heavy Duty Hinges
(8292)

OR

CONTEMPORARY COLLECTION
Contemporary Cranked Band Hinges
(6295)

LATCHES

HEAVY DUTY COLLECTION
(AS SHOWN)
Throw Over Gate Loop (4200)

OR

SIGNATURE COLLECTION
Twisted Ring Latch
(4149)

OR

CONTEMPORARY COLLECTION
Contemporary Ring Latch
(6149)

CANE BOLTS

HEAVY DUTY COLLECTION
Lockable Cane Bolt
(5000)

OR

SIGNATURE COLLECTION
(AS SHOWN)
Cane Bolt (4096)

OR

CONTEMPORARY COLLECTION
Contemporary Cane Bolt
(6096)



DISTRIBUTED HARDWARE

We are proud to offer a selection of hardware and related products from partners that prioritize quality as much as we do.

BOSTON POST HOLE DIGGER



Our **Boston Post Hole Digger** is great for manually digging holes in looser soils and works wonders for cleaning out the bottoms of power auger drilled holes due to its ability to reach down to 44". Its shape and function also allow you to "bell shape" the bottom of your post holes providing a footing for your posts.

KEY FEATURES

- Height: 71" - Weight: 15 lbs.
- Allows you to dig any diameter hole.
- Suitable for excavating up to 44" deep holes.
- Hardwood handle is depth marked.
- Sold individually.
- Black powder coated steel and urethaned hardwood handle.
- Unique lever action scoop provides maximum digging efficiency.
- Durable steel construction.
- Carbon steel cutting blades.
- Digger blade can cut through roots and debris.
- Ships assembled in 1 box (UPS oversized).

ORDERING INFORMATION

Description	Product Code
Boston Post Hole Digger	E-UNIVOO
Replacement Parts	
Wooden Digger Handle	E-185003V
Tubular Steel Lever Handle	E-203240C
Connecting Rod - Steel Handle to Scoop	E-203245
Digger Blade	E-2480070B
Steel Scoop	E-2480090B
Scoop Casting	E-442001F
Blade Casting	E-443001F



SNUG COTTAGE
Est. 1995
HARDWARE

DOUBLE V GATE
BUILD INSTRUCTIONS
Tapered or Straight Top Rail

INTRODUCTION

In the United Kingdom, this style of gate is typically produced with a tapered top rail, both for the appearance and function of the gate. We show a tapered top rail in the plans for this gate, but if a straight top rail is what you want, the plan can be easily modified to accommodate. The tapered top rail is a nice detail, but it is a bit more effort and will require a bit more time and thought to produce.

A true English "Double V" gate would be constructed with the stiles and top rail made of 3" thick dimensional lumber commonly available in that part of the world. It would use mortise and tenon joints to join the parts together as well as a similar fastening system to what you see in these plans. We have original construction using common materials in North America as well as a simpler way of. We specify common 1" dimensional lumber (or decking lumber) or you could use any other material to 1" thick. The simple joinery and commonly available materials will still produce a gate that will endure for years.

STEP 9

Lay the **third layer** stiles on top of your rails so they are in line with the first layer ones.

STEP 10

Clamp them in place so they can't move and drill a 3/8" hole through the center of each intersection. Fasten each with a 3.5" carriage bolt. While drilling, place a scrap piece of lumber on the back side to reduce tear out as the bit comes through.

STEP 11

Mark center between the two stiles on the top and bottom rails. Clamp a straight edge on these marks to give you a solid reference while making the diagonal pieces of the "V". **Intersect the top rail 1" below the top and extend the bottom of the "V" 1" below the bottom rail. See the plan for pictures and details.**

STEP 12

Use a straight edge to mark the angles of your bracing cuts. Once they are cut and you are happy with how they fit, fasten them in place with 2.5" carriage bolts through the 2nd and 4th rails by drilling through the center of where they intersect. Also, put a "top" screw through a predrilled hole and where it won't be seen later where the "V"s meet the top rail. This will secure them.

STEP 13

Mark the relief cuts in the **third layer** top rail by placing it in line over top of the **center layer** top rail. Then using a straight edge as you did above lay it in line with the intersecting brace to mark the cut. Once the cuts are made in both ends, check to ensure that you are happy with the fit and fasten it to the **middle layer** rail with screws. Be certain to screw from the middle layer out so you can hide these screws later. You should not see any screws on the outside of the finished project.

PRIOR TO STARTING YOUR PROJECT

1. Carefully read to better understand your gate build package which includes these sets the two-page gate layout and component sheets as well as the required materials list dimensions.

2. Ensure all purchased lumber is a maximum of 3" thick when all 3 bays are stacked top materials measure more than 3" thick, pass all boards from the middle layer through to achieve your desired 3" thickness. This is the ideal thickness to fit the recommended fit.

3. If an excellent, clean finished product is part of your plans, take the time now to remove corners from the lumber you have purchased. By removing the rounded edges, it will clean fit later during assembly. We accomplished this by running all boards through again through the planer.

Step-by-Step Gate Plans and Instructions

Visit our website at...
www.snugcottagehardware.com

MagnaLatch safety gate latches are the original and still the best-selling magnetic latches on the market!

KEY FEATURES

- Sold individually or in cases of 15 units.
- Highly child-resistant.
- Adapts to all gates.
- Magnetically triggered (no jamming of sticking).
- Key lockable.
- Quick and easy to install.
- Top Pull MagnaLatch is 20-1/2" tall.
- Vertical Pull MagnaLatch is 12-1/2" tall.
- Limited lifetime warranty.

ORDERING INFORMATION

Description	Product Code	
	Black	White
Top Pull (Tall)	ML3TPKA	ML3TPKAWT
Vertical Pull (Short)	ML3VPKA	N/A

The **LokkLatch Deluxe** is a high-quality security and privacy gate latch for general-purpose gates.

KEY FEATURES

- Sold individually or in cases of 6 units.
- Reliable locking action.
- Operates and locks from both sides of a gate.
- Re-keyable, 6-pin security locks.
- Strong and 100% rust-proof.
- Fully adjustable.
- Quick and easy to install.
- One model fits all square posts and gate frames.
- 316-grade stainless steel components.
- Limited lifetime warranty.

ORDERING INFORMATION

Description	Product Code	
	Black	White
LokkLatch Deluxe	LLD3KA	LLD3KAW

LokkLatch Magnetic is engineered with the most durable materials and finishes that withstand both time and weather.

KEY FEATURES

- Sold individually or in cases of 10 units.
- Fits any metal, wood or vinyl square post gate.
- Operates and locks from both sides of the gate.
- Reliable patented magnetic latching action.
- Unique push/pull action.
- Dual 6-pin re-keyable locks.
- Vertical and horizontal adjustment.
- No visible fasteners.
- Optional decorative trim covers.
- ADA compliant.
- Limited lifetime warranty.

ORDERING INFORMATION

Description	Product Code
LokkLatch Magnetic	LLMKABT

The simple and stylish **Gate Handle** is a general-purpose piece of hardware that allows you to easily grasp virtually any gate.

KEY FEATURES

- Sold individually or in cases of 20 units.
- Convenient gate opening and closing.
- Fits all gates, left and right gate openings.
- Simple and stylish.
- 100% rust-proof.
- Limited lifetime warranty.

ORDERING INFORMATION

Description	Product Code
GateHandle	LL3GH

80

SNUG COTTAGE
Est. 1995
HARDWARE

Phone (800) 637-5427

Fax (519) 474-3337

www.snugcottagehardware.com

DISTRIBUTED
HARDWARE

81

DIGGERS + LOCKS & LATCHES

VERTICAL & HORIZONTAL COMBINATION DEAD BOLT LOCKS

Suitable for both swing gates and out building doors, both the **Vertical Combination Dead Bolt Lock** and **Horizontal Combination Dead Bolt Lock** are push-button mechanically coded and perfect for when both security and access are needed. Coded from the outside with an easy throw lever on the inside, there is no need to carry a key.

The 8000 possible code combinations provide excellent security while the marine grade finish will hold up to harsh marine environments. Both the vertical and horizontal models are easy to install, they are supplied with all the mounting hardware needed to suit gates or doors up to 4" thick. Both also come with a flush mount receiver as well as an escutcheon plate for setback installations.

KEY FEATURES

- Low maintenance.
- Mechanical operation requires no electricity or batteries.
- Recoding is simple for all models.
- Flush or setback mount with one lock.
- 1 year limited warranty.

INSTALLATION SPECS

BL2605/2625 - Vertical Keypad

- Left or right hand installation with one lock.
- On door recoding is simple with supplied tool.
- Requires a 6" high by 3-1/4" wide mounting area.
- BL2605/2625 has a 7/8" bolt action.
- Fits gates or doors up to 4" thick.

BL2615 - Horizontal Keypad

- Left or right hand installation with one lock.
- On door recoding is simple with supplied tool.
- Requires a 3" high by 6" wide mounting area.
- BL2615 has a 1-1/8" bolt action.
- Fits gates or doors up to 4" thick.

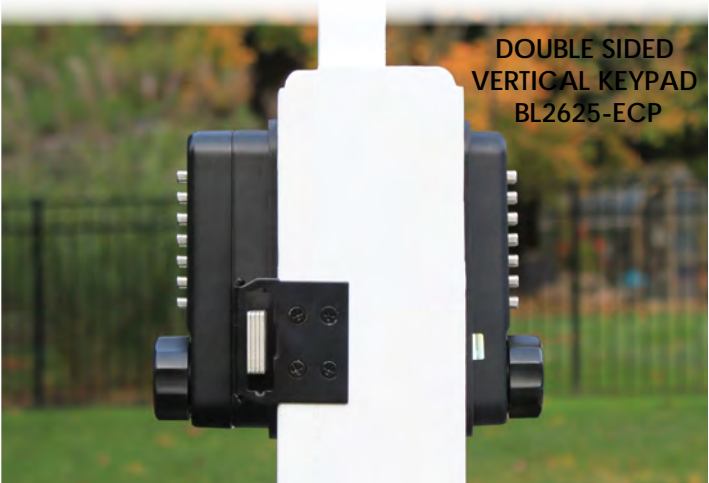
ORDERING INFORMATION

Description	Product Code	
	Black Finish	Stainless Finish
Vertical Keypad		
Vertical Combination Dead Bolt Lock	BL2605 MGPro-ECP	BL2605 SSS-ECP
Double Sided Vertical Combination Dead Bolt Lock	BL2625 MGPro-ECP	N/A
Horizontal Keypad		
Horizontal Combination Dead Bolt Lock	BL2615 MGPro-ECP	BL2615 SSS-ECP

THERE ARE NO RETURNS OR REFUNDS ON BORG LOCKS.



VERTICAL KEYPAD



DOUBLE SIDED
VERTICAL KEYPAD
BL2625-ECP



HORIZONTAL KEYPAD



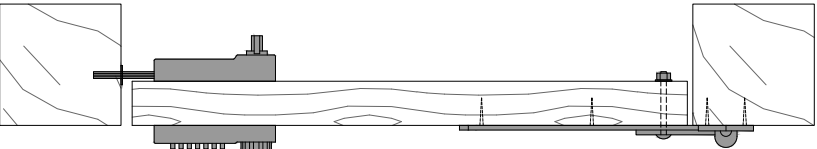
HORIZONTAL KEYPAD - OPEN POSITION



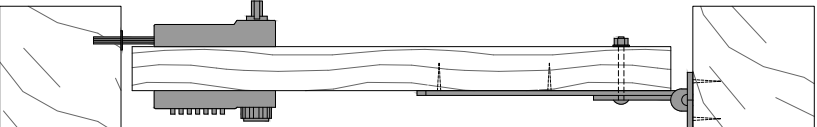
HORIZONTAL KEYPAD - CLOSED POSITION



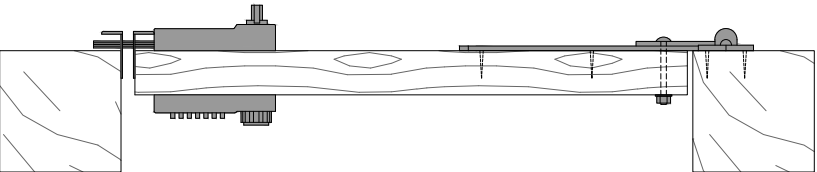
INSTALLATION DETAIL (RIGHT HAND / BL2615-RH)



FLUSH ON THE OUTSIDE



INSTALLED IN CENTER OF OPENING



FLUSH ON THE INSIDE



All locks come equipped with the Easicode Pro code changing system which allows the keypad codes to be changed without the need to uninstall the lock.

SINGLE OR DOUBLE-SIDED KEYPAD FOR METAL GATE LOCK WITH KEY OVERRIDE FUNCTION



Combining a specially designed lock case with a marine grade keypad, the BL3400 and BL3430 gate locks are designed for metal ornamental iron and aluminum gates. They can be planned into a new custom gate build or used as a retrofit lock for readily available stock gates. These models come with a lever handle turn device, a key override lock cylinder and an Easicode Pro code changing mechanism, allowing a quick, on the door code change. They are supplied with an adjustable strike plate for easy installation and adjustment and all the necessary mounting hardware.

The BL3400DKO-ECP is fitted with a lever handle keypad on one side and an un-coded lever handle (free exit) on the other. The BL3430DKO-ECP is fitted with back to back lever handle keypads. The latch projection from both locks is adjustable from 2.375" to 3.125" to accommodate a wide range of gate frame thicknesses and the lock body will fit a gate frame as narrow as 1.375" (1-3/8").

LOCK ACCESSORIES

- Our new BL3400-ORN Ornamental Adapter Kit allows you to cut the first picket in a stock gate to make room for the lock body and easily put the gate back together without the need for any welding or painting.
- Our BL3400-RPA Round Post Adapter Kit makes both the lock body and latch strike adaptable for use on round posts for a wide range of chain link applications.
- Our new BL3400-EUROLOCK-KA Keyed Alike Key Override Cylinders will allow you to use multiple locks on a project that can all be accessed by a common key making it a great choice for condo or multi unit installations as well as single family residential applications.



Locks come equipped with the Easicode Pro code changing system which allows the keypad codes to be changed without the need to uninstall the lock.



ORNAMENTAL ADAPTER KIT
BL3400-ORN

KEY FEATURES

- Low maintenance.
- Sold individually.
- Intended as a retrofit lock for ornamental metal gates.
- Mechanical operation requires no power or batteries.
- Easily adjustable latch projection.
- Key override to pull back the latch.
- Key operated dead bolt function deactivates keypads.
- On door recoding is simple with supplied tool.
- 1 year limited warranty.

INSTALLATION SPECS

- Left or right hand installations with one lock.



ORDERING INFORMATION

Description	Product Code
Single-Sided Keypad for Metal Gate Lock with Key Override Function (Free Exit)	BL3400DKO-ECP
Double-Sided Keypad for Metal Gate Lock with Key Override Function	BL3430DKO-ECP
Ornamental Adapter Kit for Aluminum Gates	BL3400-ORN
Round Post Adapter Kit	BL3400-RPA
Keyed Alike Key Override Cylinders	BL3400-EUROLOCK-KA

THERE ARE NO RETURNS OR REFUNDS ON BORG LOCKS.



SINGLE-SIDED MORTISE GATE LOCK

Our newly designed **Mortise Gate Lock** is exclusive to Snug Cottage Hardware and is an exciting addition to our line-up of Borg Locks. Engineered with wooden gates in mind, the latch projection allows for 1" of adjustment in and out, which makes it perfect for use on gate applications where a little movement can be expected over time. The mortise latch fits into a 1" x 3" by 3.5" deep mortise making it easy to fit to most gates. It is paired with a 5000 series, flat handled keypad which is user friendly and very heavy duty having been tested to 250,000 cycles. Like the other locks we offer from Borg Locks, this lock comes standard with the EasiCode Pro on the door easy code change function making it a great, user-friendly option.

LOCK ACCESSORIES

- Our new **BLS06CaseMGPro – Mortise Gate Lock Flush Mount Adaptor – Yard Swing** allows you take the Mortise Lock and install it without mortising into the gate. It converts the mortise lock into a high functioning, flush mount lock making the installation even easier.
- Great for residential applications.

NEW PRODUCT



KEY FEATURES

- Low maintenance.
- Sold individually.
- Intended for use on wood gate applications.
- Mechanical operation requires no power or batteries.
- EasiCode Pro – on the door code changing standard.
- On door recoding is simple with supplied tool.
- Easily adjustable latch projection.
- Lock has a free passage mode standard.
- 1 year limited warranty.

INSTALLATION SPECS

- Left or right hand installations with one lock. Re-handing is simple.
- Fits on gate stiles as narrow as 3-1/2", but ideal for 5-1/2" wide stiles.
- Fits gates up to 4" thick standard.

ORDERING INFORMATION

Description	Product Code
Single-Sided Mortise Gate Lock	BL5406MGPro-ECP
Mortise Gate Lock Flush Mount Adaptor - Yard Swing	BLS06CaseMGPro

THERE ARE NO RETURNS OR REFUNDS ON BORG LOCKS.

FRONT



SIDE PROFILE



Locks come equipped with the EasiCode Pro code changing system which allows the keypad codes to be changed without the need to uninstall the lock.

GATE TERMINOLOGY

Anatomy Terminology

Gate Frame Components:

Rail a horizontal member of the gate framework to which fence boards or pickets can be attached.

Stile a vertical member of the gate framework.

Diagonal Brace a diagonal member of the gate framework.

Picket / Fence Board a vertical gate element that attaches to the rails (decorative not structural).

Hinge Post the post to which a gate is mounted using hinges.

Latch Post the post on which a latch is mounted.

Gate Opening the overall distance between the hinge post and latch post.

Latch Space the required spacing between the gate and the latch post to allow for proper latch operation.

Hinge Space the required spacing between the gate and the hinge post to allow for proper hinge operation.

Hardware Terminology

Hinge a movable joint on which a gate opens or closes.

Latch a fitting that holds a gate in place when closed.

Gate Stop a device to stop a gate from closing past a specific point in it's swing path.

Cane Bolt also known as a drop rod. A cane bolt is a typical catching component of a double gate.

Gate Holdback a fitting used to anchor a gate in the open position.

Gate Closer a device used to automatically close a gate.

Gate Lock used to secure a gate in the closed position and restrict access.

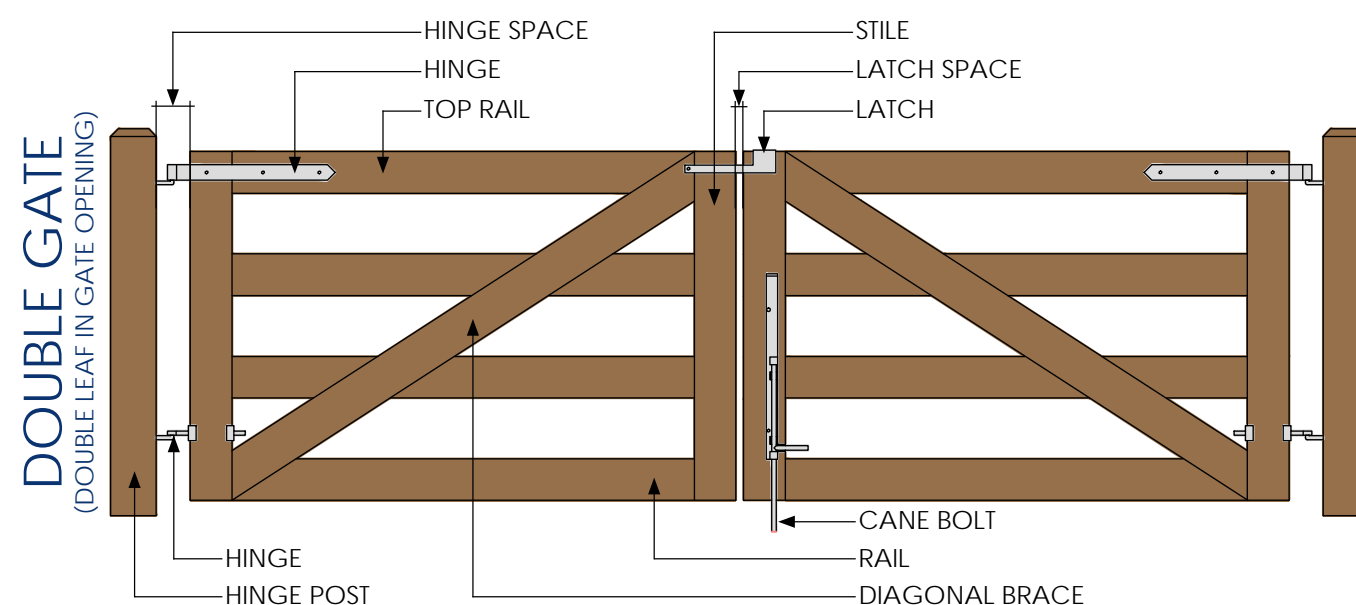
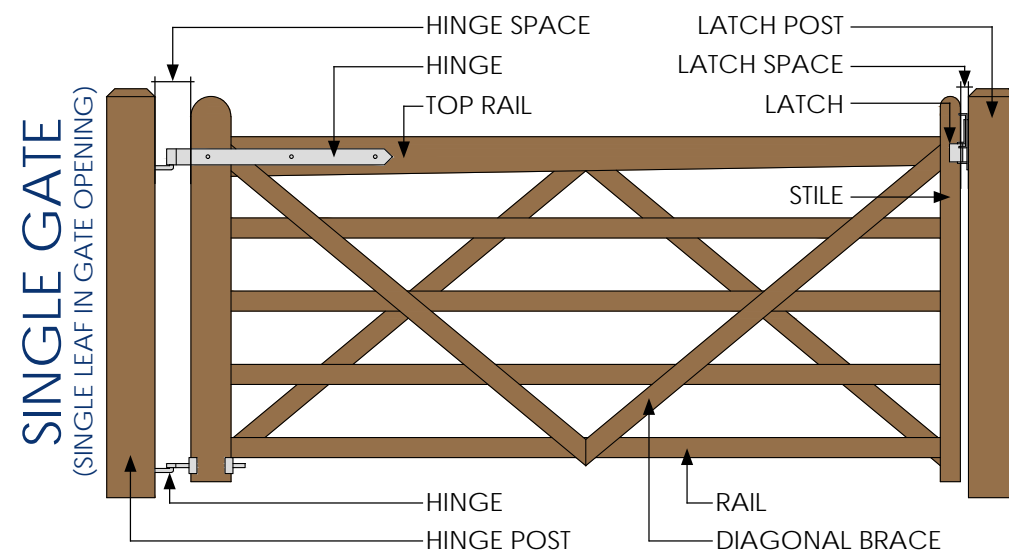
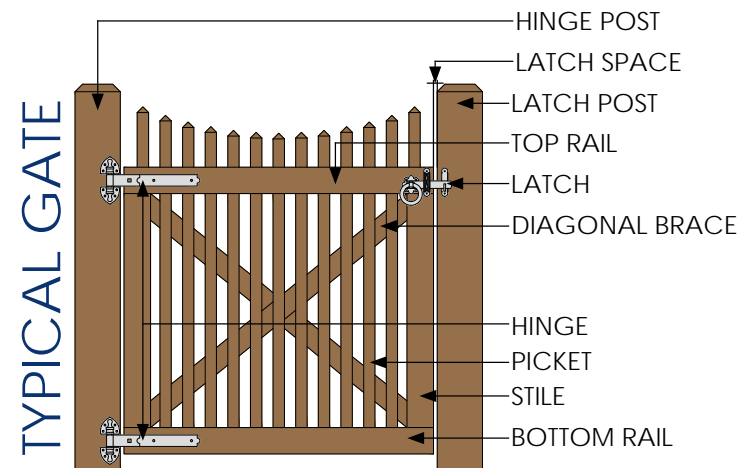
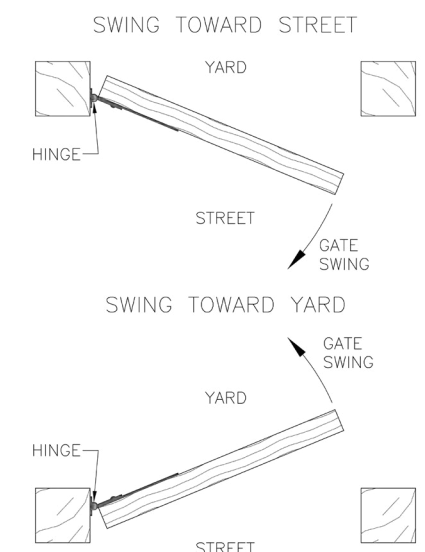
Function Terminology

Street-Swing Gate when you walk up to a gate from the street, you are approaching the attractive, handle portion of the latch, engage the latch and then pull to gate towards you. The actual latching components are located on the back of the gate but the hinges (pivot point) are located on the front or street side of the gate.

Yard-Swing Gate when you walk up to a gate from the street, you are approaching the attractive, handle portion of the latch, engage the latch and push the gate into the yard. The actual latching components of the latch and the hinges (pivot point) are located on the back of the gate and cannot be seen from the street.

Single Gate one gate leaf mounted between 2 posts (typically for gate opening 8' and smaller).

Double Gate 2 gate leaves mounted between 2 posts (typically used for gate opening larger than 8').



SUPERIOR METALS AND FINISHING

Through our many years of experience and commitment to both quality and value, we have refined our selection of base metals and developed a superior finishing process to ensure our products endure the outdoor environment. Fence Professionals continue to rely on our quality hardware to help them produce and install better gate and door systems that both look great and function properly for years, helping them to satisfy the most discerning customers.

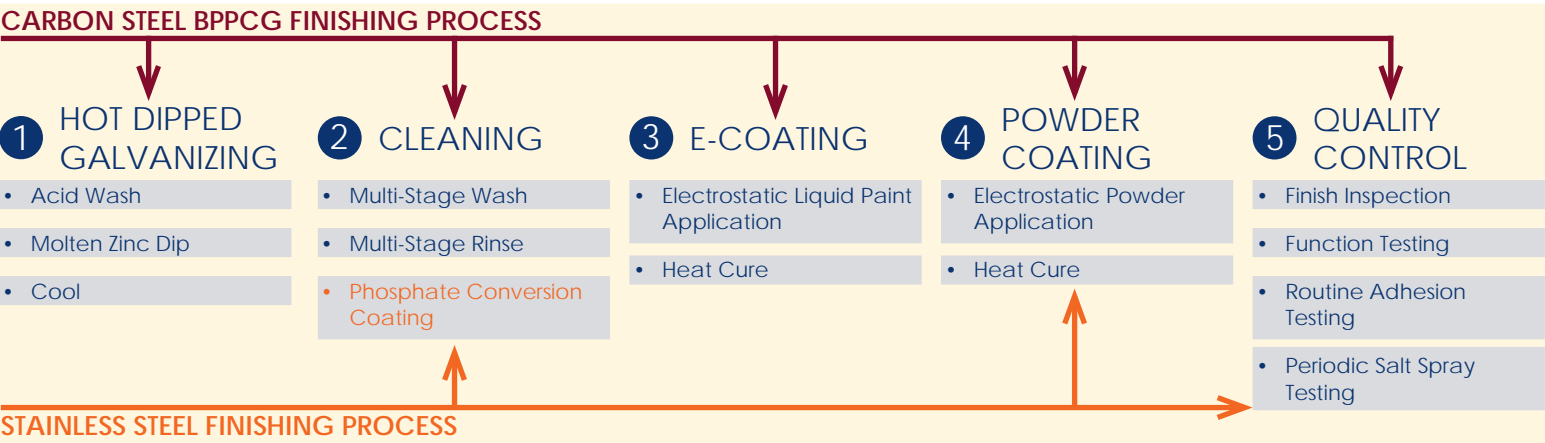
Superior Metals

Carbon Steel we use high-quality carbon steel for all of our steel based-products. The key advantages of carbon steel are its significant strength and that its economical to manufacture. The disadvantage is that when left in an untreated state, carbon steel rusts quickly. For this reason, we hot dip galvanize all of our carbon steel parts to prevent corrosion.

304 Stainless Steel we use grade 304 stainless steel (or 18/8 – contains 18% chromium and 8% nickel) for the majority of our stainless steel products. This is the most commonly used grade of stainless steel; it has excellent forming and welding characteristics and its rust resistant in most interior and exterior applications. It is less costly to manufacture parts from 304 stainless steel as opposed to 316 stainless steel but it's not as corrosion resistant. Therefore, we primarily use 304 stainless steel in combination with the extra protection of our superior Powder Coat Finish.

316 Stainless Steel commonly referred to as "marine grade" stainless steel, 316 stainless steel (contains 16% chromium, 10% nickel and 2-3% molybdenum) is similar to 304 stainless steel but with the added benefit of molybdenum (a highly corrosion resistant metal). We also 'passivate' these parts, a process that dissolves any iron on the surface and produces a protective chromium oxide layer to further deter corrosion. The main advantage to using passivated 316 stainless steel is its unrelenting resistance to corrosion in extreme conditions.

Superior Finishing



Salt Spray Testing Quality Control Images



SCH's Metal Finishing



Competitor's Metal Finishing

Hot Dipped Galvanizing the hot dip galvanizing process provides primary corrosion prevention for our steel hardware. During this process, the hardware is washed in acid and then dipped into a vat of molten, corrosion-resistant zinc. This process is not exact, and while all parts of our hardware are coated, the coating thickness may vary resulting in slight esthetic imperfections to the finish. That being said, hot dip galvanizing is an integral step in our superior metal finishing process as it creates a metallurgical bond between the steel and the zinc coating. Therefore, in the event of damage, rust is unable to migrate to other parts of the product.

E-Coating the multi-stage electro-coat (e-coating) process provides secondary corrosion prevention for our steel hardware and assists with adhesion of powder coating. Developed originally for the automotive industry, the e-coating process immerses the hardware in a bath of electrophoretic paint emulsion in which an electric charge is applied. The electric current attracts the paint particles to all surfaces and joints of the hardware, creating a consistent and uniform layer. The hardware is then heat-cured to finalize the e-coating process. E-coating is not UV stable and therefore requires powder coating to maximize product performance for outdoor use.

Powder Coating during the powder coating process, our hardware is hung on racks along a moving line to which an electrical charge is applied. The hardware is then sprayed with a mist of fine powder with an opposing electrical charge. This process allows for a high degree of control, therefore ensuring the powder coat is applied at an optimal, even thickness with no runs or sags. The hardware is then heat-cured to complete the process. SCH uses high-quality polyester powder coating that is designed specifically for outdoor use with high UV resistance.

BPPCG is an acronym for Black Polyester Powder Coat over Galvanize. In addition to our Hot Dipped Galvanize Finish and Black / White Powder Coat Finishes, we also offer a wide range of our hardware with a BPPCG Finish. Our carbon steel products are hot dip galvanized, cleaned, e-coated and then powder coated as part of the BPPCG process. In the event of surface damage, this multi-layered protective coating minimizes the potential spread of corrosion. The Snug Cottage Hardware BPPCG finishing process is far superior to products coated over raw carbon steel and allows us to offer a wide range of larger hardware options, which are rust free, without the extra cost of producing them from stainless steel.

Quality Control salt spray testing is the Industry Standard typically utilized to determine surface coating stability. SCH routinely tests hardware samples to ensure the finishes applied adhere to our high-standard requirements. Following salt spray testing, each product is examined to ensure the coating doesn't flake and rust formed within the intentional scratches is confined and does not migrate. We are committed to quality and will accept nothing less.

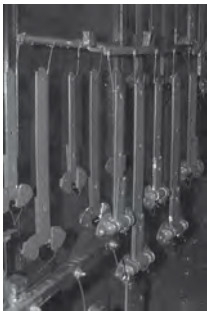
Metal Finishing Process Images



Racked Parts



Cleaning



E-Coating



Powder Coating

FREE GATE PLANS AND INSTRUCTIONS

visit our website at...
www.snugcottagehardware.com

1. Select the plan category you want

2. Select the style of gate you want

3. Review the gate size and configuration

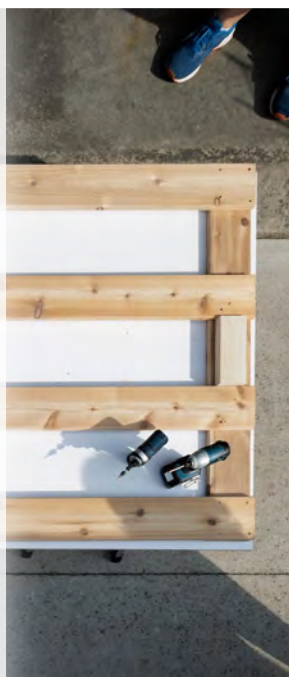
4. Review the recommended hardware

5. Select and download the plans, and materials list

6. Select and download the instructions

7. Purchase your lumber and lay your gate out as shown on the plans and instructions

8. Build yours gate and install



Looking for Inspiration?

We offer an extensive selection of free gate plans and newly updated instructions on our website. We also have plans for small buildings or sheds. And we're continually adding new plans, so remember to check back often for project ideas.