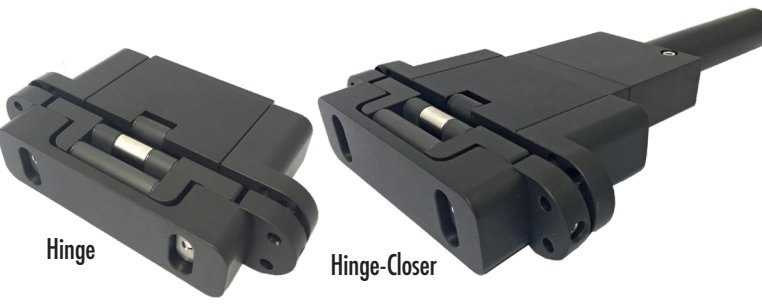


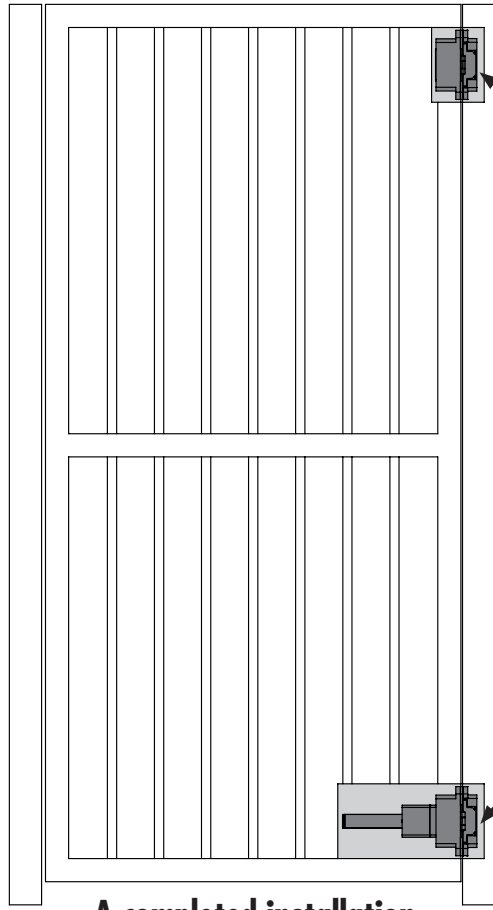
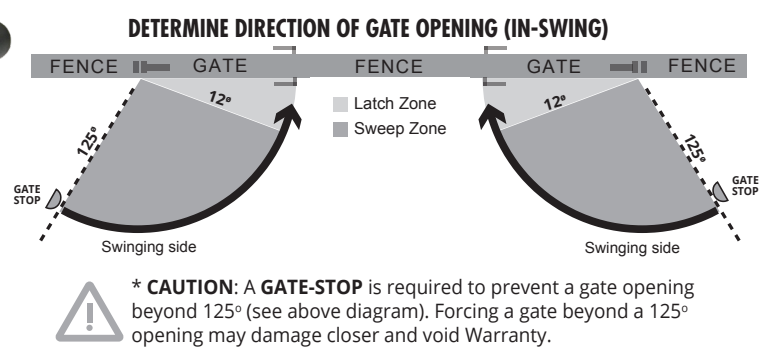
Hinge-Closer Instructions: GATES

Product Code	Models	Contains
77108523	SC CF DOOR CLOSER SET	HINGE & HINGE-CLOSER
78108513	SC CF DOOR PLAIN HINGE	HINGE
77108552	STEEL Weld-Box Kit	4 BOXES
77108551	ALUMINUM Weld-Box Kit	4 BOXES



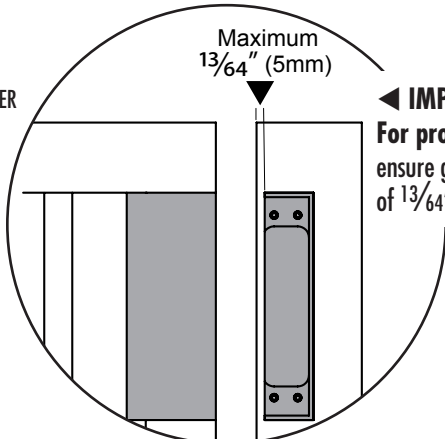
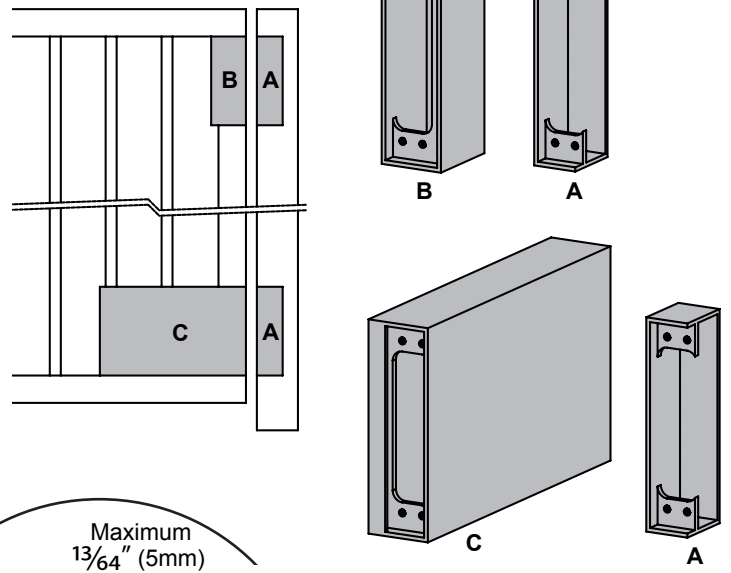
REQUIRED TOOLS:

Pencil, hex keys (2.5, 3 & 8mm), laser level, screwdriver, punch, hammer, clamps, welder, hacksaw.



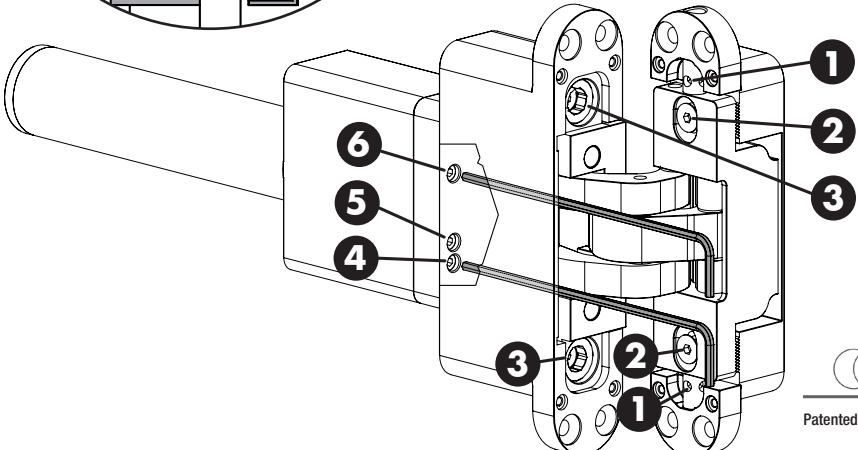
A completed installation

1 WELD WELD-BOXES ONTO GATE AND POST
Weld weld-boxes onto gate and post to suit your profiles/sections.



IMPORTANT:
For proper operation, ensure gap is a maximum of 13/64" (5mm).

FIGURE 1



SUREClose® CONCEALFit

2 INSERT HINGE & HINGE-CLOSER
With the weld-boxes secured into place, insert both the Hinge and Hinge-Closer into the matching boxes.

3 PRY OPEN THE HINGE-CLOSER
Use an adjustable wrench or similar to carefully pry open hydraulic closer unit. Proceed with care so as not to mark or damage hinge-closer.

4 LOCK OFF CLOSING VALVES ▲
Use the 2.5mm hex key to close off valves '4' and '6' (see Figure 1 at lower left) to keep closer unit open for installing fixing screws. (Note: Open valves again after completing step '6'.)

5 SCREW HINGE-CLOSER TO WELD-BOX
With the closer unit open, insert the four fasteners supplied to secure the hinge-closer to weld-box (gate). Secure the upper hinge in the same way.

6 INSERT HINGE UNITS INTO FENCE POST
Loosen fasteners '1' and '2' (Figure 1) on the top hinge to provide vertical slack (refer to Step 7). With the hinge units fully mounted to the gate, insert the entire apparatus into the fence post side and secure with the fasteners supplied. **IMPORTANT:** Now open valves '4' and '6' (see Fig. 1) as damage may occur with valves locked off.

7 TO ADJUST (GATE) HEIGHT
If required, take the 3mm hex key and loosen fixing screws '2' (Figure 1) by 1.5 turns.
Insert same 3mm key into both capstan screws '1' (Figure 1) to adjust gate vertically. Finish by tightening screws '2'.
Adjust top and bottom hinges in small increments.

8 ADJUST GATE HORIZONTALLY TO ALIGN WITH POST
If required, take the 3mm hex key and loosen top capstan screw '1' by 1.5 turns. Then loosen both screws '2' by 1.5 turns. Push door so as to align post flush with gate frame. Finish by tightening top screw '1' and both screws '2'.

9 ADJUST GATE GAP
Use the 8mm hex key to tighten/loosen the screws '3' (see Figure 1) to adjust the gate gap between gate and post, or to adjust the gate inclination. Adjust top and bottom hinges in small increments.

10 ADJUST FOR CLOSING AND LATCHING SPEED
Using the 2.5mm hex key, adjust valve '4' (see Figure 1) for final snap-close speed. Adjust valve '6' for gate closing speed. To reduce speed, turn clockwise. To increase speed, turn counterclockwise.

11 ADJUST FOR BACK-CHECK
To reduce opening angle use 2.5mm hex key to turn valve '5' clockwise (Figure 1). To increase opening angle turn this valve counterclockwise.

12 INSTALL DRESS COVERS
With the hinges and gate functioning as required, secure all dress covers to hinges using the covers and fasteners supplied.

Adjustment Instructions

REF.	ADJUSTMENT	UNIT	RANGE
1	Vertical gate height	Both	+/- 5/64" (2mm) with 3/64" (1.25mm) steps
2	Horizontal gate movement	Both	+/- 3/64" (1.25mm)
3	Depth and Inclination	Both	Gap between post and gate is adjustable from 5/64" (2mm) - 1/4" (6mm)
4	Final snap-close speed	Closer	Between 12°-0°
5	Gate back-check	Closer	Steps at 60°, 80°, 100° & 125°
6	Gate closing speed	Closer	125° to 0°