

NEW



STAINLESSSteel

Series 2 Self-Closing Hinges

Horizontal Adjustability Up To 2½"

Self-Closing Force Increased by 40%

Rigid, UV-coated, fiber-reinforced adjustment cap and tension adjustment
Minimizes opening/closing friction.

Robust tension adjustment hex wrench
Adjust tension with a turn easily from top



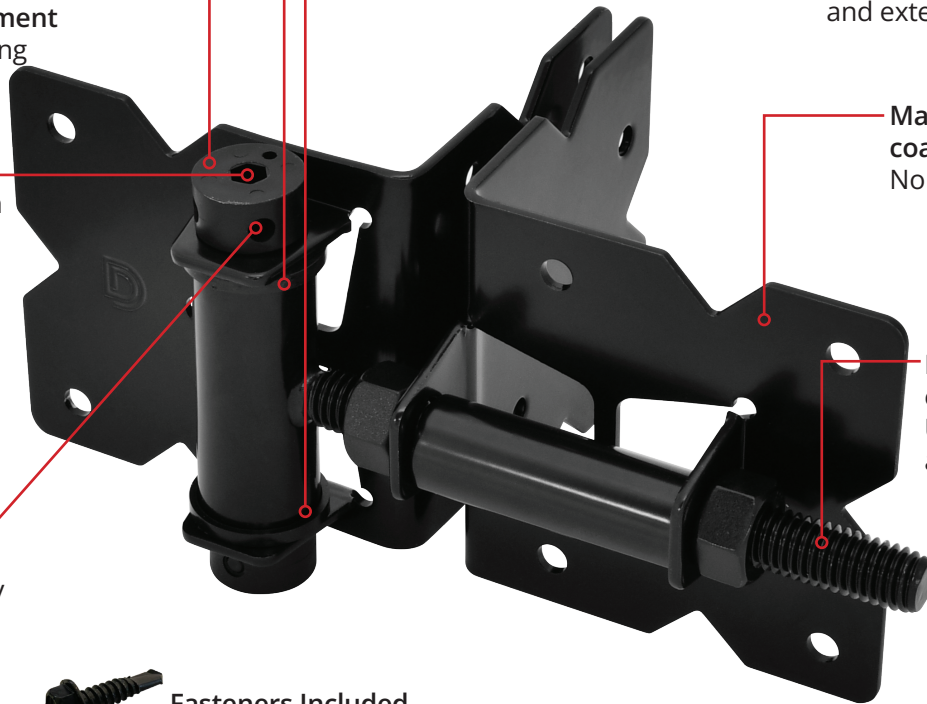
Larger tension stop
Simpler to use, fits easily for quick adjustments



Self-lubricating bushings
Reduce self-closing friction and extends hinge life

Marine-grade powder coat finish
No unfinished surfaces

Longer bolt – standard on all models
Up to 50% more adjustability



Fasteners Included

Self-drilling, 410 stainless steel plus Ruspert finish for corrosion protection

New packaging takes less space
Reducing storage space and shipping costs



Stainless Steel Series 2 Improvements

3 times increase in open / close cycles

Industry leading horizontal adjustment from 5/8" to 1 9/16" or 5/8" to 2 1/2" (depending on model)

40% greater closing force

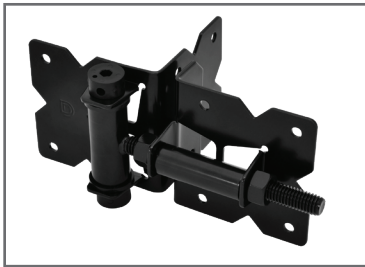
Why D&D Stainless Steel Hinges Are Better

- Unmatched range of horizontal adjustability up to 2½"
- Marine-grade powder coat finish - no unfinished surfaces
- Stainless steel construction with V-notch styling
- Standard and narrow side legs available
- Models available for a wide range of post and gate frame sizes
- Non-spring versions available in regular and heavy-duty
- Stainless steel fasteners included - 410 stainless steel 14g x 1" self-drilling head
- For vinyl and wood gates

D&D Technologies®
World's most trusted gate hardware

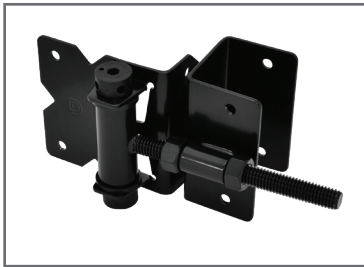


STAINLESSSteel



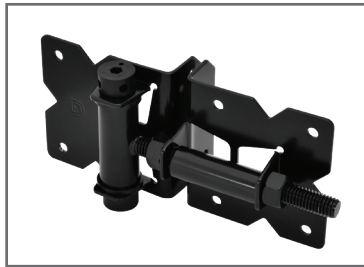
DDS2HSNA

Regular Hinge – Self-closing,
tension adjustable
Standard to Narrow



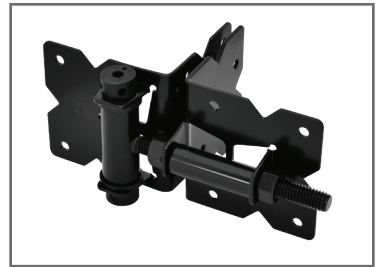
DDS2HNW3A

Regular Hinge – Self-closing,
tension adjustable
Narrow to Wrap 2"



DDS2HNNA

Regular Hinge – Self-closing,
tension adjustable
Narrow to Narrow



DDS2HSSA

Regular Hinge – Self-closing,
tension adjustable
Standard to Standard

CODE	MODEL / FEATURE	SIDE FIXING LEGS	GAP VARIANCE	COLOR	FASTENERS INCLUDED	SOLD AS
DDS2HSNA	Regular Hinge - Self-closing, tension adjustable	Standard to Narrow	$\frac{5}{8}" - 1 \frac{9}{16}"$ (16 - 38mm)	Black	Self-drilling 410 Stainless Steel	Pair
DDS2HNW3A	Regular Hinge - Self-closing, tension adjustable	Narrow to Wrap 2" Gate Frame	$\frac{5}{8}" - 2 \frac{1}{2}"$ (16 - 64mm)	Black	Self-drilling 410 Stainless Steel	Pair
DDS2HNNA	Regular Hinge - Self-closing, tension adjustable	Narrow to Narrow	$\frac{5}{8}" - 1 \frac{9}{16}"$ (16 - 38mm)	Black	Self-drilling 410 Stainless Steel	Pair
DDS2HSSA	Regular Hinge - Self-closing, tension adjustable	Standard to Standard	$\frac{5}{8}" - 1 \frac{9}{16}"$ (16 - 38mm)	Black	Self-drilling 410 Stainless Steel	Pair

☎: (800) 716-0888

🌐: ddtech.com

✉: info@ddtechusa.com



Warranty conditions vary according to gate or door application and usage. See full Warranty details and limitations on D&D Technologies' website.



D&D Technologies®

World's most trusted gate hardware

MKT-203-1022