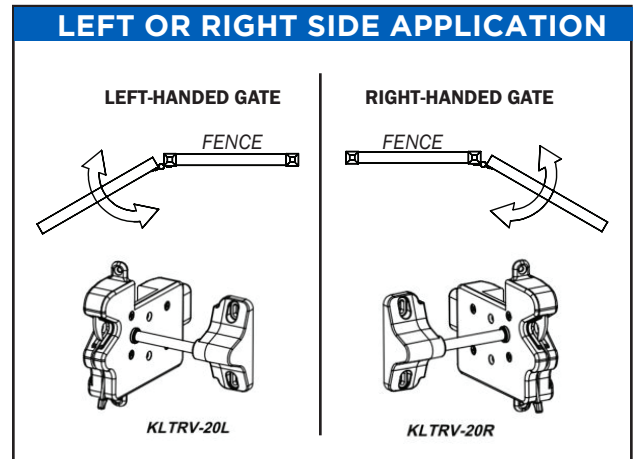
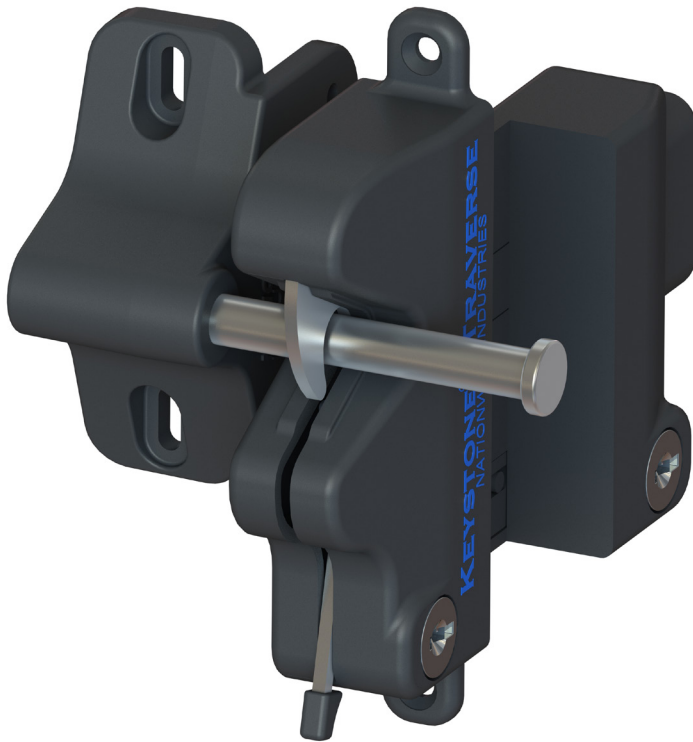


# Keystone® Traverse

EASIEST LATCH YOU WILL EVER INSTALL



- Easy to install
- For 2" fence posts
- No drilling holes through your posts
- Locks and unlocks from both sides
- Time saver for your installers

## INSTALL IN 5 EASY STEPS

**1**

Determine left or right application

**2**

Determine latch height

**3**

Attach the latch to the post using (4) flat head screws

**4**

Attach keeper

**5**

Done & installed!!!

### KEYSTONE® TRAVERSE

Part Number	Description	Quantity/Weight
KLTRV-20L-SD-BK	Traverse Latch, Left handed with Self Drilling Screws, for 2" fence posts, Black	20/Box @ 35lbs
KLTRV-20R-SD-BK	Traverse Latch, Right handed with Self Drilling Screws, for 2" fence posts, Black	20/Box @ 35lbs