

Ornamental Fence Hardware and Components

Hinges
Latches
Caps
Finials
Brackets
Accessories



**NATIONWIDE
INDUSTRIES**

Phone: (813) 988-2628 • Fax: (866) 988-3465 • Email: info@nationwideindustries.com



NATIONWIDE INDUSTRIES

WE EXPANDED
COMBINING TWO GREAT COMPANIES
TO BETTER SERVE YOUR
HARDWARE NEEDS!



**NEW
LOCATION!**

INNOVATIVE HARDWARE SOLUTIONS FOR FENCE AND RAILING PROFESSIONALS



**WAREHOUSE IS NOW
120,000 SQ FEET**



**14,000 SQ FEET
OF OFFICE SPACE**



EXPANDED SPACE IN TAMPA AS WELL AS OUR WAREHOUSE IN UTAH!

About Nationwide Industries

We design and manufacture quality hardware and components for the building materials industry. We are the leading industry resource with over 2,000 SKUs comprised of steel, aluminum, stainless steel, glass-filled nylon, die castings, for simple components or high tech solutions. As an industry leader, we

provide the best possible balance of value, service and innovation. From our Ultra-Tec® cable railing to our unrivaled safety latches we have a solution for you. Please contact our Tampa based customer service department to discover what products you need for your next project.

We are the leading industry resource with over 2,000 SKUs

3505 Cragmont Dr, Tampa, FL 33619
Phone: (813) 988-2628 • Fax (866) 988-3465
www.nationwideindustries.com • info@nationwideindustries.com



ALUMINUM • VINYL • WOOD • STEEL • CHAINLINK • CABLE

CornerStone® 2 the MILLION Cycle Hinge

CornerStone® 2 Non Adjustable Hinge



Patented

- ▶ Post and Gate flanges: 1"(W) x 1"(D)
- ▶ Heavy duty design produced with durable glass-filled nylon
- ▶ 1/4" Allen wrench **included** for easy Turn-N-Go™ tension adjustment
- ▶ 20 pair per case @ 33lbs

NEW!

Point-Load
Tested over
1500 lbs
per pair!

C2H100N-SD-BK Black w/stainless steel self-drilling screws included
C2H100N-SD-WH White w/stainless steel self-drilling screws included
C2H100N-ZD-BK Black w/zinc plated steel self-drilling screws included
C2H100N-ZD-WH White w/zinc plated steel self-drilling screws included

CornerStone® 2 Square Post Fully Adjustable Hinge



Patented

- ▶ Fits both right and left-hand applications
- ▶ 1/4" Allen wrench included for easy Turn-N-Go™ tension adjustment
- ▶ 20 pair per case @ 46lbs

NEW!

Point-Load
Tested to
1500 lbs
per pair!

- ▶ Horizontally adjustable to 0.98"
- ▶ Vertically adjustable to 0.875"

C2H200F-SD-BK Black w/stainless steel self-drilling screws included
C2H200F-SD-WH White* w/stainless steel self-drilling screws included
C2H200F-ZD-BK Black w/zinc plated steel self-drilling screws included
C2H200F-ZD-WH White* w/zinc plated steel self-drilling screws included

**Special Order*

CornerStone® 2 Heavy Duty

Patented

NEW!



SELF-CLOSING ON GATES UP TO 135 LB!



C2H120NB-SD-BK Black w/stainless steel screws
C2H121NB-SD-BK Black w/stainless steel screws

- ▶ Fits both right and left-hand applications
- ▶ C2H121 Includes Alignment tab on Gate Post side
- ▶ 1/4" Allen wrench included for easy Turn-N-Go™ tension adjustment
- ▶ 20 pair per case @ 29lbs

White available through special order.

Point-Load
Tested over
1700 lbs
per pair!

CornerStone® 2 Series Technology Self-Closing Nylon Hinges



ALL CornerStone® 2 hinge styles have been tested to 1 MILLION Cycles



Pictured Above:
CornerStone® 2
Self-Closing Adjustable Hinge
C2H100N-SD-BK
Fits Square Profiles

Patented

Cornerstone® 2 hinges tested to 1 million weighted cycles on a 6' x 4' 75 lbs privacy gate.



Safe anti-climb design



Turn-N-Go™ tensioning



Easy tension release with most screwdrivers



Heavy duty design



Allen wrench included

CornerStone® the MILLION Cycle Hinge

CornerStone® Series Self-Closing Nylon Hinges



For Aluminum and Steel Gates

The durability of glass-filled nylon along with high quality manufacturing and design, make the Cornerstone® an ideal choice when you are searching for a very strong, easy-to-install and cost-effective self-closing hinge. With a variety of options available, you will be assured that you have the right hardware for the right application.

- ▶ **Heavy Duty** Commercial Grade Design
- ▶ Glass-filled nylon construction for superior **strength, durability** and **low maintenance**
- ▶ No rusting or staining
- ▶ Available in Black or White

You Choose the Screws

- ▶ Self-drilling stainless screws for applications in aluminium **or**
- ▶ Self-drilling zinc plated steel screws for applications in steel

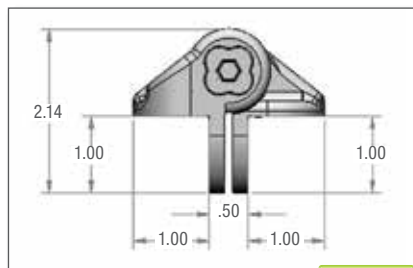


Easy Tension Adjustment

- ▶ Just push down and turn.
- A one-step process that is quick and avoids stripping.
Allen wrench included.

Easy and Convenient!

CornerStone® Non Adjustable Hinge



Patented



CH100N-SD-BK Black w/stainless steel self-drilling screws included
CH100N-SD-WH White w/stainless steel self-drilling screws included
CH100N-ZD-BK Black w/zinc plated steel self-drilling screws included
CH100N-ZD-WH White w/zinc plated steel self-drilling screws included

- ▶ Post and Gate flanges: 1"(W) x 1"(D)
- ▶ Produced with durable glass-filled nylon
- ▶ 1/4" Allen wrench **included** for tension adjustment
- ▶ 20 pair per case @ 19lbs

Point-Load
Tested to
1000 lbs
per pair!

Products displaying this icon:

- ▶ Are warranted to work for 1 MILLION Cycles*
- ▶ Full replacement of product for any loss of functionality*

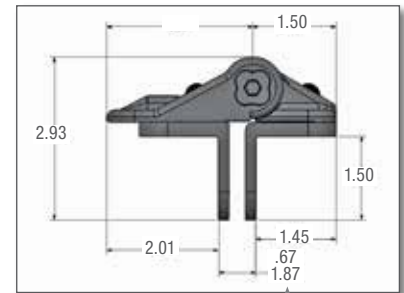
* See warranty sheet for details at nationwideindustries.com

* CornerStone® hinges tested to 1 million cycles on a 6'x4' 75lb privacy gate.

CornerStone® Square Post Fully Adjustable Hinge



Patented



Double dimensions indicate range of adjustability

CH200F-SD-BK Black w/stainless steel self-drilling screws included
CH200F-SD-WH White w/stainless steel self-drilling screws included
CH200F-ZD-BK Black w/zinc plated steel self-drilling screws included
CH200F-ZD-WH White w/zinc plated steel self-drilling screws included

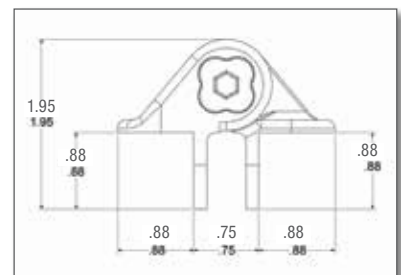
- ▶ Horizontally adjustable up to 1 1/4"
- ▶ Vertically adjustable up to 1/2"
- ▶ Fits both right and left hand applications
- ▶ 1/4" Allen wrench **included** for tension adjustment
- ▶ 20 pair per case @ 40lbs

Point-Load
Tested to
1000 lbs
per pair!

CornerStone® MINI Vertically Adjustable Hinge



Patented



Designed with smaller look for slightly lighter gates
Tested to 1 million cycles on a 60lb gate

CH090-SD-BK Black w/stainless steel self-drilling screws included
CH090-SD-WH White w/stainless steel self-drilling screws included
CH090-ZD-BK Black w/zinc plated steel self-drilling screws included
CH090-ZD-WH White w/zinc plated steel self-drilling screws included
CH090-NS-BK Black no screws included
CH090-NS-WH White no screws included

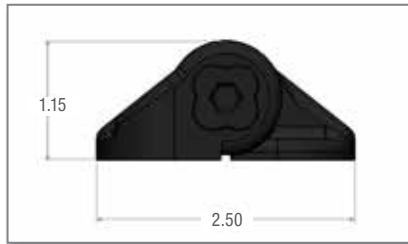
- ▶ Slotted for vertical adjustability
- ▶ 1/4" Allen wrench **included** for tension adjustment
- ▶ 20 pair per case @ 18lbs

Point-Load
Tested to
900 lbs
per pair!

CornerStone® Vertically Adjustable Hinge



Patented

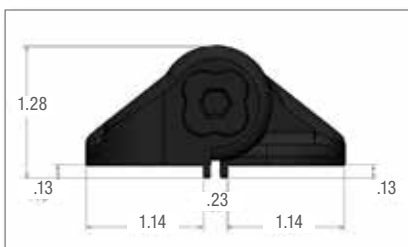


CH101V-SD-BK Black w/stainless steel self-drilling screws included
CH101V-SD-WH White w/stainless steel self-drilling screws included

- ▶ Slotted for vertical adjustability (White is Special Order)
- ▶ 1/4" Allen wrench **included** for tension adjustment
- ▶ 20 pair per case @ 19lbs



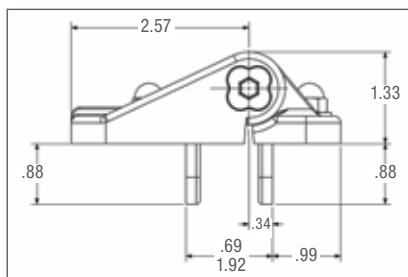
Patented



CH102V-SD-BK Black w/stainless steel self-drilling screws included
CH102V-SD-WH White w/stainless steel self-drilling screws included

- ▶ Slotted for vertical adjustability
- ▶ **Includes tabs for alignment**
- ▶ 1/4" Allen wrench **included** for tension adjustment
- ▶ 20 pair per case @ 19lbs

CornerStone® Fully Adjustable Hinge



Tested to 1 million cycles on a 60lb gate

CH095F-SD-BK Black w/stainless steel self-drilling screws included
CH095F-SD-WH White w/stainless steel self-drilling screws included
CH095F-ZD-BK Black w/zinc plated steel self-drilling screws included
CH095F-ZD-WH White w/zinc plated steel self-drilling screws included

- ▶ Fully adjustable horizontally and vertically
- ▶ Same spring and barrel as the CH090
- ▶ 1/4" Allen wrench **included** for tension adjustment
- ▶ 20 pair per case @ 26lbs



Square Gate Hinges - Female

- ▶ Pressed Steel w/fasteners
- ▶ HDG
- ▶ 4mm

CL-5501-BK Black

- ▶ 1-1/4" x 1" 50(EA)/Case

CL-5502-BK Black

- ▶ 1-1/2" x 1" 50(EA)/Case

CL-5503-BK (WI-OFH-2B) Black

- ▶ 2" x 1" 50(EA)/Case



Square Post Hinges - Male

- ▶ Pressed Steel w/fasteners
- ▶ HDG
- ▶ 4mm

CL-5506-BK Black

- ▶ 2" x 1" 50(EA)/Case

CL-5507-BK Black

- ▶ 2-1/2" x 1" 50(EA)/Case

CL-5508-BK (WI-OMH-3B) Black

- ▶ 3" x 1" 50(EA)/Case



Square Collars

- ▶ Pressed Steel w/fasteners
- ▶ HDG
- ▶ 4mm

CL-7379-BK Black

- ▶ 1-1/4" x 1" 50(Sets)/Case

CL-7382-BK Black

- ▶ 2" x 1" 50(Sets)/Case



Square Forks

- ▶ Pressed Steel w/fasteners
- ▶ HDG
- ▶ 4mm

CL-7389-BK Black

- ▶ 1-1/4" x 1" 50(EA)/Case

CL-7391-BK Black

- ▶ 2" x 1" 50(EA)/Case

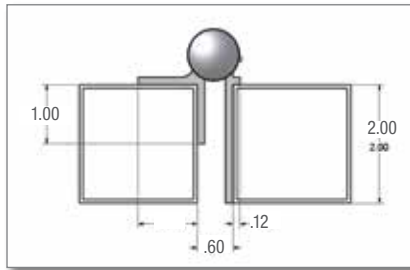
CL-7392-BK Black

- ▶ 2-1/2" x 1" 50(EA)/Case



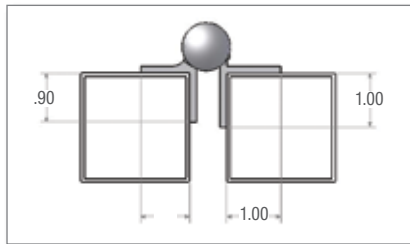
Ornamental Fence Hinges

4" Self-Closing Aluminum Hinge



NW093-26 Black
NW093-36 Bronze
NW093-56 White

- ▶ Post flange: 1/8"(W) x 2"(D)
- ▶ Gate flange: 1"(W) x 1"(D)
- ▶ Tension adjustment wrench and barrel caps included
- ▶ 50 each per case @ 25lbs



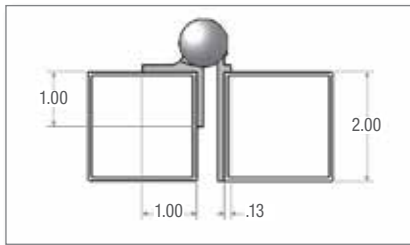
NW093A-26 (WI-JH501-BK) Black
NW093A-36 (WI-JH501-BZ) Bronze
NW093A-56 (WI-JH501-WH) White

- ▶ Both flanges: 1"(W) x 1"(D)
- ▶ Tension adjustment wrench and barrel caps included
- ▶ 50 each per case @ 25lbs

NW093A-2S-26 Black
NW093A-2S-36 Bronze
NW093A-2S-56 White

- ▶ Pairs come with self-drilling stainless steel screws and instructions
- ▶ 25 pairs per case

5" Self-Closing Aluminum Hinge



Also includes shim for wall-mount applications

NW093J-26 (WI-JH500-BK) Black
NW093J-36 (WI-JH500-BZ) Bronze
NW093J-56 (WI-JH500-WH) White

- ▶ Post flange: 1/8"(W) x 2"(D)
- ▶ Gate flange: 1"(W) x 1"(D)
- ▶ Tension adjustment wrench and barrel caps included
- ▶ 50 each per case @ 32lbs

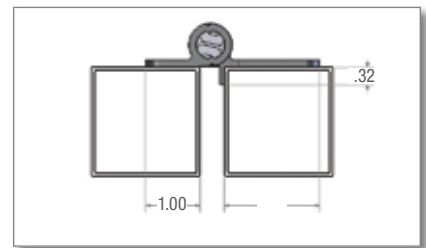
NW093J-2S-26 Black
NW093J-2S-36 Bronze
NW093J-2S-56 White

- ▶ Pairs come with self-drilling stainless steel screws and instructions
- ▶ 25 pairs per case

5 3/4" Self-Closing Aluminum Hinge



Patented



NW094-BK Black
NW094-BZ Bronze
NW094-WH White

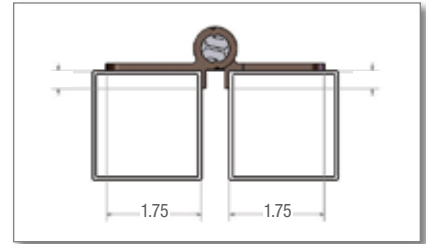
- (White is Special Order)
- ▶ Post flange: 1 3/4"(W) x 5/16"(D)
- ▶ Gate flange: 1"(W)
- ▶ Adjustable spring tension
- ▶ 100 each per case @ 55lbs

NW094-2S-BK Black Pair
NW094-2S-BZ Bronze Pair
NW094-2S-WH White Pair

- (White is Special Order)
- ▶ Pairs come with self-drilling stainless steel screws and instructions
- ▶ 50 pairs per case



Patented



NW094L-BK Black
NW094L-BZ Bronze
NW094L-WH White

- ▶ Both flanges: 1 3/4"(W) x 5/16"(D)
- ▶ Adjustable spring tension
- ▶ 100 each per case @ 61lbs

NW094L-2S-BK Black Pair
NW094L-2S-BZ Bronze Pair
NW094L-2S-WH White Pair

- ▶ Pairs come with self-drilling stainless steel screws and instructions
- ▶ 50 pairs per case

Nautilus® Controlled Closing Gate Hinge

NEW!



NTLS-R-AA-BK Active-Active Hinge, Black, Right Hand
NTLS-R-AD-BK Active-Dummy Hinge, Black, Right Hand
NTLS-L-AA-BK Active-Active Hinge, Black, Left Hand
NTLS-L-AD-BK Active-Dummy Hinge, Black, Left Hand

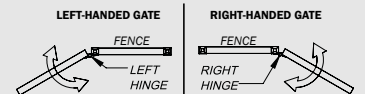
- ▶ Anti-slam technology
- ▶ Vertically and Horizontally adjustability
- ▶ Fits both right and left hand applications
- ▶ Easy to adjust closing speed
- ▶ 12 pair per case @ 27lbs



*Active-Active = closing power of 125 lbs.

*Active-Dummy = closing power of 75 lbs.

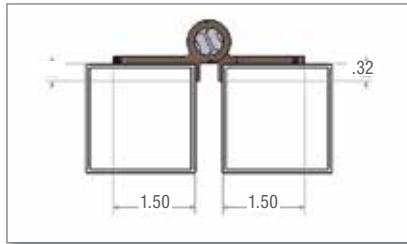
USE OUR GUIDE TO DETERMINE IF YOU NEED A
LEFT OR RIGHT-HANDED HINGE



5 3/4" Self-Closing Aluminum Hinge



Patented



NW096-BK Black
NW096-BZ Bronze
NW096-WH White

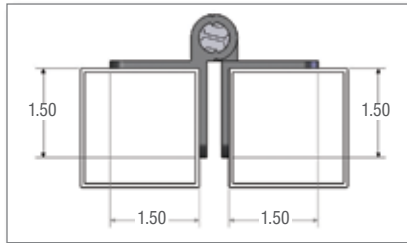
- ▶ Both flanges:
1 1/2"(W) x 5/16"(D)
- ▶ Adjustable spring tension
- ▶ 100 each per case @ 55lbs

NW096-2S-BK Black Pair
NW096-2S-BZ Bronze Pair
NW096-2S-WH White Pair

- ▶ Pairs come with self-drilling stainless steel screws and instructions
- ▶ 50 pairs per case



Patented



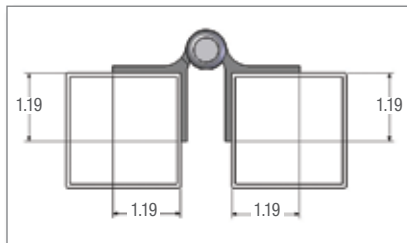
NW095-BK Black
NW095-BZ Bronze
NW095-WH White

- ▶ Both flanges:
1 1/2"(W) x 1 1/2"(D)
- ▶ Adjustable spring tension
- ▶ 50 each per case @ 42lbs

NW095-2S-BK Black Pair
NW095-2S-BZ Bronze Pair
NW095-2S-WH White Pair

- ▶ Pairs come with self-drilling stainless steel screws and instructions
- ▶ 25 pairs per case

4" Non Self-Closing Aluminum Hinge



NW149-26 Black

- ▶ Both flanges:
1 3/16"(W) x 1 3/16"(D)
- ▶ 100 each per case @ 39lbs

NW149-2S-26 Black Pair

- ▶ Pairs come with self-drilling stainless steel screws and instructions
- ▶ 50 pairs per case

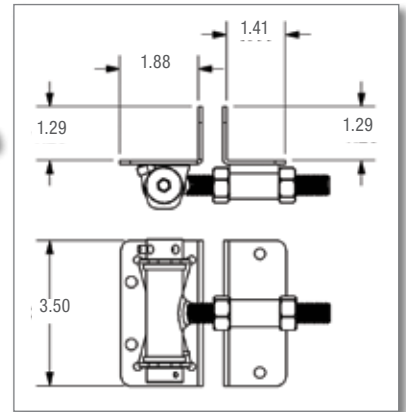
NOTE!

Bronze now comes in 2 shades! BZ or (-36) is our standard dark bronze. BZ2 is a lighter bronze. Check for availability or minimum order quantity

Horizontal Adjustable Self-Closing Stainless Steel Hinge



Strong Closing Power!



NW171SCP5-SSB Black
NW171SCP5-SSBD* Black
NW171SCP5-SSBZD* Bronze
* D=Self-drilling screws

- ▶ Stainless steel, powder coated
- ▶ Easy tension adjustment
- ▶ Larger easy to hold pin
- ▶ Flanges: See above
- ▶ Allen wrench included
- ▶ 12 pairs per case @ 29lbs

Heavy Duty Sealed Bearing Hinges



Great Options for Estate Gates!



Black Aluminum Bolt-on shown above

Mill Steel Weld-on shown above

- ▶ Assembled in the USA
- ▶ Never needs lubrication
- ▶ Horizontal adjustability

28 SKUs Available!

Options Per Each Hinge Side

- ▶ Steel or Aluminum
- ▶ Bolt-on or Weld-on application
- ▶ Black or Mill finish

Heavy Duty Sealed Bearing Hinges

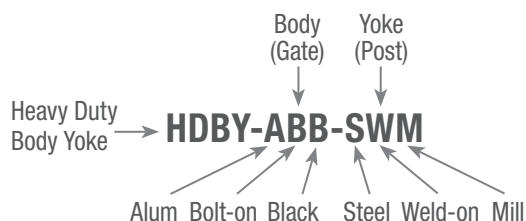
All Hinges have **Horizontal Adjustability** of approximately 1/2"

For each side of the hinge, you choose:

- ▶ Aluminum or Steel material
- ▶ Bolt-on or Weld-on application
- ▶ Black or Mill (unpainted) finish

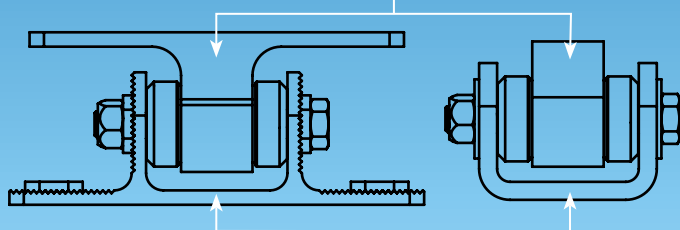
Understanding the Part Number

Material: **A** = Aluminum **S** = Steel
Application: **B** = Bolt-on **W** = Weld-on
Finish: **M** = Mill **B** = Black*



* Black finish on aluminum and steel is e-coated.

Body - the portion of the hinge (with bearings) that rotates

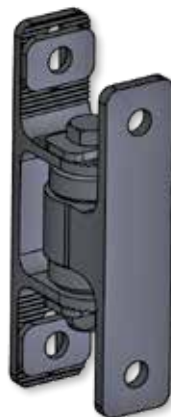


Yoke - the bracket portion which holds the body

Hinge Features:

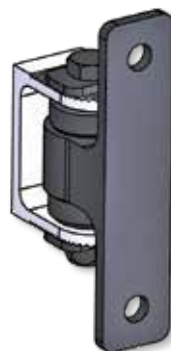
- ▶ Each hinge contains 2 sealed roller bearings (no grease required)
- ▶ **All hinges slotted for horizontal adjustability**
- ▶ Rating: 2,500 lbs. per hinge based on factory dynamic rating of bearings**
- ▶ Assembled in the U.S.
- ▶ Warranty: Lifetime on components and 5 years on bearings
- ▶ Unpainted steel hinges are zinc plated.
- ▶ Steel weld-on body fits round or square profiles
- ▶ All hinges sold individually but packaged 8/case.

** On this type of hinge, the mounting bracket is the weak point (not the bearings). Nationwide Industries steel yoke is 15% thicker than competitive products reviewed.



HDBY-ABB-ABB

- ▶ Body: Alum, Bolt-on, Blk
- ▶ Yoke: Alum, Bolt-on, Blk
- ▶ Gap Min: 2.7"
- ▶ Gap Max: 3.2"
- ▶ Vertical Adjustability: 0.75"
- ▶ Height: 7.2"
- ▶ Weight: 1.5 lbs each



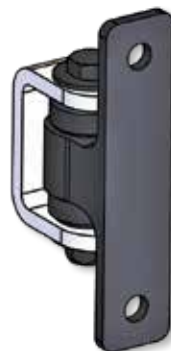
HDBY-ABB-AWM

- ▶ Body: Alum, Bolt-on, Blk
- ▶ Yoke: Alum, Weld-on, Mill
- ▶ Gap Min: 2.7"
- ▶ Gap Max: 3.2"
- ▶ Hinge Height: 6.5"
- ▶ Weight: 1.4 lbs each



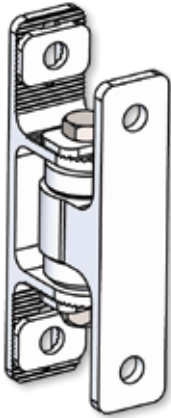
HDBY-ABB-SBB

- ▶ Body: Alum, Bolt-on, Blk
- ▶ Yoke: Steel, Bolt-on, Blk
- ▶ Gap Min: 3.0"
- ▶ Gap Max: 3.5"
- ▶ Hinge Height: 6.5"
- ▶ Weight: 2.5 lbs each



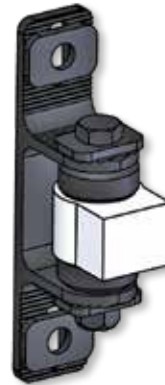
HDBY-ABB-SWM

- ▶ Body: Alum, Bolt-on, Blk
- ▶ Yoke: Steel, Weld-on, Mill
- ▶ Gap Min: 2.8"
- ▶ Gap Max: 3.3"
- ▶ Hinge Height: 6.5"
- ▶ Weight: 1.9 lbs each



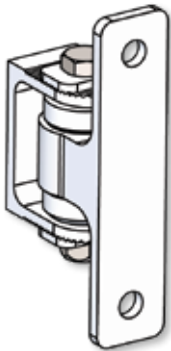
HDBY-ABM-ABM

- Body: Alum, Bolt-on, Mill
- Yoke: Alum, Bolt-on, Mill
- Gap Min: 2.7"
- Gap Max: 3.2"
- Vertical Adjustability: 0.75"
- Height: 7.2"
- Weight: 1.5 lbs each



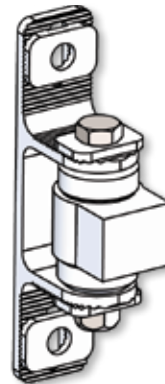
HDBY-AWM-ABB

- Body: Alum, Weld-on, Mill
- Yoke: Alum, Bolt-on, Blk
- Gap Min: 2.4"
- Gap Max: 2.9"
- Vertical Adjustability: 0.75"
- Height: 7.2"
- Weight: 1.3 lbs each



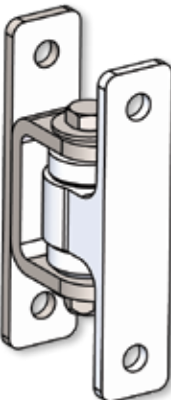
HDBY-ABM-AWM

- Body: Alum, Bolt-on, Mill
- Yoke: Alum, Weld-on, Mill
- Gap Min: 2.7"
- Gap Max: 3.2"
- Hinge Height: 6.5"
- Weight: 1.4 lbs each



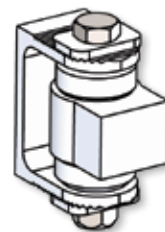
HDBY-AWM-ABM

- Body: Alum, Weld-on, Mill
- Yoke: Alum, Bolt-on, Mill
- Gap Min: 2.4"
- Gap Max: 2.9"
- Vertical Adjustability: 0.75"
- Height: 7.2"
- Weight: 1.2 lbs each



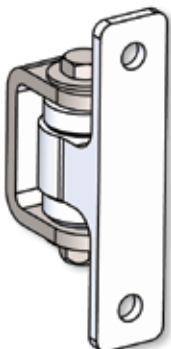
HDBY-ABM-SBM

- Body: Alum, Bolt-on, Mill
- Yoke: Steel, Bolt-on, Mill
- Gap Min: 3.0"
- Gap Max: 3.5"
- Hinge Height: 6.5"
- Weight: 2.5 lbs each



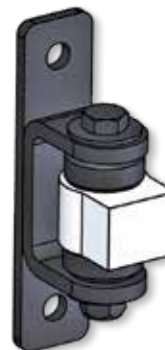
HDBY-AWM-AWM

- Body: Alum, Weld-on, Mill
- Yoke: Alum, Weld-on, Mill
- Gap Min: 2.4"
- Gap Max: 2.9"
- Hinge Height: 4.1"
- Weight: 1.1 lbs each



HDBY-ABM-SWM

- Body: Alum, Bolt-on, Mill
- Yoke: Steel, Weld-on, Mill
- Gap Min: 2.8"
- Gap Max: 3.3"
- Hinge Height: 6.5"
- Weight: 1.9 lbs each

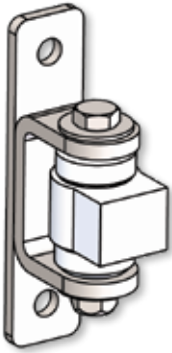


HDBY-AWM-SBB

- Body: Alum, Weld-on, Mill
- Yoke: Steel, Bolt-on, Blk
- Gap Min: 2.7"
- Gap Max: 3.2"
- Hinge Height: 6.5"
- Weight: 2.3 lbs each

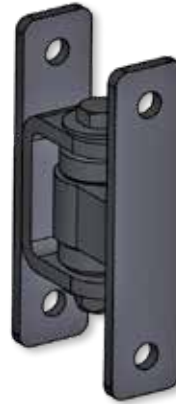
Heavy Duty Sealed Bearing Hinges

All Hinges have **Horizontal Adjustability** of approximately 1/2"



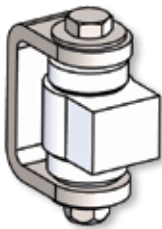
HDBY-AWM-SBM

- ▶ Body: Alum, Weld-on, Mill
- ▶ Yoke: Steel, Bolt-on, Mill
- ▶ Gap Min: 2.7"
- ▶ Gap Max: 3.2"
- ▶ Hinge Height: 6.5"
- ▶ Weight: 2.3 lbs each



HDBY-SBB-SBB

- ▶ Body: Steel, Bolt-on, Blk
- ▶ Yoke: Steel, Bolt-on, Blk
- ▶ Gap Min: 3.0"
- ▶ Gap Max: 3.5"
- ▶ Height: 6.5"
- ▶ Weight: 3.7 lbs each



HDBY-AWM-SWM

- ▶ Body: Alum, Weld-on, Mill
- ▶ Yoke: Steel, Weld-on, Mill
- ▶ Gap Min: 2.5"
- ▶ Gap Max: 3.0"
- ▶ Hinge Height: 4.1"
- ▶ Weight: 1.6 lbs each



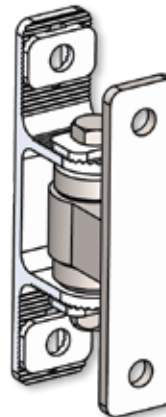
HDBY-SBB-SWM

- ▶ Body: Steel, Bolt-on, Blk
- ▶ Yoke: Steel, Weld-on, Mill
- ▶ Gap Min: 2.8"
- ▶ Gap Max: 3.3"
- ▶ Hinge Height: 6.5"
- ▶ Weight: 3.0 lbs each



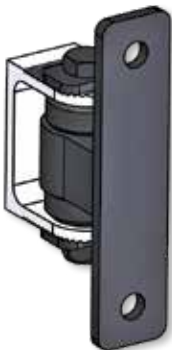
HDBY-SBB-ABB

- ▶ Body: Steel, Bolt-on, Blk
- ▶ Yoke: Alum, Bolt-on, Blk
- ▶ Gap Min: 2.7"
- ▶ Gap Max: 3.2"
- ▶ Vertical Adjustability: 0.75"
- ▶ Hinge Height: 7.2"
- ▶ Weight: 2.7 lbs each



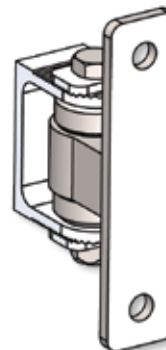
HDBY-SBM-ABM

- ▶ Body: Steel, Bolt-on, Mill
- ▶ Yoke: Alum, Bolt-on, Mill
- ▶ Gap Min: 2.7"
- ▶ Gap Max: 3.2"
- ▶ Vertical Adjustability: 0.75"
- ▶ Hinge Height: 7.2"
- ▶ Weight: 2.7 lbs each



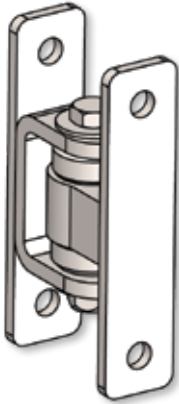
HDBY-SBB-AWM

- ▶ Body: Steel, Bolt-on, Blk
- ▶ Yoke: Alum, Weld-on, Mill
- ▶ Gap Min: 2.7"
- ▶ Gap Max: 3.2"
- ▶ Hinge Height: 6.5"
- ▶ Weight: 2.5 lbs each



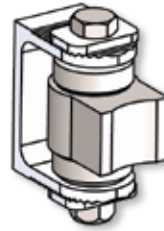
HDBY-SBM-AWM

- ▶ Body: Steel, Bolt-on, Mill
- ▶ Yoke: Alum, Weld-on, Mill
- ▶ Gap Min: 2.7"
- ▶ Gap Max: 3.2"
- ▶ Hinge Height: 6.5"
- ▶ Weight: 2.5 lbs each



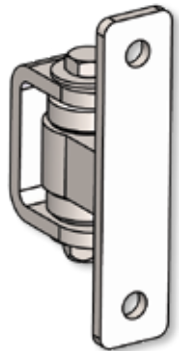
HDBY-SBM-SBM

- Body: Steel, Bolt-on, Mill
- Yoke: Steel, Bolt-on, Mill
- Gap Min: 3.1"
- Gap Max: 3.5"
- Height: 6.5"
- Weight: 3.7 lbs each



HDBY-SWM-AWM

- Body: Steel, Weld-on, Mill
- Yoke: Alum, Weld-on, Mill
- Body fits round or square profile
- Gap Min: 2.5"
- Gap Max: 3.0"
- Height: 4.1"
- Weight: 1.8 lbs each



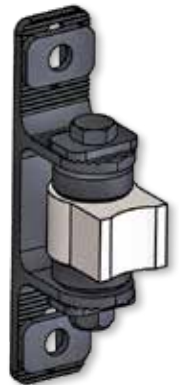
HDBY-SBM-SWM

- Body: Steel, Bolt-on, Mill
- Yoke: Steel, Weld-on, Mill
- Gap Min: 2.8"
- Gap Max: 3.3"
- Hinge Height: 6.5"
- Weight: 3.0 lbs each



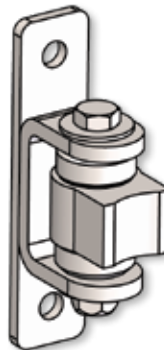
HDBY-SWM-SBB

- Body: Steel, Weld-on, Mill
- Yoke: Steel, Bolt-on, Blk
- Body fits round or square profile
- Gap Min: 2.8"
- Gap Max: 3.3"
- Hinge Height: 6.5"
- Weight: 3.0 lbs each



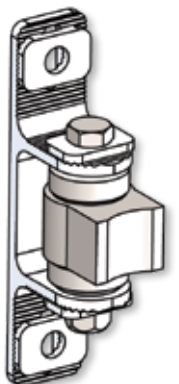
HDBY-SWM-ABB

- Body: Steel, Weld-on, Mill
- Yoke: Alum, Bolt-on, Blk
- Body fits round or square profile
- Gap Min: 2.5"
- Gap Max: 3.0"
- Vertical Adjustability: 0.75"
- Hinge Height: 7.2"
- Weight: 2.0 lbs each



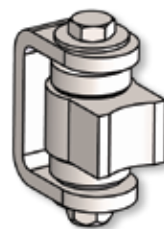
HDBY-SWM-SBM

- Body: Steel, Weld-on, Mill
- Yoke: Steel, Bolt-on, Mill
- Body fits round or square profile
- Gap Min: 2.8"
- Gap Max: 3.3"
- Hinge Height: 6.5"
- Weight: 3.0 lbs each



HDBY-SWM-ABM

- Body: Steel, Weld-on, Mill
- Yoke: Alum, Bolt-on, Mill
- Body fits round or square profile
- Gap Min: 2.5"
- Gap Max: 3.0"
- Vertical Adjustability: 0.75"
- Hinge Height: 7.2"
- Weight: 2.0 lbs each

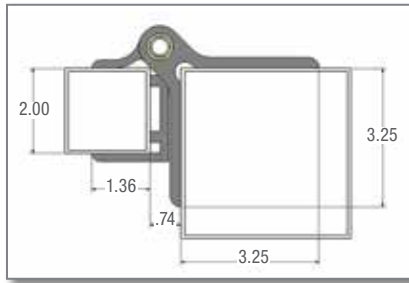


HDBY-SWM-SWM

- Body: Steel, Weld-on, Mill
- Yoke: Steel, Weld-on, Mill
- Body fits round or square profile
- Gap Min: 2.6"
- Gap Max: 3.0"
- Hinge Height: 4.1"
- Weight: 2.3 lbs each

Ornamental Heavy Duty Gate Hinges

Heavy Duty Non Self-Closing Aluminum Hinge



NW216-26 (WI-AIH-BK) Black

NW216-36 (WI-AIH-BZ) Bronze

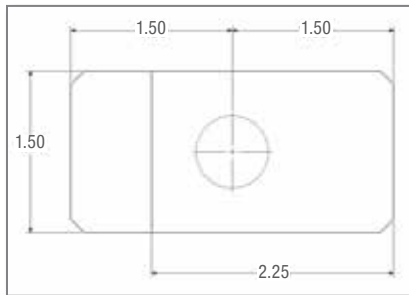
NW216-56 (WI-AIH-WH) White

- ▶ Post flange: 5"(H) x 3 1/4"(W) x 3 1/4"(D)
- ▶ Gate flange: 2 3/8"(H) x 1 5/16"(W) x 2"(D)
- ▶ Gate flange will accommodate both 2" and 1" gate frame
- ▶ 20 each per case @ 34lbs

WI-AIH-2.5-BK Black

- ▶ Gate flange: 2 1/2"
- ▶ 20 each per case @ 35lbs

Heavy Duty Block Hinge for Aluminum Gate



NW6189 (WI-BH)

- ▶ Aluminum
- ▶ Beveled corners, designed to be welded

WI-BH-SA

- ▶ Aluminum to steel block
- ▶ 10 each per case 30lbs

- ▶ 18 each per case @ 45lbs
- ▶ Brass bushings and heavy duty stainless steel pin
- ▶ No grease required

Heavy Duty Steel Barrel Hinge

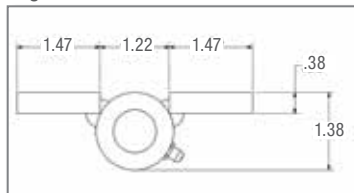
NW6215R-BK Black

NW6215L-BK Black

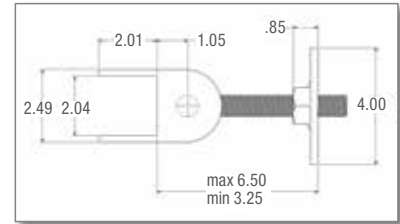
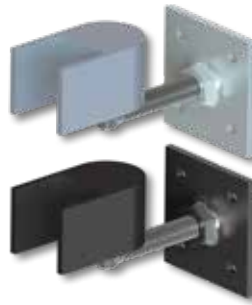
- ▶ Contains grease fitting
- ▶ Steel power coated
- ▶ 6 each per case @ 22lbs



Left Hinge



Heavy Duty Estate Gate Hinge



Rotating Nut Design that adjusts without removing the gate

NW6218 (WI-EH-ASM) Mill (2")

NW6218-BK Black (2")

NW6218-25 Mill (2 1/2")

NW6318S-20 (2")

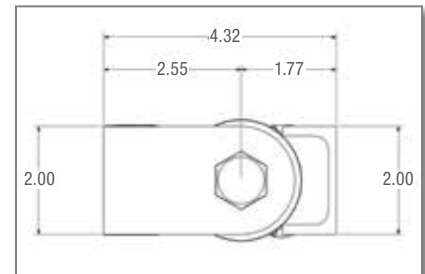
NW6318S-20H (2") w/mounting holes

NW6318S-25 (2 1/2")

NW6318S-25H (2 1/2") w/mounting holes

- ▶ Horizontal adjustability
- ▶ Has an aluminum block for welding
- ▶ Acetal bushing
- ▶ Stainless steel hinge pin
- ▶ Zinc plated steel mounting plate.
- ▶ Fits 2" or 2 1/2" size gate frame.
- ▶ Ships unassembled (weld block to gate, then assemble)
- ▶ 12 each per case @ 40lbs

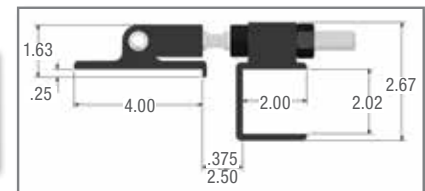
Large Heavy Duty Ball Bearing Hinge



NW6229

- ▶ Zinc plated steel
- ▶ Sealed ball bearings
- ▶ No grease required
- ▶ 4" tall
- ▶ 12 each per case @ 44lbs

Heavy Duty Estate Gate Hinge with Adjustability



NW6242-B-BK Black Bolt-on (bolts included)

NW6242-W-BK Black Weld-on (Special Order)

- ▶ Fits 2" gate frames and posts 4" or larger
- ▶ Aluminum and stainless steel construction
- ▶ Great strength, and **horizontal adjustability**
- ▶ 8 each per case @ 28lbs

Keystone® Series Patented

Heavy Duty Design with Weather Resistant Glass-Filled Nylon Construction

Latch Side

Re-keyable cylinder
Stainless steel striker bar with anti-pull through enlarged tip
Bottom thumb latch protected from rain and dirt

All Keystone® Latches are available in Nylon or Metal and in Black or White



Button Side

Two-Sided Lockable Latch – Nylon

KLADV-P2-BK Black
KLADV-P2-WH White
KLADV-P2ZD-BK Black
KLADV-P2ZD-WH White

- ▶ Locking feature accessible from both sides
- ▶ Reversible for right-hand or left-hand use
- ▶ Glass-filled nylon housing
- ▶ Thumb release button on one side, gravity latch lever on opposite side
- ▶ Can be used on 1-3/4"-5" posts
- ▶ 20 each per case @ 23lbs

All Keystone® 2-Sided Latches are packed with a durable Plastic Marking Template for installation.

Two-Sided Lockable Latch – Metal

KLADV-M2-BK Black
KLADV-M2-WH White
KLADV-M2ZD-BK Black
KLADV-M2ZD-WH White

- ▶ Same as KLADV-P2 but with zinc die cast housing
- ▶ 20 each per case @ 48lbs

Heavy Duty Striker Design on every Keystone® Latch

One-Sided Lockable Latch – Nylon

KLADV-P1-BK Black
KLADV-P1-WH White
KLADV-P1ZD-BK Black
KLADV-P1ZD-WH White

- ▶ Same as KLADV-P2 above but with locking (gravity latch lever) on one side
- ▶ 20 each per case @ 17lbs

One-Sided Lockable Latch

One-Sided Lockable Latch – Metal

KLADV-M1-BK Black
KLADV-M1-WH White
KLADV-M1ZD-BK Black
KLADV-M1ZD-WH White

- ▶ 20 each per case @ 31lbs

Keyless Lock for Ornamental Gates

- ▶ Mechanical Combination Locks - No electronics
- ▶ Passage function may be set for exiting without code
- ▶ Easy code change with any amount of numbers
- ▶ Dead locking spring latch
- ▶ Marine grade interior
- ▶ Slip clutch design - No damage to lock if handle is pushed down too hard
- ▶ Locks never need lubrication

NO NEED FOR A LOCK BOX & NO WELDING

KYPD-ADAPTER-BK



- ▶ Keeper has vertical adjustment and needs to be located on the post
- ▶ Fits a gate frame of 2"-5"
- ▶ Reversible for left and right handed use
- ▶ 10 per box at 15lbs

Two Sided Keypad

KYPD-2D-BK Black
KYPD-2D-SC Satin Chrome

1 Side Keypad & 1 Side Blank

KYPD-2B-BK Black
KYPD-2B-SC Satin Chrome

Keystone® PanicLatch™ Patented

NEW!



Front



Back

KPL-P2-BK Black

- ▶ Self-Locking anti-tamper design
- ▶ Easy exit with large button
- ▶ Secure Entry with 6 pin key
- ▶ 6 each per case @20lbs

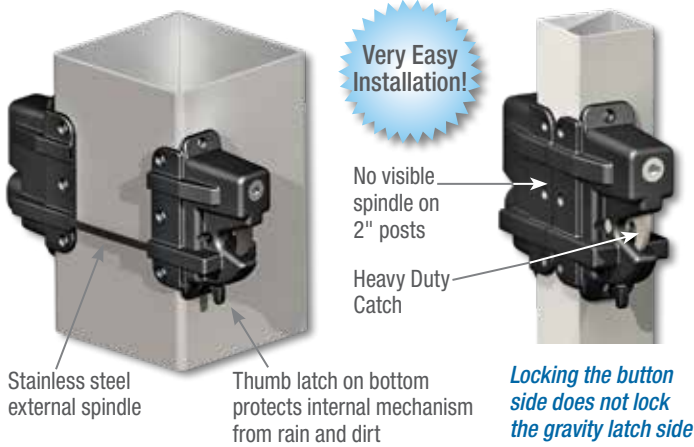
Functions like a panic bar but made for gates



Ornamental Fence Latches

All Lockable Latches can be Keyed Alike
When Ordering: Add KA to the end of the Part Number

The Keystone® X-eXternal Mount Latch Best Stainless Steel External Spindle Design in the Industry Patented



No need to drill spindle holes!



- KLX-P2-BK Black
- KLX-P2-WH White
- KLX-P2ZD-BK Black
- KLX-P2ZD-WH White
- ▶ Marked in 1/2" increments for quick, easy and accurate fitting to post sizes 2" - 5"
- ▶ Flat design safely encloses spindle ends
- ▶ 20 each per case @ 22lbs

- KLX-P1-BK Black
- KLX-P1-WH White
- KLX-P1ZD-BK Black
- KLX-P1ZD-WH White
- ▶ Features Latch only
- ▶ 20 each per case @ 15lbs

Same KLX Latch, with Slimline Design!



- KLX2-P2-BK Black
- KLX2-P2-WH White
- KLX2-P2ZD-BK Black
- KLX2-P2ZD-WH White
- ▶ **Slimline design**
- ▶ 20 each per case @ 20lbs
- KLX2-P1-BK Black
- KLX2-P1-WH White
- KLX2-P1ZD-BK Black
- KLX2-P1ZD-WH White
- ▶ Features Latch only
- ▶ 20 each per case @ 13lbs

TRIDENT™
MAGNETIC GATE LATCH
NATIONWIDE INDUSTRIES



Patented

Enhanced Knob Design

Angled Key Hole Allows easy access

Mounting Brackets Easy Installation

The **TRIDENT™ SAFETY GATE LATCH** has a significant amount of play or vertical tolerance. This helps to avoid problems with sagging gates, and allows for simple installation.



The **SAFE-NOTCH®** feature engages if someone steps or climbs on the gate, further ensuring your gate will stay closed.

With the **LATCH WHEN LOCKED™** feature, the latch will engage even if cylinder is previously locked on the opened gate.

20" TRIDENT™

TRIDENT™ ...strong magnetic closing power, easy installation and guaranteed to last!

- ▶ Sophisticated, modern design
- ▶ Rust-resistant components
- ▶ Meets international pool codes*

*Please check local pool codes prior to use.

Marking on the Keeper Easy to see the maximum amount of gap width

Easy to use markings show proper gate alignment



Ordering Information:

Number	Color	Qty/Case	Weight
TRIDENT20-BK	Black	20	29lbs
TRIDENT20-WH	White	20	29lbs
TRIDENT10-BK	Black	20	20lbs
TRIDENT10-WH	White	20	20lbs



AQUALATCH®

The MAGNETIC Gate Safety Lock with **SAFE-ALERT®**

Patented

1
MILLION
Warranty

20" Height

10" Height

2" Vertical
Adjustment

1-1/2"
Horizontal
Adjustment



Enhanced Knob Design

Flush Surface Connections
No more overlapping
sections on the housing

45 Degree Key Hole Angle
Allows easy access to
the key hole

SAFE-ALERT®

The AquaLatch® is the
only pool latch with Safe-
Alert®! A visible red alert
area under the release
knob appears any time
the latch is not engaged.

Heavy Duty Screw Thread for easy adjustment



Leveling Keeper
Multi-directional leveling
capabilities for gates
installed out of plumb



Thru-Hole in Keeper
New pass-through design
eliminates water retention
in keeper



Handle Option*
Ideal for taller gates

**AQUALATCH®... magnetic closing power,
easy installation and guaranteed to last!**

- ▶ Heavy duty construction
- ▶ Beautiful, modern design
- ▶ Multi-directional leveling for misaligned gates
- ▶ Excellent horizontal and vertical adjustability
- ▶ Fits right or left handed gates
- ▶ Industry-BEST Warranty

*Please check local pool codes prior to use.

Ordering Information:

Number	Color	Description	Height	Qty/Case	Wgt
AQUA10-BK	Black	AquaLatch® w/Std Keeper	10"	20	33lbs
AQUA10-WH	White	AquaLatch® w/Std Keeper	10"	20	33lbs
AQUA10H-BK	Black	AquaLatch® w/Handle/Keeper	10"	20	33lbs
AQUA10H-WH	White	AquaLatch® w/Handle/Keeper	10"	20	33lbs
AQUA20-BK	Black	AquaLatch® w/Std Keeper	20"	20	36lbs
AQUA20-WH	White	AquaLatch® w/Std Keeper	20"	20	36lbs
AQUA20H-BK	Black	AquaLatch® w/Handle/Keeper	20"	20	36lbs
AQUA20H-WH	White	AquaLatch® w/Handle/Keeper	20"	20	36lbs

Adapter available for use with round posts (NW6149-BK).

Magnetic Safety Latches

The Protector®

NW276NE-26 Black
NW276NE-56 White

Key cylinder at 45° for easy
access and protection from
water and debris

Latch height is 19.5"



**19.5" latch height meets pool access
requirements when properly installed**

- ▶ Horizontal and vertical adjustment up to 2"
- ▶ Reversible for right-hand or left-hand use
- ▶ Easy-grip release knob
- ▶ Key cylinder is at a 45° angle for easy access
- ▶ Extruded aluminum body with glass-filled nylon components
- ▶ Packaged in heavy-duty poly bag with stainless steel screws
- ▶ 20 each per case @ 30lbs

The Protector® Jr.

Magnetic Pool Safety Latch

NW308-26 Black
NW308-56 White

Latch height is 10"



- ▶ Same as NW276NE but used for applications with taller fence profiles
- ▶ Total latch height is 10"
- ▶ 20 each per case @ 23lbs

Stainless Steel Gravity Latch

NW38204SSB Black
NW38204SSW White
NW38204SSM Mill
NW38204-SS-BZ Bronze

- ▶ Pad-lockable on one side
- ▶ Stainless steel screws included
- ▶ 50 each per case @ 28lbs



**Round Post Adapter for Chain Link
fits AquaLatch®, TRIDENT™ and Protector®**

Hidden Spring Latches

NW6283-SSB Black w/stainless steel screws included
NW6283-SSBD Black w/stainless steel self-drilling screws included
NW6283-SSW White w/stainless steel screws included
NW6283-SSWD White w/stainless steel self-drilling screws included

- ▶ Suitable for 1-1/4"-2-1/2" gate frames
- ▶ Pad-Lockable on both sides
- ▶ Can be used for Double Drive Gates
- ▶ 20 each per case @ 25lbs



NEW!

Ornamental Fence Latches

Built with Strength and Integrity

ARMORLATCH®

Great for Ornamental and Vinyl Gates

Glass-filled nylon material for low maintenance, with a strong look and feel

- ▶ Locks & unlocks from either side
- ▶ Add aluminum cover plates for metal look and color
- ▶ Re-keyable to home locks
- ▶ Reversible for left or right hand use
- ▶ Easy installation including horizontal & vertical adjustability
- ▶ Works with double drive gates
- ▶ Fits gate frames from 1-1/2" to 5" deep

Patented

Shown with white cover plate

Number	Description	Qty/Case	Weight
NW6244-SD-FB	Flat Black w/self-drilling stainless steel screws	10	21lbs
NW6244-FB	Flat Black w/non self-drilling stainless steel screws	10	21lbs
NW6244CV-BK	Cover Plates Glossy Black	10	6lbs
NW6244CV-MI	Cover Plates Unpainted	10	6lbs
NW6244CV-WH	Cover Plates White	10	6lbs
NW6244CV-BZ	Cover Plates Bronze	10	6lbs



MAGNETIC Latch

- ▶ Self-latching and key-lockable
- ▶ Glass-filled nylon material for low maintenance, strength and durability
- ▶ Locks & unlocks from either side
- ▶ Reversible for left or right hand use without changing components

Number	Qty/Case	Weight
MANTA-L-BK	12	21 lbs
MANTA-L-WH	12	21 lbs



Patented

All Lockable Latches can be Keyed Alike

When Ordering: Add KA to the end of the Part Number

OrnaMAG® Magnetic Gate Latch Patented

An Elegant Look That Will Compliment All Styles!



Vertically Adjustable Keeper

Durable Zinc Powder Coated Housing

Powerful **MAGNETIC** Locking Feature!

Back Plates Included to Accommodate Gate Gap Variance

Back Plate Gap Range:

- ▶ Standard Back Plate 5/16" to 13/16"
- ▶ Offset Back Plate 13/16" to 1-7/16"
- ▶ Self-drilling stainless steel screws and self-drilling steel screws included
- ▶ Great for double drive gates
- ▶ 10 each per case @ 27lbs



OM-L-BK Black

OM-L-BZ Bronze

OM-L-WH White

- ▶ Accommodates up to 2" gate post profile

- ▶ Key locking

- ▶ Reversible for right-hand or left-hand use

Flip Latch

Great for Dumpster Use!

NW6169-BK Black

- ▶ Commercial grade
- ▶ Pad-lockable
- ▶ Zinc plate steel with black powder coated finish
- ▶ Stainless steel through-bolts
- ▶ 10 per case @ 37lbs



WI-DGFL Black

- ▶ Teflon Coated
- ▶ Pad-lockable
- ▶ 12 each per case @ 56 lbs

Fulcrum Latch

2 1/2" Post Size

WI-FL-2-1/2 (NW7060)

WI-FL-2-1/2-BK (NW7060-BK)

6 each per case @ 22lbs

6-5/8" Post Size

WI-FL-6-5/8

WI-FL-6-5/8-BK

▶ 6 each per case

3" Post Size

WI-FL-3 (NW7061)

WI-FL-3-BK (NW7061-BK)

6 each per case @ 24lbs

4" Post Size

WI-FL-4 (NW7062)

WI-FL-4-BK (NW7062-BK)

6 each per case @ 24lbs

- ▶ Heavy Duty Latch for Large Single Swing Gates
- ▶ Fits 2" Gate Frames



Ornamental Fence Latches & Post Caps

Magnetic Side Pull SPL 100 Latch

SPL100-SD-BK

- ▶ Designed for small gates
- ▶ Stainless steel screws included
- ▶ Screws hidden by cover plates
- ▶ Fits 1 1/4" or larger profile
- ▶ 20 each per case @ 8lbs



Side Pull Latches Require a Gate Bumper

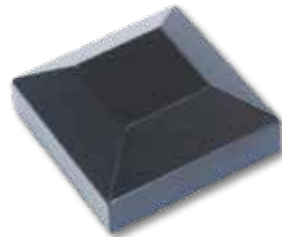
Modern Post Cap – Press Fit

Custom Logos Available

(requires minimum run quantity)

WI-IPC-200 Mill

- ▶ 2" Aluminum Post Cap
- ▶ Shorter lip than the NW230NL Series
- ▶ 250 per case @ 22lbs



NW230NL-SBL (WI-RPC-2NL) Mill

NW230NL-26 (WI-RPC-2NL-BK) Black

NW230NL-36 (WI-RPC-2NL-BZ) Bronze

NW230NL-BZ2 Lt. Bronze

NW230NL-56 (WI-RPC-2NL-WH) White

- ▶ 2" Aluminum die cast
- ▶ 250 each per case @ 22lbs

WI-IPC-250 Mill

- ▶ 2.5" Aluminum Post Cap
- ▶ Shorter lip than the NW240NL
- ▶ 300 per case @ 39 lbs

NW240NL-SBL Mill

NW240NL-26 Black

NW240NL-36 Bronze

NW240NL-56 White

- ▶ 2.5" Aluminum die cast
- ▶ 300 each per case @ 41lbs

WI-IPC-300 Mill

- ▶ 3" Aluminum Post Cap
- ▶ 300 per case @ 39 lbs

WI-IPC-400 Mill

- ▶ 4" Aluminum Post Cap
- ▶ 144 per case @ 39 lbs

WI-IPC-150 Mill

- ▶ 1.5" Aluminum Post Cap
- ▶ Shorter lip than the NW291
- ▶ 500 per case @ 25 lbs

NW291-SBL Mill

- ▶ 1.5" Aluminum die cast
- ▶ 500 each per case @ 27lbs
- ▶ Colors available with special order

NW6276-SBL Mill

NW6276-BK Black

- ▶ 6" Aluminum die cast
- ▶ Sandblast finish
- ▶ 50 each per case @ 47lbs

Plastic

NW6230-BK Black

- ▶ 2" Plastic post cap
- ▶ 325 each per case @ 15lbs

Traditional Post Cap – Press Fit

Zinc

NW220-MI Mill

- ▶ 2" Zinc die cast
- ▶ 250 each per case @ 39lbs

NW244-MI Mill

- ▶ 2.5" Zinc die cast
- ▶ 120 each per case @ 25lbs

Aluminum

NW6099-MI Mill

NW6099-BK Black

NW6099-BZ Bronze (Special Order)

NW6099-WH White

- ▶ 2" Aluminum die cast
- ▶ 250 each per case @ 22lbs



NW6196-SBL Mill

NW6196-BK Black

NW6196-BZ Bronze

NW6196-WH White

(All Special Order)

- ▶ 2.5" Aluminum die cast
- ▶ 250 each per case @ 23lbs

NW6098-SBL Mill

NW6098-BK Black

NW6098-BZ Bronze

NW6098-WH White (Special Order)

- ▶ 3" Aluminum die cast
- ▶ 100 each per case @ 23lbs

NW6084-MI Mill

NW6084-BK Black

- ▶ 4" Aluminum die cast
- ▶ 100 each per case @ 35lbs

STEEL Post Caps

NW6208-BK Black (Special Order)

- ▶ 1" Steel die cast
- ▶ 250 each per case @ 36lbs

NW6209-BK Black (Special Order)

- ▶ 1.5" Steel die cast
- ▶ 250 each per case @ 36lbs



NW6210-BK Black

2" Steel die cast

- ▶ 250 each per case @ 36lbs

NW6211-BK Black

2.5" Steel die cast

- ▶ 100 each per case @ 22lbs



NW6212-BK Black

3" Steel die cast

- ▶ 100 each per case @ 29lbs

NW6213-BK Black

4" Steel die cast

- ▶ 50 each per case @ 26lbs

Ornamental Fence Ball Caps

Ball Caps – Press Fit **Custom Logos Available** (requires minimum run quantity)



The Ball Caps below are also available with hole for set screws. When Ordering: add an "H" after the number in the part number.

Examples: NW6166H-MI Mill
NW6191H-SBL Mill



NW6166-MI Mill
NW6166-BK Black
NW6166-BZ Bronze
NW6166-WH White

- ▶ 2" Aluminum die cast - ball cap
- ▶ 50 each per case @ 15lbs

NW6191-SBL Mill
NW6191-BK Black
NW6191-BZ Bronze (Special Order)
NW6191-WH White (Special Order)

- ▶ 3" Aluminum die cast - ball cap
- ▶ 50 each per case @ 20lbs

NW6179-SBL Mill
NW6179-BK Black
NW6179-BZ Bronze
NW6179-WH White (Special Order)

- ▶ 2.5" Aluminum die cast - ball cap
- ▶ 50 each per case @ 18lbs

NW6193-MI Mill
NW6193-BK Black
NW6193-BZ Bronze (Special Order)
NW6193-WH White (Special Order)

- ▶ 4" Aluminum die cast - ball cap
- ▶ 50 each per case @ 42lbs

NW242-SBL Mill

- ▶ 2" Aluminum die cast - **Screw Set**
- ▶ 72 each per case @ 41lbs

NW242A-MI Mill

- ▶ 2" Aluminum die cast - **Press Fit**
- ▶ 72 per case @ 41lbs

NW242B-SBL Mill (Special Order)
NW242B-BK Black

- ▶ Fits a True 2" post
- ▶ Aluminum die cast - **Press Fit**
- ▶ 72 per case @ 41lbs



NW290A-SBL Mill

- ▶ 2.5" Aluminum die cast - **Press Fit**
- ▶ 80 each per case @ 43lbs

NW6097-SBL Mill

- ▶ 3" Aluminum die cast - **Press Fit**
- ▶ 50 each per case @ 34lbs

Ball Caps – Press Fit

WI-IBC-200 Mill

- ▶ 2" Aluminum Die Cast

WI-IBC-250 Mill

WI-IBC-250-BK Black

- ▶ 2.5" Aluminum Die Cast

WI-IBC-300 Mill

- ▶ 3" Aluminum Die Cast

UBC4 Mill

- ▶ 4" Aluminum Die Cast

- ▶ All 50 per case



Ornamental Fence Finials

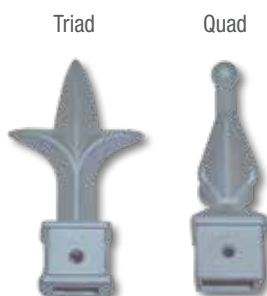
SLIM LINE



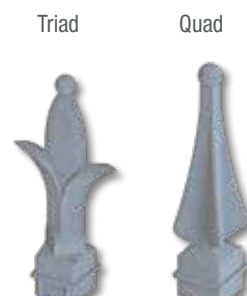
NW233PF, NW234PF
NW235PF, NW236PF



NW212, NW213,
NW245, NW246, NW249
NW250, NW251, NW252



NW233, NW234
NW235, NW236



NW6200, NW6201, NW6202
NW6203, NW6204, NW6205
NW6206, NW6207

Fleur De Lis



NW6231, NW6232

Mill Finish On All Finials

Some Finials May Be Special Order. Please Contact Customer Service for Availability.

When ordering Color, Substitute the MI or SBL in the Item No.
with BK (Black), BZ (Bronze), BZ2 (Bronze), or WH (White).



NW6253
Larger
Fleur de Lis on
standard base



NW6277-SBL
1" Fleur de Lis
sandblast finish

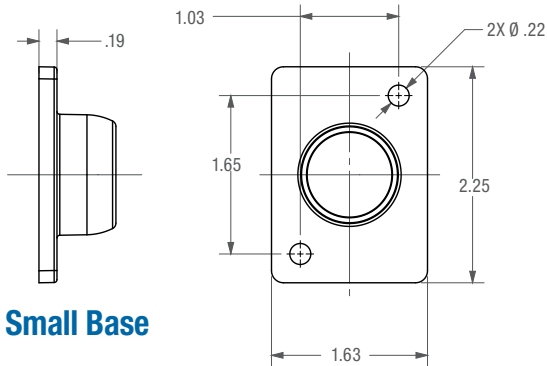
ITEM NO	STYLE	WITH HOLE	PRESS FIT or SLIP-ON	MATERIAL	OPTIMUM PICKET O.D.	QTY/CASE	WEIGHT /CASE
5/8"							
NW233-MI	Triad	Y	SO	Aluminum	0.635	300	42
NW233PF-SBL	Triad	N	PF	Aluminum	0.600	300	42
NW233PFH-SBL	Triad	Y	PF	Aluminum	0.600	300	42
NW235-SBL	Quad	Y	SO	Aluminum	0.635	300	45
NW235PF-SBL	Quad	N	PF	Aluminum	0.600	300	45
NW235PFH-SBL	Quad	Y	PF	Aluminum	0.600	300	45
NW6202-SBL	Quad	N	SO	Aluminum	0.600	300	23
NW6202H-SBL	Quad	Y	SO	Aluminum	0.600	300	23
NW6202HA-SBL	Quad	Y	SO	Aluminum	0.625	300	23
NW6202PFTS-SBL	Quad	N	PF	Aluminum	0.600	300	23
NW6206-SBL	Triad	N	SO	Aluminum	0.600	300	23
NW6206H-SBL	Triad	Y	SO	Aluminum	0.600	300	23
NW6206PFTS-SBL	Triad	N	PF	Aluminum	0.600	300	23
NW212-MI	Quad	N	PF	Zinc	0.600	250	42
NW213-MI	Triad	N	SO	Zinc	0.600	250	42
NW6231-SBL	Fleur de Lis	N	SO	Aluminum	0.600	300	27
NW6231H-SBL	Fleur de Lis	Y	SO	Aluminum	0.600	300	27
NW6231PFTS-SBL	Fleur de Lis	N	PF	Aluminum	0.600	300	27
NW6253-SBL	Fleur de Lis	N	PF	Aluminum	0.600	300	41
3/4"							
NW234-MI	Triad	Y	SO	Aluminum	0.750	300	51
NW234PF-SBL	Triad	N	PF	Aluminum	0.720	300	51
NW234PFH-SBL	Triad	Y	PF	Aluminum	0.720	300	51
NW234PF75-SBL	Triad	N	PF	Aluminum	0.750	300	51
NW234PFH75-SBL	Triad	Y	PF	Aluminum	0.750	300	51

Ornamental Fence Finials

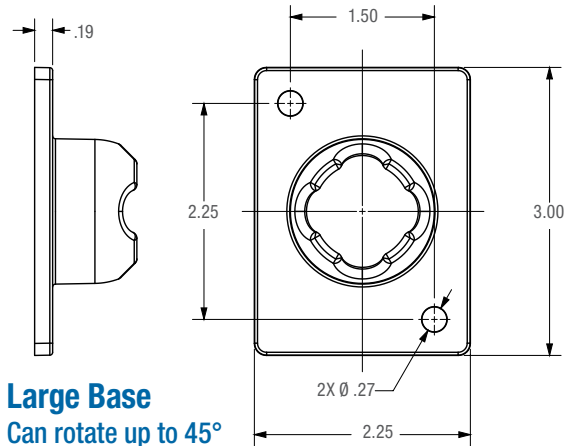
ITEM NO	STYLE	HOLE	PRESS FIT or SLIP-ON	MATERIAL	OPTIMUM PICKET O.D.	QTY/CASE	WEIGHT / CASE
3/4" Continued							
NW236-SBL	Quad	Y	SO	Aluminum	0.750	300	51
NW236PF-SBL	Quad	N	PF	Aluminum	0.720	300	51
NW236PFH-SBL	Quad	Y	PF	Aluminum	0.720	300	51
NW236PF75-SBL	Quad	N	PF	Aluminum	0.750	300	51
NW236PFH75-SBL	Quad	Y	PF	Aluminum	0.750	300	51
NW6201-SBL	Quad	N	SO	Aluminum	0.720	300	26
NW6201H-SBL	Quad	Y	SO	Aluminum	0.720	300	26
NW6201PFTS-SBL	Quad	N	PF	Aluminum	0.750	300	26
NW6205-SBL	Triad	N	SO	Aluminum	0.720	300	28
NW6205H-SBL	Triad	Y	SO	Aluminum	0.720	300	28
NW6205PFTS-SBL	Triad	N	PF	Aluminum	0.750	300	28
NW249-MI	Quad	N	SO	Zinc	0.750	250	49
NW249IT-MI	Quad	N	PF	Zinc	0.750	250	49
NW250IT-MI	Triad	N	PF	Zinc	0.750	250	46
NW250-MI	Triad	N	SO	Zinc	0.750	250	46
NW6232-SBL	Fleur de Lis	N	SO	Aluminum	0.750	300	26
NW6232H-SBL	Fleur de Lis	Y	SO	Aluminum	0.750	300	26
NW6232PFTS-SBL	Fleur de Lis	N	PF	Aluminum	0.750	300	26
1"							
NW6200-SBL	Quad	N	SO	Aluminum	1.00	300	31
NW6200H-SBL	Quad	Y	SO	Aluminum	1.00	300	31
NW6204-SBL	Triad	N	SO	Aluminum	1.00	300	29
NW6204H-SBL	Triad	Y	SO	Aluminum	1.00	300	29
NW245-MI	Quad	N	SO	Zinc	1.00	200	41
NW245IT-MI	Quad	N	PF	Zinc	1.00	200	41
NW246-MI	Triad	N	SO	Zinc	1.00	200	41
NW246IT-MI	Triad	N	PF	Zinc	1.00	200	41
NW6277-SBL	Fleur de Lis	N	SO	Aluminum	1.00	200	42
NW6277H-SBL	Fleur de Lis	Y	SO	Aluminum	1.00	200	42
5/8" X 1"							
NW6203-SBL	Quad	N	SO	Aluminum	.600 X 1.00	300	29
NW6203H-SBL	Quad	Y	SO	Aluminum	.600 X 1.00	300	29
NW6203PFTS-SBL	Quad	N	PF	Aluminum	.600 X 1.00	300	29
NW6207-SBL	Triad	N	SO	Aluminum	.600 X 1.00	300	26
NW6207H-SBL	Triad	Y	SO	Aluminum	.600 X 1.00	300	26
NW6207PFTS-SBL	Triad	N	PF	Aluminum	.625 X 1.00	300	26
NW251-MI	Quad	N	SO	Zinc	.600 X 1.00	200	38
NW252-MI	Triad	N	SO	Zinc	.600 X 1.00	200	38

Ornamental Wall Mount Brackets

Swivel Ball Bracket Bases



Small Base



Large Base
Can rotate up to 45°

1" X 1"

Square Dual Flange Wall Mount Bracket

- NW280-SBL Mill
- NW280-BK Black
- NW280-BZ Bronze (Special Order)
- NW280-BZ2 Light Bronze (Special Order)
- NW280-WH White (Special Order)

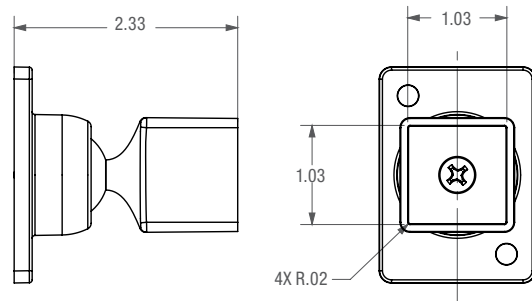
- 1" x 1"
- Aluminum die cast
- 500 per case @ 44lbs



Swivel Ball Bracket

- NW6192-SBL Mill
- NW6192-BK Black
- NW6192-BZ Bronze (Special Order)
- NW6192-WH White (Special Order)

- 1" x 1" **Small Base**
- Aluminum die cast
- 100 each per case @ 18lbs



1" X 1 1/8"

Single Flange Wall Mount Bracket

- NW211-MI Mill

- 1" x 1 1/8"
- Rounded Top Corners**
- Aluminum die cast
- 300 each per case @ 38lbs

- NW211-MI-2 Mill

- NW211-BK-2 Black

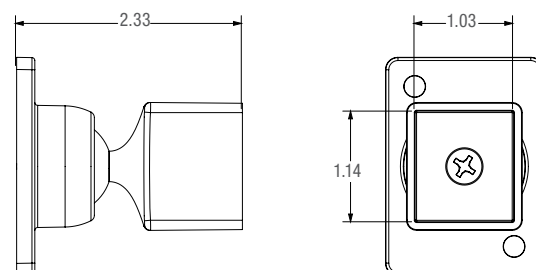
- 1" x 1 1/8"
- Squared in all Corners**
- Aluminum die cast
- 300 each per case @ 38lbs



Swivel Ball Bracket

- NW6266-SBL Mill
- NW6266-BK Black
- NW6266-BZ Bronze (Special Order)
- NW6266-WH White (Special Order)

- 1" x 1 1/8" **Small Base**
- Aluminum die cast
- 100 each per case @ 19lbs



Ornamental Wall Mount Brackets

1" X 1 1/2"

Single Flange Wall Mount Bracket

NW217-SBL Mill

NW217-26 Black (Special Order)

NW217-36 Bronze (Special Order)

NW217-56 White (Special Order)

- ▶ 1" x 1 1/2"
- ▶ Aluminum die cast
- ▶ 240 each per case @ 44lbs



Swivel Ball Bracket

NW6239-SBL Mill

NW6239-BK Black (Special Order)

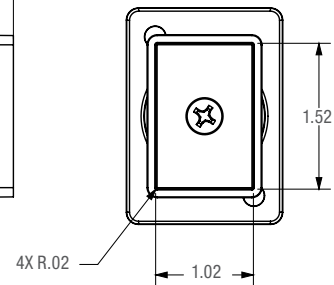
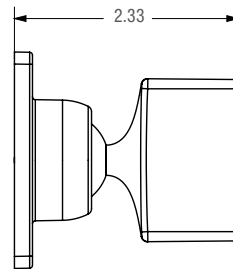
NW6239-BZ Bronze (Special Order)

NW6239-WH White (Special Order)

- ▶ 1" x 1 1/2" **Small Base**
- ▶ Aluminum die cast
- ▶ 100 per case @ 21lbs
- All Special Order



Turn and angle in any direction



Rectangular Dual Flange Wall Mount Bracket

NW6167-MI Mill

- ▶ 1" x 1 1/2"
- ▶ Aluminum die cast
- ▶ 250 per case @ 38lbs



1 1/8" X 1 1/8"

Adjustable Dual Flange Wall Mount Bracket

NW6075V-BK Black

NW6075V-BZ Bronze

NW6075V-WH White

NW6075V-SBL Mill (Special Order)

- ▶ 1 1/8" x 1 1/8"
- ▶ Aluminum die cast
- ▶ Adjustable for angle or rake rails
- ▶ 100 each per case @ 29lbs



Adjustable Dual Flange Wall Mount Bracket

NW6075-SBL Mill

NW6075-BK Black

NW6075-BZ Bronze

NW6075-WH White

- ▶ 1 1/8" x 1 1/8"
- ▶ Aluminum die cast
- ▶ Adjustable for angle or rake rails
- ▶ 100 each per case @ 20lbs



1 1/4" X 1 1/4"

Single Flange Wall Mount Bracket

NW211A-MI Mill

- ▶ 1 1/4" x 1 1/4"
- ▶ Aluminum die cast
- ▶ 300 each per case @ 30lbs



All Painted Swivel
Ball & Adjustable
Brackets are Assembled

Swivel Ball Bracket

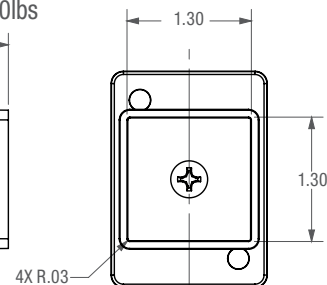
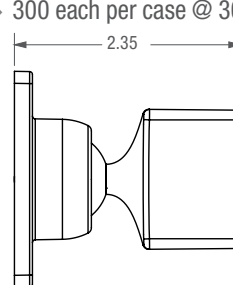
NW6220-SBL Mill

NW6220-BK Black

NW6220-BZ Bronze (Special Order)

NW6220-WH White (Special Order)

- ▶ 1 1/4" x 1 1/4" **Small Base**
- ▶ Aluminum die cast
- ▶ 300 each per case @ 30lbs



Ornamental Wall Mount Brackets

1 1/4" X 1 1/2"

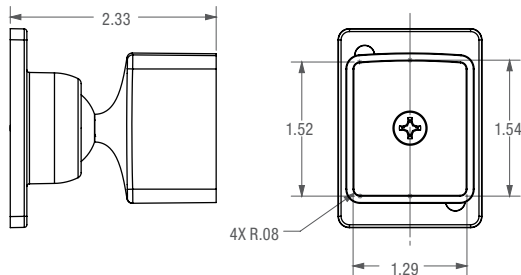
Swivel Ball Bracket

NW6216-SBL Mill
NW6216-BK Black
NW6216-BZ Bronze
NW6216-WH White

- ▶ 1 1/4" x 1 1/2" **Small Base**
- ▶ Aluminum die cast
- ▶ 100 each per case @ 21lbs

All Special Order

Turn and angle in any direction



1 3/8" X 1 3/8"

Adjustable Dual Flange Wall Mount Bracket

NW6075A-SBL Mill
NW6075A-BK Black (Special Order)
NW6075A-BZ Bronze (Special Order)
NW6075A-WH White (Special Order)

- ▶ 1 3/8" x 1 3/8"
- ▶ Aluminum die cast
- ▶ Adjustable for angle or rake rails
- ▶ 100 each per case @ 29lbs



Note: Any brackets used in railing applications should be tested within the railing system to any applicable codes.

1 1/2" X 1 1/2"

Single Flange Wall Mount Bracket

NW292-SBL Mill

- ▶ 1 1/2" x 1 1/2"
- ▶ Aluminum die cast
- ▶ 100 each per case @ 30lbs



NOTE!

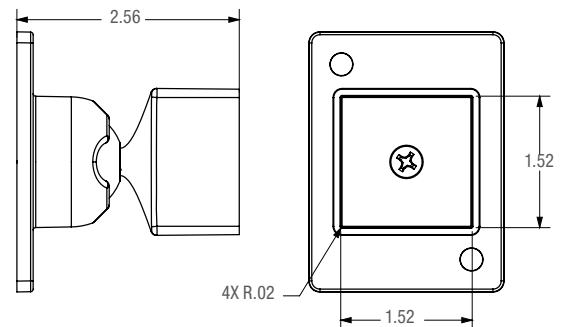
Bronze now comes in 2 shades!
BZ or (-36) is our standard dark bronze
BZ2 is a lighter bronze
Check for availability or minimum order quantity

All Painted Swivel Ball & Adjustable Brackets are Assembled

Swivel Ball Bracket

NW6240-SBL Mill
NW6240-BK Black (Special Order)
NW6240-BZ Bronze (Special Order)
NW6240-WH White (Special Order)

- ▶ 1 1/2" x 1 1/2" **large base**
- ▶ Aluminum die cast
- ▶ 100 each per case @ 35lbs



Bread Loaf Rail Brackets

NW6258-SBL Mill
NW6258-BK Black
NW6258-BZ Bronze (Special Order)
NW6258-BZ2 Lighter Bronze (Special Order)
NW6258-WH White (Special Order)

- ▶ Aluminum die cast
- ▶ 100 each per case @ 44lbs



NW6259-SBL Mill
NW6259-BK Black
NW6259-BZ Bronze (Special Order)
NW6259-BZ2 Lighter Bronze (Special Order)
NW6259-WH White (Special Order)

- ▶ 150 each per case @ 25lbs



Ornamental Wall Mount and Hand Rail Brackets

1 5/8" X 1 5/8"

Square Dual Flange Wall Mount Bracket

NW243-SBL Mill

- ▶ 1 5/8" x 1 5/8"
- ▶ Aluminum die cast
- ▶ 240 each per case @ 47lbs



Adjustable Dual Flange Wall Mount Bracket

NW279-SBL Mill Cup

NW279BP-SBL Mill Base Plate

- ▶ 1 5/8" x 1 5/8"
- ▶ Aluminum die cast
- ▶ Adjustable for angle or rake rails
- ▶ 100 each per case @ 29lbs



The 1 5/8" X 1 5/8" Wall Mount Bracket needs both the Cup and Base Plate and must be ordered together!

Swivel Ball Bracket

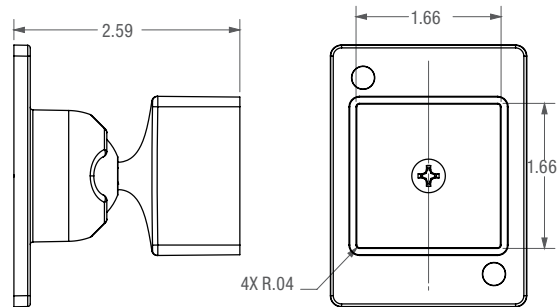
NW6217-SBL Mill (Special Order)

NW6217-BK Black

NW6217-BZ Bronze (Special Order)

NW6217-WH White (Special Order)

- ▶ 1 5/8" x 1 5/8" **large base**
- ▶ Aluminum die cast
- ▶ 100 each per case @ 22lbs



1 3/4" X 1 3/4"

Straight Wall Mount Bracket

NW6247-SBL Mill

NW6247-BK Black (Special Order)

NW6247-BZ Bronze (Special Order)

NW6247-WH White (Special Order)

- ▶ 1 3/4" x 1 3/4"
- ▶ Aluminum die cast
- ▶ 150 each per case @ 34lbs



Swivel Ball Bracket

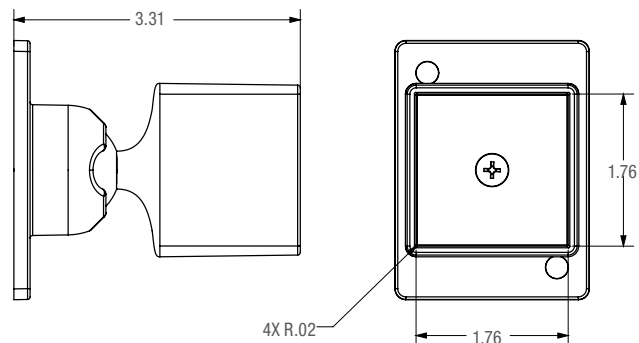
NW6235-SBL Mill

NW6235-BK Black (Special Order)

NW6235-BZ Bronze (Special Order)

NW6235-WH White (Special Order)

- ▶ 1 3/4" x 1 3/4" **large base**
- ▶ Aluminum die cast
- ▶ 100 each per case @ 43lbs



Hand Rail Bracket

Straight Hand Rail Bracket

NW6265-SBL Mill (Special Order)

NW6265-BK Black (Special Order)

NW6265-BZ Bronze (Special Order)

NW6265-WH White (Special Order)

- ▶ Aluminum die cast
- ▶ 200 each per case @ 27lbs



All Painted Swivel Ball & Adjustable Brackets are Assembled

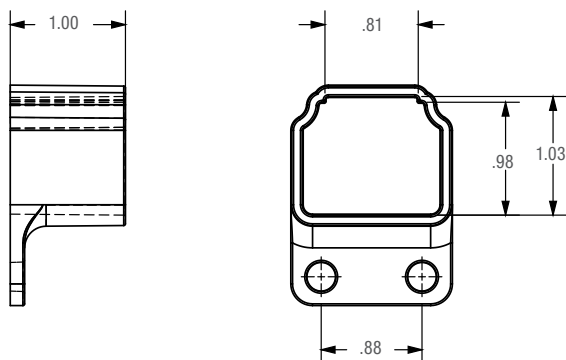
Ornamental Wall Mount and Rail Brackets

Deco Brackets

Residential Straight Wall Bracket

NW6226-SBL Mill
NW6226-BK Black
NW6226-BZ Bronze (Special Order)
NW6226-WH White (Special Order)

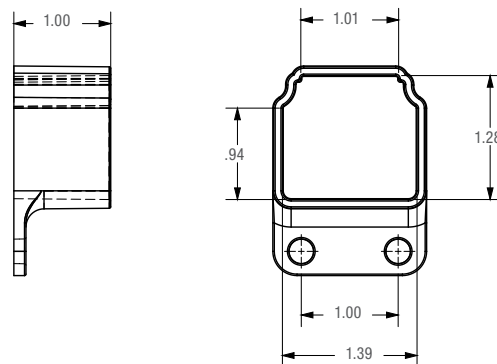
- ▶ Aluminum die cast
- ▶ 350 each per case @ 19lbs



Commercial Straight Wall Bracket

NW6227-SBL Mill
NW6227-BK Black
NW6227-BZ Bronze (Special Order)
NW6227-WH White (Special Order)

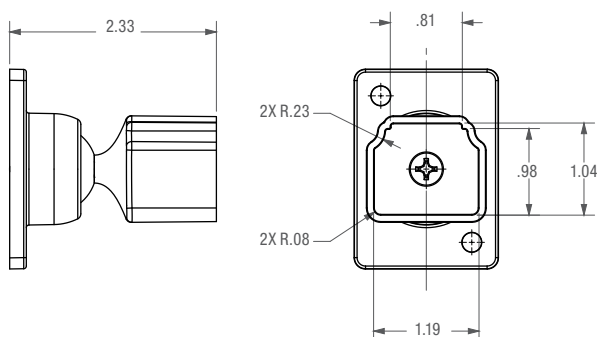
- ▶ Aluminum die cast
- ▶ 350 each per case @ 23lbs



Residential Swivel Ball Bracket

NW6195-SBL Mill
NW6195-BK Black
NW6195-BZ Bronze (Special Order)
NW6195-WH White (Special Order)

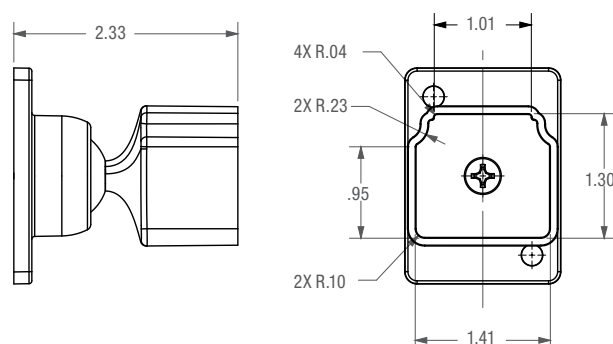
- ▶ **Small Base**
- ▶ Aluminum die cast
- ▶ 100 each per case @ 19lbs



Commercial Swivel Ball Bracket

NW6228-SBL Mill
NW6228-BK Black
NW6228-BZ Bronze (Special Order)
NW6228-WH White (Special Order)

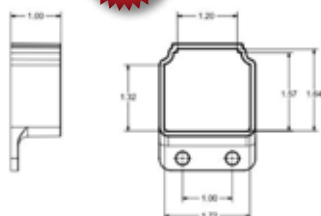
- ▶ **Small Base**
- ▶ Aluminum die cast
- ▶ 100 each per case @ 16lbs



Industrial Straight Wall Bracket

NW6309-SBL Mill
NW6309-BK Black
NW6309-BZ Bronze (Special Order)
NW6309-WH White (Special Order)

- ▶ Aluminum die cast
- ▶ 250 each per case @ 27lbs

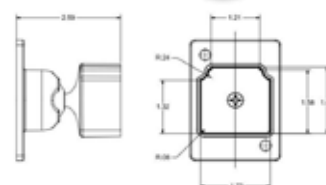


NEW!

Industrial Swivel Ball Bracket

NW6308-SBL Mill
NW6308-BK Black
NW6308-BZ Bronze (Special Order)
NW6308-WH White (Special Order)

- ▶ Aluminum die cast
- ▶ 100 each per case @ 34lbs



NEW!

Ornamental Wall Mount Brackets and End Caps

1" X 2"

Rectangular Dual Flange Rail Mount Bracket

NW6233-SBL Mill

Accommodates a 1" x 2" rail
Dual Flange Wall Mount

- ▶ Aluminum die cast
- ▶ 100 each per case @ 13lbs



Rectangular Single Flange Rail Mount Bracket

NW6241-SBL Mill

Accommodates a 1" x 2" rail

- ▶ Aluminum die cast
- ▶ Top/bottom mounting holes
- ▶ 200 each per case @ 24lbs



Flat Wall Mount Bracket

WI-SL1X2

- ▶ 168 per case @ 30lbs.



2-1/8" X 1-1/8"

Flat Wall Mount Bracket

WI-SL2X1-B

- ▶ 216 per case @ 41lbs



Flat Wall Mount Bracket

WI-SL2X1-S

- ▶ 200 per case @ 32lbs.



1" X 1 5/8"

Round Single Flange Wall Mount Bracket

NW6238-SBL Mill

- ▶ 1" x 1 5/8"
- ▶ Aluminum die cast
- ▶ 300 each per case @ 52lbs



Patio Railing Brackets

'V' Flange Wall Mount Bracket

NW272-36 (WI-SMB-36) Bronze

NW272-56 (WI-SMB-56) White

NW272-76 (WI-SMB-M) Mill

- ▶ Accepts both bottom channel & snap plate
- ▶ 1" x 1 13/16" opening
- ▶ Aluminum die cast
- ▶ 280 each per case @ 42lbs



Patio Railing Brackets

Rectangular Dual Flange Wall Mount Bracket

NW268-36 Bronze

NW268-56 White

NW268-76 Mill

- ▶ Accommodates a 1" X 1 7/8 "rail
- ▶ Aluminum die cast
- ▶ Accepts both bottom channel and snap plate
- ▶ 168 each per case @ 50lbs



Patio Railing Brackets

Mushroom Single Flange Mount Bracket

NW270-36 Bronze

NW270-56 White

NW270-76 Mill

- ▶ Accommodates a 1 5/8" x 2 5/8" rail O.D.
- ▶ Aluminum die cast
- ▶ 160 each per case @ 47lbs



Mushroom Railing End Cap

NW269-36 Bronze

NW269-56 White

NW269-76 Mill

- ▶ Accommodates a 1 5/8" x 2 1/4" rail I.D.
- ▶ Aluminum die cast
- ▶ 300 each per case @ 47lbs



Round Top Single Flange Mount Bracket

NW271-26 Black

NW271-36 Bronze

NW271-56 White

NW271-76 Mill

- ▶ Accommodates a 1 5/8" x 2" rail O.D.
- ▶ Aluminum die cast
- ▶ 210 each per case @ 43lbs



Round Top Railing End Cap

NW267-36 Bronze

NW267-56 White

NW267-76 Mill

- ▶ Accommodates a 1 1/4" x 1 3/4" rail I.D.
- ▶ Aluminum die cast
- ▶ 300 each per case @ 40lbs



Floor Mount

Aluminum Die Cast

NW273-36 (WI-HR-4A-BZ) Bronze

NW273-56 (WI-HR-4A-WH) White

NW273-76 Mill

- ▶ Accommodates a 1 7/8" x 1 1/2" post
- ▶ Profile height: 1 3/4"
- ▶ Flange: 4 3/8" x 4 3/8"
- ▶ 45 each per case @ 41lbs



Ornamental Floor Mounts and Cover Plates

Floor Mounts

All Floor Mount Brackets are Aluminum Die Cast

NW302-MI (WI-2X2B) Mill

NW302H-MI Mill with hole for set screw

NW302-26 (WI-2X2B-BK) Black

NW302-36 (WI-2X2B-BZ) Bronze

NW302-56 (WI-2X2B-WH) White

Accommodates a 2" x 2" post

- ▶ Profile height: 1 3/4"
- ▶ Flange: 4 3/8" x 4 3/8"
- ▶ 50 each per case @ 44lbs



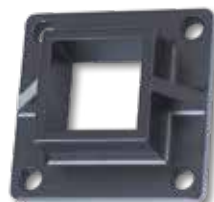
NW6187H-MI Mill with hole for set screw

NW6187H-BK Black with hole for set screw

NW6187H-BZ Bronze with hole for set screw (Special Order)

NW6187H-WH White with hole for set screw (Special Order)

- ▶ Accommodates a 2 1/2" x 2 1/2" post
- ▶ Profile height: 1 3/4"
- ▶ Flange: 4 7/8" x 4 7/8"
- ▶ 40 each per case @ 44lbs



NW6173H-MI Mill with hole for set screw

NW6173H-BK Black with hole for set screw

NW6173H-BZ Bronze with hole for set screw (Special Order)

NW6173H-WH White with hole for set screw (Special Order)

Accommodates a 3" x 3" post

- ▶ Profile height: 1 3/4"
- ▶ Flange: 5 3/8" x 5 3/8"
- ▶ 20 each per case @ 38lbs

Premium Floor Mount Brackets

NW6248-SBL Mill

NW6248-BK Black (Special Order)

NW6248-BZ Bronze (Special Order)

NW6248-WH White (Special Order)

- ▶ Accommodates 2" posts
- ▶ Aluminum die cast
- ▶ OD: 5"x 1.72" high
- ▶ 50 each per case @ 60lbs



NW6249-SBL Mill (Special Order)

NW6249-BK Black (Special Order)

NW6249-BZ Bronze (Special Order)

NW6249-WH White (Special Order)

- ▶ Accommodates 2 1/2" posts
- ▶ Aluminum die cast
- ▶ OD: 5"x 1.72" high
- ▶ 50 each per case @ 58lbs



NW6248/49PLUGBK Black

- ▶ Bolt Hole Cover for Premium Floor Mounts
- ▶ Each – Order amount needed



One Piece Cover Plate

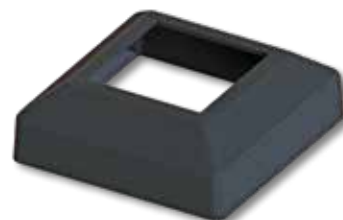
NW6197-SBL Mill

NW6197-BK Black

NW6197-BZ Bronze

NW6197-WH White

- ▶ Accommodates a 2" x 2" post
- ▶ Profile height: 1 7/8"
- ▶ OD: 4 3/4" x 4 3/4"
- ▶ Fits Over **NW302**
- ▶ 50 each per case @ 25lbs



All Bronze and White Part Numbers are Special Order

NW6198-SBL Mill

NW6198-BK Black

NW6198-BZ Bronze

NW6198-WH White

- ▶ Accommodates a 2 1/2" x 2 1/2" post
- ▶ Profile height: 1 7/8"
- ▶ OD: 5 1/4" x 5 1/4"
- ▶ Fits Over **NW6187**
- ▶ 50 each per case @ 29lbs

NW6190-MI Mill

NW6190-BK Black

NW6190-BZ Bronze

NW6190-WH White

- ▶ Accommodates a 3" x 3" post
- ▶ Profile height: 1 7/8"
- ▶ OD: 5 21/32" x 5 21/32"
- ▶ Fits Over **NW6173**
- ▶ 50 each per case @ 32lbs

Two Piece Cover Plate

All Bronze and White Part Numbers are Special Order



NW6243-SBL Mill

NW6243-BK

(WI-2PCS-PB-2X2B) Black

NW6243-BZ Bronze

NW6243-WH White

- ▶ Accommodates a 2" x 2" post
- ▶ Profile height: 1 7/8"
- ▶ Flange: 4 3/4" x 4 3/4"
- ▶ Fits Over **NW302**
- ▶ 50 each per case @ 24lbs

NW6269-SBL Mill

NW6269-BK Black

NW6269-BZ Bronze

NW6269-WH White

- ▶ Accommodates a 2 1/2" x 2 1/2" post
- ▶ Profile height: 1.9"
- ▶ Flange: 5 1/5" x 5 1/5"
- ▶ Fits Over **NW6187**
- ▶ 50 each per case @ 29lbs

Two Piece "Core" Cover Plate Hides Concrete Residue

All Bronze and White Part Numbers are Special Order



NW6257-SBL Mill

NW6257-BK Black

NW6257-BZ Bronze

NW6257-WH White

- ▶ Accommodates a 2" x 2" post
- ▶ Profile height: 7/8"
- ▶ OD: 4 5/8" x 4 5/8"
- ▶ 100 each per case @ 22lbs

NW6263-SBL Mill

NW6263-BK Black

NW6263-BZ Bronze

NW6263-WH White

- ▶ Accommodates a 2 1/2" x 2 1/2" post
- ▶ Profile height: 7/8"
- ▶ OD: 5 1/8" x 5 1/8"
- ▶ 100 each per case @ 20lbs

Knuckles, O-Rings and Keyless Locks

Aluminum Industrial Double 'O' Ring

NEW!

NW6334-SBL Mill

NW6334-BK Black

NW6334-BZ Bronze (Special Order)

- Used with 1" Picket system
- 3.96" Outer Diameter
- 3.34" Inner Diameter
- 50 each per case @ 35lbs



Aluminum Decorative Single 'O' Ring

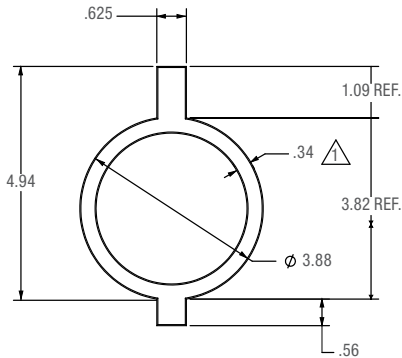
NW237A-MI Mill

- Used with 3/4" picket system
- 4" Outer Diameter
- 3 1/4" Inner Diameter
- 120 each per case @ 40lbs



Aluminum Decorative Single 'O' Ring Use with 5/8" Picket System (Special Order)

NW237MC Mill



Aluminum Decorative Double 'O' Ring

NW237DBL-MI Mill

NW237DBL-26 Black

NW237DBL-36 Bronze

- Used with 3/4" picket system
- Spacing between two rings is .770"
- 3 7/16" Outer Diameter
- 2 7/8" Inner Diameter
- 50 each per case @ 24lbs



3" Aluminum Ring

WI-RING-3

- 100 per case



3-7/8" Aluminum Ring

WI-RING-WD

- 100 per case



5/8" Aluminum Quad Ring

WI-4RING

- 45 per case @ 40lbs



Aluminum Decorative Scroll

NW241-SBL Mill (USS1) (Special Order)

- Used with 5/8" picket system
- Fits .600 Profile
- 3 5/8"(H) x 3 3/4"(W) x 5/8"(D)
- 160 each per case @ 42lbs

NW241J-SBL Mill

- Fits .625 Profile



NEW!

NW6326-SBL Mill

- Used with 3/4" picket system
- Fits .75 Profile
- 200 each per case @ 48lbs

Knuckles

NW6262-SBL Mill - Accommodates 3/4" Picket

NW6261-SBL Mill - Accommodates 1" Picket

- Aluminum die cast
- Standard part for welding
- Add hole for screw mount
- **NW6262:** 50 each per case @ 13lbs
- **NW6261:** 50 each per case @ 12lbs



Keyless Locks

- Mechanical Combination Locks - No electronics
- Passage function may be set for exiting without code
- Easy code change with any amount of numbers
- Dead locking spring latch
- Marine grade interior
- Slip clutch design - No damage to lock if handle is pushed down too hard
- Locks fit gate frames 1-3/8" to 2-3/8"
- Locks never need lubrication



KYPD-ADAPTER-BK

Two Sided Keypad

KYPD-2D-BK Black

KYPD-2D-SC Satin Chrome

1 Side Keypad & 1 Side Blank

KYPD-2B-BK Black

KYPD-2B-SC Satin Chrome



Lockboxes for KYPD

LOCKBOX2C Steel

LOCKBOX2C-AL Aluminum

- Screws included



One Sided

NW-285-P-SC Satin Chrome

- For use with **NW-PB1100-SC** Panic Bar



Lock Boxes, Gate Handles and Bumpers, Drop Rods

Mortise Lockset Box

NW214-MI Mill (WI-LB-S)

- ▶ Box is 3 3/8"(H) x 4 7/16"(W) x 2"(D)
- ▶ Welded into gate profile to accommodate traditional mortise lockset
- ▶ 50 each per case @ 29lbs



Double Hole Lock Box

WI-LB-D

- ▶ 35 each per case



Nylon Gate Bumper

NW6186-SD-BK Black

NW6186-SD-WH White

- ▶ Made with durable glass-filled nylon with UV inhibitors
- ▶ Flanges are each 2"(W) x 1.75"(D) for durable attachment
- ▶ Overall height is 4.5"
- ▶ Stainless steel screws included
- ▶ 50 each per case @ 22lbs

Prevents Damage!

Handle Bumper
Also Available



▶ Also available in quantities of 10

Nylon Gate Handles

NW314S-BK w/S.S. screws Black

NW314S-WH w/S.S. screws White

NW314-BK (WI-NGH) w/o screws Black

NW314-WH (WI-NGH-W) w/o screws White

- ▶ Made with durable glass-filled nylon with UV inhibitors
- ▶ Flanges are each 1.5"(W) x 1.25"(D) for durable attachment
- ▶ Overall height is 5" and handle is .75" deep
- ▶ Very comfortable and easy to grasp
- ▶ 50 each per case @ 8lbs



Stainless Steel Gate Handle

NW6184-BK Black

NW6184-WH White

- ▶ 2-Sided Attachment
- ▶ Modern Design
- ▶ Stainless steel screws included
- ▶ 100 each per case @ 35 lbs



Stainless Steel Gate Bumper

NW6237-BK

- ▶ Slim line Design
- ▶ 2-Sided Attachment
- ▶ Stainless Steel Screws included
- ▶ 50 each per case @ 7lbs



Heavy Duty Stainless Steel Drop Rod

24" NW38305-24SS Mill

NW38305-24SSB Black

NW38305-24SSW White

20 each per case @ 39lbs

36" NW38305-36SSB Black

NW38305-36SSW White (Special Order)

10 each per case @ 23lbs

48" NW38305-48SSB Black

NW38305-48SSW White (Special Order)

10 each per case @ 40lbs

- ▶ 5/8" diameter
- ▶ Screws included
- ▶ Dual guides
- ▶ Pad-lockable
- ▶ Retention-ears for theft prevention



Stainless Steel Key Locking Drop Rods

18" NW38305KL-18SSB Black

NW38305KL-18SSW White

10 each per case @ 21lbs

24" NW38305KL-24SSB Black

NW38305KL-24SSW White

10 each per case @ 23lbs

36" NW38305KL-36SSB Black

NW38305KL-36SSW White

10 each per case @ 36lbs

48" NW38305KL-48SSB Black

NW38305KL-48SSW White

10 each per case @ 45lbs

- ▶ Add the appeal of a key lock to your drop rod
- ▶ Anti-theft protection
- ▶ The handle & brackets are made of low-maintenance, glass filled nylon
- ▶ The rods are 300 series stainless steel
- ▶ Available with Black or White brackets
- ▶ 2-sided bracket attachment
- ▶ Stainless steel screws included

Designed with multiple "set" points for desired height when in the "up" position



All Lockable Drop Rods
Can Be Keyed Alike

Comfortable, easy
to use handle



Arbor Collar

NW6275-SBL

- ▶ 1.5"-2.5" Arbor Collar
- ▶ 50 each per case @ 42lbs



Drop Rods, Hydraulic Gate Closers and Cantilever Trolleys

Aluminum Drop Rods

NW38305A1-24BK

(colors are special order)

- ▶ Fits gates frames 1" or larger
- ▶ 24" height
- ▶ Rust resistant and cost effective
- ▶ Light to handle, easy to install
- ▶ Stainless steel screws included
- ▶ 20 each per case @ 23 lbs

Fits
NARROW
Gate Frames

Comes with a
holder for "up
position"



Commercial Drop Rods

24" NW6270-24BK Black

NW6270-24HDG Hot Dip Galvanized
10 each per case @ 46lbs

36" NW6270-36BK Black

NW6270-36HDG Hot Dip Galvanized
10 each per case @ 55lbs

48" NW6270-48BK Black

NW6270-48HDG Hot Dip Galvanized
5 each per case @ 36lbs

- ▶ Heavy duty 1" O.D. drop rod
- ▶ Zinc plated, powder coated steel
- ▶ Through bolt design
- ▶ Can be used on vinyl, wood, aluminum or steel gates



Commercial Pad Lockable Drop Rods

24" NW6270L-24BK Black

NW6270L-24HDG Hot Dip Galvanized
10 each per case @ 46lbs

36" NW6270L-36BK Black

NW6270L-36HDG Hot Dip Galvanized
10 each per case @ 55lbs

48" NW6270L-48BK Black

NW6270L-48HDG Hot Dip Galvanized
5 each per case @ 36lbs



Guide Rollers

NW6271-BK Black

NW6271-WH White

- ▶ Plastic roller
- ▶ Used for Vinyl and Ornamental gates.
- ▶ Zinc plated bracket for welding

- ▶ Bracket is 6.2" in height
- ▶ 15 each per case @ 38lbs



WI-RGR

- ▶ 3" Nylon Guide Roller
- ▶ No cover
- ▶ 40/Case



WI-RGR-C

- ▶ Cover for WI-RGR
- ▶ 200/Case



Guide Rollers

WI-RGR-BKT

- ▶ 3" Rubber Guide roller with bracket
- ▶ 36/Case



"V" Groove Track Wheels

ROLL2BV - 2"

ROLL3BV - 3"

- ▶ 25 each per case @ 44lbs

ROLL4BV - 4"

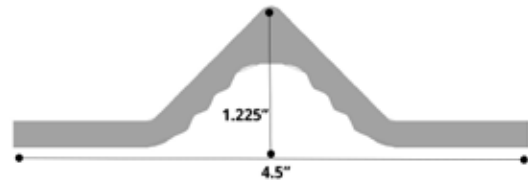
- ▶ "V" Groove, Zinc plated steel
- ▶ 16 each per case @ 50lbs
- ▶ Attached bracket included



V-Track

WI-EGT-016-10H

- ▶ Aluminum Extrusion
- ▶ 10' V-track with alternating holes every 18"
- ▶ Please contact customer service for bundle quantities



Hydraulic Gate Closers



GC2-BK Black

GC2-WH White

- ▶ Works with gates up to 125 lbs
- ▶ Works with gates widths up to 54"
- ▶ Adjustable closing speed and adjustable latching speed
- ▶ 90° hold open feature
- ▶ Maximum opening of 90°
- ▶ Powder coated steel
- ▶ 12 each per case @ 30 lbs

GC1-BK Black

- ▶ Works with gates up to 150 lbs
- ▶ Works with gates widths up to 54"
- ▶ Adjustable closing speed
- ▶ 90° hold open feature
- ▶ Powder coated steel
- ▶ 8 each per case @ 43 lbs



Other Colors Available

Hydraulic Gate Closers, Trolleys, Brackets and Goose Neck Pedestals

Shotgun® Gate Closer Patented

Controlled Closing Power to Avoid Gate Slamming

SHOTGUN-BK Black

SHOTGUN-SC Satin Chrome

- ▶ One SKU closes any gate up to 250 lbs*
- ▶ Anti-slam technology
- ▶ Adjustable closing speed
- ▶ No oil therefore no leaks
- ▶ 10 per case @67lbs



Double barrel
closing power

NEW!

*Tested on a 6' high, 6' wide. Needs a gate stop at 90 degrees

Trolley for Cantilever Gates

NW-TROLLEY4WA

- ▶ 4W: 6/Case @ 29lbs



NW-TROLLEY8WA

- ▶ 8W: 4Case @ 31lbs



4 Wheel Trolley

WI-TROLLEY-M4S

- ▶ Cast Steel body
- ▶ Horizontal Wheels O.D. 2.125"
- ▶ Vertical Wheels O.D. 2.045"
- ▶ 12/Case



8 Wheel Trolley

WI-WTS10-1

- ▶ Machined Steel body
- ▶ Horizontal Wheels O.D. 2.125"
- ▶ Vertical Wheels O.D. 2.045"
- ▶ 8/Case



WI-TROLLEY-8P

- ▶ Cast Aluminum
- ▶ 8/Case



Trolley Brackets

NW-TRLLBKT-R-HD

- ▶ 4" Round, Heavy Duty Gage
- ▶ 6/Case @ 45lbs



NW-TRLLBKT-S-HD

- ▶ 4" Square, Heavy Duty Gage
- ▶ 6/Case @ 45lbs



Trolley Brackets

NW-TRLLBKT-RD300-STL - 3"

NW-TRLLBKT-RD-STL (WI-HANG4R) - 4"

NW-TRLLBKT-RD658-STL - 6-5/8"

- ▶ Round, Heavy Duty Gage
- ▶ 4/Case @ 40lbs

NW-TRLLBKT-SQ300-STL - 3"

NW-TRLLBKT-SQ-STL - 4"

NW-TRLLBKT-SQ600-STL - 6"

- ▶ Square, Heavy Duty Gage
- ▶ 4/Case @ 40lbs



WI-HANG-4S - 4"

- ▶ Square
- ▶ 8/Case

WI-HANG-6S - 6"

- ▶ Square
- ▶ 4/Case

Goose Neck Pedestals

WI-ACA-1 42"

WI-ACA-2 48"

- ▶ Access Control Arm w/base
- ▶ Pad Mountable
- ▶ 1 piece per case @ 17lbs

WI-ACA-1-B 54"

WI-ACA-72-B 72"

- ▶ Direct Burial
- ▶ 1 piece per case @ 20lbs

WI-GNC-DUAL-72

- ▶ Dual Arm Pedestal
- ▶ 42" and 72" Pedestal
- ▶ 1 piece per case 42lbs.

WI-ACA-HD

- ▶ Heavy Duty Pedestal
- ▶ 1 piece per case





Phone: (813) 988-2628 • Fax (866) 988-3465
www.nationwideindustries.com • info@nationwideindustries.com



Zip-Latch®
Pool Gravity
Latch

Nautilus®
Self-Closing
Hinges

Cornerstone®
The Million Cycle
Self-Closing Nylon Hinges

Keystone®
Heavy Duty
Key-Lockable Latches

Keystone® X
eXternal Mount
Key-Lockable Latches

AquaLatch®
Magnetic Pool
Safety Latches

GateShare®
Multi-Lock
Latch

Keystone®
PanicLatch™
Self-Locking
PanicLatch™

Manta®
Magnetic
Nylon Latches

OrnaMAG®
Magnetic
Metal Latches

Trident™
Magnetic Gate
Safety Latches

ArmorLatch®
Magnetic
Latches

LockThru®
Wood Gate
Swing Latches

V-Notch™
Hinges
and Latches

Shotgun®
Gate
Closers

