

# Wood Fence Hardware

Hinges

Latches

Drop Rods

Handles

Accessories



**NATIONWIDE**  
**INDUSTRIES**





# NATIONWIDE INDUSTRIES

**WE EXPANDED  
COMBINING TWO GREAT COMPANIES  
TO BETTER SERVE YOUR  
HARDWARE NEEDS!**



**NEW  
LOCATION!**

**INNOVATIVE HARDWARE SOLUTIONS FOR FENCE AND RAILING PROFESSIONALS**



**WAREHOUSE IS NOW  
120,000 SQ FEET**



**14,000 SQ FEET  
OF OFFICE SPACE**



## About Nationwide Industries

We design and manufacture quality hardware and components for the building materials industry. We are the leading industry resource with over 2,000 SKUs comprised of steel, aluminum, stainless steel, glass-filled nylon, die castings, for simple components or high tech solutions. As an industry leader, we

provide the best possible balance of value, service and innovation. From our Ultra-Tec® cable railing to our unrivaled safety latches we have a solution for you. Please contact our Tampa based customer service department to discover what products you need for your next project.

**We are the leading industry resource with over 2,000 SKUs**

3505 Cragmont Dr, Tampa, FL 33619  
Phone: (813) 988-2628 • Fax (866) 988-3465  
[www.nationwideindustries.com](http://www.nationwideindustries.com) • [info@nationwideindustries.com](mailto:info@nationwideindustries.com)



## 8" Ornamental 'T' Hinge

**NW38937Q** (WI-OTH-8)

- ▶ Zinc plate steel with black finish
- ▶ 1 3/4" lag screws with black finish
- ▶ 20 pair per case @ 43 lbs

**NW38937FQ** with Fixed Pin

- ▶ Zinc plate steel with black finish
- ▶ 1 3/4" lag screws with black finish
- ▶ 20 pair per case @ 43 lbs

**NW38937AQ** (WI-OTH-8-UA)

Un-Assembled

- ▶ Zinc plate steel with black finish
- ▶ 1 3/4" lag screws with black finish
- ▶ 20 pair per case @ 43 lbs

**NW38937MDQ**

- ▶ Zinc plate steel with black finish
- ▶ 3" thru-bolts for gate side
- ▶ 3" lag screws for fence side
- ▶ 20 pair per case @ 44 lbs



Also Available in  
Hammered Bronze



## 8" Adjustable Self-Closing Contemporary 'T' Hinge

**NW6332**

- ▶ Zinc plate steel with black finish
- ▶ Easy tension adjustment
- ▶ Easy to hold adjustment pin
- ▶ 1-3/4" lag screws with black finish
- ▶ 20 pair per case @ 42 lbs

NEW!



## 10" Ornamental 'T' Hinge

**NW38933MDQ** (WI-OTH-10-CP) with Cotter-Pin

- ▶ Zinc plate steel with black finish
- ▶ 3" thru-bolts for gate side
- ▶ 3" lag screws for fence side
- ▶ 10 pair per case @ 44 lbs

**NW38933FMDQ** (WI-OTH-10-FP)  
with Fixed Pin

- ▶ Zinc plate steel with black finish
- ▶ 3" thru-bolts for gate side
- ▶ 3" lag screws for fence side
- ▶ 10 pair per case @ 44 lbs



## 12" Ornamental 'T' Hinge

**NW38935Q**

- ▶ Zinc plate steel with black finish
- ▶ 1 3/4" lag screws with black finish
- ▶ 10 pair per case @ 52 lbs

**NW38935MDQ** (WI-OTH-12-FP)

- ▶ Zinc plate steel with black finish
- ▶ 3" thru-bolts for gate side
- ▶ 3" lag screws for fence side
- ▶ 10 pair per case @ 52 lbs

## 8" Ornamental Heavy Duty Self-Closing 'T' Hinge

Massive  
Spring and  
Barrel



**NW38937HDQ**

More Closing Power

- ▶ Easy tension adjustment
- ▶ Easy to hold adjustment pin
- ▶ 20 pair per case @ 52 lbs

## 8" Contemporary 'T' Hinge

**NW38945Q** (WI-CTH-8)

- ▶ Zinc plate steel with black finish
- ▶ 1 3/4" lag screws with black finish
- ▶ 20 pair per case @ 54 lbs

**NW38945MDQ**

- ▶ Zinc plate steel with black finish
- ▶ 3" thru-bolts for gate side
- ▶ 3" lag screws for fence side
- ▶ 20 pair per case @ 54 lbs

**NW38945SS** (WI-CTH-8-M-SS)

- ▶ Same as NW38945Q but in stainless steel with mill finish



Also Available in  
Hammered Bronze



## 10" Contemporary 'T' Hinge

**NW38947Q** (WI-CTH-10)

- ▶ Zinc plate steel with black finish
- ▶ 1 3/4" lag screws with black finish
- ▶ 10 pair per case @ 32 lbs

**NW38947MDQ**

- ▶ Zinc plate steel with black finish
- ▶ 3" thru-bolts for gate side
- ▶ 3" lag screws for fence side
- ▶ 10 pair per case @ 32 lbs



## 8" Traditional 'T' Hinge

**NW38941Q** (WI-TTH-8)

- ▶ Zinc plate steel with black finish
- ▶ 1 3/4" lag screws with black finish
- ▶ 20 pair per case @ 56 lbs

## 10" Traditional 'T' Hinge

**WI-TTH-10**

- ▶ Zinc plate steel with black finish
- ▶ 1 3/4" lag screws with black finish
- ▶ 10 pair per case @ 41 lbs



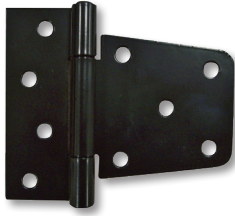


# Wood Fence Hinges

## Blunt 'T' Hinge

### NW6172-BK

- ▶ Zinc plate steel with black finish
- ▶ 1 3/4" lag screws for fence
- ▶ 1 3/4" lag screws for gate
- ▶ 20 pair per case @ 40 lbs



## 6" Universal 'T' Hinge

### NW36576/6-BQ (WI-THT-6BK)

- ▶ Zinc plate steel with black finish
- ▶ 2 1/2" lag screws for fence
- ▶ 1 3/4" lag screws for gate
- ▶ 20 pair per case @ 34 lbs

### NW36576/6-M

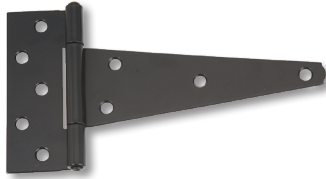
- ▶ Zinc plate steel finish
- ▶ 2 1/2" lag screws for fence
- ▶ 1 3/4" lag screws for gate
- ▶ 20 pair per case @ 34 lbs

### NW36576/6-71

- ▶ Zinc plate steel finish
- ▶ Bulk-packed without screws
- ▶ 50 each per case @ 43 lbs

### NW36576/6-ZPBB (WI-THT-6BK-BB) with Brass Bushing

- ▶ Zinc plate steel with black finish
- ▶ 2 1/2" lag screws for fence
- ▶ 1 3/4" lag screws for gate
- ▶ 20 pair per case @ 30 lbs



## 8" Universal 'T' Hinge

### NW199 (WI-THT-8BK)

- ▶ Zinc plate steel with black finish
- ▶ 2 1/2" lag screws for fence
- ▶ 1 3/4" lag screws for gate
- ▶ 20 pair per case @ 42 lbs

### NW199-76 (Special order only)

- ▶ Zinc plate steel finish
- ▶ 2 1/2" lag screws for fence
- ▶ 1 3/4" lag screws for gate
- ▶ 20 pair per case @ 42 lbs

### NW199-ZPBB (Special order only) with Brass Bushing

- ▶ Zinc plate steel with black finish
- ▶ 2 1/2" lag screws for fence
- ▶ 1 3/4" lag screws for gate
- ▶ 20 pair per case @ 43 lbs



## 8" Ornamental Screw Hook & Strap Hinge



### NW38934Q

- ▶ Zinc plate steel with black finish
- ▶ 1 3/4" lag screws with black finish
- ▶ 20 pair per case @ 40 lbs

## 8" Ornamental Double Strap Hinge



### NW38936Q (WI-ODSH-8)

- ▶ Zinc plate steel with black finish
- ▶ 1 3/4" lag screws with black finish
- ▶ 20 pair per case @ 52 lbs

## 8" Ornamental Half Strap Hinge



### NW38938Q (WI-O-1/2SH-8)

- ▶ Zinc plate steel with black finish
- ▶ 1 3/4" lag screws with black finish
- ▶ 20 pair per case @ 41 lbs

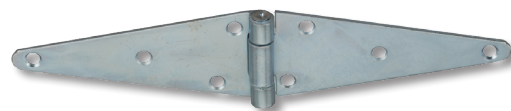
### NW38938FQ with Fixed Pin

- ▶ Zinc plate steel with black finish
- ▶ 1 3/4" lag screws with black finish
- ▶ 20 pair per case @ 41 lbs

### NW38938A Un-Assembled

- ▶ Zinc plate steel with black finish
- ▶ 1 3/4" lag screws with black finish
- ▶ 20 pair per case @ 40 lbs

## 6" Universal Double Strap Hinge



### NW36579/6-M

- ▶ Zinc plate steel finish
- ▶ 2 1/2" lag screws for fence
- ▶ 1 3/4" lag screws for gate
- ▶ 20 pair per case @ 35 lbs



## 8" Contemporary Double Strap Hinge



**NW38944Q** (WI-CDSH-8)

- ▶ Zinc plate steel with black finish
- ▶ 1 3/4" lag screws with black finish
- ▶ 20 pair per case @ 61 lbs



Also Available in  
Hammered Bronze

**NW38944SS** (WI-CDSH-8-M-SS)

- ▶ Same as NW38944Q but in stainless steel with mill finish

## 10" Contemporary Double Strap Hinge

**NW38942Q** (WI-CDSH-10)

- ▶ Zinc plate steel with black finish
- ▶ 1 3/4" lag screws with black finish
- ▶ 10 pair per case @ 35 lbs

## 8" Traditional Double Strap Hinge



**NW38940Q** (WI-TDSH-8)

- ▶ Zinc plate steel with black finish
- ▶ 1 3/4" lag screws with black finish
- ▶ 20 pair per case @ 54 lbs

## 10" Traditional Double Strap Hinge

**NW38946Q** (WI-TDSH-10)

- ▶ Zinc plate steel with black finish
- ▶ 1 3/4" lag screws with black finish
- ▶ 10 pair per case @ 37 lbs

## 8" Contemporary Butterfly Hinge



**NW38943Q** (WI-CBH-8)

- ▶ Zinc plate steel with black finish
- ▶ 1 3/4" lag screws with black finish
- ▶ 20 pair per case @ 54 lbs

## 8" Traditional Butterfly Hinge



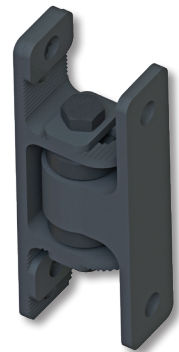
**NW38943T**

- ▶ Zinc plate steel with black finish
- ▶ 1 3/4" lag screws with black finish
- ▶ 20 pair per case @ 54 lbs

## Heavy Duty Sealed Bearing Hinges

### Great Options for Commercial Gates!

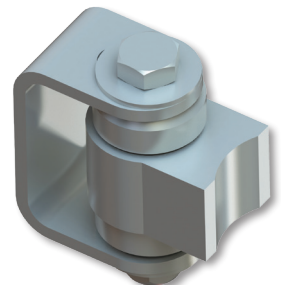
- ▶ Assembled in the USA
- ▶ Never needs lubrication
- ▶ Horizontal adjustability



Black Aluminum Bolt-on  
shown above

### Full Catalog Available with Details

28 SKUs  
Available!



Mill Steel Weld-on  
shown above

### Options Per Each Hinge Side

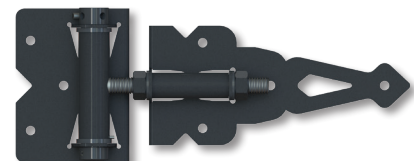
- ▶ Steel or Aluminum
- ▶ Bolt-on or Weld-on application
- ▶ Black or Mill finish

## "T" Hinge

**NWSS-HDT-SC-BK** Black w/stainless steel screws

**NWSS-HDT-SC-BKD** Black w/stainless steel self-drilling screws

- ▶ Stainless steel, powder coated
- ▶ Easy tension adjustment
- ▶ Allen wrench included
- ▶ Larger easy to hold pin
- ▶ 12 pairs per case @ 40 lbs



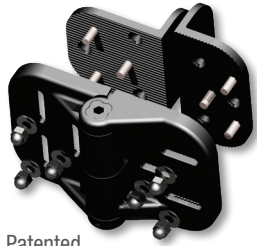


# CornerStone® Self-Closing Nylon Hinges

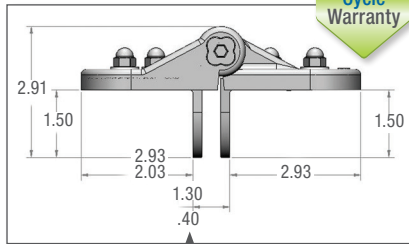
## CornerStone® Series Self-Closing Nylon Hinges

Produced with durable glass-filled nylon  
1/4" Allen wrench included for tension adjustment

### CornerStone® Fully Adjustable Hinge



Patented



Double dimensions indicate range of adjustability

**CH300F-BK** Black w/stainless steel self-threading screws included  
**CH300F-WH** White w/stainless steel self-threading screws included  
**CH300F-SD-BK** Black w/stainless steel self-drilling screws included  
**CH300F-SD-WH** White w/stainless steel self-drilling screws included

- ▶ Both flanges: 4.25"(H) x 2.88"(W) x 1.50"(D)
- ▶ Back plates allow horizontal and vertical adjustability
- ▶ 20 pair per case @ 42 lbs

Point-Load  
Tested to  
1500 lbs  
per pair!

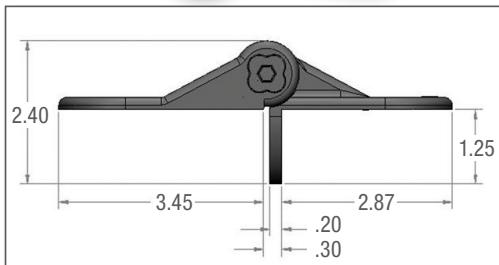
### CornerStone® Horizontally Adjustable Hinge



1  
MILLION  
Cycle  
Warranty

Point-Load  
Tested to  
1200 lbs  
per pair!

Patented



**CH300H-BK** Black w/stainless steel self-threading screws included  
**CH300H-WH** White w/stainless steel self-threading screws included  
**CH300H-SD-BK** Black w/stainless steel self-drilling screws included  
**CH300H-SD-WH** White w/stainless steel self-drilling screws included

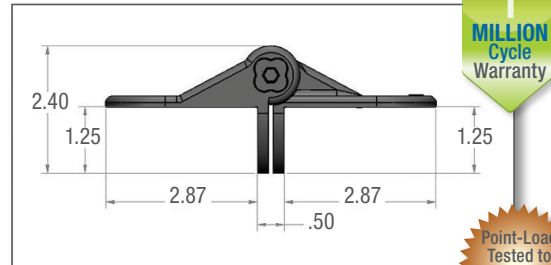
- ▶ Both flanges: 4.25"(H) x 2.88"(W) x 1.25"(D)
- ▶ 20 pair per case @ 24 lbs

Slotted, serrated holes for horizontal holding power

## CornerStone® Fixed Position 4" Hinge



1  
MILLION  
Cycle  
Warranty



Point-Load  
Tested to  
950 lbs  
per pair!

Patented

**CH300N-BK** Black

**CH300N-WH** White

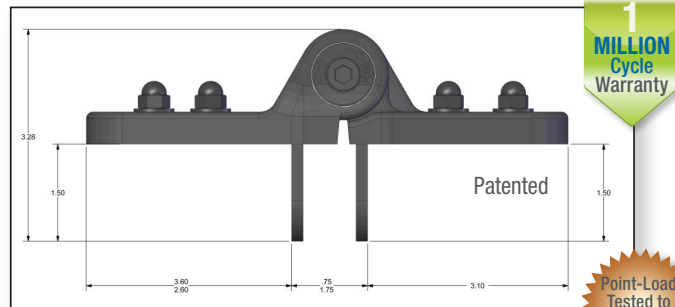
- ▶ Both flanges: 4.25"(H) x 2.88"(D) x 1.25"(D)
- ▶ Stainless steel screws included
- ▶ 20 pair per case @ 31 lbs

## CornerStone® 2 Fully Adjustable Hinge



- ▶ Horizontally adjustable up to 1.0"
- ▶ Vertically adjustable up to 1.0"
- ▶ Fits both right and left-hand applications
- ▶ 10 pair per case @ 30 lbs

1  
MILLION  
Cycle  
Warranty



Point-Load  
Tested to  
2000 lbs  
per pair!

**C2H300F-BK** Black w/stainless steel screws

**C2H300F-WH** White w/stainless steel screws (Special order)

**C2H300F-SD-BK** Black w/stainless steel self-drilling screws

**C2H300F-SD-WH** White w/ stainless steel self-drilling screws (Special Order)



# Screw Hook & Eye Hinges



## 6" Heavy Duty Strap with 1/2" Screw Hook

**NW284-76**

- ▶ Zinc plate steel finish
- ▶ 12 pair per case @ 21 lbs



## 8" Heavy Duty Strap with 5/8" Screw Hook

**WI-HDSH-5/8**

- ▶ Zinc plate steel with black finish
- ▶ 1 3/4" lag screws with black finish
- ▶ 20 pair per case @ 30 lbs



## 12" Heavy Duty Strap with 5/8" Screw Hook

**NW255/38931-26 (WI-HD-STRAP-12)**    **NW255/38931-GV**

- ▶ Zinc plate steel with black finish
- ▶ 1 3/4" lag screws with black finish
- ▶ 12 pair per case @ 42 lbs
- ▶ HDG finish
- ▶ 1 3/4" lag screws with HDG finish
- ▶ 12 pair per case @ 42 lbs

**NW255-71**

- ▶ Zinc plate steel finish
- ▶ Without screws – bulk packed
- ▶ 50 each per case @ 42 lbs



## 1/2" X 4" Screw Hook & Eye Hinge

**NW38603 (WI-SHIH-1/2x4)**

- ▶ Zinc plate steel finish
- ▶ 50 pair per case @ 56 lbs

**NW38603-BK (WI-SHIH-1/2x4-B)**

- ▶ Black finish
- ▶ 50 pair per case @ 56 lbs

**NW38603-GV (WI-SHIH-1/2x4-G)**

- ▶ HDG finish
- ▶ 50 pair per case @ 56 lbs



## 5/8" X 5" Screw Hook & Eye Hinge

**NW38931**

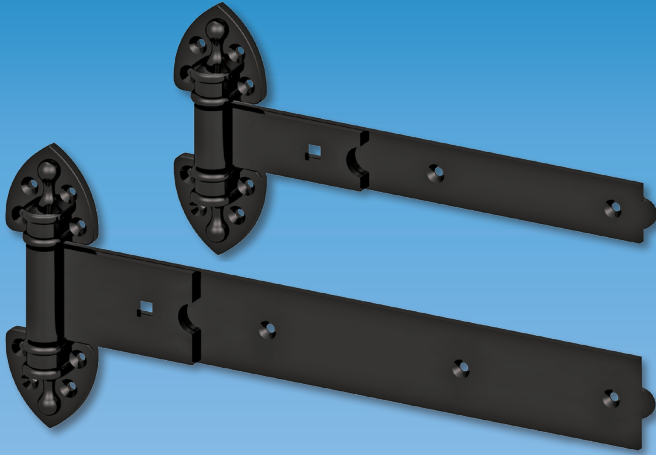
- ▶ Zinc plate steel finish
- ▶ 20 pair per case @ 56 lbs



# Wood Fence Rustic Series and Hammered Bronze

## Nationwide Industries Rustic Series

### 12", 16", 20" and 24" Hinges



#### RUSH112-BK

- ▶ 12" pair of black hinges
- ▶ 1/2" pin
- ▶ Powder coated finish
- ▶ 10 pair per case @ 59 lbs

#### RUSH116-BK

- ▶ 16" pair of black hinges
- ▶ 1/2" pin
- ▶ Powder coated finish
- ▶ 8 pair per case @ 50 lbs

#### RUSH220-BK

- ▶ 20" pair of black hinges
- ▶ 5/8" pin
- ▶ Powder coated finish
- ▶ 6 pair per case @ 55 lbs

#### RUSH224-BK

- ▶ 24" pair of black hinges
- ▶ 5/8" pin
- ▶ Powder coated finish
- ▶ 4 pair per case @ 45 lbs

\* All hinges include stainless steel screws and a **carriage bolt** with painted head

### Twisted Ring Latch



#### RUSL1-BK

- ▶ Operates from either side
- ▶ Fits gates up to 5" thick
- ▶ Powder coated finish
- ▶ 10 per case @ 20 lbs

### Hinges:

#### NW38937Q-HBZ

- ▶ See NW38937Q on page 2

#### NW38945Q-HBZ (WI-CTH-8-HB)

- ▶ See NW38945Q on page 2

#### NW38944Q-HBZ (WI-CDSH-8-HB)

- ▶ See NW38944Q on page 4

### Latches:

#### NW38308Q-HBZ (WI-SPL-HB)

- ▶ See NW38308Q on page 9

#### NW38310Q-HBZ (WI-CPL-HB)

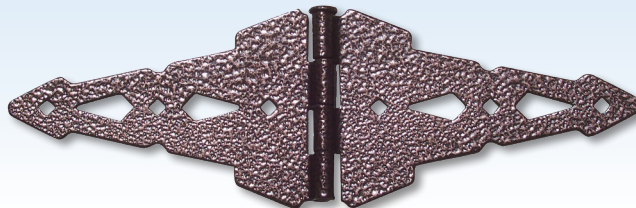
- ▶ See NW38310Q on page 9

#### NW38307-HBZ

- ▶ See NW38307 on page 9

## Hammered Bronze Hinges, Latches, Kits, Drop Rods and Handles

Improve the look and value of your whole fence  
by upgrading the finish on your hardware!



- ▶ All hardware is zinc plate steel with hammered bronze finish
- ▶ For specs and photo of hardware shown in black, please view referenced page numbers

Look for the star to quickly identify the Hammered Bronze hardware.



Also Available in Hammered Bronze

### Kits:

#### WI-CWGK-HB (NW38948CQ-HBZ)

- ▶ See WI-CWGK on page 13

#### NW38949CQ-HBZ

- ▶ See WI-MBDDK on page 13

#### WI-WWGK-HB (NW38948WQ-HBZ)

- ▶ See WI-WWGK on page 13

#### NW38949W24-HBZ

- ▶ See NW38949W24 on page 13

### Drop Rods:

#### NW38305-24Q-HBZ

- ▶ See NW38305-24Q on page 14

### Handles:

#### NW38398Q-HBZ

- ▶ See NW38398Q on page 17

## Standard Gravity Latch

**NW38204Q** (WI-GL-B) Black

**NW38204BZ** (WI-GL-BZ) Bronze

**NW38204W** (WI-GL-W) White

- ▶ Zinc plate steel
- ▶ Screws included
- ▶ .38" Strike bar with ball tip
- ▶ Pad-lockable
- ▶ 50 each per case @ 27 lbs



**NW38204-76Q** (WI-GL-Z/P)

- ▶ Zinc plate steel finish
- ▶ Screws with zinc plate finish
- ▶ .38" Strike bar with ball tip
- ▶ Pad-lockable
- ▶ 50 each per case @ 27 lbs

**NW38204SSM**

- ▶ Same as NW38204Q but in stainless steel with mill finish

**NW38204NC-76**

**with Cable**

- ▶ Zinc plate steel finish
- ▶ Screws with zinc plate finish
- ▶ With 13" cable, clip and o-ring for access on opposite side of fence
- ▶ .38" Strike bar with ball tip
- ▶ Pad-lockable
- ▶ 50 each per case @ 27 lbs

## Standard Gravity Latch with Floating Bar



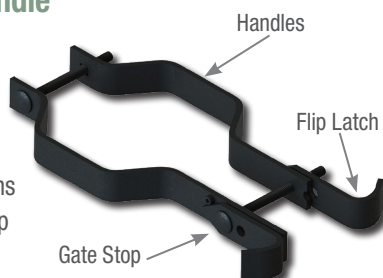
**NW38203Q** (WI-GLFB)

- ▶ Zinc plate steel with black finish
- ▶ Screws with black finish
- ▶ .38" Strike Bar with ball tip
- ▶ Pad-lockable
- ▶ 50 each per case @ 27 lbs

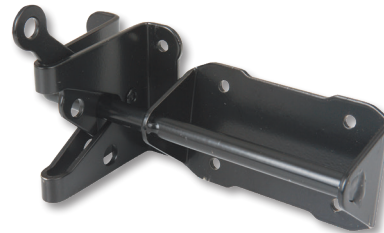
## Fork Latch Kit with Handle

**NW6185-BK** (WI-WGFL)

- ▶ Zinc plate steel with black finish
- ▶ Simple to use latch
- ▶ Avoids most sagging problems
- ▶ Built-in handles and gate stop
- ▶ 20 each per case @ 44 lbs



## Heavy Duty Gravity Latch



**NW38338/R** (WI-GL-HD)

- ▶ Zinc plate steel with black finish
- ▶ Screws with black finish
- ▶ .48" Strike bar with 90° bend
- ▶ Pad-lockable
- ▶ 20 each per case @ 28 lbs

**NW38338A/R-26** (WI-GL-HDC) Black

**NW38338/R-ZP** (WI-GL-HDLZ) Mill

**with Cable**

- ▶ Zinc plate steel
- ▶ Screws included
- ▶ With 13" cable, clip and o-ring for access on opposite side of fence
- ▶ .48" Strike bar with 90° bend
- ▶ Pad-lockable
- ▶ 20 each per case @ 30 lbs

## Heavy Duty Gravity Latch with Floating Bar



**NW38340Q**

- ▶ Zinc plate steel black finish
- ▶ Screws with black finish
- ▶ .48" Strike bar
- ▶ Pad-lockable
- ▶ 25 each per case @ 42 lbs

**NW38340-M**

- ▶ Same as NW38340Q but with zinc plate steel finish

**NW38340-CABLE**

**with Stainless Pull Cable**

- ▶ Zinc plate steel black finish
- ▶ Screws with zinc plate finish
- ▶ .48" Strike bar
- ▶ Pad-lockable
- ▶ 25 each per case @ 42 lbs



# Wood Fence Latches

## 90° Strike Gravity Latch



### NW38204AQ (WI-GLO)

- ▶ Zinc plate steel with black finish
- ▶ Screws with black finish
- ▶ .38" Strike bar with 90° bend and ball tip
- ▶ Pad-lockable
- ▶ 50 each per case @ 28 lbs

## Standard Post Latch

### NW38308Q (WI-SPL)

- ▶ Zinc plate steel with black finish
- ▶ Screws with black finish
- ▶ Spring activated release lever
- ▶ Two-sided entry
- ▶ Reversible (right or left handed)
- ▶ Pad-lockable on one side only
- ▶ 20 each per case @ 33 lbs



Also Available in  
Hammered Bronze

### NW38308Q/38398Q (WI-SPLK)

- ▶ NW38308Q with a 9" standard gate handle
- ▶ 20 each per case @ 40 lbs

### NW38308SS (WI-SPL-M-SS)

- ▶ Same as NW38308Q but in stainless steel with mill finish

### NW38308NUA-Q

- ▶ Zinc plate steel with black finish
- ▶ Screws with black finish
- ▶ Spring activated release lever
- ▶ Two-sided entry
- ▶ Reversible (right or left handed)
- ▶ **Pad-lockable on two sides**
- ▶ **Bent handle design**
- ▶ 20 each per case @ 33 lbs



## Steel Contemporary Gate Latch

### NW38310QS

- ▶ Zinc plate steel with black finish
- ▶ Screws with black finish
- ▶ Strike flange: 3.12"(W) x 3.5"(H) x 1.38"(D)
- ▶ Latch flange: 1.88"(W) x 5.5"(H) x 1.5"(D)
- ▶ Mounts around corner of post and gate frame
- ▶ **Pad-lockable on both sides** – Locking slide switch on latch arm
- ▶ Allows entry from both sides
- ▶ Reversible mounting (right or left handed)
- ▶ **Easy Opening STOP Design!**
- ▶ 20 each per case @ 44 lbs

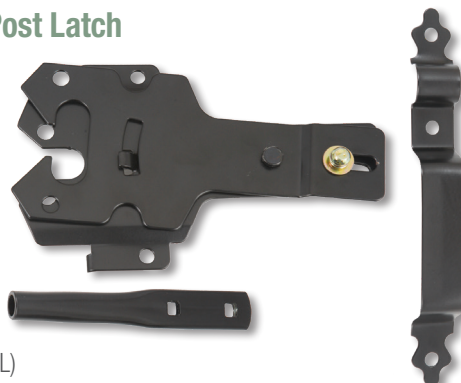


**NEW!**  
Stop added for  
easier use

## Contemporary Post Latch

### NW38310WQ

- ▶ Larger opening allows for more play of strike bar



### NW38310Q (WI-CPL)

- ▶ Zinc plate steel with black finish
- ▶ Screws with black finish
- ▶ 9" Gate handle
- ▶ Slide-switch lock on opposite side
- ▶ Pad-lockable on both sides
- ▶ 20 each per case @ 43 lbs

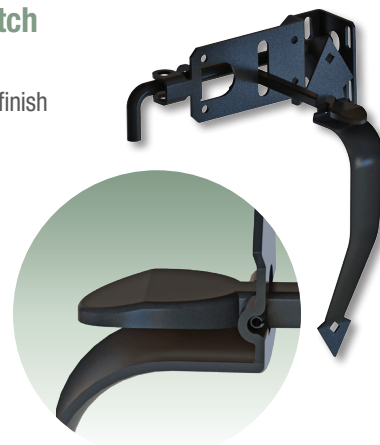


Also Available in  
Hammered Bronze

## Round Bar Thumb Latch

### NW283-26

- ▶ Zinc plate steel with black finish
- ▶ Screws with black finish
- ▶ 9" Gate handle
- ▶ Round locking lever bar
- ▶ Pad-lockable
- ▶ 25 each per case @ 38 lbs



**Improved and designed  
to avoid falling out!**

## Ornamental Thumb Latch Kit

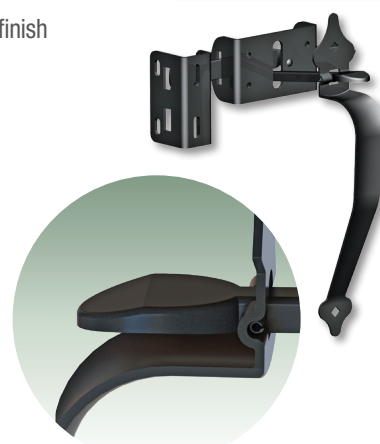
### NW38307 - 6" Lever

### NW38306A - 7" Lever

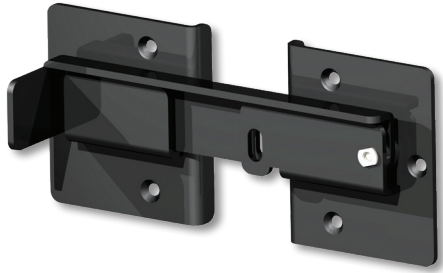
- ▶ Zinc plate steel with black finish
- ▶ Screws with black finish
- ▶ 9" Gate handle
- ▶ Locking lever bar is 'flat'
- ▶ 25 each per case @ 37 lbs



Also Available in  
Hammered Bronze



**Improved and designed  
to avoid falling out!**



## Flip Latch

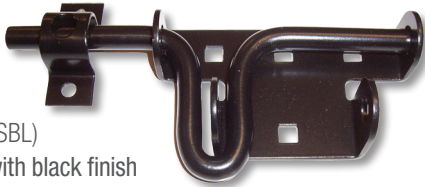
### NW6169-BK

- ▶ Commercial grade
- ▶ Great for dumpster use
- ▶ Pad-lockable
- ▶ Zinc plate steel with black powder coated finish
- ▶ Stainless steel through-bolt hardware included
- ▶ 10 each per case @ 37 lbs

### WI-DGFL

- ▶ Teflon Coated
- ▶ Pad-lockable
- ▶ 12 each per case @ 56 lbs

## Slide-Bar Latch



### NW38339Q (WI-SBL)

- ▶ Zinc plate steel with black finish
- ▶ Screws with black finish
- ▶ 3" Throughbolts for latch
- ▶ 1" Screws for keeper
- ▶ Pad-lockable
- ▶ 60 each per case @ 42 lbs

## Round Rail Loop Latch

### NW38301Q (WI-LLRR-1)

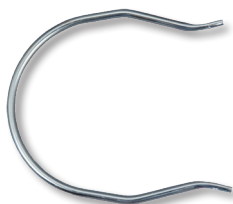
- ▶ Zinc plate steel finish
- ▶ Screws with HDG finish
- ▶ 60 each case @ 43 lbs



## Split Rail Loop Latch

### NW38302Q (WI-LLSR-2)

- ▶ Zinc plate steel finish
- ▶ Screws with HDG finish
- ▶ 60 each per case @ 43 lbs



## All-Purpose Latch Kit



### NW38341-26 (WI-APLK-BK)

- ▶ Zinc plate steel with black finish
- ▶ Screws with black finish
- ▶ 20 each per case @ 36 lbs

### NW38341-GV (WI-APLK-HDG)

- ▶ HDG finish
- ▶ Screws with HDG finish
- ▶ 20 each per case @ 36 lbs

\* All kits contain gravity latch with cable



### NW-S-LATCH-ZP

- ▶ Zinc plate steel finish
- ▶ Screws with zinc plate finish
- ▶ 20 each per case @ 36 lbs

Contains same "U" shape striker bar, "U" shape staple and handle as the All Purpose Latch above. Does not include the gravity latch with cable but instead includes a flat stake keeper.

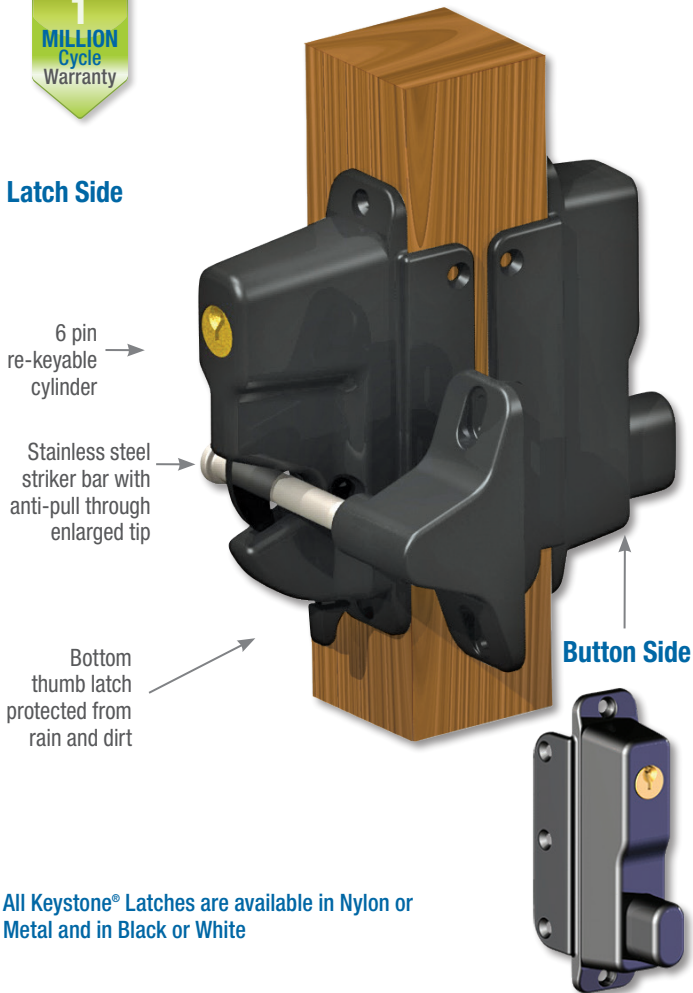


# Wood Fence Latches

## Keystone® Series - Patented Heavy Duty Design with Weather Resistant Glass-Filled Nylon Construction



### Latch Side



All Keystone® Latches are available in Nylon or Metal and in Black or White

### Two-Sided Lockable Latch

#### KLADV-P2-BK Black (Nylon)

- ▶ Locking feature accessible from both sides
- ▶ Reversible for right-hand or left-hand use
- ▶ Glass-filled nylon housing
- ▶ Thumb release button on one side, gravity latch lever on opposite side
- ▶ Stainless steel screws included
- ▶ 20 each per case @ 23 lbs

#### KLADV-M2-BK Black (Zinc diecast)

- ▶ Same as KLADV-P2 but with zinc die cast housing
- ▶ 20 each per case @ 48 lbs

Heavy Duty Striker Design on every Keystone® Latch

All Keystone® 2-Sided Latches are packed with a durable Plastic Marking Template for installation.



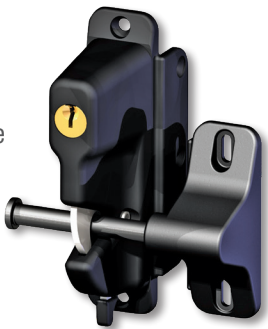
### One-Sided Lockable Latch

#### KLADV-P1-BK Black

- ▶ Same as KLADV-P2 above but with locking (gravity latch lever) on one side
- ▶ 20 each per case @ 17 lbs

#### KLADV-M1-BK Black (Zinc diecast)

- ▶ 20 each per case @ 31 lbs



## MAGNETIC Latch

- ▶ Self-latching and key-lockable
- ▶ Glass-filled nylon material for low maintenance, strength and durability
- ▶ Locks & unlocks from either side
- ▶ Reversible for left or right hand use without changing components

Number	Qty/Case	Weight
MANTA-L-BK	12	21 lbs
MANTA-L-WH	12	21 lbs



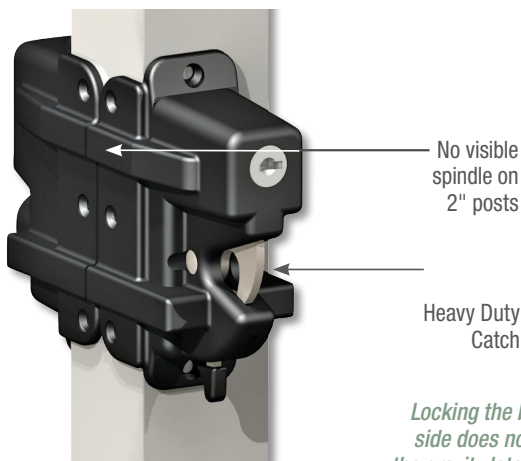
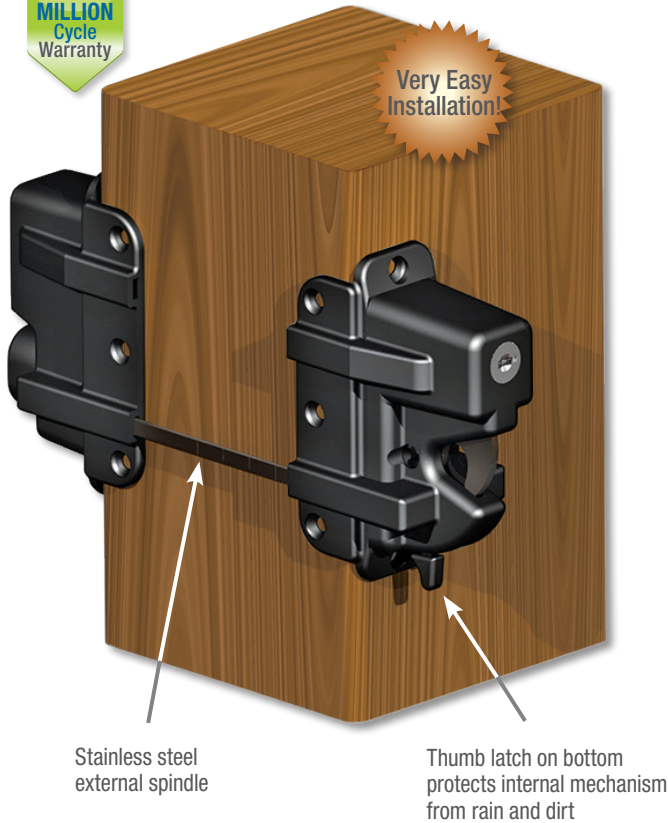
## The Keystone® X-eXternal Mount Latch

Best Stainless Steel External Spindle  
Design in the Industry - Patented



No need to drill spindle holes!

Very Easy Installation!



*Locking the button side does not lock the gravity latch side*

### Two-Sided

**KLX-P2-BK Black (Nylon)**

- ▶ Marked in 1/2" increments for quick, easy and accurate fitting to post sizes 2" - 5"

- ▶ Flat design safely encloses spindle ends
- ▶ 20 each per case @ 22 lbs

### One-Sided

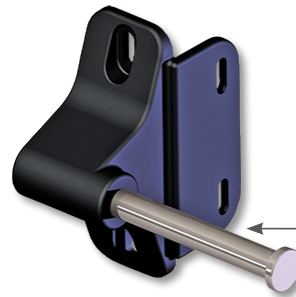
**KLX-P1-BK Black (Nylon)**

- ▶ Features Latch only
- ▶ 20 each per case @ 15 lbs

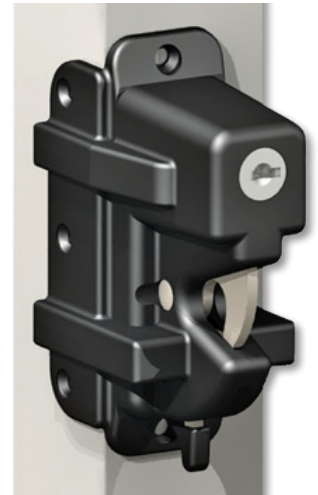
### For Thicker Posts

**KLX-Spindle-10**

- ▶ Longer spindle for gate posts over 5" thick



Heavy Duty Striker Design on every Keystone® Latch



**KLX2-P2-BK Black**

- ▶ **Slimline design**
- ▶ 20 each per case @ 20 lbs

**KLX2-P1-BK Black**

- ▶ Features Latch only
- ▶ 20 each per case @ 13 lbs



### NEW! Keystone® PanicLatch™ Patented



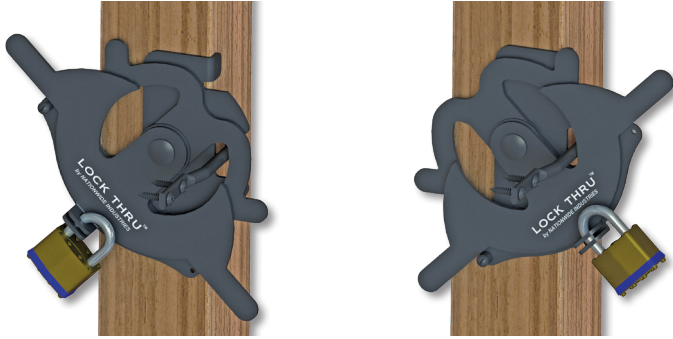
**KPL-P2-BK Black**

- ▶ Self-Locking anti-tamper design
- ▶ Easy exit with large button
- ▶ Secure Entry with 6 pin key
- ▶ 6 each per case @ 20 lbs



# Wood Fence Latches and Gate Kits

## Lock Thru™ Latch



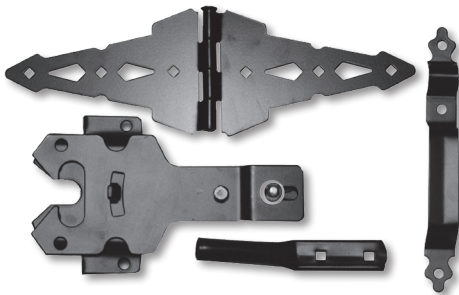
### LT1-BK

- ▶ Open the padlock from either side of the gate
- ▶ Simple to lock or unlock as the latch rotates to you
- ▶ Zinc-plated steel & powder coated
- ▶ Mounting hardware included (padlock not included)
- ▶ Compatible with left or right hand gates
- ▶ 20 each per case @ 24 lbs

\* Patent pending

Avoid  
Walk  
Arounds!

## Contemporary Walk Gate Kit



### WI-CWGK (NW38948CQ)

- ▶ Zinc plate steel with black finish
- ▶ Screws with black finish
- ▶ Includes: pair of 8" double strap hinges, post latch and 9" handle
- ▶ 10 kits per case @ 53 lbs

### WI-CWGK-T (NW38948CTQ)

- ▶ Zinc plate steel with black finish
- ▶ Screws with black finish
- ▶ Includes: pair of 8" T-hinge, post latch and 9" handle
- ▶ 10 kits per case @ 50 lbs

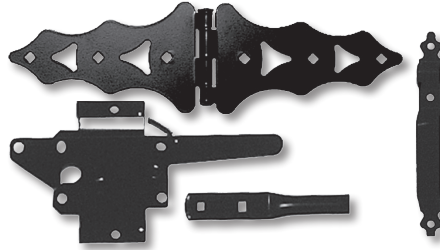
## Contemporary Drive Gate Kit

### WI-MBDDK (NW38949CQ)

- ▶ Same as NW38948CQ kit with an additional 24" drop rod and pair of hinges (includes 2 pair of hinges)
- ▶ 6 kits per case @ 63 lbs

Also Available in  
Hammered Bronze

## Traditional Walk Gate Kit



### WI-TWGK (NW38948Q)

- ▶ Zinc plate steel with black finish
- ▶ Screws with black finish

- ▶ Includes: pair of 8" double strap hinges, post latch with return spring and 9" handle
- ▶ 10 kits per case @ 47 lbs

### WI-WWGK-T (NW38948TQ)

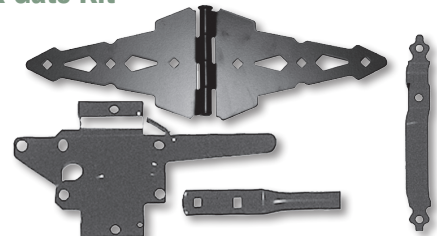
- ▶ Zinc plate steel with black finish
- ▶ Screws with black finish
- ▶ Includes: pair of 8" T-hinge, post latch with return spring and 9" handle
- ▶ 10 kits per case @ 48 lbs

## Traditional Drive Gate Kit

### NW38949Q

- ▶ Same as NW38948Q kit with an additional 24" drop rod and pair of hinges (includes 2 pair of hinges)
- ▶ 6 kits per case @ 58 lbs

## Western Walk Gate Kit



### WI-WWGK (NW38948WQ)

- ▶ Zinc plate steel with black finish
- ▶ Screws with black finish
- ▶ Includes: pair of 8" double strap hinges, post latch with return spring and 9" handle
- ▶ 10 kits per case @ 51 lbs

Also Available in  
Hammered Bronze

### WI-BTWGK (NW38948WTQ)

- ▶ Zinc plate steel with black finish
- ▶ Screws with black finish
- ▶ Includes: pair of 8" T-hinge, post latch with return spring and 9" handle
- ▶ 10 kits per case @ 44 lbs

### WI-WWGK-3H (NW38948WQ-3H)

- ▶ Same as above but with 3 hinges.

## Western Drive Gate Kit

### NW38949W24

- ▶ Same as NW38948WQ kit with an additional 24" drop rod and pair of hinges (includes 2 pair of hinges)
- ▶ 6 kits per case @ 62 lbs

Also Available in  
Hammered Bronze



# Wood Gate Drop Rods, Gate Wheels and Caps

## Drop Rods

### Heavy Duty Drop Rods

- 18" NW38305-18Q** (WI-DR-18) - Zinc plate steel Black finish  
20 each per case @ 36 lbs
- NW38305-18/ZP** - Zinc plate steel- unpainted  
20 each per case @ 36 lbs
- 24" NW38305-24Q** (WI-DR-24) - Zinc plate steel Black finish  
20 each per case @ 44 lbs
- NW38305/24-76Q** (WI-DR-24Z) - Zinc plate steel unpainted 20 each per case @ 44 lbs
- NW38305-24SS** - Stainless steel - unpainted  
20 each per case @ 44 lbs
- NW38305-24SSB** - Stainless steel with Black finish  
20 each per case @ 44 lbs
- NW38305-24SSW** - Stainless steel with White finish  
20 each per case @ 44 lbs
- 36" NW38305-36Q** (WI-DR-36) - Zinc plate steel Black finish  
20 each per case @ 64 lbs
- 48" NW38305-48Q** (WI-DR-48) - Zinc plate steel Black finish  
10 each per case @ 41 lbs

- ▶ 5/8" diameter
- ▶ Screws included
- ▶ Dual guides
- ▶ **Pad-lockable**
- ▶ Retention-ears for theft prevention



24" Available in Hammered Bronze



### Drop Rods with Holder

- NW38305H-24Q**  
**NW38305H-36Q**  
**NW38305H-48Q**

- ▶ No locking nibs
- ▶ Includes holder for "up" position

holder

### Commercial Drop Rods

- 24" NW6270-24BK** Black  
**NW6270-24HDG** Hot Dip Galvanized  
10 each per case @ 46 lbs
- 36" NW6270-36BK** Black  
**NW6270-36HDG** Hot Dip Galvanized  
10 each per case @ 55 lbs
- 48" NW6270-48BK** Black  
**NW6270-48HDG** Hot Dip Galvanized  
5 each per case @ 36 lbs

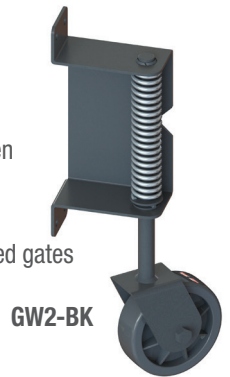
- ▶ Heavy duty 1" O.D. drop rod
- ▶ Zinc plated, powder coated steel
- ▶ Through bolt design
- ▶ Can be used on vinyl, wood, aluminum or steel gates



## Gate Wheels

### GW2-BK Black (For Wood Gates)

- ▶ Zinc plated steel with powder-coated finish
- ▶ Composite wheel designed for rougher uneven surfaces and large temperature ranges
- ▶ Swivel design for ease of use
- ▶ Easily reversible for use on left or right-handed gates
- ▶ Nationwide's V-notch™ styling
- ▶ May be installed on any flat surface
- ▶ Lag screws included
- ▶ 10 each per case @ 38 lbs



GW2-BK

## Copper Plated Stainless Steel Cap

A durable alternative that combines stainless steel with the look of copper.

### NW6180-44-CP (Special Order)

- ▶ Fits a 4 x 4 post measuring 3 1/2" square
- ▶ Glues on to post
- ▶ 50 per case @ 6 lbs

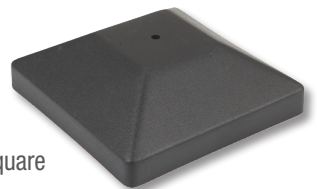


## Plastic Caps

### 4" Wood Post Plastic Cap

#### NW287-21 (WI-WPC-4)

- ▶ Fits a 4 x 4 post measuring 3 5/8" square
- ▶ 500 each per case @ 37 lbs



### 6" Wood Post Plastic Cap

#### NW298-21 (WI-WPC-6)

- ▶ Fits a 6 x 6 post measuring 5 3/4" square
- ▶ 200 each per case @ 35 lbs
- ▶ Made of durable HDPE plastic in black
- ▶ Logo option available (minimum quantity required)
- ▶ Also available without top hole (minimum quantity required)
- ▶ Made of durable HDPE plastic in black

## Commercial Pad Lockable Drop Rods

- 24" NW6270L-24BK** Black  
**NW6270L-24HDG** Hot Dip Galvanized  
10 each per case @ 46 lbs

- 36" NW6270L-36BK** Black  
**NW6270L-36HDG** Hot Dip Galvanized  
10 each per case @ 55 lbs

- 48" NW6270L-48BK** Black  
**NW6270L-48HDG** Hot Dip Galvanized  
5 each per case @ 36 lbs



# Premium Caps for Wood Posts

## Miter-less Wood Caps

These slip-over, Miter-less wood caps are made from a single solid block of mahogany wood. Eliminating the miter joints has solved the age old problem of post caps splitting at the corners. By making the cap out of one solid piece of wood, it has eliminated the need for any glue or staples to hold the cap together.

Made From  
High Quality  
MAHOGANY  
Wood

## Traditional

### WPC-312-TRD

- › Fits a standard 4 x 4 post measuring 3 1/2" square
- › 54 per case @ 35 lbs

### WPC-334-TRD

- › Fits a 4 x 4 post measuring 3 3/4" square
- › 45 per case @ 35 lbs



## Pyramid

### WPC-312-PYR

- › Fits a standard 4 x 4 post measuring 3 1/2" square
- › 45 per case @ 35 lbs

### WPC-334-PYR

- › Fits a 4 x 4 post measuring 3 3/4" square
- › 54 per case @ 35 lbs



## New England

### WPC-312-NWENG

- › Fits a standard 4 x 4 post measuring 3 1/2" square
- › 45 per case @ 35 lbs

### WPC-334-NWENG

- › Fits a 4 x 4 post measuring 3 3/4" square
- › 45 per case @ 35 lbs

### WPC-534-NWENG

- › Fits a 6 x 6 post measuring 5 1/2 to 5 3/4" square
- › 20 per case @ 45 lbs



Guaranteed  
NOT to  
Separate  
at Corners



theirs



ours

## Copper and Stainless Steel Caps

The 20 gauge copper post caps are made of 100% copper and have a natural look that will patina to a green color over time. The stainless steel caps are 20 gauge stainless steel. The caps will fit 4 X 4 and 6 X 6 posts and include 2 screws for mounting.

## Copper

### WPC-312-COPP

- › Fits a standard 4 x 4 post measuring 3 1/2" square
- › 25 per case @ 6 lbs

### WPC-534-COPP

- › Fits a 6 x 6 post measuring 5 1/2 to 5 3/4" square
- › 25 per case @ 11 lbs



## Stainless Steel

### WPC-312-SS

- › Fits a standard 4 x 4 post measuring 3 1/2" square
- › 25 per case @ 6 lbs

### WPC-534-SS

- › Fits a 6 x 6 post measuring 5 1/2 to 5 3/4" square
- › 25 per case @ 11 lbs



## Metal-Wood Combination

### 4 X 4 Post Size Only

- › Order a copper or stainless steel cap and a Traditional 4 X 4 Miter-less wood cap for a metal-wood combination



WPC-312-COPP  
WPC-312-TRD



WPC-312-SS  
WPC-312-TRD

## True Size Caps

### For 4", 5" and 6" True Post Sizes, Special Order

WPC-400-NWENG - for 4"

WPC-500-PYR- for 5"

WPC-600-NWENG - for 6"

- › Contact Customer Service for minimum quantities and lead time



# Braces, Frames, Bumpers and Closers

## Gate Braces for Vinyl and Wood Fences

**NW6132-BK** Black or **NW6132-WH** White

- ▶ Aluminium construction
- ▶ Available in powder-coated black or white
- ▶ Fits 4' x 4' to 6' x 6' gates
- ▶ 10 per case @ 54 lbs

Guards  
Against  
Sagging and  
Warping!

The  
Cost-effective  
Brace that  
Works!



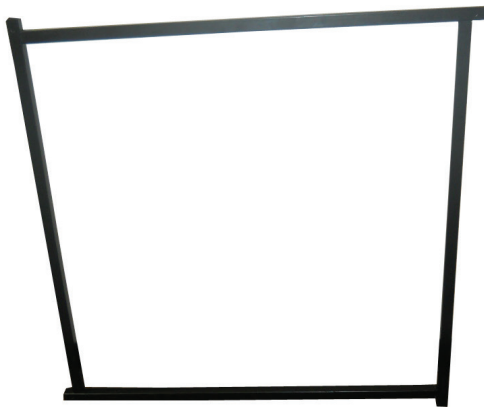
**Adjustable**

**Sturdy Attachment Brackets**

**WI-AGF**

- ▶ Zinc plate polyester coated
- ▶ Fits 3' X 3' to 6' X 6' gates

- ▶ Cross brace included to set final destination
- ▶ 1/Case



## Wood Gate Frame

**NW6260-SB-BK** Black, Short with attached hinges for 3' or 4' gates

**NW6260-TB-BK** Black, Tall with attached hinges for 5' or 6' gates

**NW6260NH-SB-BK** Black, Short without hinges for 3' or 4' gates

**NW6260NH-TB-BK** Black, Tall without hinges for 5' or 6' gates

- ▶ Powder coated steel
- ▶ 1/Case

### To Assemble:

- 1) Cut (2) 2 x 4's 2" shorter than the gate opening
- 2) Attach 2 X 4's to frame with enclosed screws
- 3) Nail gate boards to 2 x 4's
- 4) Mount gate to fence post using the lag screws enclosed

**Avoid sagging & warping with easy-to-make gates.**

## Nylon Gate Handle with Bumper

**WI-NGH-SB** (NW6143S-BK) Black

**WI-NGH-SB-WH** (NW6143S-WH) White

- ▶ Made with durable glass-filled nylon with UV inhibitors
- ▶ Flanges are each 2"(W) x 1.75"(D) for durable attachment

- ▶ Overall height is 4.5" and handle is 1" deep
- ▶ Very comfortable and easy to grasp
- ▶ Stainless steel screws included
- ▶ 50 each per case @ 25 lbs



Avoids  
Damage!

Rubber pad backing  
absorbs gate slamming shock,  
reducing latch wear

## Nylon Gate Bumper

**NW6186-SD-BK**

**NW6186-SD-WH**

- ▶ Made with durable glass-filled nylon with UV inhibitors
- ▶ Flanges are each 2"(W) x 1.75"(D) for durable attachment

- ▶ Overall height is 4.5"
- ▶ Stainless steel screws included
- ▶ 50 each per case @ 22 lbs

Avoids  
Damage!



## Hydraulic Gate Closers



**GC2-BK** Black

- ▶ **GC2-WH** White
- ▶ Works with gates up to 125 lbs
- ▶ Works with gates widths up to 54"
- ▶ Adjustable closing speed and adjustable latching speed
- ▶ 90° hold open feature
- ▶ Maximum opening of 90°
- ▶ Powder coated steel
- ▶ 12 each per case @ 30 lbs

**GC1-BK** Black

- ▶ Works with gates up to 150 lbs
- ▶ Works with gates widths up to 54"
- ▶ Adjustable closing speed
- ▶ 90° hold open feature
- ▶ Powder coated steel
- ▶ 8 each per case @ 43 lbs



## Shotgun® Gate Closer Patented

### Controlled Closing Power to Avoid Gate Slamming

**SHOTGUN-BK** Black

**SHOTGUN-SC** Satin Chrome

- ▶ One SKU closes any gate up to 250 lbs\*
- ▶ Anti-slam technology
- ▶ Adjustable closing speed
- ▶ No oil therefore no leaks
- ▶ 10 per case @ 67 lbs



Double barrel  
closing power

\*Tested on a 6' high, 6' wide. Needs a gate stop at 90 degrees

# Wood Fence Handles and Accessories

## 6" Standard Gate Handle

**NW257-26Q** (WI-SGH-6) Black  
**NW257-56** (WI-SGH-6W) White

- ▶ Zinc plate steel
- ▶ Screws included
- ▶ 100 each per case @ 19 lbs
- Also available in quantities of 50



Also Available in  
Hammered Bronze

## 9" Standard Gate Handle

**NW38398Q** (WI-SGH-9)

- ▶ Zinc plate steel with black finish
- ▶ Screws with black finish
- ▶ 100 each per case @ 31 lbs
- Also available in quantities of 50



## 9" Ornamental Gate Handle

**NW38396Q** (WI-OGH-9)

- ▶ Zinc plate steel with black finish
- ▶ Screws with black finish
- ▶ Does not match or fit handle from the NW38307 Thumb Latch Kit
- ▶ 100 each per case @ 43 lbs
- Also available in quantities of 50



## 11" Ornamental Gate Handle

**NW38307HANDLE**

- ▶ Zinc plate steel with black finish
- ▶ Screws with black finish
- ▶ **Matches and fits the handle from the NW38307 Thumb Latch Kit**
- ▶ 100 each per case @ 43 lbs
- Also available in quantities of 50



## Nylon Gate Handle

**NW314S-BK** Black (WI-NGH)

**NW314S-WH** White (WI-NGH-W)

- ▶ Made with durable glass-filled nylon with UV inhibitors
- ▶ Flanges are each 1.5"(W) x 1.25"(D) for durable attachment
- ▶ Overall height is 5" and handle is .75" deep
- ▶ Very comfortable and easy to grasp
- ▶ Stainless steel screws included
- ▶ 50 each per case @ 8 lbs



## 2" X 4" Rail Mounting Bracket – Steel

**NW288-MI** (WI-RMB-2x4)

- ▶ Zinc plate steel finish
- ▶ 400 each per case @ 45 lbs

**NW288-GV** (WI-RMB-2x4-HDG)

- ▶ HDG finish
- ▶ 400 each per case @ 45 lbs



## Chain Link to Wood Panel Bracket

**NW6287-PG** (WI-WSA-A) 2-3/8"

- ▶ Pre-Galvanized
- ▶ No screws included
- ▶ Chain Link Post to Wood Panels
- ▶ 50 each per case @ 23 lbs



**CL-8000 1-5/8"**

**CL-8001** (WI-SWAMB-2) 2"

**CL-8002** (WI-SWAMB-2.5) 2.5"

**CL-8010** (WI-SWAMB-3) 3"

- ▶ Adjustable Chain Link to Wood brackets
- ▶ 25 each per case
- ▶ Available in black



**CL-8009** (WI-SWMB)

- ▶ 2-3/8" Chain Link to Wood Adaptor
- ▶ 50 each per case



## Chain Link to Wood Panel Bracket

**CL-8003 1-5/8"**

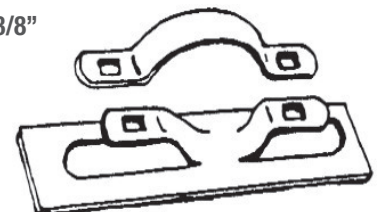
**CL-8004 1-7/8"**

**CL-8005 2-3/8"**

**CL-8008 2-7/8"**

**CL-8011** (WI-WSA-BASE2) 2-3/8"

- ▶ Chain Link to Wood Adaptor
- ▶ One-piece top clamp with one-piece base
- ▶ Carriage bolts included
- ▶ 100 per case





# Wood Fence Handles and Accessories

## Die Cast Plug

### WI-DCP

- › 2-1/2" diameter Die cast Plug
- › Hot dipped galvanized
- › 200 each per case @ 30 lbs



## 10" Gate Spring

### NW38304-PQ (WI-GS-13)

- › Zinc plate steel with black finish
- › Screws with black finish
- › Adjustable tension
- › 40 each per case @ 53 lbs



## Lag Screws

### NW5162

- › Zinc plate steel with black finish
- › 5/16" X 2"
- › 850 per case @ 33 lbs

### NW5162Q

- › HDG steel with black finish
- › 5/16" X 2"
- › 850 each per case @ 33 lbs



### WI-LAGSCREW-2

- › Zinc plate steel with black finish
- › 5/16" X 2"
- › 1200 per case @ 45 lbs

### WI-LAGSCREW-3

- › Zinc plate steel with black finish
- › 5/16" X 3"
- › 750 per case @ 40 lbs



## Gate Anti-Sag Kit – Steel

### NW38309Q (WI-ASGK)

- › Zinc plate steel finish
- › Screws with zinc plate finish
- › Cable length is 9'
- › 50 kits per case @ 31 lbs



### NW38309-SSM

- › Same as NW38309Q but in stainless steel with mill finish

## Steel Anti-Sag Kits

**NW6296-BK** (WI-STBK-D-BK) - Steel Cable Black with Plastic Coating

**NW6296-CL** (WI-STBK-D-CL) - Steel Cable Clear with Plastic Coating

**NW6296-WH** (WI-STBK-D-WH) - Steel Cable White with Plastic Coating

- › Cable length is 9'
- › 50 each per case



## Post Hole Diggers & Tools

### WI-005

- › Fiberglass handle
- › 1/Case



### WI-006

- › Wood Handle
- › 1/Case



### WI-CB06

- › Torque Bar
- › 1/Case





Phone: (813) 988-2628 • Fax (866) 988-3465  
www.nationwideindustries.com • info@nationwideindustries.com



**Zip-Latch®**  
Pool Gravity  
Latch

**Nautilus®**  
Self-Closing  
Hinges

**Cornerstone®**  
The Million Cycle  
Self-Closing Nylon Hinges

**Keystone®**  
Heavy Duty  
Key-Lockable Latches

**Keystone® X**  
eXternal Mount  
Key-Lockable Latches

**AquaLatch®**  
Magnetic Pool  
Safety Latches

**GateShare®**  
Multi-Lock  
Latch

**Keystone®**  
**PanicLatch™**  
Self-Locking  
PanicLatch™

**Manta®**  
Magnetic  
Nylon Latches

**OrnaMAG®**  
Magnetic  
Metal Latches

**Trident™**  
Magnetic Gate  
Safety Latches

**ArmorLatch®**  
Magnetic  
Latches

**LockThru®**  
Wood Gate  
Swing Latches

**V-Notch™**  
Hinges  
and Latches

**Shotgun®**  
Gate  
Closers

