

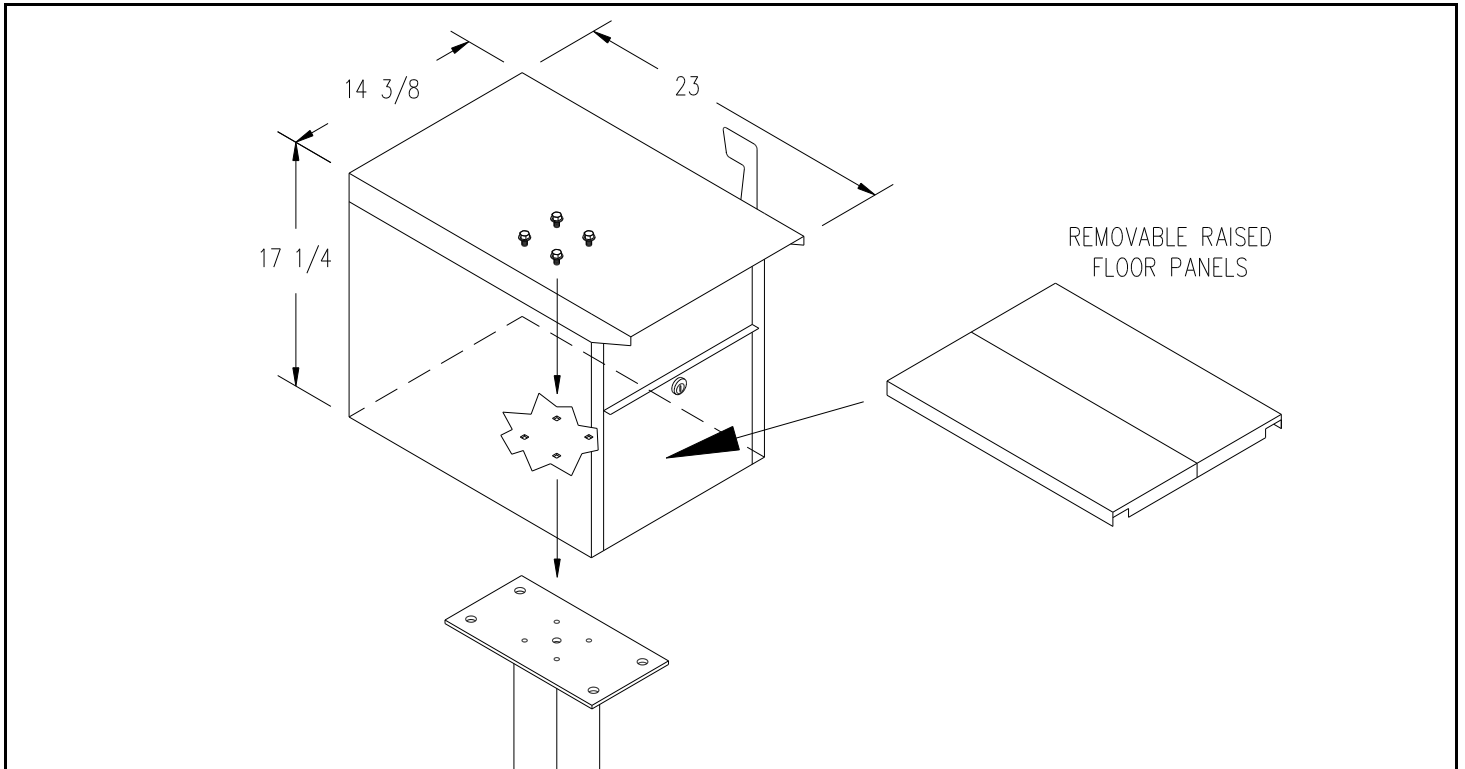
Mail Chests - 4350

Installation Instructions

U.S.P.S. APPROVED

Thank you for selecting Salsbury's 4350 aluminum mail chest. We are confident that the quality and construction of this product will provide years of maintenance free use.

Model 4350 Mail Chest



Installing Mail Chest Directly to a Pedestal

This instruction sheet is for installing the 4350 mail chest directly to a bolt-mounted or in-ground pedestal (ordered separately). Other installation instructions are available for installing the mail chests to a 2-wide spreader, a 3-wide spreader, or in a wall or column.

The mounting plate on the top of the pedestal has four tapped (threaded) holes. There are four 5/16" x 1/2" long hex washer head bolts provided with the pedestal to fasten the mail chest to the top of the pedestal.

Set the mail chest on the pedestal top plate and open the lower door of the mail chest. Remove the raised floor panels and install the hex washer head bolts through the mail chest holes into the four holes in the pedestal top plate. After assuring that the bolts are sufficiently tightened, drop in the two raised floor panels on which the deposited mail will rest. Refer to the illustration above for right and left positioning.

USPS Regulations

It is important to note that it is not the responsibility of mail carriers to open mailboxes that are locked, accept keys for this purpose, or lock mailboxes after delivery of the mail.

When you install a mailbox on a curbside or roadside, make sure that it is easily accessible to the mail carrier. Customers are required to contact the local post office before installing the mailbox to ensure its correct placement and height at the street. Generally, mailboxes are installed at a height of 41-45 inches from the road surface to the inside floor of the point of mail entry and are set back 6-8 inches from the front face of curb or road edge to the mailbox door.

SALSBURY INDUSTRIES

1010 East 62nd Street, Los Angeles, CA 90001-1598
Phone: 1-800-624-5269 Int'l Phone: 323-846-6700
Fax: 1-800-624-5299 Int'l Fax: 323-846-6800
www.mailboxes.com engineering@mailboxes.com

Installation instructions are provided as general guidelines. It is advised that a professional installer be consulted. Salsbury Industries assumes no product assembly or installation liability. Copyright © 2004 Salsbury Industries. All rights reserved.

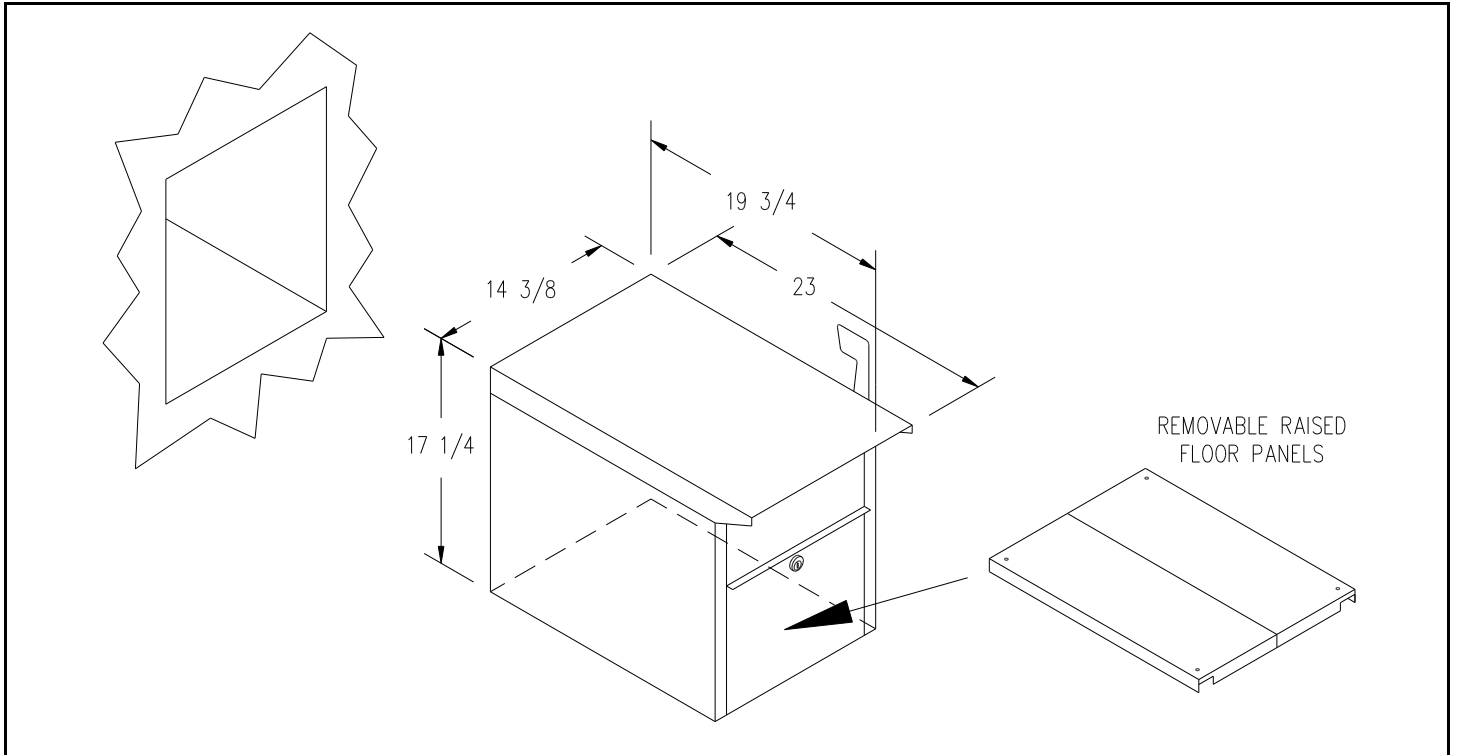
Mail Chests - 4350

Wall Mount Installation Instructions

U.S.P.S. APPROVED

Thank you for selecting Salsbury's 4350 aluminum mail chest. We are confident that the quality and construction of this product will provide years of maintenance free use.

Model 4350 Mail Chest



Installing Mail Chest in a Wall or Column

This instruction sheet is for installing the 4350 mail chest in a hole in a wall or column. Other installation instructions are available for installing the mail chests directly to a pedestal, on a 2-wide spreader, or on a 3-wide spreader.

It is recommended to have the unit present before starting the wall or column construction to obtain the best possible installation. The rough opening should be sized approximately $\frac{1}{2}$ " larger than the outside dimensions of the unit.

Due to construction variations and method of fastening the unit in the installation, the fastening hardware is not included. Choose fasteners that are appropriate for the construction method.

After completing the installation, drop in the two raised floor panels on which the deposited mail will rest. Refer to the illustration above for right and left positioning.

USPS Regulations

It is important to note that it is not the responsibility of mail carriers to open mailboxes that are locked, accept keys for this purpose, or lock mailboxes after delivery of the mail.

When you install a mailbox on a curbside or roadside, make sure that it is easily accessible to the mail carrier. Customers are required to contact the local post office before installing the mailbox to ensure its correct placement and height at the street. Generally, mailboxes are installed at a height of 41-45 inches from the road surface to the inside floor of the point of mail entry and are set back 6-8 inches from the front face of curb or road edge to the mailbox door.

SALSBURY INDUSTRIES

1010 East 62nd Street, Los Angeles, CA 90001-1598
Phone: 1-800-624-5269 Int'l Phone: 323-846-6700
Fax: 1-800-624-5299 Int'l Fax: 323-846-6800
www.mailboxes.com engineering@mailboxes.com

Installation instructions are provided as general guidelines. It is advised that a professional installer be consulted. Salsbury Industries assumes no product assembly or installation liability. Copyright © 2004 Salsbury Industries. All rights reserved.

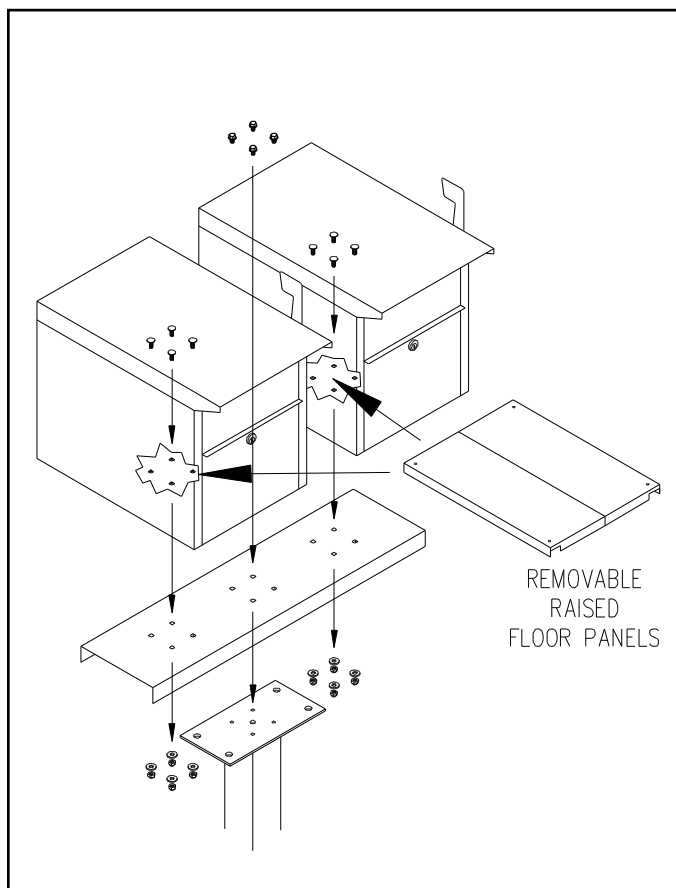
Mail Chests - 4350

2-Wide Spreader Installation Instructions

U.S.P.S. APPROVED

Thank you for selecting Salsbury's 4350 aluminum mail chest. We are confident that the quality and construction of this product will provide years of maintenance free use.

Model 4350 Mail Chests



Installing 4350 Mail Chests on a 2-Wide Spreader

This instruction sheet is for installing two (2) 4350 mail chests on a 2-wide spreader on a standard bolt-mounted or in-ground mounted pedestal (ordered separately). Other installation instructions are available for installing the mail chests on a 3-wide spreader, direct to a pedestal, or in a wall or column.

The mounting plate on the top of the pedestal has four tapped (threaded) holes. There are four 5/16" x 1/2" long hex washer head bolts provided with the pedestal to fasten the spreader to the top of the pedestal.

The mail chests are each mounted to the spreader using four 5/16" x 3/4" long carriage bolts, flat washers, and hex acorn nuts. Two of these kits are provided with the spreader, one for each of the mail chests.

Set a mail chest in one of the positions on the spreader and open the lower door of the mail chest. Install the carriage bolts through the mail chest holes and through the four holes in the spreader. After assuring that the square shanks under the bolt heads are securely in the square holes in the bottom of the mail chest, attach the flat washers and hex acorn nuts to the bottom of the bolts. Make sure the nuts are sufficiently tightened, and drop in the two raised floor panels on which the deposited mail will rest. Refer to the illustration for right and left positioning of the panels.

Repeat for the second 4350 mail chest.

USPS Regulations

It is important to note that it is not the responsibility of mail carriers to open mailboxes that are locked, accept keys for this purpose, or lock mailboxes after delivery of the mail.

When you install a mailbox on a curbside or roadside, make sure that it is easily accessible to the mail carrier. Customers are required to contact the local post office before installing the mailbox to ensure its correct placement and height at the street. Generally, mailboxes are installed at a height of 41-45 inches from the road surface to the inside floor of the point of mail entry and are set back 6-8 inches from the front face of curb or road edge to the mailbox door.

SALSBURY INDUSTRIES

1010 East 62nd Street, Los Angeles, CA 90001-1598
Phone: 1-800-624-5269 Int'l Phone: 323-846-6700
Fax: 1-800-624-5299 Int'l Fax: 323-846-6800
www.mailboxes.com engineering@mailboxes.com

Installation instructions are provided as general guidelines. It is advised that a professional installer be consulted. Salsbury Industries assumes no product assembly or installation liability.
Copyright © 2004 Salsbury Industries. All rights reserved.

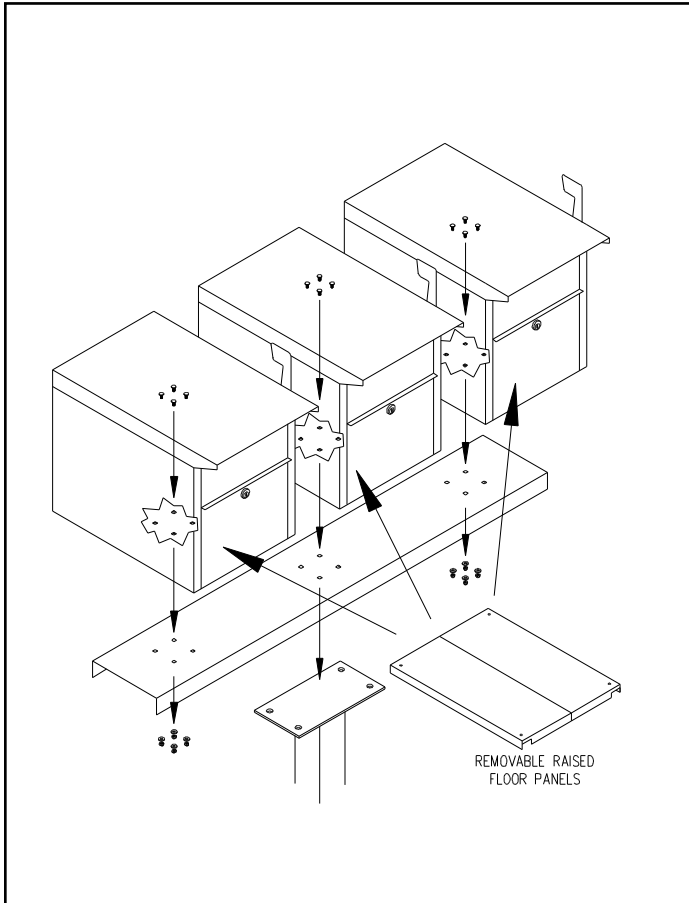
Mail Chests - 4350

3-Wide Spreader Installation Instructions

U.S.P.S. APPROVED

Thank you for selecting Salsbury's 4350 aluminum mail chest. We are confident that the quality and construction of this product will provide years of maintenance free use.

Model 4350 Mail Chests



Installing 4350 Mail Chests on a 3-Wide Spreader

This instruction sheet is for installing three 4350 mail chests on a 3-wide spreader on a bolt-mounted or in-ground mounted pedestal (ordered separately). Other installation instructions are available for installing the mail chests on a 2-wide spreader, direct to a pedestal, or in a wall or column.

The mounting plate on the top of the pedestal has four tapped (threaded) holes. There are four 5/16" x 1/2" long hex washer head bolts provided with the pedestal to fasten the middle mail chest and the spreader to the top of the pedestal. Open the lower door of the mail chest and install the four bolts. Make sure the bolts are sufficiently tightened, and drop in the two raised floor panels on which the deposited mail will rest. Refer to the illustration for right and left positioning of the panels.

The other two mail chests are each mounted to the spreader using four 5/16" x 3/4" long carriage bolts, flat washers, and hex acorn nuts. Two of these kits are provided with the spreader, one for each of the mail chests.

Set a mail chest in one of the end positions on the spreader and open the lower door. Install the carriage bolts through the mail chest holes and through the four holes in the spreader. After assuring that the square shanks under the bolt heads are securely in the square holes in the bottom of the mail chest, attach the flat washers and hex acorn nuts to the bottom of the bolts. Make sure the nuts are sufficiently tightened, and drop in the two raised floor panels on which the deposited mail will rest. Refer to the illustration for right and left positioning of the panels.

Repeat for the remaining mail chest.

USPS Regulations

It is important to note that it is not the responsibility of mail carriers to open mailboxes that are locked, accept keys for this purpose, or lock mailboxes after delivery of the mail.

When you install a mailbox on a curbside or roadside, make sure that it is easily accessible to the mail carrier. Customers are required to contact the local post office before installing the mailbox to ensure its correct placement and height at the street. Generally, mailboxes are installed at a height of 41-45 inches from the road surface to the inside floor of the point of mail entry and are set back 6-8 inches from the front face of curb or road edge to the mailbox door.

SALSBURY INDUSTRIES

1010 East 62nd Street, Los Angeles, CA 90001-1598
Phone: 1-800-624-5269 Int'l Phone: 323-846-6700
Fax: 1-800-624-5299 Int'l Fax: 323-846-6800
www.mailboxes.com engineering@mailboxes.com

Installation instructions are provided as general guidelines. It is advised that a professional installer be consulted. Salsbury Industries assumes no product assembly or installation liability. Copyright © 2004 Salsbury Industries. All rights reserved.

Mail Chests - 4350

In-Ground Mount Pedestal Installation Instructions

U.S.P.S. APPROVED

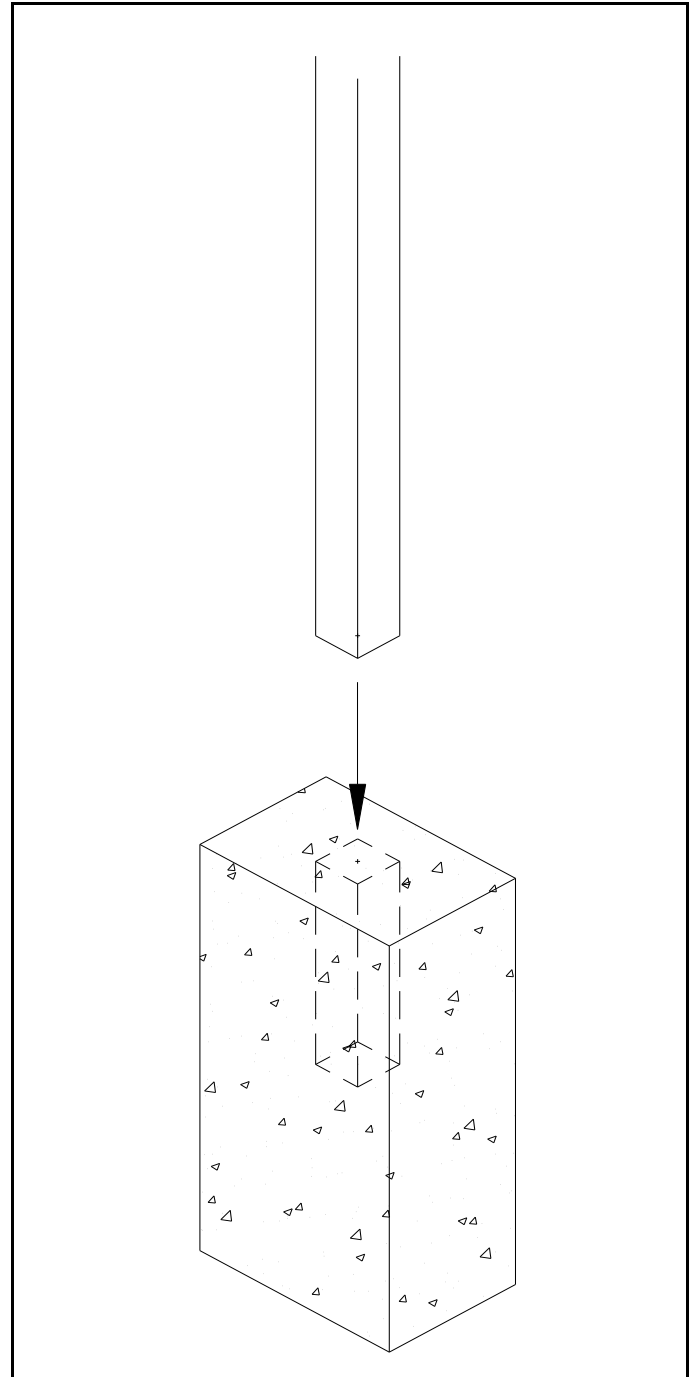
Installing the In-Ground Mounted Post Into Concrete

When you install a curbside mailbox, make sure that it is easily accessible to the mail carrier. By regulation it should be 41" to 45" from the ground or street surface up to the inside floor of the mailbox. The door should be set back 6" to 8" back from the front face of the curb or the road edge. However, you should check with your local postmaster to ensure that the mailbox is installed according to local regulations.

Dig the hole for the concrete footing, and prepare the concrete. You will need approximately 4-1/2 cubic feet. The top surface of the footing should be about 12" by 18" and extend 36" into the ground. See the illustration for the relative position of the rectangular footing to the post and mailbox. The bottom of the hole for the concrete footing should be filled with about 6" of gravel to promote drainage under the post. The top of the footing should be sloped for water runoff.

The concrete must be below the frost line. Otherwise the post will move when the ground freezes. Be careful not to puncture water, sewer, or gas lines when digging holes for footing.

Set the post in the hole approximately 18" down. Fill the hole with the prepared concrete mix. Prod the mix with a stick while filling to reduce any air pockets. If you want to conceal the concrete, pour it to within a few inches of the top of the hole and cover with soil after the concrete has set. Use a carpenter's level on the sides of the post to ensure that the post is aligned vertically. Periodically check the vertical alignment of the post as the concrete is curing.



SALSBURY INDUSTRIES

1010 East 62nd Street, Los Angeles, CA 90001-1598
Phone: 1-800-624-5269 Int'l Phone: 323-846-6700
Fax: 1-800-624-5299 Int'l Fax: 323-846-6800
www.mailboxes.com engineering@mailboxes.com

Installation instructions are provided as general guidelines. It is advised that a professional installer be consulted. Salsbury Industries assumes no product assembly or installation liability.
Copyright © 2004 Salsbury Industries. All rights reserved.

Mail Chests - 4350

Bolt Mount Pedestal Installation Instructions

U.S.P.S. APPROVED

Installing the Bolt Mounted Post on to Anchor Bolts

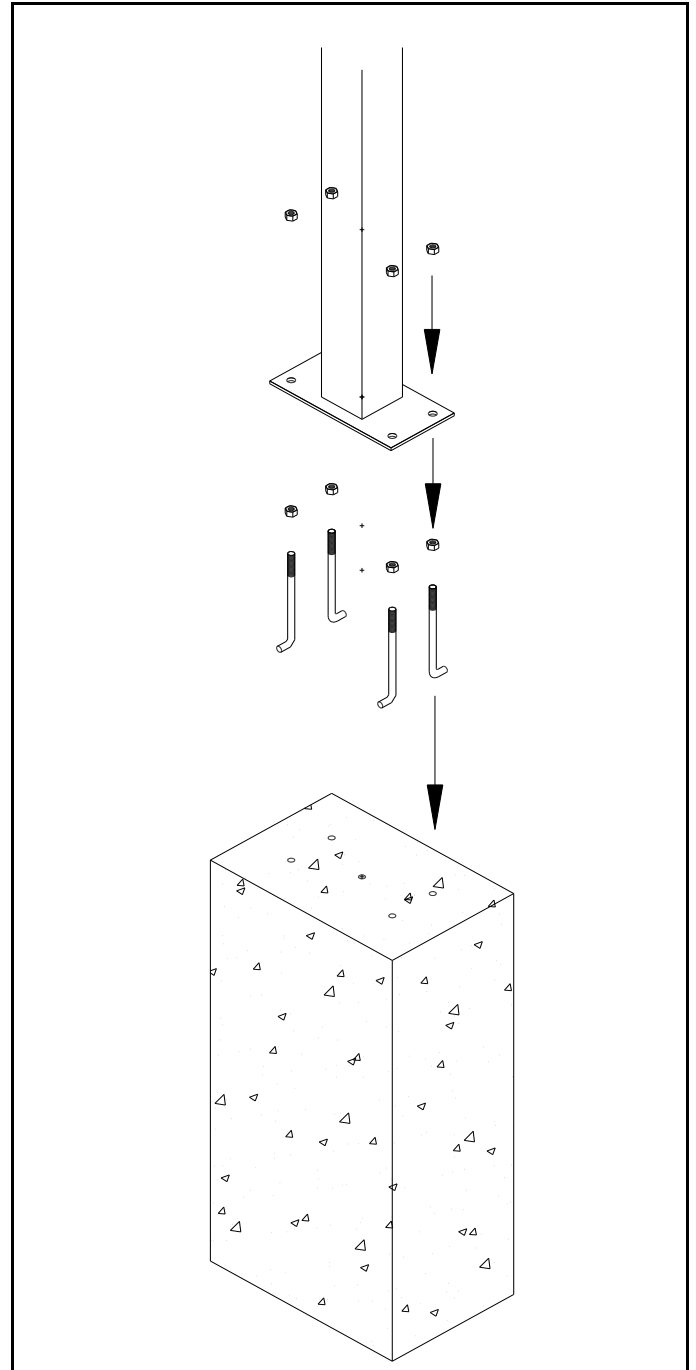
When you install a curbside mailbox, make sure that it is easily accessible to the mail carrier. The bolt mount pedestal is 42" high. By regulation it should be 41" to 45" from the ground or street surface up to the inside floor of the mailbox. The door should be set back 6" to 8" back from the front face of the curb or the road edge. However, you should check with your local postmaster to ensure that the mailbox is installed according to local regulations.

Dig the hole for the concrete footing, and prepare the concrete. You will need approximately 4-1/2 cubic feet. The top surface of the footing should be about 12" by 18" and extend 36" into the ground. See the illustration for the relative position of the rectangular footing to the post and mailbox. The bottom of the hole for the concrete footing should be filled with about 6" of gravel to promote drainage under the post. The top of the footing should be sloped for water runoff.

The concrete must be below the frost line. Otherwise the post will move if the ground freezes. Be careful not to puncture water, sewer, or gas lines when digging holes for footing.

Attach the 4 J-shaped anchor bolts to the base of the post with 4 nuts under and 4 nuts over the bottom mounting plate. Pour the concrete into the hole, prodding the mix with a stick while filling to reduce any air pockets. Press the anchor bolts on the bottom of the post into the concrete until the bottom plate is resting on the top surface of the wet concrete. Use a carpenter's level on the sides of the post to ensure that the post is aligned vertically. Periodically check the vertical alignment of the post as the concrete is curing.

The concrete will shrink as it hardens, leaving a space between the anchor and the concrete when it is cured. To prevent this, loosen the top bolt one full turn prior to inserting into the wet concrete. After the anchor is inserted into the wet concrete, place your foot on the top of the threaded anchor and push down until the top nut is pressed against the anchor plate. After the concrete has hardened, re-tighten the top bolt.



SALSBURY INDUSTRIES

1010 East 62nd Street, Los Angeles, CA 90001-1598
Phone: 1-800-624-5269 Int'l Phone: 323-846-6700
Fax: 1-800-624-5299 Int'l Fax: 323-846-6800
www.mailboxes.com engineering@mailboxes.com

Installation instructions are provided as general guidelines. It is advised that a professional installer be consulted. Salsbury Industries assumes no product assembly or installation liability. Copyright © 2004 Salsbury Industries. All rights reserved.