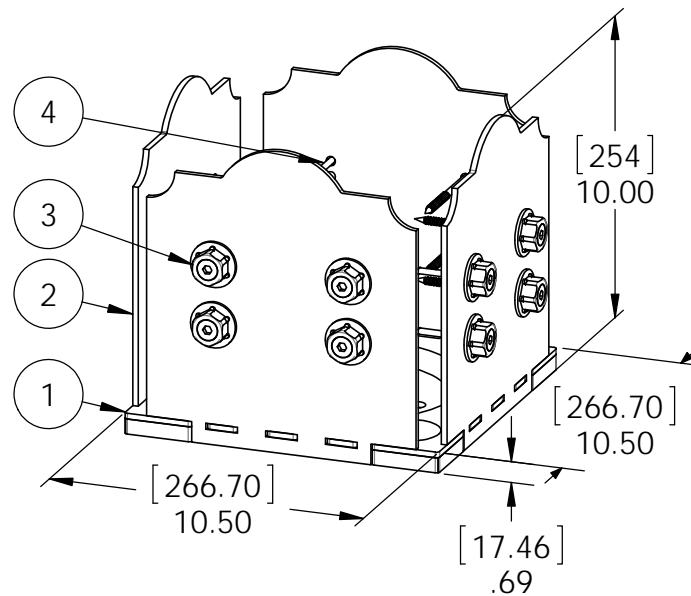
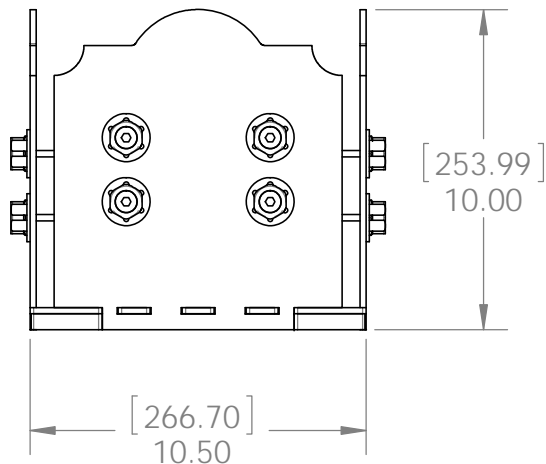
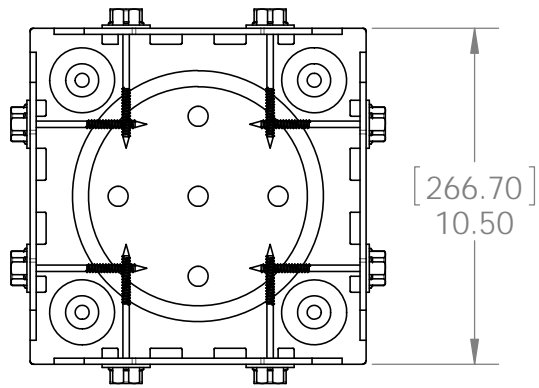


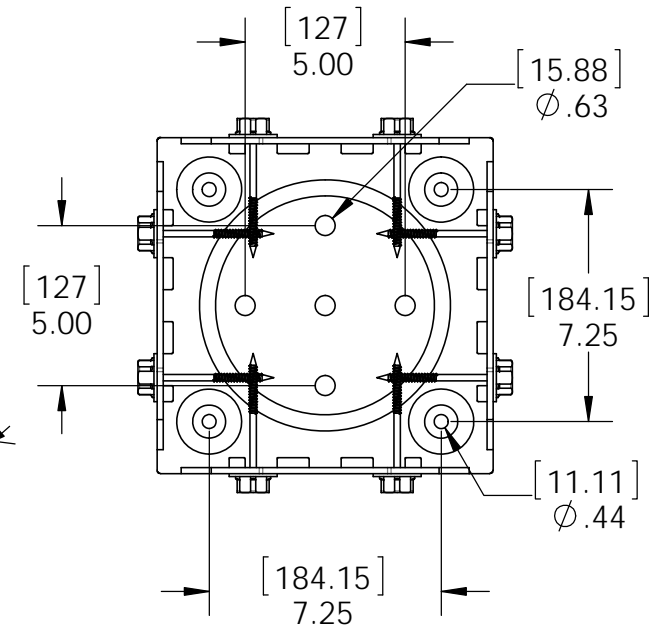
Product & Packaging Specs

10x10 Post Base

Item #: 56605



ITEM NO.	QTY.	PART NUMBER	DESCRIPTION
1	1	56605-11	Assembly, 10x10 Stand Off
2	4	56605-15	Plate, 10x10 Side Compression
3	16	56621	1 1/2" Hex Cap Nut
4	16	56627	OWT Timber Screw 3-3/4"



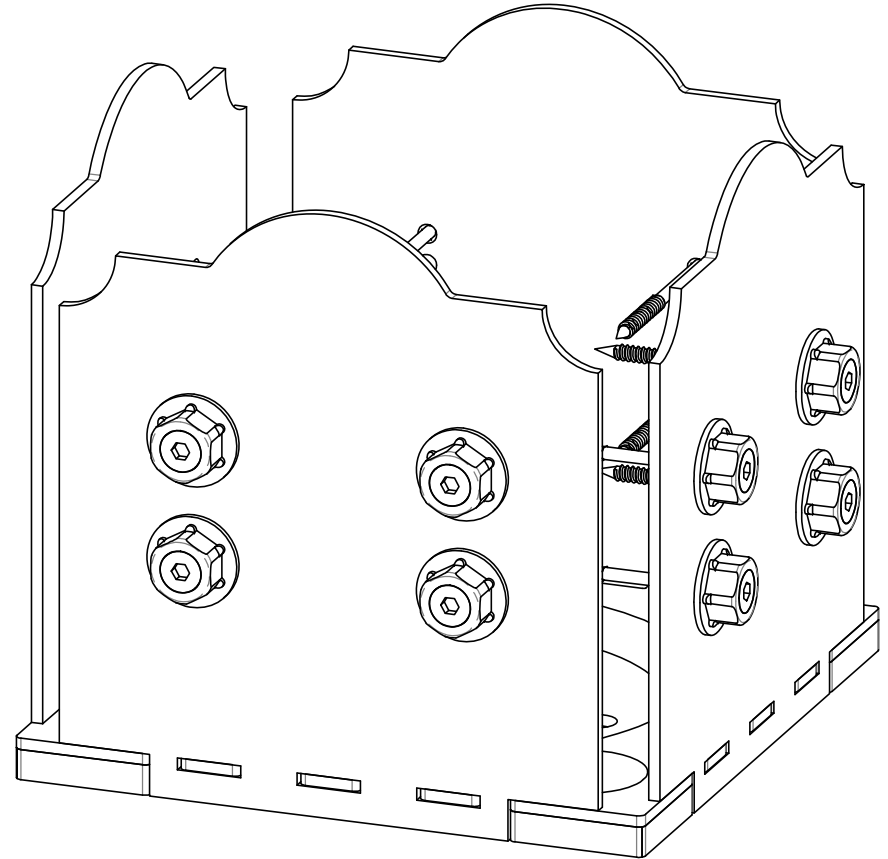
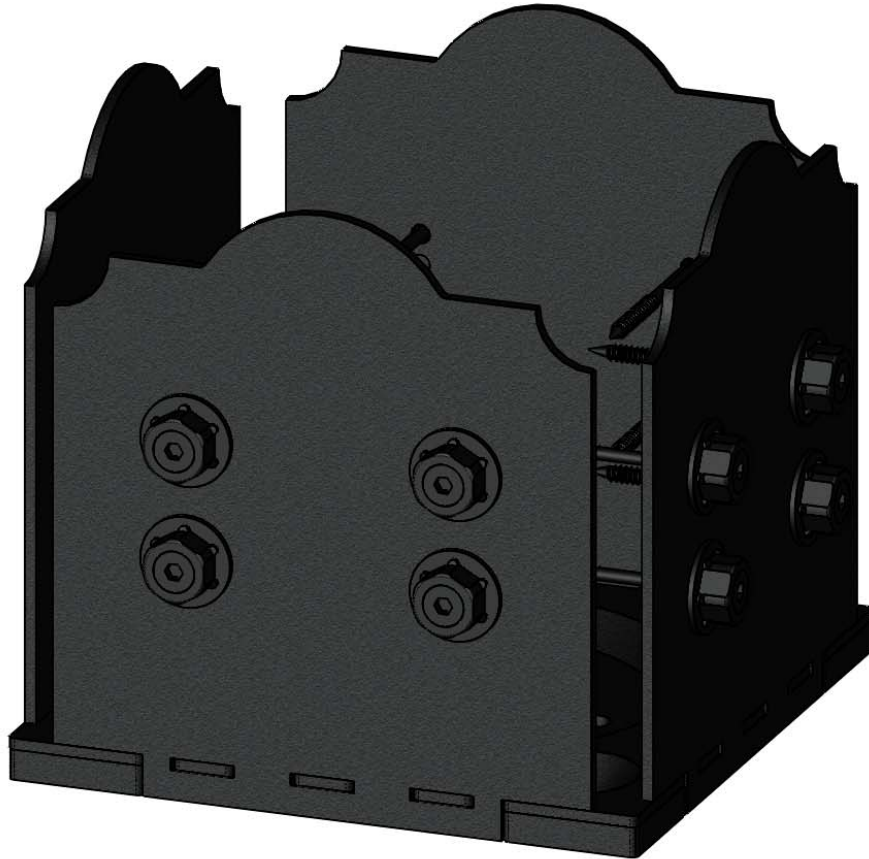
Weight: 55.29 LBS
 Scale: 1:6
 Last updated: 7/15/2015

56605-10

Product & Packaging Specs

10x10 Post Base

Item #: 56605



Weight: 55.29 LBS
Scale: 1:3
Last updated: 7/15/2015

56605-10

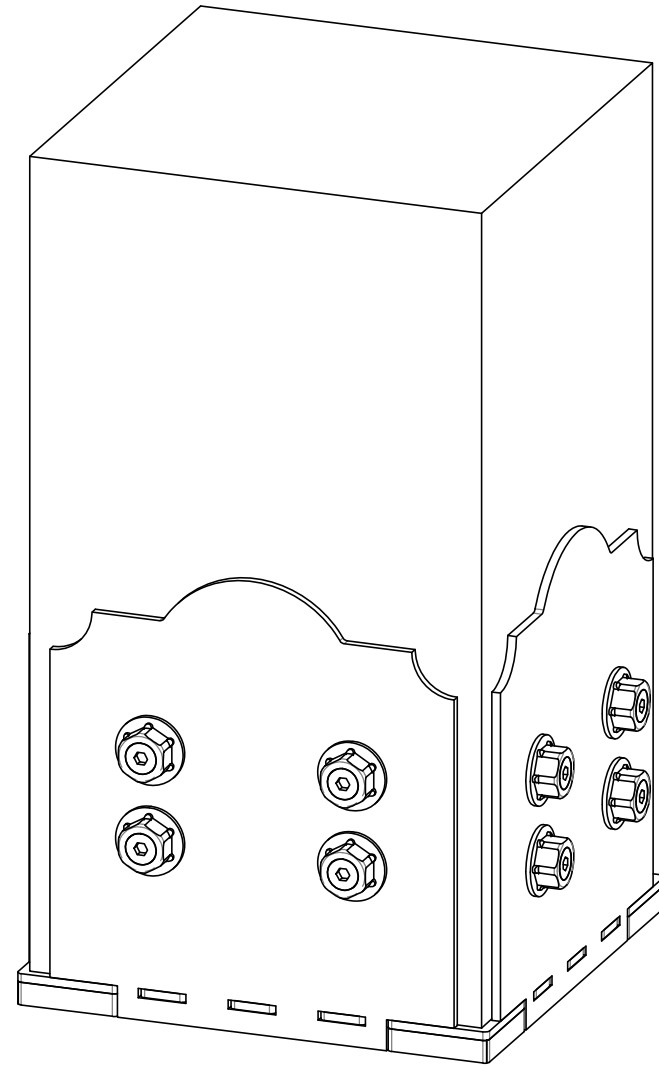
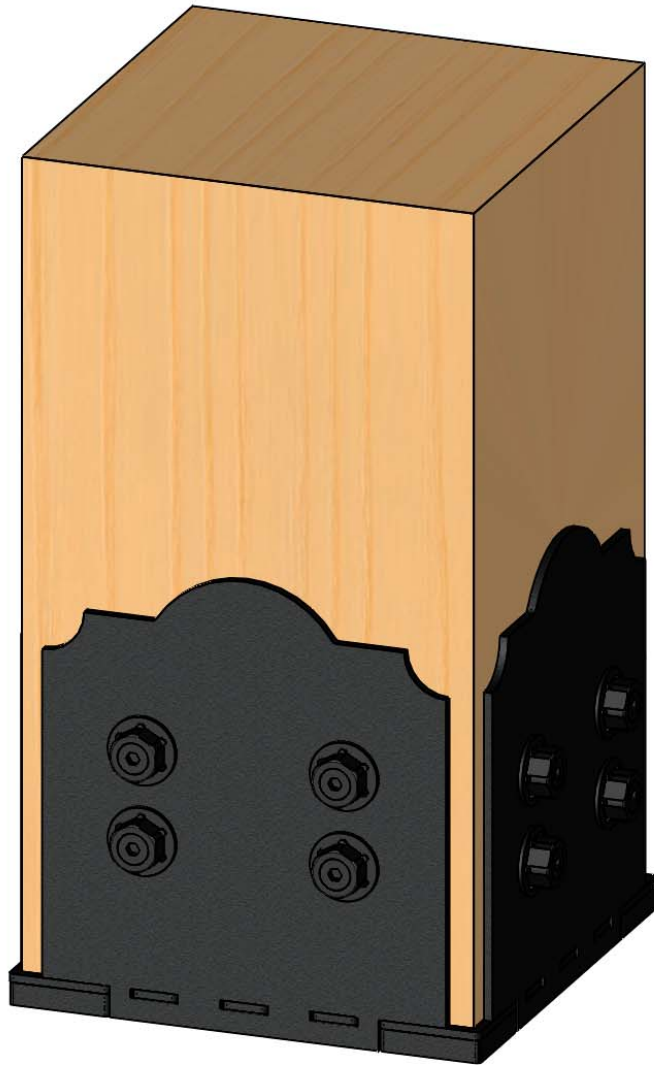


OZCO BUILDING PRODUCTS

Product & Packaging Specs

10x10 Post Base

Item #: Typical Installation & Basic Assembly



Scale: 1:4
Last updated: 7/15/2015

56605-10

V1.00 - Installation Instructions effective May 1, 2015 and reflects information that available as of April 10, 2014. This information is updated periodically and should not be relied upon after May 1, 2015. Please visit www.OZCOBP.com to get current information

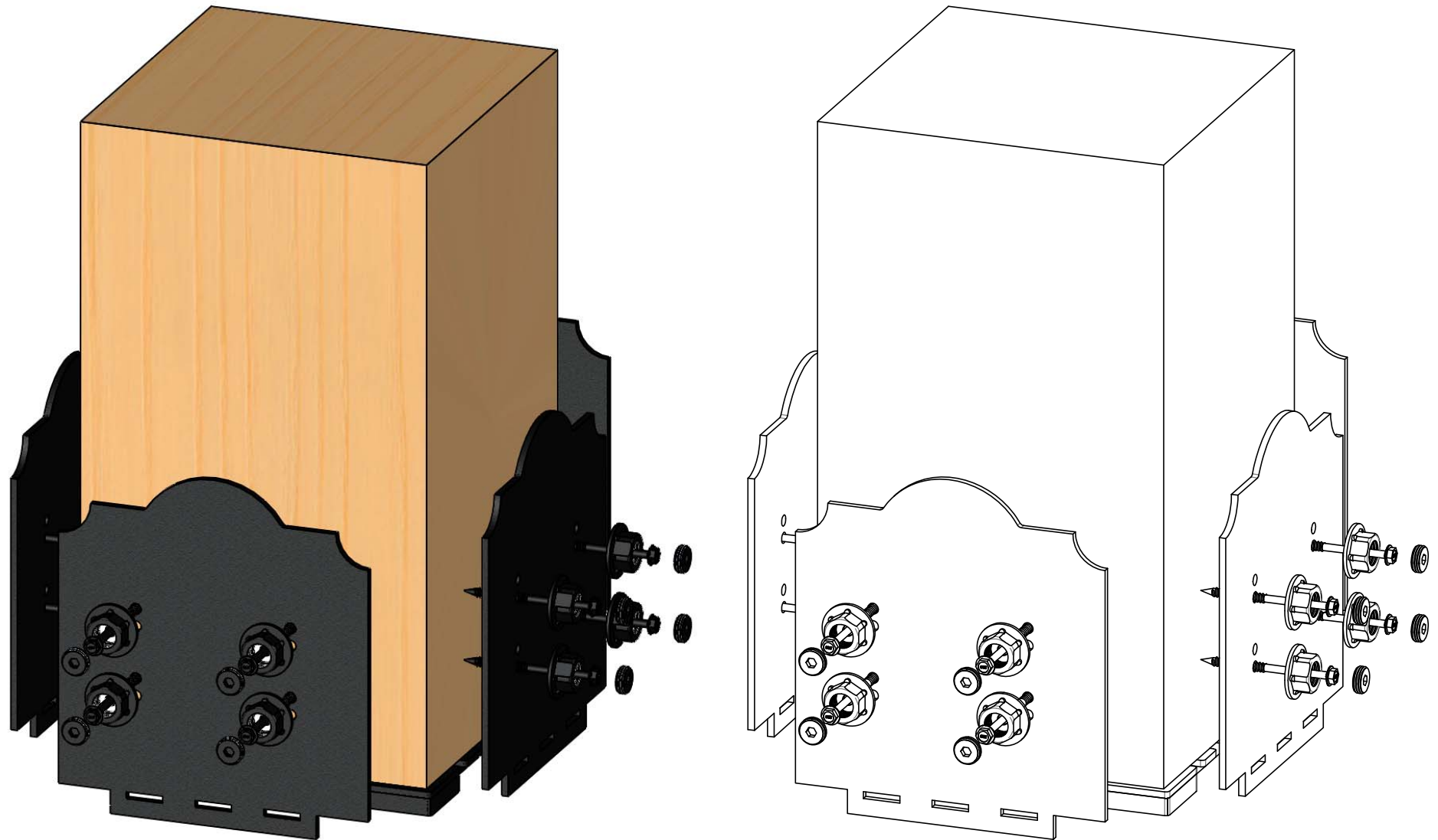


OZCO BUILDING PRODUCTS

Product & Packaging Specs

10x10 Post Base

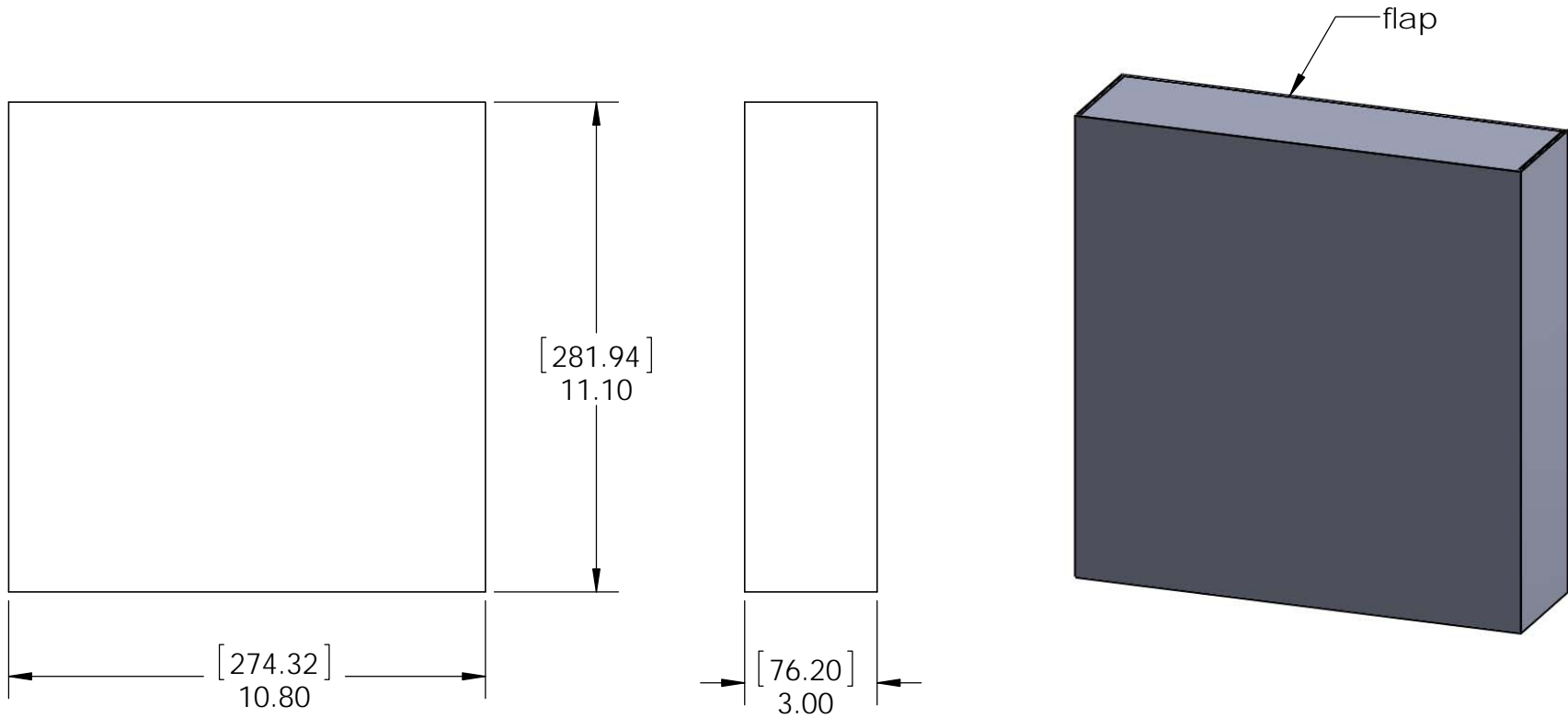
Item #: Typical Installation & Basic Assembly



Scale: 1:4
Last updated: 7/15/2015

56605-10

V1.00 - Installation Instructions effective May 1, 2015 and reflects information that available as of April 10, 2014. This information is updated periodically and should not be relied upon after May 1, 2015. Please visit www.OZCOBP.com to get current information



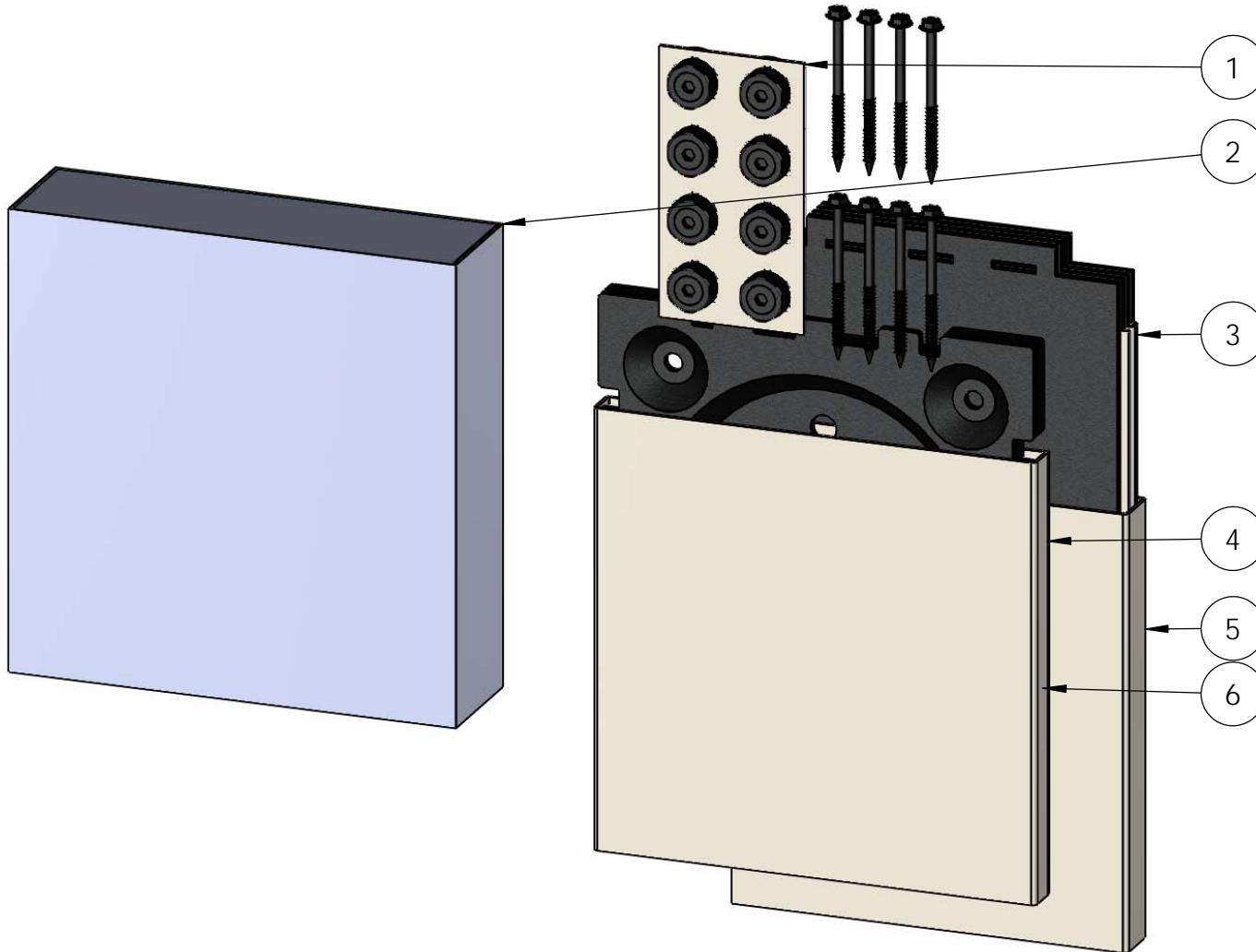
Material: Corrugated Paper
 Finish: See artwork
 Weight: 0.12 LBS
 Scale: 1:2
 Last updated: 7/15/2015

56605-10

Product & Packaging Specs

56605 Packing

Item #: Box packing



ITEM NO.	QTY.	PART NUMBER	DESCRIPTION
1	1	Insert, 56605 HCN	Insert, 56605 HCN
2	1	Box, 56605	Box, 10x10 Post Base
3	1	Sleeve, 56605 Plate	Sleeve, 56605 Plate
4	1	Box, 56605 Base	Box, 56605 Base
5	1	Box, 56605 Plate Sleeve	Box, 56605 Plate Sleeve
6	1	56605	10x10 Post Base
7	1	Bag, 4x6 packing	Bag, 4x6 Packing

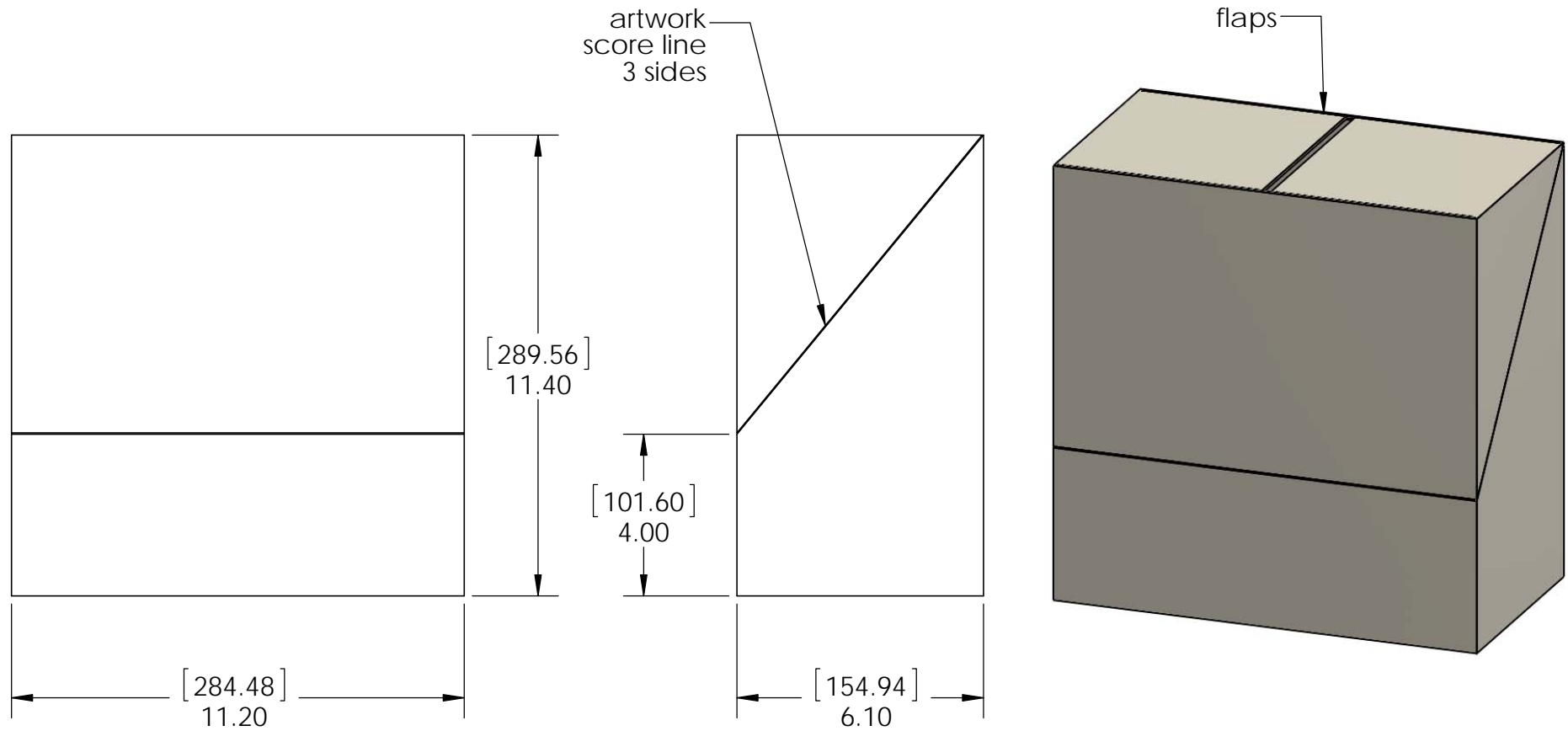
item 7 utilized for screws (not shown)

Weight: 24.30 LBS
 Scale: 1:4
 Last updated: 7/15/2015

Product & Packaging Specs

Case, 10x10 Post Base Box

Item #: Case, 56605



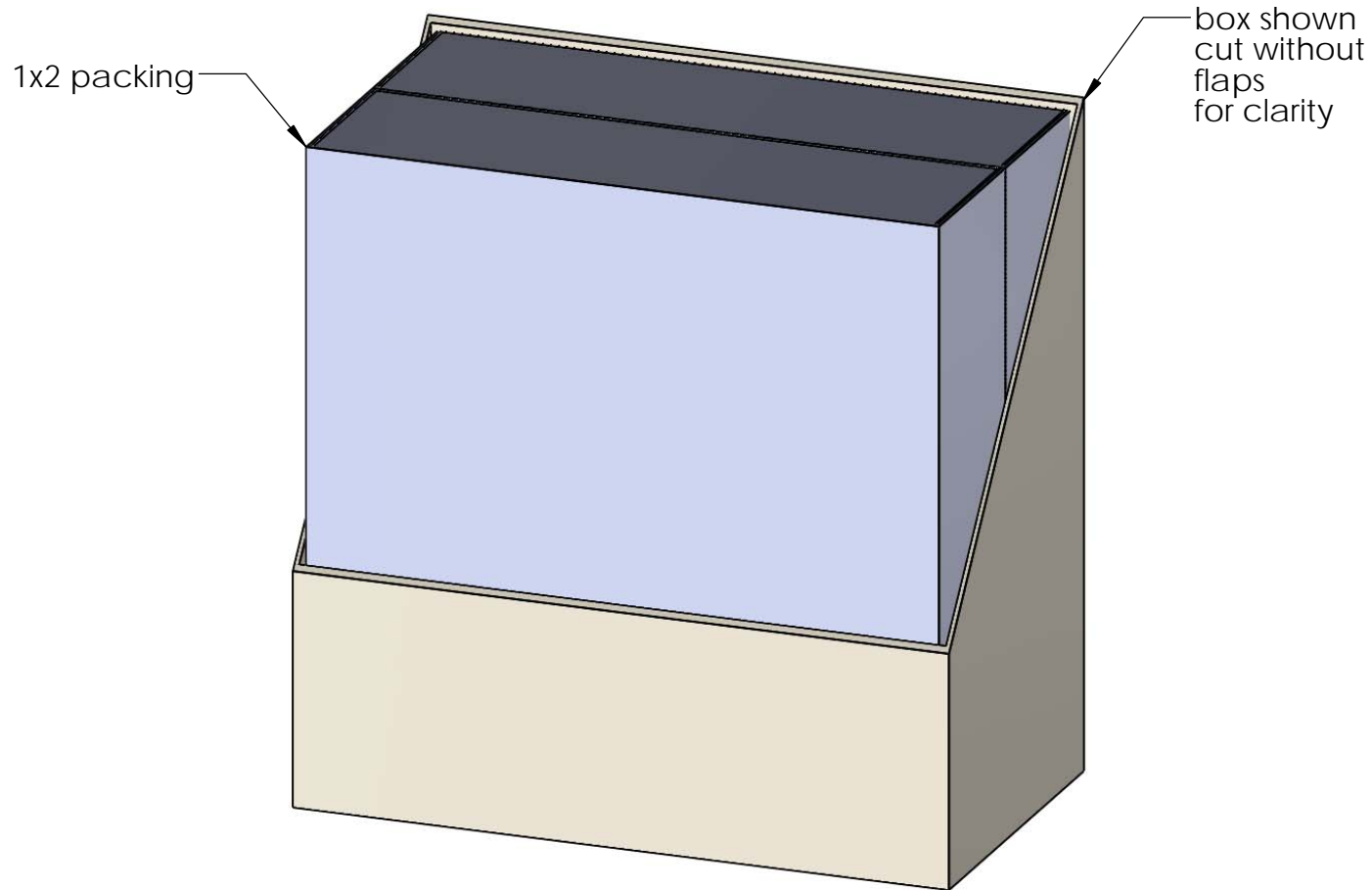
Material: Corrugated Paper
 Finish: See artwork
 Weight: 0.23 LBS
 Scale: 1:4
 Last updated: 7/15/2015

56605-10

Product & Packaging Specs

56605 Packing

Item #: Case packing



Weight: 50 LBS
Scale: 1:3
Last updated: 7/15/2015

56605-10



OZCO BUILDING PRODUCTS

Product & Packaging Specs

56605 Packing

Item #: Pallet packing

Item #: **56605** | **10x10-PB-LS**

10X10 Post Base Laredo Sunset

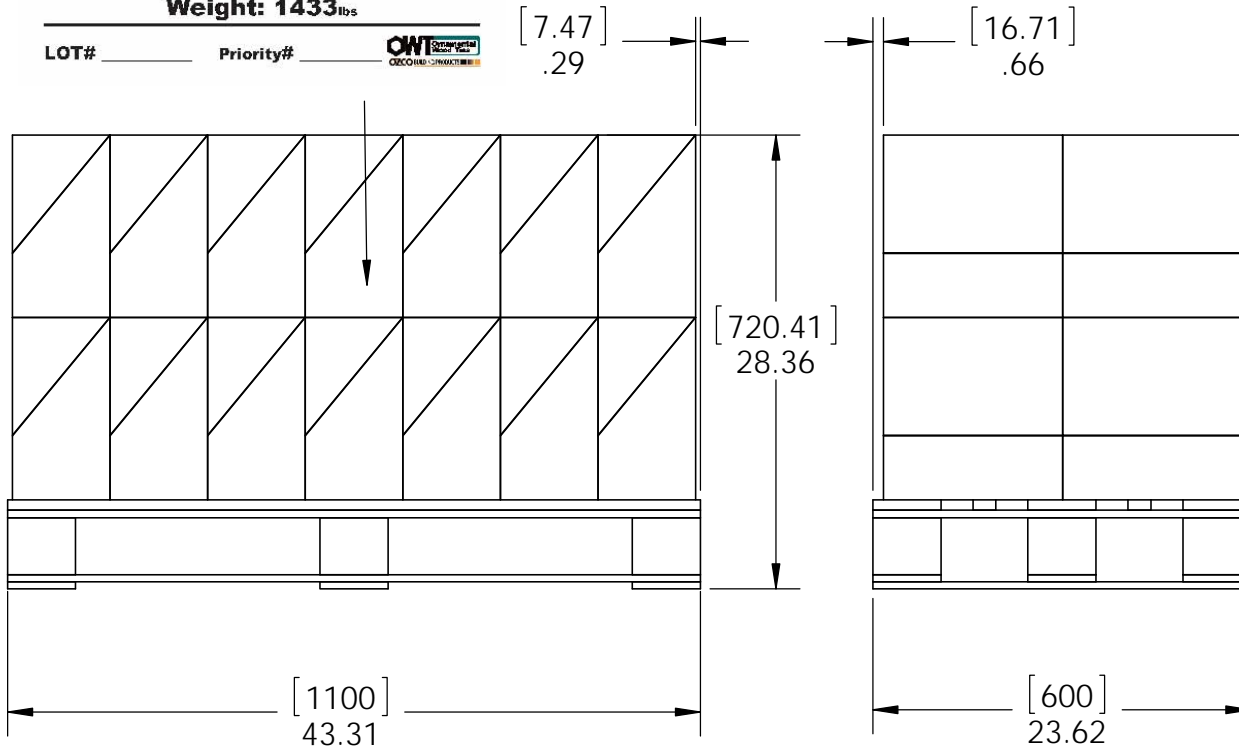
PALLET | **56 pcs**

SKU#: **56805**

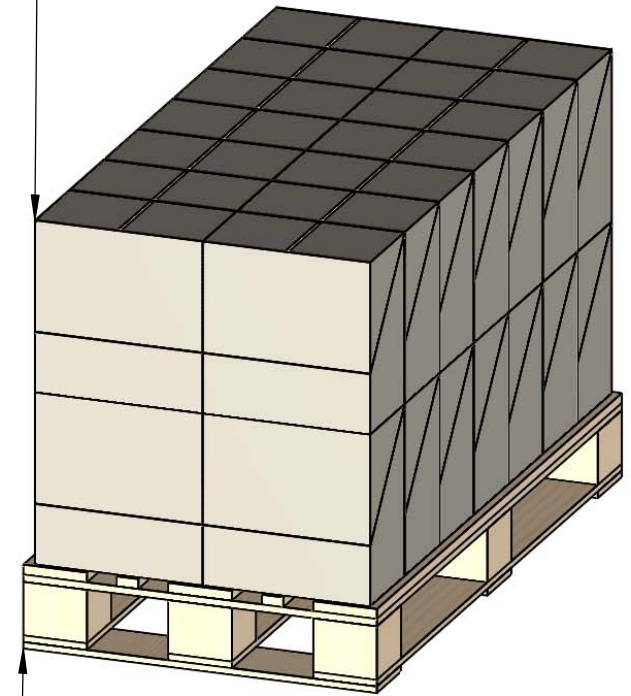


Weight: 1433 lbs

LOT# _____ Priority# _____ 



Total number of cases: 28
Total number of pieces:
28x2=56 pieces on pallet



U pallet



additional pallet packing instructions
plywood on top layer
strap to pallet
clear wrap around boxes

Weight: 1433 LBS
Scale: 1:12
Last updated: 7/15/2015

56605-10