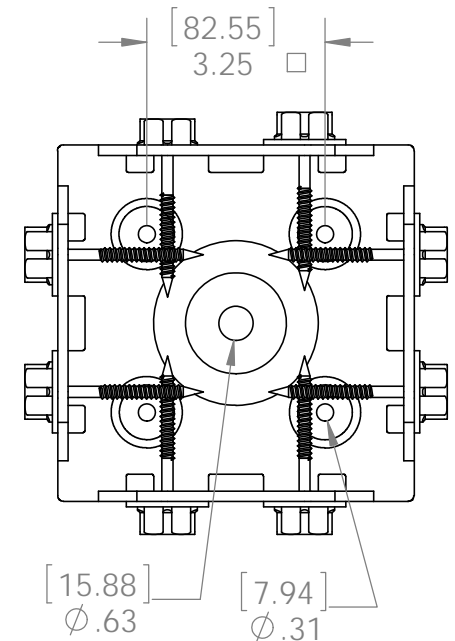
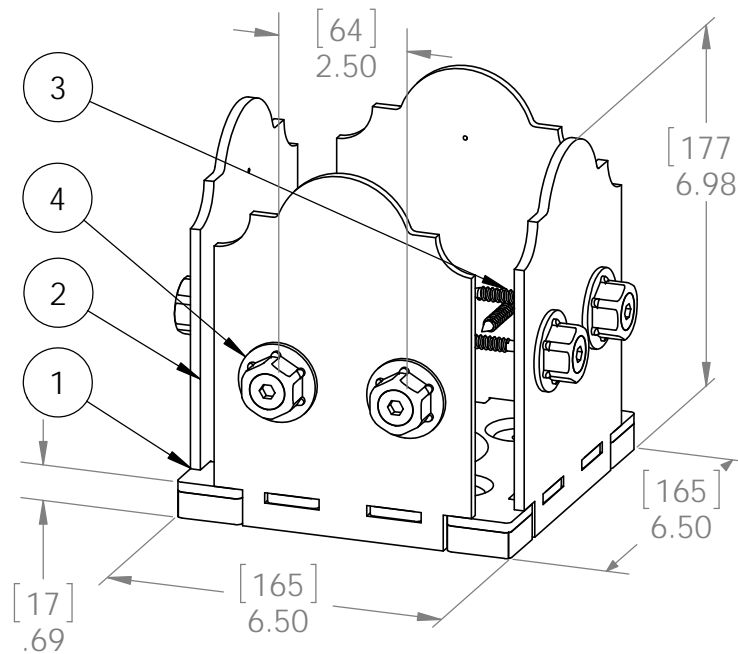
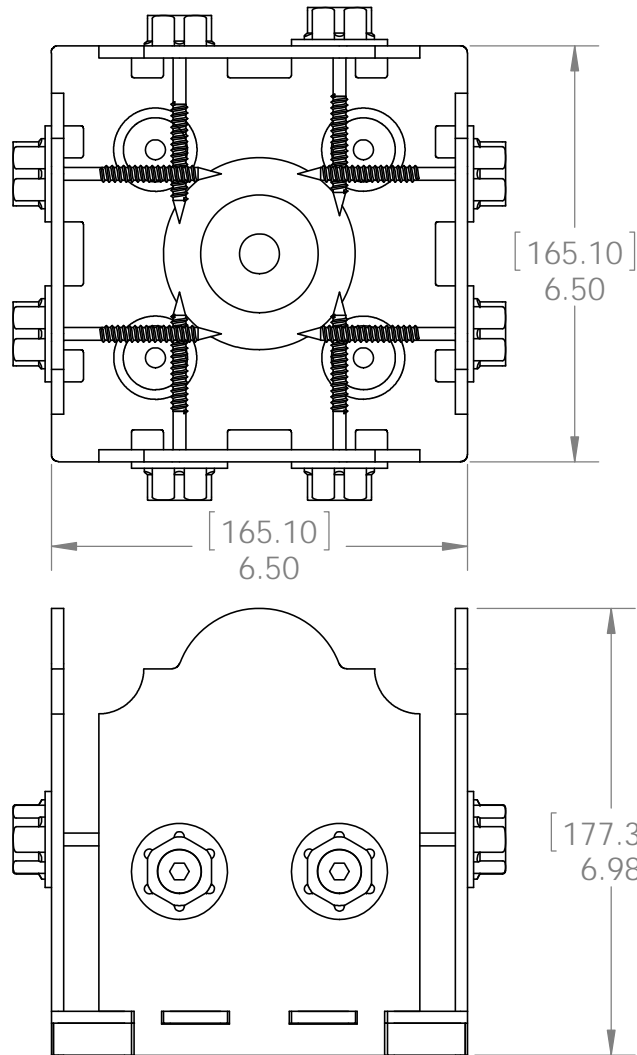


Product & Packaging Specs

6x6 Post Base

Item #: 56608

ITEM NO.	QTY.	PART NUMBER	DESCRIPTION
1	1	56608-11	Assembly, 6x6 Stand Off
2	4	56608-15	Plate, 6x6 Side Compression
3	0.32	56626	OWT Timber Screw 2-3/4"
4	8	56621	1 1/2" Hex Cap Nut



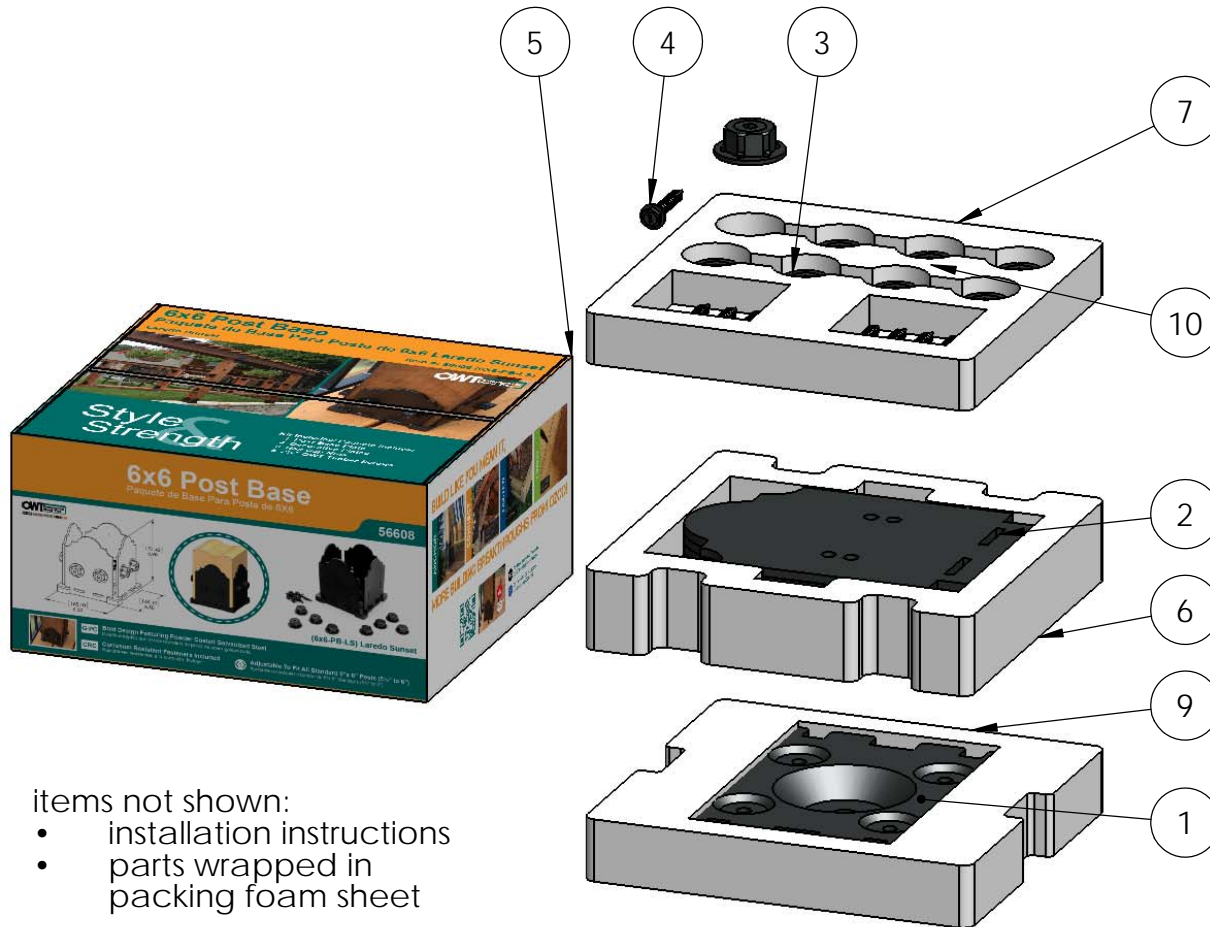
Weight: 9.14 LBS
Scale: 1:3
Last updated: 7/13/2015

56608-10

Product & Packaging Specs

56608 Packing

Item #: Box packing



items not shown:

- installation instructions
- parts wrapped in packing foam sheet

ITEM NO.	QTY.	PART NUMBER	DESCRIPTION
1	1	56608-12	Adjustable Base Plate Sidewall
2	4	56608-15	Plate, 6x6 Side Compression
3	8	56621	1 1/2" Hex Cap Nut
4	8	56626	OWT Timber Screw 2-3/4"
5	1	Post Base Kit Boxes	Box, 6x6 Post Base
6	1	Inserts, 56604 packing	Insert, 56604 Plate
7	1	Inserts, 56604 packing	Insert, 56604 Fastener
9	1	Inserts, 56604 packing	Insert, 56604 Base

Weight: 10.48 LBS

Scale: 1:4

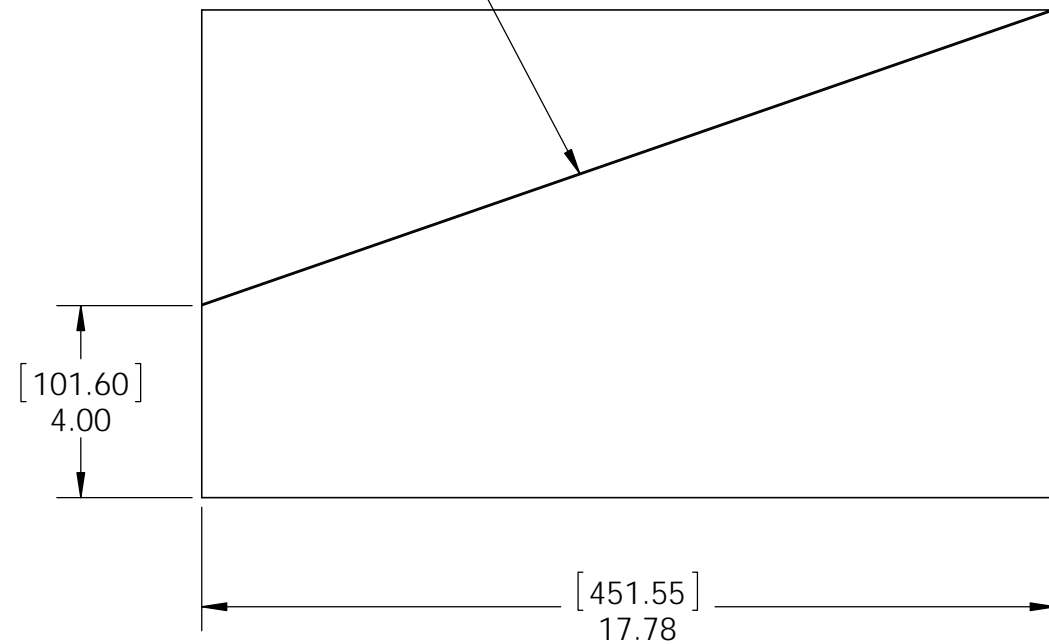
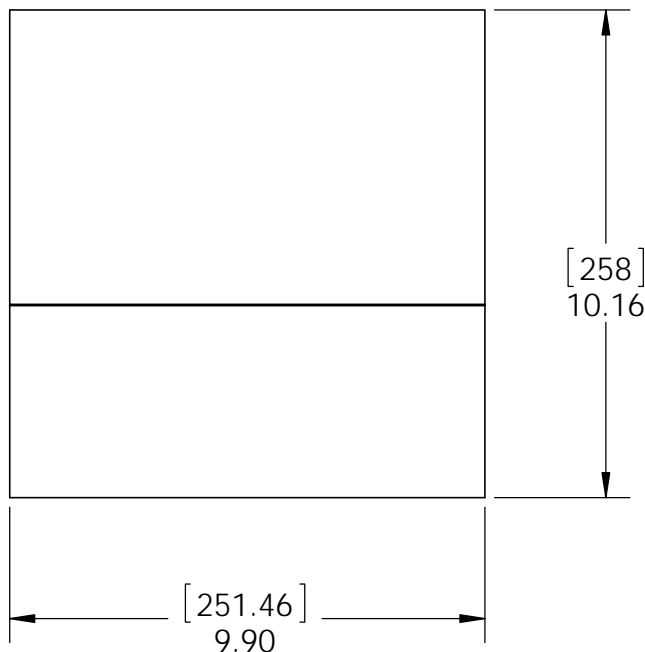
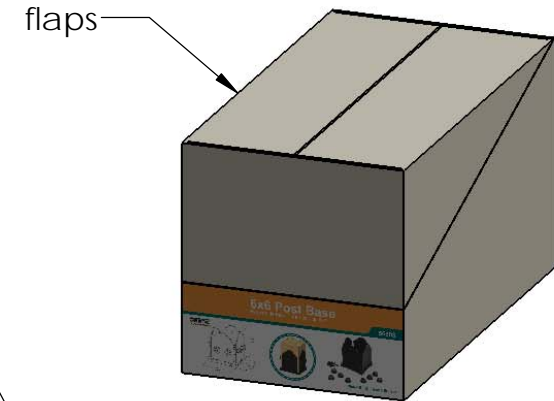
Last updated: 7/13/2015

56608-10

Product & Packaging Specs

Case, 6x6 Post Base Box

Item #: 6x6



Weight: 0.99 LBS
Scale: 1:4
Last updated: 7/13/2015

56608-10

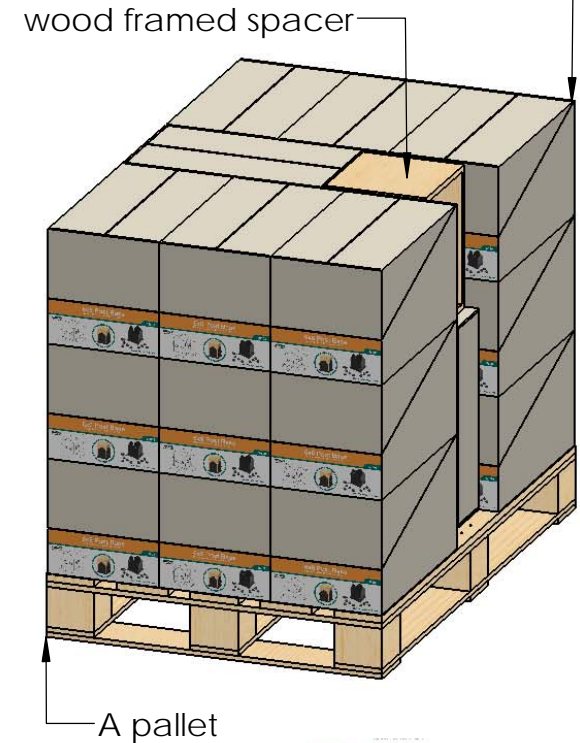
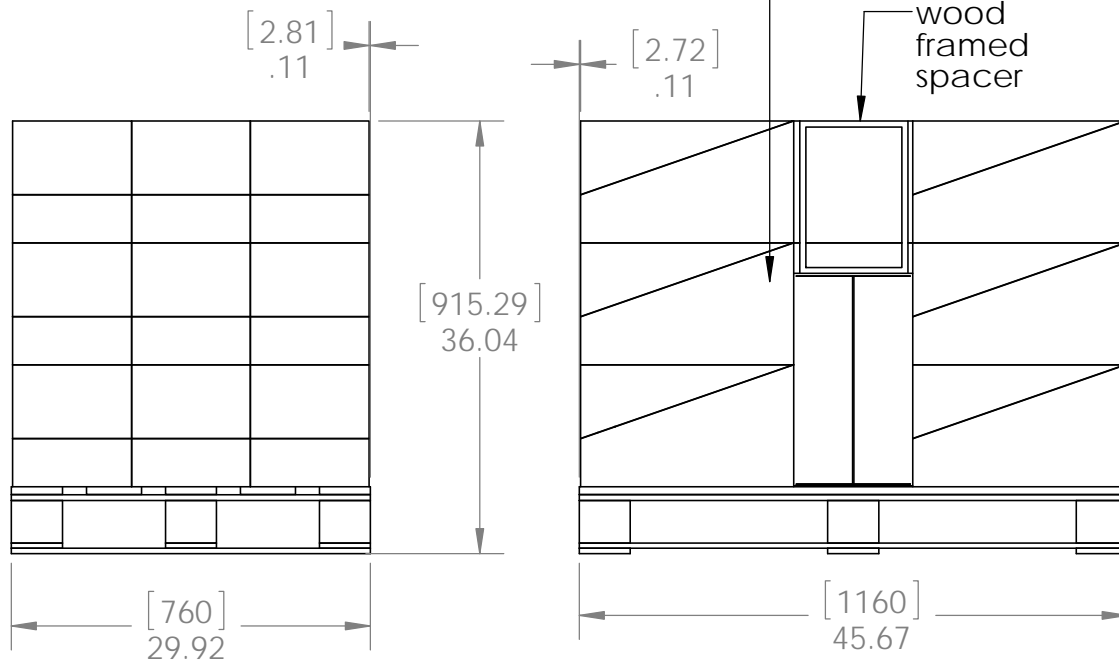
Product & Packaging Specs

56608 Packing

Item #: Pallet packing

Item #: **56608** | **6x6-PB-LS**
6X6 Post Base
PALLET **88 pcs**
SKU#: 56808
Weight: 938 lbs
LOT# **Priority#** **OWT**

Total number of cases: 22
 Total number of pieces:
 22x4=88 pieces on pallet



additional pallet packing instructions
 plywood on top layer
 strap to pallet
 clear wrap around boxes

Weight: 938 LBS
 Scale: 1:16
 Last updated: 7/13/2015

56608-10