



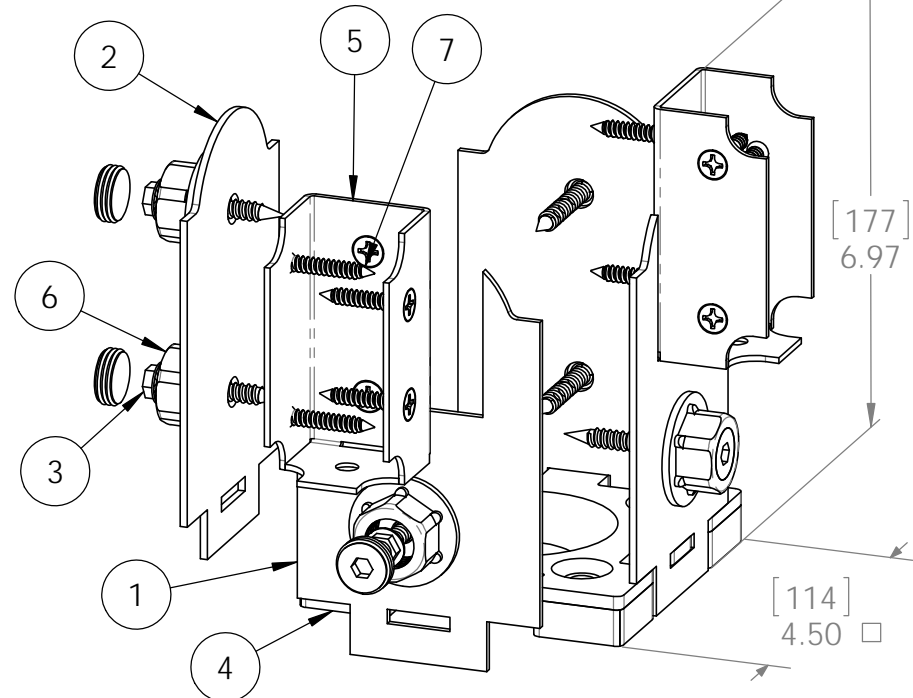
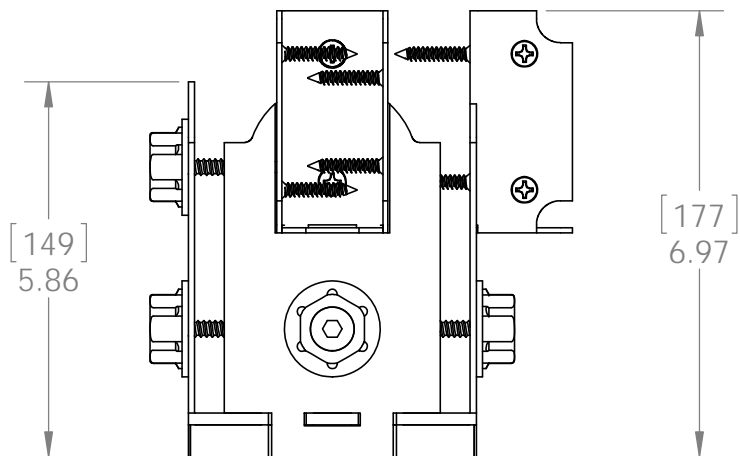
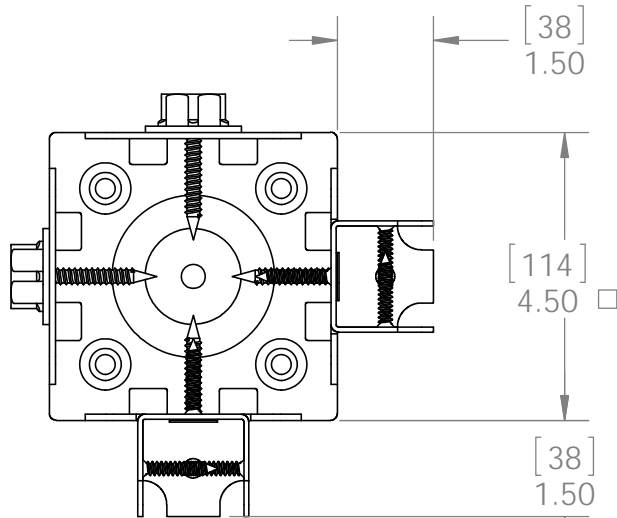
OZCO BUILDING PRODUCTS

Product & Packaging Specs

Assembly, 4x4 Twin Rail Saddle

Item #: 56630

ITEM NO.	QTY.	PART NUMBER	DESCRIPTION
1	2	56630-11	Plate, 4x4 Rail Saddle
2	2	56607-15	Plate, 4x4 Side Compression
3	6	56625	OWT Timber Screw 1-3/4"
4	1	56607-11	Assembly, 4x4 Stand Off
5	2	56641-12	Bracket, 2x4 Top Rail Saddle
6	6	56621	1 1/2" Hex Cap Nut
7	12	80014	Screw, FHP #12 X 1.25", Black



Weight: 4.01 LBS
 Scale: 1:2
 Last updated: 7/14/2015

56630-10

V1.00 - Installation Instructions effective May 1, 2015 and reflects information that available as of April 10, 2014. This information is updated periodically and should not be relied upon after May 1, 2015. Please visit www.OZCOBP.com to get current information

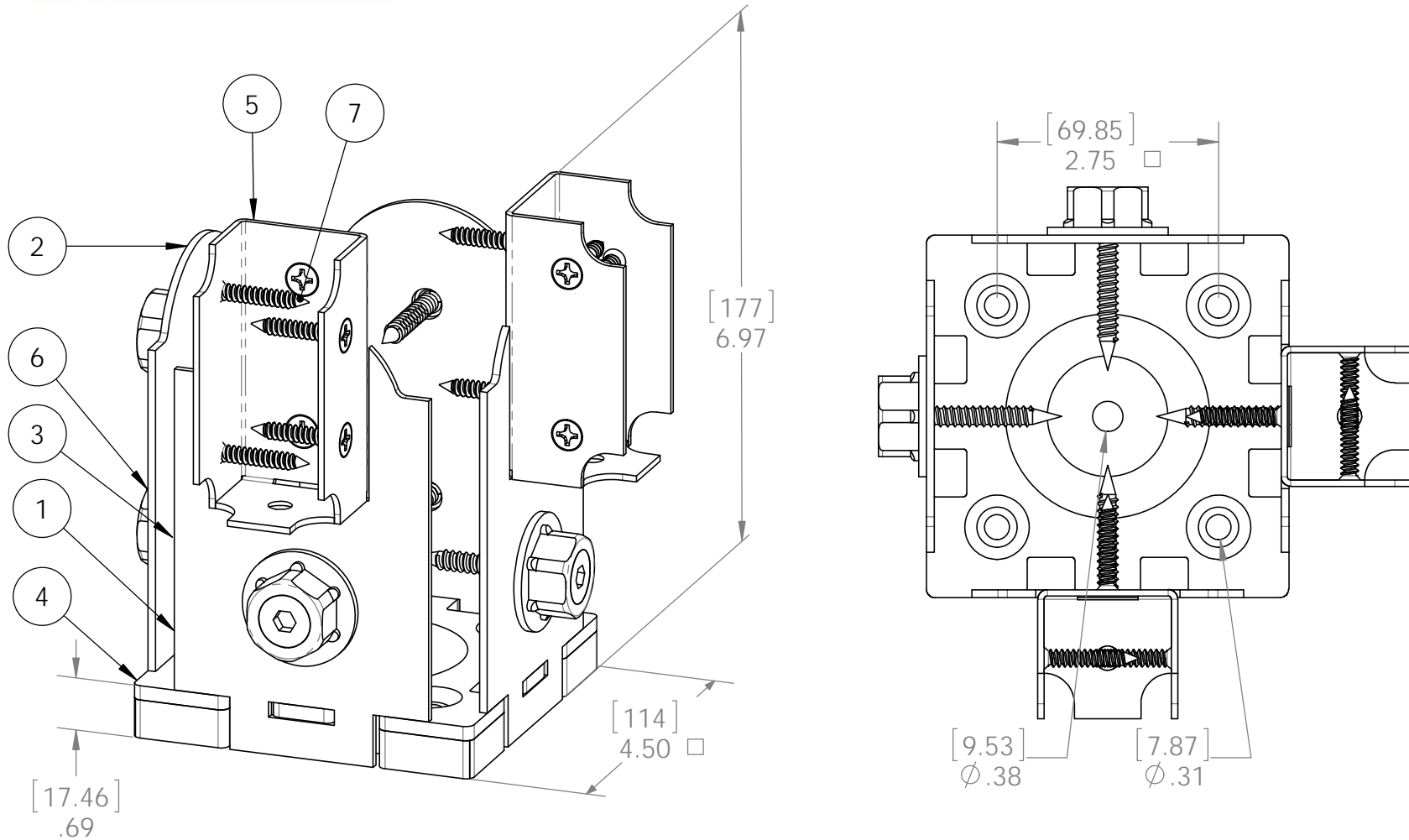


OZCO BUILDING PRODUCTS

Product & Packaging Specs

Assembly, 4x4 Twin Rail Saddle

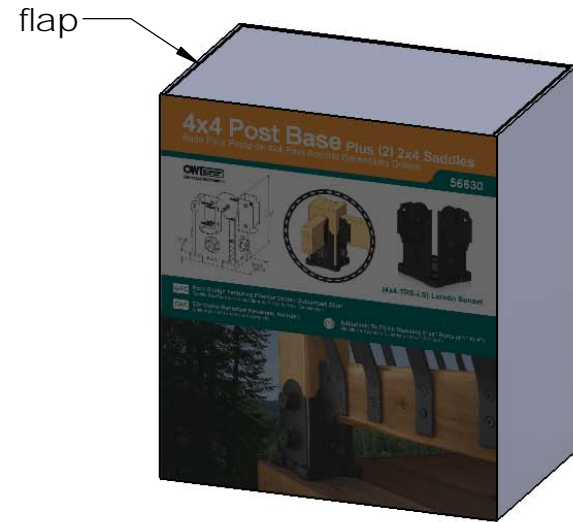
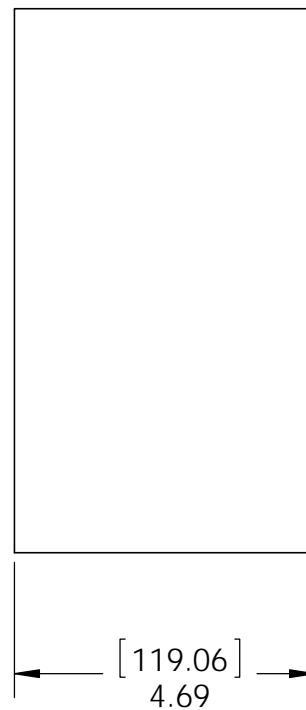
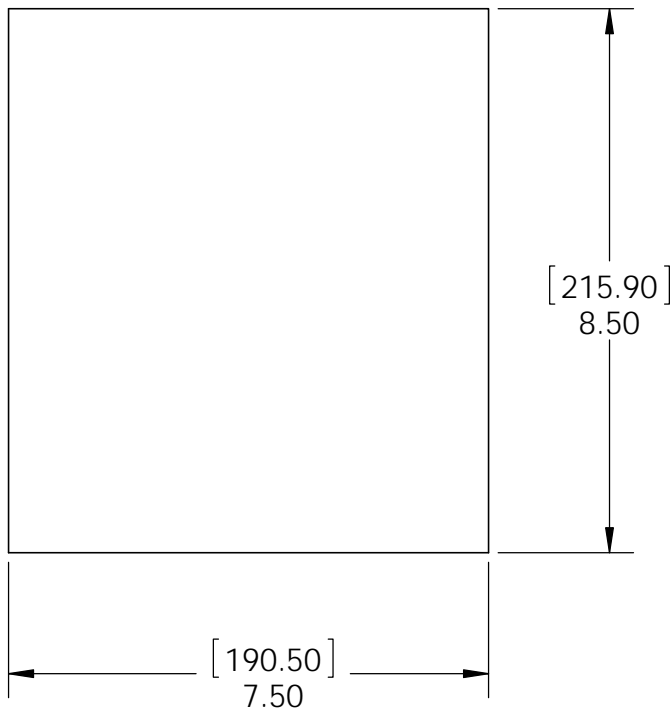
Item #: 56630



Weight: 4.01 LBS
Scale: 1:2
Last updated: 7/14/2015

56630-10

V1.00 - Installation Instructions effective May 1, 2015 and reflects information that available as of April 10, 2014. This information is updated periodically and should not be relied upon after May 1, 2015. Please visit www.OZCOBP.com to get current information



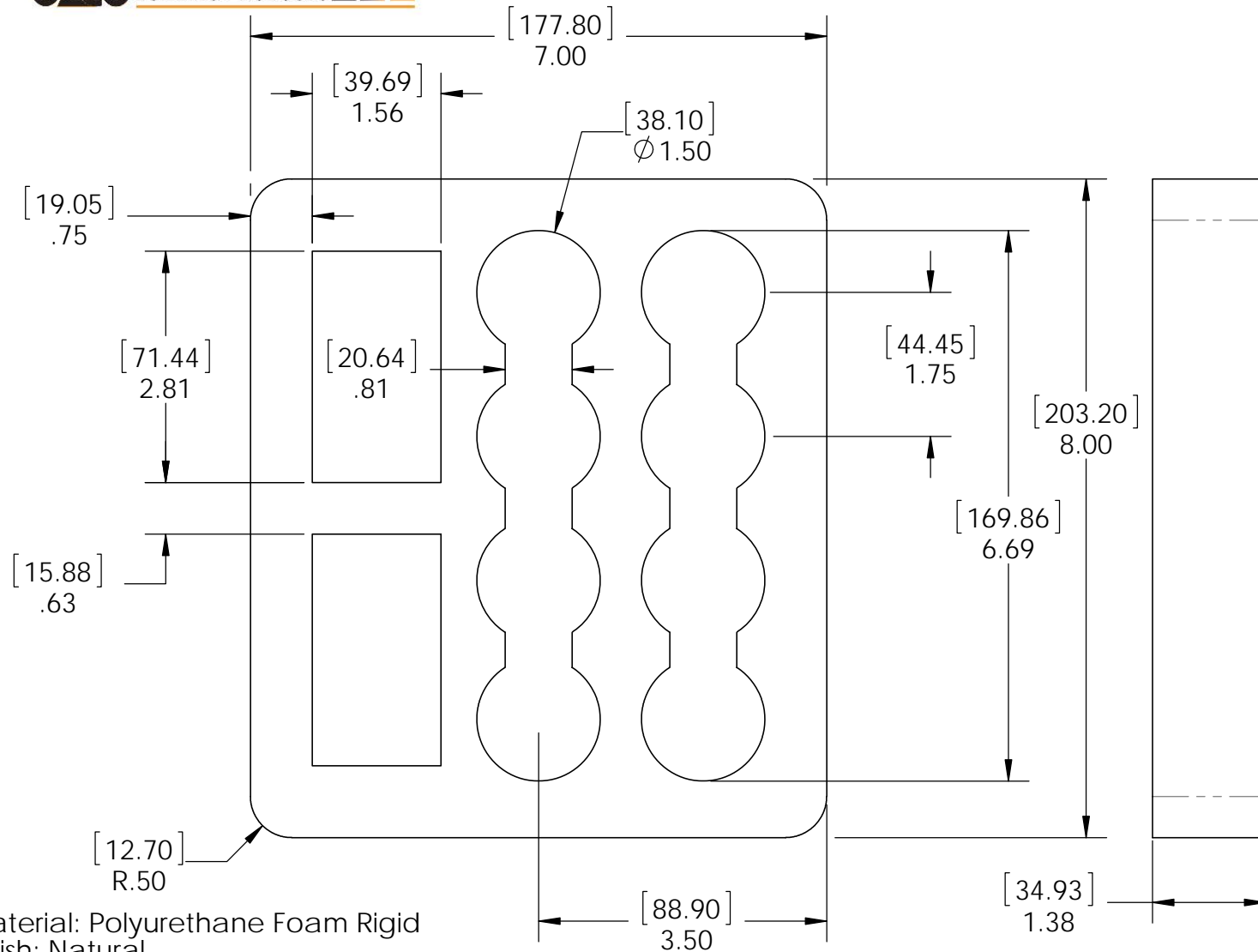
Material: Corrugated Paper
 Finish: See Artwork
 Weight: 0.12 LBS
 Scale: 1:3
 Last updated: 7/14/2015

56630-10

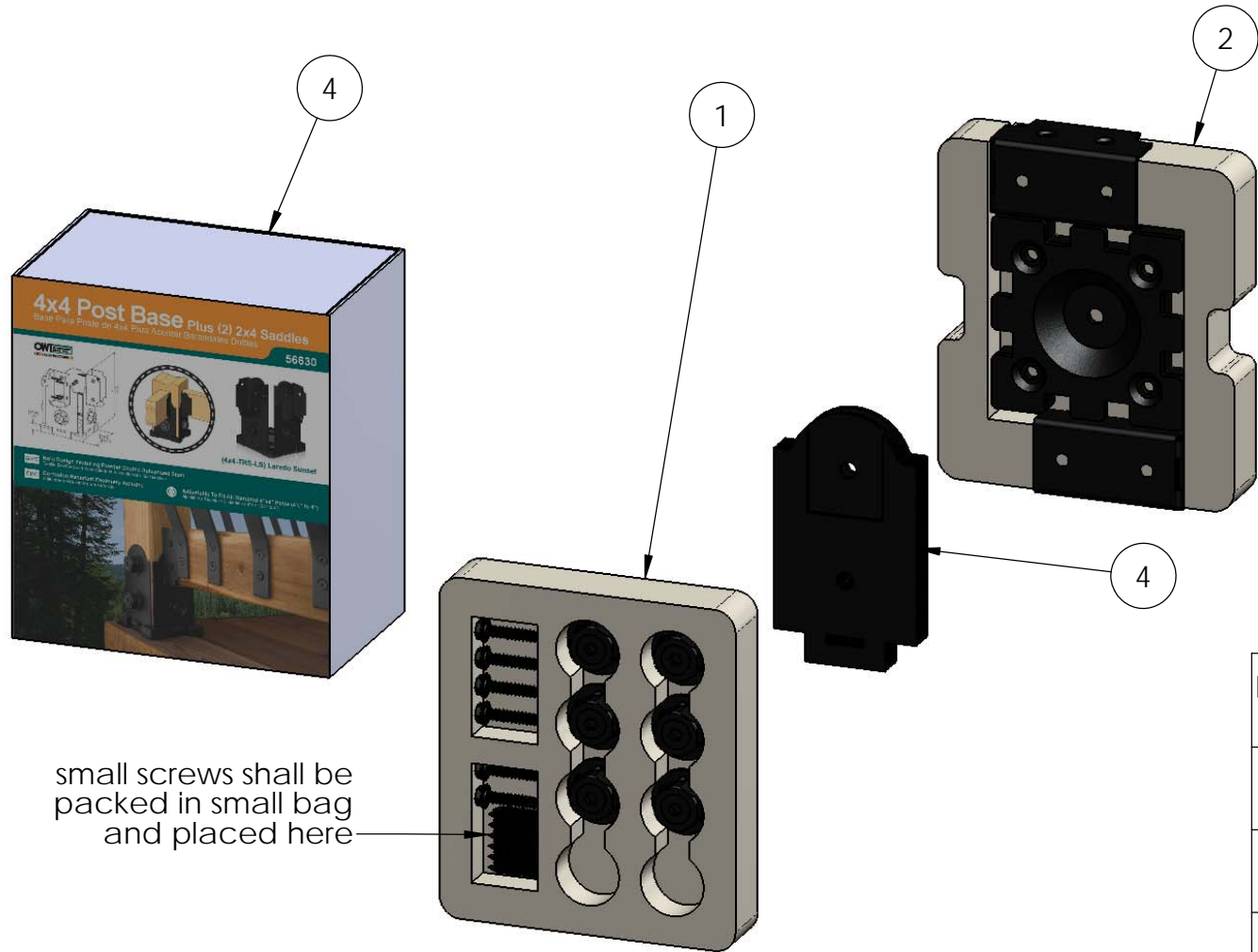
Product & Packaging Specs

Insert, Rail Saddle

Item #: Insert #1



Material: Polyurethane Foam Rigid
 Finish: Natural
 Weight: 0.33 LBS
 Scale: 1:2
 Last updated: 7/14/2015



small screws shall be packed in small bag and placed here

ITEM NO.	QTY.	PART NUMBER	DESCRIPTION
1	1	Insert, Rail Saddle	Insert, Rail Saddle
2	1	Insert, Rail Saddle	Insert, Rail Saddle
3	1	56630-10	Assembly, 4x4 Twin Rail Saddle
4	1	Box, 56630	Box, 56630

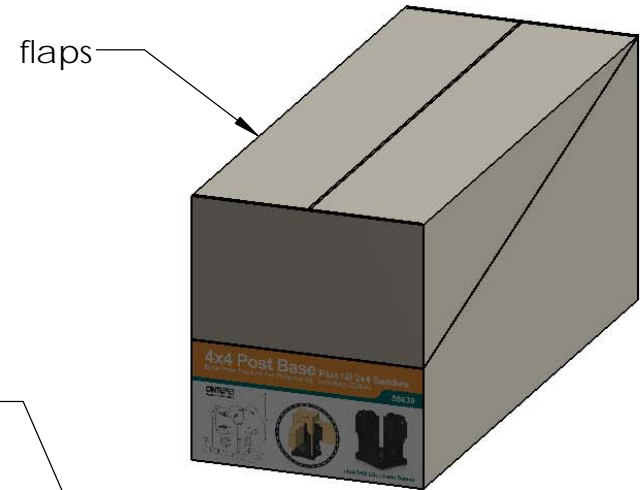
Weight: 8.80 LBS
 Scale: 1:4
 Last updated: 7/14/2015

56630-10

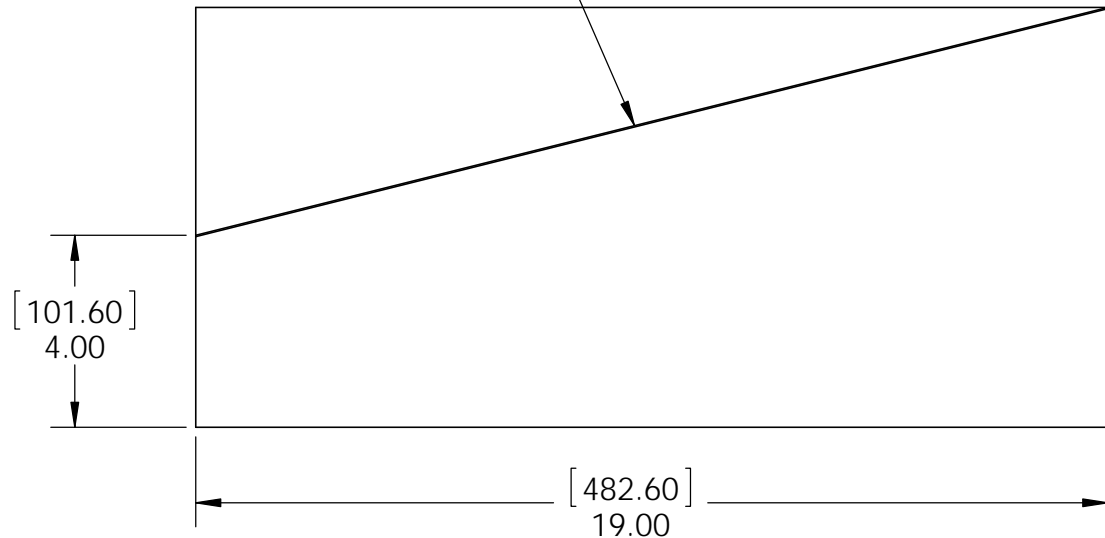
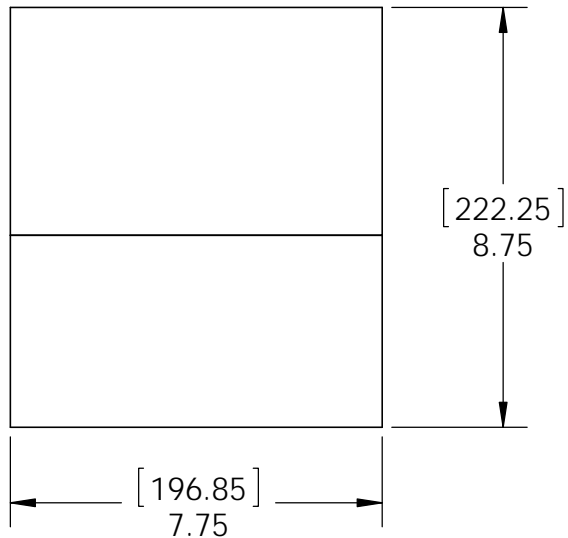
Product & Packaging Specs

Case, Rail Saddle

Item #: Case



artwork
cutline
3 sides

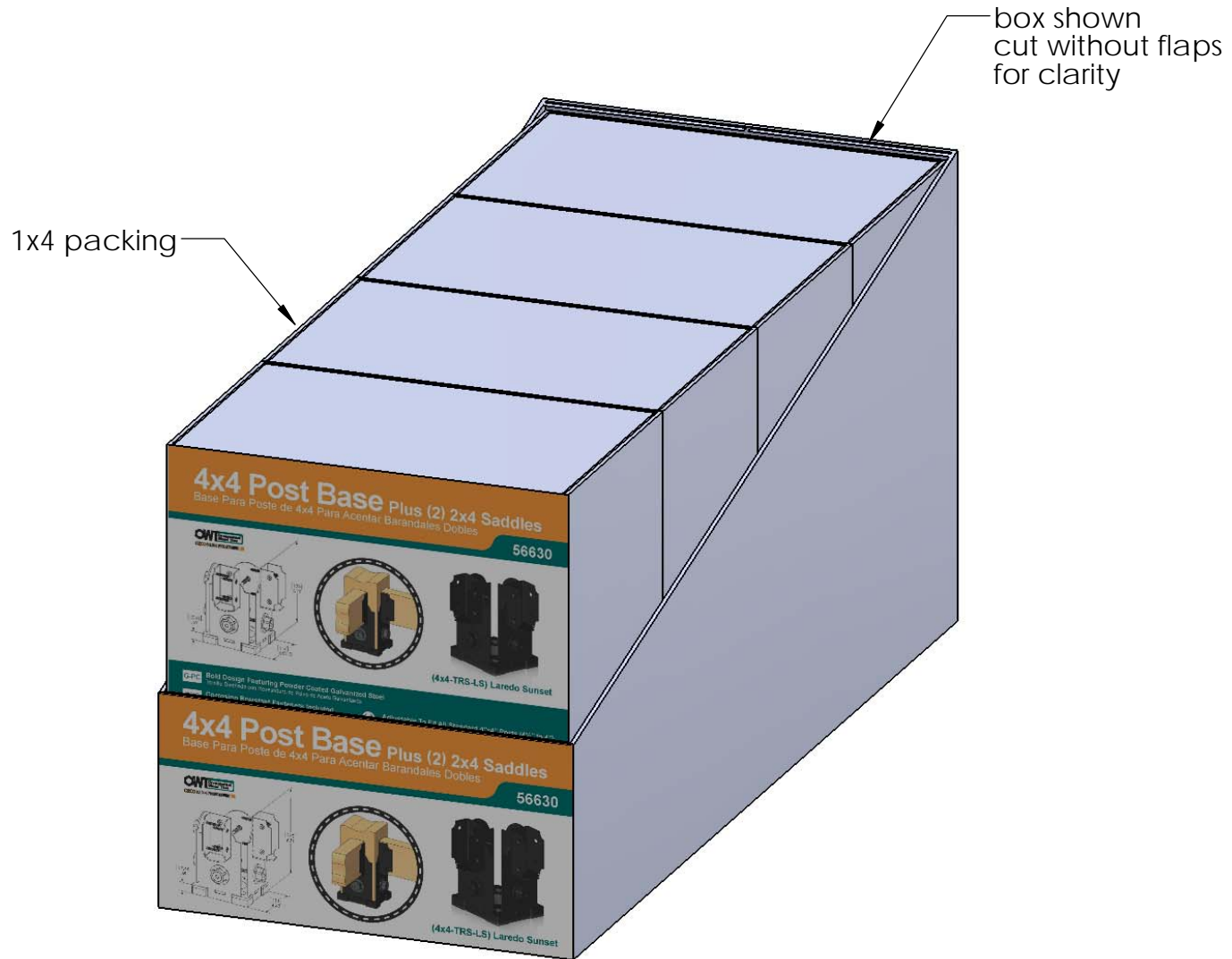


Material: Corrugated Paper
 Finish: Natural
 Weight: 0.22 LBS
 Scale: 1:4
 Last updated: 7/14/2015

56630-10

Product & Packaging Specs

56630 Packing
 Item #: Case packing



Weight: 19.44 LBS
 Scale: 1:3
 Last updated: 7/14/2015

56630-10



OZCO BUILDING PRODUCTS

Product & Packaging Specs

56630 Packing

Item #: Pallet packing

Item #: **56630** | **4x4-TRS-LS**

4x4 Post Base Plus (2) 2x4 Saddles

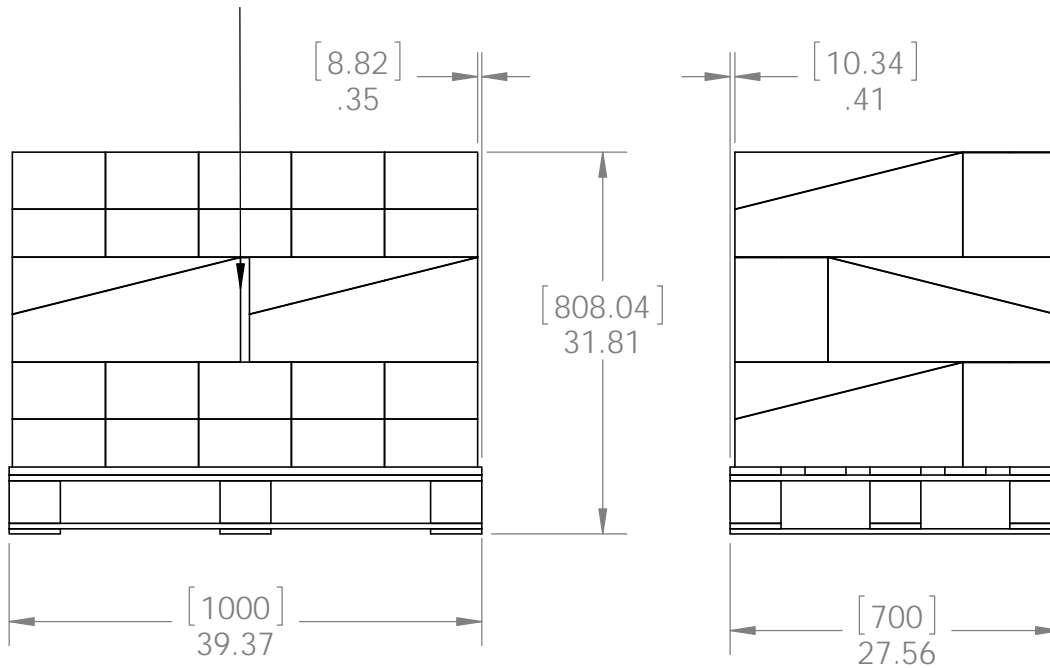
PALLET **84 pcs**

SKU#: **56830**

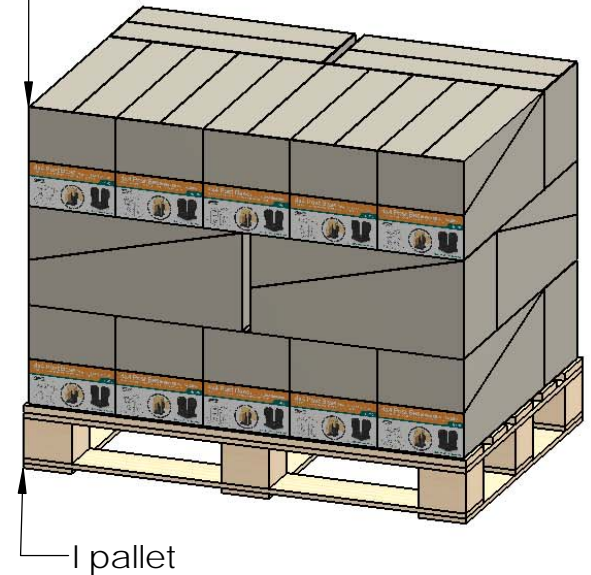


Weight: 447 lbs

LOT# Priority# OWT OZCO BUILDING PRODUCTS



Total number of cases: 21
Total number of pieces:
21x4=84 pieces on pallet



additional pallet packing instructions

- plywood on top layer
- strap to pallet
- clear wrap around boxes

Weight: 447 LBS
Scale: 1:16
Last updated: 7/14/2015

56630-10