

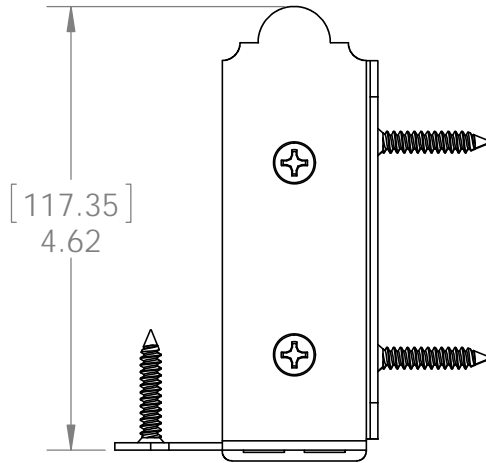
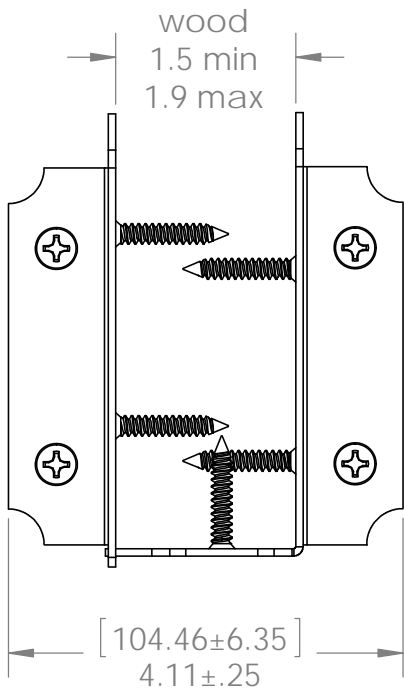
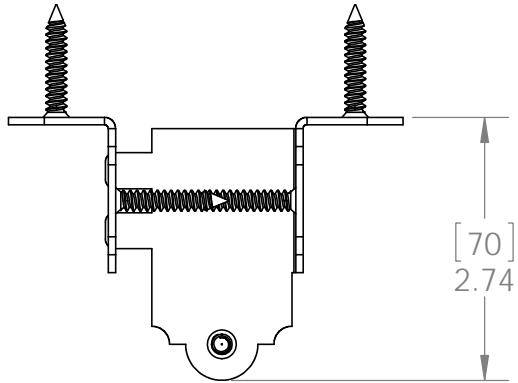


OZCO BUILDING PRODUCTS

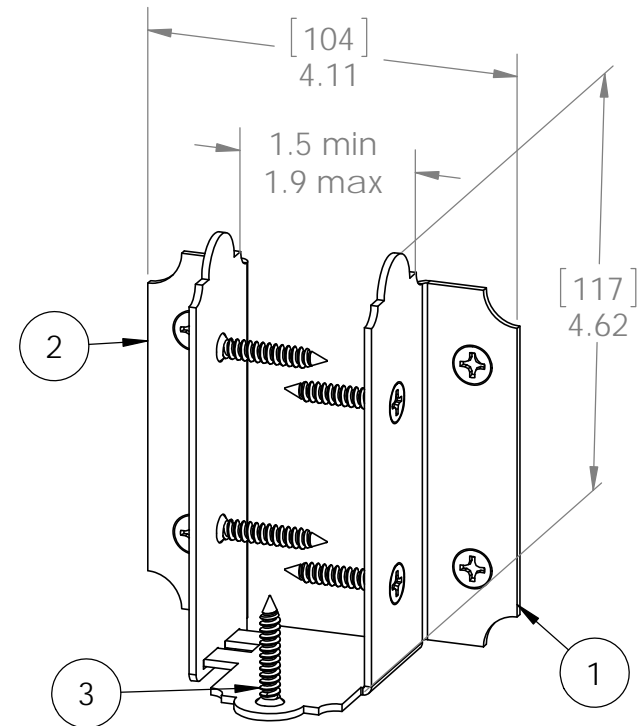
Product & Packaging Specs

6-8" Joist Hanger Flush

Item #: 56639



ITEM NO.	QTY.	PART NUMBER	DESCRIPTION
1	1	56639-11	56639 PART A
2	1	56639-12	56639 Part B
3	9	80014	Screw, FHP #12 X 1.25", Black



Weight: 0.54 LBS
 Scale: 1:2
 Last updated: 7/13/2015

56639-10

revision B corrects #10 screws to #12

V1.00 - Installation Instructions effective May 1, 2015 and reflects information that available as of April 10, 2014. This information is updated periodically and should not be relied upon after May 1, 2015. Please visit www.OZCOBP.com to get current information

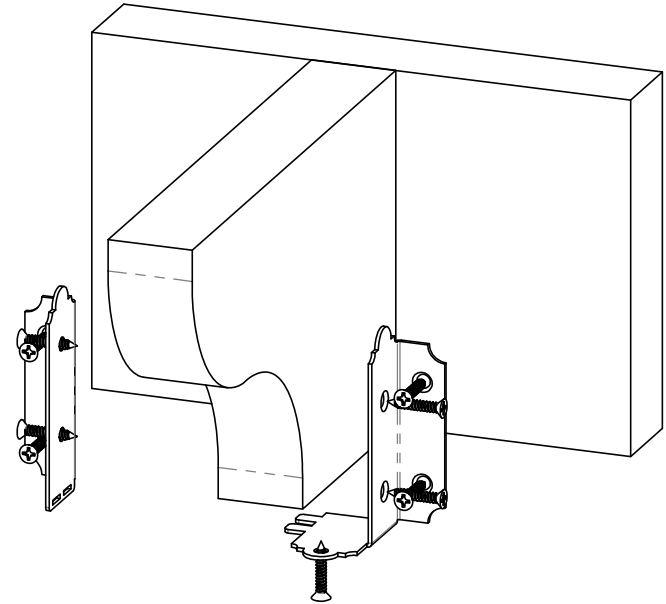
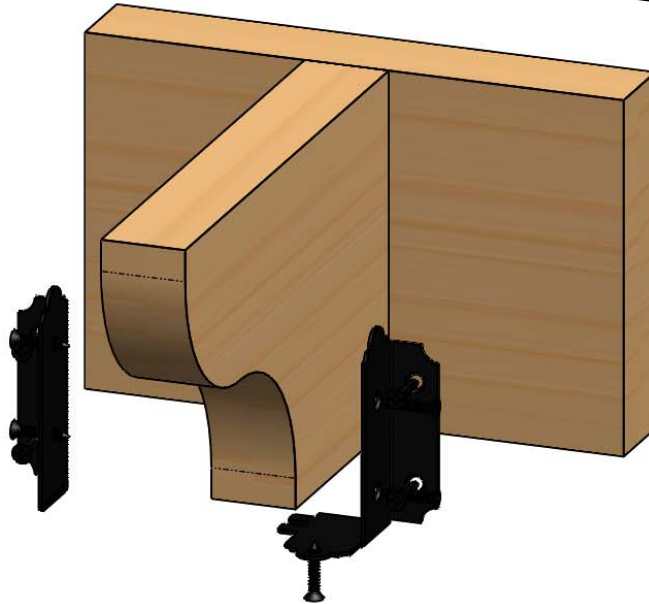
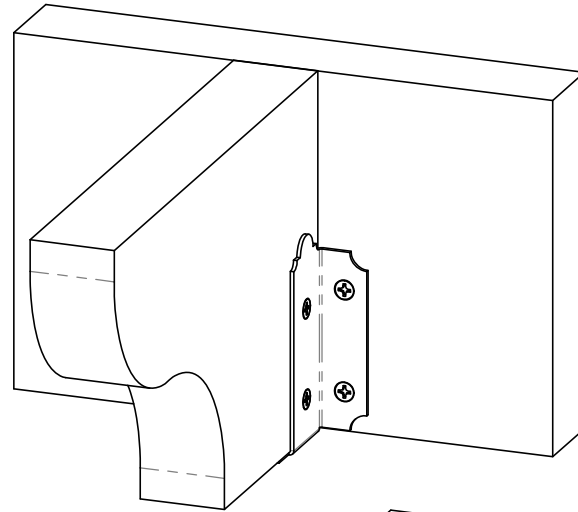
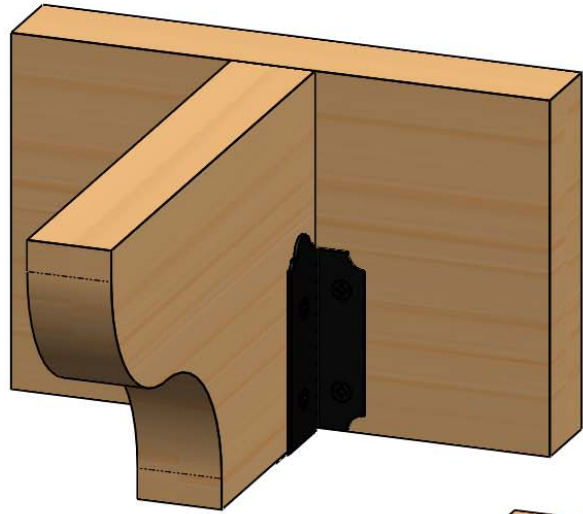


OZCO BUILDING PRODUCTS

Product & Packaging Specs

6-8" Joist Hanger Flush

Item #: 56639



Weight: 0.54 LBS
Scale: 1:4
Last updated: 7/13/2015

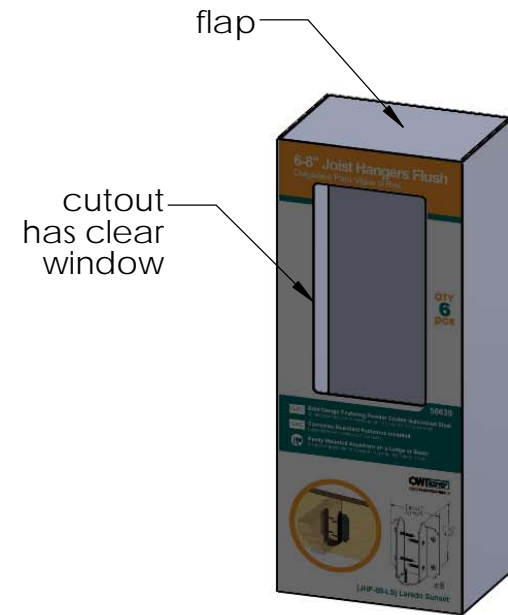
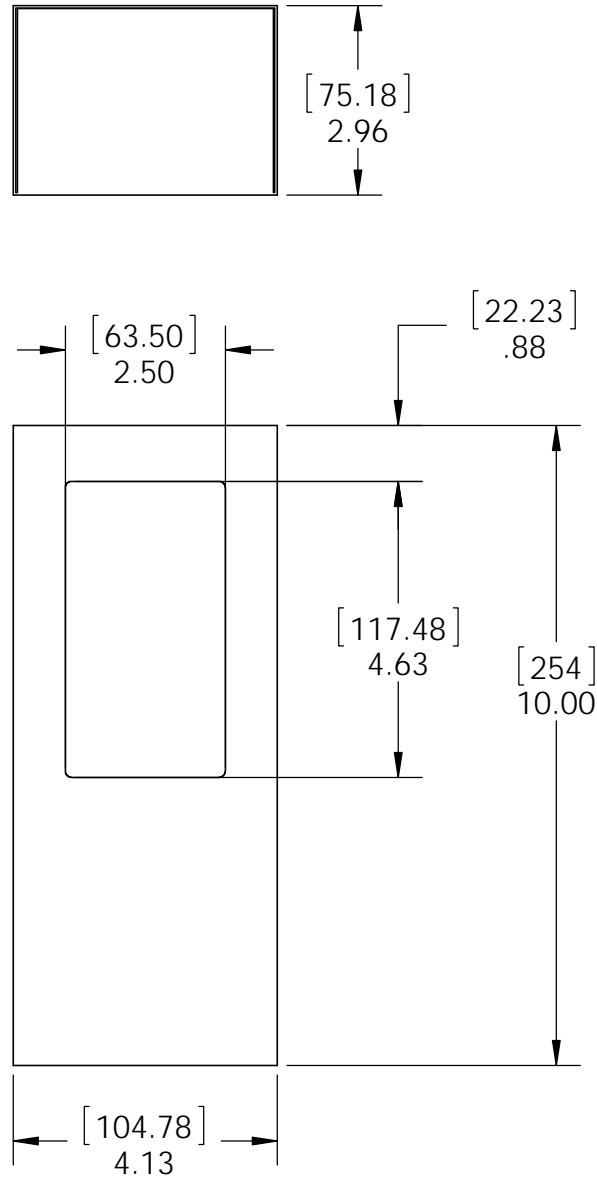
56639-10

V1.00 - Installation Instructions effective May 1, 2015 and reflects information that available as of April 10, 2014. This information is updated periodically and should not be relied upon after May 1, 2015. Please visit www.OZCOBP.com to get current information

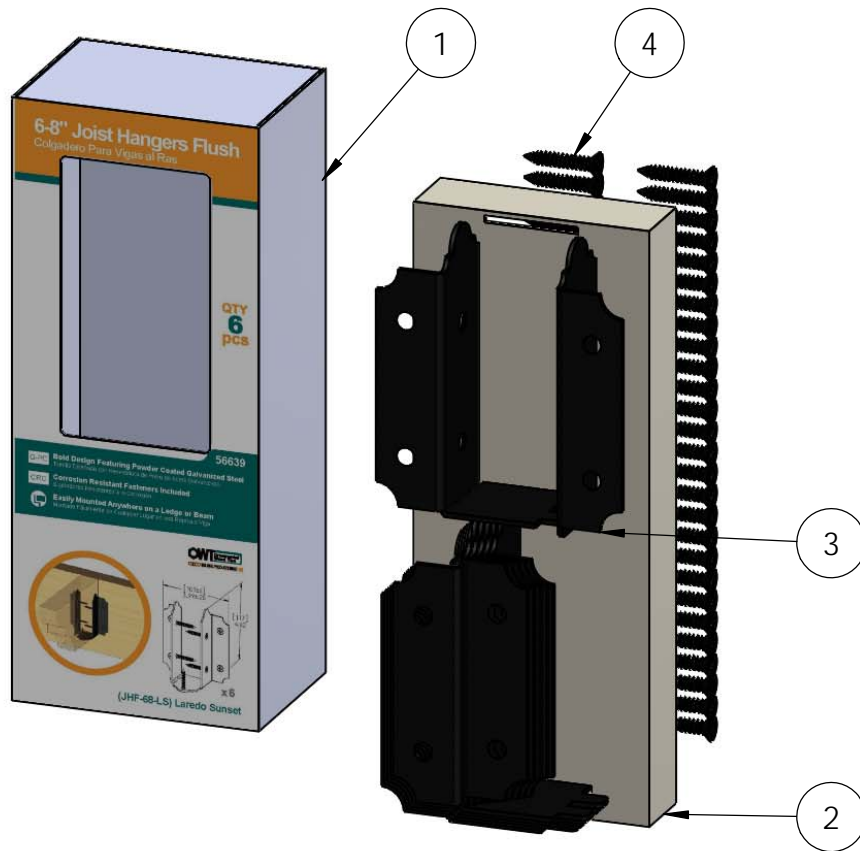
Product & Packaging Specs

Box, 6-8" Joist Hanger

Item #: Box



Material: Corrugated Paper
 Finish: See Artwork
 Weight: 0.03 LBS
 Scale: 1:3
 Last updated: 7/13/2015



ITEM NO.	QTY.	PART NUMBER	DESCRIPTION
1	1	56639 Box	Box, 6-8" Joist Hanger
2	1	56639 Box Insert	Joist Hanger Box Insert
3	6	56639-10	6-8" JOIST HANGER FLUSH
4	54	80014	Screw, FHP #12 X 1.25", Black

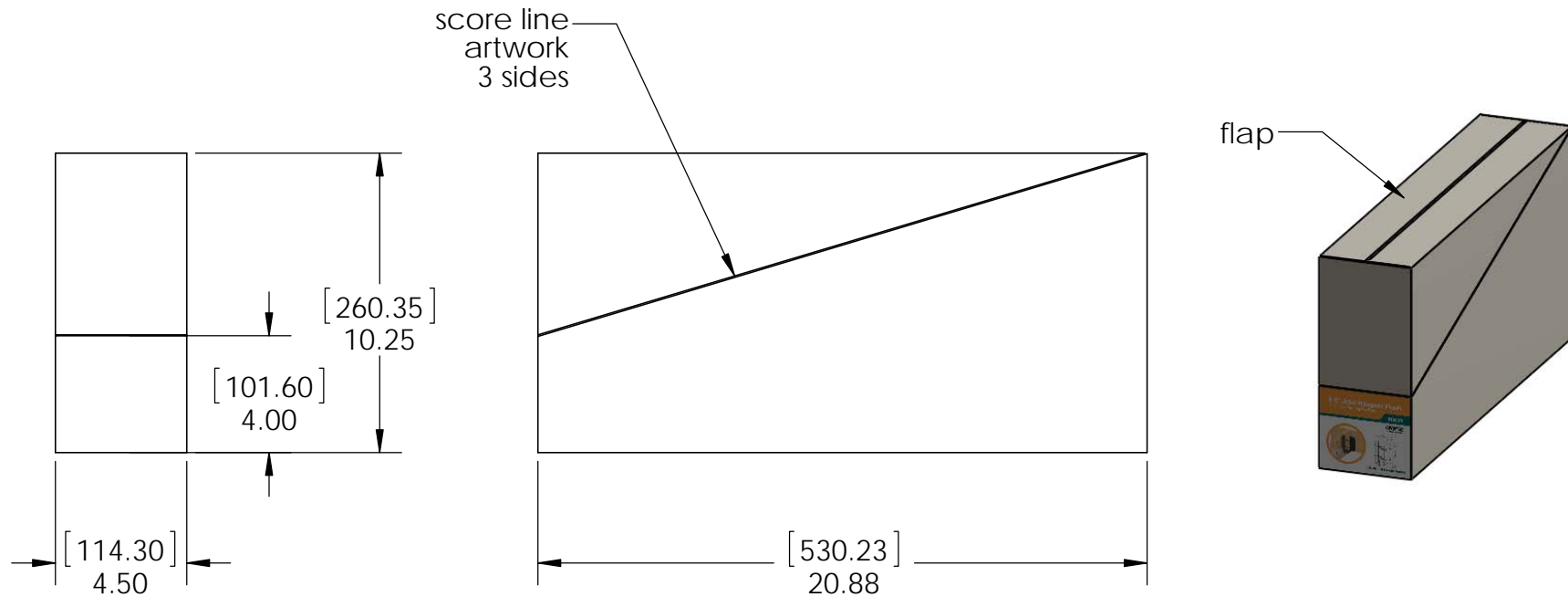
Screws placed inside a small plastic bag and placed inside each box

Weight: 7.03 LBS
 Scale: 1:3
 Last updated: 7/13/2015

56639-10

revision B corrects #10 screws to #12

V1.00 - Installation Instructions effective May 1, 2015 and reflects information that available as of April 10, 2014. This information is updated periodically and should not be relied upon after May 1, 2015. Please visit www.OZCOBP.com to get current information

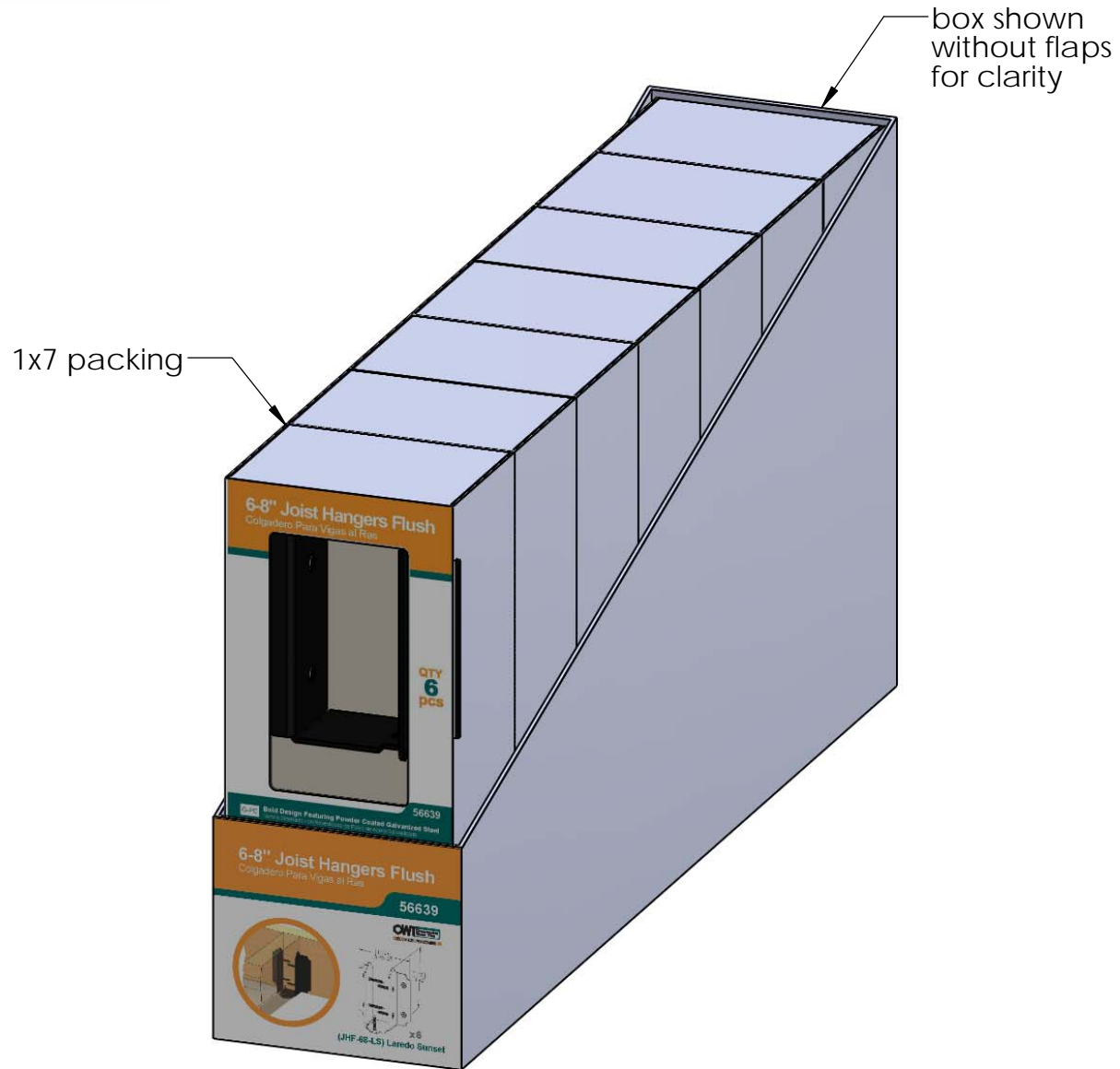


Weight: 0.20 LBS
 Scale: 1:6
 Last updated: 7/13/2015

Product & Packaging Specs

56639 Packing

Item #: Case Packing



Weight: 28.10 LBS
 Scale: 1:3
 Last updated: 7/13/2015

56639-10



OZCO BUILDING PRODUCTS

Item #: **56639** | **JHF-68-LS**

6-8" Joist Hanger Flush LS

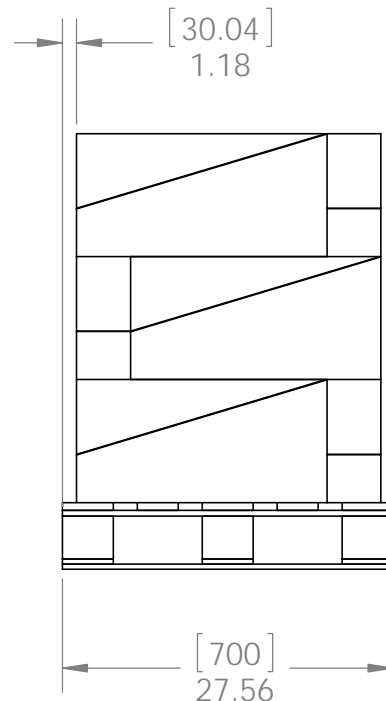
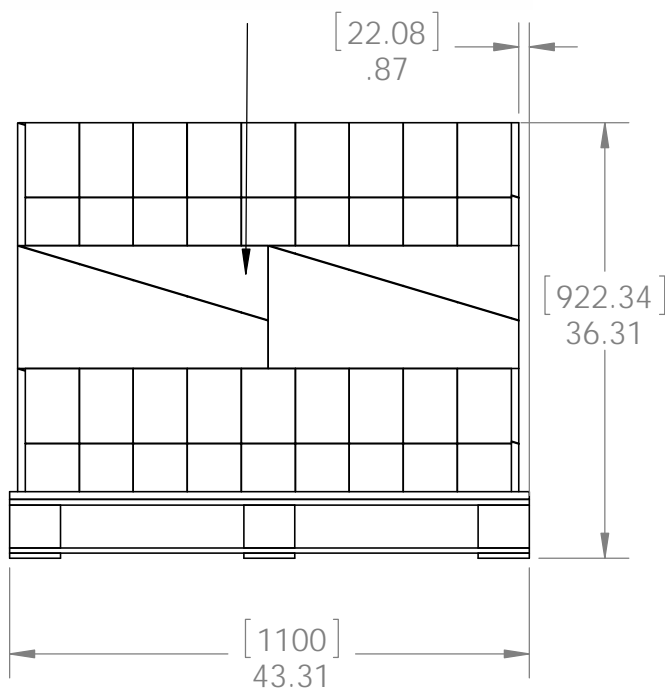
PALLET **231 pcs**

SKU#: **56839**



Weight: **959 lbs**

LOT# _____ Priority# _____

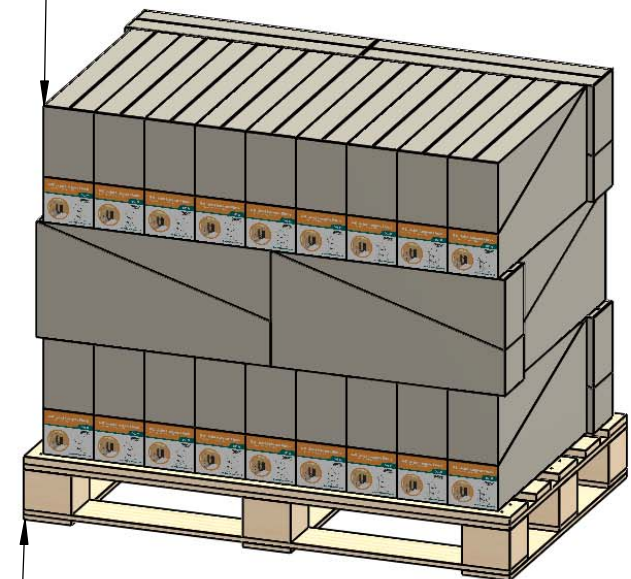


Product & Packaging Specs

56639 Packing

Item #: Pallet Packing

Total number of cases: 33
Total number of pieces:
33x7=231 pieces on pallet



H pallet



additional pallet packing instructions

- plywood on top layer
- strap to pallet
- clear wrap around boxes

Weight: 959 LBS
Scale: 1:2
Last updated: 7/13/2015

56639-10

V1.00 - Installation Instructions effective May 1, 2015 and reflects information that available as of April 10, 2014. This information is updated periodically and should not be relied upon after May 1, 2015. Please visit www.OZCOBP.com to get current information