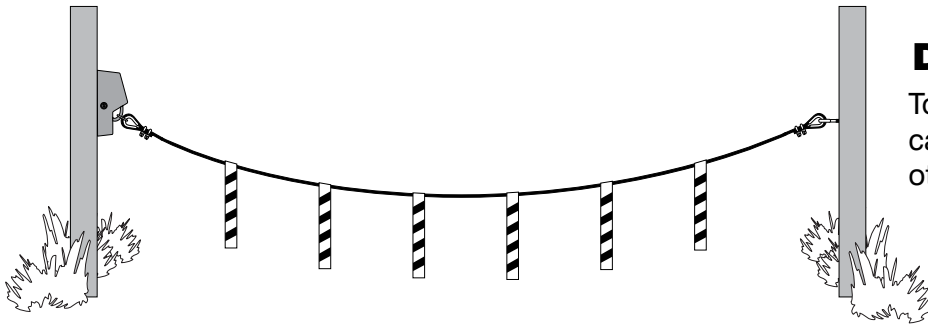




Cable/Gate Lock

INSTALLATION MANUAL

This convenient battery powered wireless lock has many uses, including; multiple user access to property, securing items such as boats or trailers and anything else secured with a chain or cable.

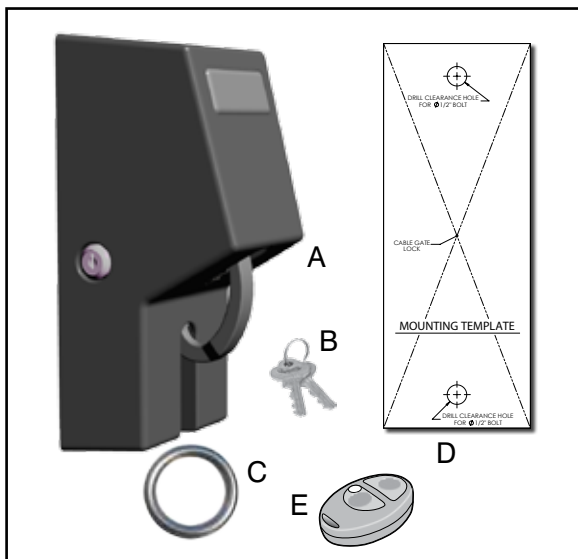
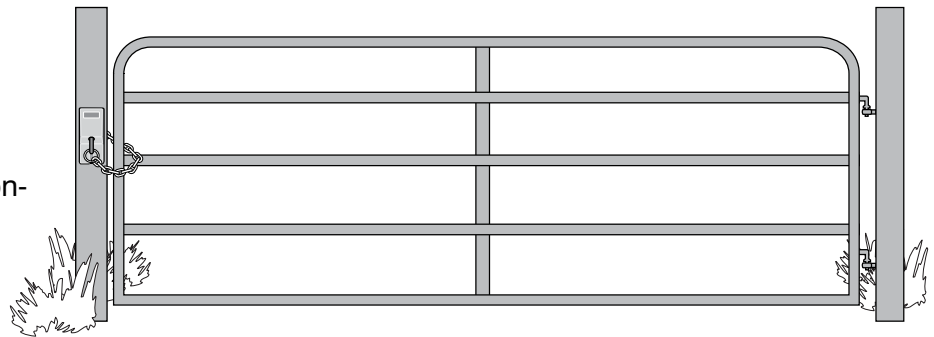


Driveway Cable Lock

To use as a lock for driveway cable, mount lock on post facing other driveway post as illustrated.

Gate Chain Lock

To use as a lock for gate chain, mount lock on outside face of non-hinge post as illustrated.



Kit Includes:

- A. Lock (1)
- B. Keys (2)
- C. Cable/Chain Ring (1)
- D. Mounting Template (1)
- E. Remote Transmitter (1)

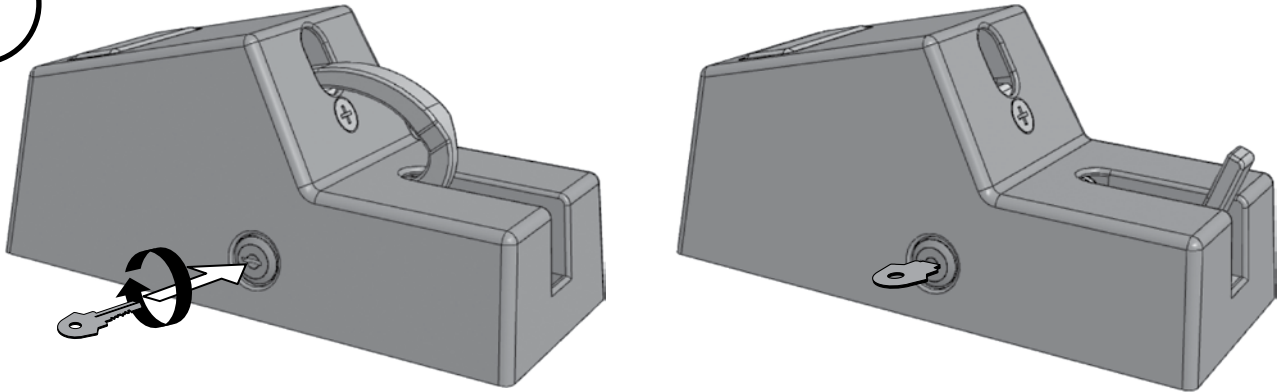
Items Required - not included:

1. (8) AA Batteries*
2. (2) 3/8" carriage bolts, (2) 3/8" nuts and (2) 3/8" washers (bolts should be 1/2" to 1" longer than thickness of gate post lock will be mounted to - bolts that protrude beyond 1" after installation will need to be cut off to avoid interference with latch)
3. Other hardware may be needed depending on type of cable, rope or chain being used. See EXAMPLES on page 6.

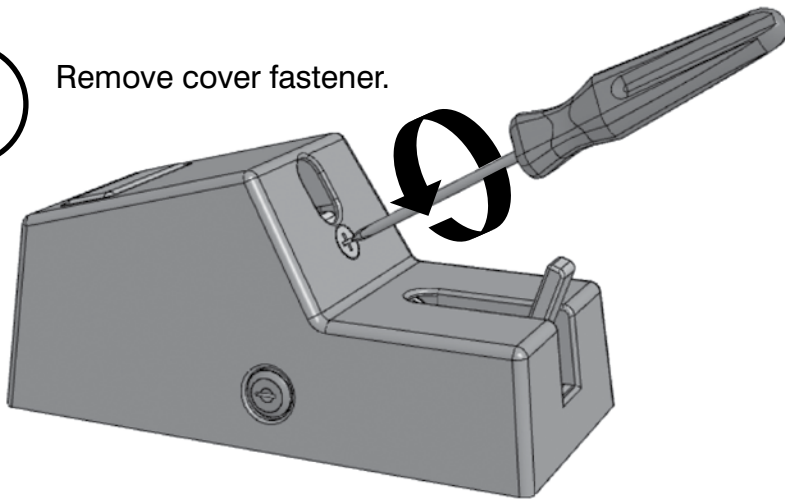
Gates that Open, LLC • 3121 Hartsfield Road • Tallahassee, Florida 32303
www.mightymule.com • 1-800-543-GATE (4283) • Technical Support 1-800-543-1236

STEP 1: Remove Lock Housing

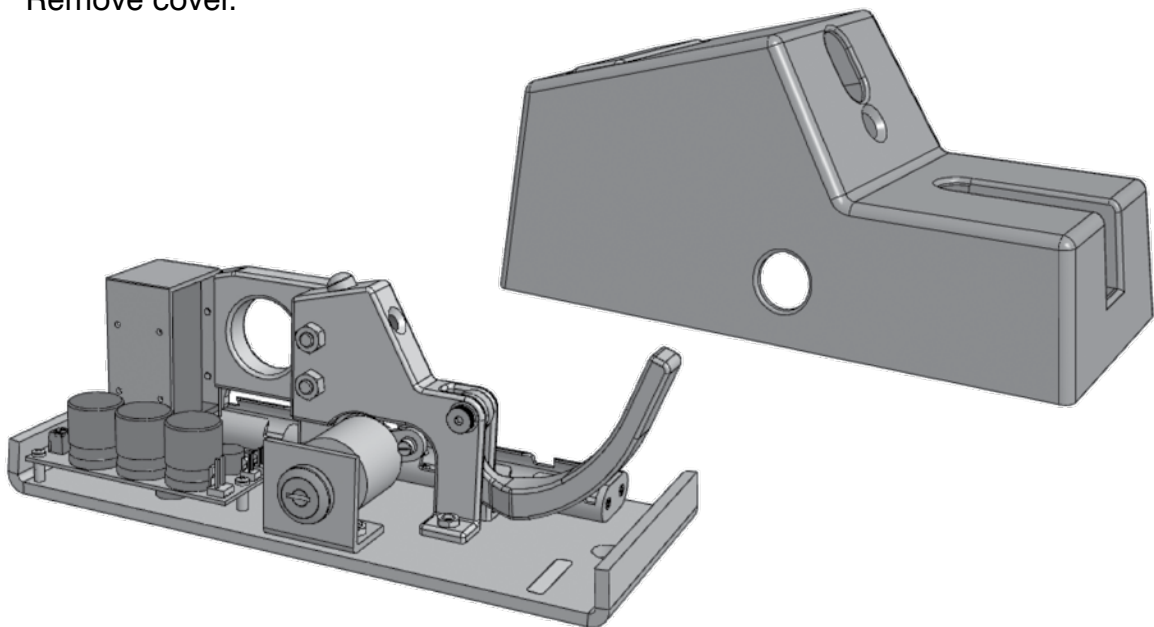
- 1** Place key in lock and turn clockwise disengaging cable hook.



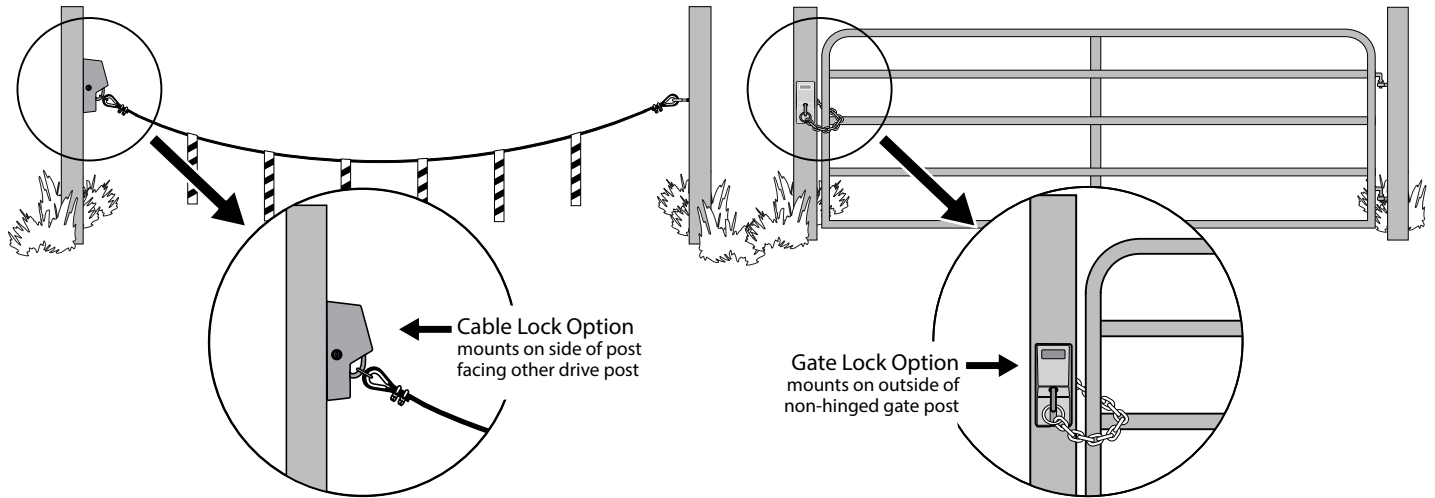
- 2** Remove cover fastener.



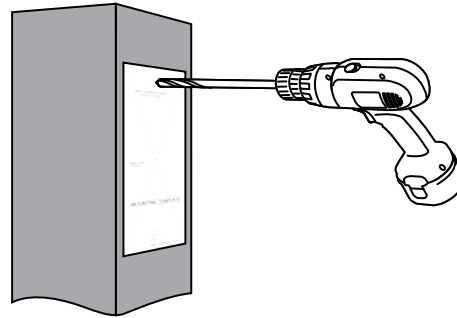
- 3** Remove cover.



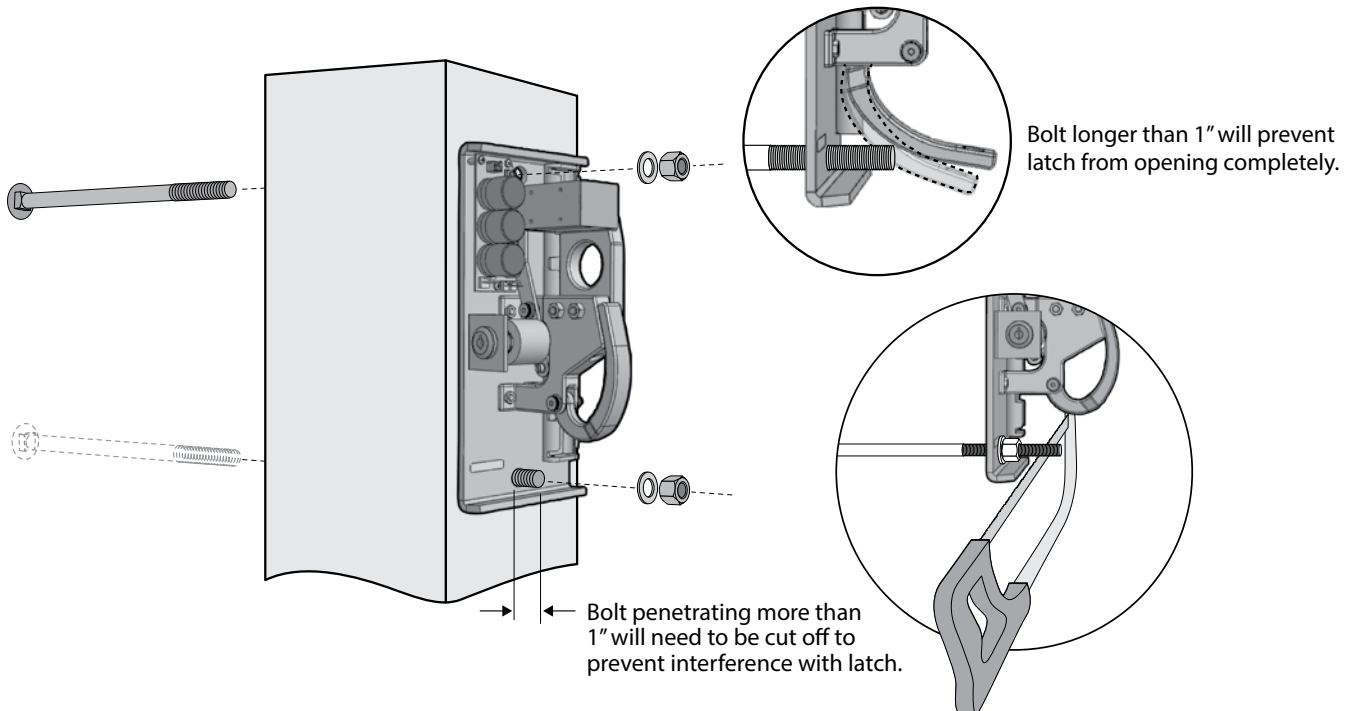
STEP 2: Attach Lock to Post



- 1** Affix included mounting template to post, and drill 3/8" holes through post.

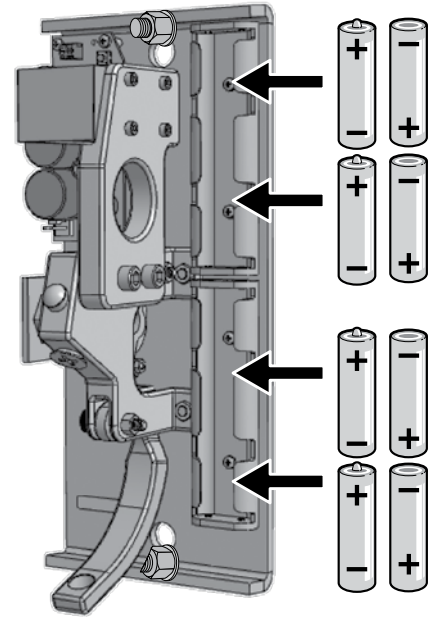


- 2** Use 3/8" carriage bolts washers and nuts to fasten lock to post. *Bolts should be 1/2" to 1" longer than thickness of gate post - bolts that protrude beyond 1" after installation will need to be cut off to avoid interference with latch.*



STEP 3: Install 8 AA Batteries

- 1** AA Battery Operating Temperature (Energizer™):
Alkaline: 0°F to 130°F
Lithium: -40°F to 140°F
Install the 8 AA batteries as shown.

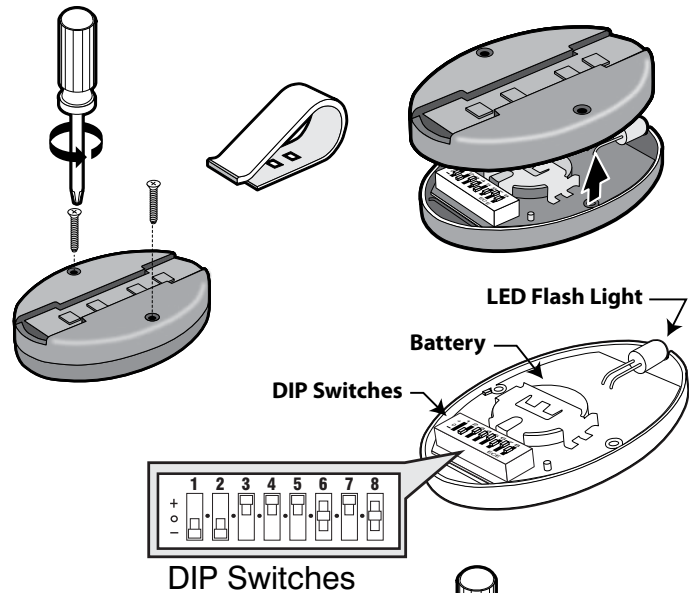


STEP 4: Setting Your Personal Code

All GTO transmitters are set to a standard settings and are ready to operate lock. For your safety and security, we strongly recommend replacing the factory setting with your own.

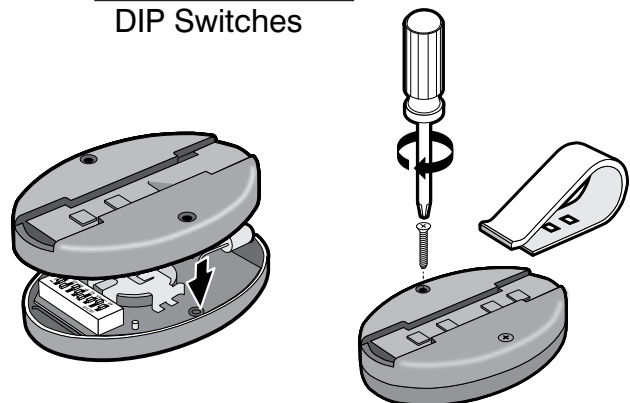
If you have additional transmitters, set all with the same setting (DIP switch settings).

- 1** Remove back cover of transmitter. Clip can be removed and oriented in either direction.



- 2** Use small screwdriver to move DIP switches to random positions, but not all in same position.

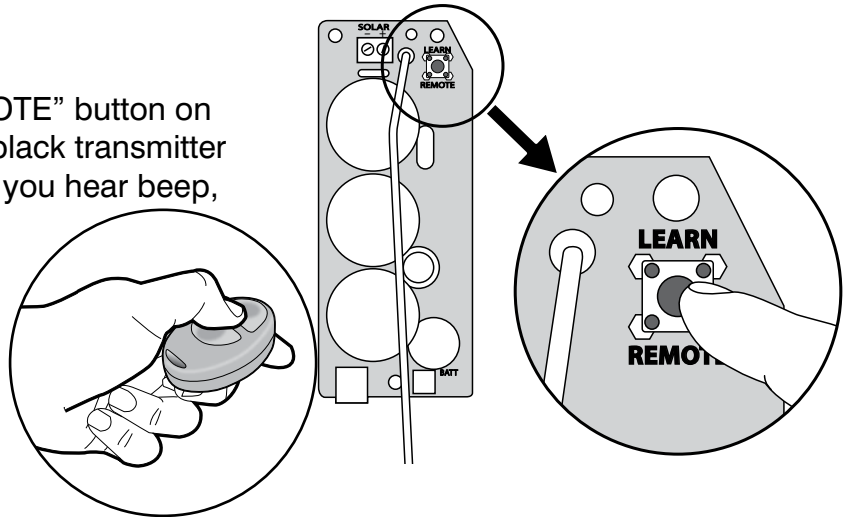
- 3** Replace cover and clip (if removed).



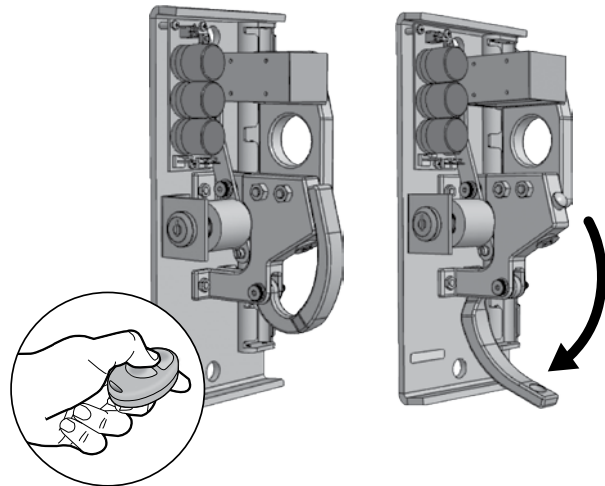
STEP 5: Learning the Transmitter

1 Press and hold “LEARN REMOTE” button on control board and one of the black transmitter buttons at the same time until you hear beep, then release.

2 Your personal transmitter code is now programmed in the lock with the transmitter button you chose.

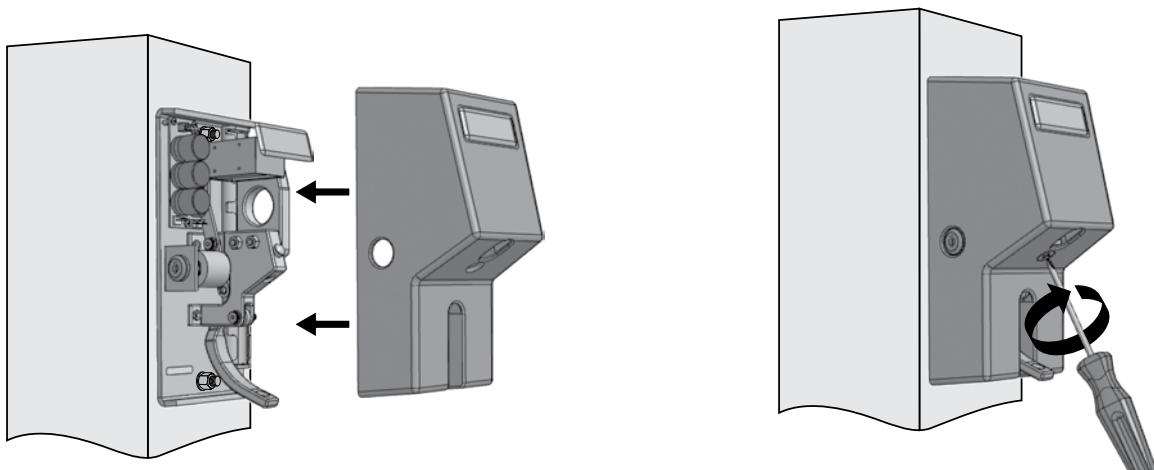


3 Test lock. Secure cable hook, press and hold transmitter button to ensure the cable hook releases.



STEP 6: Re-attach the Lock Housing

1 Replace lock housing and secure with housing screw.

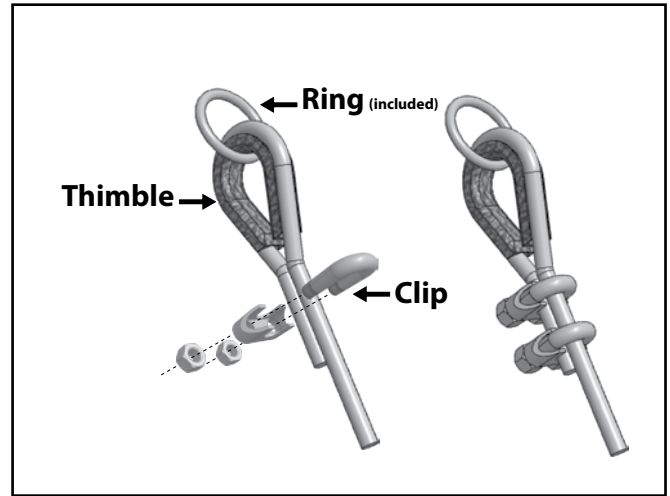
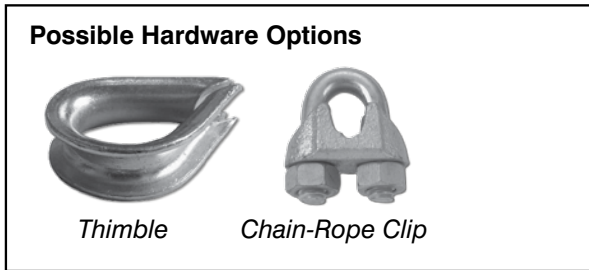


STEP 7: Attaching Lock Ring Examples

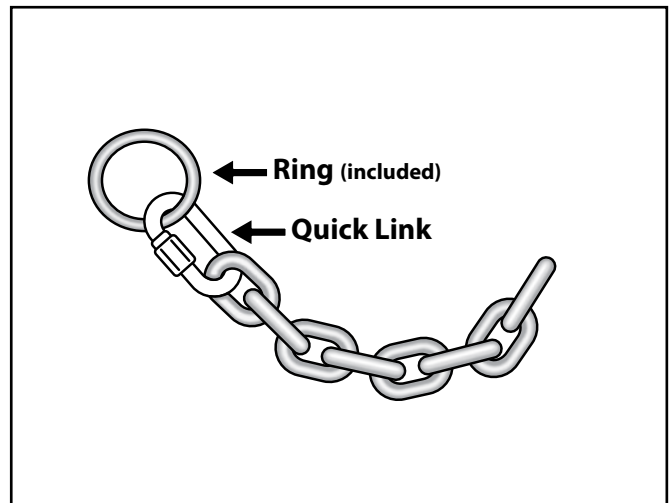
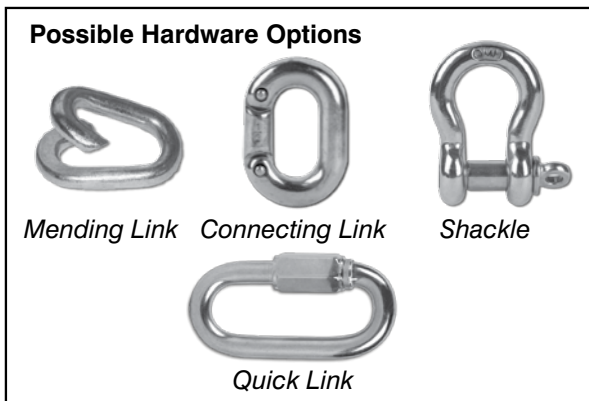
If using an existing cable, verify you have enough slack in cable to attach ring using directions below. Leave approximately 6 inches of slack for every 10 feet of cable..

If using new cable, attach ring to one end and attach other end to second post with secure mounting hardware, leaving approximately 6 inches of slack for every 10 feet of cable.

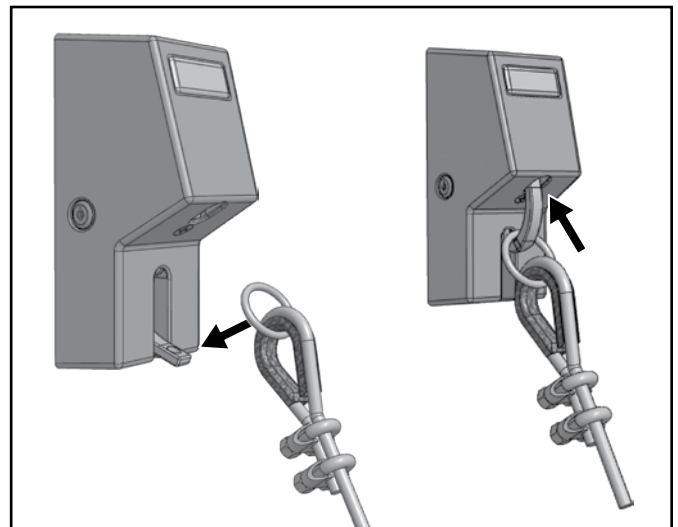
- 1** Attach cable or rope to ring (included) using optional hardware (not supplied).



- 2** Attach chain to ring (included) using optional hardware (not supplied).

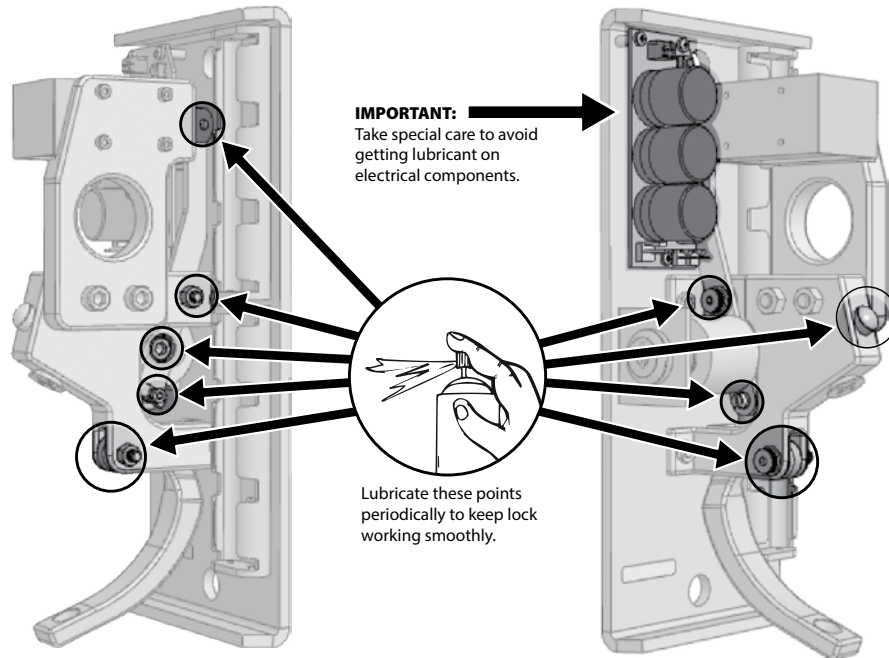


- 3** Place cable ring into lock hook and press hook upward until it locks into place.



Care and Maintenance

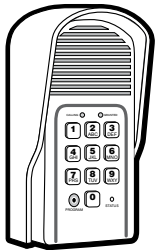
1. Periodically lubricate the illustrated points with silicon to keep the lock working smoothly.
2. Check and replace batteries if lock fails to disengage.



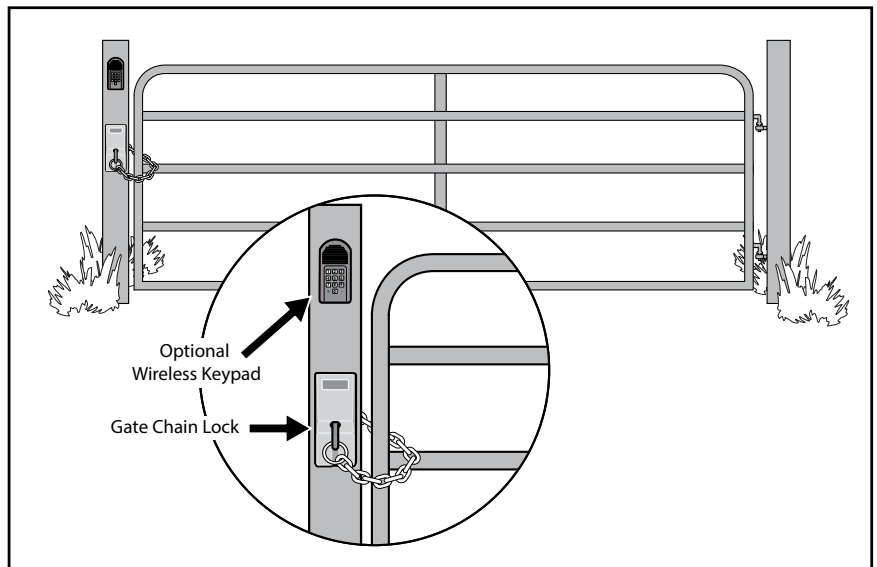
Optional Accessories



Additional transmitter (FM135) for family and friends.



Optional wireless digital keypad (FM137) allows a four digit combination code for family, friends, other guest and caretakers – without the need for multiple transmitters. Program up to 25 different changeable codes and cancel as needed.



FCC WARNING: Changes or modifications to this unit not expressly approved by the party responsible for compliance could void the user's authority to operate the equipment. In accordance with FCC Part 15, Section 15.21, the manufacturer is not responsible for any radio or TV interference caused by unauthorized modifications to this equipment. Such modifications could VOID the user authority to operate the equipment.

NOTE: This equipment has been tested and found to comply with the limits for a Class B digital device, pursuant to Part 15 of the FCC Rules. These limits are designed to provide reasonable protection against harmful interference in a residential installation. This equipment generates, uses and can radiate radio frequency energy and, if not installed and used in accordance with the instructions, may cause harmful interference to radio communications.

However, there is no guarantee that interference will not occur in particular installations. If this equipment does cause harmful interference to radio or television reception, which can be determined by turning the equipment off and on, the user is encouraged to try to correct the interference by one or more of the following measures: • Reorient or replace the receiver antenna. • Increase the separation between the equipment and the receiver. • Connect the equipment into an outlet on a circuit different from that which the receiver is connected. • Consult the dealer or an experienced radio/TV technician for help.

GTO Limited One Year Warranty

Gates That Open, LLC gate openers and accessories are covered under warranty by the manufacturer against defects in materials and manufacturer workmanship for a period of one (1) year from date of purchase, *provided the recommended installation procedures have been followed.*

In the case of product failure due to defective material or manufacturer workmanship within the one (1) year warranty period, the product will be repaired or replaced (at the manufacturer's option) at no charge to the customer, if returned freight prepaid to GTO, 3121 Hartsfield Road, Tallahassee, Florida, USA 32303. **IMPORTANT: Call (800) 543-1236 for a Return Goods Authorization (RGA) number before returning accessory to factory.** Products received at the factory without an RGA number will not be accepted. Replacement or repaired parts are covered by this warranty for the remainder of the one (1) year warranty period or six (6) months, whichever is greater. GTO will pay the shipping charges (equal to United Parcel Service GROUND rate) for return to the owner of items repaired under warranty.

The manufacturer will not be responsible for any charges or damages incurred in the removal of the defective parts for repair, or for the re-installation of those parts after repair. This warranty shall be considered void if damage to the product(s) was due to improper installation or use, connection to an improper power source, or if damage was caused by electrical power surge, lightning, wind, fire, flood, insects or other natural agent.

After the one (1) year warranty period, GTO, will make any necessary repairs for a nominal fee. Call GTO at (800) 543-1236 for more information. This warranty gives you specific legal rights, and you may also have other rights which may vary from state to state. This warranty is in lieu of all other warranties, expressed or implied. **NOTE: Verification of the warranty period requires copies of receipts or other proof of purchase. Please retain these records.**



Gates That Open, LLC • 3121 Hartsfield Road • Tallahassee, Florida 32303
www.mightymule.com • 1-800-543-4283

Technical Support Hours: MON - FRI 8:00AM - 7:00PM (ET) • 1-800-543-1236