



SECURITRON®
ASSA ABLOY

High Security Electrified Gate Locking Products



ASSA ABLOY, the global leader
in door opening solutions



GL1 2000 lb. Gate Lock

Application - The GL1 Electromechanical Gate Lock is designed to secure a wide variety of vehicle and pedestrian gate applications where security and weather resistance are required. The GL1 functions equally well in both electrically and manually operated gate installations and can be used for swing gates, sliding gates, stock cage gates or other applications.

Features and Benefits

- 2,000 lbs. holding force
- Operates under preload up to 100 lbs
- Automatic dual voltage - no field adjustment required
- Fail Secure convertible to Fail Safe
- Manual key override (right or left hand)
- Self-aligning receiver (+/- 1/2" horizontally and vertically) helps compensate for gate misalignment and sag
- Includes latch status monitor
- Tamper proof cast aluminum housing
- Heavy wall 1/2" inside diameter threaded steel coupling
- Hardened steel latch
- Surface mount
- Black powder coated finish
- Weather resistant

Specification Data

Holding Force: 2000 lbs. [907Kg.]

Current Draw and Voltage:

12 Volts Initial (Peak): (~1.0 sec.) @ 870 mA - Reduced: 290 mA

Power Consumption: 3.5 Watts

24 Volts Initial (Peak): (~1.0 sec.) @ 720 mA - Reduced: 170 mA

Power Consumption: 4.1 Watts

Operating Temperature: -58 to +167F [-50 to +75C]

Shipping Weight: 6 lbs.

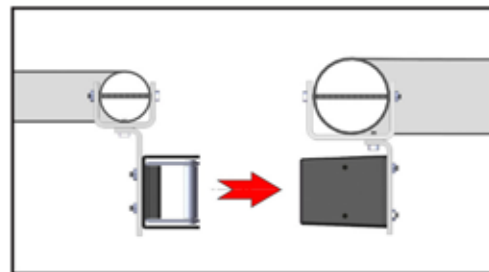
Warranty: MagnaCare Lifetime Replacement Warranty

How To Order

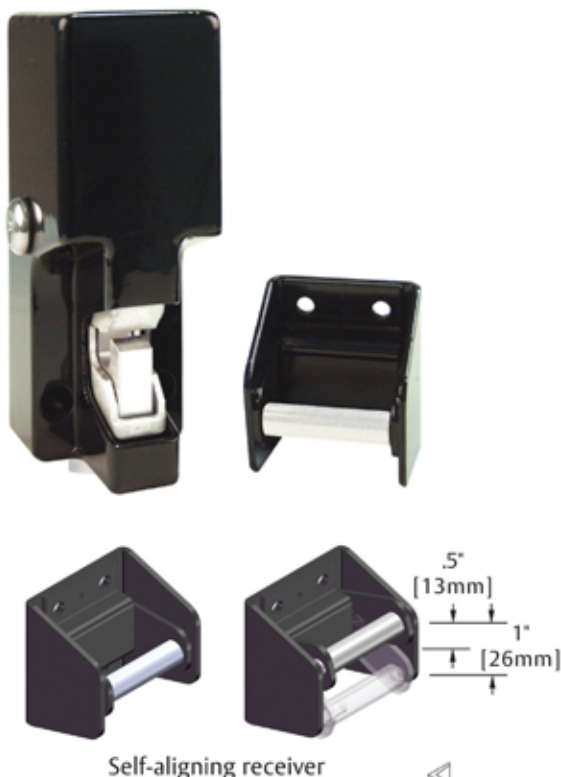
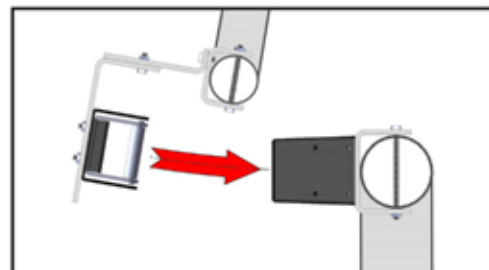
Part #	Description
GL1	Gate Lock 2000 lbs

GL1 Patent Pending

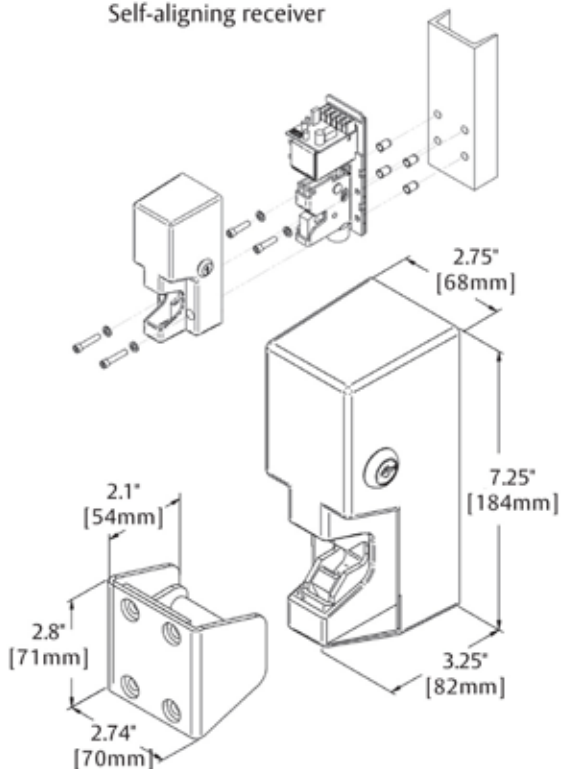
Typical Sliding Gate Application



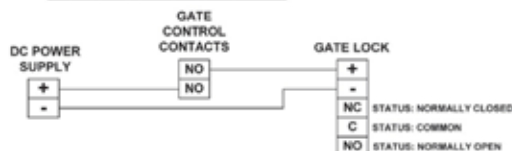
Typical Swinging Gate Application



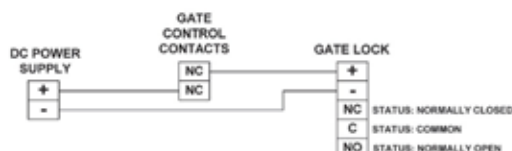
Self-aligning receiver



FAIL SECURE SYSTEM CONNECTIONS



FAIL SAFE SYSTEM CONNECTIONS



M62FG 1200lb Holding Force Gate Magnalock®

Application - 1200 lb. holding force weatherproof Magnalock with automatic dual voltage. Recommended for high security fence gates and electrically operated sliding gates.

Features and Benefits

- Patented instant release circuit - no residual magnetism
- Fully sealed electronics - tamper proof and weatherproof
- Ten feet [3.05m] of jacketed, stranded conductor
- Automatic dual voltage - no field adjustment required
- Universal threaded conduit fitting is 1/2" female - 3/4" male
- Available with BondSTAT Magnetic Bond Sensor
- UL Listed

Specification Data

Holding Force: 1,200 lbs. [544 Kg.]

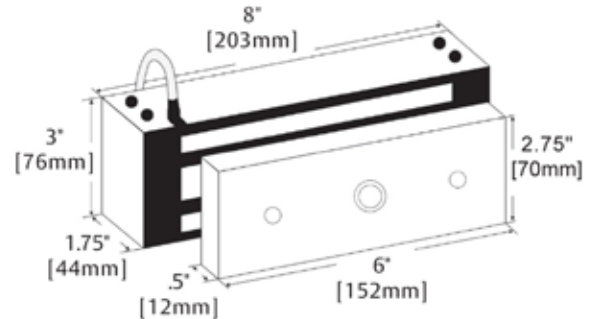
Current Draw and Voltage:

250mA at 12VDC; 125mA at 24VDC

Operating Temperature: -40 to +140F [-40 to +60C]

Shipping Weight: 11 lbs.

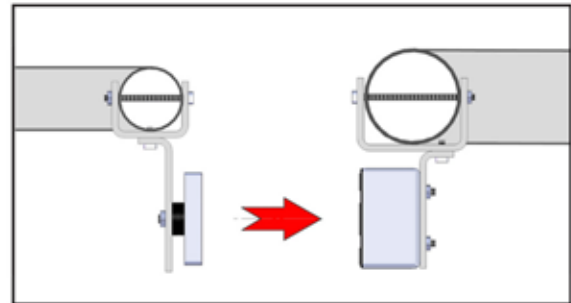
Warranty: MagnaCare Lifetime Replacement Warranty



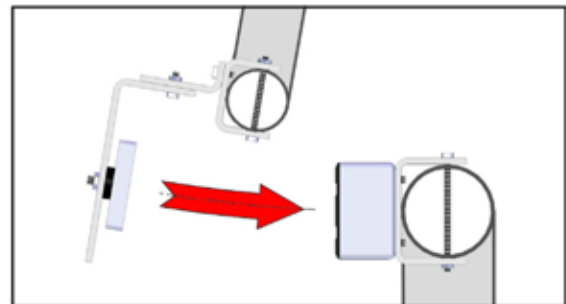
How To Order

Part #	Description
M62F	Magnalock Model M62, Face Mount
M62FG	Model 62, Face Mount, Conduit
M62FB	Model 62, Face Mount, BondSTAT
M62FGB	Model 62, Face Mount, Conduit, BondSTAT

*U.S. Patents:
#4,516,114 and #4,682,801
Other U.S. Patents Pending
NEMA: 4X IEC: IP 66*



Typical Sliding Gate Application



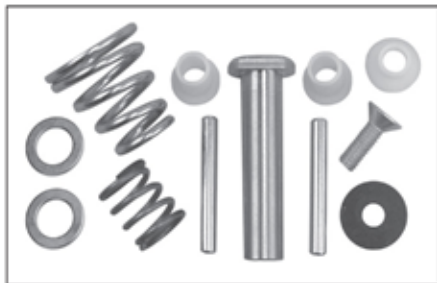
Typical Swinging Gate Application

(SASM) Shock Absorbing Strike Mount Kit

Used to control excessive impact between the strike and Magnalock in gate applications. This simple parts kit converts any M32, M62 or M82 strike plate. Will greatly extend the life of the Magnalock and additional gate hardware.

How to Order

Part #	Description
SASM	Retrofits ALL Model M32, M62, M82



SASM (Lock View)

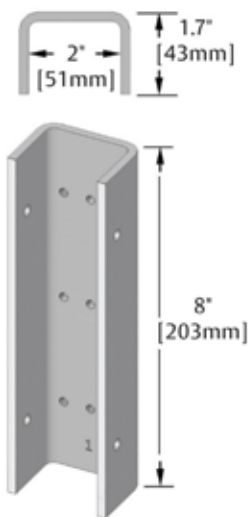


SASM (Strike View)

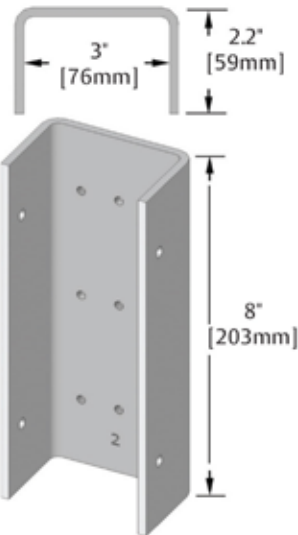
ASSA ABLOY, the global leader
in door opening solutions

FLEX-MOUNT Bracket System

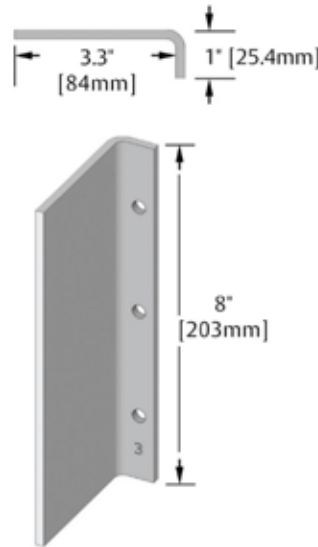
The Flex-Mount system is an intuitive set of mounting brackets designed exclusively for use with the 1,200 lb. M62FG Maglock and the 2,000 lb. GL1 Gate Lock. Using pre-formed post channels and plates of varying lengths, a high security lock mounting platform can be assembled in minutes. All components have been designed to work within standard gate specifications and feature .19" (4.8mm) zinc plated steel. All Flex-Mount brackets come pre-tapped for assembly and adjustment which allows simple bolt-on installation - or the entire system can be welded after final adjustments have been made. Permits electronics to be mounted on either the fence post or gate post. Works with round or square stock.



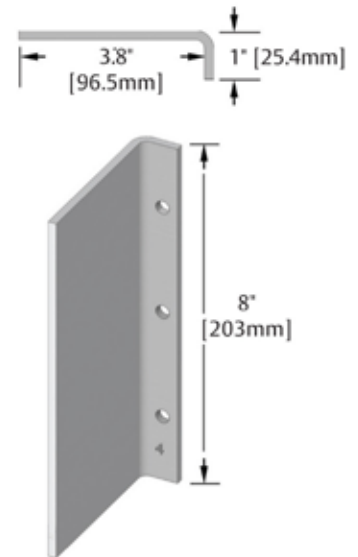
Small Post Mounting Bracket
(Lock or Post Side)
[How To Order](#) - FMB1



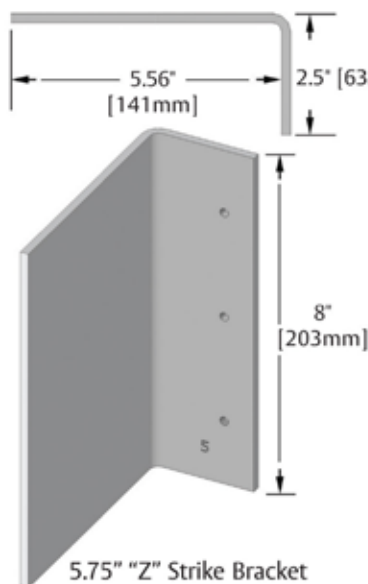
Large Post Mounting Bracket
(Lock or Post Side)
[How To Order](#) - FMB2



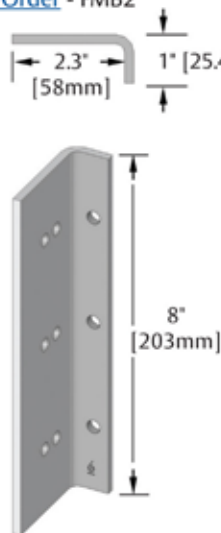
3.5" Lock Strike "L" Bracket
[How To Order](#) - FMB3



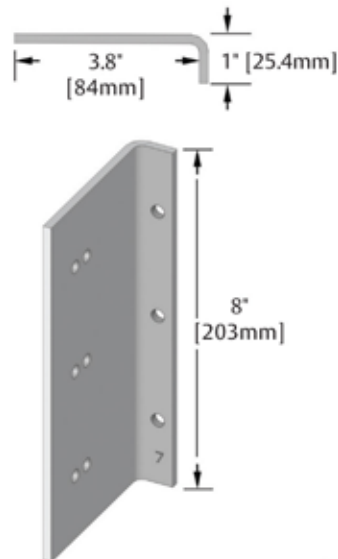
4" Lock "L" Bracket
[How To Order](#) - FMB4



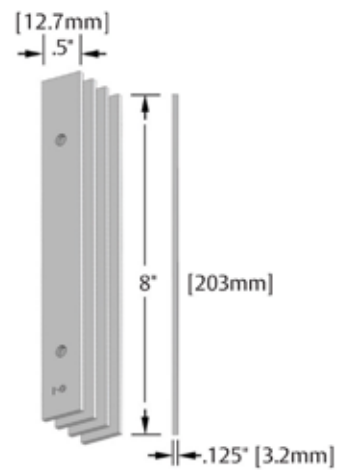
5.75" "Z" Strike Bracket
[How To Order](#) - FMB5



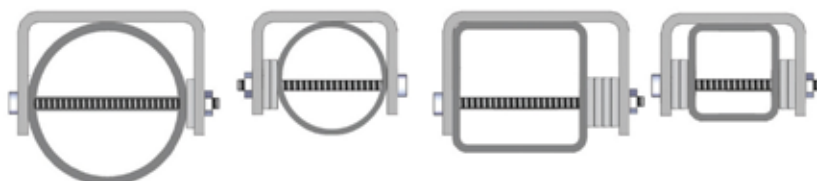
2.5" "Z" Strike Bracket
[How To Order](#) - FMB6



4" "Z" Strike Bracket
[How To Order](#) - FMB7



Post Shim Brackets (set of 4)
[How To Order](#) - FMB9-4

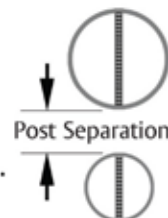


Post Shim Brackets (FMB9-4) are used to adapt Small Post Mounting Bracket (FMB1) and Large Post Mounting Bracket (FMB2) to pole/post sizes smaller than 2" or 3" respectively in 1/8" increments - 1-7/8", 1-3/4", 1-5/8", 2-7/8", 2-3/4", etc. They can also help with horizontal bracket/lock alignment. When more than two Post Shims are used together on a single post, welding the Post Bracket to the pole/post is always recommended.



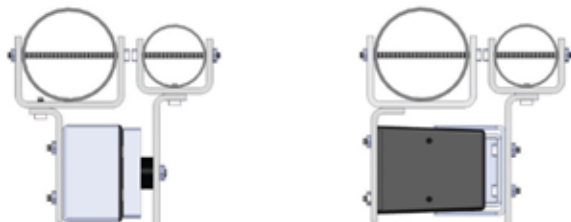
FLEX-MOUNT Kits

These pre-packaged kits will work with the majority of sliding and swinging gate applications. The sliding gate kit used with the GL1 will function when post separation is between 1" and 3-3/4". The sliding gate kit used with the M62FG will function when post separation is between 1" and 2-1/4" -and permits use with the SASM. The swinging gate kit will function properly with either the GL1 or M62FG where the gate post and fence post separation is between 1" and 2-3/4".



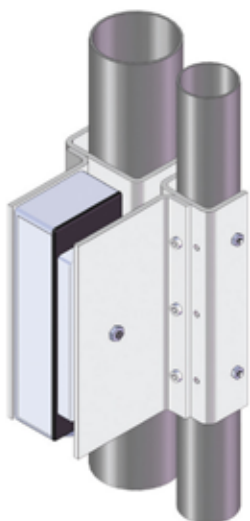
Flex-Mount Sliding Gate Kit

[How To Order](#) - FMK-SL

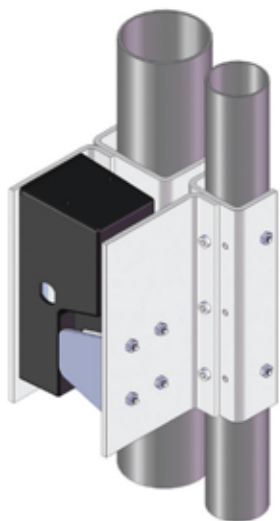


Flex-Mount Swinging Gate Kit

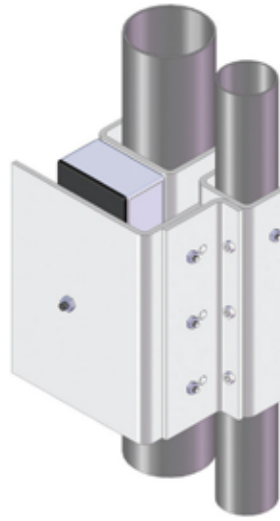
[How To Order](#) - FMK-SW



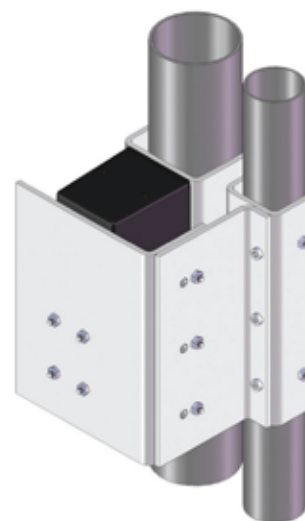
FMK-SL with M62FG



FMK-SL with GL1



FMK-SW with M62FG



FMK-SW with GL1

FMK-SL contains: FMB1, FMB2, FMB3, FMB4, FMB9-4 and all necessary mounting hardware

FMK-SW contains: FMB1, FMB2, FMB5, FMB6, FMB7, FMB9-4 and all necessary mounting hardware

Adjustable Aluminum Z Bracket Kits



- Used on inswing gates with the M62FG Magnalock - 8.5" length
- Provides 1" of lateral movement to accommodate most openings
- Allows for precision adjustments
- Includes a Dress Cover

[How To Order](#)

Part #	Description
ZA-32/62CL	Z Bracket Kit, M32/62 Series, Clear Dress Cover
ZA-32/62BL	Z Bracket Kit, M32/62 Series, Black Dress Cover
ZA-32/62SS	Z Bracket Kit, M32/62 Series, Satin Stainless Cover

NOTE: These Adjustable Z Bracket Kits will also function using M32F Series 600 lb. Magnalocks. M32 Series locks do not have the availability of a conduit fitting so alternative wiring methods will be required for proper "protection" of the lock's power cable.



BPS 12/24-1 Power Supply

Application - Recommended for use with voltage sensitive electronic safety and security components. Also recommended where an interface with a fire alarm system or battery backup is needed.



Features and Benefits

- Dual output, field selectable 12 or 24 VDC via simple toggle switch
- Supplies 1 full AMP continuous current output, even while charging back-up batteries
- SPDT AC monitoring output allows for remote monitoring of the power supply's 110V AC input
- Separate voltage inputs for load and battery allow the batteries to charge at a higher output while the load remains at exactly 12 or 24 VDC
- LED indication (AC & DC) showing power supply status
- UL listed low current fire alarm disconnect requires only a minimum size fire alarm relay and wire gauge
- Polyswitch type breakers allow for large short duration inrush current if batteries are installed (approx. 20A for 1 second)
- Line voltage and DC fuses
- Sealed lead acid-gel battery charging capability (battery not included)
- UL Class 2, linear regulated power supply provides the cleanest power available sensitive, active safety and security devices
- UL Listed



Specification Data

Voltage Adjustment:
12V/24V selector switch
Input Voltage:
120 VAC - BPS-12/24-1
220 VAC - BPSH-12/24-1
Output Current: 1 Amp
Shipping Weight: 9 lbs.
Warranty: MagnaCare
Lifetime Replacement Warranty

How To Order

Part #	Description
BPS-12-24-1	Power Supply 12/24VDC-1A
BPSH-12/24-1	Power Supply 12/24VDC-1A, 220VAC
B-12-5	12 VDC Lead Acid Battery - 5 Amp hour
B-24-5	24 VDC Lead Acid Battery - 5 Amp hour

Approvals and Listings

- BPS - Underwriter's Laboratories: File SA6635 Vol. 2 & BP7041 (UL 294, UL 1034 & NFPA 101) Class 2
- BPS - California State Fire Marshal: 3774-0923;102, :103
- BPS - City of New York MEA: 251-95E & 254-95E

DK-26 Digital Keypad

Application - The DK-26 Series Keypad is a digital keypad system designed for medium/high security control of electric locks. It consists of two components: the narrow stile keypad and the CPU board. The rugged stainless steel keypad is fully weatherproof and can be mounted outdoors and in most environments.

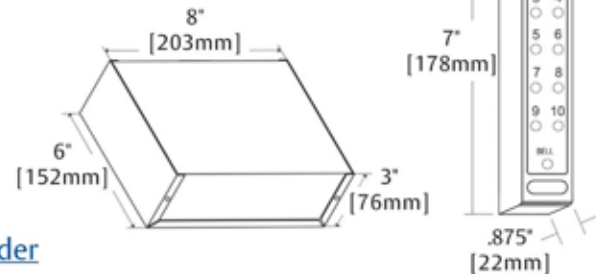
Features and Benefits

- Cast stainless steel with 11 EPDM rubber keys
- Weatherproof and vandal resistant
- Mounts on a narrow mullion
- True 10 digit operation
- Wiegand output available
- Digital Keypad System circuit board mounts in a metal enclosure and provides for 59 multiple users, expandable to 119
- 5 Amp DPDT relay output for lock control and alarm shunt, camera call-up or other device interface, REX input
- User code and/or hard code disable
- 16 ft. [4.8m], 12 conductor, 22 gauge keypad cable
- 3 LEDs and a bell button



Specification Data

Current Draw:
7mA@ rest, 160mA active, 12VAC or VDC
20mA@ rest, 190mA active, 24VAC or VDC
Voltage: 12 or 24 VDC
Operating Temperature: CPU +32 to +158F [0 to +70C]
Keypad -22 to +158F [-30 to +70C]
Shipping Weight: 5.0 lbs.
Warranty: MagnaCare Lifetime Replacement Warranty



How To Order

Part #	Description
DK-26SS	Digital Keypad System Narrow Stile Stainless (59 users)
DK-26BK	Digital Keypad System Narrow Stile Black (59 users)
DK-26SSXB	DK-26 w/Expansion Circuit Board Stainless (119 users)
DK-26BKXB	DK-26 w/Expansion Circuit Board Black (119 users)

Approvals and Listings

- CE: EN 50081-1 & EN 61000-6-2