

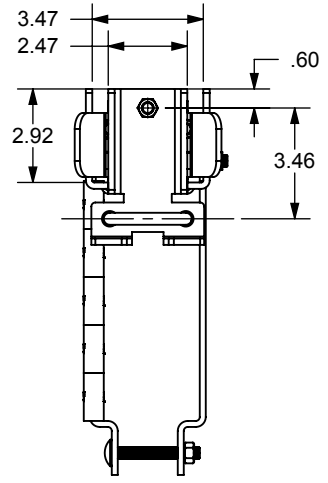
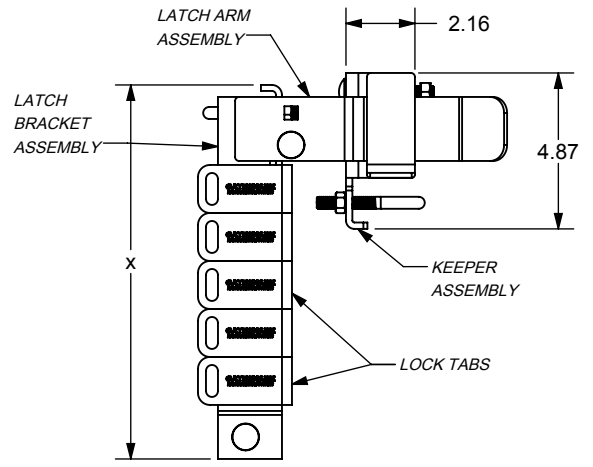
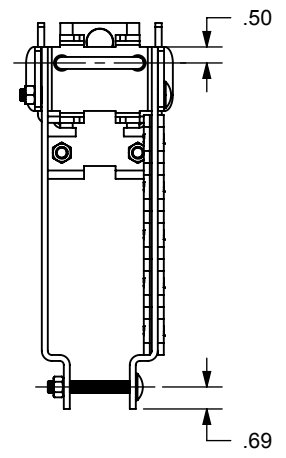
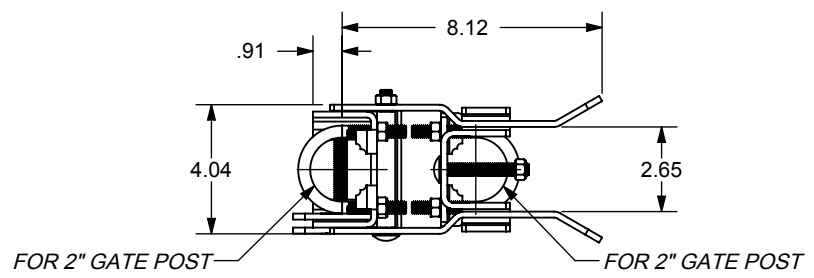
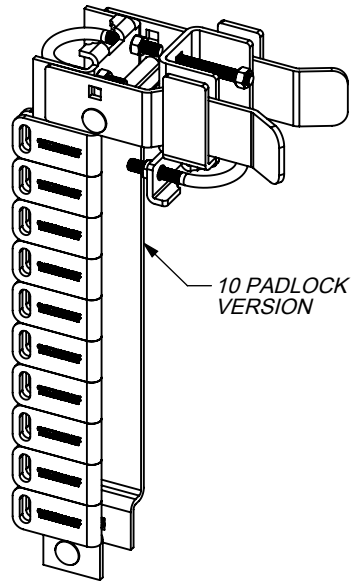
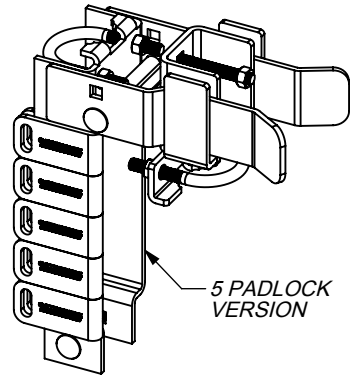
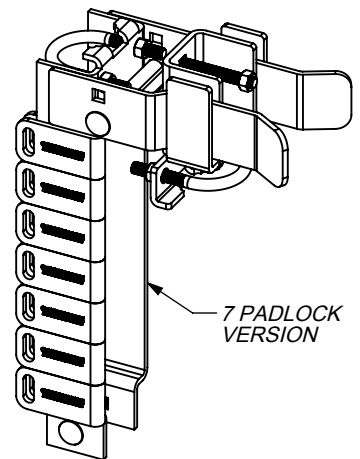
PART #	DESCRIPTION	FINISH	LOCK TAB QTY.	"X" DIM
GSL-5-DD	5 PADLOCK GATE LATCH - GALV.	HDG	5	11.7
GSL-5-DD-BK	5 PADLOCK GATE LATCH- BLACK	Z/P BLACK PC	5	11.7
GSL-7-DD	7 PADLOCK GATE LATCH - GALV.	HDG	7	14.7
GSL-7-DD-BK	7 PADLOCK GATE LATCH- BLACK	Z/P BLACK PC	7	14.7
GSL-10-DD	10 PADLOCK GATE LATCH - GALV.	HDG	10	19.2
GSL-10-DD-BK	10 PADLOCK GATE LATCH- BLACK	Z/P BLACK PC	10	19.2

ECR/DCR		REV.	REVISIONS DESCRIPTION	DATE	APPD
-	-	-	INITIAL RELEASE	9-27-17	-
-	-	-	-	-	-

**PACKAGING INSTRUCTIONS**  
(5 PADLOCK VERSION SHOWN)

- BOXED SET TO INCLUDE:**  
 (1) LATCH BRACKET ASSEMBLY  
 (1) LATCH ARM ASSEMBLY  
 (1) KEEPER ASSEMBLY  
 (\*\*\*) LOCK TABS  
 (1) INSTRUCTION SHEET  
 (1) POLYBAGGED FASTENER SET, INCLUDING:  
 (2) 3/8-16 X 3 U-BOLT  
 (2) 3/8-16 X 2.75" CARRIAGE BOLT  
 (1) 3/8-16 X 4.5" CARRIAGE BOLT  
 (7) 3/8-16 HEX NUTS

\*\* = SEE TABLE LOCK TAB QTY.



(5 PADLOCK VERSION SHOWN)

DIMENSIONS ARE IN INCHES  
 TOLERANCES:  
 FRACTIONAL: ±1/16"  
 ANGULAR: MACH ±1° BEND ±1°  
 TWO PLACE DECIMAL ±0.01  
 THREE PLACE DECIMAL ±0.005

MATERIAL  
**STEEL**  
 FINISH  
**HDG OR Z/P & PC**  
 DO NOT SCALE DRAWING

NAME	DATE
DRAWN: EET	9/27/17
CHECKED:	
ENG APPR:	
MFG APPR:	
G.A.:	
COMMENTS:	

**NATIONWIDE INDUSTRIES**

**MULTI PADLOCK DOUBLE DRIVE COMMERCIAL GATE LATCH**

SIZE: <b>A</b>	DWG. NO. <b>CS--GSL--*--DD</b>	REV. <b>-</b>
SCALE: 1:1	WEIGHT:	SHEET 1 OF 1

**PROPRIETARY AND CONFIDENTIAL**  
 THE INFORMATION CONTAINED IN THIS DRAWING IS THE SOLE PROPERTY OF NATIONWIDE INDUSTRIES. ANY REPRODUCTION IN PART OR AS A WHOLE WITHOUT THE WRITTEN PERMISSION OF NATIONWIDE INDUSTRIES IS PROHIBITED.