

# **AIPHONE®**

Hands-free  
Color Video  
Intercom

## **JF Series**



Reliable Security  
Simple Functionality  
Sophisticated Design

# In Living *Color*







**AIPHONE®**

# JF Series

Hands-free Color  
Video Intercom

## Aiphone presents the JF Series

- This innovative system provides added convenience of hands-free communication
- A sleek, sophisticated and streamline design complements most interiors
- Comparable prices to that of a traditional black and white video intercom system
- Identify visitors using high resolution video
- Easy and intuitive to operate and requires little time to install
- Applicable in most industry markets:

**Commercial** → Controlled entrances, interior offices, retail stores, parking garages, loading docks and employee only areas

**Educational** → Primary and secondary schools, college campuses, controlled entrances, service areas and faculty rooms

**Government** → Local, state and federal government branches, courtroom security, airports and embassies

**Healthcare** → Hospitals, medical clinics, administrative offices, exam rooms, nurseries, pharmacies, and staff lounges

**Residential** → Single-family residences, gated entries, housing developments and multi-tenant buildings with individual entrances



# Simple. Sophisticated. Security.



The JF Series is a high performance, hands-free video intercom system with a superior monitor and an amazingly slim design. It is easy to operate and requires little time to install.

The JF Series is the simple and effective solution to your security needs.

## Common Features

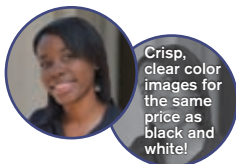


JF-1MD Standard Hands-free Color Video System

JF-2MED Enhanced Hands-free Color Video System

### • Affordable Color Video System

In the past, black and white video systems have generally been less expensive than color video systems. The new JF Series has changed all that. **Now premium color video is available at the cost of basic black and white!!**



### • Clear Identification Provided Day & Night

In low light conditions, the video door station's built-in white LED illuminators will activate and send a clear color image to the 3.5" TFT color LCD monitor. Color identification is always available, even at night!!



### • Both Hands-free & Push-to-Talk

When a call comes in, press the TALK button to begin hands-free VOX (voice operated exchange) communication. In certain situations, such as a noisy environment, push-to-talk communication gives the person at the monitor control over transmitting and receiving communication.



### • LED Light Indicates Who is Speaking

For VOX communication, the LED light turns on when you talk to visitors and turns off when you are listening. If communication is push-to-talk and release-to-listen, the LED light turns on when pushed and turns off when released.



### • 5 Types of Video Door Stations



**JF-DA**  
Fixed Video Door Station, plastic cover, surface mount



**JF-DV**  
Fixed Video Door Station, zinc die cast, surface mount



**JF-DVF**  
Fixed Video Door Station, stainless steel, flush mount



**JF-DVF-HID**  
Fixed Video Door Station, embedded HID® ProxPoint® Plus Proximity Card Reader, stainless steel, flush mount



**JF-DVF-HID-I**  
Fixed Video Door Station, embedded HID® iCLASS™ Smart Card Reader, stainless steel, flush mount

### • Entrance Monitoring

Enables you to monitor the area around the door station without inside sound being heard from the outside, ensuring privacy.

### • Option Button

Controls an external device, such as an outdoor entrance light or secondary door release (with supplied option connector).

**NOTE:** Not available on JF-1SD or JF-2SD



# JF-1MD

Standard Hands-free  
Color Video System

Supports **1 Door Station &  
1 or 2 Inside Stations**

**Only 1-1/16"  
Thin!!**



The JF-1MD is a standard hands-free color video entry security system. It supports one color video door station, one master station with monitor, and one sub master station with or without a monitor. Five different door stations are available: JF-DA, JF-DV, JF-DVF, JF-DVF-HID and JF-DVF-HID-I. The JF-DA is a standard, compact door station with a plastic cover. The JF-DV and JF-DVF both offer call buttons and vandal/weather-resistant panels. The JF-DVF-HID and JF-DVF-HID-I both have call buttons, weather/vandal-resistant panels, and embedded access control card readers. All of the video door stations have a built-in speaker, microphone and a color CCD camera with white illuminator LEDs.

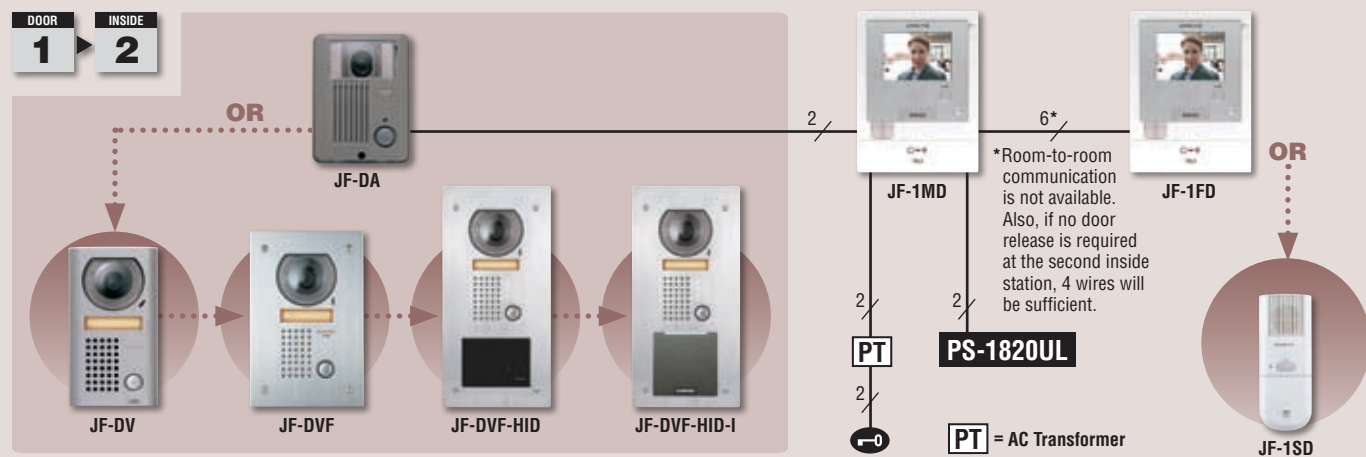
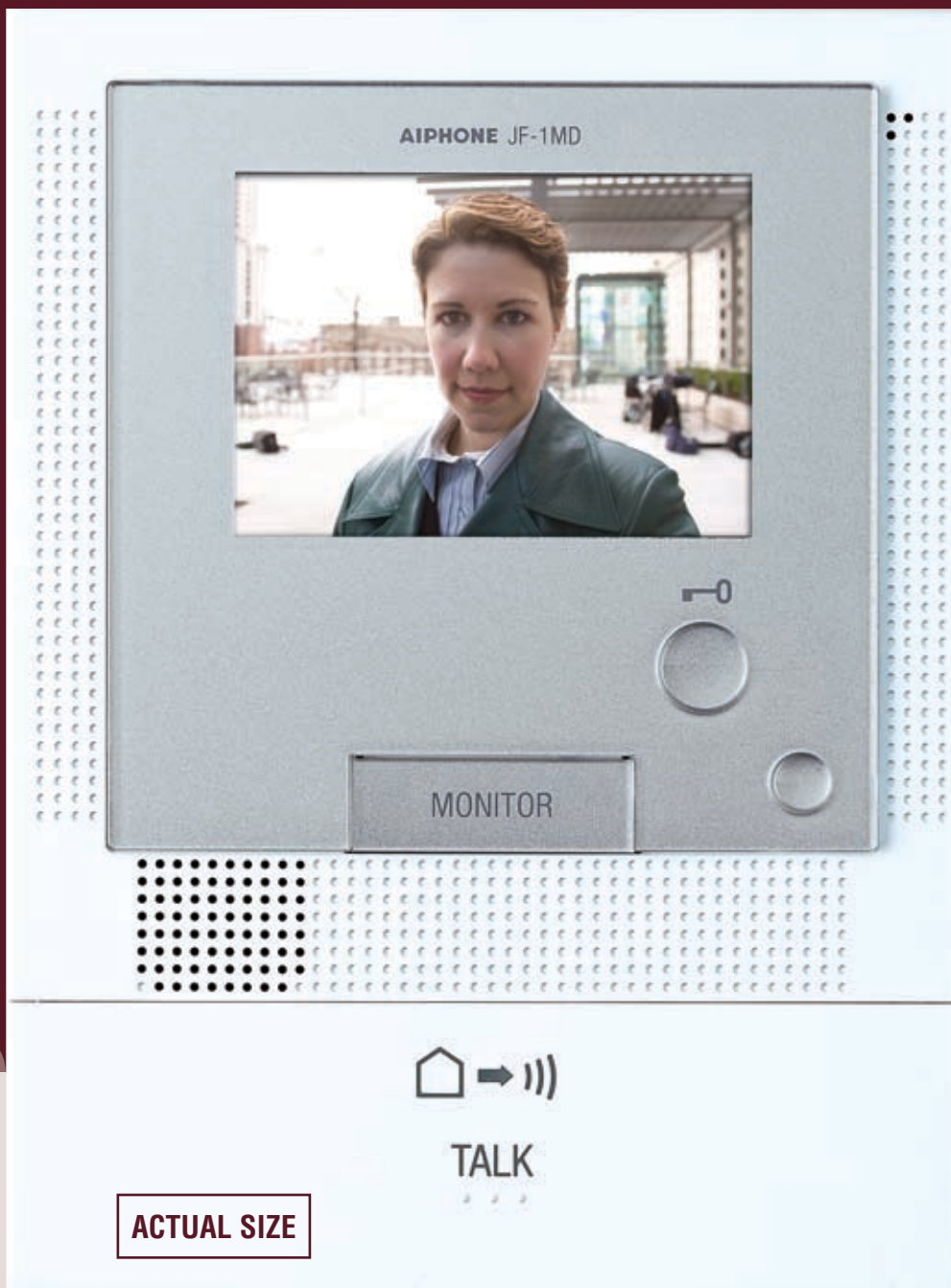
## Boxed Sets



**JFS-1AD:**  
JF-1MD, JF-DA  
& power supply

**JFS-1ADV:**  
JF-1MD, JF-DV  
& power supply

**JFS-1ADF:**  
JF-1MD, JF-DVF  
& power supply



# JF-2MED

Enhanced Hands-free  
Color Video System

Supports **2 Door Stations** &  
**3 Inside Stations**

Only 1-1/4"  
Thin!!



The JF-2MED offers the same features of the JF-1MD, plus several enhancements. It supports two color video door stations and three inside color monitor stations. Additional features include built-in Picture Memory, Internal Voice Memo, and Entrance Messaging. Image sequences are automatically recorded (8 frames per image) when a visitor calls. Up to 50 image sequences can be recorded and 10 sequences can be saved. Save special or necessary images, leave internal voice messages, and play recorded voice greetings for visitors.

## Boxed Sets



**JFS-2AED:**  
JF-2MED, JF-DA  
& power supply

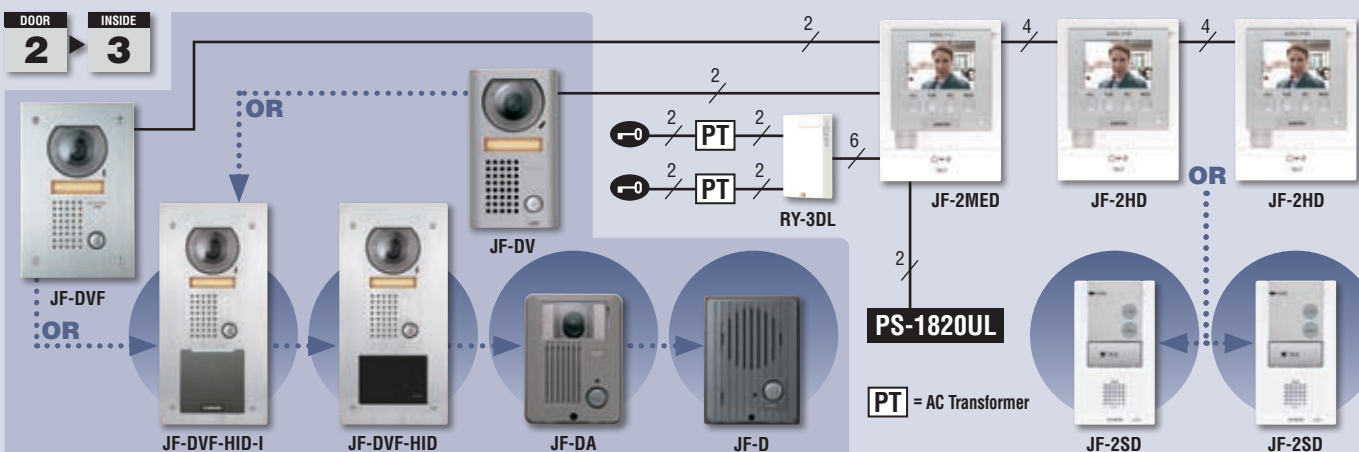
**JFS-2AEDV:**  
JF-2MED, JF-DV  
& power supply

**JFS-2AEDF:**  
JF-2MED, JF-DVF  
& power supply



TALK

ACTUAL SIZE





# Additional Features for Added Security & Enhanced Communication

## Picture Memory

Picture Memory is available both manually and automatically

### • Images are Automatically Stored

Up to 50 image sequences can be recorded at a rate of 1 frame per second and 8 frames per image. This is a total of 400 separate frames that can be documented. Overall, 10 sequences (80 frames) can be saved and protected from automatic overwriting.

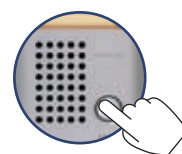
### • Play & Pause Frames

Play 8 frames continuously so it appears to be a moving image. If needed, pausing and frame-by-frame play mode are also available. Both the manual recording of visitors and the playback of recorded images are able to be controlled by the master and sub master stations.



### • Automatic Recording

When the CALL button on the door station is pushed it automatically starts to record. This feature is ideal when you are away or unable to answer calls from visitors.



### • Manual Recording

When manual recording is necessary, just push the REC button on the master station while monitoring or talking to a visitor. This feature helps keep record of any, or all, visitors who call in.



8 frames per image  
at 1 frame per second

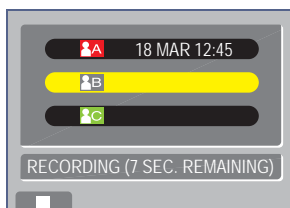


## Voice Memo

Voice Memo gives the advantage to stay in touch with family, staff or colleagues

### • Record & Play Back Messages

Easily record and play back a short message for someone or a reminder for yourself using the Voice Memo feature. Up to 3 voice memos for internal use can be recorded with up to 15 seconds per memo.



Good morning, Ms. Jenkins. I have a meeting this morning so I won't be in until 11:30am. See you then!

Recording

Playing

Good morning, Ms. Jenkins...

## Message for Entrance

Outgoing messages can be pre-recorded and sent out to the door station

### • Pre-Recorded Messages

When you can't, or don't want to use your voice to answer a visitor, simply use the Message for Entrance function. It allows up to two pre-recorded messages to be played when appropriate. After identifying a visitor, you can choose to use either your voice or a pre-recorded outgoing message to respond. This feature is helpful for individuals with limited speech abilities, non-native language occupants, or anyone who would prefer not to be identified.



## Extra Features

Added benefits of the JF-2MED Enhanced Hands-free Color Video Intercom System

### • Select from 5 different display languages

Choose from English, French, German, Spanish or Dutch

### • All Call with 1-button answer back from any station

### • Video Signal (NTSC) Output from Master Station

### • External Sensor Input

When an external sensor is activated, the inside monitor shows a warning sign and sounds an alert. This sound notification can also be set to alert at the door station.

### • External TALK Switch Connection (Footswitch)

For those who experience difficulty pressing the TALK button, step on the optional footswitch to operate.

### • Optional 2<sup>nd</sup> Entrance Door Station (Audio Only or Audio/Video)

# JF Standard & Enhanced Hands-free Color Video System

## Door Stations



**JF-D**  
Audio Only  
Door Station,  
plastic cover,  
surface mount  
(JF-2MED Only)



**JF-DA**  
Fixed Video  
Door Station,  
plastic cover,  
surface mount



**JF-DV**  
Fixed Video  
Door Station,  
zinc die cast,  
surface mount



**JF-DV-F**  
Fixed Video  
Door Station,  
stainless steel,  
flush mount



**JF-DV-F-HID**  
Fixed Video Door  
Station with embedded  
HID® ProxPoint®  
Plus Proximity Card  
Reader, stainless  
steel, flush mount



**JF-DV-F-HID-I**  
Fixed Video Door  
Station with embedded  
HID® iCLASS™  
Smart Card Reader,  
stainless steel,  
flush mount

## Standard Master & Sub Master Stations



**JF-1MD**  
Master Station  
with color  
monitor



**JF-1FD**  
Sub Master  
Station with  
color monitor



**JF-1SD**  
Audio Only  
Sub Master  
Station

## Enhanced Master & Sub Master Stations



**JF-2MED**  
Master Station  
with color  
monitor and  
Picture Memory



**JF-2HD**  
Sub Master  
Station with  
color monitor



**JF-2SD**  
Audio Only  
Sub Master  
Station

## Options & Accessories



**KVI**  
Access Control  
Keypad, die cast  
to match JF-DV



**KAW-D**  
30° Angle  
Box for  
JF-DA



**MKW-P**  
1-Gang  
Mounting  
Plate for  
JF-DV



**KMB-45**  
Mullion  
Mounting  
Bracket for  
JF-D and  
JF-DA



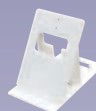
**SBX-LSE**  
Security  
Lock Box  
for JF-DV  
or JF-DV-F  
(Lock not included)



**SBX-DV-F**  
Surface  
Mount Box  
for JF-DV-F



**SBX-DV-F-P**  
Surface Mount  
Box for JF-DV-F-HID  
or JF-DV-F-HID-I



**MCW-S/A**  
Monitor  
Desk  
Stand



**MKW-DK/A**  
Motion Detector  
Adaptor for video  
door station(s)



**JBW-BA**  
Long Distance  
Door Station  
Adaptor



**EL-10S**  
Electric  
Door Strike,  
12V AC,  
180mA



**RY-3DL**  
Selective  
Door  
Release  
Adaptor



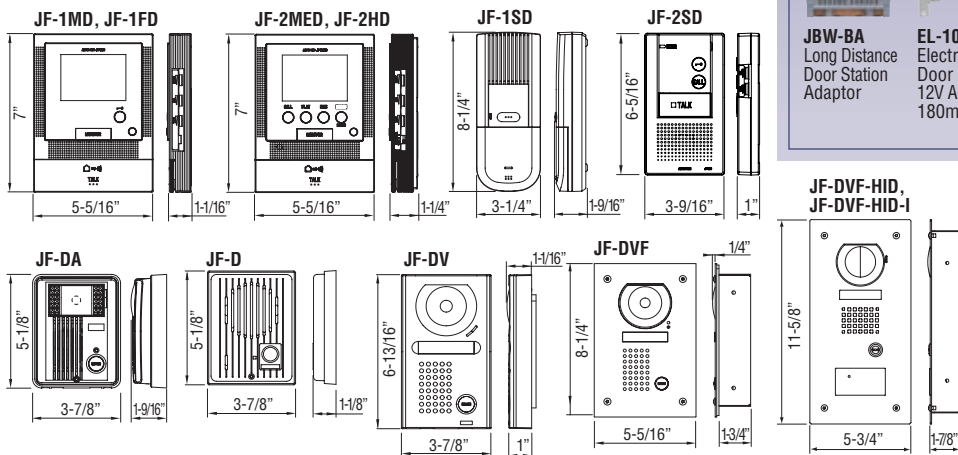
**RY-18L**  
Form C  
Door  
Release  
Relay  
(1 door)



**TAR-3**  
External  
Signaling  
Relay  
(Requires  
SKK-620B)



**IER-2**  
Call  
Extension  
Speaker



## Specifications - Standard & Enhanced Systems

**Power Source**.....18V DC - Use PS-1820UL

**Calling**.....Chime, image and audio approx. 45 sec.

**Communication**.....**AUTOMATIC** (hands-free) - to activate, momentarily press the TALK button  
**MANUAL** (press-to-talk/release-to-listen) - to activate, press the TALK button for 1 sec. or until talk LED turns on

**Video Monitor**.....3-1/2" direct-view TFT color LCD

**Scanning Line**.....525 lines

**Min. Illumination**...5 Lux at 1' distance

**Night Viewing**.....Up to 1' from camera, with white LED projected, background beyond 1' cannot be seen

**Door Release**.....Contact rating: N/O  
24V AC/DC, 500mA  
Use RY-18L for Form-C high-current contact

**Wiring**.....Door to master: 2-cond.  
Master to sub (**Standard**): 6-cond.  
Master to sub (**Enhanced**): 4-cond.  
All mid cap, solid, non-shielded

## Specifications - Enhanced System Only

**Picture Memory**...Record up to 50 image sequences (1 frame per second, 8 frames per image,). Save up to 10 sequences (80 frames)

**Voice Memo**.....Record max. 3 voice memos (max. approx. 15 sec./memo)

**Msg. for Entrance**...Record max. 2 messages (max. approx. 10 sec./message)

**Distance**.....Door to farthest master or sub master (**Standard**): \* 165'(22AWG) 330'(18AWG)  
Door to master (**Enhanced**): \* 165'(22 AWG) & 330'(18 AWG)  
\*use JBW-BA for distances up to 820' (16AWG)  
Master to farthest sub (**Enhanced**): 165'(22 AWG) & 330'(18 AWG)

**Wire Type**.....Master to door: Aiphone #871802  
Master to sub(s) looped:  
Aiphone #871806 (**Standard**)  
Aiphone #871804 (**Enhanced**)  
Aiphone #851602 (**JBW-BA**)

Distributed by:

# 91260

JF Standard &  
Enhanced System 2/08



ISO 14001  
Certified



Aiphone Co. Ltd.

ISO 9001:2000  
Certified



Aiphone Corp.

Deming  
Prize



Aiphone Co. Ltd.

**Aiphone Corporation**

1700 130th Ave. NE  
Bellevue, WA 98005  
Ph: (800) 692-0200  
Fax: (425) 455-0071

[www.aiphone.com](http://www.aiphone.com)

