

1. LIST OF THE ENCLOSED PARTS

NO.	Name of Parts	No. M-210	M210 EZ
1	Outside Body	1	1
2	Inside Body	1	1
3	Rubber Escutcheon	2	0
4	Mortised Strike	1	1
5	Spindle for 40-55 mm	1	1
6	Spindle for 30-45mm	1	1
7	Machine Screw M4 x 50mm for above 5	2	2
8	Machine Screw M4 x 35mm for above 6	2	2
9	Wood Screw M4 x 16	4	4
10	Key Tumbler (red)	1	1
11	Keyless Tumbler (blue)	2	2
12	Deadbolt (Adjustable)	1	1
13	Tweezers	1	1
14	Hexagonal Bolts	2	0
15	Brass Support Pin	1	1
16	EZ Mount Metal Trim Kit (Not Shown)	0	1

For installing the M-210 EZ (with EZ trim plate) skip to EZ Install on back side of page

II. CONFIRM THE POSITION OF THE HINGE BEFORE INSTALLATION(HANDING)

DIGITAL DOOR LOCK is set up “FOR a RIGHT HAND DOOR ” The hinge is on the right side of the combination side of door as shown in Fig. 1.

\*\*\*Changing to a LEFT HAND DOOR, change the PIN per the following illustration\*\*\* (Fig 2)

a. Remove 2 blue colored screws with a #1 Phillips Screw Driver and take off the rectangular cover.

b. Place Handing Pin to Opposite Hole with supplied tweezers.

c. Replace the cover with 2 blue colored screws.

III. DETERMINE WHETHER A 2 3/8” OR 2 ¼” BACKSET IS NEEDED (Fig.3)

IV. HOW TO INSTALL THE M-210 DIGITAL DOOR LOCK

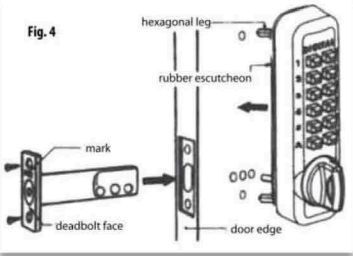
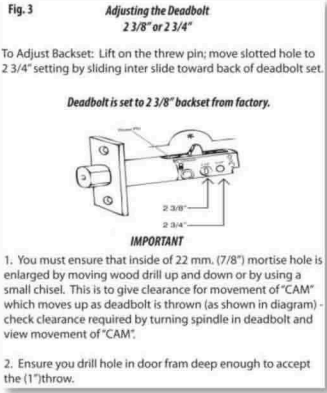
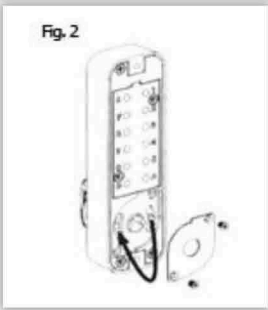
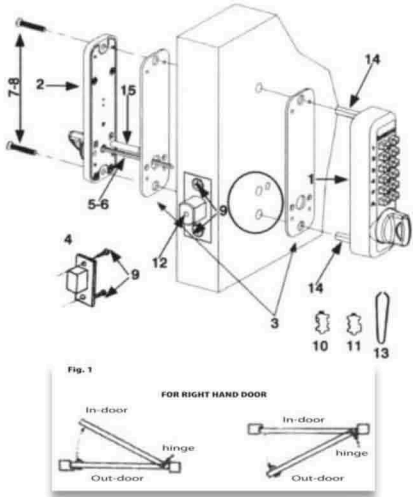
a. After determining backset, use template to determine where the DIGITAL DOOR LOCK is to be installed.

b. Drill holes as per template. If a 2 1/8” bore exists in door, only the top 5/16” hole is needed to be drilled.

IMPORTANT

You must ensure that inside of 22mm. (7/8”) mortise hole is enlarged by moving wood drill up and down or using a small chisel – This is to give clearance for movement of “CAM” which moves up as deadbolt is thrown (as shown in diagram Fig. 3)- check clearance required by turning spindle in deadbolt and view movement of CAM.

INSTALLATION INSTRUCTIONS FOR  
LOCKEY® M-210 DEADBOLT, M210 EZ & M230



c. Insert 2 hexagonal leg bolts in top and bottom holes of the outside body. Place rubber escutcheon to outside body. (Fig. 4)

d. According to the door thickness, select the proper spindle. Insert spindle through deadbolt into combination (outside) body. Only ¼” – ¾” of the spindle should stick out of inside of door before the inside body is in place.

- Door thickness from 40 mm (1.37/64”) to 55mm (2.11/64”).....86mm (3.25/64”) length spindle (part No. 5)
- Door thickness from 30 mm (1.3/16”) to 45mm (1.49/64”).....76mm (2.63/64”) length spindle (part No. 6)

**The indicated size on the Spindle is the applicable door thickness)**

**\*\*Spindle should not be shorter than ¼” or longer than ¾” for inside body to accept\*\***

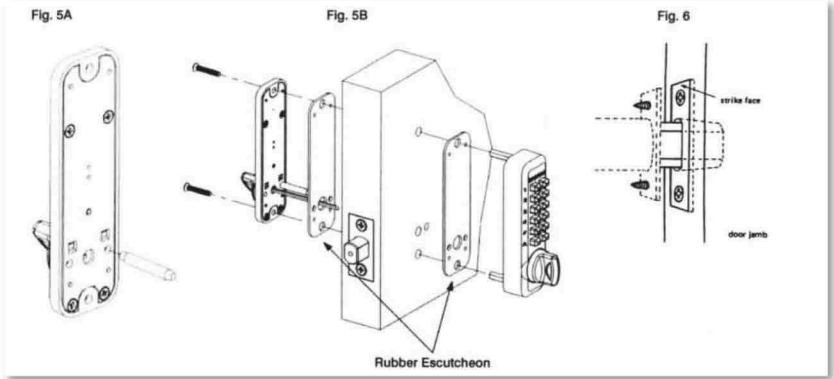
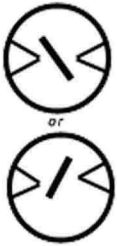
e. Place brass guide pin in appropriate hole on back side of inside body (Fig. 5A)

f. Place the Rubber Escutcheon to the back-side of inside body, install it to the door. (Refer Fig. 5B)(The spindle should be inserted to the Spindle Hole of inside body and **must be on an angle** and should be about ½” long)

g. Fasten the inside body with the machine screws supplied (Part No. 7-8)

h. Check the operation of the deadbolt unit by turning the inside and outside knob. (Should turn Smoothly)

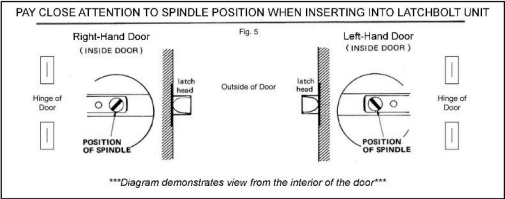
Fig. 5



i. Close the door and decide the position where the deadbolt touches to the face of the door jamb. Make the hole for the Mortised Strike and chisel out the space for strike face until it is flush with the surface. Fasten the strike with the wood screws of M4 x 5/8” (Part No.9) (Refer Fig. 6)

j. **Maintenance: No maintenance is needed for the M210. DO NOT: oil, lube, or spray with anything soluble. Doing so will void the warranty.**

PLEASE NOTE: If installing the M230 Latch Lock, follow same instructions, but place the Spindle through latchbolt as shown in figure to right. The position of the Spindle is dependent on the handing of your door.



V. How to use the M-Series Digital Door Lock

a. Lock and unlock by turning the inside knob.

b. Lock by turning the outside knob

c. Unlock by turning the outside knob to clear, then push the equipped SECRET NUMBER and turn knob to unlock.

To clear wrong combination, turn to locked position

Digital Door Lock - How to Change the Code (M-Series)

NOTE: Never oil lock or remove silver screws. This will void warranty!

Failure to follow the instructions could result in damage to your lock, so please read carefully.

1. Hold the outside body in the horizontal position. Remove the 2 red screws with a #2 screwdriver. Carefully remove the plate, as there are many springs attached to it.

2. Important: You must turn the knob to the clear position and hold in that position until you have completed the code change. By not holding the knob in the clear position, you could damage the lock and void the warranty.

3. There are BLUE (non-code) and RED (code) tumblers. Your code is made up of red tumblers always prefixed by turning the knob to clear.

While continuing to hold the knob in clear position, use tweezers to lift out code/non-code tumblers you wish to change.

Important: Hold knob in clear position, right or left, while changing code.

4. Replacing code and non-code tumblers.

While holding knob in clear position, make sure the blue or red colored end of the tumbler is facing upwards. Make sure notch is facing proper direction. See Fig. 3.

IMPORTANT: It is imperative that the tumblers are inserted with the red or blue color side up and knob is turned in the clear position.

Using the tumblers provided, you can change your code from a 2-digit code to a 5-digit code.

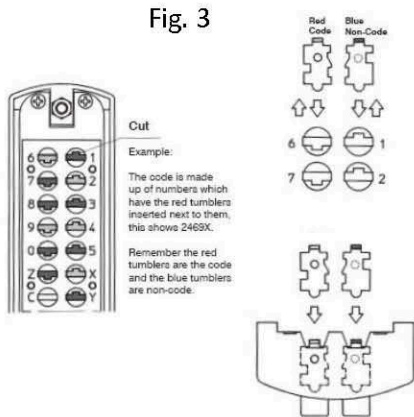
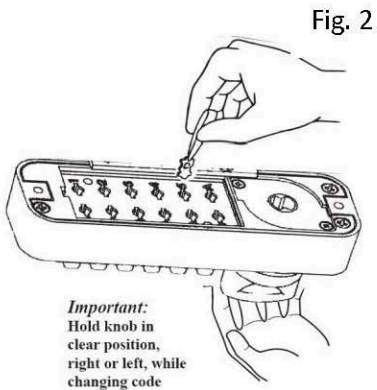
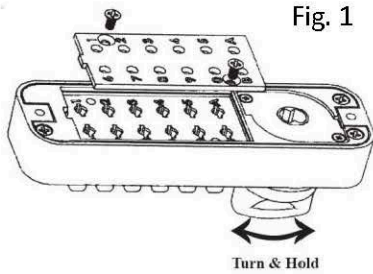
If more red or blue tumblers are needed, you can request a tumbler kit by sending \$4.00 to Locky Systems, PO Box 543, Mt. Pleasant, MI 48804. You will be sent 2 Red and 4 Blue tumblers.

To increase the code, remove the blue tumblers and replace with red tumblers.

To decrease the code, remove red tumblers and replace with blue tumblers.

5. When you have completed changing the code, carefully replace cover, making sure all springs are in place. Replace 2 red screws. Turn knob to clear and test code.

Always test your new code before installing and always test on door before locking!



M-210-EZ MOUNT Instructions

Using the EZ Mount Plate

EZ Install only if you have the EZ Mounting Plate

1. After determining the handing of your lock and setting the secret code, you are now ready to install your lock to the EZ Plate.

2. Place the outside body #1 to plate "A" and screw into place using the two- 5mm x 1/2" screws.

3. Place the brass guide pin (#15) into PLATE "B". It screws into the hole on either side of the large hole in trim plate "B".

4. Install adjustable deadbolt (#12) into door to the desired length; either 2 3/8" or 2 3/4". (See Fig. 3 Front Page)

5. Place trim plate "A" with outside body to the outside of door. Place plate "B" to the inside of door and make sure guide pin (#15) fits into the small hole in the deadbolt. Hold tight to door and screw into place using the two- 4 mm. x 5/8" or 4 mm. x 1 1/4" screws depending on the thickness of the door.

6. Place the correct length spindle (#5 or # 6) into the large hole on trim plate "B". (See IV d. Front Page) The spindle should go all the way to the outside body (#1) and should have about 1/2" of the spindle sticking out of plate "B". The spindle MUST be placed on the same angle as the angled slot in the deadbolt.

NOTE: If you have more than 7/8" of the spindle sticking out, your spindle is too long and will bind your lock. You must use the shorter spindle or cut down to 1/2".

7. Place inside body ( #2) to the trim plate "B" and screw into place using the 2 - 4mm. x 3/8" screws.

8. Your lock is now ready to test before you close your door. From the inside you should be able to lock and unlock your deadbolt. From the outside (combination side), turn your lock to the locked position. Now enter your secret code and your lock should unlock the deadbolt.

NOTE: If you need to use your secret code to lock the door, and no code to unlock the door, your handing is set up wrong. Simply change the handing on your outside body, referring to item # II in your installation instructions section.

