

TurniTec

“Turnstile mechanism”



LOCINOX®

Let's make better fences together

Locinox is offering the perfect solution for gate and fence manufacturers with this innovative and modular turnstile mechanism: the TurniTec.

See for yourself in this brochure how easy you can make different turnstile mechanisms.

To grant access to persons, a gate is often installed. However, its disadvantage is that it does not allow to control the amount of people entering the premises. The traffic direction – coming in or out – also cannot be determined with a classic gate. A turnstile can offer a good solution to these problems: it can determine the movement direction and guarantees that people enter only one by one.

This combination proves it nearly impossible for unauthorized persons to enter the premises, therefore avoiding all related problems (such as theft, vandalism, excessive amount of visitors, etc.). When the turnstile is combined with an access control system, intercom or CCTV, full access control is easily obtained.

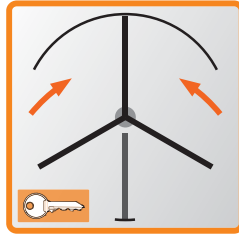
Many gate and fence manufacturers, however, decide not to construct the turnstile by themselves because of the complexity of the (electro) mechanical steering mechanism. Hence they are forced to buy the complete turnstile and therefore are unable to harmonize their fence and gate design with the turnstile's looks.

Available from May 2013

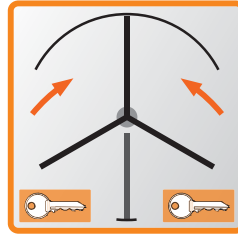
Flexible configuration:



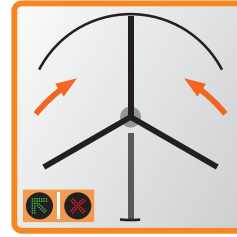
Free to turn in both directions



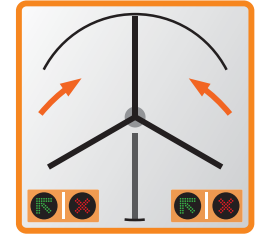
Locked or open in one direction. Free to turn in the other direction.



Locked or open in both directions.

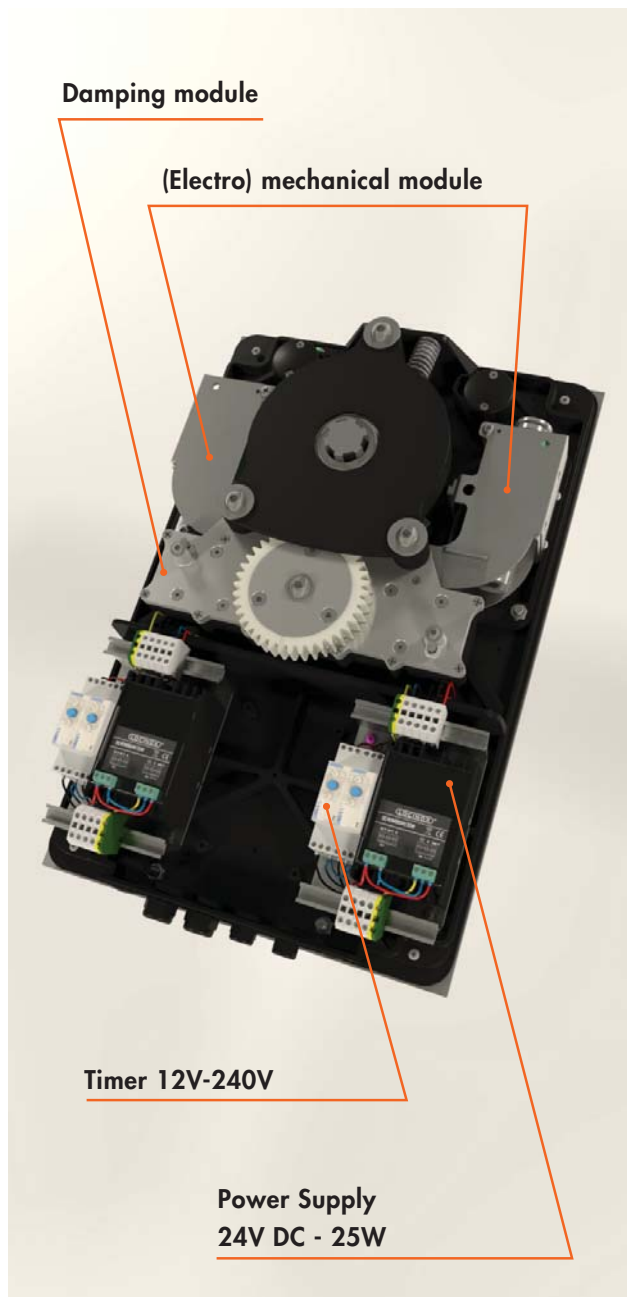


Access control in one direction. Free to turn in the other direction.



Access control in both directions.

The "TurniTec" from Locinox consists of a basic mechanism with mechanical or electro mechanical modules, which can easily be exchanged and can be installed for both left or right turning direction.



Mechanical module

This module's great advantage is that it operates 100% autonomously and does not require a connection to electrical or any other cables.

The turning directions can be easily closed or opened with a cylinder lock. In open direction, people can enter the premises freely by pushing the arm

Electro mechanical module

The electro mechanical module allows the operator 100% intelligent control of in- and out coming traffic. Opening or closing of the turnstile, turning direction and access control can all be operated with a simple signal. The arm is remotely opened after authorization of the visitor, allowing him to enter. This way of work guarantees 100% security with minimal staff expenses. The electro mechanical module is equipped with a 24V DC Locinox power supply.

We provide two varieties of the electro mechanical module, compatible with all access control systems:

Fail-open: In case of emergency or power breach, the spinning part will be set free, allowing safe passage to everyone (e.g. in case of fire).

Fail-close: In case of emergency or power breach, the spinning part will be mechanically locked, blocking the passage for everyone.

Damping module

This optional, patented damping system can withstand temperature fluctuations. The continuously connected damping mechanism allows the first part of the turning movement to spin freely, damping progressively the second part of the movement, which results in a smooth movement and prevents the turnstile arm from hitting the passer-by on the heels (damping of the movement is progressive and continuous from 60° for 3-arm turnstiles and from 45° for 4-arm turnstiles).



Use of turnstiles

Turnstiles can be used for transport- and logistics territories, industrial buildings, sport stadiums and event halls, warehouses, corporate premises, car parks, high-risk territories and air- or sea ports, etc.

100% Quality

- Completed in stainless steel and aluminium rust free materials.
- Extremely robust system with strong connection with the spindle.
- Compact (550 x 350 x 170 mm).
- Lockable electro mechanical modules by means of powerful electromagnets (in fail-open or fail-close cases).
- Automatically returns to starting position by means of industrial springs after each passage.
- Designed with a safety system to ensure the impossibility of getting stuck in the turnstile.
- Anti-passback safety: impossible for two people to pass through the turnstile at the same time because of a blocking mechanism that blocks the backwards movement every 60° from the stand-by position.
- IP 55 casing to protect the mechanism from dirt, moisture, wind, dust or vermin.
- Possible to adjust the duration of the signal (the time space during which the turning part is unlocked, using the N/O contact).
- Equipped with especially designed 24V DC Locinox power supply for outside usage.

100% Security

- Access control possible in both directions.
- Smooth continuous movements due to the damping mechanism (connected continuously).
- Blocking after half the movement: impossible to turn the arm back.
- Impossible to get stuck in the turnstile.
- Manual unlocking by means of a key remains possible.
- Counting module as an option.

100% Easy to install

With this development, Locinox kept in mind the need for the shortest possibly mounting time, ensuring the profitability of your production.

- The welding plate is included and will allow you to easily install this mechanism on any configuration of a turnstile.
- Welding plate available in black or stainless steel.
- Plug & Play: easy to install.
- Connected to every turning part through the included star spindle. If so desired, the buyer can make an adaptor piece by himself.
- Available for turnstiles with 3 (120°) or 4 (90°) arms.
- Turning left and right as fail-open and fail-close. Same components are mutually interchangeable, also after deployment.
- Modules easy to adapt on the spot.



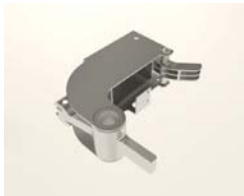
Ordering

Standard:



TurniTec basic mechanism

Optional:



Mechanic module

To use for turning left or right, lockable by means of a key.



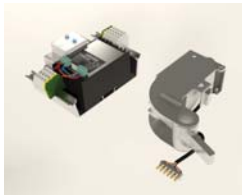
Damping module

Patented
Continuously connected
Oil-based damping
system



Electro module fail-close

To use for turning left or right, remote electric access control.



Electro module fail-open

To use for turning left or right, remote electric access control.



24V DC power supply

Safety power supply
Input: 240 V AC
Output: 24 V DC
25 W

