



Installation Manual



PLEASE NOTE ... due to the variety of possible mounting applications, no mounting hardware for the lock is provided. All necessary mounting hardware can be obtained at a local hardware store; all other hardware is provided. If you need assistance please call GTO® Technical Service at 800-543-1236.

Contents	
• Before You Start -----	page 1
• Parts Identification -----	page 2
• Mounting the Lock -----	page 3
• Wiring the Control Board -----	page 6
• Accessory and Warranty Information -----	inside back cover



Before You Start ...

Materials you *will* need before you begin the installation.

- For all installations use mounting hardware (not included) no greater than 5/16" diameter. Note: for a more secure installation, we suggest you use lock washers and/or lock nuts on all mounting hardware.
- For most **IRON and ALUMINUM TUBE** gates (*see Illustration C, page 4*) use bolts, washers, and nuts to mount both the lock and the receiver.
- For most **CHAIN LINK** gates (*see Illustration D, page 4*) use U-Bolts and saddles to mount the lock, and use bolts, washers, and nuts to mount the receiver.
- Use up to 500 ft. of 16 gauge, multi-stranded, direct burial, low voltage wire (*see inside back cover*) to connect the control box battery to the DC charger. Length depends on distance between the power supply and the control box. Ten (10) ft. of wire is included to connect the control board to the entry control; i.e. push button or keypad.

Other materials you *may* need before you begin the installation:

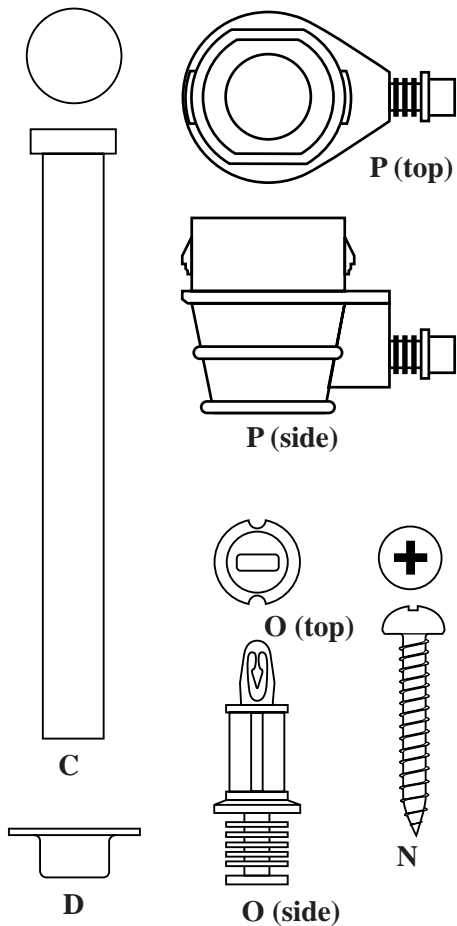
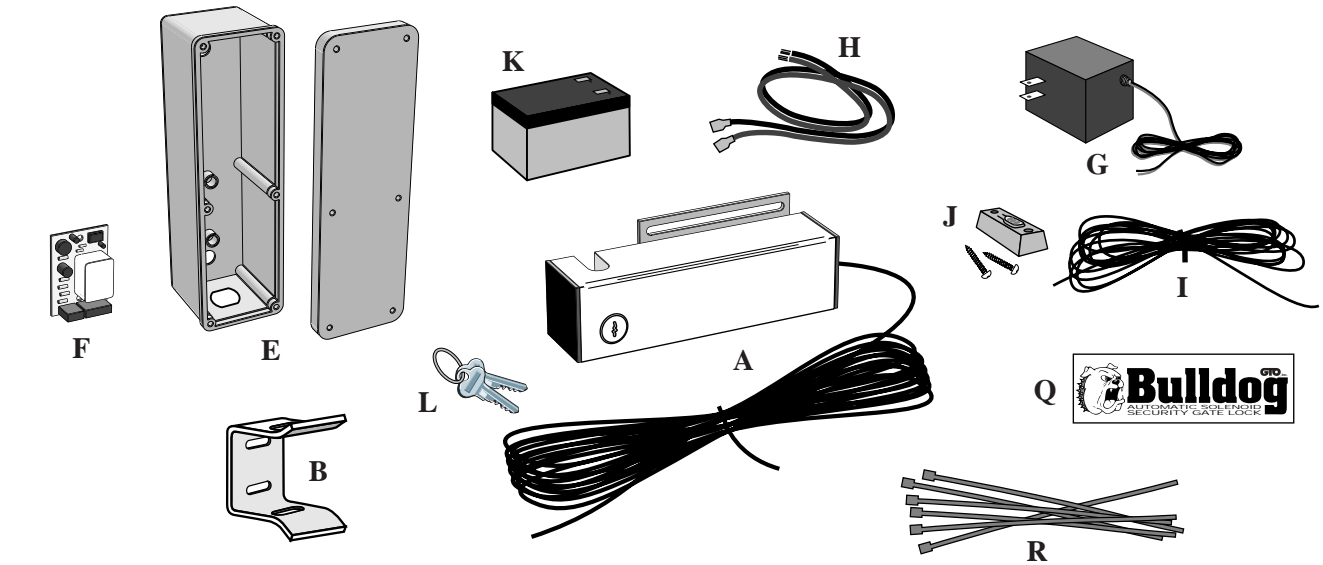
- If AC power source is more than 500 ft. from lock installation, or if installing lock where AC power is not preferred (i.e. swimming pool gate), use the GTO/PRO® 5 Watt Solar Panel to provide battery charge (*see inside back cover*).
- If mounting Bulldog lock on brick columns, walls, or other applications with limited space between gate and post use the Column Mount Lock Receiver (*see inside back cover*).
- Use PVC conduit for protection of low voltage wire connecting the control box to battery charger and entry control (*see Illustration A, page 3*).
- The push button is included with your Bulldog Gate Lock for entry control. However, other devices (card readers, keypads) with normally open (n/o) contacts may be used. Transmitters are not compatible with this product.
- For greater security, use the GTO Digital Keypad for entry control (*see inside back cover*). We strongly recommend using the Digital Keypad on swimming pool and daycare gates to help prevent children from activating lock release.

The installation has two parts ...

- Mounting The Lock and Control Box
- Wiring The Control Board

Once you have the necessary wire and mounting hardware, you are ready to begin the installation.

Parts Identification



- A - Lock w/ 20' of Low Voltage Wire
- B - Lock Receiver
- C - Clevis Pin
- D - Locking Cap
- E - Control Box
- F - Lock Control Board
- G - 12 Volt DC Charger
- H - Battery Lead Wires
- I - Ten (10) ft. of Low Voltage Wire to connect Entry Device (push button or keypad) to Control Board
- J - Push Button Entry Control and mounting screws
- K - 12 Volt Battery / 1.2 Amp Hour
- L - Manual Release Keys
- M - (6) Control Box Cover Screws
- N - (2) Control Box Mounting Screws
- O - (2) Control Board Mounting Stand-offs
- P - Strain Relief
- Q - Bulldog Lock Decal (place on lock face after installation)
- R - (6) 8" Ty-wraps

Mounting The Lock:

- Step 1: With the gate in the closed position determine the best location for the lock and receiver. Attach the lock to a solid surface or cross member to provide stability.
- Step 2: Hold receiver and lock together (with receiver pin hole and lock slot aligned) against the gate post and mark positions to drill receiver holes (see *Illustration C & D, page 4*). The receiver must be mounted with bolts (not u-bolts) to allow lock to seat properly. Secure the receiver to the gate post.
- Step 3: Recheck the lock position and alignment and mark position to drill lock holes on gate supports. U-bolts and saddles can be used to mount lock on chain link gate supports. Secure the lock to the gate. Install clevis pin and locking cap by placing clevis pin through the slots in the lock receiver and hammering the clevis pin into the locking cap (see *Illustration B*). Check and adjust alignment if necessary.
- Step 4: Determine the position for the control box and entry control (i.e. push button, keypad, etc.). The control box must be located within 20 ft. of the lock and the entry control must be located within 10 ft. of the control box (see *Illustration A*), unless monitored and operated by an attendant at a nearby site (ex. guard house). When the entry control is activated, the Bulldog locking pin retracts for 2-6 seconds, allowing the gate to be opened (see *instructions for adjusting timer on page 5*). If the gate is not opened during this time, the pin will return to the locked position.

Position the control box on fence post or other stable surface at least one (1) ft. above the ground. mount the control box using the control box mounting screws provided (see *Illustration on page 5*). Mount the entry control using the appropriate hardware.

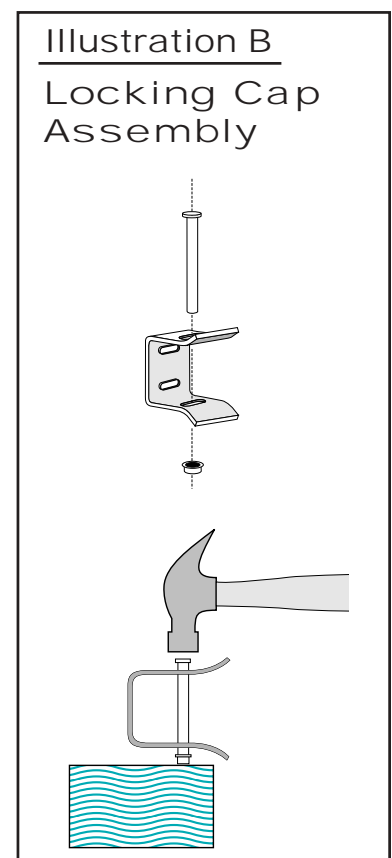
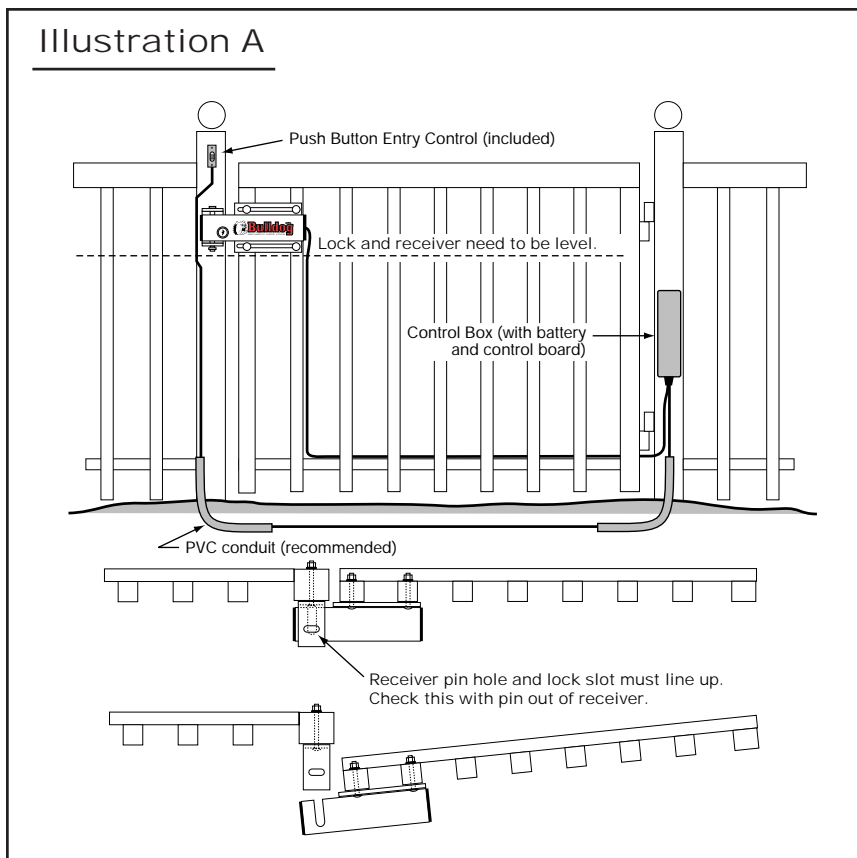


Illustration C

Iron or Aluminum Tube Fence and Gate Installation

Remember to check the alignment and mark positions before drilling holes in fence post and gate.

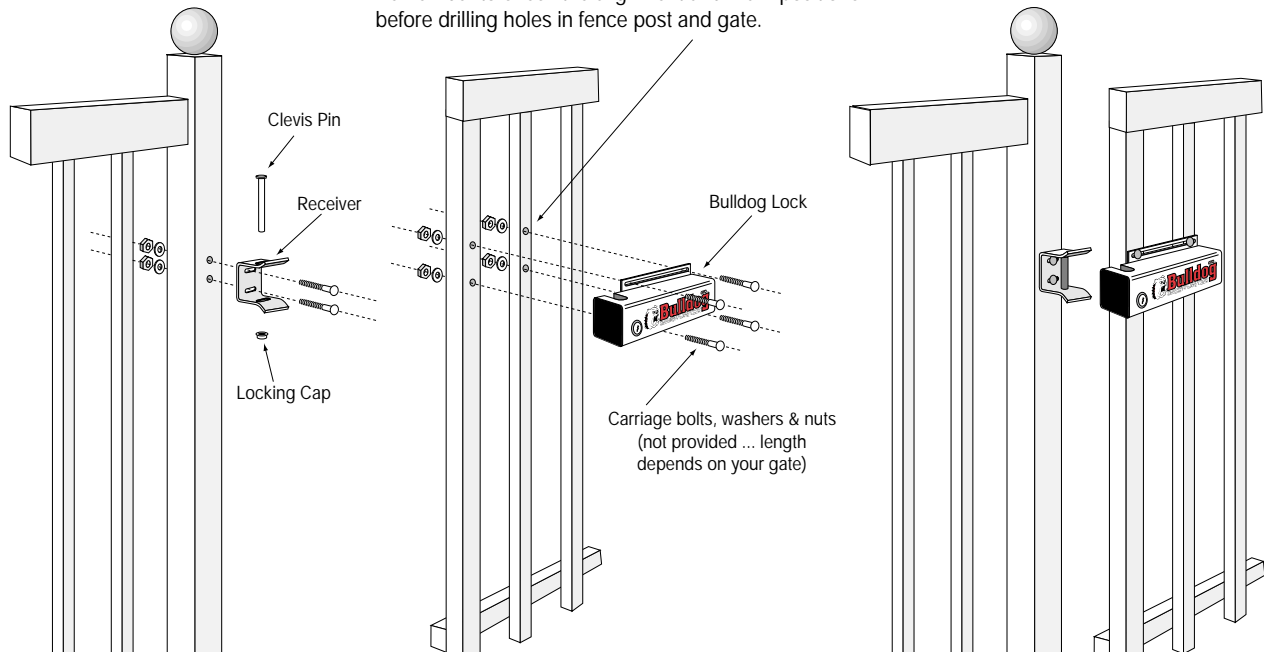
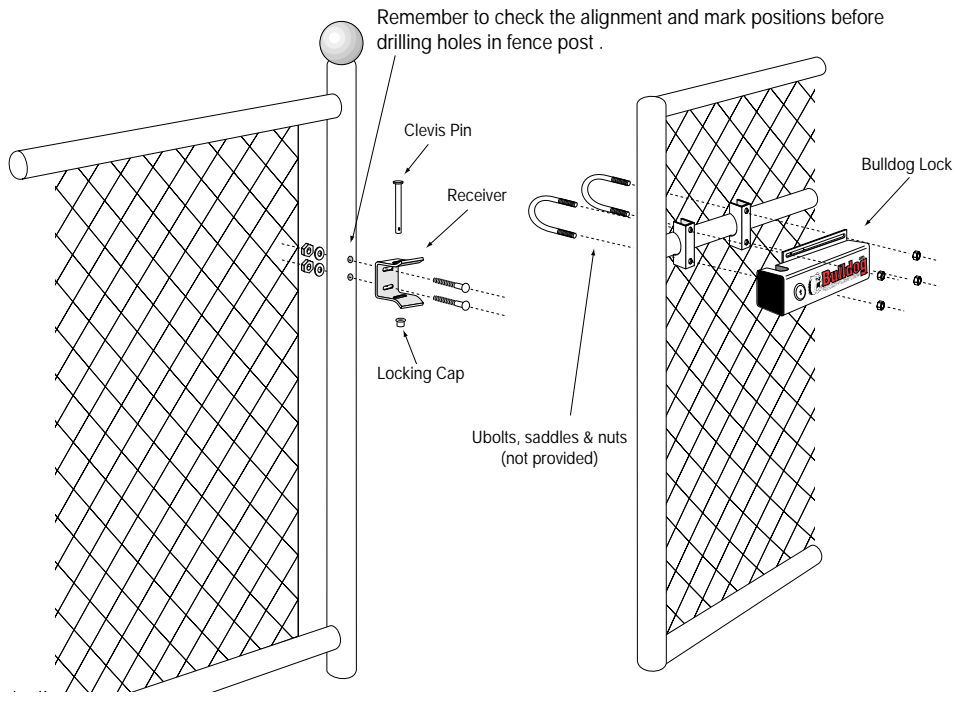


Illustration D

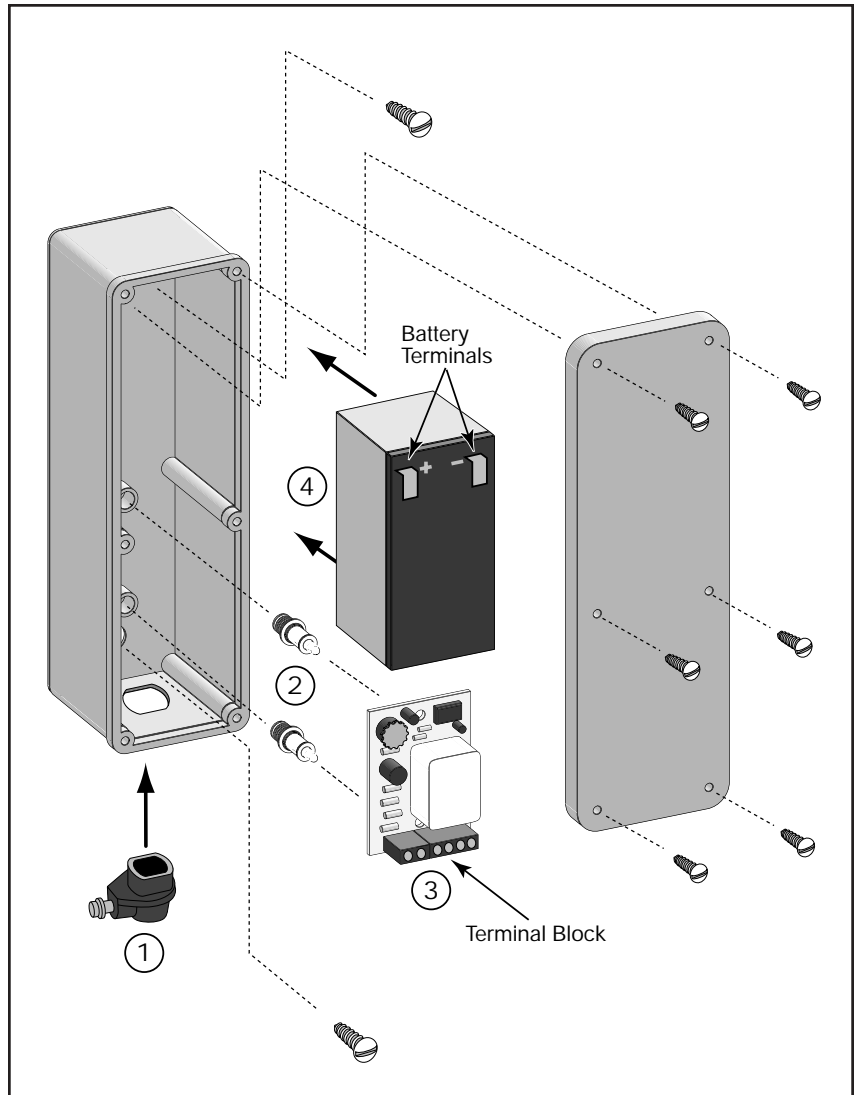
Chain Link Fence and Gate Installation

Remember to check the alignment and mark positions before drilling holes in fence post .



Control Box Assembly

- ① Press the strain relief into the control box until it clicks securely in place.
- ② Press the control board stand-offs into the stand-off receivers in the control box.
- ③ Secure the control board to the stand-offs (terminal block down) by placing stand-off pins into holes on control board and pressing board until it snaps securely in place.
- ④ Place the battery into control box (*battery terminals UP*).
- ⑤ Wire the Control Board (instructions on page 6)



Adjustable Timer

You can adjust the amount of time the lock remains in the open (retracted) position from 2 to 6 seconds. The adjustments are made with the timer screw on the control board (*see Wiring Diagram, page 6*). Turning the screw counter-clockwise decreases the time the bolt is retracted, and turning it clockwise will increase the time the bolt is retracted (lock stays open longer).

Manual Lock Release

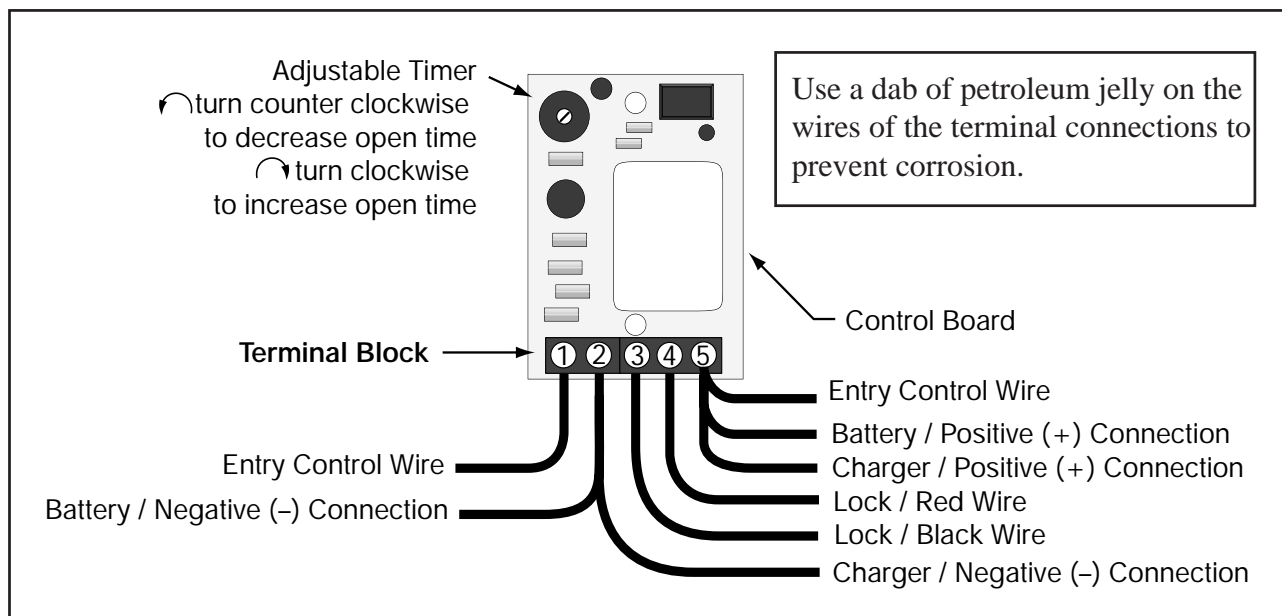
The Bulldog Automatic Gate Lock has a **keyed manual lock release**. If the electronic lock release becomes disabled for any reason, simply use the key to manually open the lock. In the event you should need to use the key. Label and place key in an accessible location.

Wiring the Control Board

WARNING: DO NOT CONNECT BATTERY LEAD WIRES OR PLUG IN 12 VOLT DC CHARGER UNTIL ALL OTHER WIRES ARE CONNECTED IN THE CONTROL BOX.

- Step 1: Attach the **RED (+)** battery lead wire to control board terminal **#5** and the **BLACK (-)** battery wire to control board terminal **#2**. **DO NOT** connect battery lead wires to the battery until all other wiring is complete.
- Step 2: Run 16 gauge, multi-stranded, direct burial low voltage wire (not provided) from the **battery charging source** (12 volt DC battery charger or optional 5 Watt Solar Panel) to the control box. Bring the low voltage wire into the control box through the strain relief. Connect the **RED positive (+)** wire from the charger to the control board terminal **#5** and the **BLACK negative (-)** wire from the charger, or solar panel, to the **#2** control board terminal.
- Step 3: Bring the **Entry Control** wires into the control box through the strain relief. The entry control can be a card reader, keypad or any normally open (n/o) contact device. Attach the entry control wires to the **#1** and the **#5** control board terminals (follow the instructions for individual device for correct polarity). The push button which is included with the Bulldog has no polarity. If you use the **GTO Digital Keypad** connect the wire from the **WHT (Normally Open)** terminal on the keypad to the **#5** terminal on the lock control board. Connect the wire from the **GRN (Common)** terminal on the keypad to the **#1** terminal on the lock control board.
- Step 4: Bring the **LOCK** wires into the control box through the strain relief. Attach **BLACK** lock wire to the **#3** control board terminal and the **RED** lock wire to the **#4** control board terminal.
- Step 5: Make sure all wiring connections are secure, then attach **RED (+)** battery lead wire to **POSITIVE (+)** battery terminal and **BLACK (-)** battery lead wire to **NEGATIVE (-)** battery terminal.
- Step 6: Now plug the 12 volt DC charger into a standard 115 volt outlet. GTO strongly recommends a surge protector be installed at the electrical outlet. If the charger and outlet are installed in an unprotected area than use a weatherproof cover to protect them.
- Step 7: **TEST YOUR LOCK** to make sure it is functioning properly. Tighten the strain relief and secure the cover on the control box using Control Box Cover Screws (provided).

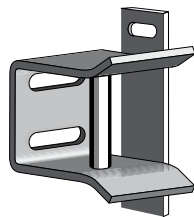
Lock Control Board Wiring Diagram



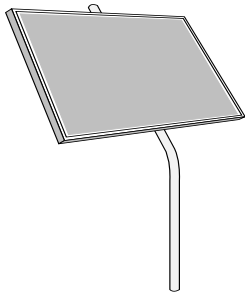
Available Accessories:



GTO DIGITAL KEYPAD ... The weatherproof digital keypad for the Bulldog Security Lock can be programmed to use up to fifteen different personal identification number (PIN) codes. Each code is face programmable with additional security features built in. Installation is easy, using 16 gauge, multi-stranded, direct burial low voltage wire. Requires three (3) AA batteries (not included). **GTO strongly recommends that the GTO® keypad be used with the Bulldog Security Lock on pool gates, so that small children cannot gain access to the pool area.**



COLUMN MOUNT LOCK RECEIVER ... For mounting the Bulldog Security Lock on brick columns, walls, and for other applications with limited space between gate and post. There must be a minimum of 2" between column/post and gate. If not, notching your post is required.



SOLAR PANEL (*comes with a two year warranty*)... The Solar Panel is a 5 watt solar powered battery charger for use with the Bulldog Pedestrian Gate Lock. Particularly suited for remote installations, each Solar Panel comes with tubular steel support, mounting clips, wire connectors, and 8 ft. of low voltage wire. Perfect for remote locations or where AC power is not preferred.

If you have questions please call our technical service number:

1 - 800 - 543 - 1 236

Limited Two Year Warranty

GTO, Inc. gate opener accessories are warranted by the manufacturer against defects in workmanship for a period of two (2) years from the date of purchase, provided recommended installation procedures have been followed.

In the case of product failure due to defective material or manufacturer workmanship within the two (2) year warranty period, the accessory will be repaired or replaced (at the manufacturer's option) at no charge to the customer, if returned freight prepaid to GTO, Inc., 3121 Hartsfield Rd., Tallahassee, FL 32303. **IMPORTANT:** Call 850/543-1236 or fax 850/575-8950 for a Return Goods Authorization (RGA) number before returning goods to factory. Products received at the factory without an RGA will not be accepted. Replacement or repaired parts are covered by this warranty for six (6) months or the remainder of the two (2) year warranty period. GTO, Inc. will pay the shipping charges for return to the owner of items repaired.

The manufacturer will not be responsible for any charges or damages incurred in the removal of the defective parts for repair, or for the reinstallation of those parts after repair. This warranty shall be considered void if damage to the product(s) was due to improper installation or use, connection to an improper power source, or if damage was caused by lightning, wind, fire, flood, insects, or other natural agent.

After the two (2) year warranty period, GTO Inc. or one of its authorized service centers will make any necessary repairs for a nominal fee. Call GTO at 800-543-1236 for more information. This warranty gives you specific legal rights, and you may also have other rights which may vary from state to state. This warranty is in lieu of all other warranties, expressed or implied. **NOTE:** Verification of the warranty period requires copies of receipts or other proof of purchase. Please retain those records.

GTO, Inc.

3121 Hartsfield Road • Tallahassee, Florida 32303 • PH (850)575-0176 • FAX (850)575-8912 • www.gtoinc.com