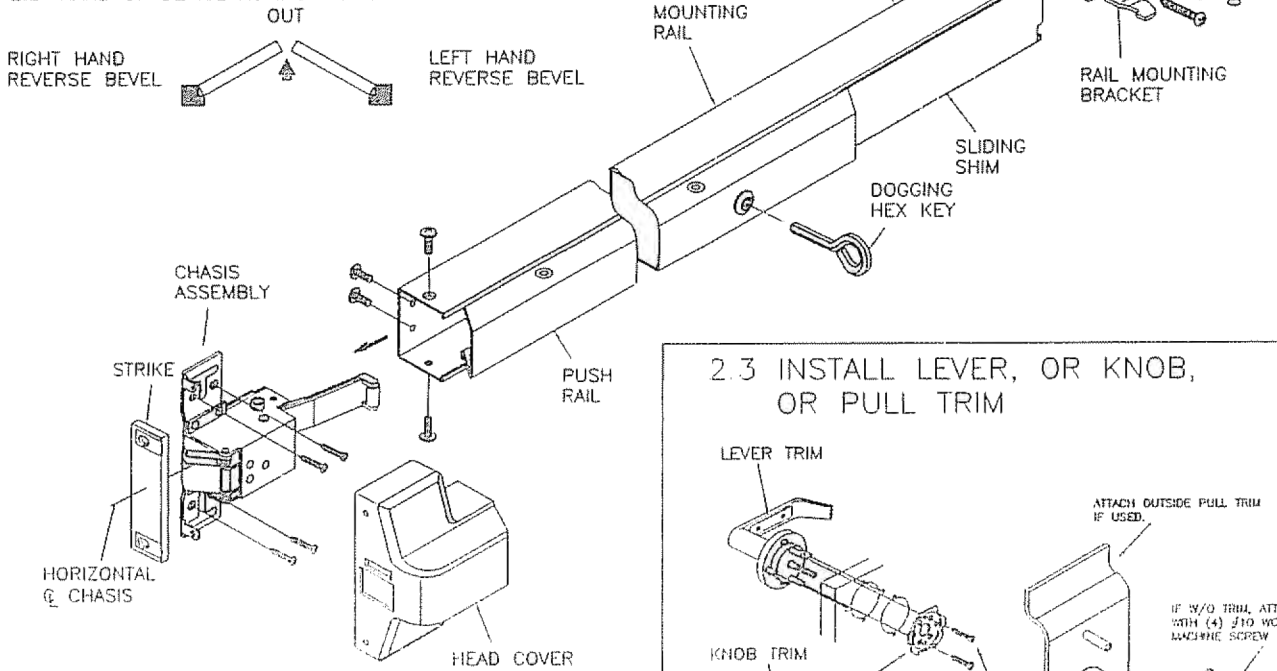


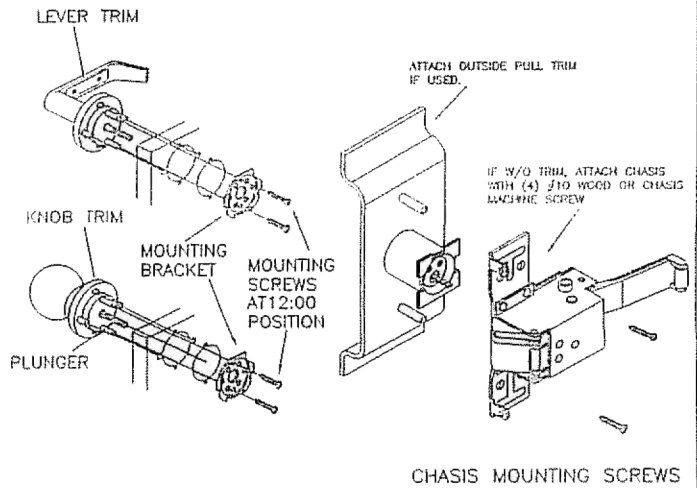
INSTALLATION INSTRUCTION FOR PB1100 SERIES PANIC EXIT DEVICE

BEFORE INSTALLING DEVICE, PLEASE CHECK :

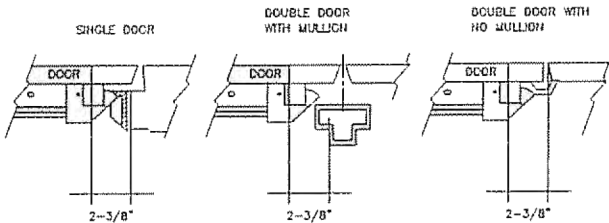
- 1 IF DOOR FITTED AND HUNG.
- 2 SIZE OF EXIT DEVICE. FUNCTION AND DESIGN..
 - 2.1 36" DOORS. CAN BE CUT TO FIT DOORS DOWN TO 30" WIDE
 - 2.2 48" DOORS. CAN BE CUT TO FIT DOORS DOWN TO 36" WIDE
 - 2.3 HAND OF DEVICE AGAINST APPLICATION



2.3 INSTALL LEVER, OR KNOB, OR PULL TRIM



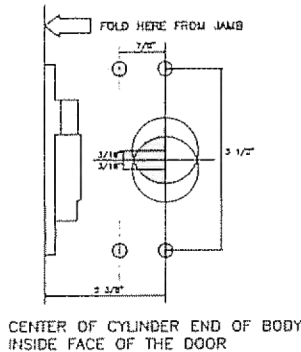
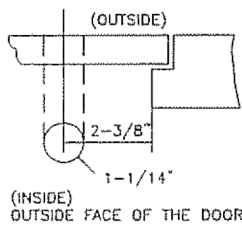
1 TYPE OF INSTALLATION



2 APPLY HARDWARE

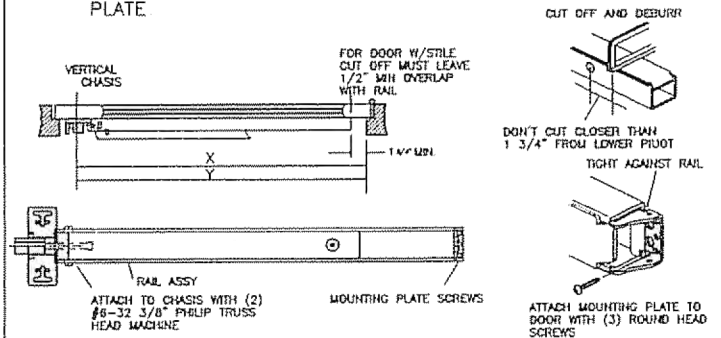
2.1 DRILL HOLES

MARK DOOR FACE AND DRILL HOLES IN ACCORDANCE WITH THE DIAMETERS SUGGESTED SEE ATTACHED TEMPLATE



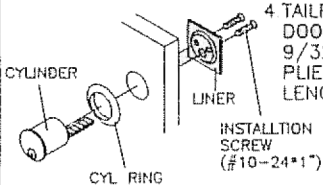
3 APPLY RAIL ASSEMBLY

- 1 CHECK THE SIZE OF DEVICE, IF CUTTING TO LENGTH IS REQUIRED.
- 2 DETERMINE CUT OFF LENGTH "X" BY SUBTRACTING 1 3/4" FROM "Y". MARK CUT OFF POINT ON MOUNTING RAIL
- 3 DEPRESS ARM INTO RAIL OPENING AND SLIDE RAIL ONTO CHASIS LEVEL RAIL AND FASTEN CHASIS AND MOUNTING PLATE

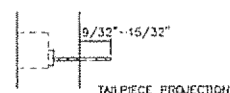


2.2 INSTALL CYLINDER

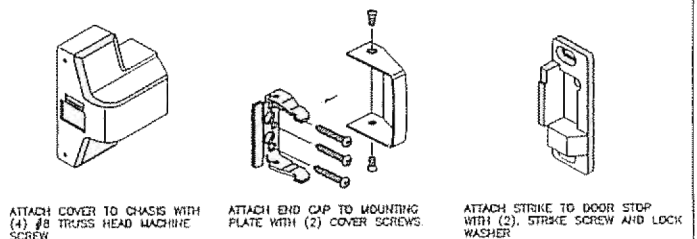
OUTSIDE FACE OF THE DOOR



- 1 INSERT THE CYLINDER THROUGH CYL RING THE HOLE ON THE DOOR.
- 2 KEEP THE TAIL PIECE HORIZONTAL.
- 3 MOUNT LINER ON INSIDE OF DOOR AND
- 4 TAILPIECE PROJECTION OVER INSIDE OF DOOR IS SUGGESTED IN THE RANGE 9/32"~15/32". IF NECESSARY, USEA PLIER TO BEND AND CUT TO DESIRED LENGTH



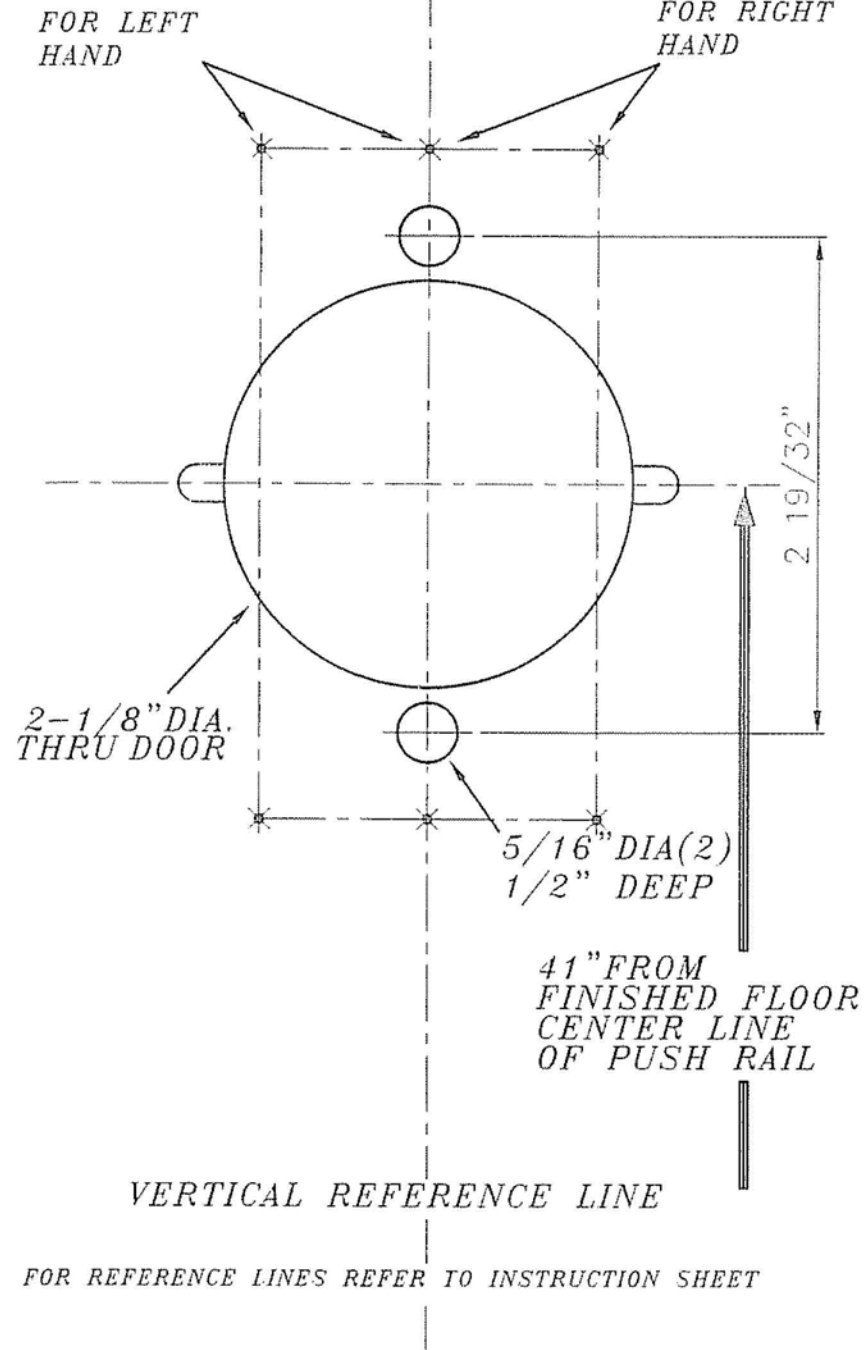
4. APPLY COVER AND STRIKES



TEMPLATE

FOR EDTBAR AND SVRTBAR SERIES EXIT DEVICE
USING LEVER HANDLE TRIM

FOR WOOD DOORS:
DRILL(4) $3/32$ " DIA. X $1-1/4$ "
DEEP PILOT HOLES
FOR METAL DOORS:
TAPPED(4) $\#3/16$ " HOLES.



TEMPLATE

FOR EDTBAR AND SVRTBAR SERIES EXIT DEVICE
USING LEVER HANDLE TRIM

